

Chess Notes

Needle Match With Oxfordshire

THE score in the Hampshire v. Oxfordshire match stands at seven games to seven with six for adjudication. Boards 6 and 14 look like wins for Hampshire and Boards 7, 12 and 19 could well be draws. A narrow win is therefore expected over the full 20 boards.

Five local players took part and obtained three points between them.

Full scores (Hampshire names first):—

Bd. 1: M. W. Thompson ½, J. Walker ½, Bd. 2: Cmdr. A. J. Peters (Hayling Island) 0, A. Hollis 1, Bd. 3: M. E. Ventham ½, M. Collins ½, Bd. 4: D. McCue ½, J. Footner ½, Bd. 5: P. A. Ursell 0, W. Turner 1, Bd. 6: L. C. Walters A, H. Booth A, Bd. 7: A. C. Barton A, N. Wilson A, Bd. 8: (default) 0, A. Footner 1, Bd. 9: A. F. Brameld (Gosport) 1, P. Ralph 0, Bd. 10: C. H. Henshaw 1, A. Baker 0, Bd. 11: Shepherd 1, M. Bruton 0, Bd. 12: B. D. Harding A, A. Leggett A, Bd. 13: T. De Buriatte (Fareham) 0, M. Bridgen 1, Bd. 14: L. E. Vine A, B. Dickinson A, Bd. 15: F. R. Carter 0, R. Watts 1, Bd. 16: S. L. Russell ½, Dr. N. Lawrence ½, Bd. 17: A. S. La Lond (Fareham) 1, Rev. H. Taylor 0, Bd. 18: J. B. Parker A, A. Coulson A, Bd. 19: D. G. Groves A, D. Del Neve A, Bd. 20: J. H. Jones (Gosport) 1, F. Wood 0.

Five of the seven rounds in the County Individual have now been completed, and M. Thompson (Southampton) and L. E. Vine (Eastleigh) at present share the lead with 4½ points each. Nearest rivals are C. H. Henshaw (Basingstoke) with 3½ points

and B. D. Harding, A. M. Edmonds and S. L. Russell, with with 3 points.

PORTSMOUTH LEAGUE

There has been a fair crop of results this week in the Portsmouth League.

In Division I of the Senior Section, Cosham dropped a precious half-point, while Portsmouth "B" are now certain of becoming Div. II champions. In the Schools Section it is nearly all St John's College, but Price's School is still well in the running for the championship.

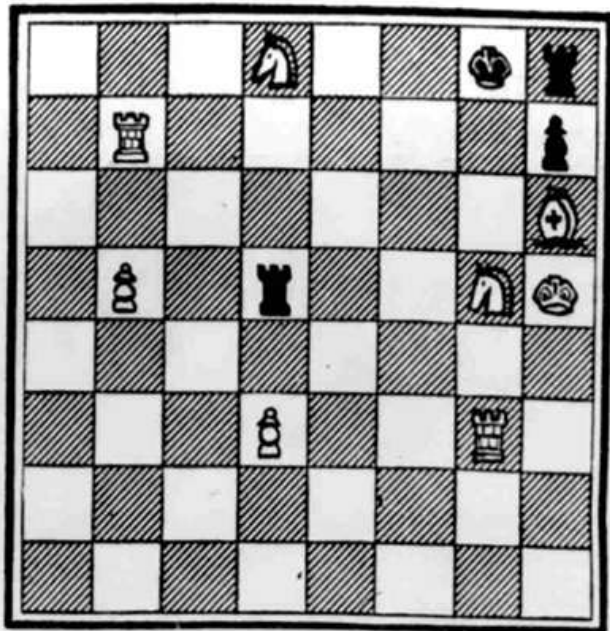
SENIOR SECTION

Division I.—Cosham "A" 2½, R.N.P.L. 2½, R. L. Paige 1, A. F. Brameld 0; G. Richardson 0, W. J. Eaton 1; S. C. Noke ½, P. J. Colson ½; T. E. Hollington 0, J. H. Jones 1; A. D. Crossin 1, E. Taylor 0.

Division II.—Portsmouth "B" 4, Gosport "A" 1, W. Makar 0, J. H. Jones 1; J. P. Price 1, J. Hardcastle 0; G. Feltham 1, A. N. Dossert 0; A. Bacon 1, R. Clark 0; C. J. Campion 1, G. Mellows 0.

St John's "A" 3, Cosham "B" 2, R. Pemberton-James 1, H. C. Smith 0; D. Peniston-Bird 0, M. Leggett 1; C. Thomas 0, S. Lamb 1; K. Harrison 1, R. P. L. Brett 0; A. Lakin 1, J. Hodakinson 0.

Division III.—De Havillands "B"



White to move and mate in two.

3½, Cyanamid "B" 1½, K. Lawrence 1, default 0; S. Harris 1, R. Rudgley 0; J. Simmons ½, A. Yarrow ½; G. Mathews 0, B. Hooper 1; D. Walker 1, default 0.

SCHOOLS SECTION

Division I (Section A).—Gosport Grammar "A" 2, St John's "C" 3, R. Jones 0, D. Peniston-Bird 1; W. Rance 0, C. Thomas 1; C. Pringle 0, K. Harrison 1; R. Webb 1, F. Arlbarg 0; G. Williams 1, R. Shaw-Brown 0.

Division I (Section B).—Gosport Grammar "B" 1, St John's "D" 4, A. Cocks 0, A. Clark 1; R. Crowe 1, C. Moore 0; A. Dellbridge 0, P. Miller 1; R. Stubbington 0, C. Dawes 1; D. Lowe 0, B. Davis 1.

Division II.—Gosport Grammar "C" 0, St John's "E" 5, R. Moore 0, A. Lakin 1; C. Jones 0, M. Rice 1; L. Stubbington 0, C. Leake 1; J. Harrington 0, B. O'Brien 1; S. Goldgewicht 0, K. Taylor 1.

TABLES

SENIOR SECTION					
Division I					
	P	W	D	G	P
Portsmouth "A"	7	6	0	24½	6
Cosham "A"	8	5	1	24½	5½
Fareham "A"	7	4	1	20	4½
R.N.P.L.	8	2	3	21	3½
Comm. Ctr.	7	1	1	11½	1½
Portis. Gramm "A"	7	1	0	8½	1

Division II					
	P	W	D	G	P
Portsmouth "B"	9	9	0	34	9
Gosport "A"	8	5	0	25	5
Fareham "B"	7	4	0	20½	4
St John's "A"	8	3	0	19	3
Cosham "B"	8	2	0	13	2
De Havillands "A"	8	1	0	8½	1

Division III					
	P	W	D	G	P
Fareham "C"	6	4	2	20	5
St John's "B"	6	5	0	19½	5
Portsmouth "C"	7	2	3	17	3½
De Havillands "B"	7	3	1	17	3½
Gosport "B"	7	2	2	17	3
Cyanamid	7	0	0	9½	0

SCHOOLS SECTION

Division I (Section A)					
	P	W	D	G	P
St John's "C"	6	4	2	20	5
Prices "A"	5	3	2	16	4
Gosp. Gramm. "A"	2	1	0	5	1
Portis. Gramm. "B"	4	1	0	10	1
Purbrook "A"	5	0	0	4	0

Division I (Section B)

	P	W	D	G	P
St John's "D"	6	6	0	26	6
Tech. High "A"	6	3	1	16½	3½
Portchester Mod.	6	3	1	14½	3½
Gosp. Gramm. "B"	3	1	0	6	1
Purbrook "B"	7	0	0	7	0

Division II

	P	W	D	G	P
St John's "E"	6	6	0	27½	6
St John's "F"	4	4	0	20	4
Tech. High "B"	4	2	0	8	2
Portis. Gramm. "C"	2	1	0	4½	1
Purbrook "C"	4	1	0	6	1
Fareham Sec.	3	1	0	3	1
Prices "B"	4	0	0	4	0
Gosp. Gramm. "C"	3	0	0	2	0

At the end of the sixth round in the Portsmouth and District Individual Championship, Dr. B. G. Wells (Portsmouth) has moved into the lead with five points.

In second place are Dr. A. J. Pointon (Portsmouth), T. E. Hollington (Cosham), P. M. Collins (Portsmouth Grammar), J. H. Jones (Gosport) and G. Richardson (Cosham), all with 4½ points.

With two more rounds to go, it looks like being a very close finish this year.

FRIENDLY MATCH

A friendly match on 10 boards was played between De Havilland and A.S.W.E. (Portsdown), which the Admiralty Establishment won by 6½ games to 3½. It is interesting to know that chess is still alive at A.S.W.E. and it is hoped that they will be returning to League play next season.

Scores (De Havilland names first):—
Bd. 1: Langley 0, Underhill 1, Bd. 2: Smith (B.) 1, Evans 0, Bd. 3: Harris 0, Ross 1, Bd. 4: Shepherd 0, Levy 1, Bd. 5: Ralls 0, Ratter 1, Bd. 6: Feasey 0, Davis 1, Bd. 7: Walker 1, Bayliss 0, Bd. 8: Compton 1, Smith (S.) 0, Bd. 9: Lawrence 0, Carver 1, Bd. 10: Woods ½, Knight ½.

POSTAL CHESS

Further results in the County and District Correspondence Chess Championship, 1961, are as follows:

Hants I

Bd. 1: R. C. Mitchell lost to T. H. George (Essex).
Bd. 6: D. A. Rawden lost to Dr. B. G. Dudley (Worce).
Bd. 26: S. C. Noke (Cosham) beat A. F. Stammwitz (Middlesex).
Bd. 27: T. E. Hollington (Cosham) drew with W. Hearn (Suffolk).
Total score to date: Two points from six games completed.

Hants II

Bd. 15: H. C. Smith (Cosham) lost to T. C. Hughes (Glam).
Bd. 23: M. A. Jupe beat W. H. Thomas (Mon).
Bd. 26: W. Rose lost to D. Machin (Northants).
Total score to date: One point from four games completed.

PROBLEM

The solution to last week's five-mover was 1... R x P+; 2. P x R, Q x P+; 3. K-Q2, Q-Q6+; 4. K-B1, R-B1+; 5. Q-B7, Q x Q mate (if 2... K-Q2, Q x Q+; 3. K-K3, R-B6+; 4. R-Q3, R x R mate).

This week we have another five-mover composed by W. E. Caine, of Southsea.

LATE RESULTS

Schools Section of Portsmouth League: Portsmouth Grammar "B" 3, Purbrook "A" 2; St John's "D" 1½; Technical High "A" 3½; Gosport Grammar "B" 2, Portchester 3; Portsmouth Grammar "C" 4, Purbrook "C" 1.