

# Portsmouth



## Out For The Double

**P**ORTSMOUTH are now top of the Hampshire League Table following their win against Southampton. Their position is even stronger than at first sight, as Fareham have lost their recent match against Woolston.

Portsmouth Chess Club now have the "double" within their reach — Champions of both Hampshire and of Portsmouth and District — and no doubt they will spare no effort to make this remarkable achievement a fact.

### SCORES

Portsmouth 3½, Southampton 1½.  
(Dr. A. J. Pointon 1, J. Valier 0;  
Dr. B. G. Wells 1, H. L. Parsons 0;  
Lieut. D. K. Butler 0, G. L. Pritchard 1;  
W. Makar ½, A. C. Barton ½;  
D. M. Heywood 1, Default 0)

### TABLE

	P	W	D	G	P
Portsmouth	5	4	0	15½	4
Fareham	5	4	0	15½	4
Bournemouth	5	3	0	11½	3
Young Pompeians	4	2	1	12	2½
Southampton	6	2	1	13½	2½
Salisbury	5	2	0	12½	2
Cosham	5	2	0	11	1
Woolston	4	1	0	8½	2
Andover	5	1	0	7	1

### PORTSMOUTH LEAGUE

There has been very little activity in the Portsmouth and District League during the past week, and the only mentionable feature was De Havilland's rather encouraging win in Division 3 of the Senior Section.

**Senior Section — Division 2.** — Gosport "A" 4½, Cosham "B" ½. (J. H. Jones ½, R. L. Paige ½; A. N. Dosssett 1, H. C. Smith 0; J. Hardcastle 1, M. Leggett 0; H. J. Taylor 1, S. Lamb 0; R. Clark 1, J. Hodgkinson 0).

**Division 3.** — Gosport "B" 1, De Havilland "B" 4. (Cox 0, K. Lawrence 1; D. J. Byng 1, D. Walker 0; P. Bennett 0, S. Harris 1; A. Ferrier 0, J. Simmons 1; Bone 0, G. Matthews 1).

### Tables (Senior Section only).

	P	W	D	G	P
Portsmouth "A"	6	5	0	20½	5
Cosham "A"	6	4	0	18	4
Fareham "A"	6	3	1	17	3½
R.N.P.L.	6	2	2	16½	3
Comm. Centre	6	1	1	10½	1½
P'mouth Gramm "A"	6	1	0	7½	1

### Division 2

	P	W	D	G	P
Portsmouth "B"	7	7	0	26	7
Gosport "A"	7	5	0	24	5
Fareham "B"	7	4	0	20½	4
Cosham "B"	6	2	0	10	2
St John's "A"	6	1	0	11½	1
De Havilland "A"	7	1	0	5	1

### Division 3

	P	W	D	G	P
Fareham "C"	5	4	1	17½	4½
St John's "B"	5	4	0	16	4
Gosport "B"	6	2	2	15½	3
Portsmouth "C"	6	2	2	14½	3
De Havilland "B"	6	2	1	13½	2½
Cyanamid "B"	6	0	0	3	0

In the Individual Tournament, pairings for the sixth round (with scores to date in brackets) are:—

Collins (4½) v. Wells (4), Jones (4) v. Hollington (4), West (3) v. Richardson (3½), Pointon (3½) v. Comben (3), Evans (2½) v. Watson (3), Smith (J.) (3) v. Adams (2½), Farmer (2½) v. March (2½), Price (2½) v. Brameld (2½), Le Lond (1) v. Crossin (1½), Davis (0) v. Moir (1), Lee (1) v. Smith (H.) (1½), Grant (2) v.

Paige (2½), Heywood (2) v. Bloxson (2).

### POSTAL CHESS

The British Correspondence Chess Association yearbook just issued lists the results of 1960 competitions, and the following local names appear:—

**Dr. B. G. Wells (Portsmouth).** — (a) Equal second place in Trophies Tourney Division 1 (Section A). (b) 19th place in Handicap Tourney (Class 2).

**L. West (Community Centre).** — (a) Third place in Trophies Tourney Division 1 (Section A). (b) 49th place in Handicap Tourney (Class 2).

**J. E. C. Grant (Fareham).** — 33rd place in Handicap Tourney (Class 4).  
**R. L. Paige (Cosham).** — (a) Equal 3rd place in Trophies Tourney Division 4 (Section B). (b) 22nd place in Handicap Tourney (Class 4).

**A. F. Garner (Fareham).** — (a) 9th place in Trophies Tourney Division 1 (Section B). (b) 48th place in Handicap Tourney (Class 3).

**Cmdr. A. J. Peters.** — (a) Equal 2nd place in Trophies Tourney Major (Section C). (b) 36th place in Handicap Tourney (Class 1).

Results are beginning to come in for the 1961 County and District Correspondence Championship. Hampshire players who have finished their games are:—

**Hants I.** — Bd. 1 P. A. Ursell (Bournemouth) 0, v. C. H. O'D Alexander (Glos.) 1. Bd. 9 A. S. La Lond (Fareham) ½, v. M. W. Wills (Cams.) ½.

**Hants II.** — Bd. 4 A. R. Cooper (Southsea) 0, v. D. H. Butler (Berks.) 1.

### NEW WORKS CLUB

The Chess Section of the Vosper Sports and Social Club has been reformed and it seems very probable that they will be entering at least one team in the Portsmouth and District League next season. At the moment, a Tournament between 11 players is starting with the object of assessing the potential playing strength of a number of newcomers.

### NATIONAL CHESS WEEK

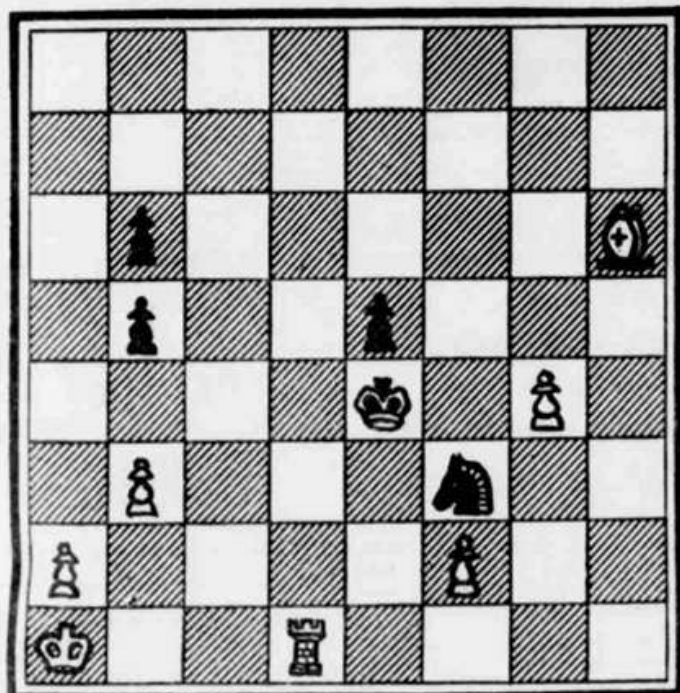
The week set aside by the British Chess Federation for National Chess Week this year is March 12—18.

The idea is for all Chess organizations to stage some special event during that week, which is likely to bring the game to the notice of the general public. All local clubs are being asked to co-operate and one way that they can do this is to organize a 'Teenagers v. Old Stagers' match so that the result can be incorporated into the mammoth country-wide match that has now become a tradition.

### PROBLEM

A few weeks ago, we published the famous "Bristol" three-mover.

This week we give the equally well known "Indian." First published around 1845, it is generally thought to be the composition of an English Chaplain living in India — hence the name.



White to move and mate in four.