



# Record Entry For Schools' Tourney

**T**HE National Schools Chess Tournament has this year attracted a record entry of 18 teams from 15 schools in Hampshire, Isle of Wight and Sussex.

As previously, the competition will be on a knock-out basis, and there will be a handicapping system based on the ages of the players concerned.

All our local teams receive a bye in Round 1, but Round 2 contains the following pairings:

Bembridge School, I.W. (1st team) v. St John's, Southsea (1st team).

Ichen Grammar, Southampton v. Portsmouth Grammar School.

East Grinstead Grammar v. Price's School, Fareham.

St John's, Southsea (2nd team) v. Taunton's School, Southampton.

Round 2 has to be completed by November 18.

## PORTSMOUTH LEAGUE

There has been a very welcome late entry into the Senior Section of the Portsmouth and District League, which has made the number of teams in Division III up to five and given a much better balanced distribution.

This team has come from Portsmouth College of Technology and is led by J. H. Gardener.

Meanwhile, the first two results of the season have come in. Fareham "A" (with their strongest available team in play) lost heavily to Cosham "A", which most surely indicate that the Cosham Club have their eye on the Championship this year.

Portsmouth Chess Club, with their strength divided between two teams in the First Division, did well to have their "B" team beat Community Centre (strengthened by the allegiance of A. S. La Lond) by a decisive margin.

## DETAILED SCORES

### SENIOR SECTION (DIVISION D)

Cosham "A" 3½, Fareham "A" 1½ (C. F. Way 0, W. H. Pratten 1; R. L. Paige 1, T. J. De Burcaite 0; G. Richardson ½, N. C. Taylor ½; S. C. Noke, I. F. Johnson 0; A. D. Crossan 1, R. J. Tyack 0).

Portsmouth "B" 3½, Community Centre 1½ (M. J. Dymond ½, B. S. Carter ½; P. M. Collins 1, A. Hayes 0; M. March 0, A. S. La Lond 1; C. J. Campion 1, L. West 0; H. C. Bailey 1, R. I. Ross 0).

### National Club Championship

Always eager to pioneer new fields, the Young Pompeians (reigning Hampshire League Champions) have entered a team in the National Club Championship.

This competition is of course, very much stronger than anything found locally and the Y.P.'s do not expect to get very far before being knocked out. Their main object is to gain experience.

However, one never knows, and all local players will wish them luck in their latest venture.

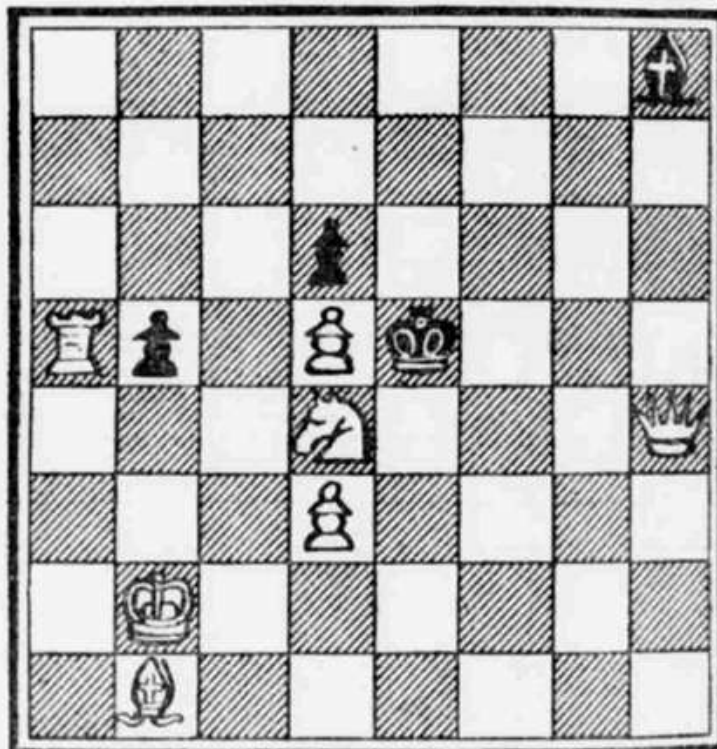
Teams (of six) will be drawn from the following players: M. J. Dymond, R. L. Paige, P. M. Collins, A. F. Brameld, M. M. March, C. J. Campion, J. F. Watton and J. H. Jones.

## DIAGRAM

This week we publish an original problem by Mr. C. F. Way, of Cosham Chess Club (who, incidentally, has recently presented to his club a handsome trophy for the club championship).

By C. F. Way (Cosham).

BLACK



WHITE