

Chess Notes

ENTHUSIASM FOR GAME GROWING

COSHAM could manage only a draw in their final Hampshire League match against Salisbury, and with Bournemouth likely to beat Andover when the two outstanding games are adjudicated, it would now seem unlikely that our four local teams will secure the first four places as was hoped.

Nevertheless, it is a wonderful example of the growing enthusiasm for the game in Portsmouth and District that we came so near to "sweeping the board" this season.

Subject to a final result in the Bournemouth v. Andover match, the programme in this competition has now been completed and everyone seems to agree that it has been a most interesting season's play.

Result — Cosham 2½, Salisbury 2½, G. Richardson 0, W. R. Bale 1; R. L. Paige 1, W. W. Watson 0; A. D. Crossin 1, J. D. Herring 0; T. E. Hollington 0, A. J. Bentley 1; R. P. L. Pett ½, R. Trezear ½.

	P	W	D	G	P
Young Pompeians	8	6	1	29	6½
Fareham	8	6	0	23	6
Portsmouth	8	5	0	25½	5
Cosham	8	4	1	21½	4½
Bournemouth	7	4	0	16	4
Southampton	8	2	1	18	3½
Salisbury	8	2	1	17½	2½
Wootton	7	0	0	16½	2
Andover	7	1	0	8	1

PORTSMOUTH LEAGUE

Both Portsmouth Grammar School "A" and De Havillands "A" won their final matches in the Senior Section, but in neither case was the win sufficient to lift them off bottom place in their respective tables.

There are no further results to hand in the Schools' Section, and it is to be hoped that the school organizers will not delay the completion of their programmes too long.

SENIOR SECTION

Division I. — Community Centre 2, Portsmouth Grammar "A" 3, (B. S. Carter ½, P. M. Collins ½, A. Hayes 1, De-fault 0, De-fault 0, D. Watkins 1; S. F. Adams ½, C. Goble ½; M. James 0, I. Mansell 1).

Division II. — Cosham "B" 1, De Havillands "A" 4 (M. Leggett 0, L. Langley 1; R. P. L. Pett 0, R. Ralls 1; S. A. Lamb 0, W. Prior 1; J. Hadkinson 1, S. Shepherd 0; T. McClelland 0, M. Woods 1).

DIVISION I

	P	W	D	G	P
Portsmouth "A"	10	7	0	27½	7
Cosham "A"	10	6	2	21	7
Fareham "A"	10	6	2	20	7
R.N.P.L.	10	3	3	26	4½
Comm Centre	10	2	1	17½	2½
Portsmouth Gramm. 'A'	10	2	0	13	2

DIVISION II

	P	W	D	G	P
Portsmouth "B"	10	4	0	24½	4
Gosport "A"	10	6	0	20	6
Fareham "B"	10	6	0	29½	6
St John's "A"	10	5	0	25½	5
Cosham "B"	10	2	0	15½	2
De Havilland "A"	10	2	0	14	2

DIVISION III

	P	W	D	G	P
Fareham "C"	10	8	2	35	9
St John's "B"	10	7	0	22	7
Portsmouth "C"	10	4	3	26	5½
De Havilland "B"	10	4	1	22½	4½
Gosport "B"	9	2	2	19	2
Cyanamid "B"	9	0	0	10½	0

In the Individual Tournament, last round results received to date are:— Jones 0, Paige 1; Price 0, Evans 1; Smith (J.) 0, Heywood 1.

COUNTY POSTAL CHESS

According to the bulletin circulated by the General Conductor of the County and District Correspondence Chess Championship Tournament, on May 1, Hampshire's two teams were running equal 9th/11th (out of 16 teams) in Division I and equal 18th/20th (out of 27 teams) in Division II.

Gloucester are at present leading in Division I with Middlesex struggling at the bottom of the table. In Division II, Northants are in the lead. Further Hampshire results that have been sent in are:—

Hants I. — Cmdr. A. J. Peters lost to W. C. Evans (Yorks 1); E. W. Chandler drew with A. F. Behmer (Middlesex); S. H. C. Lucas lost to C. H. Watson (Sussex). (Total to date — six points from 13 games completed).

Hants II. — P. M. Hodgson drew with R. Combes (Linca); R. Tyack lost to Dr. E. L. Lombay (Kent); R. L. Paige won against J. F. O'Connor

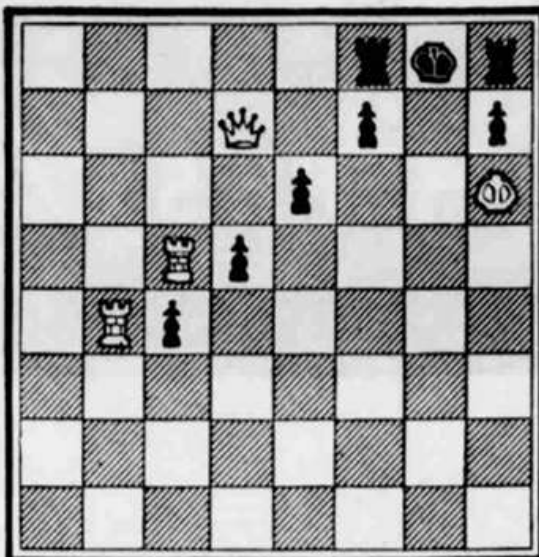
(Warwicks); E. J. Canty won against G. F. Hale (Wills); R. Ralls lost to R. L. Brooks (Cumb. and Westmorland). (Total to date — 6½ points from 16 games completed).

PROBLEM

This week we have the last of the problems submitted by Mr. W. E. Caine of Southsea. Key move next week.

Problem by W. E. CAINE

BLACK (8 pieces)



WHITE (4 pieces)

White to move and mate in two.