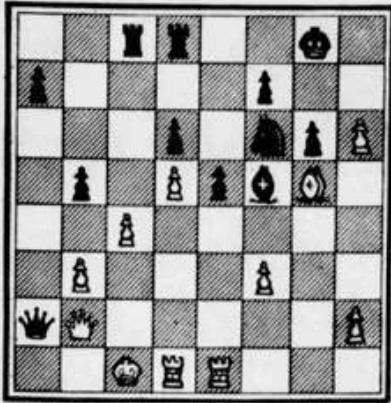


Chess Notes

BLACK (12 PIECES)



WHITE (11 PIECES).

Black to play and mate in five moves.

SCHOOLS TEAM LOSE TO SOUTHAMPTON

THE representative team, drawn from our local schools, lost heavily by 10½ games to 19½ to Southampton in the Junior Inter-League match played at Taunton's School, Southampton. The Portsmouth team was at almost full strength, so this year they have to admit to being beaten by a better team.

Full scores were (Portsmouth League games first)—Ed. 1 P. M. Collier (P.G.S.), 5; M. Foot, 1; W. A. F. Brazier (G.G.S.), 1; R. Rowland, 0; Ed. 2 Default (G.G.S.), 1; Ed. 4 M. Marsh (G.G.S.), 5; D. Saunders 1; Ed. 5 P. Penberton-James (S.J.), 8; G. Allan Moore 1; Ed. 6 H. Jones (G.G.S.), 5; C. Collins 1; Ed. 7 B. Tyack (P.S.), 1; M. Jupp 5; Ed. 8 B. A. Keen (P.S.), 5; D. Kahn 5; Ed. 9 C. Thomas (S.J.), 8; J. Patience 1; Ed. 10 K. Harrison (S.J.), 5; M. Baerle 1; Ed. 11 A. Clark (S.J.), 1; R. Cooke 0; Ed. 12 A. Leadbetter (P.P.), 8; H. Brown 1; Ed. 13 H. Hill (T.H.), 2; P. Hore 1; Ed. 14 P. Miller (S.J.), 6; D. Hewitt 1; Ed. 15 R. Warren (P.P.), 1; R. Baker 5; Ed. 16 R. Hodgkinson (G.G.S.), 1; Default 0; Ed. 17 R. J. Woods (G.G.S.), 8; C. Magley 1; Ed. 18 G. Gander (T.H.), 8; F. Jenkins 1; Ed. 19 C. Dawes (S.J.), 1; J. Collins 0; Ed. 20 B. Davis (S.J.), 8; J. Dunford 1; Ed. 21 L. Lakin (S.J.), 1; R. Morgan 0; Ed. 22 D. Thomas (P.P.), 8; A. Clark 1; Ed. 23 C. Arnold (T.H.), 8; B. Williams 1; Ed. 24 K. Fain (P.P.), 8; T. Pickford 1; Ed. 25 M. Pelling (T.H.), 8; M. Pilling 1; Ed. 26 Heather Norwood (P.P.), 6; R. Bingham 1; Ed. 27 C. Leake (S.J.), 1; Diana Fry (S.J.), 8; C. Gable (P.G.S.), 8; Carol Cooper 1; Ed. 28 D. Nicholson (P.P.), 5; Celia Ford 5; Ed. 29 R. Bower (T.H.), 8; L. Lett (Code S.J.—St John's College; P.P.—Purbeck Park; T.H.—Technical High; P.S.—Price's School; G.G.S.—Gosport Grammar; N.G.S.—Northern Grammar; G.G.S. Gosport Grammar).

Portsmouth League
In the Third Division of the Senior Section of the Portsmouth League, the "Johns" "B" have narrowed the margin between themselves and the leaders, Fareham "C".

Portsmouth "C" have also improved their position, following their drawn match with the Fareham team.

In the premier section of the Schools Tournament, Prices "A" are making a strong bid for the championship, while Perchester Modern are challenging Technical High for second place in the "B" Section of the First Division.

RESULTS

Senior Section
Division 3
Portsmouth "C" 2½, Fareham "C" 2½ (C. J. Campion 5, R. J. Tyack 5); J. E. Smith 5, B. A. Keen 5; E. J. Cury 8, D. A. Brown 1; B. J. Price 1, G. Houghton 0; R. J. Woods 5, C. Pines 5).
St John's "B" 2½, Gosport "B" 1½ (A. Clark 1, D. Hogg 0, C. Moore 0; Fayers 8, P. Miller 8; F. Bennett 1; C. Dawes 1, A. F. Ferrer 0; B. Davis 5, Mrs. L. Clear 5).

Schools Section
Division I (Section A)
Prices "A" 2½, St John's "C" 2½ (H. Curtis 1, P. Penberton-James 8; R. Tyack 8, D. Peniston-Bird 1; B. A. Keen 1, Default 0; C. Gay 8, A. Clark 1, A. Barkhousen 5, C. Dawes 5).
Portsmouth Grammar "B" 2, Prices "A" 2 (P. M. Collins 1, H. Curtis 8; D. Watkins 8, R. Tyack 1; M. Sandercombe 8, B. A. Keen 1; T. Moore 1, M. Eassey 0; I. Mansell 8, A. Barkhousen 1).

Division I (Section B)
Technical High "A" 2, Perchester Modern 2 (H. Hill 1, D. Cooke 8; E. Gander 8, W. Wallen 1; G. Arnold 8, C. Ward 1; M. Pelling 1, D. Magley 8; E. Tringham 8, N. Tindie 1).

Division II
Fareham Secondary 8, St John's "E" 1 (C. Pines 8, A. Lakin 1; G. Houghton 8, M. Rice 1; T. Bailey 8, C. Leake 1; B. Goodchild 8, B. O'Brien 1; R. Bailey 8, C. Malone 1).

TABLES

SENIOR SECTION				
DIVISION 3				
	P	W	D	P
Portsmouth "A"	7	4	0	24½
Cosham "A"	7	5	0	22
Fareham "A"	7	5	0	20
S.N.P.L.	7	2	2	18½
Quinn, Chr.	7	4	1	17½
Purk. Gram. "A"	7	4	0	15½

DIVISION II				
	P	W	D	P
Portsmouth "B"	8	9	0	30
Gosport "A"	7	5	0	24
Fareham "B"	7	4	0	20½
Cosham "B"	7	2	0	18
St John's "A"	7	2	0	18
De Havillands "A"	6	1	0	15½

DIVISION 1				
	P	W	D	P
Fareham "C"	8	4	2	20
St John's "B"	8	5	0	20½
Portsmouth "C"	8	3	1	17½
Gosport "B"	7	2	2	17
De Havillands "B"	6	2	1	15½
Clymound "B"	6	0	0	8

SCHOOLS SECTION				
Division I (Section A)				
	P	W	D	P
St John's "C"	5	2	2	14
Prices "A"	5	2	2	16
Gosport Grammar "A"	4	1	0	10
Purk. Grammar "B"	4	1	0	10
Purbeck "A"	3	0	0	8

Division I (Section B)				
	P	W	D	P
St John's "D"	5	3	0	22
Technical High "A"	8	2	1	16½
Perchester Modern	7	1	0	15
Gosport Grammar "B"	2	1	0	7
Purbeck "B"	2	0	0	7

Division 2				
	P	W	D	P
St John's "E"	4	4	0	20
St John's "F"	4	4	0	18
Technical High "B"	2	2	0	10
Purk. Grammar "C"	2	1	0	4½
Purk. Grammar "D"	4	1	0	10
Fareham Secondary	2	1	0	3
Prices "B"	4	0	0	8
Gosport Grammar "C"	2	0	0	2

Scores so far received in the 4th round of the Portsmouth and District Individual Championship are: West 4, Richardson 1; Evans 5, Watson 5; Price 1, Bramfield 8; Grant 8, Page 1; Howard 5, Blomson 5; Lee 8, South (H.) 1; Davis 8, Muir 1; Collins 8, Wells 1.

HAMPSHIRE LEAGUE

Cosham jump from 8th to 4th place in the Hampshire League Table following their win against Andover.

In this match, young Roger Page proved to play for the County was to beat the County Secretary.

He has been duly invited to take part in the next All-England match on Saturday.

Southampton are also improving their position, but it does not seem from what they can overtake the two leading teams.

RESULTS
Salisbury 1½, Southampton 2½ (P. Allen 1, J. Valler 8, W. R. Hall 8, D. A. Rawden 5; F. S. Scarce 8, G. L. Pritchard 1; P. K. Barber 8, P. L. Marshall 1; A. J. Hooley 8, A. C. Barton 1).

TABLE				
	P	W	D	P
Fareham	7	4	0	25
Portsmouth	7	4	0	24
Southampton	7	3	1	21
Cosham	6	2	1	17
Bournemouth	5	2	1	17
Young Pumpernickel	5	2	1	15
Woolston	5	2	1	12
Salisbury	4	2	1	14
Andover	4	1	0	8

PROBLEMS

The key move in last week's problem was Q-QN 8 (with threat Q-N4). Unfortunately, the White Bishop was misplaced on the diagram. It should have been on K4 not E5. The position published in this week was sent in by B. A. Keen of Price's School and Fareham Chess Club. He does not say whether it was composed or arose from actual play.

In any case, it is an interesting example of a forced mate in 3 moves.

LATE NEWS

De Havillands "B" 2½, Clymound (P.S.) Gosport Grammar "B" 1, St John's "B" 4, Gosport Grammar "C" 8, St John's "B" 8, Portsmouth "B" 8, Gosport "A" 1.