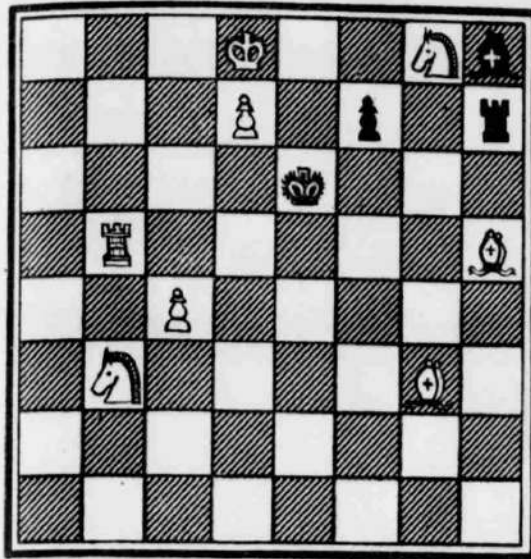


# Chess Notes



White to move and mate in two

## Now St John's Moves into Fourth Round

The St John's College "A" team has won its way into the fourth round of the National Schools' Tournament, after disposing of Grove School, St Leonards. The College's "B" team was, however, knocked out by Bournemouth School in a match which was very close, with St John's apparently having most of the bad luck that was going.

For instance, No. 5 accepted a draw in a superior position early on, No. 2 let a draw slip from his grasp in the closing stages, and No. 4 was a pawn up at the end, which was just not enough to persuade the adjudicator to give a win—and St John's "B" needed only half a point more to win the match.

**SCORES.**—St John's "A" 5½, Grove School, St Leonards, ½. (P. Pemberton-James 1, A. Buckle 0; D. Peniston-Bird ½, D. Stevenson ½; C. Thomas 1, R. Midgeley 0, K. Harrison 1, R. Harmer 0; F. Aribarg 1, B. Beynon 0; A. Clark 1, B. Beaney 0.) St John's "B" 2½, Bournemouth School 3½. (C. Moore 0, J. Tullock 1; P. Miller 0, M. Jervis 1; A. Lakin ½, N. McCall ½; M. Rice ½, R. Fraser ½; C. Leake ½, P. Dedwell ½; B. O'Brien 1, J. Ellis 0.)

**HAMPSHIRE LEAGUE.**—Fareham Chess Club continued its successful run in the Hampshire League with a 4-1 win against Andover. Bournemouth secured a narrow victory against Southampton.

**SCORES.**—Fareham 4, Andover 1. (T. de Buriatte 1, C. H. Henshaw 0; S. L. Russell ½, P. J. Cartmell ½; J. M. Jarvis ½, A. S. La Lond ½; Miss M. Elliott 0, G. W. S. Goggin 1; I. Miles 0, J. Grant 1.)

Southampton 2, Bournemouth 3. (J. Valler 0, D. K. Bevis 1; D. A. Rawden ½, E. W. Chandler ½; G. I. Pritchard 0, S. H. C. Lucas 1; A. C. Barton 1, H. Pollard 0; D. A. Horn ½, C. B. Orton ½.)

**PORTSMOUTH LEAGUE.**—Portsmouth "B" have increased their lead in the second division of the Portsmouth League, while St John's "B" are challenging Fareham "C" for leadership of Division III.

There have been no schools matches to report this week.

**RESULTS.—Senior Section, Division II:** Portsmouth "B" 3, Cosham "B" 2. (M. March ½, R. L. Paige ½; W. Makar 1, H. C. Smith 0; J. P. Price 0, T. Hollington 1; J. E. Smith 1, M. Leggett 0; A. Bacon ½, J. Hodgkinson ½.)

**Division III.**—St John's "B" 4, Cynamid "B" 1. (N. H. J. Wood 1, E. G. Potter 0, Default 0, R. Tyack 1; A. Hollingdale 1, G. D. Ratter 0. — Davis 0, T. H. Bayliss 1; — Hooper 0, A. F. Garner 1.) St John's "A" 2, De Havilland "A" 1. (P. Pemberton-James 1, H. Smith 0; D. Peniston-Bird 1, S. Shepherd 0; C. Thomas 0, L. Langley 1; K. Harrison 0, R. Moody 1; F. Aribarg 0, R. Ralls 1.)

**Division III.**—St John's "B" 4, Cynamid "B" 1.

A. Clark 1, C. Mills 0; C. Moore 1, — Smith 0, P. Miller 0, A. Yarrow 1; C. Dawes 1, default 0; B. Davis 1, — Brown 0.)

### TABLES

Senior Section					
Division I					
	P	W	D	G	P
Cosham "A"	3	3	0	11	3
Portsmouth "A"	2	7	0	10	2
R.N.P.L.	2	1	0	7½	1½
Fareham "A"	3	1	1	7	1½
Port. Grammar "A"	3	1	0	5	1
Comm. Ctr.	3	0	0	4½	0
Division II					
	P	W	D	G	P
Portsmouth "B"	3	3	0	11½	3
Gosport "A"	2	2	0	8	2
Fareham "B"	3	2	0	7½	2
St John's "A"	3	1	0	4	1
De Havilland "A"	2	0	0	4	1
Cynamid "A"	2	0	0	3	0
Cosham "B"	2	0	0	3	0
Division III					
	P	W	D	G	P
Fareham "C"	2	2	0	8	2
St John's "B"	3	2	0	8½	2
Gosport "B"	2	1	0	8	1
De Havilland "B"	2	1	0	4½	1
Portsmouth "C"	2	1	0	4	1
Cynamid "B"	3	0	0	3½	0

**NEW HEADQUARTERS.**—Cosham Chess Club is again on the move and has set up new headquarters at Manor Court Modern School, Central Road, Drayton. Club nights will continue to be on Thursdays, as hitherto, and new members will be very welcome.

**CHESS PROBLEM.**—The solution to Mr. Moir's "seven-mover" last week was: 1. B x RP (ch), K-R 1, 2. B-N6 (dis. ch), K-N 1, 3. R-R5 (ch), K x R 4, R-R 3 (ch), K-N 1; 5. R-R3 (ch), K x R; 6. Q-R4 (ch), K-N 1, 7. Q-R7 (mate).

This week we have a "two-mover" specially composed for the Evening News by Mr. W. E. Caine, of Southsea. Although not known in local competitive chess circles, Mr. Caine is obviously a composer of some experience and he writes to say how much he appreciates the new feature of a weekly diagram.

## UNIT TRUST PRICES

**Allied.**—Brit Ind Flex 1st 3/3½—5/7¼; 2nd 18/3½—19/6 sd; 3rd 20/3½—21/9½; 4th 20/3—21/9. Elect and Ind Dev 10/2½—11/7. Metals and Minerals 14/4½—15/3½.

**Save and Prosper Group.**—Cons B I T 10/3½—11/4 sd. Invest Trust 3/4½—5/10½. Trust Bank Units 8/—8/8½. Trust Bank Inv 2/6—3/11½. Trust Insurance 12/—12/10½. Scotbills 5/10½—6/4½. Scotshares 4/6½—4/11 sd. Crosby Capital 12/9½—13/6½. Crosby Income 4/9—5/7.

**Commercial.**—Commercial 23/7½—25/1½. Universal 2nd 44—46/4½. Domestic 3/11½—4/3¼ sd.

**Selective Group.**—Selective A 36/6—38/6. "B" 41/—43/7. "C" 21/9—22/9.

**Moorgate.**—Hundred 36/4½—38/4½. Investors General 21/1½—22/7½. Investors 2nd Gen 29/7½—31/3. Provident Invest 12/6—13/4½. Sec First 2nd Ser 12/6—13/4½.

**Municipal and General.**—M and G General 11/2½—11/10½. Second M and G 8/6½—9/1 sd. Mid Indust and Gen 9/2—9/8½.

**National.**—Century 38/6—40/7½. National Cons 27/4½—24/10½. National "D" 13/6—14/6 sd. Scotbills Trust 2nd 31/6—33/3. Bank Inv and Fin 10/3—11/7 sd.

**Commonwealth.**—A.E.G. 13/9—14/6. Orthodox 13/7½—14/4½. Commonwealth 10/0½—10/9½.

**First Provincial Group.**—Reserves 12/0½—12/9½. "B" 29/1—30/5½.

**Philip Hill Higginson.**—B.S.T. 9/6—10/0½. B.S.T. 12/10½—13/7½ sd.

**Dillon Walker.**—Falcon 4/4—4/7 sd. Unicorn 6/0½—6/5½. Can Int Growth 7/2—7½/6.

**Shield Fund Managers.**—Shield 12/8½—13/6½. Shields Conds 2/0½—2/0½.