

# Chess Notes

## HAMPSHIRE TRIFLE DISAPPOINTING

**I**N view of the fact that Hampshire had previously beaten Sussex, and Sussex had in turn beaten Kent, Hampshire's performance last week against Kent was a trifle disappointing.

The scores stand 8—11 in the S.C.C.U. first 20" match and 19½—25½ in the Amboyna Shield contest. Hampshire is, therefore, bound to lose both.

What must be a record number of local players took part (15) and they "broke even" with 5 wins, 4 draws, 5 losses and 1 for adjudication, as follows—

Bd. 10 Dr. A. J. Pointon (Portsmouth)	lost to C. Champion
Bd. 19 A. F. Brameld (Gosport)	beat W. Gillespy
Bd. 20 T. de Buriatte (Fareham)	drew with T. Llewellyn-Jones
Bd. 23 P. M. Collins (Ports. Gram.)	beat P. Hammer-ton
Bd. 25 W. Makar (Portsmouth)	drew with A. Johnson
Bd. 28 A. S. La Lond (Fareham)	drew with L. Lunberg
Bd. 29 Lt. D. K. Butler (Fareham)	lost to M. J. Reddie
Bd. 31 T. E. Hollington (Cocham)	lost to M. Lam-shire
Bd. 32 J. E. C. Grant (Fareham)	beat S. Paul
Bd. 33 J. P. Price (Portsmouth)	drew with A. A. Maris
Bd. 34 D. M. Heywood (Portsmouth)	beat F. Comber
Bd. 37 D. J. Blackman (Gosport)	lost to R. Raymond
Bd. 42 A. F. Garner (Fareham)	beat J. D. Davis
Bd. 43 J. H. Jones (Gosport)	game unfinished
Bd. 45 J. F. Watson (Ports. Gram.)	lost to D. Henderson

**Portsmouth League.**—Portsmouth 'A' have further improved their position in the First Division of the Senior Section in the Portsmouth League, and although the present champions, Fareham, are now climbing up the table, they have some way to go before they overhaul their rivals.

In the School's Section, St John's College have now established a very firm grip on all three divisions.

### RESULTS

**Senior Section—Division I**  
 Portsmouth "A" 4, Portsmouth Grammar "A" 1, (Dr. A. J. Pointon ½, P. M. Collins ½; Dr. R. G. Wells 1, D. Watkins 0; Lt. B. K. Butler 1, Default 0; D. M. Heywood ½, 1, Mansell ½; J. P. Price 1, C. Goble 0), R.N.P.L. 2, Fareham "A" 3, (W. J. Eaton 1, Default 0; A. F. Brameld 0, T. de Buriatte 1; P. J. Collins 0, A. S. La Lond 1; E. Taylor 1, G. W. S. Goggin 0; D. J. Blackman 0, F. Johnson 1).

**SCHOOLS SECTION**  
**Division I (Section A)**  
 St John's "C" 4, Purbrook "A" 1, (P. Pemberton-James 1, S. Rook 0; D. Peniston-Bird 0, A. Leadbetter 1; C. Thomas 1, R. Warren 0; K. Harrison 1, D. Thomas 0; F. Aribarr 1, A. Renouf 0).

**Division I (Section B)**  
 St John's "D" 5, Purbrook "B" 0, (A. Clark 1, N. Walker 0; C. Moore 1, G. Marsh 0; P. Miller 1, D. Nicholson 0; C. Dawes 1, J. Wilson 0; B. Shaw-Brown 1, Heather Norwood 0).

**Division II**  
 St John's "E" 5, Purbrook "C" 0, (B. Lakon 1, D. Nicholson 0; C. Leake 1, R. Francis 0; B. O'Brien 1, M. Grant 0; W. Galloway 1, R. Lintott 0; B. Taylor 1, Voss 0).

### TABLES SENIOR SECTION

**Division I**

Portsmouth "A"	P	W	D	G	P
Fareham "A"	7	4	1	20	4½
Cocham "A"	6	4	0	18	4
R.N.P.L.	6	2	2	18½	3
Comm. Ctr.	6	2	1	16	2½
Ports. Gram. "A"	7	1	0	8½	1½

**Division II**

Portsmouth "B"	P	W	D	G	P
Gosport "A"	7	7	0	26	7
Fareham "B"	7	5	0	24	5
Cocham "B"	7	4	0	20½	4
St John's "A"	6	1	0	11½	1½
De Havillands "A"	7	1	0	8	1

**Division III**

Fareham "C"	P	W	D	G	P
St John's "B"	5	4	1	17½	4½
Gosport "B"	6	2	2	15½	3
Portsmouth "C"	6	2	2	14½	3
De Havillands "B"	6	2	1	13½	2½
Cynamid "B"	6	0	0	8	0

### SCHOOLS SECTION

**Division I (Section A)**

St John's "C"	P	W	D	G	P
Prices "A"	4	2	1	14½	3½
Gos. Gram. "A"	3	2	1	10½	2½
Ports. Gram. "B"	3	1	0	8	1
Purbrook "A"	4	0	0	4	0

**Division I (Section B)**

St John's "D"	P	W	D	G	P
Tech. High "A"	5	3	1	14½	3½
Portchester Mod.	5	2	1	11½	2½
Gos. Gram. "B"	2	1	0	5	1
Purbrook "B"	3	0	0	7	0

**Division II**

St John's "E"	P	W	D	G	P
St John's "B"	3	3	0	15	3
Tech. High "B"	3	0	0	12½	3
Ports. Gram. "C"	2	0	0	7	0
Purbrook "C"	4	1	0	6½	1½
Fareham Sec.	2	1	0	5	1
Prices "B"	3	0	0	4	0
Gosport Gram. "C"	2	0	0	2	0

### HAMPSHIRE LEAGUE

The Conductor of the Hampshire League has decided to make the recent match between Fareham and Woolston a 4-board affair, as he objected to the top board game being played separately by mutual arrangement.

The scores were as follows:—  
 Fareham ½, Woolston 3½ (P. J. Cartmill 0, A. M. Edmonds 1; T. de Buriatte 0, G. Dawl; A. S. La Lond 0, C. Newby 1; R. Tyack ½, M. D. Thompson ½).

### TABLE

Portsmouth	P	W	D	G	P
Fareham	5	4	0	18½	4
Bournemouth	5	3	0	11½	3
Young Pompeians	4	2	1	12	2½
Southampton	6	2	1	13½	2½
Salisbury	5	0	0	12½	2
Woolston	5	0	0	12	2
Cocham	5	0	0	11	2
Andover	5	1	0	7	1

### PROBLEM

The solution to last week's "Indian" problem was I. B-N5, P-N5, 2. B-Q1, P-N4; 3. R-Q2, K-B5; 4. R-Q4 (ch), check and mate.

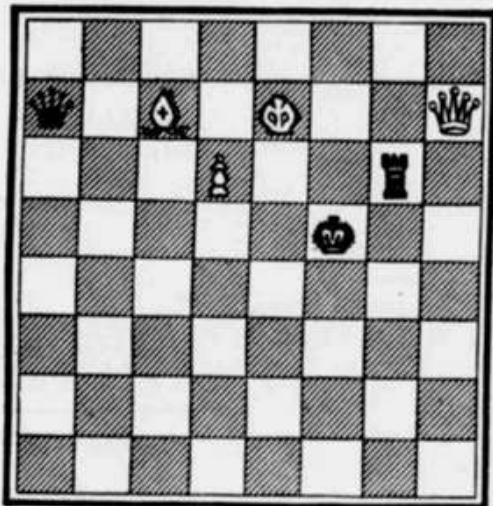
There are several others solutions. This week we have a position sent in by Mr. C. Hotwell of North End, Portsmouth, which arose in a game he was playing with his 15-year-old son.

The question is, can Black (who has the move) save the game? On the face of it, White has a win, but there does seem to be a number of resources left to Black in defence.

### LATE NEWS

**Portsmouth League results.**—Division I: Commonly Centre 1, Cocham "A" 4. Division II: De Havillands "A" ½, St John's "A" 4½.

Black (three pieces).



White (four pieces).