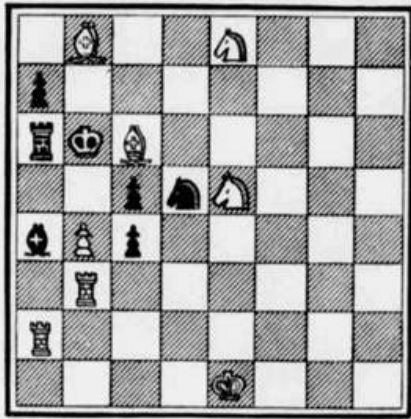


Chess Notes

BLACK (SEVEN PIECES).



WHITE (EIGHT PIECES).
White to move, and mate in two.

— MUCH ACTIVITY — LITTLE CHANGE

THERE has been a fair measure of activity in the local League during the week, without any sensational changes in the relative positions of the teams.

St John's College continue to do well in the Schools' Section (their "F" team secured the third successive 5-0 win) and may well sweep the board this season.

In the Senior Section, R.N.P.L. move up into third position in Division 1, whilst Portsmouth Grammar School "A" drop to bottom place.

RESULTS

SENIOR SECTION

DIVISION 1
Portsmouth Grammar School "A" 5-0
Community Centre 2 3-1 (P. M. Collins 3, B. S. Carter 1, J. F. Watson 2, A. Hayes 1, A. Tulson 2, S. F. Adams 1, D. Watkins 1, Default 0, I. Mansell 2, R. James 1).
Portsmouth Grammar School "A" 5-0
R.N.P.L. 4-1 (J. F. Watson 2, A. J. Frammed 1, P. M. Collins 3, W. J. Eason 1, A. Russell 2, P. J. Colson 1, P. Mihalov 2, E. Taylor 1, I. Mansell 2, H. W. Tripp 1).
DIVISION 2
Fareham "C" 3-2, De Havillands "B" 2-1 (B. A. Keen 1, K. Lawrence 2, D. A. Blossom 1, S. Harris 2, R. J. Tyack 1, J. Simmons 2, F. Gay 2, D. Walker 1, Mrs. Gay 2, G. Matthews 1).

SCHOOLS SECTION

DIVISION 1 (SECTION B)
St John's "D" 5-0, Portchester Modern 2 (A. Clark 1, C. Ward 2, C. Moore 1, A. Jones 2, W. Miller 2, D. Coates 1, C. Dawes 1, W. Waller 2, B. Davis 2, N. Tuning 1).
Portchester Modern 1, St John's "D" 4 (A. Jones 2, A. Clark 1, D. Coates 2, C. Moore 1, W. Waller 2, P. Miller 1, N. Tuning 1, C. Dawes 2, D. Magridge 2, B. Davis 1).
DIVISION 2
St John's "F" 5, Fareham Sec. 2 (C. Bichon 1, C. Pines 2, J. Hawkins 1, R. Stanley 2, L. Gallaway 1, J. Bailey 2, R. Slayter 1, B. Goodchild 2, S. Keeley 1, G. Houghton 2).
St John's "E" 2, Prices "B" 2 (A. Lakin 1, M. Earey 2, M. Rice 1, I. Crawford 2, C. Leake 1, N. Davis 2, J. Hawkins 1, C. Jones 2, C. Malone 1, P. Przybycin 2).

TABLES

SENIOR SECTION

Division 1					
	P	W	D	G	P
Cosham "A"	5	4	0	17	4
Portsmouth "A"	5	4	0	16 1/2	4
R.N.P.L.	5	2	2	16 1/2	2
Fareham "A"	5	2	1	12	2 1/2
Comm. Ctr.	5	1	1	10 1/2	1 1/2
Port. Gram.	5	1	0	7 1/2	1
Division 2					
	P	W	D	G	P
Portsmouth "B"	4	4	2	15	4
Fareham "B"	5	4	0	17	4
Gosport "A"	4	3	0	13	2
Cosham "B"	4	2	0	11 1/2	2
De Havillands "A"	1	1	0	5 1/2	1
St John's "A"	5	0	0	8 1/2	0
Division 3					
	P	W	D	G	P
Fareham "C"	5	4	1	17 1/2	4 1/2
St John's "B"	5	2	1	12	3 1/2
Gosport "B"	5	2	2	14 1/2	3
Portsmouth "C"	4	1	2	9	2
De Havillands "B"	5	1	2	9 1/2	1 1/2
Cyanamid "B"	5	0	0	6 1/2	0
SCHOOLS SECTION					
Division 1 (Section A)					
	P	W	D	G	P
Prices "A"	5	2	0	8	2
St John's "C"	5	1	0	4	1
Gosp. Gram. "A"	5	1	0	4	1
Port. Gram. "B"	5	1	0	4	1
Parbrook "A"	5	0	0	3	0
Division 1 (Section B)					
	P	W	D	G	P
St John's "D"	4	4	0	17	4
Tech. High "A"	5	3	1	14 1/2	3 1/2
Portchester Mod.	4	1	1	8 1/2	1 1/2
Gosp. Gram. "B"	5	2	0	9	2
Parbrook "B"	5	0	0	5	0
Division 2					
	P	W	D	G	P
St John's "F"	5	3	0	15	3
St John's "E"	5	2	0	8 1/2	2
Tech. High "B"	5	2	0	7	2
Port. Gram. "C"	5	1	0	7 1/2	1 1/2
Parbrook "C"	5	1	0	6	1
Fareham Sec.	5	1	0	5 1/2	1
Prices "B"	5	0	0	4	0
Gosp. Gram. "C"	5	0	0	2	0

Pairings for the 11th round of the Portsmouth and District Individual Championship (with scores to date in brackets) are:—
Richardson (15) v. Collins (15),
Comber (2) v. Jones (2), Watson (2) v. Hollington (2), Adams (2) v. Wells (2), West (2) v. Evans (2), Heywood (2) v. Pointon (2), Farmer (2) v. Price (2), March (2) v. Patge (2), Crossin (1) v. Gram (1), Breameld (1) v. H. Smith (1), Moor (1) v. J. Smith (2), Blossom (1) v. Lee (1), Davis (2) v. La Lond (1).

NATIONAL SCHOOLS TOURNAMENT

The local triumph over the success of St John's College in entering the area final of the National Schools Tournament turned out to be premature.

Bournemouth School appealed against the adjudicator's decision in the unfinished game (diagram published on 4th January), and their appeal was upheld. St John's accordingly lost the match and are out of the competition.

BATTLE OF BRITAIN TOURNAMENT

Entries are invited for the 1961 Battle of Britain Chess Tournament held in aid of the R.A.F. Benevolent Fund. Prizes up to £10 will be awarded and although any player resident in Great Britain is eligible, matches have to be played in the Greater London area.

Closing date for entries 4th February. Send to Mr. J. Kennedy, 70 Meadway, Bromley, Kent.

PROBLEM

The final moves in the End-Game Study by Mr. Pratten last week were: K - N - B2, K - K6, N - N4 - K - B5, B - N - K5, K - K6, N - B3, K - N; P - R(6) - and White wins easily.

This week we have another original composition by P. M. Collins of Portsmouth Grammar School — key move to solution next week.

LATE NEWS

Young Pompeians draw their Hants League match against Southampton. Additional Portsmouth League results: Fareham "B" 1 1/2, Portsmouth "B" 3 1/2, De Havillands "A" 2, Gosport "A" 3, De Havillands "A" 1, Cosham "B" 2.