



Chess Notes

FAREHAM 'B' RETAIN LEAGUE LEADERSHIP

FAREHAM'S "B" team drew a keenly contested match against Gosport and retain the lead in Division II of the Portsmouth and District Chess League.

St John's College "A" team beat their "B" team to give them their first win of the season.

Results:

Senior Section—Division 2: Fareham "B" 2½, Gosport 2½ (F. Johnson 1, A. N. Dossett 0; A. F. Garner ½, G. E. Mellows ½; T. Bayliss 0, A. F. Brameld 1; R. Hughes 1, J. Hardcastle 0; R. Tyack 0, H. J. Taylor 1).

St John's "A" 4, St John's "B" 1 (P. James 1, G. Green 0; D. P-Bird 0, F. Aribarg 1; C. Thomas 1, C. Green 0; K. Harrison 1, P. Miller 0; S. Bates 1, P. Collinane 0).

Senior Section

DIVISION 1

	P	W	D	G	P
Fareham "A"	2	3	0	11	2
Portsmouth "A"	4	2	0	12	2
Comm. Ctr.	2	1	0	3½	1
R.N.P.L.	2	1	0	4½	1
Cosham	2	0	0	4	0

DIVISION 2

	P	W	D	G	P
Fareham "B"	5	4	1	12½	4½
Portsmouth "B"	4	2	1	15	3½
Gosport	4	2	2	15	2
Ports. Grammar "A"	4	2	0	12½	2
St John's "A"	4	1	0	6	1
St John's "B"	5	0	0	6	0
Cyanamid	4	0	0	2	0

MAXIMUM POINTS

The third round of the local Individual Championship has been completed and remaining results were: Davis 0, Collins 1; Crossin 1, O'Donovan 0 (def.); Bloxham 0 (def.), Butler 0 (def.).

The three players still with maximum points are Dr. B. G. Wells (Portsmouth), Dr. A. J. Pointon (Portsmouth), and P. M. Collins (Portsmouth Grammar School).

Pairings for Round 4 are: Wells (2) v. Pointon (2); Collins (2) v. Carter (B.) (2); Adams (2) v. Davis (2); Brameld (2) v. Makar (2); Potter (2) v. Crossin (2); Taylor (1½) v. La Lond (2); Grant (2) v. Farmer (1½); Richardson (1) v. Noke (1½); Carter (B.) (1) v. Smith (H.) (1); O'Donovan (1) v. Lee (1); Smith (J.) (1) v. Heywood (1); Garner (½) v. Brading (1); Press (0) v. Bloxham (0); Butler has a bye.

The next County match is against Buckinghamshire on 50 boards in London on January 23.

In the Hants Individual Championship Tournament there are no players with full points and the lead is at present shared between M. Thompson, J. Valler and A. C. Barton (all of Southampton), and W. Makar (Portsmouth).

Mr. Pratten (Fareham) has withdrawn from the contest, and the game between Richardson and Ventham has been postponed.

Results in Round 3 are: Makar ½, Thompson ½; Barton 1, Edmonds 0; Henshaw 0, Valler 1; Martin ½, La Lond ½; Russell 0, Carter 1; Bevis 1, Wells 0; Goggin 0, Taylor 1; Butler 0 (def.), Pratten 0 (def.); Smith had a bye.

Pairings in Round 4 (with scores to date) are: Thompson (2½) v. Valler (2½); Makar (2½) v. Barton (2½); Carter (2) v. Bevis (2); Taylor (2) v. Martin (1½); Edmonds (1½) v. Henshaw (1½); La Lond (1½) v. Russell (1); Wells (1) v. Richardson; Smith (1) v. Goggin (1); Ventham v. Butler (0).

Chess Notes

FAREHAM TITLE HOPES RECEIVE SETBACK

FAREHAM'S "A" team experienced a set-back in the struggle for supremacy in the Portsmouth League when, with their strongest team out, they could do no better than finish 2—2 against R.N.P.L. with one game for adjudication.

Being a pawn down in this unfinished game, they can hope for nothing better than a draw, and a half point for the match.

This will narrow Fareham's lead over Portsmouth and encourage the latter team to make renewed efforts to retain the title.

The key game in the closely-fought match was both exciting and unusual. P. Cartmell (Fareham), in an endeavour to play an aggressive game, was aiming at the Evans Gambit. It was then a question of the "biter being bitten," for E. Taylor (R.N.P.L.) played the "Wilkes Barre" defence, and the Fareham player lost in 16 moves, after defending desperately for most of the game.

For the benefit of those (like Mr. Cartmell) who have never before heard of this line, it goes:

1. P-K4 P-K4; 2. N-KB3 N-QB3; 3. B-B4 N-KB3; 4. N-N3 B-B4; 5. N×P B×P (ch).

The normal continuation is: 6. K-K2; but the game in question went:

6. K-B1 Q-K2; 7. N×R P-Q4; 8. K×B N×P (ch); 9. K-B1 Q-R5; 10. Q-B3 B-K3; 11. B-N5 K-K2; 12. P-RN3 Q-R6 (ch); 13. K-N1 R-KB1; 14. Q-N2 Q×Q (ch); 15. K×Q R-B7 (ch); 16. K-N1 N-Q5; 17. Resigns.

DECISIVE WIN

In the Second Division, Fareham's "B" team were more successful and managed to obtain a decisive win over Portsmouth "B."

Scores:

Senior Section — Division II: Portsmouth "B" 1, Fareham "B" 4 (W. Makar 1, A. F. Garner 2; J. E. Smith 0. C. Brading 1; A. Bacon 0, R. Hughes 1; R. Speller 0, T. Bayliss 1; B. March 0, D. Bloxham 1).

TABLES SENIOR SECTION

Division I					
	P	W	D	G	Pt
Fareham "A"	3	2	0	11	3
Portsmouth "A"	4	2	0	12	2
Comm. Ctr.	3	1	0	5½	1
R.N.P.L.	3	1	0	4½	1
Cosham	2	0	0	4	0
Division II					
	P	W	D	G	Pt
Fareham "B"	6	5	1	21½	5½
Portsmouth "B"	5	3	1	16	1½
Gosport	4	2	2	15	3
Ports. Gramm. "A"	4	2	0	12½	3
St John's "A"	4	1	0	6	1
St John's "B"	5	0	0	6	0
Cyanamid	4	0	0	2	0

A new Chess Club has been formed at the Southsea Community Centre. At the moment membership is nine, most of whom are beginners.

Talks are being arranged by experienced players, and it is hoped to put a team in the local Chess League next season.

Chess Notes

Fareham May Regret Loss Of Half-point

THE unfinished game in the Portsmouth League match Fareham v. R.N.P.L. was judged a draw and Fareham may yet bitterly regret the loss of a vital half-point.

The teams drew 2½—2½, details being:

Fareham "A" 2½, R.N.P.L. 2½.
(W. H. Pratten ½, Dr. J. Holford ½; N. C. Taylor 1, W. J. Eaton 0; W. C. Martin ½, P. J. Colson ½ (adj.); P. Cartmell 0, E. Taylor 1; F. Johnson ½, H. W. Tripp ½).

TABLES SENIOR SECTION DIVISION I

	P	W	D	G	P
Fareham "A"	4	3	1	13½	2½
Portsmouth "A"	4	3	0	12	3
R.N.P.L.	4	1	1	7	1½
Comm. Ctr.	3	1	0	8½	1
Cosham	3	0	0	4	0

DIVISION II

	P	W	D	G	P
Fareham "B"	6	5	1	21½	5½
Portsmouth "B"	5	3	1	16	2½
Gosport	4	2	2	15	3
Ports. Gramm "A"	4	3	0	13½	3
St John's "A"	4	1	0	6	1
St John's "B"	5	0	0	6	0
Cynanamid	4	0	0	2	0

In the Individual Championship, Dr. Wells drew with Dr. Pointon and A. F. Brameld did well to share a point with W. Makar. Other fourth round results were:—La Lond 1, Taylor 0; Carter (R.) 1, Smith (H.) 0; Potter 0, Crossin 1; Smith (J.) 0, Heywood 1; Garner ½, Brading ½; Press 1, Bloxham 0.

HANTS LEAGUE

Fareham lost heavily to Southampton in their recent Hampshire League match, W. H. Pratten on top board being their only player to win a game.

Scores: Fareham 1½, Southampton 3½. (W. H. Pratten 1, A. C. Barton 0, N. C. Taylor ½, P. Marshall ½;

W. C. Martin 0, J. Valler 1; F. Johnson 0, G. L. Pritchard 1; E. G. Potter 0, D. A. Rawden 1).

TABLE

	P	W	D	G	P
Bournemouth	3	3	0	11½	3
Fareham	4	2	0	11	2
Portsmouth	3	1	1	7½	1½
Woolston	1	1	0	3	1
Cosham/Comm. Ctr....	2	1	0	5½	1
Southampton	3	1	0	7	1
University	3	0	1	4	½
Andover	1	0	0	½	0

In the County Individual Championships, Richardson beat Ventham by default in the postponed third round game, and the only fourth round result so far received is Wells 1, Richardson 0. Ventham has now withdrawn from the competition.

COUNTY MATCH

The match against Bucks scheduled to be played in London on January 23 has been postponed until the following Saturday.

BOGNOR

A 30-page brochure giving full details of the eighth Bognor Regis International Chess Congress has recently been issued, and is obtainable free of charge from the Congress Director, Woodlands Court, Withdean Road, Brighton (postage 5d.)

Last year there were 306 entries, and it is expected that this figure will be exceeded this Easter.

Chess Notes

Close Finish In Schools' Section

PLAY has recommenced in the Schools' Section, and Portchester Modern School started the new term in good form. Their win against Price's School puts them only one point behind Gosport Grammar, with two matches still to play.

In the Senior Section, Portsmouth Grammar School were one short in their match against Portsmouth "A" and lost heavily.

Senior Section (Division II).—
 P.G.S. "A" 1, Portsmouth "B" 4; (Default 0, W. Makar 1; J. Venn 0, J. P. Price 1; P. M. Collins 0, J. E. Smith 1; D. Watkins 0, R. Speller 1; T. Moore 1, B. Lee 0).

Schools' Section (Division III).—
 Prices "B" 2, Portchester Mod. 3 (H. Curtis 0, D. Coates 1; R. Downes 1, W. Waller 0; A. Vickers 0, A. Wynn 1; M. Holloway 0, N. Tining 1; M. Earrey 1, D. Magriddle 0).

SENIOR SECTION

Division	P	W	D	G	P
Faceham "A"	4	3	1	12½	2½
Portsmouth "A" ...	4	2	0	12	3
R.N.P.L.	4	1	1	7	1½
Comm. Centre	2	1	0	3½	1
Cosham	1	0	0	4	0
Division II					
Fareham "B"	6	5	1	21½	5½
Portsmouth "B" ...	6	4	1	20	4½
Gosport	4	2	2	15	3
Porta. Gramm. "A" ..	5	2	0	14½	3
St John's "A"	4	1	0	6	1
St John's "B" ...	5	0	0	5	0
Cyanamid	4	0	0	2	0

SCHOOLS' SECTION

Division I	P	W	D	G	P
Prices "A"	2	2	0	6	2
Gosp. Gramm. "A" ..	4	2	0	19½	2
St John's "C" ...	1	1	0	2½	1
St John's "D" ...	2	0	0	2½	0
Porta. Gramm. "B" ..	0	0	0	1½	0
Division II					
Gosp. Gramm. "B" ..	6	5	0	19½	5
Portchester Mod. ...	4	4	0	15	4
Prices "B"	4	1	0	7½	1
Porta. Gramm. "C" ..	1	1	0	4	1
St John's "F" ...	1	0	0	1	0
St John's "E"	2	0	0	4	0
Fareham Sec.	2	0	0	3	0

Further fourth round individual results are:—(Adams 0, Davis 1; Collins 1, Carter (B) 0 (def.); O'Donovan 0 (def.), Lee 1; Grant 1, Farmer 0 (def.).
 P. M. Collins (P.G.S.) leads with four points, closely followed by Dr.

Wells (Portsmouth) and Dr. Pointon (Portsmouth), both with 2½ points.

HAMPSHIRE LEAGUE

It now looks as if either Woolston or Bournemouth will be Champions of the Hampshire League. Following several match results received, Fareham have dropped back to third place. The combined Cosham and Community Centre team did well to hold the strong Woolston team to the odd game.

Scores.—Cosham and Comm. Centre 2, Woolston 1, (G. Richardson 0, M. Thompson 1; R. W. Davis 0, G. Daw 1; S. F. Adams 0, R. S. Learmouth 1; P. M. Collins 1, T. Guisek 0, A. Crossin 1, R. Krause 0), Andover 1½, Southampton 2½, Woolston 2½, University 1½, Woolston 2, Andover

TABLE

Woolston	4	4	0	12½	4
Bournemouth	3	2	0	11½	3
Fareham	4	2	0	11	2
Southampton	4	2	0	10½	2
Portsmouth	2	1	1	7½	1½
Cosham Comm. Ctr. ..	1	1	0	7½	1
University	4	0	1	5½	½
Andover	3	0	0	4	0

In the Hampshire Individual Championship, further fourth round results are: Thompson 1, Valler 0, Makar 1, Barton 0, Carter 1, Bevis 0, La Lond 0, Russell 1. The position now is that M. Thompson (Southampton) and W. Makar (Portsmouth) share the lead with 2½ points each.

JAMBOREE

A Chess "Jamboree" is being held at Taunton's School, Southampton on February 17.

Several clubs outside the Southampton area have been invited, and it is expected that the Portsmouth League will be represented.

In this form of tournament, all teams place each other simultaneously, on a cross-pairing basis.

Chess Notes

FAREHAM "A" won their key match against the Portsmouth and District League champions and greatly improved their chances of gaining the title this season.

The home team was by no means at full strength and it did particularly well on the top boards, decisive wins being obtained against strong opposition on Nos. 1, 2 and 3.

In Division II, both Fareham "B" and Gosport won their latest matches and an interesting three-cornered struggle is developing for leadership.

St John's "F" have improved their position in the Under-15 Division of the Schools' Section, but only Gosport Grammar and Portchester Modern are really in the running for the Championship.

Results.—

SENIOR SECTION

Division I. — Fareham "A" 3½, Portsmouth "A" 1½. (N. C. Taylor 1, A. Carter 0; F. Johnson 1, Dr. A. J. Pointon 0; P. Cartmell 1, Lt. D. K. Butler 0; J. E. C. Grant ½, W. Makar ½; A. F. Garner 0, D. M. Heywood 1).

Division II. — Gosport 3½, Portsmouth Grammar School "A" 1½. (A. N. Dossett ½, P. M. Collins ½; G. E. Mellows 1, J. F. Watson 0; A. F. Bremald 1, T. Moore 0; H. J. Taylor 1, D. Watkins 0; H. J. Hardcastle 0, A. G. Fulton 1). St John's "B" 1, Fareham "B" 4. (G. Green 0, A. F. Garner 1; C. Green 0, C. Brading 1; F. Aribarg 1, R. Hughes 0; P. Miller 0, R. Tyack 1; P. Cullinane 0, H. Moir 1).

SCHOOLS SECTION

Division II. — Portsmouth Grammar "C" 2, St John's "F" 3. (I. Mansell 1, M. Rice 0; J. Huins 0, C. Leake 1; C. Goble 0, C. Malone 1; I. Lawrence 0, B. O'Brien 1; P. Westbrook 1, C. Jones 0).

SENIOR SECTION

Division I

	P	W	D	G	P
Fareham "A"	5	4	1	17	4½
Portsmouth "A"	5	3	0	13½	3
R.N.P.L.	4	1	1	7	1½
Comm. Ctr.	3	1	0	8½	1
Cosham	3	0	0	4	0

Division II

	P	W	D	G	P
Fareham "B"	7	6	1	25½	6½
Portsmouth "B"	6	4	1	20	4½
Gosport	5	3	2	18½	4½
Ports, Gramm. "A"	6	3	0	16	3
St John's "A"	4	1	0	6	1
St John's "B"	6	0	0	7	0
Cyanamid	4	0	0	2	0

SCHOOLS SECTION

Division I

	P	W	D	G	P
Price's "A"	2	2	0	6	2
Gosp. Gramm. "A"	4	2	0	10½	2
St John's "C"	1	1	0	3½	1
St John's "D"	2	0	0	3½	0
Ports, Gramm. "B"	1	0	0	1½	0

Division II

	P	W	D	G	P
Gosp. Gramm. "B"	6	5	0	19½	5
Portchester Mod.	4	4	0	15	4
St John's "F"	3	1	0	7	1
Price's "B"	4	1	0	7½	1
Ports, Gramm. "C"	4	1	0	6	1
St John's "E"	1	0	0	2	0
Fareham Sec.	2	0	0	3	0

Fifth-round pairings in the individual championship (with scores to date) are:—Pointon (3½) v Collins (4); La Lond (3) v Wells (3½); Crossin (3) v Grant (3); Davis (3) v Bremald (2½); Makar (2½) v Carter (R.) (2); Lee (2) v Potter (2); Noke v Adams (2); Heywood (2) v Carter (B.) (2); Brading (1½) v Taylor (1½); Farmer (1½) v Richardson; Press (1) v Smith (J.) (1); Smith (H.) (1) v Garner (1); Bloxham (0) has a bye.

Chess Notes

HAMPSHIRE TEAM DISAPPOINTING

HAMPSHIRE'S performance in their recent encounter with Buckinghamshire was disappointing, particularly as five points were lost by default.

The scores stand at 7½—9½ with three adjudications in the S.C.C. match and 19½—25½ (with five adjudications) in the Ambryns Shield contest. Hampshire has therefore lost the 20-board match and it is almost certain that they will be defeated in the 20-board match.

The local matches (12 strong) could only register 2½ points between them, as follows—

Went by N. C. Taylor (Fareham) on Bd. 15, W. Makin (Portsmouth) on Bd. 18, and G. Richardson (Cosham) on Bd. 27.

Draw by Dr. A. J. Panton (Portsmouth) on Bd. 5.

Losses by A. S. La Londe (Southton) Bd. 16, L. West (Cosham) Centre Bd. 20, D. M. Heywood (Portsmouth) Bd. 21, J. Grant (Fareham) Bd. 22, J. Smith (Portsmouth) Bd. 24, A. J. Carter (Fareham) Bd. 25 and M. Grant (Fareham) Bd. 26.

The game of J. P. Price (Portsmouth) Bd. 28 went for adjudication.

COUNTY FAIRINGS

In the County Individual Championship, pairings for the 5th round (with scores to date of those players who have completed four games) are—

Carter (1) v. Makin (2½); Thompson (2½) v. Taylor (2); Vaden (2½) v. Barton (2½); Davis (2) v. Russell (2); Panton v. Wells (2); La Londe (1½) v. Edwards; Martin (1½) v. Goggin and Richardson (1½) v. Smith.

Cosham beat Community Centre in the Portsmouth League match but although they improve their position slightly, are still unable to move off the bottom rung of the table.

RESULTS

Senior Section—Division 1: Community Centre (15), Cosham (25), Dulford & G. Richardson (1), R. W. Green & S. C. Hulse (1), R. Carter (1), A. Croome & S. F. Adams (1), C. F. Way (1), J. Williams & R. Post (1).

Senior Section

Division 1					
	P	W	D	G	P
Fareham 'A'	5	4	1	17	45
Portsmouth 'A'	1	3	2	19	1
R.N.P.L.	4	1	1	7	11
Union Centre	4	1	2	16	1
Cosham	4	1	2	15	1

Division 2

Division 2					
	P	W	D	G	P
Fareham 'B'	7	6	1	25	45
Portsmouth 'B'	6	4	1	20	45
Gosport	2	2	2	15	1
Port. Green 'A'	6	2	2	20	1
St. John's 'A'	4	1	2	11	1
St. John's 'B'	4	1	2	11	1
Cyrennoid	4	0	2	11	1

Schools Section

Division 1					
	P	W	D	G	P
Peter's 'A'	7	3	2	11	1
Gosport Grammar 'A'	4	3	2	19	1
St. John's 'C'	1	1	2	11	1
St. John's 'D'	2	0	2	11	1
Port. Grammar 'B'	1	0	2	11	1

Division 2

Division 2					
	P	W	D	G	P
Gosport Grammar 'B'	4	3	2	19	1
Portsmouth School	4	2	2	11	1
St. John's 'E'	2	1	2	11	1
Peter's 'B'	4	1	2	11	1
Port. Grammar 'C'	4	1	2	11	1
St. John's 'F'	1	0	2	11	1
Fareham Sec.	2	0	2	11	1

Fareham Chess Club held its annual Lightning Chess Championship, with twelve members competing.

F. Cart-ell ran out a worthy winner and achieved the notable distinction of winning all nine games.

Chess Notes

GOSPORT HARD ON FAREHAM'S HEELS

THERE has been considerable activity in both sections of the Portsmouth Chess League during the past week.

In the Senior Section, Community Centre shared a point with R.N.P.L., after the adjudication of an unfinished game had gone against them. Incidentally, all local players will be glad to see that Mr. L. West is in action again after a long illness.

Gosport beat St John's "A" and are now hard on Fareham's heels in Division II. Meanwhile, both St John's teams won against poorly-placed Cyanamid.

Interest in the Schools' Section is centred on the Under-15 Division, where Portchester Modern have the championship almost in their grasp. They play their final match next week, and as long as they do not lose by a greater margin than two games to three make certain of topping this table.

RESULTS

SENIOR SECTION

Division I.—Community Centre 2½, R.N.P.L. 2½. (R. W. Davis 0, Dr. J. Holford 1; R. Carter ½, Capt. G. P. Britton ½; S. F. Adams 0, W. J. Eaton 1; L. West 1, E. Taylor 0; R. Ross 1, P. J. Colson 0).

Division II.—St John's "A" 1½, Gosport 3½. (P. James 0, A. F. Brameld 1; D. Peniston-Bird 0, A. N. Dosssett 1; C. Thomas 1, G. E. Mellows 0; K. Harrison 0, J. Hardcastle 1; S. Bates ½, H. J. Taylor ½).

St John's "B" 5, Cyanamid 0. (G. Green 1, N. H. J. Wood 0; C. Green 1, R. Rudgeley 0; F. Aribarg 1, B. Davies 0; P. Cullinane 1, T. Thomas 0; B. Davis 1, A. Yarrow 0).
Cyanamid 1½, St John's "A" 3½.

SCHOOLS SECTION

Division II.—Portchester Modern 3, St John's "F" 2. (A. Wrenn 1, C. Leake 0; D. Coates 0, M. Rice 1; W. Wallen 1, C. Malone 0; N. Tinning 0, D. Johnson 1; D. Mugridge 1, R. Stavert 0).

Fareham Sec. 1, St John's "E" 4.

TABLES SENIOR SECTION

Division I	P	W	D	G	P
Fareham 'A'	5	4	1	17	4½
Portsmouth 'A'	5	3	0	13½	3
R.N.P.L.	5	1	2	9½	2
Comm. Centre	5	1	1	12½	1½
Cosham	4	1	0	7½	1

Division II	P	W	D	G	P
Fareham 'B'	7	6	1	25½	6½
Gosport	6	4	2	22	5
Portsmouth 'B'	6	4	1	20	4½
Ports Grammar 'A'	6	3	0	16	3
St John's 'A'	6	2	0	11	2
St John's 'B'	7	1	0	12	1
Cyanamid	6	0	0	3½	0

SCHOOLS SECTION

Division I	P	W	D	G	P
Price's 'A'	2	2	0	6	2
Gosport Grammar 'A'	4	2	0	10½	2
St John's 'C'	1	1	0	3½	1
St John's 'D'	2	0	0	3½	0
Ports Grammar 'B'	1	0	0	1½	0

Division II	P	W	D	G	P
Gosport Grammar 'B'	6	5	0	19½	5
Portchester Modern	5	5	0	18	5
St John's 'E'	2	1	0	6	1
St John's 'F'	4	1	0	9	1
Price's 'B'	4	1	0	7½	1
Ports Grammar 'C'	4	1	0	6	1
Fareham Sec.	3	0	0	4	0

Fifth-round Individual Championship results: La Lond 0, Wells 1; Crosin 0, Grant 1; Davis 0, Brameld 1; Makar ½, Carter (R) ½; Lee 1, Potter 0; Smith (H) ½, Garner ½.

NEW QUARTERS

Portsmouth Chess Club has set up new headquarters at Southsea Youth and Community Centre, King Street, Southsea. Club nights will be still on Wednesdays and Saturdays.

By Order of the Sheriff of Hampshire re MR. PETER WARD (unless previously replevied) and by Private Instructions.

ON THURSDAY NEXT
18th FEBRUARY, 1960
commencing at 10.30 a.m.

FIELD & PALMER

Chartered Auctioneers and Estate Agents
Will SELL by AUCTION at their Sale Rooms: 1, PEARL ASSURANCE BUILDINGS, COMMERCIAL ROAD, PORTSMOUTH
A Quantity of
MODERN AND ANTIQUE FURNITURE
CAFE EQUIPMENT AND HOUSEHOLD EFFECTS

Including 4 Bedsteads, Spring Interior Mattresses, several Wardrobes, Chest of Drawers, Fitted Travelling Wardrobe, Selection of Carpets and Rugs, etc., 3-Piece Suites, Easy Dining Sideboard, Modern Extending Dining Tables and Sets of Dining Chairs, Quantity of Brass and China, including two dinner services, 77 CURVED BACK WOOD SEATS in various Lots, Plate Glass Sandwich Display Case, PRESTCOLD ELECTRIC REFRIGERATOR, Electric Warming Plate, "MAGICOOK" INFRA RED GRILL, Potato Chipper, and variety of crockery and cutlery and useful Household Effects.

On view: Day prior to and Morning of Sale.
Catalogues (Price 3d.) from the Chartered Auctioneers' Offices, 28, Hampshire Terrace, Portsmouth. Telephone 25641/2.

Chess Notes

KEEN STRUGGLE FOR LEADERSHIP

THE struggle for leadership in the Under-15 Division of the Schools' Section in the Portsmouth League has been intensified.

Portchester Modern lost to St John's "E" and although they finish equal with Gosport Grammar on match points, they have been kept in second place by a mere half game point. Even so, this performance by Portchester Modern must go down in the records as a remarkably good effort and a great encouragement for other modern schools who are thinking about forming chess sections.

Meanwhile St John's "E" have won two more matches and are making a strong bid for the title. They have only to win their their remaining match by the odd game to make sure of topping the table.

In the Senior Section, St John's "A" share a point with Portsmouth "B," but St John's "B" lost heavily to Gosport.

Results.
Senior Section, Division II. — St John's "E" 1, Gosport 4. (G. Green 1, A. F. Brameld 1; C. Green 0, A. N. Denton 1; F. Ariburg 1, G. E. Mellows 1; P. Cullinane 0, J. Hardcastle 1; M. Willocks 1, H. J. Taylor 1). St John's "A" 2½, Portsmouth "B" 2½. (P. Pemberton-James 1, W. Makar 0; D. Peniston-Bird 0, J. Smith 1; C. Thomas 1, A. Bacon 0; K. Harrison 1, J. Cauty 1; S. Bates ½, B. March ½).

Schools Section, Division I. — Portsmouth Grammar School "B" 2½, St John's "C" 1½. (P. M. Collins 1, P. Pemberton-James 0; D. Watkins 0, D. Peniston-Bird 1; A. Fulton 1, C. Thomas 0; I. Mansell ½, K. Harrison ½; T. Moore 1, S. Bates 0).

Division II. — Portsmouth Grammar "C" 3, St John's "E" 5. (M. Westbrook 1, B. Davis 1; H. Gorton 1; A. Clark 1; D. Jones 0, C. Moore 1; J. Sims 1, A. Lakin 1; C. Goble 0, R. Shaw-Brown 1). St John's "E" 4, Price's "B" 1. (B. Davis 1, Default 0; A. Clark 1, R. Dudson 0; C. Moore 0, A. Vickers 1; A. Lakin 1, M. Davies 0; R. Shaw-Brown 1, M. Warriess 0). St John's "E" 4, Portchester Modern 1. (B. Davis 1, D. Coates ½; A. Clark 1, W. Wallen ½; C. Moore 1, A. Wynn 0; A. Lakin 1, N. Tinsling 0; R. Shaw-Brown 1, D. Muzzridge 0).

SENIOR SECTION

Division I					
	P	W	D	G	P
Fareham "A"	5	4	1	17	4½
Portsmouth "A"	5	3	0	13½	3
R.N.P.L.	5	1	2	9½	2
Comm. Centre	5	1	1	12½	1½
Cosham	4	1	0	7½	1

Division II					
	P	W	D	G	P
Fareham "B"	7	0	1	25½	6½
Gosport	7	5	2	26	6
Portsmouth "B"	7	4	2	22½	5
Price's Grammar "A"	6	3	0	16	3
St John's "A"	7	2	1	13½	2½
St John's "B"	8	1	0	13	1
Cranford	8	0	0	3½	0

SCHOOLS SECTION

Division I					
	P	W	D	G	P
Price's "A"	2	2	0	6	2
Gosport Grammar "A"	4	2	0	10½	3½
St John's "A"	2	1	0	5	1
Price's Grammar "B"	2	1	0	5	1
St John's "D"	2	0	0	3½	0

Division II

	P	W	D	G	P
Gosport Gramm. "B"	6	5	0	19½	5
Portchester Mod.	6	5	0	19	5
St John's "E"	5	4	0	19	4
St John's "F"	4	1	0	9	1
Price's "B"	5	1	0	8½	1
Port. Gramm. "C"	5	1	0	6	1
Fareham Sec.	3	0	0	4	0

CHAMPIONSHIP

In the Individual Championship, further fifth round results are: Pointon 1, Collins 0; Noke 0, Adams 1; Heywood 1, Carter (B) 0; Brading 0, Taylor 1; Farmer 0, Richardson 1.

Dr. Wells and Dr. Pointon (both of Portsmouth Chess Club) now share the lead with 4½ points, followed by P. M. Collins (Portsmouth Grammar School) and J. Grant (Fareham) each with four points.

B. S. Carter, has had to withdraw from the competition.

The combined team of Cosham and of Community Centre players lost to the strong composite Bournemouth team in the Hampshire League by one game to four. Detailed scores were as follows. — J. A. Henley 1, G. Richardson 0; E. W. Chandler 1, R. W. Davis 0; D. K. Bevis 1, R. Carter 0; G. W. S. Goggin 1, R. I. Ross 0; S. S. Michaels 0; A. Crossin 1.

Fareham put up a spirited fight against Woolston in this same competition, the score standing 1½—1½ with two games in the hands of the adjudicator.

TABLE

	P	W	D	G	P
Woolston	4	4	0	12½	4
Bournemouth	4	4	0	15½	4
Fareham	4	2	0	11	2
Southampton	4	2	0	10½	2
Portsmouth	3	1	1	7½	1½
Cosham/Comm. Ctr.	4	1	0	8½	1
University	4	0	1	5½	1½
Andover	2	0	0	4	0

Chess Notes

Holding Their Own In County League

PORTSMOUTH, Fareham, and Cosham Community Centre continue to hold their own in the strong Hampshire League competition, although Bournemouth and Woolston are both moving right away from the rest of the field.

Fareham shared a point with Woolston but unfortunately had to let the Bournemouth match go by default, because of team-raising difficulties.

The combined Cosham/Community Centre team crushed Andover, while Portsmouth drew against a strong Southampton team.

Results: Woolston 2½, Fareham 2½ (M. Thompson ½, N. C. Taylor ½; E. Learmouth ½, P. Cartmell 1; C. Newby 1, F. Johnson ½; T. Cupek ½, J. Grant ½; D. Drew ½, R. Tyack ½). Bournemouth 5, Fareham 0 (by default). Southampton 2½, Portsmouth 2½ (A. C. Barton ½, Dr. A. J. Pointon ½; P. L. Marshall ½, Dr. B. G. Wells ½; J. Valler ½, G. L. Comben 1; G. L. Pritchard ½, W. Makar ½; D. A. Rawden 1, D. M. Heywood ½). Cosham Comm. Ctr. 5, Andover 0 (G. Richardson 1, C. Henshaw ½; P. M. Collins 1, G. D. Young ½; S. F. Adams 1, W. A. Howard ½; A. D. Crossin 1, James Haynes ½; R. I. Ross 1, Rev. N. Robertson ½).

TABLE

	P	W	D	G	P
Bournemouth	5	5	0	20½	5
Woolston	5	4	1	13	4½
Southampton	5	2	1	12	2½
Fareham	5	2	1	12½	2½
Cosham Comm. Ctr.	5	2	0	12½	2
Portsmouth	4	1	2	10	2
University	4	0	1	5½	½
Andover	4	0	0	4	0

Further results of local players in the recent county match against Surrey were: Bd. 14, A. S. La Lond (Southsea) lost to B. Lyons; Bd. 27, D. M. Heywood (Portsmouth) lost to J. Bell; Bd. 10, Lieut. D. K. Butler (Portsmouth) drew with G. Hogg; Bd. 21, G. Richardson (Cosham) drew with M. Ridgwell; Bd. 23, A. F. Garner (Fareham) lost to H. G. Richards; Bd. 24, G. L. Comben (Portsmouth) beat J. Honlon; Bd. 26, P. M. Collins (Portsmouth Grammar) drew with R. Briggs; Bd. 28, R. I. Ross (Comm. Ctr.) beat J. MacGregor.

PORTSMOUTH LEAGUE

Both Portsmouth Chess Club teams gained comfortable wins, but it is becoming increasingly unlikely that either team will now be able to overtake the leaders of their respective divisions in the Portsmouth League.

There has been no play in the Schools Section during the week.

SENIOR SECTION

Division I. — Portsmouth 4, Comm. Ctr. 1 (Dr. A. J. Pointon 1, R. W. Davis ½; Dr. B. G. Wells 1, R. Carter ½; C. I. Comben 1, S. F. Adams ½; W. Makar ½, L. West 1; D. M. Heywood 1, R. I. Ross ½).

Division II. — Portsmouth "B" 4, St John's "B" 1 (W. Makar 1, G. Green ½; J. E. Smith 1, C. Green ½; A. Bacon 1, F. Aribarg ½; P. Campion 1, P. Cullinane ½; J. Canty ½, M. Willcocks 1).

DIVISION I

	P	W	D	G	P
Fareham "A"	5	4	1	17	4½
Portsmouth "A"	4	4	0	17½	4
Cosham	5	2	0	10½	2
R.N.P.L.	6	1	2	11½	2
Comm. Ctr.	4	1	1	13½	1½

DIVISION II

	P	W	D	G	P
Fareham "B"	5	3	1	22½	5½
Gosport	7	5	2	28	4
Portsmouth "B"	5	3	2	26½	4
Ports. Gramm. "A"	7	2	0	17½	3
St John's "A"	5	2	1	15	2½
St John's "B"	5	1	0	14	1
Cyanamid	5	0	0	2½	0

In the local Individual Championship, sixth-round results so far are: Grant ½, Pointon 1; Brameld 1, Crossin ½; Lee ½, La Lond 1; Smith (J.) ½, Smith (H.) 1.

INTER-LEAGUE MATCH

It is hoped to field a strong and fully representative team in the annual match, Portsmouth and District League v. Southampton Chess League which is being held at Taunton's School, Southampton on Saturday, March 12.

Local players who have already promised to take part are G. L. Comben (Portsmouth), W. J. Eaton (Gosport), A. S. La Lond (Southsea), W. Makar (Portsmouth), Dr. A. J. Pointon (Portsmouth), J. P. Price (Portsmouth), G. Richardson (Cosham), and Dr. B. G. Wells (Portsmouth). A. F. Brameld (Gosport), R. I. Ross (Comm. Ctr.), J. Grant (Fareham), A. D. Crossin (Cosham), E. Taylor (Gosport), and A. F. Garner (Fareham).

FAREHAM LEADING IN PORTSMOUTH LEAGUE

FAREHAM beat Community Centre and now have a clear lead of 1½ points over their nearest rivals in Division I of the Portsmouth League. Neither team in this match was at full strength, with Community Centre probably the harder hit by non-availability of key players.

In Division II, both Portsmouth "B" and Gosport won their latest matches, and are hard on the heels of Fareham "B".

Cyanamid are still without a win, but came near to beating Gosport, the latter team's No. 5 board delivering a surprise mate when two pieces down.

RESULTS

SENIOR SECTION

Division I. — Community Centre 1, Fareham "A" 4. (R. W. Davis 0, P. Cartmell 1; R. Jackson 0, F. Johnson 1; S. F. Adams 0, J. Grant 1; R. I. Ross 1, A. F. Garner 0, J. Wilkins 0, R. Tyack 1).

Division II. — Gosport 3, Cyanamid 2. (A. F. Bramfield 1, B. Davis 0; A. N. Dosselt 1, R. Rudgeley 0; Mrs. L. Clear 0, M. Downer 1; H. J. Taylor 0, N. H. J. Wood 1; J. H. Jones 1, A. Yarrow 0). Cyanamid 1, Portsmouth "B" 4. (P. Halder 0, A. Campion 1; M. Downer 0, J. Smith 1; N. H. J. Wood 0, A. Bacon 1; R. Rudgeley 0, B. March 1, B. Davis 1, P. Chadwick 0).

TABLES

SENIOR SECTION

Division I					
	P	W	D	G	P
Fareham "A"	5	5	1	21	5½
Portsmouth "A"	4	4	0	17	4
Cosham	5	2	0	10	2
R.N.P.A.	4	1	2	11	2
Comm. Ctr.	7	1	1	14	1½

Division II					
	P	W	D	G	P
Fareham "B"	9	3	1	21	8½
Gosport	8	6	2	23	7
Portsmouth "B"	8	4	2	20	7
Port. Grammar "A"	7	3	0	17	3
St. John's "A"	8	3	1	15	2½
St. John's "B"	9	1	0	14	1
Cyanamid	5	0	0	0	0

Remaining 8th round Individual Championship results are: — Richardson 1, Davis 0; Adams 0, Makar 1; Carter (R) 1, Potter 0; Nook 1, Press 0; Gattner 1, Blacham 0; Wolla 0, Collins 1; Taylor 1, Heywood 0; Farner 1, Reading 0. Dr. A. J. Poulton (Portsmouth) is now in the lead with 2½ points, with P. M. Collins (Portsmouth Grammar School) running second with 2 points.

HAMPSHIRE LEAGUE

Southampton beat Southampton University in the Hampshire League and consolidate their third place in the table, just ahead of the three local teams.

Result. — University 2, Southampton 3. (D. Groves 1, A. C. Barton 0, B. Harding 0, P. L. Marshall 1, D. Blackman ½, J. Valler ½; L. Hamilton ½, G. L.

Pritchard ½; W. Manto 0, D. A. Rawden 1).

TABLE

	P	W	D	G	P
Bournemouth	5	3	0	20	5
Woolston	5	4	1	13	4½
Southampton	6	2	1	16	2½
Fareham	4	2	1	17	2½
Cosham Comm. Ctr.	5	2	0	17	2
Portsmouth	4	1	2	10	2
University	5	0	1	7	1½
Andover	4	0	0	4	0

Postal Chess: Results are beginning to come in for the 1960 County and District Correspondence Chess Championship (Sinclair Trophy). The scores for Hampshire players in games so far completed are:—

Bd. 2 P. A. Ursell (Bournemouth) beat H. Bayfield (Norfolk). Bd. 11 L. E. Vine (Eastleigh) beat A. O. Atfield (Kew). Bd. 12 A. S. Le Loid (Southsea) beat K. A. Hubbard (Hort). Bd. 18 H. A. War (Emsworth) drew with J. E. McArd (I.O.M.). Bd. 19 S. L. Russell (Bournemouth) drew with J. W. Dutton (Cheshire). Bd. 25 Dr. B. G. Wolla (Portsmouth) beat G. A. Yates (Norfolk). Bd. 29 J. Grant (Fareham) lost to W. J. Morrish (Glam.).

The score of just over 70 per cent represents an encouraging picture of Hampshire prospects in this year's competition.

MORE THAN 200

Total entries to date in the 24 various events at the Bognor Regis Easter Chess Congress already exceeds 200, including the following international foreign masters:—

Count O'Kelly de Galwey (Belgium); B. Ivkov, N. Karaklasic, and J. Janosevic (all of Yugoslavia); M. Czerniak (Israel); J. Sedl (Hungary); M. Branovski (Netherlands); K. Darga (West Germany); G. Kotlanowski (U.S.A.).

Chess Notes

SHOCK DEFEAT MEANS CLUB CANNOT LOSE

FAREHAM CHESS CLUB are the new champions of the Portsmouth and District League, as Portsmouth's unexpected defeat by Cosham 'last week means that Fareham cannot now be overtaken.

The struggle for supremacy between the Portsmouth and Fareham clubs has been a feature of this competition for the last five years and is worth recounting.

The season 1955-56 saw Fareham regain the title from Cosham (having lost it to them the previous year).

In the 1956-57 season, Portsmouth experienced a resurgence and forced Fareham into second place.

The 1957-58 and 1958-59 seasons saw the same pattern, with Portsmouth champions and Fareham runners-up.

At the commencement of the present season, Fareham indicated their intention of making a comeback, and this year it was Portsmouth who could not stand the pace set by the Fareham club.

Results:
Senior Section—Division 1
 Cosham 1½, Portsmouth "A" 1½, S. C. Noke ½, Dr. A. J. Pointon ½, F. Way 1, default 0; A. D. Crossin 1, H. C. Bailey 0; T. Hollington 0, W. Makar 1; R. L. Paige 1, D. M. Heywood 0.

Division 2
 Fareham "B" 5, Cyanamid 0 (A. F. Garner 1, B. Davis 0; C. Brading 1, F. Thomas 0; R. Tyack 1, M. Downer 0; R. Hughes 1, P. Halder 0; T. Dayless 1, R. Rudgeley 0).

TABLES
SENIOR SECTION

Division 1					
	P	W	D	G	P
Fareham "A"	5	5	1	21	5½
Portsmouth "A"	7	4	0	19	4
Cosham	4	3	0	14	3
R.N.P.L.	6	1	2	11½	2
Commo Ctr.	7	1	1	14½	1½

Division 2					
	P	W	D	G	P
Fareham "B"	10	9	1	37½	9½
Gosport	8	6	2	29	7
Portsmouth "B"	9	6	0	30½	7
Ports. Gramm. "A"	7	5	0	17½	3
St John's "A"	8	2	1	15	2½
St John's "B"	3	1	0	14	1
Cyanamid	9	0	0	6½	0

Pairings in the 7th (and penultimate) round of the Portsmouth and District Individual Championship with scores to date in brackets, are:

Pointon (5½) v. Brameld (4½); Collins (5) v. Richardson (4); Wells (4½) v. Grant (4); Makar (4) v. La Lond (4); Carter, R. (3½) v. Taylor (3½); Crossin (3) v. Lee (3); Davis (3) v. Heywood (3); Smith, H. (2½) v. Farmer (2½); Adams (3) v. Garner (2½); Potte v. Press (1); Noke (2½) v. Bradin (1½); Blasham (1) v. Smith, J. (2)

INTER-LEAGUE MATCH

Twenty players from six local clubs represented the Portsmouth and District League in the annual match against Southampton League. Although they put up a spirited fight they were unable to break the sequence of wins for the Southampton team.

Portsmouth Chess Club had the honour of providing the top

six boards, while Gosport's contingent of five players did very well to collect four points between them.

The final score of Portsmouth League 8½, Southampton League 11½ was made up as follows:

PORTSMOUTH LEAGUE		SOUTHAMPTON LEAGUE	
Bd.	Player	Player	Points
1	Dr. A. Pointon (Portsmouth)	M. Thompson	0
2	Dr. B. Wells (Portsmouth)	L. E. Vine	1
3	G. Comben (Portsmouth)	G. L. Pritchard	½
4	W. Makar (Portsmouth)	P. Marshall	1
5	J. P. Price (Portsmouth)	L. C. Walters	1
6	D. Heywood (Portsmouth)	T. Culpick	0
7	P. M. Collins (Ports. Gr.)	C. Newby	1
8	W. J. Eaton (Gosport)	D. Drew	1
9	E. Taylor (Gosport)	M. G. Ford	0
10	T. Hollington (Cosham)	R. Thorne	1
11	A. D. Crossin (Cosham)	H. G. Deis	1
12	A. F. Brameld (Gosport)	C. J. G. Payne	0
13	A. F. Garner (Fareham)	M. D. Thomson	1
14	S. F. Adams (Com. Ctr.)	R. Pets	½
15	R. J. Ross (Com. Ctr.)	E. W. Engert	1
16	C. Brading (Fareham)	T. Mumford	0
17	R. Tyack (Fareham)	J. Popiel	1
18	R. Hughes (Fareham)	D. Kahn	½
19	J. Jones (Gosport)	K. Robinson	0
20	J. Hardcastle (Gosport)	Miss G. Moore	0
			8½
			11½

Chess Notes

PORTSMOUTH PLAYERS IN HAMPSHIRE TEAM

HAMPSHIRE obtained their second win of the season in the S.C.C.U. championship tournament when they met Oxfordshire at Winchester.

Four local players took part (three from Portsmouth Chess Club and one from Fareham), collecting 2½ points between them.

Oxfordshire's No. 1 (H. Booth) is a blind player, while their No. 9 (A. Whiteley), who held C. H. Henshaw to a draw, is only 12 years old.

Hampshire		Oxfordshire	
P. A. Ursell	0	H. Booth	1
M. E. Ventham	½	T. Williams	½
P. L. Marshall	0	P. Robinson	1
Cdr. A. J. Peters	1	Rev. H. Taylor	0
D. McCue	1	(Default)	0
D. K. Bevis	½	B. R. Cowley	½
A. C. Barton	0	A. Bruton	1
Dr. B. G. Weils	½	J. Walker	½
(Portsmouth)	½		
C. H. Henshaw	½	A. Whiteley	½
D. A. Rawden	0	Dr. Lawrence	1
L. E. Vine	½	C. Bridge-water	½
E. W. Chandler	1	F. Wood	0
W. C. Martin	1	N. Gascoyne	0
(Fareham)	1		
B. D. Harding	½	P. del Nevo	½
G. L. Pritchard	½	D. Jones	½
G. L. Comben	0	A. Footner	1
(Portsmouth)	0		
R. S. Learmouth	1	D. Robinson	0
W. Makar	1	M. F. Dix	0
(Portsmouth)	1		
S. H. C. Lucas	1	C. W. Stokes	0
R. E. Tinson	½	H. G. Taylor	½
	11		9

Hampshire League: The combined Cosham/Community Centre team (which, in this instance, seems to be all Cosham players) had a comfortable win over Southampton University in the Hampshire League and move up into fourth place in the table. Bournemouth still lead Woolston by half a point in this competition.

Results: Southampton University 1½, Cosham 3½ (Default 0, P. M. Collins 1; D. J. Groves ½, S. C. Nokes ½; B. D. Harding 0, A. D. Crossin 1; D. J. Blackman 1, R. L. Paige 0; W. Munro 0, T. Hollington 1).

TABLE

	P	W	D	G	P
Bournemouth	5	5	0	20½	5
Woolston	5	4	1	15	4½
Southampton	5	3	1	16	3½
Cosham Comm. Ctr.	6	3	0	17	3
Fareham	6	2	1	13½	2½
Portsmouth	4	1	2	10	2
University	6	0	1	9	½
Andover	4	0	0	4	0

Portsmouth League: Portsmouth "B" beat Gosport and thereby indirectly helped Fareham "B" to strengthen their

position in Division 2 of the Portsmouth and District League. Meanwhile Gosport won their match against St John's "A" and are now running exactly equal with Portsmouth "B."

A close finish is indicated in both divisions of the Schools' Section.

TABLES

Senior Section

Division 1					
	P	W	D	G	P
Fareham "A"	6	5	1	21	5½
Portsmouth "A"	7	4	0	19	4
Cosham	6	3	0	14	3
R.N.P.L.	6	1	2	11½	2
Comm. Ctr.	7	1	1	14½	1½

Division 2

	P	W	D	G	P
Fareham "B"	10	9	1	37½	9½
Gosport	10	7	2	34½	8
Portsmouth "B"	10	7	2	34½	8
Ports. Gramm. "A"	7	3	0	17½	3
St John's "A"	9	2	1	15½	2½
St John's "B"	9	1	0	14	1
Cyanamid	9	0	0	6½	0

Schools Section

Division 1					
	P	W	D	G	P
Ports. Gramm. "B"	3	2	0	8½	2
St John's "C"	3	2	0	8	2
Gosport Gramm. "A"	4	2	0	10½	2
Price's "A"	4	2	0	9½	2
St John's "D"	2	0	0	3½	0

Division 2

	P	W	D	G	P
Gosport Gramm. "B"	6	5	0	19½	5
Portchester Mod.	6	5	0	19	5
St John's "E"	5	4	0	19	4
St John's "F"	5	2	0	12	2
Price's "B"	5	1	0	8½	1
Ports. Gramm. "C"	5	1	0	6	1
Fareham Sec.	4	0	0	6	0

Portsmouth Grammar School's win puts them on top of Division 1, although only games average separates the first four teams. In Division 2, St John's "E" are poised for a last-minute "kill."

Results:

Senior Section—Division 2: Gosport 4½, St John's "A" ½ (A. F. Brameld 1, D. Peniston-Bird 0; A. N. Dossett 1, default 0; G. E. Mellows 1, K. Harrison 0; H. J. Taylor 1, S. Bates 0; J. Harcastle ½, A. Lakin ½, Portsmouth "B" 4, Gosport 1 (W. Makar ½, A. F. Brameld ½; G. Champion 1, A. N. Dossett 0; J. P. Price 1, G. E. Mellows 0; J. Smith 1, J. Harcastle 0; J. Canty ½, H. J. Taylor ½).

Schools Section—Division 1: Portsmouth Grammar "B" 3½, Prices "A" 1½ (P. M. Collins 1, H. Curtis 0; P. Mihalop 0, R. Tyack 1; T. Moore 1, B. Keen 0; D. Watkins 1, R. Downes 0; A. Fulton ½, A. Barkhuysen ½).

ST JOHN'S "E" WIN UNDER-15 SECTION

ST JOHN'S "E" are the 1960 under-15 champions in the Schools Section of Portsmouth and District League, and have earned the right to meet their counterparts of the Southampton League in a match for the Spedan Lewis Trophy (Hampshire under-15 championship).

In the Senior Section, activity has been confined to Division II, where Portsmouth Grammar improve their position considerably with three wins and, incidentally, help Fareham by taking a point off Gosport.

Cyanamid obtain their first win of the season. This team is rapidly gaining experience and will undoubtedly do much better next year.

There has been an adjustment in games points in this division. Portsmouth "B" called on an ineligible player and have had three game points disallowed. Gosport, St John's "B," and Cyanamid each benefit by one game point each.

Results: Senior Section, Division II.—St John's "A" 2, Portsmouth Grammar "A" 3 (P. James 0, J. F. Watson 1; D. Peniston-Bird 0, P. M. Collins 1; C. Thomas 1, T. Moore 0; K. Harrison 0, D. Watkins 1; S. Bates 1, A. Fulton 0).

Cyanamid 3½, St John's "B" 1½ (R. Rudgley 1, G. Green 0; M. Downer ½, C. Green ½; N. H. S. Wood 1, P. Miller 0; B. Davis 1, M. Willcocks 0; A. Yarrew 0, A. Clark 1).

Portsmouth Grammar "A" 3½, St John's "B" 1½ (P. M. Collins 1, C. Green 0; A. Maber 1, F. Aribarg 0; P. Mihalop 3, P. Miller 1; T. Moore 1, P. Cullinane 0; A. Fulton ½, C. Dawes ½).

Portsmouth Grammar "A" 3, Gosport 2 (P. M. Collins 1, A. F. Brameld 0; A. Maber ½, A. N. Dosssett ½; J. Watson 1, G. Mellows 0; J. Venn ½, J. Hardcastle ½; D. Watkins 0, H. J. Taylor 1).

Schools Section, Division II.—St John's "E" 4, St John's "F" 1 (B. Davis 1, M. Rice 0; A. Clark 1, C. Leake 0; C. Moore 0, C. Malone 1; A. Lakin 1, K. Taylor 0; R. Shaw-Brown 1, P. Tanter 0).

SENIOR SECTION

Division I					
	P	W	D	G	P
Fareham "A"	6	5	1	21	5½
Portsmouth "A"	7	4	0	19	4
Cosham	6	3	0	14	3
R.N.P.L.	6	1	2	11½	2
Comm. Ctr.	7	1	1	14½	1½
Division II					
Fareham "B"	10	9	1	37½	9½
Gosport	11	7	2	37½	8
Portsmouth "B"	10	7	2	31½	8
Ports. Gramm. "A"	10	6	0	27	6
St John's "A"	10	2	1	17½	2½
St John's "B"	11	1	0	18	1
Cyanamid	10	1	0	11	1

SCHOOLS SECTION

Division I					
Ports. Gramm. "B"	3	2	0	8½	2
St John's "C"	3	2	0	8	2
Gosport Gramm. "A"	4	2	0	10½	2
Price's "A"	4	2	0	9½	2
St John's "D"	2	0	0	3½	0
Division II					
St John's "E"	6	5	0	23	5
Gosport Gramm. "B"	6	5	0	19½	5
Portchester Mod.	6	5	0	19	5
St John's "F"	6	2	0	13	2
Price's "B"	5	1	0	8½	1
Ports. Gramm. "C"	5	1	0	6	1
Fareham Sec.	4	0	0	6	0

Results so far received in the League individual championship (seventh round) are: Pointon 1, Brameld 0; Collins 0, Richardson 1; Wells 1, Grant 0; Makar 1, La Lond 0;

Crossin 1, Lee 0; Davis 0, Heywood 1; Smith (H.) 0, Farmer 1; Adams ½, Garner ½.

HAMPSHIRE LEAGUE

Andover are still without a win in the Hampshire League, their latest defeat being by Southampton University.

Fareham lost their match against Portsmouth by 3½ games to ½, one result still being in the hands of the adjudicator.

Scores: Andover 1½, University 3½ (C. H. Henshaw 1, D. Groves 0; S. L. Russell 0, B. Harding 1; G. D. Young 0, B. Levy 1; W. A. Howard 0, L. Hamilton 1; Rev. N. Robertson ½, M. Roberts ½).

	P	W	D	G	P
Bournemouth	5	5	0	20½	5
Woolston	5	4	1	15	4½
Southampton	6	3	1	16	3½
Cosham/Comm. Ctr.	6	3	0	17	3
Fareham	6	2	1	13½	2½
Portsmouth	4	1	2	10	2
University	7	1	1	12½	1½
Andover	5	0	0	5½	0

INDIVIDUAL CONTEST

Sixth round results in the County Individual Championship were: Henshaw ½, Thompson ½; Valler 1, Carter 0; Russell 0, Makar 1; Taylor 0, La Lond 1; Wells 1, Smith 0; Barton ½, Bevis ½; Goggin 0, Richardson 1.

M. Thompson (Southampton) is half a point ahead of W. Makar (Portsmouth) and J. Valler (Southampton) and needs a win in the final round to make sure of the title.

Pairings for seventh and last round (with scores to date) are: La Lond (3½) v. Thompson (5); Makar (4½) v. Valler (4½); Barton (3) v. Henshaw (4); Richardson (3) v. Taylor (3); Wells (3) v. Russell (3); Smith (1) v. Bevis (2½); Goggin (2) has a bye.

THIS service is available from Monday to Friday Inclusive.

Chess Notes

SCHOOLS CHAMPIONS STILL NOT KNOWN

FAREHAM "A" shared a point with Cosham in Division I of the Portsmouth Chess League, while Portsmouth "A" gained a clear-cut win over R.N.P.L.

In Division 2, Cyanamid continue to show improving form, beating Portsmouth Grammar School and moving away from the foot of the table.

An interesting situation exists in Division I of the Schools Section. St John's 'C' now have three match points and 12 games points. The score in the match Portsmouth Grammar 'B' v St John's 'D' stands at 3-1 with one game for adjudication. If Portsmouth Grammar are awarded a win for this outstanding game, they will be School champions. If they are given a loss, then the title goes to St John's 'C.'

It is not often that so much depends on result of a single adjudication.

RESULTS

Senior Section:

Division I.—Fareham 'A' 2½, Cosham 2½, (N. C. Taylor ½, G. Richardson ½; P. Cartmell 1, S. C. Noke 0; F. Johnson 1, A. Crossin 0; J. Grant 0, T. Hollington 1; E. G. Potter 0, C. F. Way 1). Portsmouth 'A' 4½, R.N.P.L. ½ (Dr. A. J. Pointon 1, W. J. Eaton 0; Dr. B. G. Wells ½, D. J. Blackman ½; Lt. D. K. Butler 1, P. J. Colson 0; G. L. Comben 1, E. Taylor 0; D. M. Heywood 1, H. W. Tripp 0).

Division II.—Cyanamid 3, Portsmouth Grammar 'A' 2 (T. Thomas 0, P. M. Collins 1; M. Downer ½, A. Maber ½; N. H. S. Wood 1, J. Venn 0, B. Davies ½, M. Sandercombe ½; R. Rudgley 1, A. Wallie 0). St John's 'B' ½, St John's 'A' 4½ (G. Green 0, P. James 1; C. Green 0, D. Peniston-Bird 1; P. Miller ½, C. Thomas ½; C. Dawes 0, K. Harrison 1; P. Cullinane 0, S. Bates 1).

Schools Section

Division I.—St John's 'C' 4, St John's 'D' 1 (P. James 1, F. Aribarg 0; D. Peniston-Bird 1, P. Miller 0; C. Thomas 1, P. Cullinane 0; K. Harrison 1, B. Davis 0; S. Bates 0, C. Dawes 1).

SENIOR SECTION

Division I

	P	W	D	G	P
Fareham 'A'	7	5	2	23½	6
Portsmouth 'A'	8	5	0	23½	5
Cosham	7	3	1	16½	3½
R.N.P.L.	7	1	2	12	2
Comm. Centre	7	1	1	14½	1½

Division II

	P	W	D	G	P
Fareham 'B'	10	9	1	37½	9½
Gosport	11	7	2	37½	8
Portsmouth 'B'	10	7	2	31½	8
Ports. Gram 'A'	11	6	0	29	6
St John's 'A'	11	3	1	22	3½
Cyanamid	11	2	0	14	2
St John's 'B'	12	1	0	18½	1

SCHOOLS SECTION

Division I

	P	W	D	G	P
St John's 'C'	4	3	0	12	3
Ports. Gram 'B'	3	2	0	8½	2
Gosport Gram 'A'	4	2	0	10½	2
Prices 'A'	4	2	0	9½	2
St John's 'D'	3	0	0	4½	0

Division II

	P	W	D	G	P
St John's 'E'	6	5	0	23	5
Gosport Gram 'B'	6	5	0	19½	5
Portchester Mod	6	5	0	19	5
St John's 'F'	6	2	0	13	2
Prices 'B'	5	1	0	8½	1
Ports Gram 'C'	5	1	0	6	1
Fareham Sec.	4	0	0	6	0

FINAL ROUND

Pairings for the 8th and final round in the individual championship (with scores to date) are:—Richardson (5) v Pointon (6½), Makar (5) v Wells (5½), Brameld (4½) v Collins (5), Heywood (4) v Crossin (4), La Lond (4) v Grant (4), Taylor (3½) v Farmer (3½), Carter (3½) v Adams (3½), Smith J. (3) v Noke (3), Garner (3) v Davis (3), Brading (2) v Smith H. (2½), Potter (2) v Bloxham (1), Lee (3) v Press (1).

Hampshire's record in the two County competitions this season can hardly be described as spectacular and the selection Committee will need to do some hard thinking during the summer.

The final placings in the Southern Section of the S.C.C.U. Championship were:—

	P	W	D	G	P
Surrey	6	5	1	72½	5½
Sussex	6	5	0	77½	5
Kent	6	3	1	62½	3½
Oxfordshire	6	1	3	59½	2½
Bucks	6	2	1	51½	2½
Hants	6	2	0	55½	2
Berks	6	0	0	41	0

Surrey now meet Essex, the Northern Section champions, in the final.

Final positions in the Amboyne Shield competition (Southern Section) were:—

	P	W	D	G	P
Surrey	4	4	0	122½	4
Sussex	4	3	0	116½	3
Kent	4	2	0	100½	2
Bucks	4	1	0	82	1
Hants	4	0	0	78½	0

Surrey play Middlesex in the final.

SCHOOLS TOURNAMENT

Winners of 'N' Zone (in which a number of local schools competed) were Winchester College who beat Itchen Grammar School by 4½ games to 1½.

The finalists from the 16 zones now pass into the first round of the last stage of the competition, in which Winchester College have been paired with Glyn Grammar School, Epsom.

Chess Notes

FAREHAM ARE HEAD OF TWO DIVISIONS

FAREHAM "B" made certain of the Second Division title of the Portsmouth and District League by beating Gosport, and the Fareham Club now have the distinction of topping both divisions.

R.N.P.L. quickly avenged Gosport's defeat by beating Fareham 'A', thereby depriving Fareham of an unbeaten record in this competition.

St John's 'C' are 1960 School Champions, finishing level with Portsmouth Grammar 'B' on match points, but with just that necessary 1/2 game point in hand. St John's College have also made it a 'double' this year by heading both Divisions in the Schools' Section.

It is now established that the team that St John's 'E' will meet in the Spedan Lewis Trophy final is King Edward VI Grammar School, Southampton.

Results:

Senior Section.—Division I: R.N.P.L. 3, Fareham 'A' 2 (W. J. Eaton 1/2, J. Grant 1/2; E. Taylor 1, E. G. Potter 0; P. J. Coulson 0, A. F. Garner 1; H. W. Tripp 1/2, R. Tyack 1/2; A. F. Brameld 1, R. Hughes 0).

Division II.—Gosport 2, Fareham 'B' 3 (D. J. Blackman 1, A. F. Garner 0; A. F. Brameld 1, C. Brading 0; A. N. Dossett 0, R. Hughes 1; G. Mellows 0, R. Tyack 1; J. Hardcastle 0, B. Keen 1).

St John's 'A' 3, Cyanamid 2 (P. James 1, M. Downer 0; D. Peniston-Bird 1, M. Thompson 0; C. Thomas 0, B. Davies 1; K. Harrison 0, N. H. S. Wood 1; S. Bates 1, R. Rudgeley 0).

Schools Section.—Division I.—Portsmouth Grammar "B" 3, St John's "D" 2 (P. M. Collins 1, F. Aribarg 0; T. Moore 1, P. Miller 0; P. Mihalop 0, A. Lakin 1; D. Watkins 1, B. Davies 0; A. Fulton 0, E. Clark 1).

TABLES Senior Section

Division	Division I				
	P	W	D	G	P
Fareham "A"	8	5	2	25 1/2	5
Portsmouth "A"	8	5	0	23 1/2	5
Cosham	7	3	1	16 1/2	3 1/2
R.N.P.L.	8	2	2	15	3
Comm. Ctre.	7	1	1	14 1/2	1 1/2

Division	Division II				
	P	W	D	G	P
Fareham "B"	11	10	1	40 1/2	10 1/2
Gosport	12	7	2	39 1/2	8
Portsmouth "B"	10	7	2	31 1/2	8
Ports. Gram. "A"	11	6	0	29	6
St John's "A"	12	4	1	25	4 1/2
Cyanamid	12	2	0	16	2
St John's "B"	12	1	0	18 1/2	1

Schools Section

Division	Division I				
	P	W	D	G	P
St John's "C"	4	3	0	12	3
Ports. Gram. "B"	4	2	0	11 1/2	3
Gosport Gram. "A"	4	2	0	10 1/2	2
Prices "A"	4	2	0	9 1/2	2
St John's "D"	4	0	0	6 1/2	0

Division II

	P	W	D	G	P
St John's "E"	6	5	0	23	5
Gosport Gram. "B"	6	5	0	19 1/2	5
Portchester Mod.	6	5	0	19	5
St John's "F"	6	2	0	13	2
Prices "B"	5	1	0	8 1/2	1
Ports. Gram. "C"	5	1	0	6	1
Fareham Sec.	4	0	0	6	0

HANTS LEAGUE

Both Fareham and the combined Cosham Community Centre teams have now completed their Hampshire League programme.

Fareham, who are experiencing serious team-raising difficulties at the moment, could muster only four reserve players for their important match against Portsmouth and lost heavily. Cosham Community Centre were in an even worse plight, and defaulted on two boards against Southampton.

Results: Fareham 1/2, Portsmouth 4 1/2 (Default 0; H. C. Bailey 1; J. Grant 1/2, Dr. A. J. Pointon 1/2; A. F. Garner 0, G. L. Comben 1; E. G. Potter 0, W. Makar 1; R. Tyack 0, D. M. Heywood 1).

Southampton 4, Cosham 1 (A. C. Barton 1/2, G. Richardson 1/2; P. L. Marshall 1, Default 0; J. Valler 1, Default 0; G. L. Pritchard 1, A. D. Crossin 0; D. A. Rawden 1/2, T. Hollington 1/2).

Bournemouth 4 1/2, Andover 1/2 (E. W. Chandler 1/2, C. H. Henshaw 1/2, D. K. Bevis 1, S. L. Russell 0; S. H. C. Lucas 1, G. D. Young 0; G. W. S. Goggin 1, W. Howard 0; G. Kilmister 1, Rev. N. Robertson 0).

TABLE

	P	W	D	G	P
Bournemouth	6	6	0	25	6
Woolston	5	4	1	15	4 1/2
Southampton	7	4	1	20	4 1/2
Portsmouth	5	2	2	14 1/2	3
Cosham Comm Ctr.	7	3	0	18	3
Fareham	7	2	1	14	2 1/2
University	7	1	1	12 1/2	1 1/2
Andover	6	0	0	6	0

The opening called the "Guico Piano" means "Quiet Game" in Italian. The following game played in the Cosham Club Championship may have started quietly but soon became extremely wild, with attack and counter-attack following each other in rapid succession.

White (P. M. Collins), Black (R. Paige). — 1. P-K4 P-K4; 2. N-KM3 N-OB3; 3. B-B4 B-B4; 4. P-Q3 P-Q3; 5. N-B3 N-B3; 6. B-N5 O-O; 7. N-Q5 K-R1; 8. N x N P x N; 9. B-R6 R-KN1; 10. B x P R x P; 11. N-R4 B x P(ch); 12. K-B1 B-N5; 13. K x R! B x Q; 14. N-B5! B-B6(ch); 15. K x B(B2) Q-N1; 16. B x Q B x R; 17. B-B7! Resigns.

Chess Notes

A PART from one outstanding First Division match between Cosham and Community Centre, the season's programme in the Senior Section of the Portsmouth and District League has now been completed.

Portsmouth 'B' collected only ½ a point from their last two matches but nevertheless finish runners-up to Fareham 'B' in Division 2.

Portsmouth Grammar School finish the season with the very satisfactory scores of 6½ points.

In the Schools Section, there are two matches yet to be played in Division 2 but these can only affect the positions at the bottom of the table.

Results:

Senior Section: Division 2.—Fareham 'B' 3, Portsmouth 'B' 2 (E. G. Potter ½, W. Makar ½; R. Hughes 1, J. Smith 0; R. Tyack 1, A. Bacon 0; C. Brading ½, B. Press ½, T. Bayliss 0, B. March 1).

Portsmouth 'B' 2½, Ports. Grammar 'A' 2½ (W. Makar 0, P. M. Collins 1; J. Smith 0, A. Maber 1; J. P. Price ½, J. F. Watson ½; B. March 1, J. Venn 0; R. Speller 1, A. Fulton 0).

TABLES SENIOR SECTION

Division 1					
	P	W	D	G	Pt
Fareham 'A'	8	5	2	25½	6
Portsmouth 'A'	8	5	0	23½	5
Cosham	7	3	1	16½	3½
R.N.P.L.	8	2	2	15	3
Comm. Ctr.	7	1	1	14½	1½

Division 2					
	P	W	D	G	Pt
Fareham 'B'	12	11	1	43½	11½
Portsmouth 'B'	12	7	3	36	8½
Gosport	12	7	2	39½	8
Ports. Grammar 'A'	12	6	1	31½	6½
St John's 'A'	12	4	1	25	4½
Cyanamid	12	2	0	16	2
St John's 'B'	12	1	0	18½	1

SCHOOLS SECTION

Division 1					
	P	W	D	G	Pt
St John's 'C'	4	3	0	12	3
Ports. Gramm. 'B'	4	3	0	11½	3
Gosport Gramm. 'A'	4	2	0	10½	2
Prices 'A'	4	2	0	9½	2
St John's 'D'	4	0	0	6½	0

Division 2					
	P	W	D	G	Pt
St John's 'E'	6	5	0	23	5
Gosport Gramm. 'B'	6	5	0	19½	5
Portchester Mod. ...	6	5	0	19	5
St John's 'F'	6	2	0	13	2
Prices 'B'	5	1	0	8½	1
Ports. Gramm. 'C' ...	5	1	0	6	1
Fareham Sec.	4	0	0	6	0

HAMPSHIRE LEAGUE

Woolston beat Bournemouth in the vital Hampshire League match but now need to beat Portsmouth to make sure of regaining the Championship title.

Portsmouth also have to meet Andover, which will then complete this competition.

Results:

Bournemouth 2, Woolston 3 (E. W. Chandler 0, M. Thompson 1; D. K. Bevis 1, G. Daw 0; G. W. S. Goggin 0, C. Newby 1; S. H. C. Lucas 0, D. Drew 1; G. Knott 1, N. Busk 0).

TABLE

	P	W	D	G	Pt
Bournemouth	7	6	0	27	6
Woolston	6	5	1	17	5½
Southampton	7	4	1	20	4½
Portsmouth	5	2	2	14½	3
Cosham Comm. Ctr.	7	3	0	18	3
Fareham	7	2	1	14	2½
University	7	1	1	12½	1½
Andover	6	0	0	6	0

FINAL ROUND

In the final round of the County Individual contest, W. Makar (Portsmouth) drew with J. Valler (Southampton), whilst C. H. Henshaw (Basingstoke) beat A. C. Barton (Southampton). This gives Makar, Valler and Henshaw five points each. M. Thompson (Woolston) already has five points and has yet to play A. S. La Lond. If Thompson wins (or even draws), he is the 1960 Champion and the three players with five points will share 2nd place. If he loses, it will be a quadruple tie for first place.

Chess Notes

THIRD DIVISION MAY START NEXT SEASON

THE one remaining match in the Senior Section of Portsmouth and District Chess League between Cosham and Community Centre ended in a draw.

With several new teams wishing to take part in this competition there is a possibility of a third division being formed next season.

Results. — Senior Section (Division I): Cosham 2½, Community Centre 2½; S. C. Noke 0, R. W. Davis 1; T. Hollington ½, R. Carter ½; C. F. Way 1, S. F. Adams 0; H. A. Smith 0, R. I. Ross 1; H. C. Smith 1, Default 0).

to be broken by the application of the "Sonneborne-Berger" system when all the other games are completed.

Other last round results were: Brameld 0, Collins 1; Heywood 0, Crossin 1; La Lond 1, Grant 0; Taylor 1, Farmer 0; Smith (J) 0, Noke 1; Lee 1, Press 0; Brading 1, Smith (H.) 0.

FINAL TABLES Senior Section Division I

	P	W	D	G	P
Fareham "A"	8	5	2	25½	6
Portsmouth "A"	8	5	0	23½	5
Cosham	8	3	2	19	4
R.N.P.L.	8	2	2	15	3
Comm. Ctr.	8	1	2	17	2

Division II

	P	W	D	G	P
Fareham "B"	12	11	1	43½	11½
Portsmouth "B"	12	7	3	36	8½
Gosport	12	7	2	39½	8
P'mouth Gram. "A"	12	6	1	31½	6½
St John's "A"	12	4	1	25	4½
Cyanamid	12	2	0	16	2
St John's "B"	12	1	0	18½	1

INDIVIDUAL CONTEST

In the Portsmouth and District Individual championship, G. Richardson (Cosham) beat Dr. A. J. Pointon (Portsmouth) in the final round, while Dr. B. G. Wells (Portsmouth) beat W. Makar (Portsmouth). This gives both Dr. Pointon and Dr. Wells 6½ points and the tie will have

COUNTY CHESS

Hampshire continues to do well in the 1960 County and District Correspondence Championship competition. The latest score is 10½ points from 14 games completed, and if this average of 75 per cent. can be maintained Hampshire has a good chance of winning the Sinclair Trophy and earning promotion.

Detailed results recently received are: Bd. 4, R. C. Mitchell (Southampton) drew against H. J. Collins (Dorset); Bd., 8, Dr. A. J. Pointon (Portsmouth) beat E. Eveleigh (Surrey); Bd., 10, P. L. Marshall (Southampton) beat H. K. Campbell (Yorks); Bd., 14, A. C. Barton (Southampton) drew against D. C. Black (Notts); Bd. 15, E. W. Chandler (Bournemouth) drew against D. M. Holmes (Warwicks); Bd. 21, C. H. Henshaw (Basingstoke) beat A. T. Little (Durham); Bd. 26, S. H. C. Lucas (Bournemouth) beat G. Benton (Staffs).



Chess Notes

Dr. B. G. WELLS IS 1960 CHAMPION

DR. B. G. Wells, of Portsmouth Chess Club is the 1960 individual champion of Portsmouth and District Chess League. Dr. Wells and Dr. A. J. Pointon (also of Portsmouth Chess Club) were equal with $6\frac{1}{2}$ points at the end of the contest, but Dr. Wells took first place by a narrow margin on "Sonneborne-Berger" count.

Third place was shared by G. Richardson (Cosham) and P. M. Collins (Portsmouth Grammar School) with six points.

Other placings were: A. S. La Lond, A. D. Crossin and W. Makar, 5 points; R. Carter, N. C. Taylor and A. F. Brameld, $4\frac{1}{2}$; S. C. Noke, V. Lee, D. M. Heywood and J. Grant, 4; A. F. Garner, R. W. Davis, G. Farmer and S. F. Adams, $3\frac{1}{2}$; J. E. Smith and C. Brading 3; H. Smith $2\frac{1}{2}$; E. G. Potter 2; D. A. Bloxham and B. J. Press, 1.

COUNTY CHESS

M. Thompson (Southampton) has won the Hampshire individual championsip title with six points from seven rounds. Second prize will be shared by W. Makar (Portsmouth), J. Valler (Southampton) and C. H. Henshaw (Basingstoke), who scored five points each.

Other scores were: Dr. B. G. Wells, D. K. Bevis, A. S. La Lond and S. L. Russell $3\frac{1}{2}$; N. C. Taylor, G. Richardson, G. W. S.

Goggin and A. C. Barton, 3; J. E. Smith $2\frac{1}{2}$.

GRADING LIST

The Hampshire Grading List has just been issued, giving 152 players in approximate order of strength.

Local players are graded as follows:

Grade 4a: W. H. Pratten (Fareham).
 Grade 4b: Dr. J. M. Holford (Gosport/R.N.P.L.).
 Grade 5b: A. Carter (Portsmouth).
 Dr. A. J. Pointon (Portsmouth).
 Grade 6a: N. C. Taylor (Fareham).
 Grade 6b: B. S. Carter (Comm. Ctr.), P. Cartmell (Fareham), G. L. Comben (Portsmouth).
 Grade 7a: G. Richardson (Cosham), Dr. B. G. Wells (Portsmouth).
 Grade 7b: H. C. Bailey (Portsmouth), Lt. B. K. Butler (Portsmouth), D. M. Heywood (Portsmouth), F. Johnson (Fareham), A. S. La Lond (Southsea), W. Makar (Portsmouth), W. C. Martin (Fareham), S. C. Noke (Cosham), J. P. Price (Portsmouth), C. F. Way (Cosham), L. West (Comm. Ctr.).
 Grade 8a: R. Carter (Comm. Ctr.), R. W. Davis (Comm. Ctr.), W. J. Eaton (Gosport/R.N.P.L.), R. I. Ross (Comm. Ctr.), E. Taylor (Gosport/R.N.P.L.).
 Grade 8b: S. F. Adams (Comm. Ctr.), A. F. Brameld (Gosport/R.N.P.L.), P. M. Collins (Portsmouth Grammar School), A. D. Crossin (Cosham), G. W. Farmer (Fareham), J. Grant (Fareham), T. Hollington (Cosham), H. W. Tripp (Gosport/R.N.P.L.).



Chess Notes

WOOLSTON COMMUNITY CENTRE are the Hampshire League Champions. Throughout the season just ended it seemed that the competition had to be won by either Woolston or Bournemouth, and for a time it looked as if Bournemouth were safely home.

The win against Bournemouth, followed by their latest win against Portsmouth finally turned things in Woolston's favour, and they emerged victors by half a point.

The one outstanding match between Portsmouth and Andover has not yet been played, and it rather looks as if it will now be abandoned.

Results:—

Woolston 4, Portsmouth 1 (M. Thompson 1, Dr. A. J. Pointon 0; G. Daw 1, Dr. B. G. Wells 0; R. S. Learmouth 1, Default 0; A. Edmonds $\frac{1}{2}$, W. Makar $\frac{1}{2}$; C. Newby $\frac{1}{2}$, J. P. Price $\frac{1}{2}$).

TABLE

	P	W	D	G	Pt
Woolston	7	6	1	22	6 $\frac{1}{2}$
Bournemouth	7	6	0	27	6
Southampton	7	4	1	20	4 $\frac{1}{2}$
Cosham Com. Ctr. ...	7	3	0	18	3
Portsmouth	6	2	2	15 $\frac{1}{2}$	3
Fareham	7	2	1	14	2 $\frac{1}{2}$
University	7	1	1	12 $\frac{1}{2}$	1 $\frac{1}{2}$
Andover	6	0	0	6	0

Only one more result has come

to hand in the County and District Correspondence Chess Tournament. This is.—Board 6—Cmdr. A. J. Peters beat B. Douthwaite (Glam.)

This makes Hampshire's score to date 10 $\frac{1}{2}$ out of 14 (75 per cent).

INTER-LEAGUE MATCH

The 50-board match between Southampton League and Bournemouth League resulted in a win for Southampton by 27 games to 23.

Scores on the first ten boards (Bournemouth players first) were: S. J. Leigh 0, M. Thompson 1; T. H. Bumpus 1, M. E. Ventham 0; D. K. Bevis $\frac{1}{2}$, R. C. Mitchell $\frac{1}{2}$; C. Mansfield $\frac{1}{2}$, H. L. Parsons $\frac{1}{2}$; E. W. Chandler $\frac{1}{2}$, A. C. Barton $\frac{1}{2}$; R. A. Eades 0, P. L. Marshall 1; H. G. Barnes $\frac{1}{2}$, D. A. Rawden $\frac{1}{2}$; H. J. Collins 0, G. L. Pritchard 1; R. E. Tinson 0, T. Guipek 1; H. Speck 1, M. W. Stone 0.



Chess Notes

RECORD ENTRY IN CHESS LEAGUE

THE new chess season commenced with the annual meeting of Portsmouth and District Chess League, at which 16 clubs and schools were represented. The line-up of teams in the coming competition is:

Senior Section.—Division 1: Fareham "A," Portsmouth "A," Cosham "A," R.N.P.L., Community Ctr., Portsmouth Grammar School "A." Division 2: Fareham "B," Gosport "A," Portsmouth "B," St John's "A," Cyanamid "A," Cosham "B," De Havilland "A." Division 3: St John's "B," Cyanamid "B," De Havilland "B," Fareham "C," Portsmouth "C," Gosport "B."

Schools Section.—Division 1 (over 15): Portsmouth Grammar "B," Portsmouth Grammar "C," St John's "C," St John's "D," Gosport Grammar "A," Gosport Grammar "B," Prices "A," Purbrook High. Division 2 (under 15): St John's "E," St John's "F," Gosport Grammar "C," Portchester Mod., Prices "B," Portsmouth Grammar "D," Fareham Secondary, Technical High.

J. E. C. Grant; Hon. Adjudicator, H. A. Way.

LATE ENTRY

In the Hampshire League there has been a last-minute entry by a local team calling themselves the Young Portsmouthians and led by A. F. Brameld (Gosport Grammar School).

This team aims at drawing upon the best material available from local schools. They will be up against some very stiff opposition and it will be interesting to see how they hold their own.

W. H. Pratten (Fareham Chess Club) did exceedingly well to share second place in the Premier Tournament at the Paignton Congress, especially as he finished above such famous players as L. W. Barden, D. V. Mardle, P. S. Milner-Jarry and W. Ritson Morry.

Sharing first place were A. W. Bowen, C. F. Girling and C. Kottner with five points. Equal second with four and a half points were W. H. Pratten, P. Harris and P. H. Clarke.

This total of 35 teams constitutes a record entry.

Presentation of the following trophies was made: Hubert Way Trophy (League Champions).—Fareham Chess Club. Bell Trophy (Individual Champion).—Dr. B. G. Wells. Spedan Lewis Trophy (Hants Under-15 Champions).—St John's College.

Officers re-elected were: President, H. A. Way; Vice-President, C. F. Way; Hon. Secretary, J. E. C. Grant; Hon. Treasurer,

A RECORD ENTRY FOR CHESS TOURNAMENT

FOLLOWING the record entry in the team championship this year's entry for the Individual Championship Tournament of the Portsmouth and District Chess League is greater than ever before. Twenty-eight players from five clubs and one school will go into the first round, as under:—

A. F. Brameld (Gosport) v. M. March (Portsmouth); G. L. Comben (Portsmouth) v. L. West (Community Ctr.); V. Lee (unattached) v. J. H. Jones (Gosport); A. D. Crossin (Cosham) v. P. M. Collins (Portsmouth Grammar School); A. S. La Lond (Fareham) v. T. E. Hollington (Cosham); D. M. Heywood (Portsmouth) v. G. W. Farmer (Fareham); H. C. Smith (Cosham) v. Dr. A. J. Pointon (Portsmouth); G. Richardson (Cosham) v. A. J. Evans (Fareham); R. L. Paige (Cosham) v. Dr. B. G. Wells (Portsmouth); N. C. Taylor (Fareham) v. R. W. Davis (Community Ctr.); S. G. Adams (Community Ctr.) v. E. G. Potter (Fareham); J. F. Watson (Portsmouth Grammar School) v. J. P. Price (Portsmouth); H. R. Moir (Fareham) v. J. Grant (Fareham); D. A. Bloxham (Fareham) v. J. E. Smith (Portsmouth).

Following a meeting of schools' representatives and the last-minute entry of several additional teams into the Schools Section of the League Team Championship, it has been decided to re-group the competitors as follows:—

Division I

Section "A."—St John's "C," Prices "A," Purbrook "A," Gosport Grammar "A," Portsmouth Grammar "B."

Section "B."—St John's "D," Purbrook "B," Gosport "B," Portchester Modern Technical High "A."

Division II

St John's "E," St John's "F," Prices "B," Gosport "C," Fareham Secondary Technical High "B," Portsmouth Grammar "C," Purbrook "C."

Teams in Division I will play each other twice, but those in Division II will play each other once only as last season.

p Kke.em

Chess Notes

HAMPSHIRE played their first match of the new season at Guildford and lost both the S.C.C.U. match (8½—11½) and the Amboyna Shield match (16½—33½). Thirteen local players took part, but they could muster only four points between them.

There are sixteen entries for this season's County Individual Championship, five of whom are from local clubs. This event will be run on "Swiss" lines and will have seven rounds.

In addition, and something of an innovation, is a Ladies' Individual Championship for which there are four entries. This will be a double round event on an "All-play-all" basis.

Details of players taking part are:—

Men's Tournament:

A. C. Barton (Southampton),	D. K. Bevis (Bournemouth),	A. M. Brameld (Gosport),	B. D. Edmonds (Woolston),	C. H. Harding (Southampton),	A. Henshaw (Basingstoke),	T. E. Hocking (Southampton),	P. L. Hollington (Cosham),	S. L. Marshall (Southampton),	J. E. Smith (Portsmouth),	M. Thompson (Southampton),	J. Valler (Southampton),	L. E. Vine (Eastleigh),
-----------------------------	----------------------------	--------------------------	---------------------------	------------------------------	---------------------------	------------------------------	----------------------------	-------------------------------	---------------------------	----------------------------	--------------------------	-------------------------

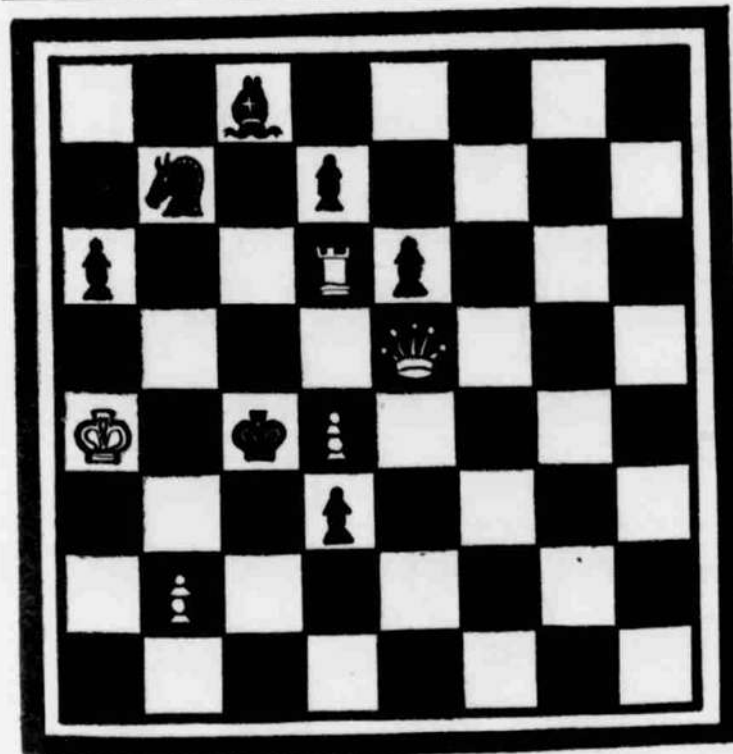
Dr. B. G. Wells (Portsmouth), L. West (Portsmouth Comm. Ctr.).

Ladies' Tournament: Miss M. Elliot (Stockbridge), Mrs. W. Pond (Farnborough), Mrs. K. Phelan (Ringwood), Miss Gillian Moore (Southampton).

The Editor having kindly consented to publish a Chess diagram in these weekly notes, we start with an original problem specially contributed by Mr. C. F. Way, President of the Cosham Chess Club.

Mr. Way describes it "of simple and light setting which might appeal to novice solvers." The solution will be published in next week's Chess Notes.

In the meantime, will all Chess players who consider that they have a position of special interest (either problems or interesting positions from actual play) please send them to the Local League Secretary (with permission to publish).



White to move and mate in two moves.

COUNTY RESULTS (Hampshire names first)

S.C.C.U. MATCH

M. Thompson 1, F. Parr 0; P. A. Ursell 0, W. E. C. Richards 1; M. E. Ventham 1, H. G. Felce 0; A. J. Peters 1, R. Smith 1; P. L. Marshall 0, E. J. Simpson 1; D. K. Bevis 1; T. Jover 1; A. M. Edmonds 1, R. E. Borland 1; D. McCue 1, H. P. Lieske 1; C. H. Henshaw 0, B. Bielski 1; A. C. Barton 0, C. H. Jago 1; L. C. Walters 1, R. G. White 0; Dr. A. J. Pointon (Portsmouth) 0, R. Waiss 1; J. Borland 0, F. J. Prouse 1; D. A. Rawden 1, G. C. Nurse 0; Dr. B. G. Wells (Portsmouth) 1, B. Lyons 1; A. F. Brameld (Gosport) 0, D. Mattingley 1; H. L. Parsons 0, M. Colquhoun 1; L. Vine 0, A. J. MacMinn 1; R. S. Pritchard 1, D. W. Haigh 0; R. Learmouth 1, K. E. James 0.

AMBOYNA SHIELD

P. L. Eastwood 0, B. C. Gold 1; B. D. Harding 0, R. Bott 1; S. H. C. Lucas 0, A. Weber 1; A. S. La Lond (Fareham)

0, D. H. Spencer 1; W. Makar (Portsmouth) 1, V. A. Vye 1; Lieut. D. K. Butler (Portsmouth) 1, R. E. Mattviks 1; H. Evans 1, V. J. Dunleavy 0; G. L. Comben (Portsmouth) 1, S. C. Love 0; R. J. Brown 0, G. W. Smith 1; L. West (Portsmouth Comm. Ctr.) 0, B. McCab 1; M. D. Thompson 0, T. W. White 1; D. J. Groves 0, R. Shaw 1; D. Blackman 0, J. H. Manners 1; P. M. Collins (Ports Gramm. Sch.) 1, A. Monkhouse 1; G. Richardson (Cosham) 0, D. Surf 1; J. B. Parker 1, W. J. Ferguson 0; J. P. Price (Portsmouth) 0, M. Ridgewell 1; A. J. Evans 0, J. J. Lander 1; J. E. C. Grant (Fareham) 1, C. H. Broughton 0; P. J. Patience 0, T. Wicher 1; A. F. Garner (Fareham) 0, A. G. Cooke 1; H. G. Dell 0, A. E. Saunders 1; J. M. Popiel 1; D. Parr 1; S. Savage 0, E. E. Fairbrother 1; J. Brown 0, H. E. Gook 1; Mrs. W. Pond 0, D. W. Cay 1; Mrs. K. Phelan 0, B. Mason 1; Miss G. Moore 1; J. F. Lane 0; E. W. Engert 0, Louis de Vence 1; G. W. Goggin 1, F. A. Winter 0.

Sharp Defeats in League Contests

PLAY in the team competitions of the Portsmouth and District Chess League has now commenced, and the first results to come in show sharp defeats for De Havilland "B" and St Johns "B," by Gosport "B" and Fareham "C" respectively.

In the Schools Section, Purbrook Par.'s first taste of competition play has been somewhat bitter—all three of their teams have been decisively beaten during the first week. They have, no doubt, learned something from their experience, if only that this competitive chess is a very serious business, indeed, and they will undoubtedly show improved results.

Technical High (another newcomer), on the other hand, are probably feeling a little overconfident, and judgment of their prowess must be reserved until they meet some of the "veterans."

RESULTS

Senior Section—Division 3: De Havillands "B" 0, Gosport "B" 5. (S. Harris 0, H. W. Tripp 1; K. Lawrence 0, J. Hardcastle 1; J. Simmonds 0, P. Bennett 1; D. Walker 0, A. Ferrier 1; J. Taylor 0. Mrs. L. Clear 1).

St John's "B" 1, Fareham "C" 4. (A. Clark 0, R. Tyack 1; P. Miller 0, C. Brading 1; C. Moore 1, D. A. Bloxam 0; C. Dawes 0, R. Hughes 1; A. Lakin 0, B. Keen 1).

Schools Section—Division 1 (Section "A"): Prices "A" 5, Purbrook "A" 0. (H. Curtis 1, A. Leadbetter 0; R. Tyack 1, S. Rook 0; B. Keen 1, R. Warren 0; C. Gay 1, D. Thomas 0, A. Barkhuysen 1, K. Firth 0).

Schools Section—Division 1 (Section "B"): Technical High "A" 4, Purbrook "B" 1. (L. Hill 0, A. Renouf 1; E. Gander 1, N. Walker 0; G. Arnold 1, G. Marsh 0; M. Poling 1, B. Hirst 0; R. Tringham 1, H. Norwood 0).

Schools Section—Division 2: Technical High "B" 4, Purbrook "C" 1. (P. Bugden 0, D. Nicholson 1; C. Davis 1, A. Jervis 0; J. Brindle 1,

R. Francis 0; J. Robertson 1, M. Grant 0; R. Bowyer 1, R. Lintott 0).

First round results so far received in the League Individual Tournament are Moir 0, Grant 1; Brameld ½, March ½; Lee 0, Jones 1; La Lond 1, Hollington 0; Smith (H.) 0, Poynton 1; Adams ½, Potter ½; Crossin 0, Collins 1.

NATIONAL SCHOOLS TOURNAMENT

Portsmouth Grammar School made a very good start in the first round of the National Schools Knock-out tournament, beating Tauntons School, Southampton by 3½-2½. The margin was greater than it appears at first sight, as Tauntons were an age group higher, and even had the score been 3-3, Portsmouth Grammar would have still won on handicap.

This win is interesting as a further indication that our schools are wresting the initiative from those of Southampton, which for a long time has been the stronghold of junior chess.

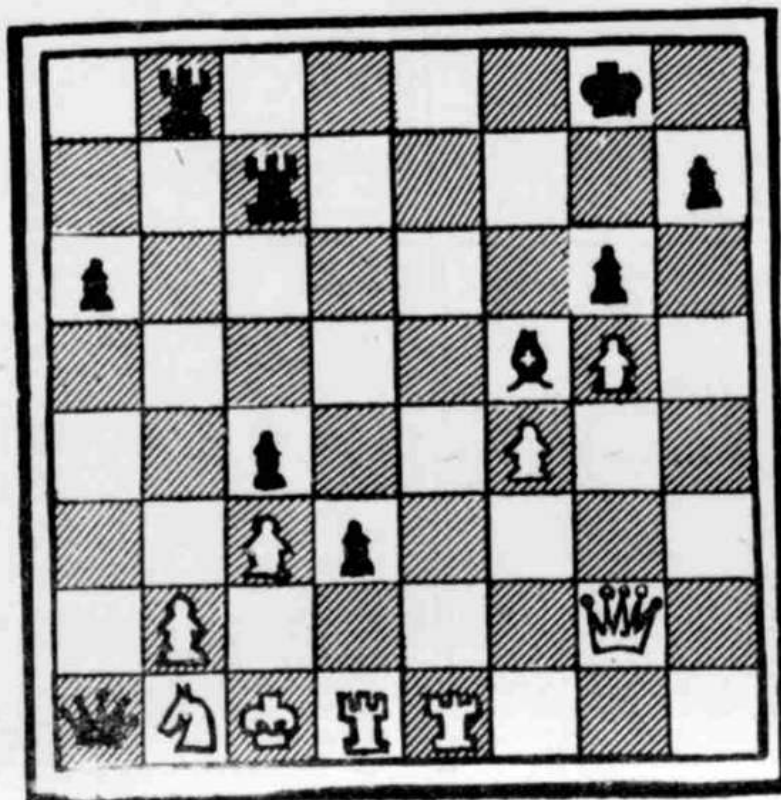
Full scores (Portsmouth Grammar names first): P. M. Collins 1, R. Peto 0; P. Mihalop 0, H. Thornton 1; T. Moore ½, D. Otto ½; D. Watkins 1, D. Saunders 0; I. Mansell 1, A. N. Other 0; C. Goble 0, R. Bailey 1.

Chess Problem. The solution to last week's "2 mover" composed by C. F. Way was Q-KR5 (complete block with added note 1...P-K4, 2Q-B7 mate). Two good tries are 1.R-N6 (defeated by 1...P-R4) and 1.Q-KN5 (defeated by 1...P-Q7).

We have this week a position which occurred in actual play a few years ago. Your League Secretary was playing with Black pieces in a match, the score standing at 2—all with only his game unfinished.

Having probably read somewhere that it was always good to double rooks on a file, he played ...R(2)-QN2. A groan immediately went up from the usual crowd of watchers and the League Secretary was still wondering what he had missed when he lost the game some 20 moves later.

Incidentally, White's reply to Black's move above was R-Q2, which gives a clue to what Black should have done to win the game out of hand.



LOCAL PLAYERS "BROKE EVEN"

HAMPSHIRE beat Berkshire by 11½ games to 7½ (with one for adjudication) in the latest S.C.C.U. championship match. The three local players taking part "broke even" with 1½ points between them.

Scores (Hampshire names first).— M. Thompson 1, C. Tadiello 0; M. E. Ventham 1, H. Brykiert 0; Cmdr. A. J. Peters ½, G. Blackburne ½; L. C. Walters 0, Major E. Woolmer 1; Default 0, A. N. Other 1; P. L. Marshall 0, A. Boyce 1; C. H. Henshaw 0, E. du Puget 1; A. C. Barton ½, M. Tarrant ½; Dr. A. J. Pointon (Portsmouth) ½, K. Ballard ½; J. Borland ½, S. Kissin ½; G. L. Pritchard 1, M. Duck 0; R. S. Learmouth A. W. Quittner A; Dr. B. G. Wells (Portsmouth) 1, Major Starett 0; M. Evans 1, F. Sevky 0; L. E. Vine 1, Sir P. Waterfield 0; A. S. Hocking ½, H. Clacy ½; B. D. Harding 1, R. Silk 0; S. L. Russell 1, D. G. Cooke 0; A. S. La Lond (Fareham) 0, R. Castle 1; J. B. Parker 1, H. Heppinstall 0.

PORTSMOUTH LEAGUE

The "heavy-weights" of the League have now joined battle, with some interesting results.

Portsmouth started badly by losing to Cosham, but went on to trounce Portsmouth Grammar School by five games to nil. Meanwhile, Fareham have beaten Community Centre by 3-1 with one for adjudication.

In the Schools' Section, Technical High received rough treatment from St John's College, but the result of the match, Technical High "A" v. Portchester Modern, was a keenly contested draw.

Results:—

Senior Section

Division 1. — Portsmouth Grammar "A" 0, Portsmouth "A" 5. (P. M. Collins 0, Dr. B. G. Wells 1; T. Moore 0, Lt. B. K. Butler 1; A. Fulton 0, G. L. Comben 1; D. Watkins 0, D. Mortimer 1; I. Maxwell 0, D. M. Heywood 1). Portsmouth "A" 1½, Cosham "A" 3½. (Dr. A. J. Pointon ½, G. Richardson ½; Dr. B. G. Wells 0, T. Hollington ½; G. L. Comben ½; S. C. Noke ½; H. C. Bailey 0, C. F. Way 1; D. M. Heywood 0, A. D. Crossin 1).

Schools' Section

Division 1 (Section B). — Technical High "A" 0, St John's "D" 5. (I. Hill 0, A. Clark 1; E. Gander 0, C. Moore 1; G. Arnold 0, P. Miller 1; M. Poling 0, C. Dawes 1; G. Dowdell 0, A. Lakin 1). Portchester Modern 2½, Technical High "A" 2½. (A. Jones 0, I. Hill 1; D. Coates 1, E. Gander 0; W. Wallen ½, G. Arnold ½; N. Tynling 1, M. Poling 0; D. Magridge 0, R. Tringham 1).

Division 2. — Technical High "B" 0, St John's "F" 5. (C. Davis 0, B. O'Brien 1, J. Robertson 0, J. Hawkins 1; P. Bugden 0, D. Johnson 1; J. Brindle 0, R. Stavert 1; R. Bowyer 0, L. Calloway 1).

In the Portsmouth and District Individual Championship, remaining first round results were. — Heywood 1, Farmer 0; Richardson ½, Evans ½; Blossom 0, Smith 1; Paige 0, Wells 1; Taylor 1, Davis 0; Watson 1, Price 0; Comben 1, West 0.

NEW HEADQUARTERS

Cosham Chess Club has returned to its original headquarters at Court Lane School, Hilary Avenue, Cosham, where it continues to meet on Thursday evenings. New members will be welcome.

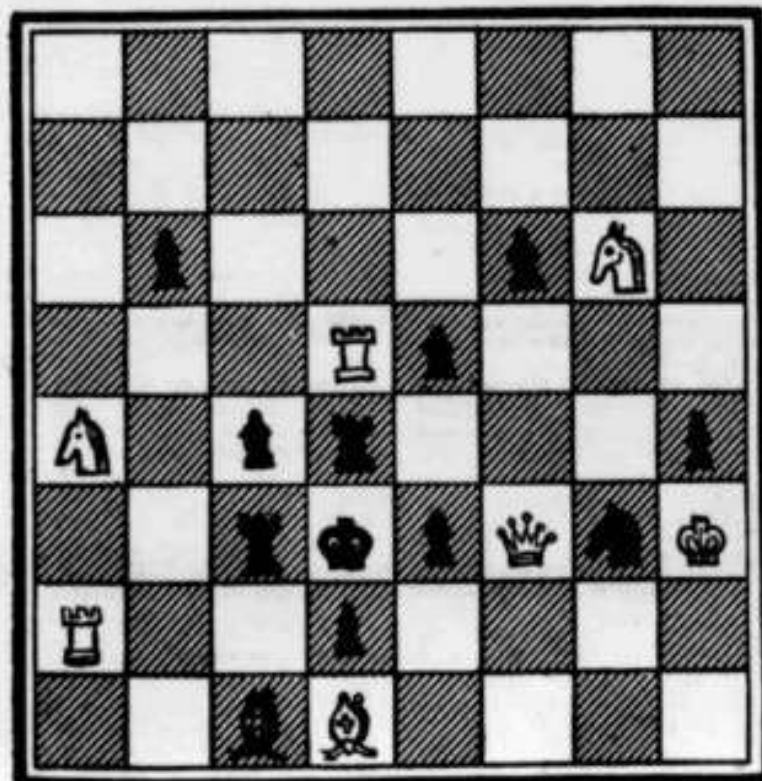
Chess players will be sorry to hear that Mr. Hubert A. Way, the League's Honorary Adjudicator, is in hospital. We wish him a speedy recovery.

In the meantime, Mr. W. H. Pratten has consented to make such adjudications as arise from local play.

CHESS PROBLEM

This week there is an original composition by Portsmouth Grammar School boy P. M. Collins.

One of the surprising facts that has arisen from this new feature is that not only is there much local interest in solving problems, but that we have composers in our midst who have been rather "hiding their lights under a bushel."



White to play, and mate in two.

A SWEEPING WIN OVER STRONG SIDE

THE sensation of the week was the sweeping win in the Hampshire League by Young Pompeians over the strong composite team drawn from the best players in the Bournemouth area. Sensation within sensation was the win in six moves by P. M. Collins against the very experienced S. H. C. Lucas. This went 1, P-K4, P-QB3; 2, P-Q4, P-Q4; 3, N-QB3, P x P; 4, N x P, N-Q2; 5, Q-K2, KN-B3??; 6, N-Q6 mate!

Had M. J. Dymond not made a weak move, when very short of time, our local boys might well have won 5-0.

The only other result in this competition is a win by Bournemouth against Salisbury. This latter team, although outside the County boundary, has been allowed to enter the Hampshire League Competition this year, as there is no corresponding contest in Wiltshire.

SCORES.—

Bournemouth 1, Young Pompeians 4. (D. K. Bevis 0, G. L. Comben 1; E. W. Chandler 1, M. J. Dymond 0; S. H. C. Lucas 0, P. M. Collins 1; H. Pollard 0, M. March 1; W. G. Poulton 0, A. F. Brameld 1).

Bournemouth 3, Salisbury 2. (D. K. Bevis 1/2, W. R. Bale 1/2; E. W. Chandler 0, P. Allen 1; C. Mansfield 1/2, F. S. Scanes 1/2; S. H. C. Lucas 1, J. D. Herring 0; W. G. Poulton 1, E. Bowen 0).

Probably the most interesting result in the Portsmouth and District League is the snatching of half a point by R.N.P.L. from a strong Fareham team. This, following Portsmouth's loss to Cosham (previously reported), seems to indicate that the question of who will finish the season as Champions, is probably more open this year than it has been for some time.

RESULTS—

SENIOR SECTION

Division 1

Community Centre 2, Fareham "A" 3. (R. W. Davis 0, N. C. Taylor 1; R. Carter 0, P. Cartmell 1; S. F. Adams 1, Default 0; L. West 1, A. S. La Lond 0, M. James 0, A. J. Evans 1).

R.N.P.L. 3 1/2, Portsmouth Grammar "A" 1 1/2. (W. J. Eaton 1/2, P. M. Collins 1/2; A. F. Brameld 1/2, J. F. Watson 1/2; P. J. Colson 1, T. Moore 0; H. W. Tripp 1/2, D. Watkins 1/2; E. Taylor 1, I. Mansell 0).

Fareham "A" 2 1/2, R.N.P.L. 2 1/2. (W. H. Pratten 1, W. J. Eaton 0; N. C. Taylor 1, A. F. Brameld 0; F. Johnson 1/2, P. J. Colson 1/2; A. S. La Lond 0, E. Taylor 1; A. J. Evans 0, H. W. Tripp 1).

Division 2

Portsmouth "B" 3 1/2, Fareham "B" 1 1/2. (W. Makar 0, J. Grant 1; M. March 1/2, E. G. Potter 1/2; J. P. Price 1, A. F. Garner 0; A. Bacon 1, G. D. Ratter 0, C. J. Champion 1, T. Bayliss 0).

Gosport "A" 4, De Havilland "A"

1. (J. Hardcastle 1/2, B. Smith 1/2; J. H. Jones 1, S. Shepherd 0; R. Clark 1/2, L. Langley 1/2; H. J. Taylor 1, R. Ralls 0; A. N. Dosssett 1, S. Harris 0).

Division 3

Portsmouth "C" 3, Cyanamid "B" 2. (J. E. Smith 1, A. Hollingdale 0; C. J. Campion 1, C. Mills 0; J. Cauty 1, R. Rudgeley 0; B. Press 0, T. Thomas 1; J. Hoskyn 0, A. Yarrow 1).

SCHOOLS SECTION

Division 1

St John's "E" 3 1/2, Portsmouth Grammar "C" 1 1/2. (A. Lakin 1, C. Goble 0; M. Rice 0, J. Huins 1; C. Malone 1, M. Westbrook 0; C. Leake 1/2, H. Gorton 1/2, P. Bicheno 1, A. Brown 0).

Both teams from St John's College are through to the next round in the National Schools Tournament. Their "A" team beat Ithen Grammar School by 3 1/2-2 1/2, while their "B" team finished 3-3 against Churcher's College, Petersfield.

As St John's "B" were two age groups lower than Churcher's, this was more than enough to give them a win on handicap. This gives our schools three teams in Round 2. Portsmouth Grammar School's success against Taunton's School having been previously reported.

Detailed scores.—

St John's "A" 3 1/2, Ithen Grammar 2 1/2. (P. Pemberton-James 1, M. Harvey 0; D. Peniston-Bird 1/2, D. Saunders 1/2; C. Thomas 1/2, M. Jupe 1/2; K. Harrison 1/2, M. Ryan 1/2; F. Aribarg 0, R. Midgley 1; A. Clark 1, D. Croucher 0).

St John's "B" 3, Churcher's College 3. (C. Moore 1, G. Brown 0; P. Miller 1, D. Kent 0; A. Lakin 0, R. Ferguson 1; M. Rice 0, F. Ferguson 1; C. Malone 0, D. Ethelston 1; B. O'Brien 1, A. Blake 0).

CHESS PROBLEM

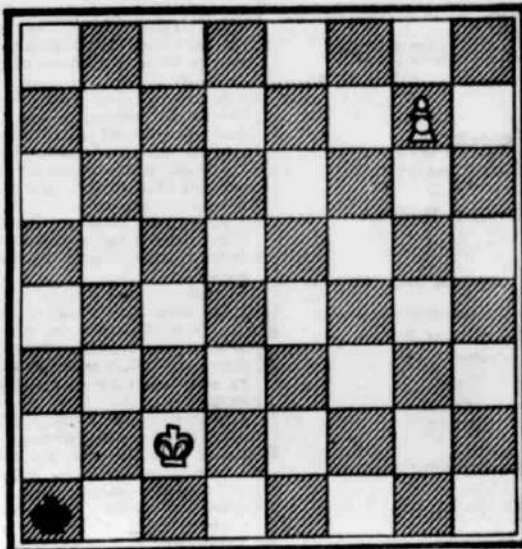
The position published on October 27 produced a lively crop of analysis. The actual game proceeded 35... K(2)-QN2? 36, R-Q2, R x P. 37, R x R, Q x R??

Both P. M. Collins (Portsmouth Grammar) and A. F. Brameld (Gosport) point out that Black could have still won by 37... P-Q7 (ch).

The snag is, however, that after 36... R x P, White can force a draw by perpetual check by playing 37, Q-Q5 (ch), and so it seems that the most that Black could have got out of it after his oversight on move 35 was a Draw.

The solution to last week's problem by P. M. Collins was K-N2. We have a problem this week sent in by a Southsea reader. Although very simple, we must remember that not all our readers are expert solvers. It may also act as a warning to our younger and more impetuous players.

Finally, Mr. R. Busby of Buckland, asks whether readers have heard of the shortest game on record, which he describes as "the Chinaman's Folly" — White to play from the initial position and lose in two moves.



WHITE TO MOVE, AND MATE IN TWO.

Chess Notes

PORTSMOUTH TO FIELD STRONG TEAM

THE Portsmouth and District League are fielding a strong team in the 20 board match against Southampton League, which is due to be played at Southsea Youth and Community Centre on Saturday, 19th November (3 p.m. start).

Now that Portsmouth Schoolboys are challenging Southampton's claim to be the stronghold of Hampshire Chess, the senior players are determined to win this annual match for the first time for several years.

There should be some keen and interesting chess on view and spectators will be welcome.

The Portsmouth League team will be chosen from the following players: M. J. Dymond (Portsmouth), P. Cartmell (Fareham), G. Richardson (Cosham), Dr. B. G. Wells (Portsmouth), H. C. Bailey (Portsmouth), Lt. B. K. Butler (Portsmouth), D. M. Heywood (Portsmouth), F. Johnson (Fareham), A. S. La Lond (Fareham), W. Makar (Portsmouth), S. C. Noke (Cosham), J. P. Price (Portsmouth), L. West (Portsmouth Community Centre), R. W. Davis (Portsmouth Community Centre), W. J. Eaton (Gosport), E. Taylor (Gosport), A. F. Brameld (Gosport), P. M. Collins (Portsmouth Grammar School), A. J. Evans (Fareham), T. E. Hollington (Cosham), A. D. Crossin (Cosham).

HAMPSHIRE LEAGUE

An adjudicated draw on board 5 gave Fareham a narrow (and a trifle lucky) win against the Young Pompeians.

Scores: Young Pompeians 2, Fareham 3 (G. L. Comben 0, N. C. Taylor 1; P. M. Collins 0, P. Cartmell 1; A. F. Brameld ½, F. Johnson ½; M. March 1, A. S. La Lond 0; C. J. Campion ½, J. Grant ½).

Hampshire has entered two teams this season in the County and District Correspondence Chess Championship. The following 32 local players are taking part:-

Hants I: Bd. 9 A. S. La Lond (Fareham), Bd. 14 J. P. Price (Portsmouth), Bd. 16 H. C. Bailey (Portsmouth), Bd. 17 L. West (Comm. Ctr.), Bd. 21 Dr. B. G. Wells (Portsmouth), Bd. 22 D. M. Heywood (Portsmouth), Bd. 24 G. W. Farmer (Fareham), Bd. 25 A. F. Brameld (Gosport), Bd. 26 S. C. Noke (Cosham), Bd. 27 T. E. Hollington (Cosham), Bd. 28 W. Makar (Portsmouth), Bd. 29 A. D. Crossin (Cosham), Bd. 30 J. E. C. Grant (Fareham).

Hants II: Bd. 2 G. W. S. Goggin (Fareham), Bd. 3 A. F. Garner (Fareham), Bd. 4 A. R. Cooper (Southsea), Bd. 6 E. G. Potter (Fareham), Bd. 7 A. Bacon (Portsmouth), Bd. 11 H. R. Moir (Fareham), Bd. 12 C. W. Brading (Fareham), Bd. 14 R. Tyack (Fareham), Bd. 15 H. C. Smith (Cosham), Bd. 16 J. E. Smith (Portsmouth), Bd. 18 B. Keen (Fareham), Bd. 21 J. H. Jones (Gosport), Bd. 22 R. L. Paige (Cosham), Bd. 25 F. Gay

(Fareham), Bd. 26 W. Rose (Cosham), Bd. 27 D. A. Bloxson (Fareham), Bd. 28 J. Canty (Portsmouth), Bd. 29 S. Shepherd (De Havillands), Bd. 30 R. Ralls (De Havillands).

SCHOOLS TOURNAMENT

Portsmouth Grammar School were knocked out of the National Schools Tournament in the second round by Hove Grammar School by 1 game to 5, the scores of the local team being P. M. Collins ½, A. Fulton 0, T. Moore 0, D. Watkins 0, I. Mansell ½, J. Huins 0.

A record entry of 358 teams are taking part in this year's competition. With six to a team plus essential reserves, this must mean that 3,000 girls and boys are participating in this increasingly popular contest.

PORTSMOUTH LEAGUE

There have been comparatively few results during the past week. De Havillands lost heavily to a very strong Portsmouth "B" team and both Fareham "C" and St John's "B" won their matches in the newly formed Third Division.

Scores:

SENIOR SECTION

Division 2

De Havillands "A" 0, Portsmouth "B" 5 (B. Smith 0, M. March 1, L. Langley 0, W. Makar 1; S. Shepherd 0, C. J. Campion 1; R. Moody 0, J. P. Price 1; R. Ralls 0, A. Bacon 1).

Division 3

Gosport "B" 1½, St John's "B" 3½ (J. Hardcastle ½, A. Clark ½; H. J. Taylor 0, C. Moore 1; R. Clark ½, P. Müller ½; P. Bennett ½, A. Lakin ½; Mrs. L. Clear 0, B. Davis 1), Fareham "C" 4, Portsmouth "C" 1 (R. Tyack 0, J. E. Smith 1; D. A. Bloxson 1, B. J. Press 0; B. Keen 1, E. Woods 0; F. Gay 1, J. Canty 0; T. H. Bayliss 1, default 0).

Tables for the Senior Section will be printed next week.

ADJUDICATOR'S DEATH

Every Chess player in the Portsmouth area will by now have heard with deep regret of the recent death of the League's Honorary Adjudicator, Mr. Hubert A. Way.

He will be sadly missed amongst both local and county chess associations.

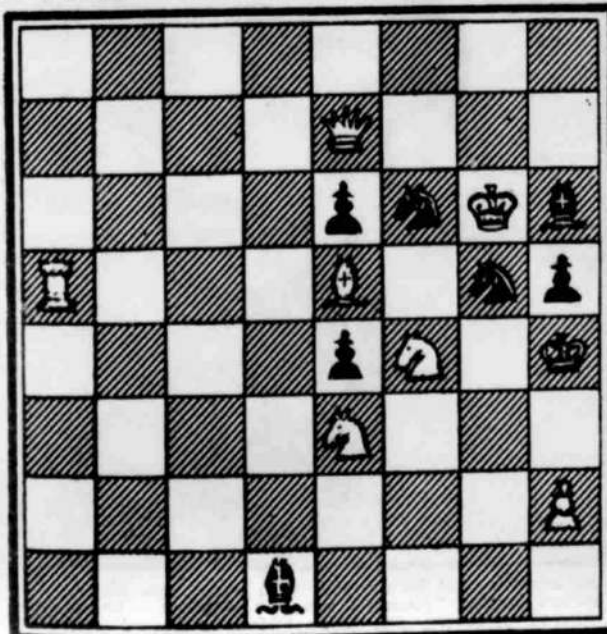
Mr. W. H. Pratten has consented to carry on this essential job for the rest of the season.

CHESS PROBLEM

The solution to last week's diagrammed problem was, of course, P-N8 (R). Not every chess player is aware that a pawn can be promoted to any piece.

That "shortest game on record" goes: 1, P-KB3 P-K3, 2, P-KN4-R5 mate.

This week we have an original "Two mover" composed by Dr. A. J. Pointon, of Portsmouth Chess Club.



WHITE TO MOVE, AND MATE IN TWO.

see the motor-cyclist, probably because of a bend in the road.

Chess Notes

HAMPSHIRE WINS IN "FRIENDLY"

HAMPSHIRE beat Dorset by 18 games to 11 in a friendly match held at Bournemouth. Four local players took part and collected 2½ points between them.

Full scores (Hampshire names first):

1. M. Thompson ½, S. J. Leigh ½;
2. D. K. Bevis 1, S. B. Baker 0;
3. S. L. Russell ½, L. Wotherspoon ½;
4. G. L. Pritchard 0, H. J. Collins 1;
5. E. W. Chandler 1, D. D. Marples 0;
6. L. E. Vine ½, D. O'D. Newbery ½;
7. R. D. Harding 0, L. Hutchinson 1;
8. F. R. Carter ½, S. Trethewey ½;
9. A. F. BRAMELD (Gosport) 1, F. Normington 0; 10. F. S. Scanes 1, R. Errington 0; 11. M. Jarvis 1, L. G. High 0; 12. P. M. COLLINS (Portsmouth Grammar School) 0, J. Welsh 1;
13. S. H. C. Lucas ½, G. Nash ½;
14. G. H. Baverstock ½, H. Hurrell ½;
15. P. J. CARTMELL (Fareham) ½, R. Owen ½; 16. M. D. Thompson 0, F. J. Samuel 1; 17. L. Pretty 1, R. A. C. Marples 0; 18. E. Engert 1, R. Scarlett 0; 19. D. Savage ½, G. W. Billingham ½; 20. E. W. Seagroatt 1, D. Crages 0; 21. J. H. JONES (Gosport) 1, J. C. Sherman 0; 22. R. T. Pink 1, F. C. Kingdon 0; 23. W. G. Poulton 1, J. R. Webber 0; 24. R. Puttock 1, J. Lister 0; 25. F. Pragnell 0, R. B. Dennis 1; 26. C. B. Orton 1, A. Williams 0; 27. G. Machon 1, E. C. Hutchinson 0; 28. P. K. S. Robinson 0, J. E. Rothery 1; 29. M. E. Ventham 0, H. C. Rothery 1.

Fareham beat Cosham in the Hants. League match and are therefore doing nicely with two wins from two rounds. Apparently, however, the first win is still a little uncertain as an appeal has been lodged against the Adjudicator's decision.

- Scores: Cosham 1½, Fareham 3½; (G. Richardson 0, W. H. Pratten 1; T. E. Hollington 0, T. De Buriatte 1; S. C. Noke 0, P. Cartmell 1; C. F. Way ½, A. S. La Lond ½; R. L. Paige 1, F. Johnson 0).

In the first round of the Hampshire Individual Championship, results were as under:

- Russel 1, Valler 0; West 0, Smith 1; Brameld 0, Vine 1; Wells 1, Harding 0; Bevis 0, Barton 1; Henshaw 0, Edmonds 1; Hocking 1, Hollington 0; Marshall 0, Thompson 1.

PORTSMOUTH LEAGUE

With two rounds completed, Cosham 'A', Portsmouth 'B' and Fareham 'C' lead the three tables in the Senior Section of the Portsmouth and District League.

All chess players will be pleased to see Mr. Alan Hayes's name appearing in Community Centre's team. He did not play last season, and is too good a player to stay outside competitive chess.

RESULTS

Senior Section, Division 1: Cosham 'A' 4, Community Centre 1. (G.

Richardson 1, R. Carter 0; T. Hollington 0, A. Hayes 1; S. C. Noke 1, S. F. Adams 0; C. F. Way 1, L. West 0; R. L. Paige 1, R. I. Ross 0).

Division 2: Cosham 'A' 1, Gosport 'A' 4. (R. P. L. Pett 0, J. H. Jones 1; H. C. Smith 1, A. D. Dosselt 0; M. Leggett 0, G. Mellows 1; B. Outer 0, J. Hardcastle 1; J. Hodgkinson 0, H. J. Taylor 1).

Fareham 'B' 3, St Johns (A) 2. (R. Tyack 0, P. Pemberton-James 1; C. Brading 1, D. Peninton-Bird 0; R. Hughes 1, K. Harrison 0; B. Keen 1, A. Clark 0; A. F. Garner 0, C. Dawes 1).

Division 3: Cyanamid 'B' ½, De Havilland 'B' 4½. (P. Halder 0, S. Harris 1; C. Mills 0, B. Davis 1; A. Hollingdale 1, K. Lawrence 1; A. Yarrow 0, R. Feasey 1; T. Thomas ½, J. Simmons ½).

TABLES

SENIOR SECTION

DIVISION 1

	P	W	D	G	P
Cosham 'A'	2	2	0	7½	2
R.N.P.L.	2	1	1	6	1½
Fareham 'A'	2	1	1	5½	1½
Portsmouth 'A'	2	1	0	4½	1
Community Centre	2	0	0	2	0
Portsmouth Gram. 'A'	2	0	0	1½	0

DIVISION 2

	P	W	D	G	P
Portsmouth 'B'	2	2	0	8½	2
Gosport 'A'	2	2	0	8	2
St John 'A'	2	1	0	5	1
Fareham 'B'	2	1	0	4½	1
Cyanamid 'A'	1	0	0	2	0
Cosham 'B'	1	0	0	1	0
De Havilland 'A'	2	0	0	1	0

DIVISION 3

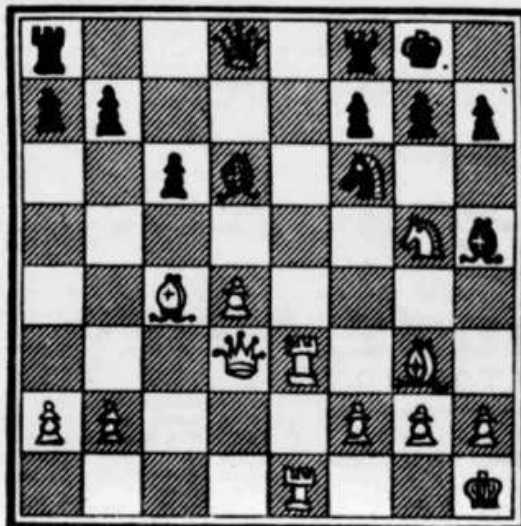
	P	W	D	G	P
Fareham 'C'	2	2	0	8	2
Gosport 'B'	2	1	0	6½	1
De Havilland 'B'	2	1	0	4½	1
St John 'B'	2	1	0	4½	1
Portsmouth 'C'	2	1	0	4	1
Cyanamid 'B'	2	0	0	2½	0

CHESS PROBLEM

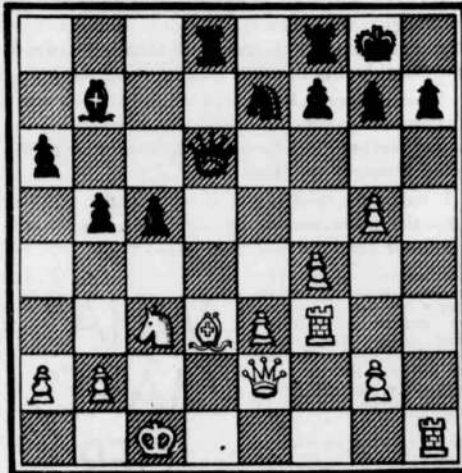
The key move to last week's problem by Dr. A. J. Pointon was B-B3. This week we have a position submitted by Mr. M. March (Portsmouth Chess Club). He describes it as being based on an idea by Bondarevsky and considers it outstanding in its imaginative combination.

Instead of holding over the solution until next week, the moves are set out below, and readers are invited to find any flaws in the analysis:

1. B x B Q x B (if 1. ... B-N 3?
2. Q-QR 3). 2. R-R 3 B-N 3 (if 2. ... B-N 5, 3. R x P or if 2. ... P-KN 3 3. P-B 3). 3. Q x B!
- RP x Q. 4. B x P (ch)! R x B.
5. R-R 8 (ch)! K x R. 6. N x R (ch) K moves. 7. N x Q, and white is a pawn up with a won end-game.



Chess Notes



PROBLEM—This week we have a position which occurred some years ago in a game, and which has been recalled and submitted by Mr. H. R. Moir, of Portchester — White to move, and mate in seven moves.

Portsmouth League Beat Southampton

THE representative team drawn from local clubs proved to be stronger than the best 20 that could be produced from the Southampton area, and Portsmouth and District League emerged victorious in their recent match against Southampton League by 12½ games to 7½.

This was the Portsmouth League's first win in this keenly contested annual event for seven years and is a further indication of the growing interest and skill amongst local players.

Probably the most meritorious performance of the day was the win by R. L. Paige on board 4. Full scores (Portsmouth players first named).—

1. G. Richardson (Cosham) 8, M. Thompson 1; 2. Dr. A. J. Pointon (Portsmouth) ½, L. E. Walters ½; 3. T. de Bariatte (Fareham) 0, A. C. Barton 1; 4. R. L. Paige (Cosham) 1, P. L. Marshall 0; 5. Lieut. D. K. Butler (Portsmouth) 1, L. E. Vine 0; 6. P. Cartmell (Fareham) 1, G. L. Pritchard 0; 7. A. S. La Lond (Fareham) 1, T. Cipek 0; 8. Dr. B. G. Wells (Portsmouth) 0, C. Newbury 1; 9. S. C. Noke (Cosham) ½, C. Harding ½; 10. S. F. Adams (Community Centre) 0, G. Baverstock 1; 11. L. West (Community Centre) 1, E. W. Engert 0; 12. A. F. Brameid (Gosport) 1, H. G. Dell 0; 13. W. J. Eaton (Gosport) ½, M. D. Thompson ½; 14. D. M. Heywood (Portsmouth) 0, D. Savage 1; 15. J. P. Price (Portsmouth) 1, J. M. Popiel 0; 16. E. Taylor (Gosport) 1, H. Thornton 0; 17. P. M. Collins (Portsmouth Grammar) 1, D. Saunders 0; 18. J. E. Hollington (Cosham) 0, Miss Gillian Moore 1; 19. W. Makar (Portsmouth) 1, R. G. Taylor 0; 20. J. H. Jones (Gosport) 1, K. Robinson 0.

PORTSMOUTH LEAGUE

With three more matches played in the First Division of the Portsmouth League Senior Section, Cosham Chess Club's team has increased its lead to one clear match point.

Fareham 'A' perhaps treated their youthful opponents too lightly in fielding a weakened team but all credit to Portsmouth Grammar School for seizing their opportunity. Having now dropped 1½ points in three matches, Fareham may well find that this defeat has cost them their newly-won Championship title.

In the School's Section, Purbrook are still without a win but came very near one in their match against Portchester Modern.

Tables for this section will be published as soon as possible, but this is not really practical at the moment, as six teams have not yet played a match.

RESULTS

Senior Section
Division I—Portsmouth Grammar 'A' 2½, Fareham 'A' 1½, (J. F. Watson ½, P. Cartmell ½; P. M. Collins 1, A. S. La Lond 0; A. Fulton 1, default 0; D. Watkins 1, J. Grant 0; I. Mansell 0, A. F. Garner 1).
 Portsmouth Centre ½, (Dr. A. J. Pointon 1, A. Hayes 0, Dr. B. D. Wells ½, L. West ½; Lieut. B. K. Butler 0, S. F. Adams 1; W. Makar 1, default 0; D. M. Heywood 1, M. James 0).
 R.N.P.L. 1½, Cosham 'A' 2½, (W. Eaton ½, Richardson ½; A. F. Brameid 1, T. Richardson 0; P. J. Cotson 0, S. C. Noke 1; H. W. Tripp 0, C. F. Way 1; E. Taylor 0, A. D. Crossin 1).
Division I (Section 'A')—Purbrook Park 'A' 0, St John's 'C' 5 (A. Leadbetter 0, P. Pemberton-James 1; S. Rook 0, D. Peniston-Bird 1; R. Warren 0, C. Thomas 1; D. Thomas 0, R. Harrison 1; K. Firth 0, P. Miller 1).
Division I (Section 'B')—Portchester Modern 3, Purbrook Park 'B' 2, (A. Jones 0, A. Renouf 1; D. Coates 1, N. Walker 0; W. Wallen 1, J. Wilson 0; N. Tindal 0, D. Nicholson 1; D. Murgidge 1, C. Marsh 0).
Purbrook Park 'B'—Technical High 'A' 5, (G. Marsh 0, I. R. Hill 1; B. Hirst 0, E. G. Gander 1; D. Nicholson 0, G. E. Arnold 1; N. Walker 0, M. Poling 1; A. Renouf 0, R. Tringham 1).

Purbrook Park 'B' 0, St John's 'D' 5, (A. Renouf 0, A. Clark 1; B. Hirst 0, C. Moore 1; S. Walker 0, C. Dawes 1; G. Marsh 0, B. Davis 1; J. Wilson 0, L. Gallaway 1).
Division II—Purbrook Park 'C' 0, St John's 'E' 3 (D. Nicholson 0, C. Bicheno 1; R. Francis 0, J. Hawkins 1; M. Grant 0, R. Slavert 1; A. Jarvis 0, D. Johnson 1; D. Ellis 0, S. Keeley 1).

TABLES SENIOR SECTION

Division	P	W	D	G	P
Division I					
Cosham 'A'	3	3	0	11	3
Portsmouth 'A'	2	2	0	10	2
R.N.P.L.	3	1	1	7½	1½
Fareham 'A'	3	1	1	7	1½
Port Grammar 'A'	2	1	1	5	1
Comm. Centre	3	0	0	4½	0
Division II					
Portsmouth 'B'	2	2	0	8½	2
Gosport 'A'	2	2	0	8	2
St John's 'A'	2	1	0	5	1
Fareham 'B'	2	1	0	5	1
Cyanamid 'B'	2	0	0	2½	0
Cosham 'B'	1	0	0	1	0
De Havillands 'A'	2	0	0	1	0
Division III					
Fareham 'C'	2	0	0	2	
Gosport 'B'	2	1	0	6½	1
De Havillands 'B'	2	1	0	4½	1
St John's 'B'	2	1	0	4½	1
Portsmouth 'C'	2	1	0	1	1
Cyanamid 'B'	2	0	0	2½	1

First round results in the local Individual Championship were:—Grant 9, Comben 1; Wells 1, Heywood 0; Smith (J.) 0, Watson 1; Collins 1, La Lond 0; Pointon 1, Taylor 0; Jones 0, Adams 1; March 0, Richardson 1; Evans 1, Brameid 0; Potter 0, Crossin 1; West 1, Lee 0; Haddington 1, Moir 0; Farmer 1, Blaxton 0; Davis 0, Paige 1; Price 1, Smith (H.) 0.

HAMPSHIRE LEAGUE

Woolston lost their first match of the season by a narrow margin after 3 games had gone to the Adjudicator. Details:—Woolston 2, Southampton 3. (M. Thompson 0, J. Fuller ½; M. E. Ventham 0, J. Rawley ½; A. Edmonds 1, G. L. Pritchard 0; R. S. Learmonth 0, H. L. Parsons 1; T. Cipek 0, A. C. Barton 1).

TABLE

	P	W	D	G	P
Fareham	2	2	0	6½	2
Young Pompeians	2	1	0	4	1
Southampton	2	1	0	3	1
Bournemouth	2	1	0	4	1
Woolston	1	0	0	2	0
Salisbury	1	0	0	2	0
Cosham	1	0	0	1½	0
Portsmouth	0	0	0	0	0

In the Hants Ladies Championship Tournament scores are:—Miss Elliott 1, Miss Moore 0; Miss Elliott 0, Miss Moore 1; Mrs. Pond 1, Miss Moore 0. The next County Match is against Sussex on 30 boards and is due to be played at Bognor on Saturday, December 3.

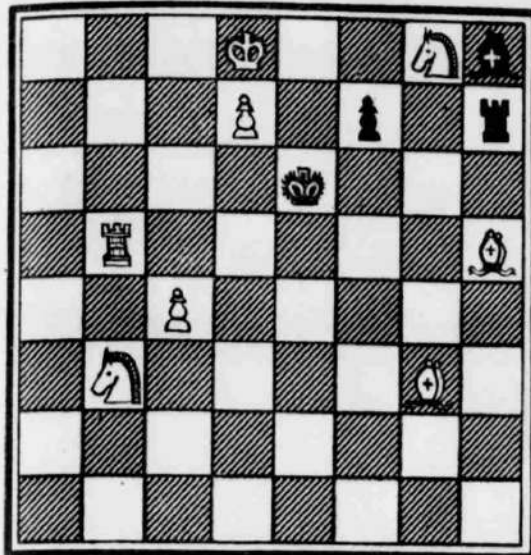
Lorry Driver Careless

A 50-year-old lorry driver, who has been driving almost all his working life, Mr. Ernest Frederick Silvester, of 7, Maylands Road, Bedhampton, was fined £10 by Chichester Magistrates yesterday for careless driving. He pleaded guilty.

Inspector J. Geal said defendant was overtaking on a bend, on the road from Chichester to Bognor Regis. A car coming in the opposite direction had to brake hard to avoid a collision.

In a statement defendant said he was overtaking an invalid carriage, but could see for 500 yards ahead. He saw the other car, but must have misjudged its speed.

Chess Notes



White to move and mate in two

Now St John's Moves into Fourth Round

The St John's College "A" team has won its way into the fourth round of the National Schools' Tournament, after disposing of Grove School, St Leonards. The College's "B" team was, however, knocked out by Bournemouth School in a match which was very close, with St John's apparently having most of the bad luck that was going.

For instance, No. 5 accepted a draw in a superior position early on, No. 2 let a draw slip from his grasp in the closing stages, and No. 4 was a pawn up at the end, which was just not enough to persuade the adjudicator to give a win—and St John's "B" needed only half a point more to win the match.

SCORES.—St John's "A" 5½, Grove School, St Leonards, ½. (P. Pemberton-James 1, A. Buckle 0; D. Peniston-Bird ½, D. Stevenson ½; C. Thomas 1, R. Midgeley 0, K. Harrison 1, R. Harmer 0; F. Aribarg 1, B. Beynon 0; A. Clark 1, B. Beaney 0.) St John's "B" 2½, Bournemouth School 3½. (C. Moore 0, J. Tullock 1; P. Miller 0, M. Jervis 1; A. Lakin ½, N. McCall ½; M. Rice ½, R. Fraser ½; C. Leake ½, P. Dedwell ½, B. O'Brien 1, J. Ellis 0.)

HAMPSHIRE LEAGUE.—Fareham Chess Club continued its successful run in the Hampshire League with a 4-1 win against Andover. Bournemouth secured a narrow victory against Southampton.

SCORES.—Fareham 4, Andover 1. (T. de Buriatte 1, C. H. Henshaw 0; S. L. Russell ½, P. J. Cartmell ½; J. M. Jarvis ½, A. S. La Lond ½; Miss M. Elliott 0, G. W. S. Goggin 1; I. Miles 0, J. Grant 1.)

Southampton 2, Bournemouth 3. (J. Valler 0, D. K. Bevis 1; D. A. Rawden ½, E. W. Chandler ½; G. I. Pritchard 0, S. H. C. Lucas 1; A. C. Barton 1, H. Pollard 0; D. A. Horn ½, C. B. Orton ½.)

PORTSMOUTH LEAGUE.—Portsmouth "B" have increased their lead in the second division of the Portsmouth League, while St John's "B" are challenging Fareham "C" for leadership of Division III.

There have been no schools matches to report this week.

RESULTS.—Senior Section, Division II: Portsmouth "B" 3, Cosham "B" 2. (M. March ½, R. L. Paige ½; W. Makar 1, H. C. Smith 0; J. P. Price 0, T. Hollington 1; J. E. Smith 1, M. Leggett 0; A. Bacon ½, J. Hodgkinson ½.)

Cynamid "A" 2, Fareham "B" 3. (N. H. J. Wood 1, E. G. Potter 0, Default 0, R. Tyack 1; A. Hollingdale 1, G. D. Ratter 0. — Davis 0, T. H. Bayliss 1; — Hooper 0, A. F. Garner 1.)

St John's "A" 2, De Havilland "A" 1. (P. Pemberton-James 1, H. Smith 0; D. Peniston-Bird 1, S. Shepherd 0; C. Thomas 0, L. Langley 1; K. Harrison 0, R. Moody 1; F. Aribarg 0, R. Ralls 1.)

Division III.—St John's "B" 4, Cynamid "B" 1. (A. Clark 1, C. Mills 0; C. Moore 1, — Smith 0, P. Miller 0, A. Yarrow 1; C. Dawes 1, default 0; B. Davis 1, — Brown 0.)

TABLES

Senior Section					
Division I					
	P	W	D	G	P
Cosham "A"	3	3	0	11	3
Portsmouth "A"	2	7	0	10	2
R.N.P.L.	2	1	0	7½	1½
Fareham "A"	3	1	1	7	1½
Port. Grammar "A"	3	1	0	5	1
Comm. Ctr.	3	0	0	4½	0
Division II					
	P	W	D	G	P
Portsmouth "B"	3	3	0	11½	3
Gosport "A"	2	2	0	8	2
Fareham "B"	3	2	0	7½	2
St John's "A"	3	1	0	7	1
De Havilland "A"	2	0	0	4	1
Cynamid "A"	2	0	0	4	0
Cosham "B"	2	0	0	3	0
Division III					
	P	W	D	G	P
Fareham "C"	2	2	0	8	2
St John's "B"	3	2	0	8½	2
Gosport "B"	2	1	0	8	1
De Havilland "B"	2	1	0	4½	1
Portsmouth "C"	2	1	0	4	1
Cynamid "B"	3	0	0	3½	0

NEW HEADQUARTERS.—Cosham Chess Club is again on the move and has set up new headquarters at Manor Court Modern School, Central Road, Drayton. Club nights will continue to be on Thursdays, as hitherto, and new members will be very welcome.

CHESS PROBLEM.—The solution to Mr. Moir's "seven-mover" last week was: 1. B x RP (ch), K-R1 2, B-N6 (dis. ch), K-N1 3, R-R5 (ch), K x R 4, R-R3 (ch), K-N1 5, R-R3 (ch), K x R 6, Q-R4 (ch), K-N1 7, Q-R7 (mate).

This week we have a "two-mover" specially composed for the Evening News by Mr. W. E. Caine, of Southsea. Although not known in local competitive chess circles, Mr. Caine is obviously a composer of some experience and he writes to say how much he appreciates the new feature of a weekly diagram.

UNIT TRUST PRICES

Allied.—Brit Ind Flex 1st 3/3½—5/7¼; 2nd 18/3½—19/6 sd; 3rd 20/3½—21/9½; 4th 20/3—21/9. Elect and Ind Dev 10/2½—11/7. Metals and Minerals 14/4½—15/3½.

Save and Prosper Group.—Cons B I T 10/3½—11/4 sd. Invest Trust 3/4½—5/10½. Trust Bank Units 8/—8/8½. Trust Bank Inv 2/6—3/11½. Trust Insurance 12/—12/10½. Scotbills 5/10½—6/4½. Scotshares 4/6½—4/11 sd. Crosby Capital 12/9½—13/6½. Crosby Income 4/9—5/7.

Commercial.—Commercial 23/7½—25/1½. Universal 2nd 44—46/4½. Domestic 3/11½—4/3¼ sd.

Selective Group.—Selective A 36/6—38/6. "B" 41/—43/7. "C" 21/9—22/9.

Moorgate.—Hundred 36/4½—38/4½. Investors General 21/1½—22/7½. Investors 2nd Gen 29/7½—31/3. Provident Invest 12/6—13/4½. Sec First 2nd Ser 12/6—13/4½.

Municipal and General.—M and G General 11/2½—11/10½. Second M and G 8/6½—9/1 sd. Mid Indust and Gen 9/2—9/8½.

National.—Century 38/6—40/7½. National Cons 27/4½—24/10½. National "D" 13/6—14/6 sd. Scotbills Trust 2nd 31/6—33/3. Bank Inv and Fin 10/3—11/7 sd.

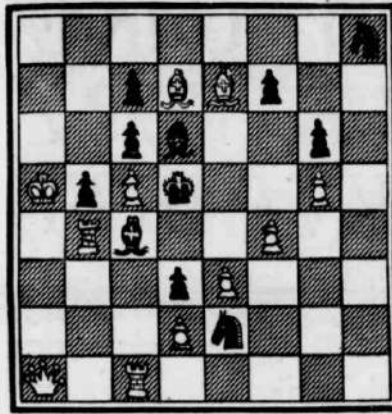
Commonwealth.—A.E.G. 13/9—14/6. Orthodox 13/7½—14/4½. Commonwealth 10/0½—10/9½.

First Provincial Group.—Reserves 12/0½—12/9½. "B" 29/1—30/5½.

Philip Hill Higginson.—B.S.I.T. 9/6—10/0½. B.S.T. 12/10½—13/7½ sd.

Dillon Walker.—Falcon 4/4—4/7 sd. Unicorn 6/0½—6/5½. Can Int Growth 7/2—7½/6.

Shield Fund Managers.—Shield 12/8½—13/6½. Unity 2/0½—2/0½.



White to move and mate in two.

HAMPSHIRE IN A CLOSE STRUGGLE

HAMPSHIRE did very much better in their match against Sussex than in the corresponding match last season. After a very close and exciting struggle at Bognor, the score at the close of play was: S.C.C.U. Championship, Hampshire 9, Sussex 10, with one game for adjudication (compared with 6½-13½ in 1959-60); and Amboyna Shield contest, Hampshire 25, Sussex 20, with five games for adjudication (compared with 13½-36½ in 1959-60).

Hampshire has the advantage on the unfinished game on Board 2, so may well draw the Championship match, while over the full 20 boards it is safe to say that Hampshire have won comfortably.

The local contingent numbered ten and obtained six wins, three losses with one unfinished.

Full scores (Hampshire names first):—

M. Thompson 1, A. Hall 0; M. E. Venham adj.; J. McLeod ½; Cnd; T. O. Road ½; B. Sinister 0; D. K. Revis 0; H. G. T. Matchett 1; L. C. Walters ½; B. Balfour ½; A. M. Edwards 1; T. Guy 1; T. E. Hollington (Cosham) 0; Rev. J. Bickertstaff 1; J. C. Barland 0; G. M. Norman 1; J. C. Barton 1; G. F. Ramsay 0; H. Ewans 1; M. J. Warner 0; D. A. Hazden 0; J. Simons 1; P. H. Marshall ½; L. Cannon ½; L. Henshaw 0; E. D. Ovenden 1; L. Vine ½; R. H. Rose ½; S. L. Russell 1; Rev. H. M. Blackett 0; H. L. Parsons 0; J. B. Carr 1; G. Richardson (Cosham) 0; E. A. Horn 1; S. B. Baker 1; R. Durrell 0; R. S. Learmouth 1; C. R. Clifton 0; C. C. Harding 0; A. T. Watson 0; A. F. Brameld (Gosport) 0; L. Lindbomer 1; B. D. Harding adj.; H. F. James adj.; E. R. Carter ½; A. G. Stubbs 0; J. Shepherd 1; N. Flabcock-Lomas 0; W. Makar (Portsmouth) 1; G. H. James 0; J. Jarvis 1; D. A. W. Hamilton 0; T. de Barlatte (Fareham) 1; L. Stephens 0; D. G. Croves ½; R. T. Mansfield ½; J. B. Parker ½; D. Ward ½; A. S. La Leod (Fareham) 1; N. Instone-Brewer 0; S. H. C. Lucas adj.; R. Utton adj.; D. J. Blackman ½; L. White 0; Yates & Dr. R. Smith 1; J. P. Price (Portsmouth) adj.; E. J. Bowley adj.; G. W. Kilminster 1; Mui 0; E. Balding 0; N. D. Thompson ½; L. F. Grasty 1; J. E. C. Grant (Fareham) 1; B. W. Young 0; G. A. Hollis 1; G. R. Bayerstock 0; Miss A. Gammans 1; Default 0; A. Backle 1; P. C. Pounce ½; P. M. Collins (Portsmouth Grammar) 1; P. Kettle 0; Miss Gillian Moore 1; F. W. Appleby 0; W. P. J. Munro 1; F. A. Streeter 0; J. H. Jones (Gosport) 1; Firman 0; D. Savage adj.; J. S. Chirgwin adj.; E. Egbert 0; Miss P. Renwick 1; F. Pradell 1; A. Müller 0; M. Holloway-Vine 0; R. Capideo 1.

Second round results in the County Individual Championship Tournament are:—

Thompson 1; Hocking 0; Edmonds 0; Russell 1; Smith 1; Wells 0; Vine 1; Barton 0; Hollington 0; Brameld 1; Harding ½; Henshaw ½; Marshall 1; Revis 0.

Hampshire League: Three local teams are at present proudly occupying the first three positions in the table, and Portsmouth and Fareham are the only teams without a date.

T. O. Road is back in the Southampton area and is again available to assist Woodston. At full strength, this team is a very formidable proposition and most will rate as the most likely to win the Championship this season.

Results:

Team	P	W	D	G	P
Fareham	2	3	0	10	2
Portsmouth	2	2	0	9	2
Young Pompeians	2	2	0	9	1
Bournemouth	2	2	0	7	1
Southampton	1	0	0	2	0
Woodston	1	0	0	2	0
Salisbury	1	0	0	1	0
Cosham	1	0	0	1	0
Andover	1	0	0	1	0

Portsmouth League: This season's new entrant, De Havilland, is more than holding its own in both the second and third divisions of the Portsmouth and District League. Most teams taking part for the first time find the opposition tougher than they expect, but it seems that this Works Club, propped by a number of friendly matches before the competition commenced.

RESULTS

Senior Section — Division 2.
De Havilland "A" 4, Cyanamid "A" 1 (B. Smith 1, B. Davis 0, L. Langley 0, N. H. J. Wood 1; R. Moody 1, Default 0; S. Shepherd 1; J. Thomas 1; R. R. C. Mills 0).
Cosham "B" 3½, St John's "A" 1½ (R. L. Paige 1, F. Pemberton-James 0, H. C. Smith 1, D. Peniston-Bird 0; M. Leggett 1, C. Thomas 1; R. P. L. Pett 1; K. Harrison ½; J. Hodgkinson 0, A. Clark 0).

Division 3.
Portsmouth "C" 2½, De Havilland (Default 0, S. Harris 1; J. E. Smith 1, B. Davies 0; B. Priest 1, E. Fealy 0; E. Canty 0, K. Lawrence 1; E. Woods ½, J. Simmons ½).

Division 1

Team	P	W	D	G	P
Cosham "A"	3	2	0	10	2
Portsmouth "A"	3	2	0	10	2
R.N.P.L.	3	1	1	7	10½
Fareham "A"	3	1	1	7	10½
P'mouth Gramm. "A"	3	1	0	5	1
Comm. Centre	3	0	0	4	5

Division 2

Team	P	W	D	G	P
Portsmouth "B"	3	2	0	10	2
Gosport "A"	2	2	0	8	2
Fareham "B"	2	2	0	7	2
De Havilland "A"	4	2	0	8	2
Cosham "B"	3	1	0	6	1
St John's "B"	3	1	0	5	1
Cyanamid "A"	3	0	0	5	0

Division 3

Team	P	W	D	G	P
Fareham "C"	2	2	0	8	2
St John's "C"	2	2	0	8	2
De Havilland "B"	3	1	1	7	10½
Portsmouth "C"	3	1	1	6	10½
Gosport "B"	3	1	0	6	1
Cyanamid "B"	3	0	0	3	0

Problem: The key move in last week's problem composed by Mr. W. E. Caine was 1 K-B7, with the threat of 2 P-QN3.

This week we have an original composition in the form of a speciality contributed by S. H. C. Lucas, Hon. Secretary of the Bournemouth Chess League.

Unit Trust Prices

Allied—Brit Ind Flex 1st 5/1½-5/2½; 2nd 15/-19/2½; ad. 3rd 20/2½-21/0½; 4th 20½-21½. Elect and Ind Dev 19/-19½; Metals and Minerals 18/2½-19/2½.

Save and Prosper Group—Cons. Brit 10/2½-11/1; ad. Invest Trust 3/2½-3/8½; Trust Bank Units 8/-8½; Trust Bank Inv 3/5-5/10½; Trust Insurance 11/8-12/8½; Scotbis 5/8-4/1; Scotshares 14/-14½; ad. Crosby Capital 12/7½-12/4½; Crosby Income 4/9-5/-.

Commercial—Commercial 23/4½-24/10½; Universal Ind 43/6-45/10½; Domestic 3/18½-4/2½; ad.

Selective Group—Selective "A" 26/-27/-; "B" 40/6-42/6; "C" 21/4½-22/4½.

Moorgate—Hundred 26/4½-27/4½; ad. General 20/10½-21/4½; Investors 2nd Gen 20/3-20/10½; Sec. Provident Invest 12/6-12/4½; Sec. First 2nd Ser 12/6-12/4½.

Municipal and General—M. and G. 11/-11/8; Second M. and G. 8/11 8/11½; ad. Mid Indust and Gen 8/11 8/2½; Century 28/4½-29/6.

National—National Cons 23/3-24/9; National "D" 12/3-12/7; ad. Scotian Trust 2nd 31/7½-32/10; Bank Inv and 2nd 3rd 19/10½-19/10; ad. 14/2½.

Commonwealth—AEG 23/10½-24/2½; Orthodox 13/9½-14/2½; Commonwealth 3/10½-3/16.

First Provincial Group—Reserves 11/11-12/8; "B" 25/10-26/2½; ad. Philip Hill Higginson—BSIT 9/9½-10/-; EST 12/10-13/7; ad.

Dilley Walker—Falcon 4/3½-4/6½; ad. Unicorn 5/11½-6/4½; Can Int Growth 71/7-75/11.

Shield Fund Managers—Shield 12/6-13/4½.

Community Units—Cupids 2/7½-2/11½.

British Life Office—British Life Unit 4/7-4/10.

DOLLAR MUTUAL FUNDS

Calvin Bullock—Bullock Fund 84/6-88/1½; Canadian Invest 61/10-64/9; Canadian Fund Inc 111/12-115/1½; Dividend Shares 29/8-21/1½.

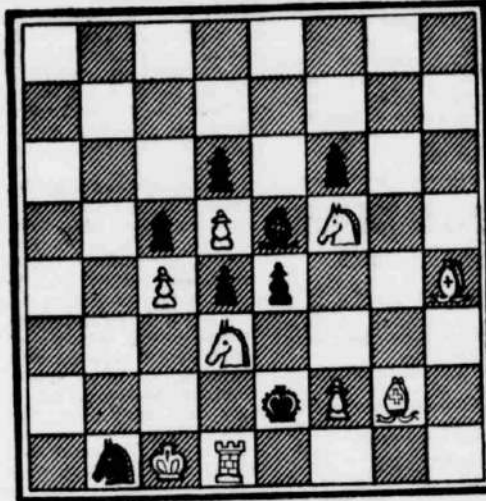
Keystone Fund Boston—Keystone of Canada 94/6-98/4.

Rbc Benson Londnie—Boston Fund 125-127½; Canada Gen 92/7½-96/-; Mass Inv 92/9-98/1½; Mass Growth 105/2-116/9.

T came Po me i Bre Ho alk wo got wit he firm hor onl by of an

Chess Notes

BLACK (EIGHT PIECES)



WHITE (NINE PIECES)
White to move, and mate in two.

SCHOOLS SECTION IS KEPT BUSY

THERE having been considerable activity in the Schools' Section of the Portsmouth and District League during the past week, it seems to be an opportune moment for reviewing the general situation amongst our local Schools teams.

St John's "C" and Prices "A" share the lead in Section "A" of the First Division and Technical High "A" tops Section "B". Technical High has, however, taken five matches to reach 3½ points and St John's "D" is well placed with two points from two matches.

In the under-15 section, St John's are again in the picture, with their "F" team gaining maximum game points from two matches.

Two good wins during the week were Purbrook "C" "white-washing" Gosport Grammar "C" and Fareham Secondary winning their first match of the season against Price's School.

In the Senior Section, there has been less excitement, but Cosham "A" go on quietly building up their Championship chances.

Cyanamid are withdrawing one of their two teams from the Portsmouth League owing to shortage of players. Their "A" team will therefore drop out of Division 2 and their other team will continue in Division 3 under their existing title.

RESULTS

Senior Section, Division 1.—Cosham "A" 4½; Portsmouth Grammar "A" ½; (G. Richardson ½, P. M. Collins ½; T. Hollington 1, D. Watkins 0; S. C. Noke 1, T. Moore 0; C. F. Way 1, A. Fulton 0, A. D. Crossin 1, I. Mansell 0)

Division 2.—Fareham "B" 4; De Havillands "A" 1; (A. J. Evans 1, L. Langley 0; G. W. Farmer 0, B. Smith 1; J. Grant 1, R. Moody 0; G. D. Ratter 1, S. Shepherd 0; D. A. Blosom 1, G. Arbothnot 0)

Division 3.—Gosport "B" 2½; Portsmouth "C" 2½; (W. J. Eaton 1, Default 0; H. W. Tripo 1, Default 0; M. Johnson 0, P. Chadwick 1, P. Bennett 0, E. Woods 1; Mrs. L. Clear ½, E. J. Canty ½)

Schools' Section—Division 1, Sect. "A" 1.—Gosport Grammar "A" 3; Purbrook "A" 2; (R. Jones 1, A. Leadbetter 0; Default 0, S. Rook 1; M. Carter 0, R. Warren 1; I. Marriot 1, D. Thomas 0, G. Williams 1, B. Hirst 0)

Division 1 (Sect. "B") 1.—Gosport Grammar "B" 3; Purbrook "B" 2; (C. Pringle 1, G. Marsh 0; Stubbington 1, J. Wilson 0; Lowe 0, A. Renouf 1; A. Cocks 1, N. Walker 0; Lovell 0, D. Ellis 1)

Gosport Grammar "B" 2; Technical High "A" 3. (Detailed scores not available).

Division 2.—Gosport Grammar "C" 0; Purbrook "C" 5; (L. Stubbington 0, R. Francis 1; J. Harrington 0, D. Nicholson 1; P. Wood 0, M. Grant 1; G. White 0, R. Lintott 1; R. Moore 0, A. Jervis 1)

Prices "B" 2; Portsmouth Grammar "C" 3; (Dudson 1, Default 0, Crawford 1, Huins 0; Davies 0, Westbrook 1; Weston 0, Gorton 1; Jones 0, Mucklow 1)

Gosport Grammar "C" 2; Technica High "B" 3. (Detailed scores not available).

SCHOOLS' SECTION

DIVISION 1

Section "A"

	P	W	D	G	P
St John's "C"	1	1	0	5	1
Prices "A"	1	0	5	1	1
Gosport Gram. "A"	1	1	0	3	1
Purbrook "A"	3	0	0	2	0
P'Mouth Gram. "B"	0	0	0	0	0

Section "B"

	P	W	D	G	P
Technical High "A"	5	2	1	14½	2½
St John's "D"	2	2	0	10	2
Portchester Mod.	2	1	1	5½	1½
Gosport Gram. "B"	2	1	0	5	1
Purbrook "B"	5	0	0	5	0

DIVISION 2 (UNDER-15)

	P	W	D	G	P
St John's "F"	2	2	0	10	2
Technical High "B"	3	2	0	7	2
St John's "E"	1	1	0	3½	1
Fareham Secondary ..	1	0	0	1	1
P'mouth Gram. "C" ..	2	1	0	4½	1
Purbrook "C"	3	1	0	6	1
Prices "B"	2	0	0	4	0
Gosport Gram. "C" ..	2	0	0	2	0

For the edification of our readers, we submit details of two very brief games which occurred recently in local League play. The winners were P. Pemberton-James (St John's College, in game 1) and A. F. Brameld (Gosport) in game 2. The losers remain anonymous to spare their feelings.

Game 1. — 1. P-K4, P-K4; 2. N-KB3, N-QB3; 3. P-Q4, P x P; 4. B-QB4, B-B4; 5. 0-0, P-Q3; 6. P-B3, B-KN5; 7. B x P + ♗, K x B; 8. N-N5 +, Q x N; 9. Q-N3 +, B-K3; 10. Q x P, Q-N3; 11. Q x N, N-K2; 12. Resigns. (Because if White's Queen leaves the long diagonal mate follows — B-R6).

Game 2. — 1. P-Q4, P-Q4; 2. P-QB4, P x P; 3. N-KB3, N-KB3; 4. P-K3, N-B3; 5. B x P, P-K4; 6. 0-0, P-K5; 7. N-N5, N-Q4; 8. N x B, K x N; 9. Q-R5 +, R-Q1; 10. Q x N, Q-K2; 11. N-B3; B-B4; 12. P-KN4, R-Q1 ♗; 13. Q x B Mate.

FRIENDLY MATCH

The annual friendly match between Gosport Grammar School and Old Boys of the School resulted in a narrow win for the latter by three games to two.

Scores (School names first). — Bd. 1: G. Williams 0, A. F. Brameld 1; Bd. 2: R. M. Jones 1, D. Scorey 0; Bd. 3: C. Pringle 0, C. J. Campion 1; Bd. 4: M. Carter 1, R. S. Berryman 0; Bd. 5: R. Stubbington 0, Smith 1.

COUNTY CHESS

The results of the unfinished games in the recent match Hants v. Sussex were Bd. 1: M. E. Ventham 1, C. H. Stacey 0; Bd. 2: B. D. Harding ½, H. P. James ½; Bd. 3: H. C. Lucas 1, R. Upton 0; Bd. 4: J. P. Price (Portsmouth) 1, E. J. Bowley 0; Bd. 5: D. Savage 1, J. S. Chirgwin 0.

The final scores were therefore S.C.C.U. match Hants 10, Sussex 10 and Ambryna Shield Match Hants 29½, Sussex 29½. Altogether a very satisfactory performance.

Rather belatedly perhaps, the result of the unfinished game in the previous County match has just come through. Bd. 12: R. S. Learmouth ½, W. Quittner ½. The final score on this occasion was therefore Hants 12, Berkshire 8.

PROBLEM

The key move to Mr. Lucas's problem of last week was Q-B6.

This week we have the second original composition of the season from the Cosham Chess Club President, Mr. C. F. Way. Solution next week.