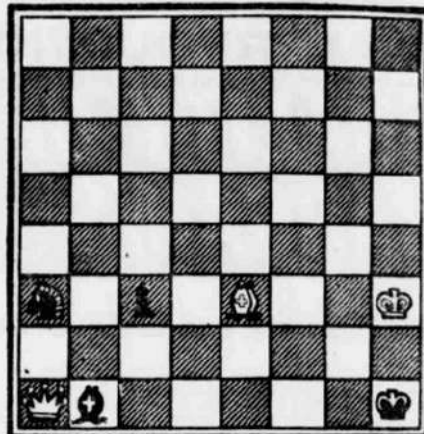


# Chess Notes

BLACK (FOUR PIECES)



WHITE (THREE PIECES)

White to move and mate in two.

WITH their top board still on holiday, another strong player at Hastings and yet another in bed with a cold, Cosham "A" were very much below strength when they met Fareham "A", and not unnaturally, were soundly beaten.

However, Cosham's first defeat of the season makes the championship issue more open and interesting.

### RESULTS

**Senior Section—Division 1.**  
Fareham "A" 3½, Cosham "A" 1½. (W. H. Pratten 1, T. Hollington 0; T. de Buriatte ½, S. C. Noke ½; P. J. Cartmell 1, R. P. L. Pett 0; A. S. La Lond 1, H. C. Smita 0; F. Johnson 0, A. D. Crossin 1).

#### TABLES (Senior Section only)

Division 1	P	W	D	G	P
Cosham "A"	5	4	0	17	4
Portsmouth "A"	4	3	0	12½	3
Fareham "A"	5	2	1	12	2½
R.N.P.L.	4	1	2	10	2
Portsmouth Gram "A"	4	1	0	2½	1
Comm. Centre	4	0	1	7	½

Division 2	P	W	D	G	P
Portsmouth "B"	4	4	0	13	4
Gosport "A"	3	3	0	11½	3
Fareham "B"	4	3	0	12½	3
Cosham "B"	4	1	0	6½	1
De Havilland "A"	4	1	0	5	1
St John's "A"	5	0	0	8½	0

Division 3	P	W	D	G	P
St John's "B"	4	3	0	12	3
Fareham "C"	3	2	1	10½	2½
Gosport "B"	4	1	2	11½	2
Portsmouth "C"	4	1	5	2	
De Havilland "B"	4	1	1	7½	1½
Cyanamid "B"	3	0	0	2½	0

Results so far received in the Portsmouth and District Individual Championship are: Jones 1, Brameld 0; Grant 0, Heywood 1; Smith (H.) 1, Moor 0, Lee 1, Davis 0 (def.); Hollington 1, Farmer 0; Price 0, Adams 1; March 1, Blossom 0; Collins ½, Watson ½.

### HAMPSHIRE LEAGUE

Woolston have at last struck winning form and secured a convincing win against Salisbury.

The detailed scores of this match, together with those of the Southampton v. Andover match (not previously available) are given below—

Salisbury 1½, Woolston 3½. (W. R. Bale 0, M. Thompson 1; F. S. Scanes 1, G. Daw 0; W. W. Watson 0, R. S. Learmouth 1; P. K. Butler 0, D. Drew 1; J. D. Herring ½, H. G. Dell ½).  
Southampton 2, Andover 2. (J. Valler 1, S. L. Russell 0, G. L. Frithard 0, M. C. Jarvis 1; P. L. Marshall 1, J. D. Bartley 0, A. C. Barton 1, G. D. Young 0; G. D. Harding 0, M. M. Carr 1).

#### TABLE

	P	W	D	G	P
Fareham	4	3	0	12	3
Bournemouth	4	3	0	10	3
Portsmouth	5	2	0	10	2
Young Pompeians	3	2	0	9½	2
Southampton	2	2	0	2	
Andover	3	1	0	6½	1
Woolston	4	1	0	8½	1
Salisbury	4	1	0	5	1
Cosham	4	1	0	7½	1

In the County Individual Championship, further third round results are, Brameld 1, Wells 0; Hershaw 1, Valler 0; West 0, Harding 1; Bevis 0 (def.), Hollington 1.

### GRADING LIST

Twelve Hampshire players are included in the Southern Counties Union Grading Lists for 1946, which have just been issued. Figures in brackets represent last year's gradings.

- W. H. Pratten (Fareham) 2b (4a).
- D. J. McCue (Farnborough) 4a —
- M. E. Venham (Woolston) 4b (4b).
- M. Thompson (Woolston) 5a (5a).
- I. E. Vime (Eastleigh) 5a —
- D. K. Bevis (Bournemouth) 5b —
- E. W. Chandler (Bournemouth) 5b —
- G. Daw (Woolton) 5b (5b).
- A. C. Barton (Southampton) 6a (5b).
- A. M. Edmunds (Woolton) 6a (5b).
- C. H. Henshaw (Eastleigh) 6a —
- R. S. Learmouth (Woolton) 6a —

### PROBLEM

The key move in the "Bristol" 3-mover published last week was 1. R-R1. Readers will then no doubt see that the moves 1. ... Q-Q2, 2. Q-N1, B-N4, 3. Q-N1 (mate) naturally follow.

This week we have an interesting miniature, the second problem specially composed for the Evening News by Mr. W. E. Caine of Southsea.