

Chess Notes

PORTSMOUTH 'A' TO GO ALL OUT FOR TITLE

SCHOOLS' SECTION

DIVISION 1 (SECTION A)

	P	W	D	G	P
Prices "A"	3	2	1	10½	2½
St John's "C"	3	2	1	10½	2½
Gosport Gramm "A"	1	1	0	3	1
P'mouth Gramm "B"	3	1	0	8	1
Purbrook "A"	4	0	0	3	0

DIVISION 1 (SECTION B)

	P	W	D	G	P
St John's "D"	4	4	0	17	4
Tech. High "A"	5	3	1	14½	3½
Portchester Mod.	5	2	1	11½	2½
Gosport Gramm "B"	2	1	0	5	1
Purbrook "B"	6	0	0	7	0

DIVISION 2

	P	W	D	G	P
St John's "F"	3	3	0	15	3
St John's "E"	2	2	0	8½	2
Tech. High "B"	3	2	0	7	2
P'mouth Gramm "C"	2	1	0	4½	1
Purbrook "C"	3	1	0	6	1
Fareham Sec.	2	1	0	3	1
Prices "B"	3	0	0	4	0
Gosport Gramm "C"	2	0	0	2	0

HAMPSHIRE LEAGUE

Cosham brought off a very satisfactory win against the composite Bournemouth team. The interesting feature of this competition is that our district can field no less than four teams, all able to more than hold their own against some very strong opposition.

Scores: Cosham 3½, Bournemouth 1½; (G. Richardson 0, D. K. Bevis 1; R. L. Paige 1, E. W. Chandler 0; T. E. Hollington 1, S. H. C. Lucas 0; A. D. Crossin ½, H. Pollard ½; H. C. Smith 1, A. Pike 0).

TABLE

	P	W	D	G	P
Fareham	5	4	0	15½	4
Portsmouth	4	3	0	15	3
Bournemouth	5	3	0	11½	3
Young Pompeians	4	2	1	12	2½
Southampton	5	2	1	12	2½
Salisbury	5	2	0	12½	2
Cosham	5	2	0	11	1
Woolston	4	1	0	8½	1
Andover	5	1	0	7	1

National Schools Tournament. — The joy of Bournemouth School was short-lived following their narrow win against St John's College, Southsea, in the National Schools Tournament. They met Hove Grammar School in the Zone Final and were beaten by the decisive margin of 1½-4½.

Community Centre Chess. — The match Woolston Community Centre v. Gosport Community Centre (Gosport Chess Club) resulted in a praiseworthy win by our local team. This match was part of the annual competition organized by the Hants. Federation of Community Centres.

Scores. — Woolston "A" 1½, Gosport 3½; (G. Daw 0, A. F. Brameld 1;

A. M. Edmonds 1, W. J. Eaton 0; M. D. Thompson 0, J. H. Jones 1; H. G. Dell 0, J. Hardcastle 1; N. Busk ½, E. Taylor ½).

COUNTY CHESS

Sussex beat Kent in both the S.C.C.U. Championship match (score 13½-6½) and in the Amboyna Shield match (score 27½-22½). This fixture took place last month, but the final scores were held up pending the results of a number of adjudications.

Hampshire's next match is due to be played in London on Saturday, February 13 (50 boards v. Kent).

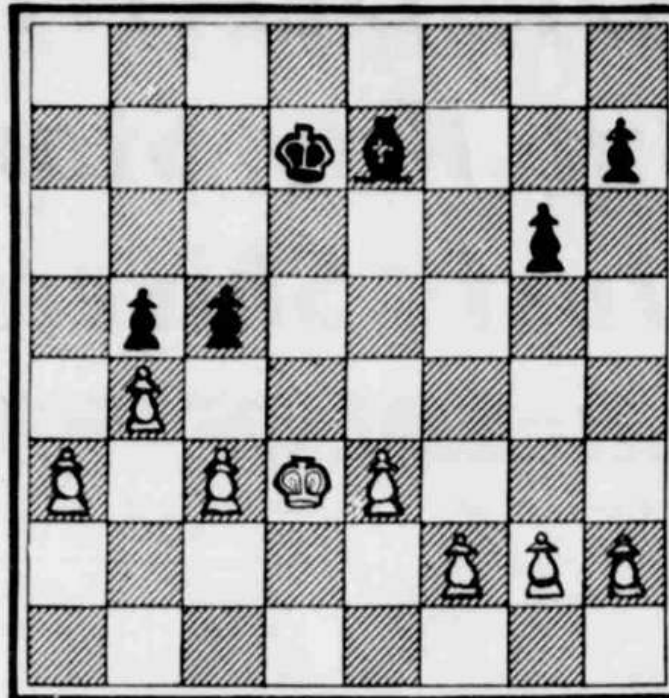
The remaining 4th round results in the Hampshire Individual Championship were Vine ½, Thompson ½, and Marshall 0, Henshaw 1.

The position now is that L. E. Vine (Eastleigh) shares the lead with M. Thompson (Woolston) — 3½ points each. S. L. Russell (Broughton) and A. M. Edmonds (Woolston) share second place with three points each.

PROBLEM

The key move in last week's problem by Mr. C. F. Way was K-R7 (Change mate Black).
Being by now rather short of

Black (six pieces)



White (eight pieces)

original Problem material, the diagram this week shows the position of a game which went for adjudication this season.

The following notes are by the League Adjudicator and show not only how the minds of these invaluable officials work, but also that their decisions are not lightly given.

Decision. — Black wins.
Analysis. — 1... P-B5 + 2 K-Q2 (He must go back, else Black wins at once) e.g. 2 K-Q4 K-Q3 followed by 3... B-B3 2... K-K3 3 P-B3

(The Black King must be kept his K5, or indeed of getting at the White pawns at all) 3... (Forcing a weakening Pawn Now, if 3... P-R3 (or R4) the g3 is open (by B-N6 at once if 3... or by K-B4, K-N4, KN5 and etc. if P-R3). Alternatively, P-N3, then 3... P-N4, 4... B-K4; 5... K-Q2, P-R4; 6... P-R5; 7... P x P, P x P; 8... K-B3; and by invading the squares on White's Kingside wins easily.