

# Chess Notes

## FAREHAM STILL TOP OF TABLE

FAREHAM'S chances in the Hampshire League suffered a set-back when they lost against Salisbury. Nevertheless, they are still top of the table, as they retain a narrow lead over Bournemouth on game average.

The fact that Andover beat Woolston has already been reported, but the final score following the result of the Adjudication of board 4 is shown below.

### SCORES.—

Fareham 1½, Salisbury 3½.  
(T. de Buriatte 0, W. R. Bales 1; P. J. Cartmell 1, F. S. Scanes 0; A. S. Le Lond 0, E. Bowen 1; A. J. Evans ½, R. Tregear ½; A. F. Garner 0, A. J. Bentley 1).  
Andover 3½, Woolston 1½.  
(C. H. Henshaw 1, G. Daw 0; S. L. Russell 1, D. Drew 0; J. M. Jarvis 1, M. D. Thompson 0; Miss M. Elliott ½, H. G. Dell ½; I. Miles 0, R. Krause 1).  
Southampton 3, Andover 2.  
(Details not yet available).

### TABLE

	P	W	D	G	P
Fareham	4	3	0	12	3
Bournemouth	4	3	0	10	3
Portsmouth	3	2	0	10	2
Young Pompeians	3	2	0	9½	2
Southampton	3	2	0	8	2
Andover	3	1	0	6½	1
Salisbury	3	1	0	6½	1
Cosham	4	1	0	7½	1
Woolston	3	0	0	5	0

The start of the fourth round in the County Individual Championship has been delayed because of a number of adjourned games, and the only third round results so far are, Smith 0, Thompson 1; Russell 0, Vine 1; Barton 0, Edmonds 1. The outstanding second round result was Valler 1, West 0.

In the Ladies' Championship there is one further result, Miss M. Elliott 1, Mrs. W. Pond 0.

There has been a re-arrangement of County fixture dates. The match Hants v. Bucks (50 boards), which was to have been played on January 21, has been postponed and will probably be played on March 18.

The 50-board match against Kent is still due to be played on February 18 but the 20-board match versus Oxfordshire will be brought forward from March 11 to March 4.

### PORTSMOUTH LEAGUE

There has been a virtual standstill in this competition but there is one pre-holiday result now available following the adjudication of an unfinished game.

White	Black	White
1. P-K4	P-QB4	10. P-KK4
2. K1-KB3	P-Q3	11. P-KR4
3. P-Q4	P x P	12. B x Kt
4. Kt x P	Kt-KR3	13. P-R5
5. K-QB1	P-KK13	14. P x P
6. P-KB1	B-K12	15. P-Kt5
7. B-K3	O-O	16. B x B
8. O-O2	Kt-R3	17. O-O4ch
9. O-O-O	P-QR3	18. P-Q4

**SENIOR SECTION (DIVISION 1)**  
Fareham "A" 1½, Portsmouth "A" 3½.  
(P. J. Cartmell 0, Dr. A. J. Pointon 1; T. de Buriatte ½, M. Dymond ½; F. Johnson 0, M. March 1; A. S. La Lond 1, D. M. Heywood 0; G. Farmer 0, A. Bacon 1).

### TABLES

#### SENIOR SECTION

Division	P	W	D	G	P
Cosham "A"	4	4	0	15½	4
Portsmouth "A"	4	3	0	13½	3
R.N.P.L.	4	1	2	10	2
Fareham "A"	4	1	1	8½	1½
P'mouth Gram "A"	4	1	0	5½	1
Comm. Centre	4	0	1	7	½

#### Division 2

Division	P	W	D	G	P
Portsmouth "B"	4	4	0	15	4
Gosport "A"	3	3	0	11½	3
Fareham "B"	4	3	0	13½	3
Cosham "B"	4	1	0	6½	1
De Havilland "A"	4	1	0	5	1
St John's "A"	5	0	0	8½	0

#### Division 3

Division	P	W	D	G	P
St John's "B"	4	3	0	13	3
Fareham "C"	3	2	1	10½	2½
Gosport "B"	4	1	2	11½	2
Portsmouth "C"	4	1	2	9	2
De Havilland	4	1	1	7½	1½
Cyanamid "B"	4	0	0	3½	0

### SCHOOLS SECTION

#### Division 1 (Section "A")

Division	P	W	D	G	P
Prices "A"	2	2	0	8	2
St John's "C"	1	1	0	5	1
Gosport Gram, "A"	1	1	0	3	1
P'mouth Gram, "B"	2	1	0	6	1
Purbrook "A"	2	0	0	3	0

#### Division 1 (Section "B")

Division	P	W	D	G	P
Tech. High "A"	5	3	1	14½	3½
St John's "D"	2	2	0	10	2
Portchester Mod.	2	1	1	5½	1½
Gosport Gram, "B"	2	1	0	5	1
Purbrook "B"	0	0	0	5	0

#### Division 2 (Under-15)

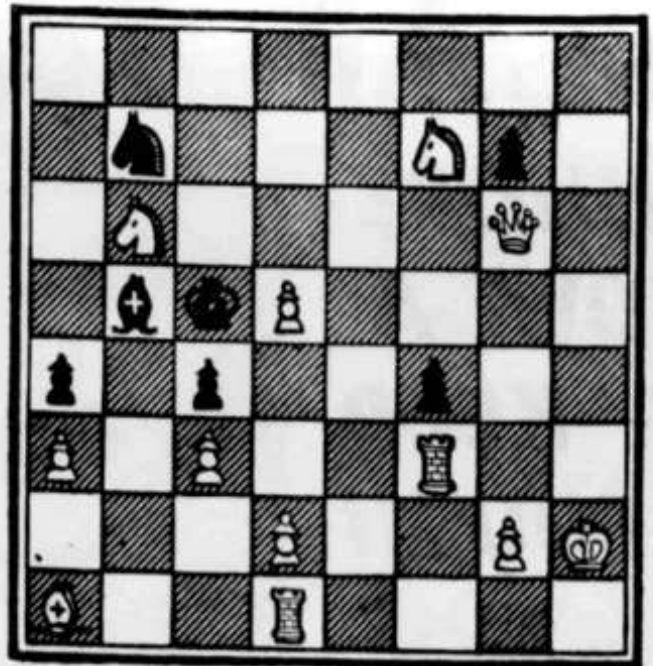
Division	P	W	D	G	P
St John's "F"	2	2	0	10	2
Tech. High "B"	2	2	0	7	2
St John's "E"	1	1	0	3½	1
Fareham Sec.	1	1	0	3	1
P'mouth Gram, "C"	2	1	0	4½	1
Purbrook "C"	1	1	0	6	1
Prices "B"	2	0	0	4	0
Gosport Gram "C"	0	0	0	2	0

### PRIZE GAME

The winner of the Boyd prize for the best game in the County and District Correspondence Championship 1960 was Mr. F. B. Roberts (Herts). He was White in the following game against R. J. James (Wilts).—

Black	White	Black
Q-B2	19. R-K1	Q-B4
Kt x Kt	20. Q-Q2	P-QK14
B-K3	21. Kt-Q5	R-R2
KR-B1	22. B-Q3	B-K3
RP x P	23. P-B5	B x Kt
Kt-R4	24. P x P	P x P
K x B	25. P x B	O x P
K-Kt1	26. Q-K3	OR-B2
B-K5	27. BxKKtP	Kt-K12
	28. R-R3ch	RESIGNS

BLACK (Seven Pieces).



WHITE (12 Pieces).