

THIS WEEK a results service and an imperfect one at that! I can mention (almost like gossip) that Hampshire played Dorset last week and certainly won the first-team match comfortably, while the second team were unable to stave off a comprehensive thrashing. In the next column I hope to give full details of the encounter.

Based on this week's clutch of results from the local league I can predict the Championship will be very open this year . . . at least until Gosport get their act together!

DIVISION I

MANGLERS A 1, COSHAM A 2: 1, K. D. F. Gregory v. S. Dean (u); 2, E. N. Holland 1, A. F. C. Carter 0; 3, M. Flower v. D. Gibson (u); 4, D. Hannam 0, A. D. Crossin 1; 5, A. G. Scoffin v. C. W. Bryan (u); 6, R. Davies 0, R. R. Carter 1.

IBM A 1, PORTSMOUTH A 1: 1, J. G. Nicholson 1, G. E. Oswald 0; 2, W. W. McDougall v. D. C. Spurgeon (u); 3, J. F. Wheeler v. I. R. Bradley (u); 4, R. E. Hartley v. R. V. Puchards (u); 5, S. J. Smith v. M. C. Hagan (u); 6, G. D. Jetha 0, S. Kent 1.

A very rare loss in the league by Graeme Oswald which probably indicates that IBM A will be in strong contention for the Championship.

FAREHAM A 3, GOSPORT A 2: 1, A. R. Corkett v. R. Marsh (u); 2, T. R. S. Pavlovic 0, M. L. Newbury 1; 3, D. Evans 1, M. D. Smith 0; W. H. Silber 1, D. A. Bloxson 0; 5, M. M. Street ½, D. J. White ½; 6, D. W. Coates ½, H. Golding ½.

And with Gosport A (the defending champions) unable to find their full side this result might make this season's competition more open.

DIVISION IV

IBM C 3½, Petersfield B 2½: 1, R. Hillier ½, B. Chambers ½; 2, G. Brenner 1, D. Ainslie 0; 3, A. Picton 0, P. Flack 1; 4, S. Hartley ½, D. Hague ½; 5, R. Hagon 1, R. Sweetinburg 0; 6, R. Williams ½, T. Hampton ½.

As we have quite a number of local teams involved in the County League I hope to be able to report their results and progress on a fairly regular basis. To that end Brian Cochran, the controller, has made available details of the first two rounds.

HAMPSHIRE LEAGUE

Division I

BASINGSTOKE A 5, PORTSMOUTH A 0: 1, P. Thompson 1, J. Stewart 0; 2, J. Fowler 1, D. Jeffery 0; 3, K. Hyde 1, S. Kent 0; 4, Ashmore 1, R. Prince 0; 5, E. Smith 1, L. Cunningham 0.

G.B.E. Andover A ½, IBM 4½: 1, S. Knox ½, W. McDougall ½; 2, D. F. Thompson 0, J. F. Wheeler 1; 3, T. Gray 0, S. Smith 1; 4, K. V. Gadd 0, R. Hartley 1; 5, F. Kelly 0, S. Hartley 1.

UNIVERSITY A 4½, BASINGSTOKE A ½.

GOSPORT A 4, G.B.E. ANDOVER A 1: 1, J. H. Jones ½, S. W. Know ½; 2, R. Marsh 1, D. F. Thompson 0; 3, Pezet ½, T. Gray ½; 4, M. D. Smith 1, K. V. Gadd 0; 5, D. A. Bloxson 1, F. Kelly 0.

IBM 3, UNIVERSITY 2: 1, K. D. F. Gregory ½, R. C. Noyce ½; 2, J. F. Wheeler 1, A. Faller 0; 3, S. Smith ½, J. Hopkins ½; 4, R. Hartley 1, P. House 0; 5, G. Jetha 0, K. Byard 1.

IBM lead the table with two wins, followed by Gosport one win and a draw.

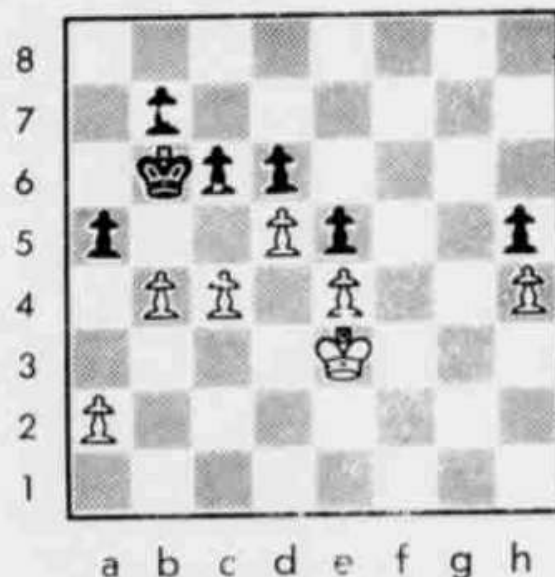
Division II

SOUTHAMPTON 3, G.B.E. ANDOVER B 2, PORTSMOUTH B 2½, LEIGH PARK 2½: 1, M. Hagan 0, D. Bennett 1; 2, S. Kent 1, K. Allen 0; 3, B. Cochran 1, J. Mortlock 0; 4, J. Stewart ½, J. Sexton ½; 5, F. Guy 0, S. Scott 1.

BASINGSTOKE B 3½, PORTSMOUTH B 1½: 1, P. Thompson 0, M. Hagan 1; 2, E. Smith ½, S. Kent ½; 3, F. Bowsey 1, J. Stewart 0; 4, J. French ½, R. Prince 0; 5, M. Bowhay 1, F. Guy 0.

SOUTHAMPTON 3, LEIGH PARK 2: 1, J. Stenhouse 1, S. LeFevre 0; 2, P. Symington ½, D. Bennett ½; 3, R. Perrin ½, N. LeFevre ½; 4, D. Webb 1, J. Mortlock 0; 5, A. Summers 0, J. R. Sexton 1.

This week a position from the Hampshire v. Dorset match. Black has just played 39, . . . a7-a5; and White has seconds to reach the time-control at move 42. No doubt pressure from the clock accounted for White's blunder, nevertheless how should he have continued?



White to move