

CHESS NOTES

by J.H.J.

Here, to start the New Year, are the latest batch of league results along with the relevant divisional tables.

Most of these tables are complete (as at four matches concluded) while the exceptions, which are clearly stated, should enable the reader to draw his own conclusions about the state of play.

DIVISION I

	P	W	D	G	Pt
Portsmouth A.....	4	3	0	15	6
Gosport A.....	3	3	0	13	6
Fareham A.....	3	3	0	12	6
Cosham A.....	3	1	0	8½	2
Manglers A.....	4	0	0	7	0
Portsmouth B.....	3	0	0	4½	0

The table does not include details of two unfinished matches: Portsmouth B 0, Cosham A 2, with four games to complete; Gosport A 1, Fareham A 1, with three games to complete and an adjudication to be resolved.

DIVISION II

As a consequence of played-on games, IBM A defeated IBM B by 3½ games to 2½: 2, J. F. Wheeler 1, S. J. Smith 0; while Plessey managed an identical result against Cosham B: 6, J. B. s. Cairns ½, G. F. Yates ½.

	P	W	D	G	Pt
Fareham B.....	4	4	0	17	8
IBM A.....	4	3	0	15½	6
Plessey.....	4	2	0	13	4
Cosham B.....	4	1	1	10	3
Leigh Park A.....	4	1	0	8½	2
IBM B.....	4	0	1	8	1

DIVISION III

PORTSMOUTH C 2½, GOSPORT B 3½: 1, L. Powell ½, M. P. Smith ½; 2, M. C. Hagan 0, S. P. Pezet 1; 3, N. Ruff 0, P. J. Eales 1; 4, N. Purkiss 1, K. S. O. Smith 0; 5, R. Stafford 0, D. J. White 1; 6, W. Laxton 1, H. Golding 0.

PETERSFIELD A 3½, FAREHAM C 2½: 1, R. H. Storr-Best 0, J. C. Monk 1; 2, P. Mayer ½, A. Chandler ½; 3, P. Flack 1, C. Fairall 0; 4, B. W. Chambers ½, M. J. Butler ½; 5, R. V. Phillips ½, R. C. Clark ½; 6, D. Collinson 1, J. Craig 0.

IBM C 2½, PORTSMOUTH D 3½: 1, Default 0, S. Kent 1; 2, T. Picton 0, F. S.

Adam Ali 1; 3, M. Jones 1, D. Jeffery 0; 4, A. B. Ball 1, R. Billingsley 0; 5, G. Brenner ½, P. Rogers ½; 6, G. Mason 0, J. Steward 1.

	P	W	D	G	Pt
Gosport B.....	4	3	1	15½	7
Portsmouth C.....	4	2	1	14	5
Petersfield A.....	4	2	1	11½	5
Fareham C.....	4	1	2	12	4
Portsmouth D.....	4	1	0	9½	2
IBM C.....	4	0	1	8½	1

DIVISION IV

MANGLERS B 2, EMSWORTH A 2: 1, A. G. Scoffin 1, Default 0; 2, K. Frisby v. K. Hyman (a), 3, M. Flower 1, R. Perry 0; 4, R. Davies 0, G. Vosper 1; 5, S. Millard 0, A. Quick 1; 6, J. Brassell 0, B. Walker 1.

FAREHAM D 1½, GOSPORT C 4½: 1, B. Massey 0, H. Golding 1; 2, A. Chandler 1, K. S. O. Smith 0; 3, M. J. Hockey 0, C. Emery 1; 4, M. Hemmens 0, A. Crouch 1; 5, C. Lusher ½, Mrs. S. Tovey ½; 6, N. Lusher 0, R. Strong 1.

LEIGH PARK B 2½, PAULSGROVE A 3½: 1, R. Smith 0, P. McEvoy 1; 2, J. Gaff 0, C. Smith 1; 3, J. Sexton 0, S. Phillips 1; 4, J. E. Mortlock ½, D. Worsfold ½; 5, S. Scott 1, J. Sims-Mindry 0; 6, A. J. Charlwood 1, M. Sammut 0.

	P	W	D	G	Pt
Paulsgrove A.....	4	4	0	16½	8
Emsworth A.....	3	3	0	12	6
Gosport C.....	4	2	0	14½	4
Leigh Park B.....	4	1	0	10½	2
Manglers B.....	3	1	0	6½	2
Fareham D.....	4	0	0	6	0

The Emsworth A v. Manglers B match (details above) which is awaiting an adjudication has not been included in this table.

DIVISION V

	P	W	D	G	Pt
Portsmouth E.....	4	3	1	15½	7
Gosport D.....	4	2	2	15½	6
Petersfield B.....	4	2	1	16	5
Emsworth B.....	4	2	1	14	5
Post Office.....	4	1	0	3	1
Paulsgrove B.....	4	0	0	8	0

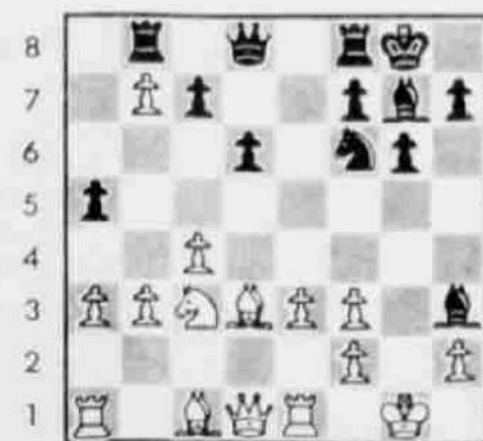
POST OFFICE 0, PETERSFIELD B 6: The home side could not raise a team so defaulted the match.

GOSPORT D 3½, PAUSGROVE B 2½: 1, P. Groth 0, M. Baxter 1; 2, J. Penn ½, P. Sibley ½; 3, C. Emery 1, M. Sammut 0; 4, A. Crouch 1, G. Clair 0; 5, A. Hemmens 0, J. Sims-Mindry 1; 6, I. Bartlett 1, F. Skillcorn 0.

Last week I drew your attention to the Portsmouth Congress which is being held at the Guildhall at the end of the month. Steve Phillips, who plays for Paulsgrove in the P.D.L., is, along with Pat McEvoy, a co-promoter of the event so if you want any details or an entry form you can contact him on 696322.

● Herewith a bit of fun from Gosport's internal quick-play tournament but I will spare White's blushes!

White: Anon; Black: J.H.J.: 1, c4 Nf6; 2, Nc3 g6; 3, d4 Bg7; 4, e3? (e4!), d6; 5, Nf3, O-O; 6, Bd3? (Be2!), Bg4; 7, O-O (h3!) Nc6; 8, a3 a5; 9, b3 (White is having problems developing his Queen's Bishop primarily through playing 4, e3) e5; 10, d5. (and here limited choice because of 6, Bd3) e4! (obvious but obligatory. White is going to suffer along the a1-h8 diagonal); 11, dxc6, exf3; 12, gxf3 Bh3; 13, cxb7 Rb8!; 14, Re1 (see diagram) Nd5!; 15, Nxd5! (as good as anything although I would rather have met 15, Ne2 or 15, Ne4 — to mask the threatened mate by 16, Ng3 — with 15, Nc3!! when White's game collapses dramatically) ... Og5+ (sleight of hand)!; 16, Resigns.



Black to move