

CHESS NOTES

by J.H.J.

Here, to start the New Year, are the latest batch of league results along with the relevant divisional tables.

Most of these tables are complete (as at four matches concluded) while the exceptions, which are clearly stated, should enable the reader to draw his own conclusions about the state of play.

DIVISION I

	P	W	D	G	Pt
Portsmouth A.....	4	3	0	15	6
Gosport A.....	3	3	0	13	6
Fareham A.....	3	3	0	12	6
Cosham A.....	3	1	0	8½	2
Manglers A.....	4	0	0	7	0
Portsmouth B.....	3	0	0	4½	0

The table does not include details of two unfinished matches: Portsmouth B 0, Cosham A 2, with four games to complete; Gosport A 1, Fareham A 1, with three games to complete and an adjudication to be resolved.

DIVISION II

As a consequence of played-on games, IBM A defeated IBM B by 3½ games to 2½: 2, J. F. Wheeler 1, S. J. Smith 0; while Plessey managed an identical result against Cosham B: 6, J. B. s. Cairns ½, G. F. Yates ½.

	P	W	D	G	Pt
Fareham B.....	4	4	0	17	8
IBM A.....	4	3	0	15½	6
Plessey.....	4	2	0	13	4
Cosham B.....	4	1	1	10	3
Leigh Park A.....	4	1	0	8½	2
IBM B.....	4	0	1	8	1

DIVISION III

PORTSMOUTH C 2½, GOSPORT B 3½: 1, L. Powell ½, M. P. Smith ½; 2, M. C. Hagan 0, S. P. Pezet 1; 3, N. Ruff 0, P. J. Eales 1; 4, N. Purkiss 1, K. S. O. Smith 0; 5, R. Stafford 0, D. J. White 1; 6, W. Laxton 1, H. Golding 0.

PETERSFIELD A 3½, FAREHAM C 2½: 1, R. H. Storr-Best 0, J. C. Monk 1; 2, P. Mayer ½, A. Chandler ½; 3, P. Flack 1, C. Fairall 0; 4, B. W. Chambers ½, M. J. Butler ½; 5, R. V. Phillips ½, R. C. Clark ½; 6, D. Collinson 1, J. Craig 0.

IBM C 2½, PORTSMOUTH D 3½: 1, Default 0, S. Kent 1; 2, T. Picton 0, F. S.

Adam Ali 1; 3, M. Jones 1, D. Jeffery 0; 4, A. B. Ball 1, R. Billingsley 0; 5, G. Brenner ½, P. Rogers ½; 6, G. Mason 0, J. Steward 1.

	P	W	D	G	Pt
Gosport B.....	4	3	1	15½	7
Portsmouth C.....	4	2	1	14	5
Petersfield A.....	4	2	1	11½	5
Fareham C.....	4	1	2	12	4
Portsmouth D.....	4	1	0	9½	2
IBM C.....	4	0	1	8½	1

DIVISION IV

MANGLERS B 2, EMSWORTH A 2: 1, A. G. Scoffin 1, Default 0; 2, K. Frisby v. K. Hyman (a), 3, M. Flower 1, R. Perry 0; 4, R. Davies 0, G. Vosper 1; 5, S. Millard 0, A. Quick 1; 6, J. Brassell 0, B. Walker 1.

FAREHAM D 1½, GOSPORT C 4½: 1, B. Massey 0, H. Golding 1; 2, A. Chandler 1, K. S. O. Smith 0; 3, M. J. Hockey 0, C. Emery 1; 4, M. Hemmens 0, A. Crouch 1; 5, C. Lusher ½, Mrs. S. Tovey ½; 6, N. Lusher 0, R. Strong 1.

LEIGH PARK B 2½, PAULSGROVE A 3½: 1, R. Smith 0, P. McEvoy 1; 2, J. Gaff 0, C. Smith 1; 3, J. Sexton 0, S. Phillips 1; 4, J. E. Mortlock ½, D. Worsfold ½; 5, S. Scott 1, J. Sims-Mindry 0; 6, A. J. Charlwood 1, M. Sammut 0.

	P	W	D	G	Pt
Paulsgrove A.....	4	4	0	16½	8
Emsworth A.....	3	3	0	12	6
Gosport C.....	4	2	0	14½	4
Leigh Park B.....	4	1	0	10½	2
Manglers B.....	3	1	0	6½	2
Fareham D.....	4	0	0	6	0

The Emsworth A v. Manglers B match (details above) which is awaiting an adjudication has not been included in this table.

DIVISION V

	P	W	D	G	Pt
Portsmouth E.....	4	3	1	15½	7
Gosport D.....	4	2	2	15½	6
Petersfield B.....	4	2	1	16	5
Emsworth B.....	4	2	1	14	5
Post Office.....	4	1	0	3	1
Paulsgrove B.....	4	0	0	8	0

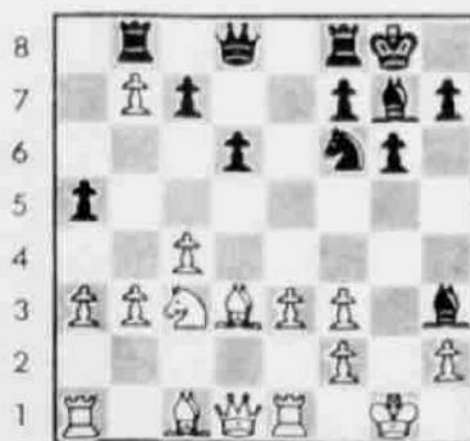
POST OFFICE 0, PETERSFIELD B 6: The home side could not raise a team so defaulted the match.

GOSPORT D 3½, PAUSGROVE B 2½: 1, P. Groth 0, M. Baxter 1; 2, J. Penn ½, P. Sibley ½; 3, C. Emery 1, M. Sammut 0; 4, A. Crouch 1, G. Clair 0; 5, A. Hemmens 0, J. Sims-Mindry 1; 6, I. Bartlett 1, F. Skillcorn 0.

Last week I drew your attention to the Portsmouth Congress which is being held at the Guildhall at the end of the month. Steve Phillips, who plays for Paulsgrove in the P.D.L., is, along with Pat McEvoy, a co-promoter of the event so if you want any details or an entry form you can contact him on 696322.

● Herewith a bit of fun from Gosport's internal quick-play tournament but I will spare White's blushes!

White: Anon; Black: J.H.J.: 1, c4 Nf6; 2, Nc3 g6; 3, d4 Bg7; 4, e3? (e4!), d6; 5, Nf3, O-O; 6, Bd3? (Be2!), Bg4; 7, O-O (h3!) Ncb; 8, a3 a5; 9, b3 (White is having problems developing his Queen's Bishop primarily through playing 4, e3) e5; 10, d5. (and here limited choice because of 6, Bd3) e4! (obvious but obligatory. White is going to suffer along the a1-h8 diagonal); 11, dxc6, exf3; 12, gxf3 Bh3; 13, cxb7 Rb8!; 14, Re1 (see diagram) Nd5!; 15, Nxd5! (as good as anything although I would rather have met 15, Ne2 or 15, Ne4 — to mask the threatened mate by 16, Ng3 — with 15, Nc3!! when White's game collapses dramatically) ... Og5+ (sleight of hand)!; 16, Resigns.



Black to move

CHESS NOTES

by J.H.J.

Latest
local
B.C.F.
details

THE following B.C.F. registrations have been received from P.D.L. by Peter Marshall: Cosham (14), Emsworth (11), Fareham (18), Gosport (27), IBM (21), Plessey (eight) and Portsmouth (23).

You should become a member of the B.C.F. if (a) you play in Divisions 1 or 2 of the P.D.L.; (b) you are required to play for the County; (c) you are required to play in B.C.F. Congress events; (d) you play in week-end events sponsored by the B.C.F.; or (e) you wish to be graded by the national computer.

If any of the above good reasons do not appeal, then join for philanthropic or jingoistic reasons!

Aid the junior game (which will lead to future achievements) or assist the game at national level. And remember that England have won silver medals in the last two Olympiads and, perhaps, via grass roots aid, a future team might be able to usurp the Russian team, who have invariably won the gold medals.

DIVISION 1

As a result of played-on games (1, S. Kent 1, A. F.

Brameld 0; 2, B. Cochran 0, S. Dean 1; 4, F. S. Adam Ali $\frac{1}{2}$, A. D. Crossin $\frac{1}{2}$; 6, B. K. Maund $\frac{1}{2}$, G. Train $\frac{1}{2}$) Portsmouth B lost by two games to four to Cosham A.

Gosport lead Fareham A $3\frac{1}{2}$ - $1\frac{1}{2}$ after played-on games were resolved (2, M. L. Newbury 1, T. R. S. Pavlovic 0; 5, J. H. Jones $\frac{1}{2}$, D. Evans $\frac{1}{2}$; 6, S. P. Pezel 1, J. Coburn 0 with Board Three, an adjudication, still to follow).



White to move

● The December 13 column had a diagram: 1k1r4; pp1r1p2; 4p1p1; 4P2p; q1p2P2; P1PbQ1pp; BP1R4; 2K1R3; with Black to move.

A. F. C. Carter of Cosham found a more decisive move than that played (33... Bb1) in the game won by A. F. Brameld, namely: 33... Bf5! It seems to me that White's only good reply would then be 34. Resigns!

The answer to 34. Red1, or 34. Red2, is Qc2 + 1 with mate next move, while if 34. Rh2, then Rd1 + ; with mate to follow. Other moves leave White at least a rook down with no compensation, so, if you also found Bf5, then award yourself a pat on the back!

In the actual game Arthur Brameld recalls that he was in time trouble which explains his slight lapse of accuracy.

● I am prepared to be corrected but I believe that PORTSMOUTH is the only club in the P.D.L. that meet twice a week, every Wednesday and Saturday. The members can be found at the Southsea Community Centre, St Paul's Square.

The club is of such a size (25 members) to support five teams in the local league: A and B play in Division 1; C and D play in Division 3, while the E side are in Division 5. Two teams also play in the Hampshire League.

An internal championship and a challengers tournament ensure that members have available all the chess that they could want.

Graham Oswald is the club's current top player and regular readers will know well of his exploits in the Portsmouth Congress where he has, in past seasons, defeated G.M. Nigel Short and several I.M.s.

The club cater for all grades of player, while new members will always be welcome. For any further information contact the Secretary, D. Jeffery, on 825298.

● In this week's diagram (see above) you are White and have the option of playing on or accepting the draw that Black has offered. If you play on you will have to calculate a variation ten moves long... that does not lose! What is your decision?

CHESS NOTES

by J.H.J.

THERE WERE no surprises in the second round of the P.D.L. Individual Championship:

R. V. Puchades $\frac{1}{2}$, S. J. Russell $\frac{1}{2}$; K. D. F. Gregory 1, M. R. Baker 0; R. H. Storr-Best 1, Default 0; M. Jones 1, W. Laxton 0; C. Wood 0, B. K. Maund 1; B. V. Cochran 0, D. A. Bloxsom 1.

Round 3, for which the limit date is February 14, has the following pairings: Storr-Best (2) v. Gregory (2); Puchades ($1\frac{1}{2}$) v. Jones ($1\frac{1}{2}$); Maund (1) v. Russell ($1\frac{1}{2}$); Bloxsom (1) v. Baker (1); Cochran (0) v. J. B. S. Cairns ($\frac{1}{2}$); Laxton (0) v. Wood (0).

Last week I left you with 2K1k3; 2P5; 2P5; 8; 8; 8; 1r2p3; 4K3 and if you accepted the offered draw then you will now be kicking yourself!

1. Rxe2+!! Rxe2; 2. Kb7, Rb2+; 3. Ka6 Ra2+; 4. Kb6! (it is vital that White remains close to the eight rank, e.g. 4. Kb5?) Ra8; 5. Kb6 Ke7!; 6. Kb7 Kd6! and Black draws. However, now 4. ... Ra8 fails to 5. Kb7 when the c-pawn queens) ... Rb2+ 5. Kc5, Rc2+; 6. Kd5, Rd2+; 7. Ke5 (7. Ke4 fails to Rd8! when White's king is one square too remote). If now Black continues to check then the king attacks the rook! e.g. 7. ... Re2+; 8. Kf4, Rf2+; 9. Ke3, and Black has no immediate saving checks) Rd8; 8. cxd8=Q+ Kxd8; 9. Kd6! Kc8; 10. c7, Kb7; 11. Kd7, and White wins.

The league competition has restarted after the seasonal break.

DIVISION 1

COSHAM A $1\frac{1}{2}$, GOSPORT A $2\frac{1}{2}$: 1, A. F. Brameld $\frac{1}{2}$, M. D. Smith $\frac{1}{2}$; 2, S. Dean v. M. L. Newbury (u); 3, A. F. C. Carter 0, J. H. Jones 1; 4, D. Gibson $\frac{1}{2}$, D. A. Bloxsom $\frac{1}{2}$; 5, A. D. Crossin v. D. E. Pye (u); 6, C. W. Bryan $\frac{1}{2}$, D. J. White $\frac{1}{2}$.

MANGLERS A $4\frac{1}{2}$, PORTSMOUTH B $1\frac{1}{2}$: 1, K. D. F. Gregory 1, A. Daley 0; 2, D. Hannam 1, S. Kent 0; 3, E. N. Holland 1, F. S. Adam Ali 0; 4, A. G. Scoffin 1, B. Cochran 0; 5, M. Flower $\frac{1}{2}$, B. K. Maund $\frac{1}{2}$; 6, N. A. L. Phillips 0, D. Jeffery 1.

This was a good result for Manglers, who greatly increase their chances of survival in this division at the expense of their opponents, who were promoted this season.

PORTSMOUTH A 4, FAREHAM 2: 1, G. Oswald 1, J. Goddard 0; 2, D. Spurgoen $\frac{1}{2}$, T. R. S. Pavlovic $\frac{1}{2}$; 3, R. Puchades $\frac{1}{2}$, J. E. Arney $\frac{1}{2}$; 4, L. Powell 0, W. H. Silber 1; 5, M. C. Hagan 1, D. E. Evans 0; 6, N. Purkis 1, J. A. Coburn 0.

Portsmouth must be well pleased with this result where, apart from Board 1, they were, on paper, outgraded on every other board. This qualifies as the first major upset of the season!

Played in the aforementioned match Cosham A v. Gosport A:

White: J. H. Jones; Black: A. F. C. Carter — 1. e4, c5; 2. Nf3, g6; 3. d4 (3. Bc4!) cxd4; 4. Nxd4 (4. Qxd4!) Bg7; 5. Nc3, Nc6; 6. Be3 Qa5 (?); (6. ... d6!); 7. Qd2 Nf6; 8. f3, O-O; 9. g4! a6 (9. ... d6!); 10. h4, h5; 11. Nb3, Qd8 (if 11. ... Qc7; then 12. Bf4 is playable but more aggressive is 12. g5, Ne8; 13. f4!); 12. g5, Ne8; 13. Nd5 d6 (at last, but forced); 14. Bb6, Qd7; 15. O-O-O (?), e6; 16. Bh3 (also 16. Ne3!) Ne5!; 17. Qe2 Qa4 (? (17. ... Qb5!; both players were moving into time trouble); 18. Rd4! Qb5; 19. c4! (a complex position that could hardly be analyzed in the time available); 19. Qa4! 20. c5 Qb5!; 21. Qxb5 axb5; 22. Ne7+ Kh7; 23. f4 Nc4; 24. e5 (!) may suffice for White); 20. Ne7+ Kh7; 21. Rxc4, Qxb6 (21. ... d5!); 22. Nxc8 Qb5 (22. ... Qd8); 23. Qc2, Be5? (23. ... Qe5! (see diagram) Now White finds a neat forcing finish); 24. a4! Bf4+; 25. Kb1 Qe5; 26. Nb6 Rd8; 27. Rc8! Ng7 (otherwise 27. ... Rxc8; 28. Qxc8 Qh8; 29. Nd7, Rg8; 30. Qxb7 and the extra piece wins); 28. Rxd8 Rxd8; 29. Nc4! (according to choice White will end up either a rook or two pieces ahead) so Black resigns.



CHESS NOTES

by J.H.J.

HAMPSHIRE recently travelled to Exeter to play a home match (!) against Cornwall over 32 boards with the top 16 scoring towards the B.C.F. Inter-County Championship and the remaining boards counting for the second team competition. Although not at full strength Hampshire won comfortably in both events: 11½-4½ and 13½-2½.

Twelve local stalwarts netted 7½ points although clearly the top two players might have done better had they paid the Piper! My own game was marred by time trouble (20 moves in five minutes) and with a move to make in the position 8/pBrk1Q2/5p2/4pb2/2Pb3p/P3q3/3R1NPP/5K2, I blundered with 42... Kd6 (42... Kd8 would appear to offer excellent chances of at least a draw). Now, with white to move, adjudication analysis proved an easy win for White (I'll leave you to work it out!). Yet even the opposition offered sympathy at my (mis)fortune.

4. J. H. Jones 0, S. J. Piper 1; 6. S. Dean 0, M. S. Piper 1; 7. J. E. Arney ½, P. J. Williams ½; A. D. Crossin 1, J. E. Reed 0; 9. M. L. Newbury ½, A. Barkhysen ½; 10. S. P. Pezet 1, A. D. Meake 0; 15. W. H. Silber ½, M. Jolly ½; 20. M. C. Hagan 1, K. Wilkinson 0; 21. M. R. Baker 1, L. Jupp 0; 29. S. D. Le Febre ½, M. Hooper ½; 30. R. C. Clark ½, D. Richards ½; 31. H. Golding 1, M. Garrett 0.

Incidentally R. C. (Reg) Clark, who is 70, is well on the way to establishing an unusual record for the most number of opponents whose sum of ages is less than his own. In the last three county matches his opponents have been seven, 12, and nine years of age respectively!

Let me give local players a timely reminder to support your local congress to be held at the Guildhall this coming week-end. Entries should be received by Thursday and Pat McEvoy on 388341 or Steve Phillips on 696322 are awaiting your call. The grade limits for each category of tournament are: Beginners (99 maximum); Minor (129 maximum); Major (159 maximum) and Open (no grade restriction).

DIVISION I

As a consequence of the adjudication 3. D. E. Pye 0, J. E. Arney 1, Gosport A defeated Fareham A by 3½ games to

I hope to see you there, so get phoning!

2½. While the played-on game 2. S. Dean ½, M. L. Newbury ½ edged Gosport A to a 3-2 lead over Cosham A with board 5, which is favourable to Gosport, to be resolved.

DIVISION II

IBM A 5, Plessey 1.

1. J. G. Nicholson 1, P. A. Rayment 0; 2. J. F. Wheeler 1, D. G. Foale 0; 3. P. J. Burns 1, C. Wood 0; 4. B. S. Pratt 1, A. C. Rodger 0; 5. G. D. Jefftha 1, J. B. S. Cairns 0; 6. G. Brenner 0, P. R. Maddocks 1.

A good result for IBM which keeps alive their hopes of returning to Division I after relegation last season.

Cosham B 1½, Fareham B 4½.

1. R. R. Carter 0, D. Evans 1; 2. M. R. Baker 0, J. R. Poulton 1; 3. F. G. Abercrombie ½, M. M. Street ½; 4. A. D. Smith 1, T. A. Wykes 0; 5. A. K. Harris 0, D. Coates 1; 6. C. M. Bench-Capon 0, J. Monk 1.

However, Fareham, who have won all their matches, must at this stage of the season, be favourites for promotion.

DIVISION III

An appeal by Fareham against a previous adjudication was returned as 3. G. Brenner ½, A. F. Stroud ½, and leads to the amended result IBM C 2½, Fareham C 3½. This significantly affects a previously issued table so here is the corrected table.

	P	W	D	L	Pts
Gosport B	4	1	1	2	7
Pinesworth C	4	1	1	2	7
Fareham C	4	2	1	1	11
Pinesworth A	4	2	1	1	11
Pinesworth D	4	1	0	3	7
IBM C	4	0	0	4	4

And the eagle-eyed among you should note that this table contains a match played over only five boards so the game total of 71 is correct.

DIVISION IV

Margers B drew 3-3 with Ensworth A after this adjudicated result 2. K. J. Freely 1, K. Nyman 0.



IT IS with deep sadness that I report that John Grant (71) died peacefully last Monday after he had been confined to his bed for some weeks.

John was a real servant of chess from club throughout national level, although regular readers might only know him as "Mr. Chess Notes."

At the Fareham Club, which he joined in 1951, he was secretary and treasurer from 1952 through 1985 but he managed a few years off in the mid-60s to serve as president (1962/3/4). No mean player he won the Club Championship in 1956, 1964, and 1966 in the eras of Harry Golombek and Wilf Pratten.

John served the P.D.L. as secretary and treasurer from 1952, at a time when there was only a single division, till 1962. At that time three divisions were formed, his previous post split, and he continued as treasurer until 1986. When no controller could be found for the P.D.L. Individual Championship John, naturally, filled the gap (1983/4/5). In 1984 he won the Ruth Rose Cup (the over 60s Cup) and was "tickled pink!"

For Hampshire, John was also tireless: 23 years as secretary (1962-1985). And, in 1986, when no treasurer could be found — yes you know! — John again volunteered.

When Hampshire left the S.C.C.U. on a point of principle about playing all county matches in London the West of England gained a new county and a new treasurer. John served from 1972-1982.

I recall my first league game against him (was it only 25 years ago?) I could hardly claim to be a "wunderkind," although I had a string of wins (mainly in the lower division) which he well knew, as, even at that time, he edited this very column! He made some apt appreciative comment before the game (which doubtless encouraged me to win) and afterwards was equally kind about my play. As much as anything this genuine enthusiasm and total lack of side typified the man.

I will miss him, many will miss him, few will forget him.

HAMPSHIRE LEAGUE

Brian Cochran who is the controller of this competition has provided this latest batch of results.

DIVISION I: Portsmouth A 1,

Basingstoke A 4; University 4½, Legg A ½; Southampton A 1½, I.B.M. 3½; I.B.M. ½, Portsmouth A 4½.

1, K. D. F. Gregory 0, G. Oswald 1; 2, J. F. Wheeler 0, D. Spurgeon 1; 3, R. E. Hartley 0, M. C. Hagan 1; 4, A. Ball ½, P. G. Smith ½; 5, G. D. Jefftha 0, F. S. Adam All 1.

Southampton A 2½, Legg A 2½; Southampton A 2, Basingstoke A 3; Legg A 2, I.B.M. 3.

	P	W	D	G	Pt
Basingstoke A	5	5	0	19½	10
University	4	4	0	17	8
I.B.M.	6	3	0	11	6
Portsmouth A	5	2	0	10	4
Legg A	5	1	1	13½	7
Southampton A	6	0	1	9	1

Brian notes that the position of Southampton A (the runaway winners of Division II last season) clearly reflects the difference in standard between the divisions.

DIVISION II: Portsmouth B ½, Leigh Park 4½

1, P. G. Smith ½, A. J. Peters ½, 2, S. Cragg 0, G. Bailey 0, 3, D. Jeffers 0, 1, N. Mottack 1, 4, J. Stenzel 0, 5, Scott 1, 5, R. Prince 0, J. Serlon 1.

Southampton B ½, Salisbury 4½, Legg B 0, Basingstoke B 5, Leigh Park 4, Legg B 1, Basingstoke 4, Southampton B 1, Southampton B 5½, Portsmouth B 1½.

	P	W	D	G	Pt
Salisbury	4	4	0	18½	8
Basingstoke B	5	4	0	17	8
Southampton B	6	3	0	15	6
Portsmouth B	5	2	0	12	4
Leigh Park	5	2	0	11	4
Legg B	5	0	0	17½	0

J. French of the Basingstoke Club notes that they have recently gained quite a few new members of high grade and expresses the hope that their club might lift both divisional trophies this season.

As last week's column suffered a slight glitch I will repeat the details relating to the study.

Most players know that the shortest distance between two points is a straight line. However, G. M. Richard Bell confounds us with the unusual geometry of the chessboard in this study composed in 1929. It is White to move and draw.



CHESS NOTES

by J.H.J.

THE STUDY that I held over was 8/6p1/k1P2p1p/7K/8/8/8 with white to move and draw

1. Kg6. Kb6. (if instead black tries 1... f5; 2. Kxg7! f4; 3. Kf6! and follows the theme of the main variation unless black tries 3... f3; 4. K36! f2; 5. C7! Kb7; 6. Kd7! which forces a queen — with check! — and thereby draws) 2. Kxg7! f5; (black cannot try 2... Kxf6; 3. Kxf6 when white will also win the h-pawn if 2... h5; then 3. Kxf6, h4; 4. Ke5! With the dual threats of Kd6 and Kf4) 3. Kf6! f4; 4. Ke5! f3; 5. Kd6! (so this "straight line" was from h5 to d6 via g6, g7, f6 and e5) f2; 6. e7! and the resulting queen ending is drawn

DIVISION 1

The match result Cosham A 2, Gosport A 4 was finalized when the board five game was resolved. D. E. Pye 1, A. D. Crossin 0.

Manglers A 1½, Fareham A 4½.

1. K. D. F. Gregory 1, T. R. S. Pavlovic 0; 2. D. Hannam 0, J. F. Arney 1; 3. R. Davies ½, W. H. Silber ½; 4. E. W. Holland 0, D. F. Evans 1; 5. K. J. Frisby 0, J. A. Coburn 1; 6. N. Phillips 0, J. R. Poulton 1.

Cosham A 4, Portsmouth A 1.

1. A. F. Brameld v. G. Oswald (u); 2. S. Dean 0, D. Spurgeon 1; 3. A. F. C. Carter 1, R. Puchades 0; 4. D. Gibson 1, I. Powell 0; 5. A. D. Crossin 1, N. Purkis 0; 6. C. W. Bryan 1, N. Ruff 0.

This unfortunate result for Portsmouth greatly increases Gosport's chances of winning the league.

Portsmouth B 0, Gosport A 3.

1. S. Kent 0, R. C. Noyce 1; 2. F. S. Adam-Aliv v. M. I. Newbury (u); 3. B. Sweeney v. P. E. Pye (u); 4. S. Cragg v. J. H. Jones (u); 5. B. Cochran 0, M. D. Smith 1; 6. B. K. Maund 0, S. P. Pezet 1.

DIVISION 3

Gosport B 3½, Fareham C 1½.

1. S. P. Pezet 1, J. Monk 0; 2. M.

D. Smith ½, A. Chandler ½; 3. D. A. Blossom v. A. Stroud (u); 4. D. J. White 1, M. Butler 0; 5. K. S. O. Smith 0, S. Evans 1; 6. B. E. Gale 1, M. Hockey 0.

Portsmouth C 5, I.B.M. C 1.

1. I. L. Powell 1, A. Ball 0; 2. M. C. Hagan 1, G. Brenner 0; 3. N. Parkiss 0, M. Jones 1; 4. N. Ruff 1, A. Wilkinson 0; 5. R. Stafford 1, T. Picton 0; 6. W. Laxton 1, G. Mason 0.

Portsmouth D 4, Petersfield A 2.

1. F. S. Adam-Aliv 0, H. Storr-Best 1; 2. B. Sweeney 1, P. Mayer 0; 3. S. Cragg 1, B. Chambers 0; 4. B. K. Maund 1, P. Flack 0; 5. S. Kent 1, D. Collinson 0; 6. D. Jeffery 0, J. Terry 1.

DIVISION 4

Manglers B 3½, Gosport C 2½.

1. A. G. Scoffin 0, H. Golding 1; 2. M. Fowler 1, K. S. O. Smith 0; 3. K. Frisby ½, A. Crouch ½; 4. R. Davies 0, C. Emery 1; 5. S. Millard 1, P. Groth 0; 6. J. Brassell 1, Mrs. S. Tovey 0.

Fareham D 2½, Leigh Park B 3½.

1. B. Massey 0, J. Gatt 1; 2. A. Harris ½, S. Scott ½; 3. A. Chandler ½, R. Smith ½; 4. S. Evans ½, J. Sexton ½; 5. M. Hemmens 0, A. Charlwood 1; 6. C. Lusher 1, V. Agins 0.

Emsworth A 3½, Paulsgrove A 2½.

1. M. Body 1, P. McEvoy 0; 2. G. Vosper 1, C. Smith 0; 3. R. Perry ½, S. Phillips ½; 4. K. Hyman 0, D. Worsfold 1; 5. A. Quick 1, P. Sibley 0; 6. B. Walker 0, M. Baxter 1.

One of these teams should win this division, so Emsworth, by winning, are currently the favourites.

DIVISION 5

Paulsgrove B 6, Post Office 0. By default Post Office unable to raise a team.

SPOTLIGHT ON GOSPORT

During the League season (September to May) the Gosport Club meets every Friday at the Gosport

Community Centre, Bury Road. Play usually starts about 7.15 p.m., although junior training, which is conducted jointly by David White and John Jones, begins at 6.30 p.m. Summer Chess continues according to demand (usually every other Friday).

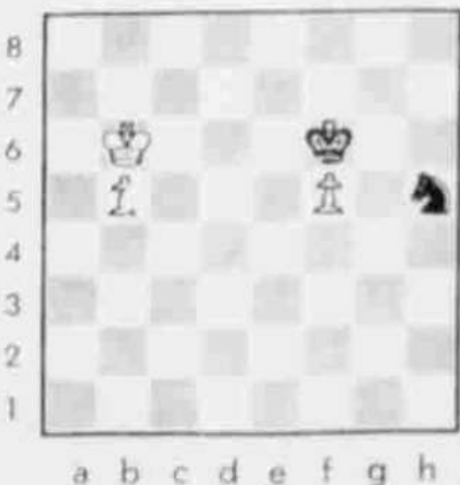
Gosport currently run four teams in the local League: A (Division 1); B (Division 3); C (Division 4) and D (Division 5). Hopes are high for more than one trophy by the conclusion of the season.

With a membership of 35 (12 up on last season!) the club entertain thoughts of managing five teams next season and would expect to play in the Hampshire League and the PDL Cole Cup (Controllers please note!)

Two closed tournaments are organized within the club: a championship (Swiss pairing) and a quick-play competition (following the system advocated by the Fareham club).

New members (including Juniors) will be welcomed whatever their strength or pretensions. Additional information may be obtained from the Secretary, Henry Golding, on 502567 or Club Captain, John Jones, on 503244.

Finally, a study by F. J. Prokop, 1925, with white to move and win. White to move.



Chess notes by J.H.J.

EVEN though there was a clash with the Portsmouth Congress on January 31 the county match against Devon, played at Ilminster, went ahead.

In the event a moderately strong first team encountered opposition that was below par. Nevertheless at the call of time Devon led by 6½ to 5½. Hampshire are claiming two wins and two draws in the adjudicated games so the final outcome of the match may be close.

The second team were not so fortunate when, as a result of the clash noted above, they started with a handicap of four defaults. This proved too much and Devon II won by 10 games to six.

Details (Hampshire White on odd boards).

4. A. F. Brameld ½, B. V. Hewson ½, 6. J. H. Jones 1, R. Lingham 0, 9. J. E. Arney ½, Miss J. A. Anson ½; 10. M. L. Newbury 0, A. Brusty 1, 13. A. D. Crossin 1, S. V. White 0, 16. W. H. Silber ½, R. V. Cross ½; 17. A. D. Williams ½, J. Hayward ½; 25. R. C. Clark 0, C. Deakin 1.

DIVISION I: Cosham A defeated Portsmouth A by 4½ games to 1½ after the top board was resolved, A. F. Brameld ½, G. Oswald ½.

DIVISION II: Plessey 2½, Fareham B 2½.

1. D. Pownall 0, D. Evans 1; 2. P. A. Rayment 1, J. R. Poulton 0; 3. D. G. Foale ½, M. M. Street ½; 4. C. Wood ½, T. A. Wykes ½; 5. A. C. Rodger 0, D. Coates 1; 6. J. B. S. Cairns ½, J. Monk ½.

Cosham B 1½, I.B.M. B 2½.

1. A. D. Crossin v. J. M. Morris (u); 2. G. Train 1, S. J. Smith 0; 3. M. R. Baker 0, A. J. Wilkinson 1; 4. R. R. Carter v. M. J. Jones (u); 5. A. D. Smith 0, R. G. J. Hillier 1; 6. A. F. Langley ½, K. Gledstone ½.

I.B.M. A 6, Leigh Park A 0.

1. J. G. Nicholson 1, A. J. Peters 0; 2. W. M. McDougall 1, N. G. LeFevre 0; 3. J. F. Wheeler 1, S. D. LeFevre 0; 4. R. E. Hartley 1, J. N. Mortlock 0; 5. P. J. Burns 1, R. Smith 0; 6. B. S. Pratt 1, J. D. J. Gatt 0.

DIVISION V: Portsmouth E 3, Gosport D 3.

1. D. Jeffery 0, W. F. Isbell 1; 2. P. Smidy ½, A. D. Crouch ½; 3. R. Prince ½, J. Penn ½; 4. P. Rogers 1, A. D. Hemmens 0; 5. F. Guy 0, I. B. Bartlett 1; 6. W. Couch 1, P. A. Williams 0.

Emsworth B 2½, Petersfield B 3½.

1. A. Whitehead 0, B. Chambers 1; 2. A. J. Vosper 1, D. Ansie 0; 3. J. Delaney 1, P. Flack 0; 4. J. Hollis 0, D. Collinson 1; 5. M. Levy ½, M. Copple ½; 6. S. Hubbard 0, R. Sweetenburgh 1.

Gosport D 6, Post Office 0.

Post Office failed to appear so lost by default.

Last week you pondered 8/8/1K3K2/1P3P1n/8/8/8, by Prokop.

Clearly White must get the b-pawn moving. Yet 1. Kc5 is answered by 1... Ke7 aiming for the queening square. On 1. Kc7 comes 1... Nf4! (with the treat 2... Nd5!) and the Knight will catch up with b-pawn after, say, 2. Kd6, Nd3; 3. b6, Nb4; 4. b7, Na6.

Consequently 1. Kc6!, Ke7! (to allow the Knight access to f6+), Ke6; 5. f7!, Ke7; (after 5... Nb8+; comes 6. Ke7, Na6+; 7. Kbb6, when White wins) 6. f8=Q+ (either the Knight is drawn away from the defence of b8, or the King must undefend the Knight) White wins.

Results of the P.P.L. team quick-play competition (Cole Cup) are to hand.

Round III

Emsworth A 1, Portsmouth B 4; I.B.M. A 4, Leigh Park A 1; Cosham B 0, Manglers A 4 (this match contained a double default).

Cosham A 4½, Fareham B ½.

The draw for the semi-finals is Portsmouth B v. I.B.M. A, Manglers A v. Cosham A, and these matches must be resolved by the end of the month.

Keith Gregory, who is the controller, notes that I.B.M. A and Cosham A are likely to meet in the final, and, in that case, it will be their third meeting in five years. So far, in three matches, I.B.M. have scored 14 game points and Cosham have gained 13 so some interesting matches are in store.

Cole Plate results (for teams eliminated in the first round of the Cole Cup).

Round I

Paulsgrove A 3, Leigh Park B 2; Manglers B 1½, Fareham C 3½; Plessey 1½, Fareham A 3½.

Draw for the second round which must be completed by the end of the month.

Fareham A v. Portsmouth A; I.B.M. C v. Fareham C; Post Office v. I.B.M. B; Paulsgrove B v. Paulsgrove A.

This week a study by J. Behting, 1929, and it is White to move and win. As it is quite easy to lose as White I will point out the line that you must avoid. After 1. a6?, g3!; Black wins.

White to move.



Chess notes by J.H.J.

IN LAST week's column the solution to the study by Prokop was incomplete so I will repeat the basic moves.

Starting with the position 8; 8; 1K3k2; 1P3P1n; 8; 8; 8; 8; the main lines goes: 1, Kc6! Ke7!; 2, b6, Nf6; 3, b7, Nd7; 4, f6+! Ke6; 5, f7! Ke7; 6, f8=Q* and White wins.

This week there are many results from the P.D.L. and I can report that the backlog, caused by the far from clement weather earlier in the year, has now been cleared.

DIVISION I

Gosport A did less well than they hoped in the unfinished games against Portsmouth B although they did manage a 4-2 win after these results: 2, F. S. Adams-Ali ½, M. L. Newbury ½; 3, B. Sweeney 1, D. E. Pye 0; 4, S. Cragg ½, J. H. Jones ½.

DIVISION II

Leigh Park A-4, IBM B 2: 1, A. J. Peters 0, J. M. Morris 1, 2, S. D. LeFevre ½, S. J. Smith ½; 3, N. G. LeFevre 1, A. J. Wilkinson 0; 4, J. N. Mortlock ½, A. Ball ½; 5, R. Smith 1, R. G. J. Hillier 0; 6, J. D. J. Gatt 1, K. Gledstone 0.

As a consequence of played-on games, Cosham B were defeated 2½-3½ by IBM B: 1, A. D. Crossin ½, J. M. Morris ½; 4, R. R. Carter ½, M. Jones ½.

DIVISION III

IBM C 2, Petersfield A 4: 1, T. Picton 0, H. Storr-Best 1; 2, M. Jones 0, G. Gardner 1; 3, A. Ball ½, B. Chambers ½; 4, A. Wilkinson ½, D. Collinson ½; 5, G. Brenner 0, P. Flack 1; 6, R. Cole 1, J. Terry 0.

Portsmouth C 4, Fareham C 2: 1, L. Powell 0, J. C. Monk 1; 2, M. C. Migan 1, A. Chandler 0; 3, Ruff 1, M. J. Butler 0; 4, N. Purkis ½, A. F. Stroud ½; 5, P. Smith ½, H. A. Tadevossian ½; 6, Laxton 1, M. J. Hockey 0.

Portsmouth D 2, Gosport B 4: 1, S. Cragg 0, M. D. Smith 1; 2, B. Sweeney 1, D. J. White 0; 3, S. Kent 1, P. J. Eales 0; 4, B. Maund 0, K. S. O. Smith 1; 5, D. Jeffery 0, A. Crouch 1; 6, P. Rogers 0, H. Golding 1.

DIVISION IV

Manglers B 1, Paulsgrove A 5: 1, Default 0, P. McEvoy 1; 2, M. Flower 0, C. Smith 1; 3, R. Davies 0, S. Phillips 1; 4, S. Millard 0, D. Worsfold 1; 5, J. Brassell 0, J. Scotney 1; 6, E. Holland 1, M. Sammut 0.
Fareham D 3, Emsworth A 2: 1, A. Harris 0, M. Body 1;

2, H. A. Tadevossian 1, G. Vosper 0; 3, A. Chandler ½, R. Perry ½; 4, S. Eavns 1, K. Hyman 0; 5, C. Lusher 0, B. Walker 1; 6, M. Sygrove 1, A. Whitehead 0.

Before this match Emsworth were heading the division with 9/10 and Fareham hadn't scored a point, so this notable result sees Paulsgrove ease into the top spot.

DIVISION V

Portsmouth E 1½, Petersfield B 3½: 1, S. Cragg ½, M. Copple ½; 2, E. Nancarrow 0, D. Collinson 1; 3, D. Jeffery 0, P. Flack 1; 4, P. Rogers 1, D. Ainslie 0; 5, R. M. Prince v. J. Terry (a); 6, F. Guy 0, V. Phillips 1.

Paulsgrove B 1½, Emsworth B 4½: 1, P. Sibley 0, A. Quick 1; 2, M. Baster 0, A. Whitehead 1; 3, J. Taylor 0, A. J. Vosper 1; 4, J. Sims-Mindrey 0, J. Delaney 1; 5, M. Sammut ½, J. Hollis ½; 6, G. Claire 1, M. Levy 0.

I will produce full divisional tables once seven matches have been completed and again at the end of the season. For the moment I will list the details of the leaders in each division:

DIVISION 1: Gosport A — P6, W6, D0, G24½, Pt12;
DIVISION 2: Fareham B — 6, 6, 0, 25, 12; DIVISION 3: Gosport B — 6, 5, 1, 23, 11; DIVISION 4: Paulsgrove A — 6, 5, 0, 24 10; DIVISION 5: Gosport D — 6, 3, 3, 24½, 9.

Last week I left you with a study by Benting: 1k6; 1P6; 2P5; P7; 5ppp; 8; 7K1; 8; and it was White to move and win.

1, Kg1! Kc(a)7; (Black can move his King to either of its legal squares. If instead 1, . . . g3; 2, Kg2! or, say, 1, . . . h3; 2, Kh2! f3; 3, Kg3! when White will force the Black King to move); 2, b8=Q+ (not 2, a6, Kb8!; 3, Kg2 g3!; and Black wins) Kxb8; 3, a6! f3; 4, Kf2! h3; 5, Kg3! h2; 6, Kxh2 f2; 7, Kg2, g3; 8, Kf1! (If the Black King moves then a White pawn will queen so Black can only exhaust his tempi by first losing his own pawns . . . and then moving his King). White wins.

The Hampshire Club Quick-Play Tournament will be held at the Sarisbury Social club on Sunday March 1, starting at 9.30 a.m. If the entry is sufficient there will be seven rounds during the day and prizes (first, second and third along with board prizes) will be presented at 5.45 p.m. Enquiries can be made of Len Walters on Southampton 854083.

Chess notes by J.H.J.

AS I indicated in an earlier column the outcome of the county match against Devon would be close. In fact we were narrowly defeated by $8\frac{1}{2}$ to $7\frac{1}{2}$ when the B.C.F. panel handed down a win for Yeo, a loss for Failer and draws for Walker and Bell in the outstanding adjudications.

Today Hampshire are playing Dorset at Parkstone while the last match (against Gloucestershire) will be played on March 14. To qualify for the B.C.F. inter-county play-offs we must certainly win the last match by a reasonable margin.

Peter Marshall, the county captain, is on (0703) 774464.

DIVISION I

Fareham A 2, Cosham A 1 — 1, T. R. S. Pavlovic 1 A. F. Brameld 0; 2, W. H. Silber $\frac{1}{2}$, S. Dean $\frac{1}{2}$; 3, D. E. Evans v. A. F. Carter (u); 4, J. A. Coburn v. A. D. Crossin (u); 5, D. W. Coates v. C. W. Bryant (u); 6, T. A. Wykes $\frac{1}{2}$, G. F. Train $\frac{1}{2}$.

Portsmouth A $1\frac{1}{2}$, Portsmouth B $1\frac{1}{2}$ — 1, G. Oswald v. F. S. Adam-Ali (u); 2, D. Spurgeon $\frac{1}{2}$, S. Kent $\frac{1}{2}$; 3, I. Bradley 0, N. StVile 1; 4, R. Puchades 1, S. Cragg 0; 5, M. Hagan v. B. Maund (u); 6, N. Purkis v. B. Cochran (u).

Gosport A 2, Manglers A 0 — 1, R. C. Noyce v. K. D. F. Gregory (a); 2, M. L. Newbury v. D. Hannam (u); 3, S. P. Pezet v. E. N. Holland (a); 4, D. E. Pye 1, M. Fowler 0; 5, M. D. Smith v. A. G. Scoffin (a); 6, D. J. White 1, R. Davies 0.

This round of matches looks well contested with no outcome yet resolved. Manglers and Portsmouth B are clearly playing for survival in the division while the remainder are trying to keep in touch with Gosport so as to take advantage of any slip by that team.

DIVISION III

The adjudication returned from the B.C.F. panel for the Gosport B v. Fareham C match was given as, 3, D. A. Blossom $\frac{1}{2}$, A. F. Stroud $\frac{1}{2}$, leaving Gosport 4-2 winners. I understand that this may not be the final result as Gosport have initiated an appeal.

DIVISION IV

Gosport C $4\frac{1}{2}$, Leigh Park B $1\frac{1}{2}$ — 1, H. Golding 1, J. Morlock 0; 2, A. Crouch

$\frac{1}{2}$, S. J. Scott $\frac{1}{2}$; 3, K. S. O. Smith 1, R. Smith 0; 4, P. Groth 1, J. Sexton 0; 5, Mrs. S. Tovey 0, A. Charlwood 1; 6, R. Strong 1, V. Agius 0.

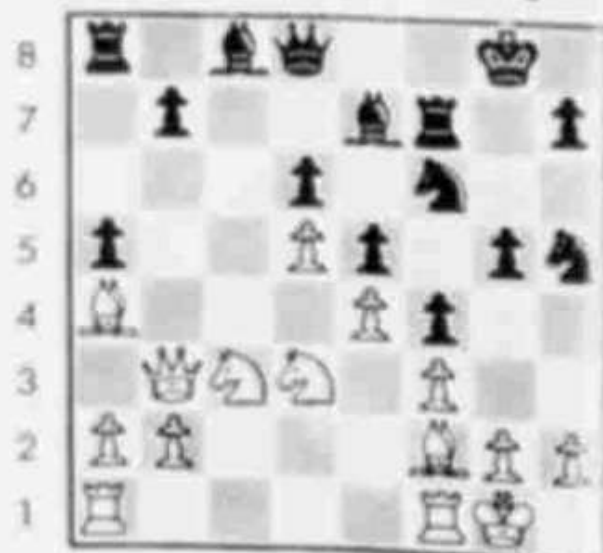
DIVISION V

Portsmouth E lost by 4-2 to Petersfield B when the B.C.F. returned the result, 5, R. M. Prince $\frac{1}{2}$, J. Terry $\frac{1}{2}$.

This week's diagram initiates the conclusion of one of my games played at Southampton during the summer B.C.F. tournament.

White — J. Stewart; Black — J.H.J. (see diagram. The continuation starts with Black's 18th move).

18. ... g4; 19. Bb6, Qf8; 20. Nb5, gxf3; 21. gxf3, Bh3; 22. Kf2, (If 22. Rf2 then Qh6; 23. Kh1, Rg7; 24. Rg1, Ng3 +; 25. hxg3, fxg3; with threats! White if 22. Rd1 (c1) (b1), then Qg7 +; 23. Kf2, Qg2 +; 24. Ke1, Nxe4! wins e.g. 25. fxe4, Bh4 +; 26. Bf2, Bxf2 +; 27. Nxf2, Qf1 +; 28. Kd2, Qxf2 +; (Regaining the material and maintaining the attack) Bxf1, 29. Rxf1, Kh8; 24. Nc7, Re8; 25. Ne6, Qh8; 26. Ke1, Ng7; 27. Bg1, Nxe6; 28. dxe6, Rg7; 29. Qxb7, Rcg8; 30. Qb6, Qh3!; 31. Bd1, Nxe4; 32. Nf2, Qsf1 +!; (Both sides had only minutes to the time control at move 40 which explains the following sketchy play) 33. Kxf1, Rxf1 +; 34. Ke2, Nxf2!; 35. Ba4, Nd1!; 36. Kd3, Ne3; 37. Qc7, R1g7; 38. Qxa5, Nf5; 39. b4, Nd4; 40. Bd7, Nxf3; 41. b5, Nxf2; 42. Bc6, Rg3 +; 42. Ke4, f3; and White resigned.



● Black to move

CHESS NOTES by J.H.J.

THE ANNUAL county quick-play teams tournament only attracted a field of eight teams to Sarisbury last Sunday. The small entry was convenient for an all-play-all competition and the form of scoring (three points for a won game and one for a draw) maintained the interest throughout.

Gosport entered the final round with consecutive wins against IBM (12-3); University A (10-4); Southampton, the defending champions (9-6); Portsmouth A (10-4); Portsmouth B (12-3) and Basingstoke (11-2). However, University A, despite their loss, had been demolishing the rest of the field and by the final round had reduced Gosport's lead to a single point.

This last round paired University A against Basingstoke whom they quickly crushed 15-0! Gosport were playing University B and after an early struggle established a 12-0 lead.

The last game to finish was on Board 1, and Martin Newbury with Black, slightly the worse for it and in trouble on time, was told not to accept a draw.

Fortunately the tension was too much for the White player who first dropped a piece before losing on time.

Result: 1, Gosport 79; 2, University A 78; 3, Southampton 67.

As well as team prizes there were awards for the best score on each board. These were won by 1, M. Yeo (Southampton) won 6, drawn 1; 2, J. H. Jones (Gosport) won 6, drawn 1; 3, D. E. Pye (Gosport) 7 wins; 4, R. Walker (University A) 7 wins; 5, F. S. Adam-Ali (Portsmouth A) and R. Walsh (Southampton) 6 wins.

To give a flavour of quick-play here is my round three encounter. The rate of play is half-an-hour each for the whole game.

White J.H.J., Black: 1. Stenhouse: 1, e4, d5(!); 2, exd5, Nf6; 3, c4, c6; 4, d4, exd5; 5, Nc3, Nc6; 6, Bg5, dxc4; 7, Ne5, 8, Nf3 (8.Qd4!); 9, Nxf3+, 9, Qxf3, Bg4; 10, Qf4, Qd7; 11, Bxc4, a6; 12, H3, Bh5; 13, O-O, Rc8; 14, Rfe1, h6; 15, Bxf6, gxf6; 16, d6, Rg8; 17, Nd5, Rg6; 18, Nxe7 (at this point in a "normal" game Black would resign but here tempus fugit); 19, Rxe7+, Qxe7; 20, dxe7, Kxe7; 21, Kf1!, Rg5; 22, Re1+, Kf8; 23, g4, Bg6; 24, h4, Rgc5; 25, Qxf6, Kg8; 26, Qxg6+ and Black resigned.

DIVISION I

Gosport A stand 3-1 against Manglers A after the conceded results 2, M. L. Newbury 1, D. Hannam 0; 3, S. P. Pezet 0, E. N. Holland 1; with the outcome dependent upon the vagaries of the B.C.F. panel.

DIVISION II

FAREHAM B ½, IBM A 2½: 1, D. E. Evans 0, J. G. Nicholson 1; 2, J. E. Arney ½, W. M. McDougall ½; 3, M. M. Street 0, J. F. Wheeler 1; 4, J. R.

Poulton v. P. J. Burns (a); 5, D. W. Coates v. B. S. Pratt (u); 6, T. A. Wykes v. G. D. Jefftha (a). Whoever wins this match should win the Division.

IBM B 4, PLESSEY 1-1, S. J. Smith v. P. A. Rayment (u); 2, J. M. Morris 1, D. G. Foale 0; 3, M. Jones ½, C. Wood ½; 4, A. J. R. Wilkinson 1, Default 0; 5, A. Ball 1, A. C. Rodger 0; 6, R. G. J. Hillier ½, P. Maddocks ½.

LEIGH PARK A 2½, COSHAM B 2½: A. J. Peters ½, A. D. Crossin ½; 2, S. J. Scott ½, G. Train ½; 3, N. G. LeFevre v. A. D. Smith (u); 4, J. N. Mortlock 0, M. R. Baker 1; 5, R. Smith ½, G. F. Abercrombie ½; 6, J. D. J. Gatt 1, A. F. Langley 0.

DIVISION V

PETERSFIELD B 5, PAULSGROVE B 1: 1, G. Gardner 1, M. Baxter 0; 2, B. Chambers 1, P. Sibley 0; 3, D. Collinson 0, M. Sammut 1; 4, P. Flack 1, J. Taylor 0; 5, D. Anslie 1, D. Murton 0; 6, V. Phillips 1, J. Sims-Mindry 0.

Post Office is no longer able to raise a team for this division and as they only played two matches all their results have been cancelled. Any outstanding matches will count as a bye.

The revised league table (after six rounds):

Division V					
	P	W	D	G	Pt
Petersfield B.....	5	3	1	17½	7
Portsmouth E.....	5	3	1	17½	7
Ermsworth B.....	5	2	1	15	5
Gosport D.....	4	1	3	12½	5
Paulsgrove B.....	5	0	0	9½	0

The third round of the P.D.L. Individual Championship went very much to form: R. H. Storr-Best 0, K. D. F. Gregory 1; R. V. Puchades ½, M. Jones ½; B. K. Maund v. S. J. Russell (u); D. A. Bloxson 1, M. R. Baker 0; B. V. Cochran 0, J. B. S. Cairns 1; W. Laxton 1, C. Wood 0.

Pairings for the next round are: Gregory (3) v. Puchades (2); Jones (2) v. Bloxson (2); Russell (1½+) v. Storr-Best (2); Cairns (1½) v. Maund (1+); Baker (1) v. Laxton (1); Wood (0) v. Cochran (0), and the limit-date is April 4.

This week by way of a change I leave you with an end-game position from Lund v. Nimzovitch (Oslo, 1921) and it is Black to play and win.



● Black to play

HAMPSHIRE stayed on course for a place in the National Quarter Finals of the Inter-County Championship, when they defeated Dorset in the penultimate match of the season.

Realising the significance of the match both sides were, on paper, quite strong. Nevertheless the final results were a 9½-6½ win in the first team competition, and a 9-7 win for the second team.

Local players scored 6½/13 and Hampshire had White on the even boards.

1. P. J. Rossiter 1, M. Cowling 0; 2. G. Oswald 0, S. C. Shutler 1; 8. J. H. Jones 1, I. C. Clark 0; 9. S. Pean 0, R. M. Pegg 1; 10. A. D. Crossin 0, M. J. Roth 1; 12. M. L. Newbury 1, J. F. Catchpole 0; 14. D. A. Evans 1, J. E. Crewe 0; 20. W. H. Silber ½, S. A. Crane ½; 22. A. D. Williams 0, M. A. Lewis 1; 25. M. C. Hagan 0, D. P. Lock 1; 30. A. D. Smith ½, D. J. Calliford ½; 31. R. C. Clark ½, M. G. Bond ½; 32. S. D. Le Febre 1, P. Brackner 0.

Graeme Oswald suffered a very rare loss when he failed to overcome the resolute defence of his opponent (the bad news) while I managed a rare win (the good news) with a little help. 1kr4r4q1pp/3pp3/1N1b4/8/3R3Q/1PP3PP/1K3R2 Black to move has 50 minutes. White 14 to reach the time-control at move 42. 23.

Re5!; 24. Rxd5!, Rxd5; (Now I offered a draw for tactical reasons! After 25. Re5; 26. Rd1, Rd8; 26. Qa3 with Qa5 to follow is double-edged. After 23... Rf5; White plays as above because 24. Rxf5, exf5; 25. Qxf5, Re8; could give Black chances).

25. C4, Re5?; (But I had seen what to do against this! White's moves now take four minutes. Black's 40) 26. Qb3, Kc8; 27. Rf7!, Rxb5; 28. Qf3!, Qxf7; 29. Qxf7, Re5; 30. b4, Rd8; 31. b5, Re5; 32. b6, Rd7; 33. Qe8+, Rd8; 34. Qa4! and Black resigned.

DIVISION I: As a consequence of played-on games, Fareham A lost by 2½-3½ to Cosham A.

3. D. Evans ½, A.F.C. Carter ½; 4. J. A. Coburn 0, A. D. Crossin 1; 5. D. W. Coates 0, C. W. Bryan 1.

DIVISION II: Leigh Park A drew their match with Cosham B, 3-3, when the board three game was resolved N. G. Le Febre ½, A. D. Smith ½. IBM B 5, Plessey 1 was the final score-line after this board 1 result: S. J. Smith 1, P. A. Rayment 0. The leadership battle continues and the game on board 5 D. W. Coates ½, B. S. Pratt ½; leaves Fareham B trailing I.B.M. A by one game to three.

DIVISION III: Gosport B 6, I.B.M. C 0. Gosport won by default as IBM were unable, at the last moment to raise a team.

DIVISION IV: Leigh Park B 2½, Manglers B 3½.

1. J. D. Gatt 0, A. G. Scoffin 1; 2. S. J.

Scott 0, K. Frisby 1; 3. R. Smith ½, S. Millard ½; 4. J. Sexton 1, R. Davies 0; 5. A. Charlwood 1, J. Brassell 0; 6. V. Agins 0, E. M. Holland 1.

Paulsgrove A 5, Fareham D 1.

1. P. McEvoy 1, M. J. Hockey 0; 2. C. Smith ½, H. A. Tradevossian ½; 3. S. Phillips 1, J. Craig 0; 4. D. Worsfold 1, S. Evans 0; 5. P. Sibley ½, M. Sygrove ½; 6. M. Baxter 1, N. Lusher 0.

Gosport C 4, Fareham D 2.

1. H. Golding ½, A. Harris ½; 2. A. Crouch ½, H. A. Tradevossian ½; 3. K. S. O. Smith 1, B. Massey 0; 4. C. Emery 1, S. Evans 0; 5. P. Groth 1, M. J. Hockey 0; 6. Mrs. S. Tovey 0, M. Sygrove 1.

This match was a ninth-round fixture played in advance at Fareham's request hence the change of venue.

DIVISION V: Emsworth B 4½, Gosport D 1½. 1. A. Quick ½, J. Penn ½; 2. A. Whitehead 0, A. Elbourne 1; 3. A. J. Vosper 1, A. D. Hemmens 0; 4. J. Hollis 1, I. M. Bartlett 0; 5. M. Levy 1, D. M. Officer 0; 6. A. Dann 1, P. A. Williams 0.

Gosport lost their unbeaten record at the same time as Ian Bartlett lost his 100 per cent. record. A good win for Emsworth.

The end-game that I left over was: 8/8/8/1p5r/p1p1k1pN/P2pBpP1/1P1K1P2/8 with Black to move.

White appears to have established an effective blockade, however, he was playing Nimzovitch (grandmaster, author of "My System," and an original thinker who promulgated the theory of "blockade") who was quite capable of circumventing his own concept.

1... b4!; 2. axb4, Rxb4!; 3. gxb4, g3!; (undermining the defence of f2 and indirectly the bishop on e3!); 4. fxb3, c3+; 5. bxc3, a3! (White will be powerless to prevent one of the Black pawns from queening) White resigns.

This week a study by B. Horwitz, 1873, with White to move and win. A little help from Richard II might not go amiss: "And humoured thus comes at last, and with a little pin bores through his castle-wall, and farewell King!"



CHESS NOTES

by J.H.J.

THE 15th Portsmouth Youth Festival will be held at the Isambard Brunel Middle School, Portchester Road, North End, in mid-April.

There will be two tournaments: the Phyllis Loe Cup for girls and young women under 18 (April 21, 1987) either resident in the city or in receipt of full-time education in the city, and the Sir William Dupree Cup for boys and young men under 21 (April 21, 1987) who are resident in the city.

Junior girls under 12 (September 1, 1986) will play on April 16, entry fee £1. The open girls competition runs from April 21-24, entry fee £2.

For boys there are three categories: Junior under 12 (September 1, 1986), entry fee £1, playing on April 16; Senior under 16 (September 1, 1986), entry fee £3, and open under 21 with an entry fee of £8. These last two age groups play during April 21-24.

Late entries will be surcharged £2 until the list of entrants is closed at April 10. A prize fund of £510 will be distributed to the first three places in all sections except the under 12 boys which will only have two prizes.

Entries and enquiries should be made of Mr. R. Prince on 818907 who is the Chief Controller of Play.

The study by Horwitz with White to move and win was: 8/kp2q 3/pR2r2 r2r/1Pp 5/7R/1P2Q2P/4K3/8.

1. Rbx6, Rxe6; (1. . . . Qxh4; fails to 2. b6+, K moves; 3. Re8, mate) 2. b6+, Kxb6; (Again 2. . . . Kb8 fails to 3. Rh8+, with mate to follow. After 2. . . . Rxb6; 3. Qxe7 White wins comfortably with the extra material) 3. Rh6! ("and with a little pin bores through his castle wall" was last week's clue) White wins.

DIVISION I

Gosport lost their 100 per cent. record when the B.C.F. Adjudication Panel handed down these results: 1, R. C. Noyce 0, K. D. F. Gregory 1; 5, M. D. Smith 0, A. G. Scoffin 1, which finalized the match details Gosport A 3, Manglers A 3.

Portsmouth A suffered a surprising defeat by Portsmouth B of 2½-3½ when played-on games were resolved.

1, G. Oswald ½, F. S. Adam Ali ½; 5, M. C. Hagan ½, B. K. Maund ½; 6, N. Purkiss 0, B. V. Cochran 1.

FAREHAM A 2½, PORTSMOUTH A 3½

1, T. R. S. Pavlovic 0, G. Oswald 1; 2, J. E. Arney ½, D. Spurgeon ½; 3, D. E. Evans ½, I. Bradley ½; 4, W. H. Silber ½, L. Powell ½; 5, J. A. Coburn ½, M. Hagan ½; 6, J. Poulton ½, N. Ruff ½.

GOSPORT A 4½, COSHAM A ½

1, R. C. Noyce ½, A. F. Brameld ½; 2, M. L. Newbury 1, S. Dean 0; 3, D. E. Pyc v. A. F. C. Carter (nj); 4, J. H. Jones 1, D. Gibson 0; 5, D. A. Blossom 1, A. D. Crossin 0; 6, S. P. Pezet 1, C. W. Bryan 0.

Gosport A are the new league champions as no team is able to equal their present match total even though two rounds still remain in this season's competition.

	P	W	D	L	Pts
Gosport A	6	7	1	32	19
Portsmouth A	6	1	0	26½	10
Fareham A	6	4	0	26	8
Cosham A	6	4	0	22	8
Manglers A	7	1	1	26	3
Portsmouth B	7	1	0	19½	2

DIVISION II

Fareham B lost their 100 per cent. record which they finally lost by 1½-4½ to IBM A when the outstanding games were resolved.

4, J. R. Poulton ½, P. J. Burns ½; 6, T. A. Wykes 0, G. D. Jefftha 1, by the B.C.F. Panel.

As can be seen from the table IBM A are the slight favourites as candidates for promotion.

	P	W	D	L	Pts
IBM A	7	6	0	31	12
Fareham B	7	6	0	26½	12
IBM B	7	2	1	18½	5
L. Park A	7	2	1	15½	5
Philly	7	2	0	15½	4
Cosham B	7	1	2	11	4

DIVISION III

PETERSFIELD A 4½, PORTSMOUTH C 1½: 1, S. Le Blancq 0, M. Hagan 1; 2, H. Storr-Best 1, N. Ruff 0; 3, G. Gardner 1, P. Smith 0; 4, B. Chambers ½, M. Newbury ½; 5, G. Dent 1, W. Laxton 0; 6, P. Flack 1, R. Prince 0.

FAREHAM C 3½, PORTSMOUTH D 1½

1, J. Monk v. F. S. Adam-Ali (a); 2, A. Chondler ½, S. Kent ½; 3, R. C. Clark 0, B. K. Maund 1; 4, A. F. Stroud 1, N. Seville 0; 5, H. Tadevossian 1, P. Rogers 0; 6, M. J. Butler 1, D. Jeffery 0.

	P	W	D	L	Pts
Gosport B	7	6	1	29½	11
Petersfield A	7	4	1	22	9
Portsmouth C	7	4	1	22½	7
Fareham C	7	4	1	20	7
Portsmouth D	7	2	0	18	6
IBM C	7	0	0	11	0

DIVISION IV

MESWORTH A 4, GOSPORT C 1: 1, G. Vosper 1, H. Golding 0; 2, R. Perry 0, A. Crouch 1; 3, A. Quick 1, K. S. O. Smith 0; 4, K. Hyman 1, P. Groth 0; 5, B.



White to move

Walker 1, Mrs. S. Tovey 0; 6, A. Whitehead v. R. Strong (a).

	P	W	D	L	Pts
Fareham A	7	6	0	26	12
Mesworth A	7	5	1	25	11
Gosport C	6	4	0	26½	8
Manglers B	7	3	1	19½	7
L. Park B	7	2	0	18	4
Fareham D	8	1	0	23	2

The top of the table clash in the next round could well resolve the championship issue in this division.

The diagram this week is a study by H. Rinck (1911) with White to move and win.

Some advice from the Rev. Charles Dodgson (Lewis Carroll) concerning the "Hunting of the Snark" could offer some help. . . "and seek it with care; you may hunt it with forks and hope . . ."

CHESS NOTES BY J.H.J.

HAMPSHIRE'S challenge to qualify for the National play-offs never materialised when they met Gloucestershire at Frome in the final county match of the season. Although both teams were about the same strength (according to the B.C.F. grading scheme), Hampshire failed to realise their potential and finally went down in both matches: the first team by 10-5 (with one adjudication which, at best, is a draw); the second by 6½-7½ (and the two unfinished games offer no more than draws).

Local players only scored 3½/13 and Hampshire had White on the event boards. 1, P. J. Rossiter ½, A. J. Mordue ½; 5, A. F. Brameld ½, S. D. Dilleigh ½; 7, R. C. Noyce ½, C. J. A. Jones ½; 8, J. H. Jones ½, C. Copeland ½; 9, S. Dean 0, A. Easton 1; 11, M. L. Newbury ½, S. R. Clark ½; 12, A. D. Crossin 0, M. E. Burn 1; 13, S. P. Pezet v. P. J. Meade (a); 14, D. A. Evans, I. E. Newman 0; 19, W. H. Silber 0, J. J. Carr 1; 22, M. R. Baker 0, R. J. Dixon 1; 24, A. D. Williams v. S. W. Maggs (a); 27, M. L. Hagan 0, J. Knight 1.

The local League Secretary, John Wheeler (IBM), plays county chess for Devon! He notes that since Devon beat Dorset 10-6 and 11-5 (while we were losing) they win both sections of the W.E.C.U. County Championship and along with Gloucestershire (the runners-up in both sections) they will represent the West of England in the final stages of the this year's National competition. Good luck, John!

Last week's position was 8: 3p3B; 1n2P2r; 8: 8; 7k; R4P2; 7K, with White to move and win.

1. e7? (insufficient would be 1. Bf5+, Kh4; (2. e7, Rh8); 2. exd7, Kg5+; 3. Kg2, Rd6! and Black draws) Kg4+! (if instead 1. Re6; then the first fork 2. Bf5+ would seal Black's fate); 2. Kg2, Re6; (now White must find a way to close the e-file); 3. Re2!, Rxe2; 4. Be4!, Rxe4; 5. ♔+ (Carroll's advice was to "hunt it with forks and hope" and here the Black King and Rook have been fixed onto the lines of the White pawn). White wins.

DIVISION I

PORTSMOUTH B 1½, MANGLERS A 2½; 1, A. Daley ½, K. D. F. Gregory ½; 2, S. Kent v. D. Hannam (u); 3, F. v. Adam-Ali 0, E. N. Holland 1; 4, B. Sweeney ½, M. Fowler ½; 5, L. Cunningham ½, K. J. Frisby ½; 6, B. K. Maund v. R. Davies (u). The result of this match should resolve the relegation battle.

DIVISION II

PLESSEY ½, IBM A 3½; 1, D. W. Pownall 0, J. G. Nicholson 1; 2, P. A. Rayment v. W. M. McDougall (u); 3, D. G. Foale 0, J. F. Wheeler 1; 4, C. Wood v. R. E. Hartley (u); 5, A. C. Rodger ½,

B. S. Pratt ½; 6, J. B. S. Cairns 0, P. J. Burns 1.

IBM B 2½, LEIGH PARK A 3½; 1, J. M. Morris ½, A. J. Peters ½; 2, S. J. Smith 1, N. G. LeFevre 0; 3, M. J. Jones 0, S. D. LeFevre 1; 4, S. Prince 1, J. Mortlock 0; 5, A. J. Ball 0, R. Smith 1; 6, R. G. J. Hillier 0, J. Gatt 1.

FAREHAM B 1½, COSHAM B 1½; 1, J. Poulton v. A. D. Crossin (u); 2, T. A. Wykes ½, G. Tram ½; 3, D. Coates v. M. R. Baker (u); 4, A. D. Harris v. A. D. Smith (u); 5, J. Monk 1, G. F. Abercrombie 0; 6, C. Fairall 0, A. F. Langley 1.

DIVISION III

Fareham C beat Portsmouth D 3½-2½ after the B.C.F. adjudication panel handed down the result 1, J. C. Monk 0, F. S. Adam-Ali 1.

DIVISION IV

Emsworth A ran out 4½-1½ winners over Gosport C after the B.C.F. panel gave the decision 6, A. Whitehead ½, R. Strong ½. I understand that Gosport are not satisfied with the standard of adjudications (and not simply the results handed down to their own club) and may well launch an appeal. It strikes me that the name of the adjudicator should be appended to each result returned from the panel so that in subsequent seasons a League could ask for an "adjudicator," who consistently hands down contentious decisions to be removed from the panel. A similar type of "assessment" occurs in the Football League where clubs give the referee a rating for his "handling" of the match and the management are at pains to regrade "poor" performers. Doubtless our own League should consider if any action is required providing that there is sufficient feeling generated by the "problem."

This week a position by A. A. Trotsky, 1897, in which White has a material superiority that appears to be offset by Black's threat to play ... g2; however, it is White to move, but what will the result be?

White to move



Chess notes by J.H.J.

KEITH GREGORY, the Controller of the Cole competitions (the League quick-play K.O. tournaments), has provided me with the latest batch of results:

Cole Cup, semi-finals: Portsmouth B 1, IBM A 4; Manglers 2, Cosham A 3.

Cole Plate, quarter-finals: Paulsgrove A 3, Paulsgrove B 2; Fareham C 5, IBM C 0 (by default); IBM B 5, Post Office 0 (by default); Portsmouth A 3, Fareham A 2.

The draw for the semi-finals has kept the strongest teams apart and if the results to to form then a good final should be the outcome.

Portsmouth A v. Fareham C; IBM B v. Paulsgrove A and the limit date is March 15.

Last week I left you with a position by Troitsky: 4B3; 8; 6N1; 5p1; 1r4p1; 6pk; 7b; 4K2Q; with White to move, that leads to a neat conclusion: 1, Bc6!! (White has to stop 1... g2; no matter what the apparent cost)... Rb1+ (insufficient 1.

Rb2; 2, Bg2+; Rxc2; 3, Nf4+); 2, Kc2, Rxc1; 3, Bg2+!!; Kxc2; 4, Nf4+; Kg1 (so White's immolation has nearly created a self-blockade of Black's pieces that only requires one tempo to close the final square); 5, Ke1!; g2; 6, Ne2+ Mate!

DIVISION I

GOSPORT A 4½, COSHAM A 1½ was the result after the played-off game 3, D. E. Pye 0, A. F. C. Carter 1 was resolved.

Portsmouth B are tying their match with Manglers A 2½-2½ with the result 6, B. K. Maund 1, R. Davies 0.

DIVISION II

PLESSEY ½, IBM A 4½ with IBM extending their lead with the result 4, C. Wood 0, R. E. Hartley 1.

DIVISION III

FAREHAM C 4, GOSPORT B 2: 1, J. Monk 1, P. Eales 0; 2, A. Chandler 1, A. Crouch 0; 3, A. F. Stroud 1, C. T. Emery 0; 4, M. J. Butler ½, J. Penn ½; 5, R. C. Clark 0, H. Golding 1; 6, H. Tadevossian ½, W. F. Isbell ½.

Gosport B lost their undefeated record when they fielded a team lacking four first choice players, nevertheless Fareham played very well as they won on the top boards thereby destroying unbeaten records of their opponents (Eales, Emery 100 per cent., Crouch one draw).

PETERSFIELD A 5, PORTSMOUTH D 1: 1, Simon Le Blancq 1, F. S. Adam-Ali 0; 2, H. Storr-Best 1, B. K. Maund 0; 3, G. Gardner 1, D. Jeffery 0; 4, G. Dent 0, J. Steward 1; 5, B. Chambers 1, P. Rogers 0; 6, P. Flack 1, E. Nancarrow 0.

Clearly the last match of the season between Petersfield A and Gosport B will resolve this division especially if Gosport manage to lose their penultimate match.

IBM C 2½, PORTSMOUTH C 2½: 1, A. Ball 1, L. Powell 0; 2, M. Jones v. N.

Purkis (a); 3, G. Benner 0, P. Smith 1; 4, A. Wilkinson 1, M. Newbury 0; 5, T. Pitton ½, R. Stafford ½; 6, G. Mason 0, W. Laxton 1.

I made a faulty transcription of the results of Portsmouth C and D when I last issued the divisional table so here is the amended (and now hopefully correct) table. The IBM C-Portsmouth C unfinished match is not included.

	P	W	D	G	Pt
Gosport B.....	8	6	1	31½	13
Petersfield A.....	8	5	1	27	11
Portsmouth C.....	7	4	1	24½	9
Fareham C.....	8	4	1	24	9
Portsmouth D.....	8	2	0	21	4
IBM C.....	7	0	0	11	0

DIVISION IV

GOSPORT C 3½, MANGLERS B 2½: 1, H. Golding 0, A. G. Scoffin 1; 2, A. Crouch 0, M. Folwer 1; 3, K. S. O. Smith ½, K. J. Frisby ½; 4, C. T. Emery 1, S. Millard 0; 5, P. Groth 1, R. Davies 0; 6, Mrs. S. Tovey 1, J. Brassell 0.

LEIGH PARK B 2½, FAREHAM D 3½: 1, J. D. Gatt 0, H. Tadevossian 1; 2, S. J. Scott ½, B. Massey ½; 3, R. Smith ½, S. Evans ½; 4, J. Sexton 1, C. Lusher 0; 5, A. Charlwood ½, M. Sygrove ½; 6, V. Agins 0, N. Lusher 1.

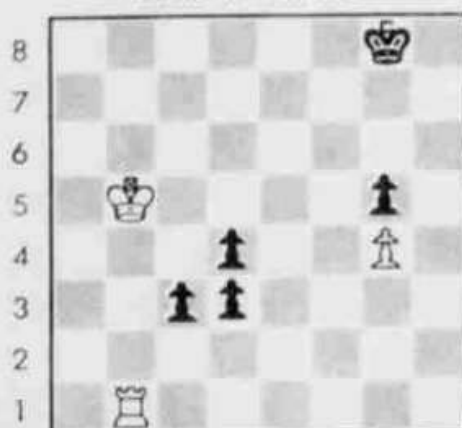
DIVISION V

GOSPORT D 4, PORTSMOUTH E 2: 1, P. Groth 1, J. Steward 0; 2, A. Crouch 1, W. Laxton 0; 3, J. Penn 1, R. Prince 0; 4, A. J. Elbourn 0, F. Guy 1; 5, K. S. O. Smith 0, P. Rogers 1; 6, A. D. Hemmens 1, E. Nancarrow 0.

This year local players will have few excuses for missing the County A.G.M. which will be held at the Henry Cort Community School, Hillson Drive, Fareham. The meeting will start at 7.30 and all members of the Association are cordially invited to attend.

Superficially this week's study by H. Weenink, 1927, looks an easy win for Black. After all, the White rook is already opposed by passed pawns on the sixth rank (which even quite inexperienced players "know" is a win for the pawns), so you have to find the draw for White who has the move!

White to move



a b c d e f g h

Chess notes by J.H.J.

SINCE I have heard no murmurs of discontent I must assume that the reader(s!) of this column favour the general presentation and content. However, it would greatly assist me to have a few more game-scores for publication, otherwise I shall have to inflict on you (yet) another of my own!

Games submitted to me (103, Queens Road, Gosport PO12 1LG) should be about 30 moves in length and light notes may be appended. Any game played at quick-play should be clearly indicated while it would be helpful to know the source of other material. Please — no off-hand games (everybody is brilliant at skittles — sometimes!).

Last week I left you with 6k1; 8; 8; 1K4p1; 3psP1; 2pp4; 8; 1R6 by Weenink with White to move and draw.

Certainly, White has no chance against the pawns (e.g. 1. Kc4, c2!; 2. R moves, d2, when Black will Queen a pawn and win) so he must construct some action against the Black King.

1. Kc6!; d2; (no better 1. . . ., c2; 2. Re1!; d2; 3. Re8+; Kf7; 4. Kd7! none does the attempt to escape by 1. . . ., Kf7; fare any better e.g. 2. Kd7!; 3. Re1! or here 2. . . ., d2; 3. Rf1+; K moves; 4. Ke7!) 2. Kd7, c2; (2. . . ., Kg7; 3. Ke7!; c2; 4. Rf1, transposes) 3. Rb8+; Kf7; 4. Re8! when Black is trapped by the imminent perpetual check (1/2:1/2).

DIVISION I

FAREHAM A 2, GOSPORT A 3: 1, T. R. S. Pavlovic 1/2, R. C. Noyce 1/2; 2, W. H. Silver 1/2, M. L. Newbury 1/2; 3, J. D. Eva 0, J. H. Jones 1; 4, D. A. Evans v. S. P. Pezet (u); 5, J. A. Coburn 0, D. J. White 1; 6, J. Poulton 1, D. A. Bloxson 0.

PORTSMOUTH A 5, MANGLERS A 1: 1, G. Oswald 1, K. D. F. Gregory 0; 2, D. Spurgeon 1, Default 0; 3, I. Bradley 1, D. Hannam 0; 4, R. Puchades 1, A. G. Scoffin 0; 5, M. Hagan 0, M. Fowler 1; 6, M. Winterbotham 1, K. J. Frisby 0.

COSHAM A 3, PORTSMOUTH B 1: 1, A. F. Brameld 1/2, A. Daley 1/2; 2, S. Dean 1, F. S. Adam-Ali 0; 3, A. F. C. Carter 1/2,

H. Vernon 1/2; 4, D. Gibson 1, B. Sweeney 0; 5, G. Train v. S. Kent (u); 6, C. W. Bryan v. B. V. Cochran (u).

DIVISION II

PLESSEY 1 1/2, IBM A 4 1/2 was the final result after the last played-on game was resolved. 2, P. A. Rayment 1, W. McDougall 0. Fareham B have moved into a 3-2 lead over Cosham B when these game results were obtained. 3, D. W. Coates 1, M. R. Baker 0; 4, A. D. Harris 1/2, A. D. Smith 1/2. The board 1 game between J. Poulton and A. Crossin is adjourned for a second time.

DIVISION IV

PAULSGROVE A 2, EMSWORTH A 3: 1, P. McEvoy 1/2, M. Body 1/2; 2, C. Smith 0, G. Vosper 1/8; 3, S. Phillips v. R. Perry (a); 4, D. Worsfold 1/2, K. Hyman 1/2; 5, P. Sibley 0, A. Quick 1; 6, M. Baxter 1, B. Walker 0.

DIVISION V

PETERSFIELD B 2 1/2, EMSWORTH B 1 1/2: 1, G. Gardner 0, A. Quick 1; 2, B. Chambers 1, A. Whitehead 0; 3, D. Ainslie 1/2, D. Wilson 1/2; 4, P. Flack v. J. Delaney (a); 5, D. Collinson v. D. Pollard (a); 6, V. Phillips 1, P. Britt 0.

Five members of the Gosport club play in the Southampton League so it was only a matter of time before there was a clash. White: R. C. Noyce (University A), Black: S. P. Pezet (Sarisbury A). 1. e4, c5; 2. Nc3, Nc6; 3. f4, a6; 4. Nf3, e6; 5. d4, Cxd4; 6. Nxd4, d6; 7. Be3, Nf6; 8. Be2, Be7; 9. Qd2, Qc7; 10. Bf3, O-O; 11. O-O, Bd7; 12. g4, Nxd4; 13. Qxd4, Rfd8; 14. g5, Ne8; 15. Qd3, Bc6; 16. a4, b6?; (16. . . ., b5!; with the threat b4 and d5. If White tries 17. a5, then Black regroups by Qb7; 18. Bb6, Rd7; and continues with Bd8 or d5 according to White's further action); 17. f5!, d5?; 18. exd5, exd5; 19. Nxd5, Bxd5; 20. Bxd5, Be5!; (and this would have been an excellent counter had Black's pawn been on b5 instead of b6); 21. c4, Rb8; (21. Qe7;) 22. Rf2, Qe7; 23. Bxc5, Qxc5; 24. Re1, Kh8; 25. Qe3, Qc7; 26. Qe7!, Qxe7; 27. Rx37, f6?; 28. g6, Nd6; 29. Rf3!, Re8; 30. Rh3!, (1:0).

CHESS NOTES By J.H.J.

THE FINAL of the Mike Cole Cup (the league quick-play k.o. championship) proved to be as close and tense an encounter as the elimination matches indicated; IBM had scored 18-2 and Cosham 16-4.

In the league, IBM have been making a concerted effort to regain promotion to the first division and, at this time, head the second division. Meanwhile, Cosham have had an indifferent season in division one and after four consecutive league championships, languish in mid-table.

Arthur Brameld has been kind enough to give me a report on the match (played at Manglers). IBM White on boards 1, 3 and 5 . . .

Board 3 was an even game and the first to finish (½-½).

On top board, Black went into a slightly inferior variation up to move 17 but subsequently won a pawn. As the match appeared to be very favourable to Cosham (three pawns up on board 2, winning board 4 and equal on the bottom board) a draw was conceded (1-1).

Curious things happened on board 2 (remember — Cosham pawns ahead) when White blundered into a mate in his opponent's time trouble (1-2 to IBM).

White was well up on material on board 4 but had to win with about 30 seconds left on his clock. Fortunately, this he managed! (2-2).

The last game transferred from a drawish R + Ps ending into a superior K + Ps ending but at the critical junction a number of pawn exchanges (instead of King moves = win) led to a drawn game (2½-2½).

Details — COSHAM A 2½, IBM A 2½: 1. A. F. Brameld ½, G. Nicholson ½; 2. S. Dean 0, W. M. McDougall 1; 3. A. F. C. Carter ½, J. F. Wheeler ½; 4. D. Gibson 1, J. M. Morris 0; 5. C. W. Bryan ½, R. E. Hartley ½.

To resolve the match the elimination rule applied. Congratulations to the Cole Cup Champions, IBM A!

DIVISION I

FAREHAM A 3, GOSPORT A 3 was the outcome after the last game was completed. 4. D. A. Evans 1, S. P. Pezet 0.

Meanwhile, Cosham A ran out useful 4½-1½ winners over Portsmouth B when played-on games were finished as 5. G. Train 1, S. Kent 0; 6. C. W. Bryan ½, B. Cochran, but all was not as it seemed for Geoff Train went into the second session a piece down (yet won!) while Colin Bryan the exchange ahead could not capitalize his advantage.

The League Committee were required to arbitrate in the match Portsmouth B v. Manglers A and handed down the decision, 2. S. Kent 0, D. Hannham 1, which gave Manglers a 3½-2½ win and also ensured that Portsmouth would be relegated.

My own opinion, based upon the same information as that available to the committee, is that the game should have gone for adjudication but this simplistic solution was probably beyond the group mind. The fact that the issue affected the relegation situation was academic; after all nearly all games at the end of the season must have some influence on league positions. Let's hope the committee were at pains to stress that this decision would not be cited as future precedent in similar cases!

DIVISION II

FAREHAM B 3, COSHAM B 3 was the final result after the long running game was resolved, 1. J. R. Poulton 0, A. D. Crossin 1. With this result Cosham moved out of the relegation position and also ended Fareham's hope of winning the division.

COSHAM B 2½, PLESSEY ½: 1. G. Train ½, D. W. Pownall ½; 2. R. R. Carter 1, Default 0; 3. M. R. Baker v. C. Wood (u); 4. A. D. Smith 1, A. C. Rodger 0; 5. G. F. Abercrombie v. J. B. S. Cairns (u); 6. A. F. Langley v. P. Maddocks (u).

IBM B 1, IBM A 5: 1. S. J. Smith 0, J. G. Nicholson 1; 2. J. M. Morris 0, W. M. McDougall 1; 3. A. J. R. Wilkinson ½, J. F. Wheeler ½; 4. S. M. Prince 0, R. E. Hartley 1; 5. M. Jones 0, P. J. Burns 1; 6. A. J. Ball ½, B. S. Pratt ½.

LEIGH PARK A 1½, FAREHAM B 3½: 1. A. J. Peters 1, J. Poulton 0; 2. S. D. LeFevre v. T. A. Wykes (u); 3. N. G. LeFevre 0, J. Eva 1; 4. J. N. Mortlock ½, M. Street ½; 5. R. Smith 0, D. Coates 1; 6. J. D. J. Gatt 0, A. Harris 1.



White to move

Chess notes by J.H.J.

LAST week the study by Horwitz, with White to move and win, was 8/8/8/8/8/1Q3pp/p6p1/k6K1.

Clearly White has two problems: avoid the stalemate that may arise once Black's f and g pawns are removed, and force a situation in which black may be mated.

Since Black will (eventually) promote a pawn at g1, White must start by controlling that square. 1. Qb6!, f2+; 2. Kxg2, f1=Q+; 3. Kxf1, g2+; 4. Ke2!, g1=Q; 5. Qxg1+, Kb2; All forced!

Now White must operate against the Black King and the imminent promotion of the pawn at a2. 6. Kd2!, a1=Q; 7. Qb6+, Ka3; (7... Ka2; fails to the quiet move 8. Kc2!) 8. Qa5+, Kb2; 9. Qb4+, Ka2; 10. Kc2! and again Black is left with no resource (1:0).

The Cole Plate semi-finals went very much as expected. Paulsgrove A 3, IBM B 2 and Portsmouth A 4½, Fareham C ½. This leaves the final to be contested by Portsmouth A (who as likely runners-up in the League Division I are very much the favourites) against Paulsgrove A (who, as probable winners of the League Division IV, are the ante-post underdogs) and this match must be concluded by the end of May.

If you are tactically inclined then the Marshall Gambit can be a powerful weapon under any time conditions: at quick-play it can (on occasion) be irresistible.

White: D. A. Bloxson. Black: J.H.J. 1. e4, e5; 2. Nf3, Nc6; 3. Bb5, a6; 4. Ba4, Nf6; 5. OO, Be7; 6. Re1, b5; 7. Bb3, OO; 8. c3, d5!?! (Played by F. G. Marshall against J. R. Capablanca in Round 1, New York, 1918. Marshall had kept his preparation secret since being drubbed 8-1 (with 14 draws) in his match with Capablanca in 1909.) 9. exd5, Nxd5; 10. Nxe5, Nxe5; 11. Rxe5, Nf6; 12. d4, (The seminal game continued 12. Re1?, Bd6; 13. h3, Ng4!; 14. Qf3!, Qh4; 15. d4!, Nxf2; 16. Re2?, Bg4; better 16... Ng4!; 17. Re8, Nf6; 18. Rxf8+ . Kxf8; 19. Nd2, Rb8; 20. Nf1, = Tartakover and after some alarms and excursions White won in 36 moves) Bd6; 13. Re2, (13. Re1, Ng4; 14. h3, Qh4; 15. Qf3, Nxf2; 16. Bd2, Bb7; 17. Qxb7, Nd3; 18. Re2, Qg3; 19. Kf1, Qh2; 20. g4! proves insufficient for Black) Bxh2+!?! (Capablanca gave 13... Nh5; 14. Qd3, Qh4; 15. g3, Qh3; 16. Bd5!, (which is why later analysts considered 11... c6 to be superior) Bf4; 17. Qe3, Rad8; 18. Bg2, with advantage to White) 14. Kxh2, Ng4+; 15. Kg3?, (15. Kg1!) Qd6+; 16. Bf4, (16. f4?, Qh6;) Qg6; 17. Kf3, Bb7+; 18. d5, Rfe8; 19. Rxe8+, (19. Nd2, Qh5;) Rxe8; 20. Bc2, Qh5; 21. Kg3, Qh2+; 22. Kxg4, (22. Kf3, Ne5+;) Qxg2+; 23. Bg3, (23. Kh4, Bc8;) f6; 24. Bf5, Re5; 25. Be6+, Kf8; (25... Rxe6; probably leads to a win 26. dxe6, h5+; 27. Kh4, g5+; 28. Kxh5, Bf3+;) 26. Nd2, (26. Qf3?, h5+;) Bxd5; 27. Bxd5, h5+; 28. Kh4, g5+; 29. Kxh5, Qh3+; 30. Kg6, Qf5+; 31. Kh6, Re7; (0:1).

CHESS NOTES

by J.H.J.

THE LEAGUE Secretary, John Wheeler (IBM), took care to create a hiatus in the fixture-list so that no matches were scheduled over the extended holiday period of Easter through May Day. This was probably a move welcomed by the members especially as the weather has been so clement. Also it explains the recent lack of match results . . . the league has not finished (as some thought!)

DIVISION II

Cosham B ran out easy 4½-1½ winners over Plessey when these played-on games were resolved.

1. M. R. Baker ½, C. Wood ½, 5. G. F. Abercrombie 1, J. B. S. Cairns 0; 6. A. F. Langley ½, P. Middlelocks ½.

Current leaders: IBM A, P9 W8 L1 G40½ (1) Pt16.

DIVISION III

The B.C.F. Adjudication Panel handed down the result 2. M. Jones ½, N. Purkis ½ which produced a drawn match, 3 all, between IBM C and Portsmouth C. Current leaders: Gosport B P8 W6 D1 L1 G 31½ Pt13.

DIVISION IV

Paulsgrove A finally lost 2-4 to Emsworth A when the B.C.F. Panel gave their decision, 3. S. F. Phillips 0, R. Perry 1; Current leaders, Emsworth A P8 W6 D1 L1 G24½ Pt13 with Paulsgrove A trailing by a single point.

DIVISION V

Petersfield B and Emsworth B drew 3-3 as a consequence of these adjudicated results, 4. P. Flack ½, J. Delaney ½, 5. D. Collingson 0, D. Pollard 1.

Emsworth B 3½, Portsmouth E 2½.
1. A. Quick 0, S. Cragg 1; 2. A. Whitehead ½, M. Newbury ½, 3. D. Wilson 1, J. Steward 0; 4. D. Pollard 1, R. Prince 0; 5. J. Delaney 0, P. Rogers 1; 6. M. Levy 1, W. Laxton 0.

Current leaders: Emsworth B P8 W4 D2 L2 G26 Pt10 with Petersfield B half a game point behind but with a match in hand.

The results of round four of the P.D.L. Individual Championship were: K. D. F. Gregory 1, R. V. Puchades 0; M. Jones 1, Default 0; S. J. Russell 0, R.

H. Storr-Best 1; J. B. S. Cairns ½, B. K. Maund ½; M. R. Baker 1, W. Laxton 0; C. Wood 1, B. V. Cochran 0.

Round five, for which the limit-date is 23 May, has the following pairings: Jones (3) v. Gregory (4); Storr-Best (3) v. Baker (2); D. A. Bloxson (2) v. Cairns (2); Maund (1½+) v. Puchades (2); Wood (1) v. Russell (1½+), and Laxton (1) v. Cochran (0).

The British Chess Federation issue a weekly magazine prosaically titled "News Flash" which, due to recent exigencies, only appears every three (1½) weeks. It contains information not only up to National level, but also quite detailed news from abroad. Using this source here is a game from the recent Zone 3 (Warsaw group 2) tournament.

White: J. Pinter (G. M. Hungary, 2570), Black: A. Negulescu (I. M. Rumania, 2395).

1. d4, d5; 2. c4, dxc4; 3. Nf3, c5; 4. e3, Nf6; 5. Bxc4, e6; 6. 0-0, cxd4; 7. exd4, Be7; 8. Ne3, 0-0; 9. Re1, a6; 10. a4, Nc6; 11. Bg5, Nb4; 12. Ne5, Nfd5; 13. Bd2, Nb6?; 14. Bh3, Qxd4; (Black needs to swipe this pawn to compensate for his wretched position) 15. a5, Nd7; (15. ... Nfd5?) 16. Re4, Qc5; 17. Nxd7, Bxd7; 18. Rxb4?, Qxb4; 19. Nd5!, Qh4?; (10. ... Qd6?; 20. Bb4, doesn't save the bishop, but 19. ... Qd4!; immediately would have later given Black back-rank mating possibilities) 20. g3, Qd4; 21. Nxe7+, Kh8; 22. Be3, Qxd1+; 23. Rxd1, Bb5; 24. Rd4!, Rfe8; 25. Bb4, Rad8; 26. Rf4, f6; 27. Bxe6, (without 20. g3, White would have to lose a tempo securing his first rank) Rxe7; 28. Bxe7, Rd1+; 29. Kg2, Bcb+; 30. Kh3, Re1, (see diagram. So Black seems to have got back into the game); 31. Rxh6!, (but White has other ideas!) h6; 32. Rf8+, Kh7; 33. Bf5+, g6; 34. Bb4, Re5; 35. Bc3!, (1.0) Pinter went on to win the event with 7½/11 and thereby qualified for the Interzonal stage of the current cycle of World Championship tournaments.



CHESS NOTES

by J.H.J.

DURING the coming weeks I shall float several ideas concerning the conditions of play in the Portsmouth and District League. These ideas (not always my own!) will encompass the issue of playing-on versus adjudication; promotion and relegation; the size of teams and that hoary perennial the rate of play.

Should you wish to become involved in this (debate?) or any other similar topic then I would be glad to hear your views and I will give appropriate credit for any quotes I use.

To start the exchange my first suggestion concerns the size of teams. Sides in the top two divisions should consist of eight players (even nine, or 10 might be manageable but then the number of "nominated" players would need to be adjusted) and other teams might be increased to seven (my prime intention to enlarge the "senior" teams but the arguments could equally apply throughout the league).

Undoubtedly chess (playing) is on the increase mainly due to better media exposure. In the case of Gosport this had led to a (near) doubling of membership in the past year. Enlarging the top teams will expose more players to a higher standard and hopefully would lead to an improve-

ment in playing ability. Transport should prove no barrier it is as easy to get eight to a match as six (two cars!).

The only real problem that I see is a club having two or more teams in the top divisions as the current rules would force all the players within their team i.e. eight A's can't play for B and vice versa. In this situation I would suggest say five (or six!) "nominated" players and simply allow the others to float between A and B.

Any thoughts that you would like to offer on this (or other) suggestion(s) should be sent to 103, Queens Road, Gosport PO12 1LG.

DIVISION II

Leigh Park A closed the gap in their match with Fareham B to 2½-3½ as a result of the played-on game 2, S. D. LeFevre 1, T. A. Wykes 0.

DIVISION III

FAREHAM C 2½, PETERSFIELD A 3½: 1, J. Monk 0, S. Le Blancq 1; 2, A. Chandler 0, H. Storr-Best 1; 3, A. Stroud ½, G. Gardner ½; 4, M. Butler 1, B. Chambers 0; H. Tadevossian 0, P. Flack 1; 6, J. Eva 1, P. Mayer 0.

PORTSMOUTH D 4, IBM C 2: 1, S. Kent 1, G. Jeftha 0; 2, B. K. Maund 1, A. Wilksinson 0; 3, S. Cragg 0, A. Picton 1; 4, D. Jeffery 0, R. Cole 1; 5, J. Steward 1, M. Passant 0; 6, P. Rogers 1, Default 0.

GOSPORT B 4, PORTSMOUTH C 0 is the current state of the match but I have no details to hand.

DIVISION IV

EMSWORTH A 2½, MANGLERS B 2½: 1, M. body 0, A. G. Scoffin 1; 2, G. Vosper 1, Default 0; 3, R. Perry 0, K. J. Frisby 1; 4, K. Hyman ½, S. Millard ½; A. Quick 1, R. Davies 0; B. Walker v J. Brussell (a).

John Peters, who acts as the grading officer for our local area (but whose work pulls in results from all over the country!) has asked me to mention that May 15 is the deadline for game-results to reach him. Clubs anxious to have their Championship tournaments graded should send the details immediately to John as any late information will only be processed at leisure after an imminent extended holiday (which means your grade may not be accurate or ready for satisfactory processing by the national computer!).

This week's study by J. Rinck, 1908, is not too difficult and it is White to move and draw.

White to move.



Chess notes by J.H.J.

LAST WEEK, I left you with 3N4; 8; 3k1P2; 8; 8; 2p2plp; 7P; 7K; and it was White to move and draw.

Clearly White has to gain time to bring the Knight back for the defence to be successful. 1, f7, Ke7 (as the f-pawn will queen with check Black has no real alternative); 2, Ne6!, Kxf7; 3, Ng5+, Kf6; 4, Nxf3!, c2 (otherwise 5, Nd1/c2); 5, Ng1! (1/2:1/2).

If 5, . . . , c1=Q; or 5, . . . , c1=R; then White is stalemated while after other promotions the simple 6, Nxf3 ensures the draw. A king move allows 6, Ne2 which also guarantees a draw.

DIVISION I

GOSPORT A 3½, PORTSMOUTH A 1½; 1, R. C. Noyce v. G. Oswald (u); 2, D. J. White 1, Default 0; 3, S. P. Pezet v. R. Puchades (u); 4, M. L. Newbury ½, M. C. Hagan ½; 5, D. A. Bloxson 1, N. Ruff 0; 6, D. Pye 1, N. Purkis 0.

PORTSMOUTH B 4½, FAREHAM A 1½; 1, S. Kent 1, T. R. S. Pavlovic 0; 2, H. Vernon 1, D. Evans 0; 3, B. Sweeney 1, W. Silber 0; 4, Linda Cunningham ½, J. Poulton ½; 5, B. Maund 0, J. Coburn 1; 6, B. Cochran 1, Default 0.

So Portsmouth B, who are relegated end their season with an extravagant flourish to hint at what might have been.

MANGLERS A 0, COSHAM A 1; 1, K. D. F. Gregory v. A. F. Brameld (u); 2, E. N. Holland v. S. Dean (u); 3, Hannam v. A. F. C. Carter (u); 4, A. G. Scoffin v. D. Gibson (u); 5, N. A. L. Phillips 0, A. D. Crossin 1; 6, M. Fowler v. C. W. Bryan (u).

And Cosham A may yet end their wretched season (league champions for the previous four seasons!) by gaining the runners-up position if they manage a massive victory here (5½-½, or 6-0). Manglers will clearly try to avoid being mangled!

DIVISION III

GOSPORT B 4½, PORTSMOUTH C 1½; 1, M. D. Smith 1, M. C. Hagan 0; 2, D. J. White 0, N. Purkis 1; 3, P. J. Eales ½, W. Laxton ½; 4, B. E. Gale 1, A. Vaima 0; 5, K. S. O. Smith 1, M. Tunnicliffe 0; 6, H. Golding 1, J. Ingram 0.

Gosport B will win this division unless Petersfield A beat them 6-0 in the final match of the season (Petersfield are currently in second place!).

DIVISION IV

GOSPORT C 2½, PAULSGROVE A 3½; 1, H. Golding 0, P. McEvoy 1; 2, A. Crouch ½, C. Smith ½; 3, K. S. O. Smith ½, S. Phillips ½; 4, P. Groth 1, D. Worsfold 0; 5, A. Elbourn 0, M. Baxter 1; 6, Mrs. S. Tovey ½, P. Sibley ½. PAULSGROVE A 4, LEIGH PARK B 2; 1, P. McEvoy 1, S. Scott 0; 2, C. Smith ½, R. Smith ½; 3, S. Phillips ½, J. Sexton ½; 4, D. Worsfold 0, A. Charlwood 1; 5, M. Baster 1, D. Bennett 0; 6, P. Sibley 1, A. Agius 0.

Now Paulsgrove A have to await the results of Emsworth A to see which of these two teams will be the divisional champions.

Let me draw to our attention the British Champion-

ship qualifying tournament to be held at Southampton University May 29 — May 31. There will be six rounds Friday (one), Saturday (three), and Sunday (two) and the entry fee is £10 with £185 in the prize fund, while the winner and runner-up will have free entry to the British to be played at Swansea (August 3-15). The limit date for entries is May 26 to L. T. Walker, 3, Rowley Drive, Botley SO3 2SN (tel. Botley 6528).

HAMPSHIRE LEAGUE

DIVISION I

BASINGSTOKE A 2, UNIVERSITY 2½
PORTSMOUTH A 0, UNIVERSITY 5; 1, F. S. Adam-All 0, R. C. Noyce 1; 2, M. Hagan 0, J. Fraser-Mitchell 1; 3, Default 0, R. Walker 1; 4, S. Kent 0, S. Gaynor 1; 5, W. Laxton 0, J. Gould 1.

SOUTHAMPTON A 2½, UNIVERSITY 2½
IBM 3, BASINGSTOKE A 2; 1, K. Gregory ½, J. Fowler ½; 2, J. Wheeler ½, K. Hyde ½; 3, R. Hartley 1, A. Cox 0; 4, G. Jefftha 0, D. Brothers 1; 5, K. Gledstone 1, Default 0.

LEGG A 3, PORTSMOUTH A 2; 1, J. Attwood 1, D. Spurgeon 0; 2, S. W. Know 1, M. Hagan 0; 3, D. F. Thompson ½, F. S. Adam-All ½; 4, T. Gray ½, S. Cragg ½; 5, K. V. Gadd 0, N. Ruff 1.

PORTSMOUTH A 5, SOUTHAMPTON 0 (the visiting team were unable to raise a team).

BASINGSTOKE 2, LEGG A 3
UNIVERSITY 4½, IBM ½; 1, P. Johnstone ½, K. Gregory ½; 2, A. Faller ½, W. McDougall 0; 3, R. Thomas 1, S. Smith 0; 4, J. Fraser-Mitchell 1, P. Burns 0; 5, R. Wiaker 1, K. Gledstone 0.

LEGG A 1, UNIVERSITY 4
BASINGSTOKE A 5, PORTSMOUTH A 0 (this time Portsmouth failed to raise a team).

IBM 2½, SOUTHAMPTON A 2½; 1, K. Gregory ½, M. Buckmaster ½; 2, W. McDougall 1, M. Walker 0; 3, R. Hartley 1, L. Walters 0; 4, K. Gledstone 0, T. Lane 1; 5, A. Ball 0, D. Neil 1.

SOUTHAMPTON A 1½, LEGG A 3½
UNIVERSITY 5, BASINGSTOKE A 0.

PORTSMOUTH A 2½, IBM 2½; 1, F. S. Adam-All 0, J. Wheeler 1; 2, D. Spurgeon ½, S. Smith ½; 3, M. Hagan ½, R. Hartley ½; 4, P. Smith ½, A. Ball ½; 5, J. Steward 1, G. Jefftha 0.

	P	W	D	G	Pt
University	10	8	2	40½	18
Basingstoke A	10	6	1	31	13
IBM	10	4	2	19½	10
Legg A	10	3	1	22	7
Portsmouth A	10	3	1	19½	7
Southampton A	10	1	3	17½	5

Congratulations to University, who retain the County League Championship. They were impressive winners, and went through the season undefeated. Southampton A, who were last season's Division II winners, found the going tough and are relegated.

Next week, I will give the Division II details courtesy of the controller, Brian Cochran.

Young fans flex fingers

BUDDING chess champs are flexing their fingers in the run-up to a junior tournament at Cowplain.

Dozens of youngsters will be playing "pawn to king-4" — the opening move — when they take part in the South-East Hampshire Griffin Open Junior Chess Tournament.

The competition takes place at Cowplain Comprehensive School, Hart Plain Avenue, on May 23 and 24, and is open to chess fanatics up to the age of 18.

"It started life as the Waterlooville Library Junior Chess Club Championship," said tournament organizer Mrs. Gill Holland.

"But it turned out to

be so popular that we decided to open it up to include the whole of Hampshire.

"Last year, we even had entries from as far afield as Somerset, so really it is open to any youngsters interested in chess."

The tournament will be split into categories for the under-18s, under-14s, under-12s, under-tens, and under-

eights.

Trophies and cash prizes will be awarded to the winners of the various competitions, and the tournament also includes the under-ten Hampshire County Championship.

Entry forms are available from the Waterlooville Library, The Precinct, or phone Waterlooville 262638. All entries should be in by May 22.

Chess notes by J.H.J.

TWO WEEKS ago I broached the idea of increasing the size of teams in the P.D.L. — Division I and II to be eight aside (even nine or 10!) with lower teams to be increased to seven.

John Wheeler (J.W.) has put forward a few thoughts. He thinks that larger teams "may cause problems for small clubs" and cites Plessey as an example where their total membership is about seven players. To counter this might it also encourage the "small clubs" to canvass for more support?

"Larger teams means fewer games for those players who regularly play for more than one team" (J.W.).

I don't envisage that there would be a reduction in the total number of teams in the league, in which case there would be more total boards in play i.e. more chess, not less! (and let that be our slogan?).

J.W. also expresses the view that "larger teams probably means fewer teams."

Taking Portsmouth as an example (they have two teams in the upper divisions, five teams in all) they might have to "find" seven extra players. Alternatively they could nominate two extra players and simply have one member play in every other match (50 games!).

However, something between these two contrived schemes would actually obtain.

HAMPSHIRE LEAGUE

Division II

SALISBURY 4, PORTSMOUTH B 1: G. Comben 1, B. Cochran 0; 2, D. E. Ward 1, J. Stewart 0; 3, Mrs. E. A. Hartford 1, D. Jeffery 0; 4, D. Pott 0, R. Prince 1; 5, S. Wales 1, R. Billingsley 0.

BASINGSTOKE B 1, LEIGH PARK 4: 1, E. Smith 0, A. J. Peters

1; 2, O. Worsfold ½, G. Bailey ½; 3, M. Bowhay ½, N. G. LeFevre ½; 4, B. Kocan 0, J. N. Mortlock 1; 5, Default 0, S. J. Scott 1.

SALISBURY 3, LEGG B 2, BASINGSTOKE B 3, SALISBURY 2.

LEGG B 1, PORTSMOUTH B 4: 1, F. Kelly 1, D. Jeffery 0; 2, C. L. Simmons 0, R. Prince 1; 3, D. Shelley 0, J. Stewart 1; 4, P. Brown 0, R. Billingsley 1; 5, M. Edwards 0, F. Guy 1.

LEIGH PARK 2½, SOUTHAMPTON B 2½: 1, G. Bailey 0, D. Webb 1; 2, N. G. LeFevre 1, D. Gardner 0; 3, J. N. Mortlock 0, T. O'Farrell 1; 4, S. J. Scott ½, A. Summers ½; 5, J. R. Sexton 1, G. Winch 0.

SOUTHAMPTON B 5, LEGG B 0.

PORTSMOUTH B 3½, BASINGSTOKE B 1½: 1, M. Winterbotham ½, M. Bowhay ½; 2, B. Cochran 1, J. Shaddick 0; 3, R. Prince 1, K. Bacon 0; 4, W. Laxton 0, B. Kocan 1; 5, R. Billingsley 1, J. French 0.

SALISBURY 2½, LEIGH PARK 2½: 1, R. Lynn 1, A. J. Peters 0; 2, D. Ward 0, N. G. LeFevre 1; 3, D. Hinsley 0, S. D. LeFevre 1; 4, E. Hartford ½, J. N. Mortlock ½; 5, D. Pott 1, J. R. Sexton 0.

LEGG B 1½, BASINGSTOKE B 3½.

SALISBURY 4½, SOUTHAMPTON B ½.

LEIGH PARK 3, PORTSMOUTH B 2: 1, A. J. Peters 0, S. Kent 1; 2, S. P. LeFevre 1, W. Laxton 0; 3, N. G. LeFevre 0, B. Cochran 1; 4, J. N. Mortlock 1, R. Prince 0; 5, J. R. Sexton 1, F. Guy 0.

SOUTHAMPTON B 1, BASINGSTOKE B 4.

LEGG B ½, LEIGH PARK 4½: 1, K. V. Gadd 0, A. J. Peters 1; 2, D. Shelley ½, N. G. LeFevre ½; 3, G. North 0, J. N. Mortlock 1; 4, P.

Brown 0, J. R. Sexton 1; 5, M. Edwards 0, S. J. Scott 1.

PORTSMOUTH B 1, SALISBURY 4: 1, F. S. Adam-Ali 0, R. Lynn 1; 2, J. Stewart 1, D. E. Ward 0; 3, B. Cochran 0, D. Hinsley 1; 4, F. Guy 0, D. H. Pott 1; 5, R. Prince 0, P. Hillier 1.

	P	W	D	G	Pt
Salisbury	10	8	1	38½	17
Basingstoke B	10	7	0	30	14
Leigh Park	10	5	2	27½	12
Southampton B	10	4	1	24	9
Portsmouth B	10	4	0	23½	8
Legg B	10	0	0	6½	0

Salisbury are the County League Division II Champions and are promoted to Division I.

Most readers will know that Gary Kasparov (U.S.S.R.) is the current world champion, so here is one of his early games. White: Magaramov. Black: Kasparov (4th match game, 1979): 1, d4, Nf6; 2, c4, e6 (in his youth Kasparov had a marked preference for the King's Indian ...); 3, Nf3, c5; (... or Benoni. Now, he's 24!) 4, g3, cxd4; 5, Nxd4, d5(!); 6, Bg2(!); e5!; 7, Nf3, e4!; 8, Nd4 dxc4; 9, Nc3, Bc5; 10, Qa4+, Bd7 (10, ... Nc6??; 11, Nxc6, wins); 11, Qxc4, Qb6; 12, Bc3, Nc6! (12, ... Qxb2??; 13, Rb1, Qa3; 14, Ndb5, wins); 13, Nc2, Bxc3; 14, Nxe3 (see diagram. A curious position in which Black simply concentrated an active development) Na5; (0:1). The match for the flight B U.S.S.R. championship ended tied at two-and-a-half each.



CHESS NOTES by J.H.J.

THE P.D.L. has one rule that covers the promotion and relegation of teams within the various divisions.

In essence it states that the winner may have the right to be promoted and the bottom team be relegated. Usually this system of one up and one down has worked well although the occasional team has argued against promotion when they have lost their strongest players.

Notwithstanding the occasional slight resistance the principle of promotion (and relegation) is accepted as a standard. However, to my mind this does not go far enough! I would like to see two teams promoted (relegated) so as to improve the mix within the divisions.

In seasons 1984-85 and 1985-86 Gosport A vigorously claimed the fifth spot in Division I and avoided relegation (in 1985-86) only on games average over IBM A. They were clearly depriving another team of a "better" standard of chess.

In season 1983-84 Portsmouth C were relegated to Division III. They then won Division III (1984-85) and again were relegated in 1985-86. This had the effect of keeping Plessey and Fareham C a division too low.

As a result of various reorganizations in 1984-85 the six Divisions League was changed into five divisions. Petersfield A and Plessey were placed in Division IV and they ended in first and second place respectively.

Normally only Petersfield A would have been promoted, but, due to the withdrawal of Co-op from the league at the end of the season, both teams advanced to Division II in 1985-86!

So, because of an artificial situation of two up, Plessey advanced from Division IV to Division II in successive seasons when otherwise they might have spent one or more additional years vying for promotion.

Averaging the seasons 1981-82 through 1985-86 the runner up in each division has been over a match ahead (2.35 points) of third place while fifth place has been about the same (2.17) adrift of fourth place. This season the second placed teams have the following advantage (statistics correct at time of going to press): Division II, Fareham B (+8); Division III, Petersfield A (+3); Division IV, Emsworth A (+3) and Division V, Emsworth B (-1) but only five teams in this Division. For teams placed fifth the situation is not quite so clear: Division I, Manglers A (-2); Division II, IBM B (-2); Division III, Portsmouth D (-3) and Division IV, Fareham D (-1).

Finally two up and two down has the effect of rewarding the improving clubs who have not necessarily enlarged membership, rather an influx of strong(er) players. Nobody really believes that in the League there are 13 teams stronger than, say, Petersfield A or 18 teams stronger than Paulsgrove A and Emsworth A. Nevertheless these A teams languish in Divisions II and IV and under the present system may remain so unjustly.

DIVISION II

IBM A 5, COSHAM B 1: 1, J. G. Nicholson 1, A. D. Crossin 0; 2, J. E. Wheeler 1, G. Train 0; 3, R. E. Hartley 1, G. F. Abercrombie 0; 4, P. J. Burns 1, A. D. Smith 0; 5, B. S. Pratt 0, A. F. Langley 1; 6, G. D. Jefftha 1, G. F. Yates 0.

FAREHAM B 5, IBM B 1: 1, M. M. Street ½, S. J. Smith ½; 2, J. R. Poulton 1, S. Prince 0; 3, D. W. Coates 1, A. J. R. Wilkinson 0; 4, T. A. Wykes 1, A. J. Ball 0; 5, A. F. Stroud 1, H. Ali 0; 6, Chandler ½, M. Passant ½.

PLESSEY 2, LEIGH PARK A 4: 1, P. A. Rayment 0, A. J. Peters 1; 2, A. T. F. Williams 0, N. G. LeFevre 1; 3, D. G. Foale 0, S. D. LeFevre 1; 4, C. Wood 1, J. N. Mortlock 0; 5, J. B. S. Carns 0, S. J. Scott 1; 6, P. Maddocks 1, R. Smith 0.

IBM A are the Divisional Champions and gain promotion to Division I. Congratulations!

This was quite a well contested struggle with Fareham B looking likely candidates for promotion for much of the season. Surely the deciding factor was the top board for IBM (J. Nicholson) graded at 214 (?) and ranked 68th nationally. There should be quite a tussle in Division I next year for the P.D.L. League championship!

Division II

	P	W	D	G	Pt
IBM A	10	9	0	45½	18
Fareham B	10	3	1	38	17
Leigh Park A	10	4	1	25½	9
Cosham B	10	2	3	25½	7
IBM B	10	2	1	23	5
Plessey	10	2	0	22½	4

Note also IBM's high games average which indicates that they were winning matches at the rate of 4½-1½.

Plessey, who were promoted last season, found the going just too tough although, as can be seen, they only had to win one more match to consolidate their position in the division.

CHESS NOTES BY J.H.J.

This week sees the conclusion of the P.D.L. with the final matches and tables in Divisions 1, 3 and 5.

DIVISION 1

MANGLERS A 3½, COSHAM A 2½ was the final match result once all the played-on games were resolved.

1, K. D. F. Gregory 1, A. F. Brameld 0; 2, E. N. Holland 1, S. Dean 0; 3, D. Hannam ½, A. F. C. Carter ½; 4, N. Fowler ½, C. W. Bryan ½; 5, A. G. Scoffin ½, D. Gibson ½.

So Manglers end their season on a high with the first win against Cosham for many years.

GOSPORT A 3½, PORTSMOUTH 2½; 3, S. P. Pezet 0, R. Puchades 1 was a late resignation! 1, R. C. Noyce 0, G. Oswald 1 was the final game result for this season's Division 1 matches.

Division 1

	P	W	D	G	Pt
Gosport A.....	10	8	2	38½	18
Portsmouth A.....	10	6	0	34	12
Cosham A.....	10	5	0	31	10
Fareham A.....	10	4	1	30½	9
Manglers A.....	10	3	1	24	7
Portsmouth B.....	10	2	0	22	4

Gosport won the League Championship in some style, six points clear of the field and without conceding any loss — although the Manglers match was a close run thing! — becoming the only undefeated team in all divisions. An unusual feature this season was the near 100 per cent. of decisive matches (only two draws).

DIVISION 3

FAREHAM C 4, IBM C 2: 1, J. C. Monk ½, A. J. R. Wilkinson ½; 2, A. Chandler 1, A. J. Ball 0; 3, A. F. Stroud 1, M. Passant 0; 4, M. J. Butler 1, G. Mason 0; 5, H. Tadevoissian 0, R. Hagon 1; 6, R. C. Clark ½, H. Ali ½.

PORTSMOUTH C 4½, PORTSMOUTH D ½: 1, M. C. Hagan ½, B. K. Maund ½; 2, N. Purkis v. D. Jeffery (u); 3, R. Stafford 1, F. Guy 0; 4, C. W. Laxton 1, N. Nixon 0; 5, A. Valma 1, P. Rogers 0; 6, M. Tunnicliff 1, D. Black 0.

PETERSFIELD A 2, GOSPORT A 4: 1, S. Le Blancq 1, M. D. Smith 0; 2, R. H. Storr-Best ½, D. A. Bloxson ½; 3, G. P. Gardner ½, D. J. White ½; 4, P. Flack 0, P. J. Eales 1; 5, P. Mayer 0, B. E. Gale 1; 6, V. Phillips 0, K. S. O. Smith 1.

By comfortably winning this final match of the season, Gosport managed to head the division by an appreciable margin.

Division 3

Gosport B.....	10	8	1	40	17
Petersfield A.....	10	6	1	32½	13
Portsmouth C.....	10	5	2	33½	12
Fareham C.....	10	5	1	30½	11
Portsmouth D.....	10	3	0	23½	6
IBM C.....	10	0	1	18	1

DIVISION 4

MANGLERS B 1, FAREHAM D 5: 1, A. Scoffin 0, A. Harris 1; 2, Default 0, H. Tadevoissian 1; 3, K. Frisby 1, B. Massey 0; 4, R. Davies 0, S. Evans 1; 5, J. Brassell 0, C. Lusher 1; 6, D. Green 0, M. Sygrove 1.

After this win, Fareham move out of the relegation spot although Leigh Park only require a win in their final match to consign Fareham to Division 5.

EMSWORTH A 2½, MANGLERS B 3½ was the final result after the adjudicated decision 6, B. Walker 0, J. Brassell 1; and this ended Emsworth's challenge for the divisional title.

LEIGH PARK B 1½, EMSWORTH A 1½: 1, S. J. Scott v. M. Body (a); 2, R. Smith 1, G. Vosper 0; 3, J. Sexton v. R. Perry (a); 4, A. Charlwood 0, K. Hyman 1; 5, D. Bennett v. B. Walker (a); 6, V. Agius ½, A. Whitehead ½.

There will be some delay in reporting the final situation in this division as John Wheeler (League Secretary) will be on holiday for a few weeks.

PORTSMOUTH E 4, PAULSGROVE B 2: 1, D. Jeffery 0, P. Sibley 1; 2, P. Rogers 1, J. Taylor 0; 3, F. Guy ½, M. Summut ½; 4, E. Nancarrow 1, G. Clair 0; 5, R. Prince ½, D. Murton ½; 6, J. Ingram 1, J. Simms-Mindy 0.

CHESS NOTES by J.H.J.

DURING the week-end May 29 through 31, the County Association organized the BCF qualifying tournament at the behest of the W.E.C.U. The centralized venue at Southampton University attracted a massive entry of 51 with many players from other counties.

After the six rounds of the Swiss tournament a mere half point separated the leading group of six players.

Joint winners (£65 each plus prepaid entry to the British Championship at Swansea) were R. Lynn (Wiltshire) and G. Copeland (Gloucestershire) with 5/6.

Equal third with 4½ points (and £12 prize money) were D. C. Osborne (Bristol and the first alternate); F. Kwiatkowski (the top graded player at 214); K. D. F. Gregory (Manglers and P. D. L. Individual Champion) and O. Worsfold (Basingstoke who won the £25 prize for best score by a junior).

Local junior E. N. Holland (Manglers) won the £20 prize for best score by a player graded under 175 (165J) when he made 4/6.

S. Silver (University) won £20 for the best score by a first round loser when he amassed 4/6.

Two other good performances from juniors were 3½/6 by D. Kumaran (world U12 champion: 183) and M. Walker (Botley).

The scores by unplaced local players were, for Gosport, R. C. Noyce 4, S. P. Pezet 3½ and R. Marsh 3, for Portsmouth, G. Oswald 4 and, for Fareham, the junior players J. Poulton 2½ and J. Monk 2.

Thanks also should be expressed for Laurie Walker giving up his week-end to act as the controller, a function which he ably performed.

Played in round two of the B.C.F. tournament.

White: R. C. Noyce. Black: I. White.
1. e4, e6; 2. d4, d5; 3. Nd2, Nf6; 4. e5,

Nfd7; 5. Bd3, c5; 6. c3, Nc6; 7. Ngf3, Qb6; (an exhibition game by Tal in Latvia 1970 went 7. ... cxd4; 8. cxd4, f6?; 9. Ng5!!, fxg5; 10. Qh5+, g6; 11. Bxg6+, Hxg6; 12. Qxg6+, Ke7; 13. Nc4!, Bh6; 14. Bxg5+, Bxg5; 15. Qg7+, Ke8; 16. Nd6++ (1:0) 8. 00, Cxd4; 9. cxd4, Nxd4; 10. Nxd4, Qxd4; 11. Nf3, Qb6; 12. Qc2, (more usual is 12. Qa4! with the threat of Qg4 — 12. ... Be7?; 13. Qg4!, g6; 14. Bh6, advantage to White — 12. ... Qb4!; 13. Qc2, Qc5!; trying to return the pawn 14. Qe2, with a slight edge to the White) 12. ... Qc5(!); 13. Qe2, f6?; (as in the Tal game this is suicidal) 14. exf6, Nxf6; 15. Ng5, Qd6; 16. Bb5+, Ke2; (16 ... Bd7?; 17. Nxe6 wins) 17. a4!, h6(?); 18. b3, (threat Ba3) 18. ... Nd7; 19. Qh5!, hxg5; 20. Bxg5+, Nf6; 21. Qe8++ (1:0) A game enjoyed by the player of white, but not by White (the player of black!)

During the week-end June 28/29 B.C.F. are holding a course for qualification as a regional coach, to be held at Gregg School, 13 Winin Road, Southampton from 11 a.m. to 7 p.m. each day.

This course will cover the required syllabus, emphasise methods of presentation and will include written and practical tests. Those who reach the required standard will receive the B.C.F. Certificate of Regional Chess Coach.

John Littlewood (a British Master and the Chief National Coach) will be the examining tutor.

June 19 is the limit date for entrants (who should be over 21) and the course will be limited to 24. A cheque for £9.20 (to the B.C.F.) should be sent to Derek Evans, 47 Dalehouse Lane, Kenilworth, CV8 2EP. It would also be useful to indicate your grade, a telephone number for contact and a resume of chess performance and other relevant interest.

CHESS NOTES by J.H.J.

IN THE previous column I gave details of the B.C.F. qualifying tournament held recently at Southampton. Due to pressure of work R. Lynn (one of the joint winners) has had to withdraw and D. C. Osborne of Bristol (first reserve) has agreed to the the replacement.

Played in round five of the B.C.F. tournament when both contestants were leading with $3\frac{1}{2}/4$.

White: D. C. Osborne (196).
Black: K. D. F. Gregory (192): 1, e4, g6; 2, d4, Bg7; 3, Nc3, c6; 4, A4(!), a5; 5, f4, d6; 6, Bc4, Na6; 7, Nf3, Nb4; 8, Bb3! (avoiding 8... d5; and guarding c2 which would be indirectly attacked after 8... Bg4), Nf6; 9, O-O, O-O; 10, h3, d5; 11, e5, Ne8; 12, Kf2!? (Toujours l'attaque — Marshall Foch) f5; 13, Ne2, b6; 14, c3, Na6; 15, Bc2 Nc7; 16, b4! (gaining space) Ba6; 17, Bd3, Bc4, 18, g4(!), e6; 19, gxd5, exf5; 20, h4, Ne6; 21, Rg1, Kf7(?) (under-estimating White's chances. 21... Rf7; would allow Black to play Kf8, or Kh8 according to choice, while reinforcing protection of the second rank); 22, Ng3, Bh6; 23, Bxf5!?, gxf5 (23... Nxf4!); 24, Nxf5, Bg7 (24, ...

Bxf4?; 25, Bxf4, Nxf4; 26, Ng5+, Nxf5; 26, Rxf5, Kg8 (see move 21); 27, Qg4, Ra7 (27... Rf7?; 28, Nh6+); 28, bxa5! (with the threat 29, Ba3), Bd3; 29, Nxf7, Nxf7; 30, Ba3, Rf5 (30, Re8; then the combination of Rg1, f5-f6 and axb6 will overpower Black); 31, axb6!, Rxf5; 32, Qxf5, Qxb6 (32... Qxf5; 33, hxf5, Rb7; 34, a5, Ba6; 35, Kf3, Rf7; 36, Rh1 (threat Rh6), Nf5; 37, e6, Rb7; 38, Re1 (threats Kg4, e7, gives Black no play); 33, Rg1 (1:0) (The pawns will decide or Black could elect for the quick finish by 33... Qb3?; 34, Qd8+, Kf7; 35, Rxf7+; Kxf7; 36, Qf8+, Kg6; 37, Qf6+, Kh5; 38, Qg5+ +).

Keith Gregory was a little unlucky to be on the wrong side of what was probably one of the best played games in the competition. Clearly Osborne would appear to be worth his belated qualification on the basis of this game!

This year the British Championship (Swansea, August 3-15) is to be a non-smoking congress. Several correspondents have queried whether it would now be appropriate to ban smoking in the local league.

John Sexton (Leigh Park B) proposes that a ban should at least apply "when junior players take part in senior events." He adds pungently that he "doesn't see why their young lungs should be subjected to a gas attack for two-and-a-half hours of an evening."

Dr. Geoff Richardson (who played for Cosham in the Sixties and is considering returning to the game) notes that his "marked aversion for a tobacco-smoke polluted atmosphere" would require a club sufficiently large enough "to support a no-smoking club night" with the hope "that the league might eventually move to ban smoking at matches."

I go along with these sentiments and hope that something constructive can be achieved at the next A.G.M. Any further observations should be sent to 103, Queens Road, Gosport.

Chess notes by J.H.J.

GAMES played in the local league don't often exceed 30 moves (a subsequent column will deal with the issue of the rate of play at which time the majority of those still unresolved will be sent for adjudication).

In the lower divisions (three through five) an incomplete game may only be continued with the prior agreement of both players and, as the norm is adjudication, very few games are actually played to a finish.

Divisions I and II operate a slightly different system. A player may insist on playing on, but loses the right of venue should his opponent have opted for adjudication. So a player who wants to play out all his games to a finish must be prepared to visit the opposition club . . . a lot! Or complete his games by move 30 . . . a near impossibility.

I would like to see playing-on become the standard as it gives additional match practice (late middle-game and end-game) that would advantage chess at county level (where the rate of play is 42 moves / 1¼ hours) or congress (county rate then a quick-play finish) and ultimately reflect ability accurately within the grading system (grades based on honest toil rather than gratuitous intervention of the adjudicator).

My suggestion would be to treat a home match as such for the duration of the match. Players could still opt for adjudication (the match captains ascertain this before exchanging team sheets!) and, should both require this, then it happens, otherwise a game is played to a finish.

Almost overnight adjudications would become a minority interest and hopefully chess would benefit. Remember I issued a slogan in an earlier column, it applies equally here.

More chess, not less!

Played in round three of the recent B.C.F. tourna-

ment at Southampton.

White, J. Monk (Fareham); Black, R. Marsh (Gosport).

1, e4, c6; 2, d4, d5; 3, e5, Bf5; 4, h4, (4, Nc3) h5; 5, Bd3 (N!), Bxd3; 6, Qxd3, e6; 7, Ne2, (7, Nf3) c5; 8, c3, Nc6; 9, Nd2, Nh6(!); 10, Ng3, g6; 11, Nf3, Nf5; 12, Nxf5, gxf5; 13, Bg5, Qb6; 14, OOO (This looks very risky. 14 OO! the QNP is not really loose because of 15, Rfb1 with attack) a5; (with obvious attacking intent) 15, Qe2, (15, Rhe1) a4; 16, Bf6, (16, Rd2) Rh6!; (watch this rook!) 17, Qe3, (White is drifting without a play) c4; 18, a3, Ra5; 19, Rd2, Rb5; 20, Rc2, Rg6; 21, Rh2, (21, Rg1) Rg4; (better to increase the pressure. 21 . . . , Bxa3 probably wins but would give White too much hope) 22, Ng5, Rb3!; (one threat is Bxa3 and Rxa3 and "a" pawn = queen but a less obvious threat decides this issue) 23, f3?, Rxd4!; 24, Nh7??, (as good a way to resign as any) Rd1+; (0:1).

You may have noticed indirect references to the P.D.L. Individual Championship in a previous column when I noted the unsubstantiated result. Now I can reveal all the outstanding matches.

Round 3: Maund 1, Russell 0.

Round 5: Default 0, Gregory 1; Storr-Best 1, Baker 0; Bloxson 1, Default 0; Maund 0, Puchades 1; Wood 1, Default 0; Laxton 1, Cochran 0.

This leads to the final standings: champion — K. D. F. Gregory (5/5); 2, R. H. Storr-Best (4); 3, M. Jones, R. V. Puchades, D. A. Bloxson (3); 6, B. K. Maund (2½); 7, M. R. Baker, J. B. S. Cairns, W. Laxton, C. Wood (2); 11, S. J. Russell (1½); 12, B. V. Cochran (0).

Keith Gregory retained his title in good style (the last round default was academic) and completed this second season (at last!) with a clean score.

Chess Notes by J.H.J.

Fast games — but avoid blunders

THE RATE of play in this league is 30 moves in 1¼ hours. When the players have previously agreed to continue their game then the additional moves are 24 an hour, otherwise, if time permits, moves continue at the rate of six moves every quarter hour.

Clearly a very fast player could oblige his opponent to make extra moves (12 or even 18, say) within the stipulated playing time in the hope that the position at the call of time may be more easily resolved (opponent agrees to resign!).

As the vast majority are not intrinsically speed players some method should be sought to allow more moves to be played in a single session. This has the purpose of making either adjudication or an agreed result a clearer decision that subsequently evokes no adverse criticism.

An idea which we might borrow from the Southampton League is to play 36 moves in 12 hours. This does seem to give risk to fewer adjudications as many match games are completed in an evening. As I play in both leagues, I can appreciate the difference: only one game in six required an extra session in Southampton whereas in the P.D.L. it was four games in eight.

I must confess though that the new rate does require some adjustment.

Regularly I had ten or so moves to make in the last few minutes of play but I nevertheless managed to contain my gross blunders to a single game.

Here is an example of play at this faster rate.

White J.H.J. (Sarisbury A), Black: R. Thomas (University B, 177) played on Board 1. 1, e4, c5; 2, Nf3, d6; 3, d4, cxd4; 4, Nxd4, Nf6; 5, Nc3, a6; 6, Bg5, e6; 7, f4, Qc7(?); (This move was tried in Nunn v. Chandler, Commonwealth 1985, and that game went 8, Qf3, b5?; 9, f5!, Nc6; 10, Nxc6, Qxc6; 11, Bxf6, gxf6; 12, Bd3, Bg7; 13, fxe6, fxe6; 14, Qh5+, Kd8; 15, e5!, Qc5; 16, OOO, Qxe5; 17, Qf3, Rb8; 18, Rhe1, Qxh2; 19, Kb1, Bd7??; 20, g3!, Qh6; 21, Rh1, Qg5; 22, Rh5, 1:0) 8, Bxf6, gxf6; 9, f5, Nc6; 10, Nxc6, bxc6; 11, Qf3, e5; 12, Be4, h5; 13, OO, Bb7; 14, Kh1, h4; 15, Rfd1, Rb8; 16, b4, h3; 17, g3, Rg8; 18, Rab1, Be7; 19, a4, Rd8; 20, Ba2, Rc8; 21, Rd2, Rg5; 22, Rbd1, Qd7; 23, g4, Kf8; 24, Qxh3, d5; (at this stage both players had five minutes to the time control) 25, exd5, Bxb4; 26, Ne4!, Bxd2; 27, Rxd2!, cxd5; 28, Qh8+, Rg8; (28... Ke7; 29, Qxf6+ wins) 29, Qxg8+, (obvious — but good!) Kxg8; 30, Nxf6+, Kg7; 31, Nxd7, d4+; 32, Kgl, f6?; 33, Nb6(?), (33, g5!) Rc5; 34, Be6, Be4; 35, Nc4, Bf3; 36, h3, White has made the time control so ... (1:0).

Late results in the P.D.L. have just been notified.

DIVISION II

Portsmouth C 5½, Portsmouth D ½, 2, N. Purkis 1, D. Jeffery 0.

DIVISION IV

Adjudications resolved this match. Leigh Park B. 2½, Emsworth A 3½, 1, S. J. Scott 0, M. Body 1; 3, J. Sexton 0, R. Perry 1; 5, D. Bennett 1, B. Walker 0.

The final standings were:

Division IV

	P	W	D	G	Pt
Paulsgrove A.....	10	8	0	38½	16
Emsworth A.....	10	7	1	35½	15
Gosport C.....	10	5	0	33	10
Manglers B.....	10	4	1	24½	9
Fareham D.....	10	3	0	23½	6
Leigh Park B.....	10	2	0	25	4

Paulsgrove well deserved their title by just pipping Emsworth in an interesting season-long struggle.

For information here is the final table which was omitted previously.

Division V

	P	W	D	G	Pt
Petersfield B.....	8	5	2	29	12
Emsworth B.....	8	4	2	26	10
Portsmouth E.....	8	4	1	26	9
Gosport D.....	8	2	3	23	7
Paulsgrove B.....	8	1	0	16	2

CHESS NOTES BY J.H.J.

Check up on draw dodging

CHESS, for a combative game, is unusual in that it provides many methods of obtaining a drawn result.

Even a gross material advantage may be insufficient to guarantee victory: tyros know that King and Knight — or even Knights — versus King is impossible to win, even though help-mate is available when faced with two Knights. But add, say, some pawns to both sides and the extra piece or pieces — usually — tell.

How many readers know all NINE drawing stratagems? As an amusing exercise you might like to compare your own list with mine in the next column and I am certain few will know the "Silber Coup"!

Every year I try to analyse my results so that I can set a realistic target for the following season. Last year I lost too many games, as did everyone else! so clearly my intention was to suffer fewer losses.

Somehow this approach seemed to work (no ... I didn't play less chess!) but in the process I notched up a 30 per cent. draw rate. I can claim only one "grandmaster" draw — of 13 moves when I accidentally transposed moves and had to allow a repetition to survive — yet within my team I seem to have acquired a reputation for draws that envinces hilarity.

So my intention next season is to reduce the quantity of draws, yet, in that case, I

have a sneaking suspicion that my losses will escalate and I shall be back where I started!

Continuing the theme here is an interesting game from the Soviet championship, which qualifies as Zone Four for World Championship purposes.

White: Bareev, Black: Gurevich: 1, d4, Nf6; 2, c4, e6; 3, Nf3, b6; 4, Nc3, Bb7; 5, a3, d5; 6, cxd5, Nxd5; 7, Qc2, Be7; 8, e4, Nxc3; 9, bxc3, 0-0; 10, Bd3, c5; 11, Bb2, Nc6; 12, Rd1, cxd4; 13, cxd4, Rc8; 14, Qe2, Na5; 15, h4, f5; 16, d5, exd5; 17, e5, Nb3; 18, g4, fxg4; 19, Ng5, Bxg5; 20, hxg5, g6; 21, Qxg4, Qe7 (see diagram); 22, Bxg6!, hxg6; 23, Rh6, Rc6; 24, Qh3, Bc8; 25, Rh8+, Kf7; 26, Qf3+, Ke8; 27, Rxf8+, Qxf8; 28, Qxd5, Na5; 29, Bc3, Qxa3; 30, Qg8+, Ke7; 31, Qg7+ (1/2:1/2). An exciting struggle!

The players through to the Inter-zonal are 1, Belyavsky; Salov (11/17) and 3, Ehlvest; Eingorn (10/4).

Because of an error in the last column the point of my suggestion was lost. Instead of 30 moves in one-and-a-quarter hours I advocated 36 moves in the same time. Some players however might actually approve the error which was for 36 moves in 12 — at least it would suitably fill our leisure hours!

White to move

Chess notes by J.H.J.

I SUSPECT that few readers will have recalled all the variations of the drawing resource, so here for comparison is my definitive list.

1. Adjudication — it is worth noting that one gets no worse than a draw with a "successful" claim.

2. Fifty-move Rule — This is fairly rare as no pawn move or capture is the criteria. Many years ago I defended the King v. King, Knight and Bishop ending and my opponent did not know the winning method. Unfortunately he was able to adjourn and on resumption it was obvious that he had "found" the correct technique and my 49th move rearguard was to no avail.

3. Triple Repetition of Position — The same player must have the move when repeating. Recently Bob Noyce overcame this draw by ensuring that in the "repeated" position he had managed to alternate his Knights on the move.

4. "Grandmaster" draw — Usually this is a short non-event where, for fear of losing or for mercenary reasons (to ensure a share of the prizemoney), the players agree to split the point.

5. Insufficient Material — In the previous column I gave the example of King v. King, Knight, Knight.

6. Theoretical Draw — Here I have in mind the King, Rook v. King, Bishop ending where Philidor's position cannot be forced.

7. Agreed (Time) Draw — This is usually a trade-off where the player with the material advantage may have (probably) insufficient time to capitalize his extra force i.e. bird in the hand . . .

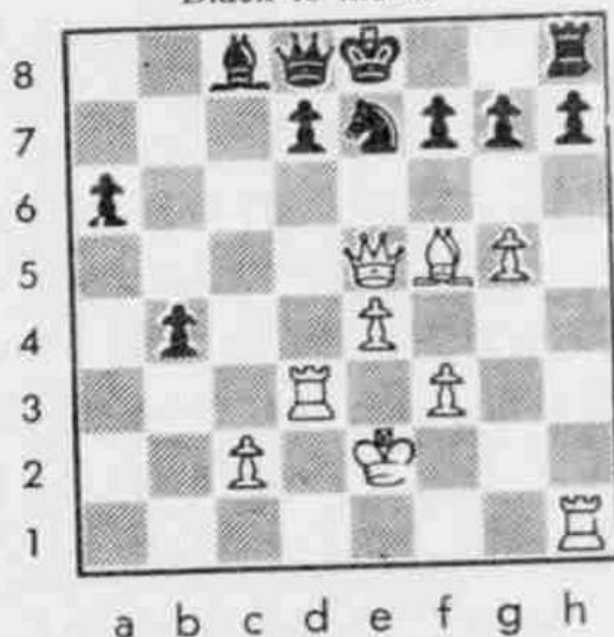
8. Quick-Play Draw — A loss of time is not upheld where the superior material is not actively striving to win: the result is adjudged to be a draw.

If you managed all the above then you did very well. However, I guarantee that your list is incomplete: it will not contain the following stratagem:

9. "The Silber Coup" — I had an unfinished game in the Fareham match (which I was winning) but neither player would agree to a venue for the continuation. Warwick Silber (Fareham match captain) was made aware of the problem and, quick as a flash, said: "Well, you'll have to agree a draw then." A toss of a coin resolved the issue (of venue) in my favour. (See diagram.)

White: J.H.J., Black: J. D. Eva: 23, . . . , Kf8 (Black's sealed move); 33, Qd6 (33, Bxd7, Bxd7; 34, R1d1, Bb5; 35, Qxb5(!), was one plausible alternative), Ke8; 34, R1d1, f6; 35, gxf6, Nxf5; 36, Qe6+! (somewhat flash) Kf8; (36, . . . , Ne7; 37, Rxd7, Bxd7; 38, f7+!, Kf8; 39, Rxd7, probably wins); 37, Rxd7, Bxd7; 38, Rxd7, Ng3+; 39, Ke1, Qxf6; 40, Qc4!, Qa1+; 41, Kf2, Qf1+; 42, Qxf1, Nxf1; 43, Rd8+ (and White went on to win this simplified ending in a further 16 moves). (1:0).

Black to move.



WHEN I previously edited this column in the late 60s, England had few internationally ranked players. Penrose, who had been English champion, was on I.M. although he did claim a famous victory over Tal, then world champion. Wade, an expatriate New Zealander, was still active in tournament chess and held I.M. rank while Golombek was not active.

Nowadays the situation is vastly improved. Eleven Grandmasters, with Short ranked tenth in the world and considered a "super" G.M., and over 40 I.M.s make England one of the most powerful chess nations in the world.

This improvement is reflected at all levels in the game and many promising young players seem destined to accept the mantle of their elders. I must point out that nearly all our ranked G.M.s and I.M.s are under 35.

More titled players mean a greater chance of meeting them in tournament play and causing upset results.

Local players Graeme Oswald regularly scores victories over I.M.s at the Portsmouth Congress, while this column gave Arthur Brameld's draw against G.M. Agdestein.

Now a local player has gone one better in the recent Luxembourg International Nine-Round Swiss.

White: Philip Rossiter (2210), Black: Gutman (G.M., 2530): 1, d4, Nf6; 2, c4, g6; 3, Nc3, Bg7; 4, e4, 0-0 (inviting 5, e5; this led to a spectacular result in Letelier (Chile) v. Fischer (U.S.A.) Leipzig Olympiad 1960); 5, e5, Ne8; 6, f4, d6; 7, Be3, c5!; 8, dxc5, Nc6; 9, cxd6, exd6; 10, Ne4, Bf5!; 11, Ng3? Ba6; 12, Nf3, Qc7; 13, Qb1, dxe5; 14, f5, e4!; 15, fxe6, exf3; 16, gxf3, f5!; 17, f4, Nf6; 18, Be2, Rfe8; 19, Kf2, Rxe6; 20, Re1, Rae8; 21, Bf3, Rxe3!; 22, Rxe3, Rxe3; 23, Kxe3, Qxf4+!!; (0:1) since 24, Kxf4, Bh6 mate or 24, Kf2,

Ng4+; 25, Kg2, Ne3+; 26, Kf2, Nd4; 27, Qh1, Ng4+; 28, Kf1, Nxf3 with a winning attack); 5, Nf3, c6; 6, Bd3, d5; 7, e5, Ne8; 8, Be3, dxc4; 9, Bxc4, Nc7; 10, 0-0, Nd7; 11, Bb3, Nb6; 12, Ng5, Ndb5; 13, Rc1, f6?; 14, exf6, exf6 (see diagram . . . and give some thought to what you would play); 15, Bf4!, Kh8 (if 15, . . . fxe4; 16, Bxc7, Qxc7; 17, Nxd5, Qb8; 18, Nc7+, Kh8; 19, Nxa8, wins); 16, Bxc7, Nxc7; 17, Nf7+, Rxf7; 18, Bxf7, f5; 19, Rc1, Qf6; 20, Qb3, Bf8; 21, a4, Bd6; 22, Bc4, Qxd4; 23, Rcd1, Qf6; 24, Ne4!, Bxh2+ (24, . . . fxe4; 25, Rxd6! wins e.g. . . . Qxd6; 26, Qc3+, mating. As well as threatening 26, Rxf6. White also has 26, Rd8(+) leading to the same Qc3+, mating line); 25, Kxh2, fxe4; 26, Rd8+, Kg7; 27, Rg8+, Kh6; 28, Qg3(!), Nd5; 29, Nd5; 29, Bxd5, cxd5; 30, Rh1 (1:0). An excellent victory.

Gutman won the tournaments with 7/9 while Rossiter, a junior, was 8th with six points in a field of 88.

White to move.



Chess notes by J.H.J.

THIS WEEK by way of a change I offer two diagrams, both Black to move. For the reader the problem is to discover the link between them and the following brief game may provide a clue.

White: J.H.J., Black: Anon: 1, e4, e5; 2, Nf3, Nc6; 3, d4, exd4; 4, Bc4, Nf6; Nf6; 5, 0-0, Nxe4; 6, Re1, d5; 7, Bxd5, Qxd5; 8, Nc3 (all "book." Now theory recommends 8, . . . , Qa5!; or 8, . . . , Qh5; or even 8, . . . , Qd8) 8, . . . , Qc5?? (but theory has yet to discover this move); 9, Nxe4, Qa5 (9, . . . , Qe7; would prolong the game); 10, Nf6+, Kd8; 11, Re8+, (1:0).

In the first diagram it is obvious that Black is coming under pressure on the King side. Black could try 21, . . . , Qb6; 22, Qxb6, Nxb6; 23, Rxd6, Bc6; or perhaps 21, . . . , Qc5; 22, Qxc5; dxc5; 23, g5, hxg5; 24, hxg5, Ne3; 25, gxf6, Nxd1; 26, Rxd1 or better 21, . . . , Rfd8; 22, g5, hxg5; 23, hxg5, Ne8 with the intention of doing a runner with the Black King.

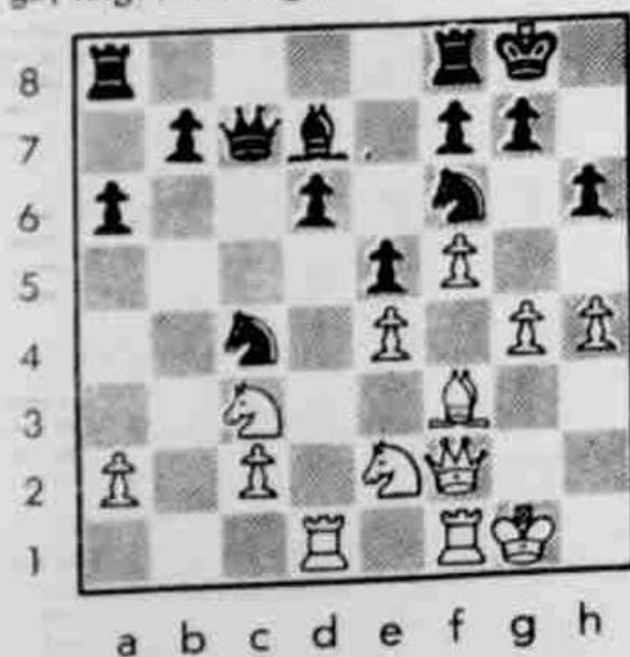
The game continued 21, . . . , b6 (so that after Qc5 the b-pawn will recapture); 22, g5, hxg5; 23, hxg5, Nh7; 24, Qh4, Qd8(!);

(24, . . . , Qc5+; 25, Kh1, Qe3; 26, g6, fxe6; 27, fxe6, Rxf3; 28, Qxh7+, Kf8; 29, Nd5!! wins); 25, f6!? Ne3?? (Black had to play 25, . . . , gxf6 or Nxf6); 26, Rf2, Nxd1; and after 27, Rh2, Black could not avoid mate.

In the second diagram most players would recognize that the Black King's Rook was about to be incarcerated and therefore try 17, . . . , Kg7!; or 17, . . . , h6, even 17, . . . , Ng8 but not this opponent.

Play continued 17, . . . , a5? (yes, we all know that passed pawns must be pushed); 18, Bh6+, Kg8; 19, Kb2, Be6; 20, Ba4 (stopping a-pawn nonsense while controlling d7), . . . , Bc4; 21, Rd4, Rb8+; 22, Ka3, Be6(!) (else 23, e5!); 23, Rb1!, Rc8; 24, Rb5, Nd5; 25, c4 and Black was mated many moves later.

And that connecting link? Well, in each case, Black was a computer chess programme. On the evidence of this type of play we humans have little to fear from the "machine." However, when more powerful micros become available at a competitive price then we may not remain complacent: the challenge will have arrived.



Taste joys of this speedy game

OVER THE last few seasons speed chess has gained in popularity. Indeed only recently I.T.V. gave a prime time spot on Saturday early evening viewing to stage the prestigious Dockland Speed Challenge between G.M. Short (England) and G.M. Kasparov (Russia) which the World Champion (K) won comfortably.

Speed Chess, where the rate of play is half an hour each for the complete game, has the attraction of immediacy and lends itself to one day tournament Swiss play when 5(+) games are easily completed in six or so hours.

Hampshire recognized this gap in their internal tournament schedule last year by staging a Quick Play team tournament. But due to certain clashes with established congresses and a certain lack of advertisement only seven teams competed.

Readers will know that the event was slightly better supported this year and that, after a rousing struggle, Gosport emerged worthy champions.

This week a game from that event that gives a flavour of the play.

White: J.H.J. Black: A. Faller (Southampton University: 183) Played in round 2.

1. e4, e5; 2. Nf3, d6; 3. d4, cxd4; 4. Nxd4, Nf6; 5. Nc3, a6; 6. Bg5, e6; 7. f4, b5; (the Polungayevsky variation. Surprisingly I have never met this over the board). 8. Bd3, (the critical line is 8. e5!? as in Rodriguez v. Polugayevsky, Biel Interzonal 1985, which went 8. ..., dxe5; 9.

Fxe5, Qc7!; 10. exf6, Qe5+; 11. Be2, Qxg5; 12. Qd3, Qxf6; 13. Rf1, Qe5; 14. Rd1, Ra7!; 15. Nf3, Qc7; 16. Ng5, f5; 17. Qd4, Qe7; 18. Nge4!, h5!; 19. Nd6+, Qxd6; 20. Qxa7, Qe5! (N); 21. Qd4, Nd7!; 22. Qxe5, Nxe5; 23. Kd2, Bd6!; 24. Kc1, Ke7; 25. Rfe1, Bd7; 26. Bf1 better is a4, Rc8; 27. Kb1, g5; 28. h3, h4; 29. Ne2, Bc6; 30. Nd4, Bb7; 31. Bd3, Kf6!; 32. Bf1, Bc5; 33. c3 better is Nb3, Bd5; 34. a3, Ng6!; 35. Rd2, Nf4; 36. Ka1, Rg8 winning; 37. Nc2, g4; 38. b4, Ba7; 39. Ne3, Bxe3; 40. Rxe3, gxh3; 41. gxh3, Rg3!; (0:1) meanwhile ...)

8. ..., Nbd7; 9. Qe2, Qb6; 10. Nf3, (10. Nb3!) Bb7; 11. f5, e5; 12. Be3, Qa5; 13. Nd2, b4; 14. Ne4!?, (14. Nb3!) Qc7; 15. Na4!?, Bc6; (black can just about snatch the e-pawn but White retains a positional edge) 16. Nab6, Rb8; 17. Nxd7, Bxd7; 18. Nd2, Be7; 19. 00, d5!; 20. exd5, Nxd5; (with the threat 21. ..., Nxe3; 22. Qxe3, Bc5) 21. Kh1, a5; 22. Ne4, 00 (?); 23. f6. (Steve Pezet walked past at this point then told the team that I had just won!) Nxf6; 24. Nxf6+, Bxf6; 25. Rxf6, gxf6; 26. Qh5, f5; (both sides were in time-trouble nevertheless Black had to try 26. ..., Rf moves. In that case White could try 27. Bh6, so that if 27. ..., Kh8; 28. Bg5 while the counter to other moves would seem to be 28. Qh4 with the dual threats Qxf6 and Qg3+) 27. Qg5+, Kh8; 28. Qfb+, Kg8; 29. Bh6, (1:0) Faller commented after the game that he had never previously lost with this variation: I can't claim to have been sorry!

CHESS NOTES by J.H.J.

Games on computer turn real players off

REGULAR readers will know that I do not hold computer chess programmes in high regard.

Some years ago, as part of a promotion drive, a local company offered quite substantial prizes in goods for beating a chess computer. Such was the quality of advertising that a veritable crowd of enthusiasts had appeared, although in truth, not many could actually claim to be chess players even though most could play chess.

Quite a number of similar machines were available for trials and eventually I was able to get a test game which went as follows:

White: J.H.J. Black: computer — 1, e4, c5; 2, Nc3, Nc6; 3, g3, g6; 4, Bg2, Bg6; 5, d3, d6; 6, Nge2, e5; 7, 0-0; Nf6; 8, h3, 0-0; 9, Bg5, Be6; 10, Qd2, Nd4 (with the threat 11, . . . Bxh3; 12, Bxh3??, Nf3+); 11, Nxd4, cxd4; 12, Nd5, Bxd5; 13, exd5, Rc8; 14, f4, Qb6; 15, f5, Qxb2 (at Blitz play the "machine" will grab any undefended material); 16, Rac1, Qxa2; 17, g4, Nxd5; 18, Bh6 (18, f6 may be better), Bxh6 (18, . . . ,

f6 is definitely better); 19, Qxh6, Ne3?? (no good is 19, . . . , f6, 20, fxc6, hxc6; 21, Qxg6+, Kh8; 22, Rf5, nor does 20, . . . , Rc7; fare better after 21, Ra1 followed by 22, Bxd5+. Probably the best try is 19, . . . , Nf6 so that if 20, g5, Nh5; 21, f6, Rxc2; 22, Rxc2, Qxc2; 23, Bf3, Qxd3; 24, Bxh5, Qg3 perpetual check); 20, f6, Nxf1; 21, Qg7++ (1:0).

The conditions of play were two minutes (!) each for the whole game which meant that as the machine was incapable of resigning a mate had to be delivered. Also for the game to count it had to be monitored by the sponsors.

Some time later my turn arrived and the game followed exactly the same moves as my trial, with mate being delivered in something short of a minute!

So this game highlights my dislike of the programmes that have insufficient variability inbuilt to change the moves. All machines play on till mate is delivered whatever the material deficit while at present none learn from their losses.

Chess notes by J.H.J.

THIS WEEK a pot-pourri with pieces from local level through to the international scene.

John Wheeler, the P.D.L. Secretary, has notified me of the impending A.G.M. (the 41st.) which will be held at the IBM Chess Club, 1, Northern Road, Cosham, on Tuesday, September 15, starting at 7.30.

One of the interesting proposals on the agenda is to allow players to agree to play their League games at the Cole Cup rate, i.e. 30 moves in one hour each then a quick-play finish in an additional quarter-of-an-hour each. As this rule requires both players to agree to the conditions I see little objection to adding it to the existing rules. Still the membership may have different views.

Hampshire captain, Peter Marshall, has sent me details of the County fixtures for this season: September 19: Jamboree (Taunton); October 17: Cornwall (Exeter); October 31: Dorset (Minstead); November 14: Wiltshire (away); January 23: Devon (Yeovil?); February 20: Gloucestershire (away); March 12: Somerset (away); April 23: B.C.F. Quarter-Finals.

There are also two friendlies — September 26: Sussex (Southsea) with a grading limit of 160, and March 26 — Civil Service (London).

The jamborees are for teams of 12, while the friendlies will be contested over 16 boards. All other matches will consist of 32 boards.

A county side of average grade 125, with a limit of 140, can play in the grading jamboree.

If you would like to be considered for the A or B sides and are not on the current mailing list then simply contact Peter on Southampton (0703) 774464.

As The News Chess correspondent I was invited by the B.C.F. to name my Player of the Year. Forty-six other columnists were also polled.

My first choice was G. M. Short for his excellent tournament record and World top ten ranking.

In second spot I put G. M. Speelman mainly for his efforts on behalf of the English team and his British Championship title.

Thirdly I placed I. M. Kosten, for his results on the tournament circuit which gave him +55 rating points over the year.

Now that Player of the Year results are to hand I can reveal that Speelman was awarded the title after gaining 191 votes to Short's 187. Chandler (64), Flear (51) and Adams (40), along with others trailed some way behind the "big two."

A word of advice. If you play the Sicilian, don't try it against Short.

White: Short, Black: Velikov (played in the German League): 1, e4, c5; 2, Nf3, e6; 3, d4, cxd4; 4, Nxd4, a6; 5, Bd3, Bc5; 6, Nb3, Ba7; 7, Qe2, Nc6; 8, Be3, Bxc3; 9, Qxc3, Nf6; 10, Nc3, d6; 11, 0-0-0, 0-0; 12, F4, Qc7; 13, g4!, Nxc4; 14, Qg3, Nf6; 15, Rhg1, Ne8; 16, Kbl, Ne7; 17, Nd4, Qc5; 18, Nf3, f6; 19, e5, dxe5; 20, fxe5, f5; 21, Qh4, Qc7; 22, Be4, h6; 23, Qxh6!, Qxc4; 24, Rxc7+, Nxc7; 25, Ng5, Re8; 26, Rgl, Qd4; 27, Qh7+, Kf8; 28, Nxc6!, Nxe6; 29, Qh6+, Resigns (1:0).

Young masters

A STRONG Hampshire contingent competed in the British Chess Championships at Swansea, collecting one title, and scoring a couple of near misses.

In addition to the under-13 title won by James Poulton, of Fareham, Edward Holland, of Waterlooville nearly gained the under-16 crown.

He led the field, winning his first five games, before dropping the last two. His score of five points from seven games was shared by David Neil, of Eastleigh.

Near miss

Neil Lusher, of Fareham came within a whisker of victory in the under-nine category, but also ended with five out of seven.

Peter Wells, of Portsmouth and Oxford University achieved seven out of 11 in the main Championship, and Philip Rossiter, of Denmead scored five/four in the same event.

Other results: Major Open: Mark Walker, of Botley, six out of 11. Under-18: Lorian Cunningham, of Portsmouth, three/four out of 11. Under-16: James Poulton, four out of seven; Kelly Frisby, of Portsmouth, three. Under-15: Edward Holland, four/four out of seven; Kelly Frisby, two/four. Under-14: Anthony Wells, of Portsmouth, two out of seven. Under-13: Adam Chandler, of Fareham, three/four out of seven; Anthony Wells, three; Adam Crocker, of Portsmouth, two/four; Emilia Holland, of Waterlooville, two/four. Under-12: Adam Crocker, four out of seven; Emilia Holland, three/four; Claire Lusher, of Fareham, three/four; Neil Lusher, three; Matthew Crocker, of Portsmouth, two/four. Under-11: Christopher Blake, of Chandlers Ford, four/four out of seven; Matthew Crocker, three.

CHESS NOTES

by J.H.J.

WAS IT Tartakover who offered the aphorism that the winner of a game of chess is the person who makes the second last blunder? In any case I might add that if you are prone to blunder then at least be sure to arrive at the position with a material plus . . . you might still survive!

This week it is "spot the blunder" with the solutions at the end.



White: F. C. Kingdon (to move) the game continued: 22, Rxe1, Ra5; 23, e5, Kf8; 24, exd6, exd6; 25, Bc6, Rxa3; 26, Re8+, Kg7; 27, Rd8, Ne7; 28, Rxd6, Nxc6; 29, Rxc6, Rxc3; 30, Rd6, Ra8; 31, Ne3, R8a3; 32, d4, cxd4; 33, Rxd4, Rd3; 34, Rf4, Ra2; and Black later forced an exchange of rooks and went on to win the ending in a further 16 moves.



White: J. E. Arney and with Black to play the game went: 19, . . ., g5; 20, Ne2, Rae8; 21, Rad1, Re6; 22, Nd4, Rg6; 23, f3, f4; 24, e4, g4; and now Black had two minutes to reach the time-control at move 30.

25, hxg4, Rh6; 26, Nf5, Rxf5; 27, exf5, Qh2+; 28, Kf2, Qg3+; 29, Ke2, Rh2; 30, Rf2, Ne4; and in this interesting position a draw was agreed.

And those blunders?

Well in position one 28, Rxd6 is a blunder losing a piece and 28 . . . Nxc6 compounds it. Simply 28, . . ., Ra6 saving 22 moves and several hours' effort.

The second position was a comedy (tragedy!) of errors by both players.

23, . . ., f4 starts the rot. Better 23, . . ., Qh6 intending to play Qg7 or g4. 25, hxg4 allows Black too much counter-play down the h-file.

29, Ke2 loses while White has to be careful after 29, Kg1 if Black attempts to win rather than take the perpetual check. Black can't quite win 29, Kg1, Qg3; 30, Rb1, (not 30, Qf2, Qh2++) so that if 30, . . ., Rh2 (with the intention 31, . . ., Qh4 mating) White counters 31, Qf2.

Finally 29, . . ., Rh2. When Black has missed 29 . . . Qxg2+; 30, Rf2, Qxf2+; 31, Kxf2, Rh2+; 32, K moves, Rxb2 and Black should win.

Perhaps some would argue whether the first position contained a blunder since the oversight didn't actually cost a win. In that case I coin the word 'blustake' — something less than a blunder yet more than a mistake.

CHESS NOTES by J.H.J.

AS I play both chess and bridge to a good standard I am often asked by other players which is the more difficult game. Although it is not easy to compare the individual nature of chess with the partnership requirements of bridge, I invariably reply that chess is the harder game to master.

Both games require that concentration be extended over many hours, but bridge offers a respite with a new game (deal) every seven minutes, or so, whereas this is not usually available in a protracted game of chess.

Bridge only starts with 13 men (cards) a side and quickly reduces in force as the hand is played, making analysis progressively easier. The chess player starts with 16 men and this material might remain intact for many moves thereby compounding the problems of analysis.

Players at both games rank from novice to expert, but grandmaster (of chess) is a title to make the lesser player quail, whereas at bridge the title of grandmaster, although indicating a measure of excellence, is almost a term of endearment.

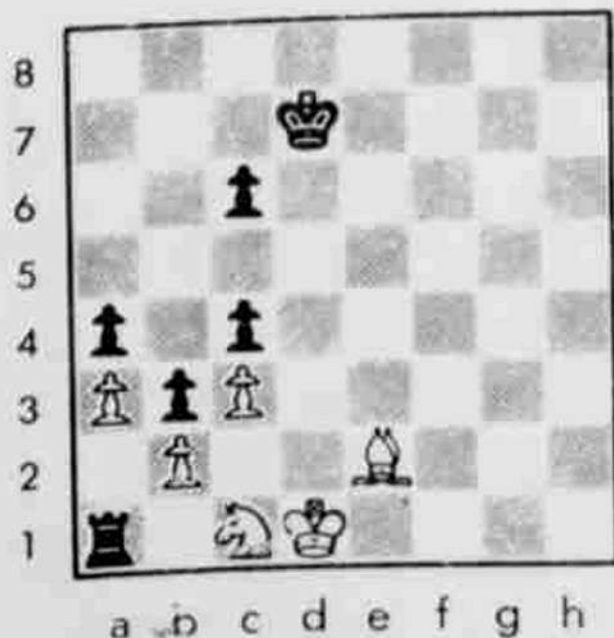
To beat a chess grandmaster requires talent, but at bridge, although talent is a help, luck is a predominant factor. Many years ago Britain's top bridge pair — Terence Reese and Boris Shapiro — (top five world-wide) were eliminated from a

tournament by an unknown pair of suburban housewives who had the good fortune to be dealt all the cards.

Chess players of the ilk of P. N. Lee (ex British Champion), D. Sherman (Southern Counties Champion), and M. Horton (Midlands Champion) have all made their mark at bridge.

I cannot recall a strong bridge player who has made a similar transition to chess. This more than anything else should reinforce my contention that chess is the more demanding game.

This week a study by F. Simkhovitch (1927) with White to move and draw.



Chess notes by J.H.J.

MANY YEARS ago I had a 12 move brevity published by B. H. Wood in his column in the London Illustrated News. The position was unusual in that no pieces had been exchanged and although Black had a wretched position there was much play and no little debate about the final outcome.

Also I was Black and had resigned!

Baruch Wood then developed his article into an outline of all the plausible reasons, why I had resigned and finally concluded that as the weather was clement I was going for a swim!

However I had no wish to sustain a five hour rearguard in a position which was "lost."

Nowadays I would try to stay in the position and hope for some counter-chances. As an example here is a game from the semi-final of the Robertson Cup (Southampton League's KO tournament). There is no argument that I drifted into a wretched position (again!).

White: A. Carpenter (Fairoak, 165), Black: J.H.J. (Sarisbury). 1. d4, Nf6; 2. c4, g6; 3. Nc3, Bg7; 4. e4, d6; 5. Be2, O-O; 6. Bg5, c5; 7. Nf3? (7. d5 is usual) h6; 8. Be3, Ng4; 9. Bc1, Na6?; (I

thought I was gaining a tempo on the standard position. 9., cxd4; followed by Qb6 gives Black the better of it) 10. d5, Bd7?; (10., Nc7; with e6 or e5 to follow) 11. O-O, Nc7; 12. h3, Nf6?; (Black should try 12., Ne5; so that if 13. Nxe5, dxe5; 14. f4, exf4; 15. Bxf4, Bd4 16. Kh1, Kg7; and then e5 while if 15. Rxf4, Bd4 16. Kh1, e5; 17. dxe6, Nxe6; and then Bc6) 13. e5! (oh well back to defence) Ne8; 14. Bf4, b6; 15. Qd2, Kh7; 16. Bd3, dxe5; 17. Nxe5, Nd6; 18. Ng4(?), Bxg4; 19. hxc4, Qd7; 20. Rae1, Rh8; 21. Re2, (21. Re3!.) Rae8; 22. Rfe1, A6; 23. Ne4 (?)



CHESS NOTES by J.H.J.

TWO WEEKS ago I left you with the study by Simkhovitch: 8; 3k4; 2p5; 8; p1p5; PpP5; 1P2B3; r1NK4; and it was White to move and draw.

White has a material equality but Black has a strong latent threat in Rb1 followed by Rxb2 when the passed pawn would certainly win for Black.

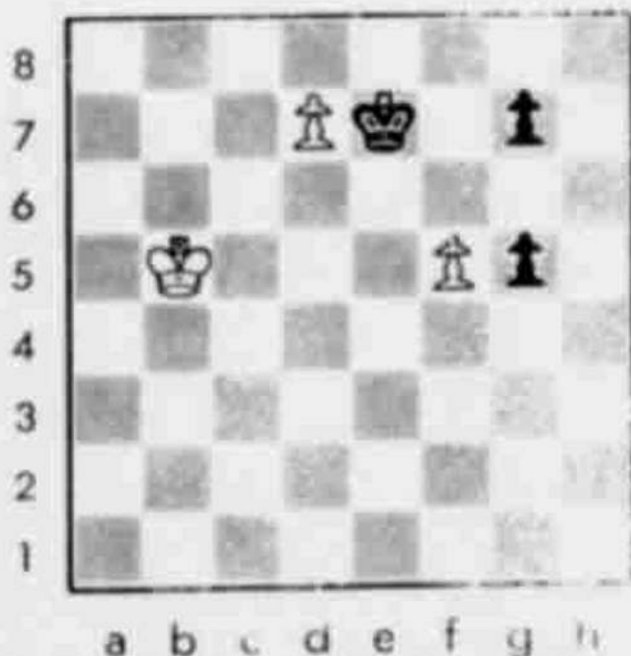
1, Bg4+, Kd6 (the Black King can go to any legal square without spoiling the point of the study); 2, Bf5!, Ra2! (with the winning threat Rxb2!); 3, Nxa2!!, bxa2; 4, Kc1, A1=Q+; 5, Bb1! (1/2:1/2). The White King will manoeuvre on the squares c2 and c1 effectively incarcerating the Black Queen.

Even non-Chess players noticed that there was no connection between the aborted game and the attached position of the previous column. For those who are interested, the game (the point of which was to keep playing in a bad position when equal in material and holding some chance for counterplay) stopped with the pieces so: 4r2r; 2nqppbk; pp1n2pp; 2pP4; 2P1NBP1; 3B4; PP1QRPP1; 4R1K1; and White had just made the move 23, Ne4. Play continued: 23, . . . Nxe4; 24, Rxe4, Rhg8 (this is not good as White can now play for Re3 and Rh3. A better try was Bf8); 25, Kf1? (at last a chance!) b5; 26, Bxc7 (and now White is pursuing a mirage in Black's time-trouble — two minutes to reach move 36); . . . Qxc7; 27, d6?, Qxd6; 28,

R4e3??, bxc4; 29, Bxg6+, Qxg6 (of course! White wanted fxg6; 30, Qxd6, exd6; 31, Rxe8, winning the exchange); 30, Rxe7, Rxe7; 31, Rxe7, Qb1+; 32, Ke2, Qxb2; 33, Rxf7?? (although Black's Queen is en prise); . . . Re8+; 34, Kd1, Qb1+; 35, Qc1, Re1+; 36, Kxe1, Qxc1+; (1:0).

I will hold over a report of the League Annual General Meeting until next week. Suffice it to say that the new season is upon us!

Finally I will leave you with a reprise of last week's study by A. Selesniev: it is White to move and draw.



Chess notes by J.H.J.

THE STUDY that I left over was 8; 3Pk1p1; 8; 3K3Pp1; 8; 8; 8; 8; and it was white to move and draw.

White appears to be in an invidious position. Even with the most exact patient manoeuvring, zugzwang will result and white will have lost all his pawns. And what about that passed g-pawn?

1, Kc6! (with the threat 2, Kc7, and wins!), Kd8; 2, Kd5!, Kxd7; 3, Ke4!, Kd6!; 4, Kf3 (is white trying for the "square" i0?) Ke5; 5, Kg4, Kf6; 6, Kh5!, Kxf5 (1/2:1/2).

So, after all, that g-pawn was significant . . . for white!

The A.G.M. of the Portsmouth and District League provided no shocks either in the election of officers or the amendment to rules. For the record the officers for this coming season are: president, S. Dean; vice-president, A. Crossin; hon. secretary, J. Wheeler; hon. treasurer, K. Hyman; individual championship controller, C. Wood; Cole Cup controller, K. Gregory; delegate to Hampshire C.A., S. Dean; schools secretary, D. Brett.

Rule amendments usually attract a lively debate, but for the most part the membership were sympathetic to the proposed changes, although form dictated that there be a few minor alterations to phraseology and vocabulary. The nomination rule was restructured to close a loophole. Now a club with two, or more,

teams must nominate players for all their teams bar the lowest.

The membership were pleased to accept from Mrs. Grant the John Grant Memorial Trophy, which will be open to all the membership and will be awarded for the best percentage result in any one division throughout a league season. As John Wheeler had all the previous season's statistics to hand, the trophy was able to be presented to Peter Rogers of Portsmouth E with 100 per cent. (8/8) ahead of Brian Gale of Gosport B (7/7) and yet two more players with a full score.

The roll of honour and trophy winners for the season 1986-87 was: J. P. Price Memorial (individual), K. D. F. Gregory; Ruth Rose Cup, C. W. Laxton; J. E. C. Grant Memorial, P. Rogers; League Champions, Gosport A; Division Two, IBM A; Division Three, Gosport B; Division Four, Paulsgrove A; Division Five, Petersfield B; Cole Cup (knock-out), IBM A; Cole Plate, Portsmouth A.

Entries for the Individual Championship (£2) should be sent to C. Wood, 19, Eastern Road, Havant, PO9 2JE (Tel. 454524) to arrive by October 3. The tournament will follow the usual format of a six-round Swiss.

Entries for the Cole Cup (the league K.O. championship) — £2.50 per team — should be sent to K. D. F. Gregory, 159, White Hart Lane, Portchester, PO16 9AY by October 1.

Clocked out . . .

EVEN though Hampshire fielded a substandard side at the recent W.E.C.U. Jamboree, they still managed to score 6-12.

However, things could have gone significantly better had the Gosport trio (boards 1, 2 and 4) exercised better clock management.

I lost on time (with eight moves to make!) from an equal position, Martin Newbury squandered an easy win in a quick-play finish, while Steve Pezet also lost on time, having an extra pawn and the better position.

In the event, Gloucestershire won the tournament with 7½ on a split tie from Devon.

Details: 1. J. H. Hones 0, R. Haydon 1; 2. M. L. Newbury ½, M. Charter ½; 3. M. I. Walker 1, A. P. Ashby 0; 4. S. P. Pezet 0, K. C. House 1; 5. I. A. Stenhouse 1, C. Staze 0; 6. B. N. Otway ½, B. W. Hewson ½; 7. M. G. Buckley 0, A. Pleasants 1; 8. P. Miller 1, A. Ponting 0; 9. D. R. Neil 1, S. R. Boniface 0; 10. M. C. Hagan 0, P. J. Meade 1; 11. P. L. Marshall ½, J. Walker ½; 12. P. J. Hebbelthwaite ½, L. Jupp ½.

Last Saturday, Hampshire were again in action when they contested a second team friendly against Sussex at South-sea Community Centre.

Although both teams were at about the same strength, it was apparent that the visitors had travelled to avenge the defeat of the previous season and, after quite a struggle, they emerged 8½-7½ winners.

An amusing finish (for us!) on board 3 came from : rr5k/ p2Q2p1/ 7p/ 5P1K/ 1p5P/ 8/ 6P1/ 8. Black to play "tried . . . b3??; f6, gxf6??; Kxht and now noticed that mate was unavoidable. Of course . . . Rb6! avoids any nonsense.

Details: 1. E. Holland 1, M. R. Scott (161) 0; 2. P. L. Marshall ½, A. Hall (c160) ½; 3. L. C. Walters 1, R. T. F. Williams (158) 0; 4. M. C.

Hagan 0, A. Cooper (147J) 1; 5. M. R. Baker 1, R. D. Hirsch (53) 0; 7. D. Thompson 0, R. H. Saunders (144) 1; 8. E. Culliford ½, R. D. Hollands (143) 1; 10. F. Kelly 0, D. Elliot (110J) 1; 11. P. J. Hebbelthwaite 0, D. Oates (124J) 1; 12. C. W. Laxton 0, J. Richmond (136) 1; 13. S. D. Lefevre ½, M. Curtis (133) ½; 14. J. Stewart 1, R. Sherlock (115J) 0; 15. H. Golding 1, C. E. Boyes (125) 0; 16. R. M. Prince ½, P. Coulson (c120) ½.

The board 1 game was quite an exciting tussle. White: E. Holland (Manglers), Black: M. R. Scott (161). 1. e4, c5; 2. Nf3, d6; 3. d4, cxd4; 4. Nxd4, Nf6; 5. Nc3, g6; 6. f3, (6. Be3 is in vogue), Bg7; 7. Be3, Nc6; 8. Bc4, 00; 9. Qd2, Bd7; 10. 000, Rc8; 11. Bb3, Ne5; 12. g4, Nc4; 13. Bxc4, Rxc4; 14. H4, Qa5; 15. h5, Rfc8; 16. Nb3, Qa6; 17. hxg6, fxg6; 18. g5, Rxc3; 19. bxc3, Nxe4(?!); 20. Qd5+, e6; 21. Qxe4, Bxc3; 22. Kb1 (so as to meet 22. . . . Qa3; with 23. Bc3), Rc4; 23. Qd3, d5; (The interest is maintained in the game since, although Black is a Rook down, White has fewer than five minutes to reach the time-control at move 42); 24. Bd4, Bxd4; 25. Nxd4, Qb6+; 26. Ka1, Ra4; 27. c3, e5; 28. Ne2 (28. Nb3, Qxb3; 29. Qxd5+, Qxd5; 30. Rxd5, Bc6; 31. Rxe5, Bxf3; 32. Rf1 looks good for Black), Be6; 29. Rd2, Qa5; 30. Qc2(?) (perhaps 30. Nc1 first), d4 (Better 30. . . . Ra3); 31. Nc1, Ra3; 32. cxd4, Rc3; 33. Qb2, Rxf3; 34. dxe5, Rxc1+; 37. Rxc1, Kxh7; 38. Qxb7+, Kg8; 39. Qb8+, Kg7; 40. Qc7+, Qxc7; 41. Rxc7+, Kf8; 42. Rxa7, (1:0).

An earlier column gave all the dates for this season's county matches, since which time the date for the Civil Service match has been changed to January 9. Informed sources tell me that the current grading list should become available in mid-October . . . unfortunately there was no mention of which year!

CHESS NOTES BY J.H.J.

Keith Gregory, the P.D.L. Individual Champion, did very well at the recent Paignton Congress, where he came second equal in the Premier, with a score of 5/7 (three wins and four draws) in what was a fairly tough tournament.

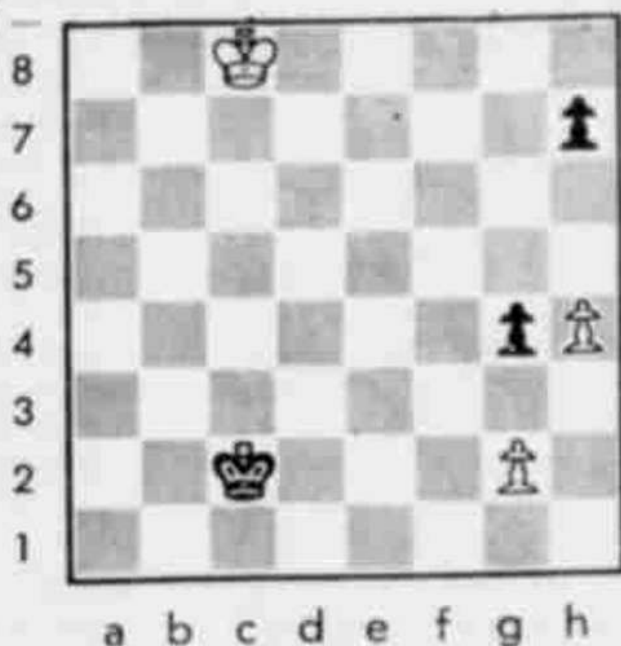
In the last round Keith had Black against Susan Arkell, the reigning British Woman Champion, an I.W.M. and in contention to become England's second woman grand master.

White: Susan Arkell (199). Black: K. D. F. Gregory (192).

1, e4, g6; 2, d4, Bg7; 3, c3, d6; 4, Bd3, Nd7; 5, Bg5, c5; 6, Ne2, Ngf6; 7, Nd2, O-O; 8, O-O, h6; 9, Bh4, e5; 10, Nc4, Qc7; 11, Rc1, b5; 12, Ne3, a6; 13, f4(?), exf4; 14, Nf4, Bb7!; 14, ... g5?; only weakens Black's king position as 15, Nfd5 gains a tempo for White to reposition the attacked bishop) 15, Nfd5, Nxd5; 16, exd5, cxd4; 17, cxd4, Qb6; 18, Kh1, Qxd4; 19, Rc7, Nc5!; 20, Be7, (What else? With three pieces and two pawns en prise White must simply mix it and hope Black goes wrong) Nxd3; 21, Bxf8, Rxf8; 22, Rxb7, Qxe3; (Now White could resign!) 23, Qf3, Qxf3; 24, Rxf3,

Rc8!; 25, h3, (25, g3, allows Rc1+; 26, Kg2, Ne1+;) Rc1+; 26, Kh2, Be5+; 27, g3, Rc2+; 28, Kg1, Bd4+; 29, Kf1, (29, Kh1, leads to mate or loss of a rook / exchange after 29, ... Nf2+; and 30, ... Ng4+;) Ne5; 30, Ra3, Rxb2; 31, Rxa6??, Nf3!!; (0:1) (as after a few spite checks, White is mated by Rf2. A very neat finish to an economical game!).

The study by V. Halberstadt, 1929, echoes the position from an earlier column, and (as usual!?) it is White to move and draw.



CHESS NOTES BY J.H.J.

Keith Gregory, the P.D.L. Individual Champion, did very well at the recent Paignton Congress, where he came second equal in the Premier, with a score of 5/7 (three wins and four draws) in what was a fairly tough tournament.

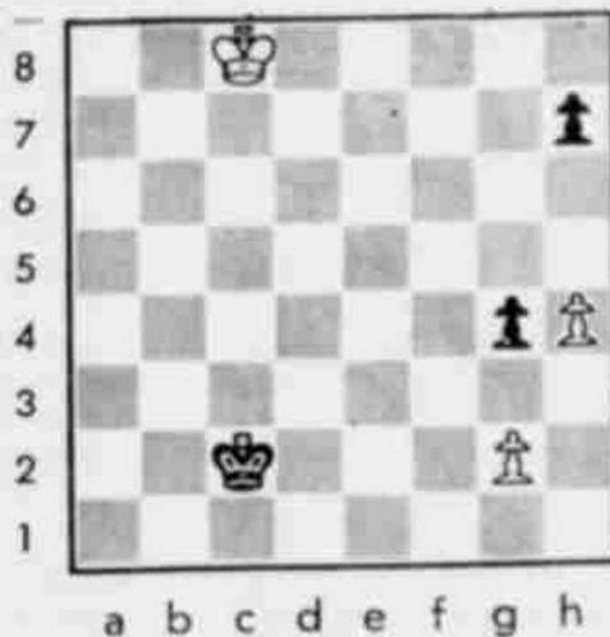
In the last round Keith had Black against Susan Arkell, the reigning British Woman Champion, an I.W.M. and in contention to become England's second woman grand master.

White: Susan Arkell (199). **Black:** K. D. F. Gregory (192).

1, e4, g6; 2, d4, Bg7; 3, c3, d6; 4, Bd3, Nd7; 5, Bg5, c5; 6, Ne2, Ngf6; 7, Nd2, O-O; 8, O-O, h6; 9, Bh4, e5; 10, Nc4, Qc7; 11, Rc1, b5; 12, Ne3, a6; 13, f4(?), exf4; 14, Nf4, Bb7!; 14, ... g5?; only weakens Black's king position as 15, Nfd5 gains a tempo for White to reposition the attacked bishop 15, Nfd5, Nxd5; 16, exd5, cxd4; 17, cxd4, Qb6; 18, Kh1, Qxd4; 19, Rc7, Nc5!; 20, Be7. (What else? With three pieces and two pawns en prise White must simply mix it and hope Black goes wrong) Nxd3; 21, Bxf8, Rxf8; 22, Rxb7, Qxe3; (Now White could resign!) 23, Qf3, Qxf3; 24, Rxf3,

Rc8!; 25, h3, (25, g3, allows Rc1+; 26, Kg2, Ne1+;) Rc1+; 26, Kh2, Be5+; 27, g3, Rc2+; 28, Kg1, Bd4+; 29, Kf1, (29, Kh1, leads to mate or loss of a rook / exchange after 29, ... Nf2+; and 30, ... Ng4+;) Ne5; 30, Ra3, Rxb2; 31, Rxa6??, Nf3!!; (0:1) (as after a few spite checks, White is mated by Rf2. A very neat finish to an economical game!).

The study by V. Halberstadt, 1929, echoes the position from an earlier column, and (as usual!?) it is White to move and draw.



Chess Notes by J.H.J.

RATHER belatedly I can reveal the details of the Final of the Cole Plate which completes all the outstanding results from last season.

Portsmouth A 4½, Paulsgrove A ½.

1, G. Oswald 1, P. McEvoy 0; 2, N. Purkiss 1, C. Smith 0; 3, N. Ruff ½, S. Phillips ½; 4, R. Stafford 1, D. Worsfold 0; 5, W. Laxton 1, D. Scotney 0.

Graeme Oswald has been kind enough to send me the score of the top board game: the notes are based on those of the winner.

White: P. McEvoy, Black: G. Oswald.
1. b3, b6; (the rate of play is 30 moves in an hour, then a quarter of an hour each to complete the game. In some way this explains the eccentric opening!) 2. Bb2, Bb7; 3. e3, Nf6; 4. Nf3, c5; 5. Be2, d6; 6. 00, Nbd7; 7. Nh4?!, (in order to exchange the light-square Bishop. 7. Ne1 is better) g5!?!; 8. Bf3, d5; 9. Nf5, e6; 10. Ng3, Bd6; (10. ... Rg8!) 11. c4, Rg8; 12. cxd5, Nxd5; 13. Ne4?, (better 13. Nbc3, Nxc3; 14. dxc3, Bxf3; 15. Qxd6!?, Bb7 =) Bc7; 14. Nbc3, g4!; (white's idea has simply invited the attack) 15. Bxg4, Nxc3; 16. Nxc3, Bxh2+; (16. ... Qh4; 17. h3, h5; was an alternative motif) 17. Kxh2, Qh4+; 18. Kg1, (18. Bh3, allows a quick finish with Rxc2+) Rxc2; 19. f3, Rxc2+!; 20. Kxc2, 000; 21. Rg1, Ne5; 22. Ne4, (after 22. e4, simplest is Ba6 and, if say 23. d3, then Nxd3 leads to a quick finish) Rg8+; 23. Kf1, (0:1) (as Qh3+ will force mate).

Matches have now started in the local league and it would appear that Cosham could well be struggling in this year's competition if, as is strongly rumoured, they do not have the services of Arthur Brameld.

DIVISION I: Cosham A 1½, I.B.M. A 3½. 1, S. Dean 0, J. G. Nicholson 1; 2, A.F.C. Carter ½, W. M. McDougall ½; 3, D. Gibson 1, J. F. Wheeler 0; 4, A. D.

Crossin 0, R. E. Hartley 1; 5, C. W. Bryan 0, P. J. Burns 1; 6, G. Train v. S. J. Smith (p).

Portsmouth A 4½, Fareham A 1½. 1, G. Oswald ½, A. Corkett ½; 2, D. Spurgeon ½, T. R. S. Pavlovic ½; 4, I. Bradley 1, J. R. Poulton 0; 4, R. Puchades 1, D. Evans 0; 5, M. Hagan ½, W. H. Silber ½; 6, S. Kent 1, J. A. Coburn 0.

DIVISION III: Plessey A 3½, Paulsgrove A 2½. 1, R. T. Williams 0, P. McEvoy 1; 2, P. A. Rayment 1, C. Smith 0; 3, Q. Foale 1, S. Phillips 0; 4, C. Wood 1, D. Worsfold 0; 5, P. Haddocks ½, M. Baxter ½; 6, J. B. S. Cairns 0, M. Sammut 1.

Portsmouth D 1, Portsmouth C 5. 1, B. Cochran 0, A. Daley 1; 2, Default 0, N. Seville 1; 3, R. Prince 0, S. Garside 1; 4, D. Jeffery 1, F. Guy 0; 5, P. Rogers 0, B. K. Maund 1; 6, R. White 0, W. Laxton 1.

Petersfield A 3½, Fareham C 2½. 1, R. H. Storr-Best 1, J. D. Eva 0; 2, G. D. Gardner 0, A. Chandler 1; 3, G. R. Dent ½, M. J. Butler ½; 4, P. Flack 0, A. Cagnasso 1; 5, B. W. Chambers 1, A. Stroud 0; 6, R. A. Mullenger 1, B. Massey 0.

I gave you a clue that the study 2K5/7p/8/8/6pP/8/2k3P1/8, with White to move and draw, carried an echo from an earlier column.

1. Kd7, Kd3; 2. Ke6, Ke3; 3. Kf5, g3; 4. Kg4!, Kf2; 5. Kh3! when Black has nothing better than 5. ... h5; (½:½).

The astute reader may have noticed an alternative try for a win by Black. 1. Kd7, Kd3; 2. Ke6, Ke3; 3. Kf5, h5; 4. Kg5, Kf2; 5. Kxh5, g3; 6. Kg6!, Kxg2; 7. h5, Kf3; 8. h6, g2; 9. h7, g1 = Q+; 10. Kf7!, but this is a theoretical draw as Black cannot gain time to advance his King (by the usual strategem of forcing the White King in front of his pawn) for that position would be stalemate.

CHESS NOTES

by J.H.J.

THE re-emergence of the Gosport club, after a break of many years, passed off as something more than a whimper yet short of a bang when they drew their opening encounter with the promoted team Salisbury in last week's match.

Roger Marsh, who lives in Gosport yet plays on a high board for Buckinghamshire, was presented with a piece (in a drawish position) to win but, as a measure of compensation, David Bloxsom avoided winning when comfortably ahead by two pawns.

For Salisbury their board three played up to his name (Champion!) when he demolished Mike Smith while their bottom board took advantage of time pressure to clinch a win against Steve Hughes.

The outcome of the match depended upon the top board result where the Black player was a qualifier for last year's British Championship.

White: J.H.J. Black: R. C. Lynn

1, e4, e6; 2, d4, d5; 3, Nc3, Bb4; 4, e5, c5; 5, a3, Bxc3+; 6, bxc3, Qc7; 7, Qg4, f5; 8, Qg3, Nc6(?); (8, ... Ne7 was played in the first game of the Tal v. Botvinnik match 1960 which continued 9, Qxg7, Rg8; 10, Qxh7, cxd4; 11, Kd1?, Bd7; 12, Qh5+!, Ng6; 13, Ne2, d3!; 14, cxd3, Ba4+?; 15, Ke1, Qxe5; 16, Bg5!, Nc6; 17, d4,

Qc7; 18, h4!, e5; 19, Rh3, Qf7; 20, dxe5, Ncxe5; 21, Re3, Kd7; 22, Rb1, b6; 23, Nf4, Rae8; 24, Rb4!, Bc6; 26, Rxf4, Ng6; 27, Rd4, Rxe3+; 28, fxe3, Kc7; 29, c4, dxc4; 30, Bxc4, Qg7; 31, Bxg8, Qxg8; 32, h5, (0:1)) 9, Bb5, Qf7?; (9, ... Ne7; 10, Qxg7, Rg8; 11, Qxh7, Rxxg2?; 12, Qh5+, Ng6; 13, Kf1, Rg4; 14, f3, end. An interesting try is 9, ... cxd4; 10, Bxc6(!), bxc6; 11, cxd4, Ba6; 12, hr, 000!); 13, Qc3, leading to an altogether different position) 10, Bxc6+!, bxc6; 11, Rb1? (Trite. 11, a4!, or 11, Nf3) Ba6; 12, Nf3, Ne7; 13, h, (Suddenly White's position is difficult to develop) Kd7; (13, ... Qh5!; 14, Bg5, Ng6; 15, dxc5, Kd7; 16, Rb4, h6; 17, Be3, Nf8; with g5 to follow) 14, h5, Rhb8; (14, ... Rg8!) 15, Ra1, (Yes, move 11 was wrong) h6; 16, a4!, cxd4; 17, Nxd4, Bc4!; 18, Ba3, Nc8; (18, ... Rg8!) 19, a5, a6; 20, Kd2, Rb7; 21, Qf4(!), (Threat 22, g4. White has ten minutes to the time-control at move 36) Rc7; 22, Bc5, Ke8?; (22, ... Ne7;) 23, Bd6!, c5; (Now Black has ten minutes left) 24, Nxe6!?, Qxe6; (If 24, ... Rc6; 25, Qxf5!, Nxd6; 26, exd6, Rxd6; 27, Rae1) 25, Bxc7, Kd7; 26, Bb6, Kc6; 27, Rab1, (two minutes remain) Bb5; (five minutes remain) 28, Rhe1, Nxb6; (If 28, ... Ne7; 29, Qe3) 29, axb6, Kxb6; 30, Qg3, Ra7; 31, Qg5, Qxg6; 32, hxg6, Re7; 33, f4, Re6; 34, g4(!), Rxxg6; 35, e6(!), Kc7; 36, Rxb5(!), axb5; 37, e7, (1:0).

Details: Salisbury 2½, Gosport 2½ — 1, R. C. Lynn 0, J. H. Jones 1; 2, D. E. Ward 0, R. Marsh 1; 3, K. Champion 1, M. D. Smith 0; 4, J. E. Milward ½, D. A. Bloxsom ½; 5, D. H. Pott 1, S. Hughes 0.

CHESS NOTES By J.H.J.

NOT OFTEN would I be able to report that "rain stopped play," but few players would be surprised that the county match against Devon was a casualty of the recent hurricane. I will pass on any details of the rearranged fixture as they become available.

In our own area the league is at last in full swing, so here are the latest results:

DIVISION I

IBM A were comfortable 4-2 winners over Cosham A after the board six game resulted S. J. Smith ½, G. Grain ½.

Gosport A 3½, Manglers A 2½: 1, R. C. Noyce 3½, K. D. F. Gregory ½; 2, B. E. Gale 0, E. N. Holland 1; 3, J. H. Jones ½, M. Fowler ½; 4, M. D. Smith 1, D. Hannam 0; 5, D. A. Bloxson ½, A. G. Scoffin ½; 6, S. P. Pezet 1, R. Davies 0.

DIVISION II

Cosham B 2½, Leigh Park A 3½: 1, G. Train ½, S. D. Le Fevre ½; 2, R. R. Carter 0, D. Bennett 1; 3, M. R. Baker 0, N. G. Le Fevre 1; 4, G. F. Abercrombie 0, S. J. Scott 1; 5, A. D. Smith 1, J. J. D. Gatt 0; 6, A. F. Langley 1, J. N. Mortlock 0.

Portsmouth B 3, IBM B 3: 1, S. J. Kent 0, J. M. Morris 1; 2, D. Jeffery 1, S. J. Smith 0; 3, S. M. Cragg ½, P. Burns ½; 4, B. K. Maund ½, B. Pratt ½; 5, J. Steward 0, H. Alston 1; 6, S. P. Garside 1, R. G. J. Hillier 0.

DIVISION III

Fareham C 2½, Plessey 3½: 1, A. Chandler 0, R. T. F. Williams 1; 2, M. J. Butler 1, P. A. Rayment 0; 3, A. F. Stroud 0, C. Wood 1; 4, A. Cagnasso ½, D. G. Foale ½; 5, R. C. Clark ½, P. R. Maddocks ½; 6, C. Lusher ½, A. C. Rodger ½.

Portsmouth C 2½, Petersfield A 3½: 1, S. Cragg 0, R. H. Storr-Best 1; 2, B. Maund 1, B. W. Chamber 0; 3, S. Garside 0, P. F. Flack 1; 4, W. Laxton ½, D. P. Collinson ½; 5, F. Guy 0, D. Ainslie 1; 6, R. Nutland 1, J. Storr-Best 0.

Portsmouth D 3, Paulsgrove A 3: 1, B. Cochran 1, P. McEvoy 0; 2, D. Jeffery ½, C. Smith ½; 3, J. Steward 1, S. Phillips 0; 4, R. Prince ½, D. Worsfold ½; 5, P. Rogers 0, M. Baxter 1; R. White 0, P. Sibley 1.

DIVISION IV

Emsworth A 5, Manglers B 1: 1, D. Tunks 1, D. Hannam 0; 2, M. Body 1, R. Davies 0; 3, G. Vosper 1, E. M. Holland 0; 4, K. Hyman 0, A. G. Crocker 1; 5, A. Quick 1, J. A. Brassell 0; 6, B. Walker 1, M. G. Crocker 0.

DIVISION V

Emsworth B 3, Gosport D 3: 1, A. Quick 0, J. Penn 1; 2, A. Whitehead 1, R. Russell 0; 3, A. Vosper 0, A. Elbourne 1; 4, J. Delaney 0, J. Adams 1; 5, V. Phillips 1, A. Hemmens 0; 6, J. Bailey 1, I. Barforth 0.

Leigh Park B 4½, Paulsgrove B 1½: 1, D. Bennett 1, J. Taylor 0; 2, K. W. Allen ½, M. Sammut ½; 3, R. Smith 1, D. Murton 0; 4, J. Mortlock 1, G. Claire 0; 5, A. Charlwood 0, J. Sims-Mindry 1; 6, J. Sexton 1, L. Diamond 0.

The Individual Championship pairings have been drawn and the limit date is November 21: B. Maund v. W. Laxton; A. Carter v. J. Coburn; M. Baker v. D. Tunks; B. Cochran v. K. Gregory; C. Wood v. M. Baxter.

Keith Gregory, the defending champion, is the favourite for the title but I expect Tony Carter to be in close contention.

Looking back through past columns I notice that I have been remiss in not mentioning postal chess. Here to redress the balance is a game from the semi-final stage of the British Open. Steve qualified with 5/6 (no losses) in the preliminaries and currently has 2½/3 with five games to complete.

White: S. P. Pezet. Black: M. MacLeod: 1, e4, e5; 2, f4, d5; 3, exd5, e4 (a recent try to enhance the Falkbeer Counter Gambit is to offer a further pawn by 3, ... c6! although the game Hellers v. Klaric, Amsterdam 1985 highlights Black's problems. That game went 4, Nc3, exf4; 5, Nf3, Nc6; 6, d4, cxd5!; 7, Bxf4, Bd6; 8, Bg5!?, Be6; 9, Bd3, Nbd7; 10, O-O, h6; 11, Bh4, O-O?!; 12, Qd2, Qb8; 13, Rae1, Bf4; 14, Qe2, Re8; 15, Ne5, g5?; 16, Rxf4!, gxf4; 17, Qf3, Kg7; 18, Qxf4, Ng4; 19, Rf1, Ndx5; 20, dxe5, Qxc7; 21, h3, Qb6+; 22, Kh1, Qe3; 23, Bf6+, Kf8; 24, hxg4, Qxf4; 25, Rxf4, a6; 26, Rd4 (1:0)); 4, d3, Nf6; 5, dxe4, Nxe4; 6, Nf3, Bc5; 7, Qe2, Bf5 (if 7, ... Bf2+; 8, Kd1, Qxd5+; 9, N3d2 with 10, Nc3 to follow and Black loses material); 8, Nc3, Qe7; 9, Be3, Bxe3; 10, Qxe3, Nxc3; 11, Qxe7+, Kxe7; 12, bxc3, Be4; 13, Ng5!?, Bxd5; 14, O-O-O!?, Bxa2; 15, Kb2!, Be6; 16, f5!, Bxf5; 17, Bc4, Nc6 (this is now a little late. Instead of the Bishop's tour, which admittedly garnered pawns, Black would have been better advised to develop his pieces. As it is they now stand around impotently while the Black Kings heads back to the box!); 18, Nxf7, Rhe8; 19, Rhe1+, Kf6; 20, Rf1 (19, ... Kf8; is also met by 20, Rf1), Kg6; 21, g4!, Bxg4 (if 21, ... Be6; say, then 22, h4! threatening mate transposes to similar positions as in the game); 22, Rd5 (threat 23, Rg5 mate. If 22, ... h5?; 23, Bd3+, Bf5; 24, Rdx5, Kh7; 25, Rxh5+, Kg8; 26, Rh8 mate. Or 22, ... h6; 23, Bd3+, Bf5; 24, Rdx5, Kh7; 25, Rg5+, Kg8; 26, Nxe6+, Kh8; 27, Nf7+, Kg8; 28, Rh5 and Black loses material), (1:0).

THIS WEEK a results service and an imperfect one at that! I can mention (almost like gossip) that Hampshire played Dorset last week and certainly won the first-team match comfortably, while the second team were unable to stave off a comprehensive thrashing. In the next column I hope to give full details of the encounter.

Based on this week's clutch of results from the local league I can predict the Championship will be very open this year . . . at least until Gosport get their act together!

DIVISION I

MANGLERS A 1, COSHAM A 2: 1, K. D. F. Gregory v. S. Dean (u); 2, E. N. Holland 1, A. F. C. Carter 0; 3, M. Flower v. D. Gibson (u); 4, D. Hannam 0, A. D. Crossin 1; 5, A. G. Scoffin v. C. W. Bryan (u); 6, R. Davies 0, R. R. Carter 1.

IBM A 1, PORTSMOUTH A 1: 1, J. G. Nicholson 1, G. E. Oswald 0; 2, W. W. McDougall v. D. C. Spurgeon (u); 3, J. F. Wheeler v. I. R. Bradley (u); 4, R. E. Hartley v. R. V. Puchards (u); 5, S. J. Smith v. M. C. Hagan (u); 6, G. D. Jetha 0, S. Kent 1.

A very rare loss in the league by Graeme Oswald which probably indicates that IBM A will be in strong contention for the Championship.

FAREHAM A 3, GOSPORT A 2: 1, A. R. Corkett v. R. Marsh (u); 2, T. R. S. Pavlovic 0, M. L. Newbury 1; 3, D. Evans 1, M. D. Smith 0; W. H. Silber 1, D. A. Bloxson 0; 5, M. M. Street ½, D. J. White ½; 6, D. W. Coates ½, H. Golding ½.

And with Gosport A (the defending champions) unable to find their full side this result might make this season's competition more open.

DIVISION IV

IBM C 3½, Petersfield B 2½: 1, R. Hillier ½, B. Chambers ½; 2, G. Brenner 1, D. Ainslie 0; 3, A. Picton 0, P. Flack 1; 4, S. Hartley ½, D. Hague ½; 5, R. Hagon 1, R. Sweetinburg 0; 6, R. Williams ½, T. Hampton ½.

As we have quite a number of local teams involved in the County League I hope to be able to report their results and progress on a fairly regular basis. To that end Brian Cochran, the controller, has made available details of the first two rounds.

HAMPSHIRE LEAGUE

Division I

BASINGSTOKE A 5, PORTSMOUTH A 0: 1, P. Thompson 1, J. Stewart 0; 2, J. Fowler 1, D. Jeffery 0; 3, K. Hyde 1, S. Kent 0; 4, Ashmore 1, R. Prince 0; 5, E. Smith 1, L. Cunningham 0.

G.B.E. Andover A ½, IBM 4½: 1, S. Knox ½, W. McDougall ½; 2, D. F. Thompson 0, J. F. Wheeler 1; 3, T. Gray 0, S. Smith 1; 4, K. V. Gadd 0, R. Hartley 1; 5, F. Kelly 0, S. Hartley 1.

UNIVERSITY A 4½, BASINGSTOKE A ½.

GOSPORT A 4, G.B.E. ANDOVER A 1: 1, J. H. Jones ½, S. W. Know ½; 2, R. Marsh 1, D. F. Thompson 0; 3, Pezet ½, T. Gray ½; 4, M. D. Smith 1, K. V. Gadd 0; 5, D. A. Bloxson 1, F. Kelly 0.

IBM 3, UNIVERSITY 2: 1, K. D. F. Gregory ½, R. C. Noyce ½; 2, J. F. Wheeler 1, A. Faller 0; 3, S. Smith ½, J. Hopkins ½; 4, R. Hartley 1, P. House 0; 5, G. Jetha 0, K. Byard 1.

IBM lead the table with two wins, followed by Gosport one win and a draw.

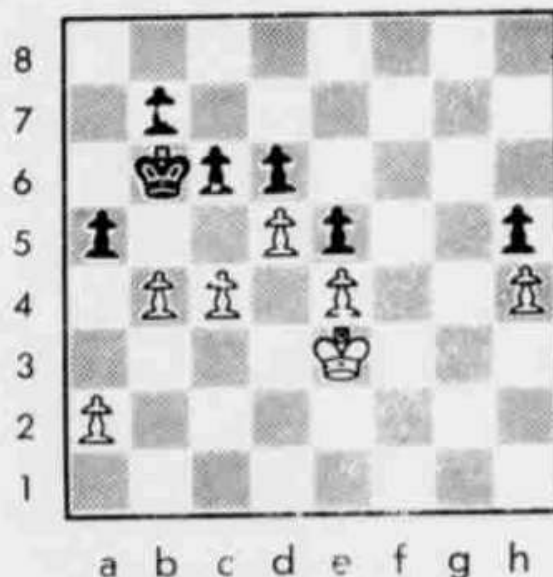
Division II

SOUTHAMPTON 3, G.B.E. ANDOVER B 2, PORTSMOUTH B 2½, LEIGH PARK 2½: 1, M. Hagan 0, D. Bennett 1; 2, S. Kent 1, K. Allen 0; 3, B. Cochran 1, J. Mortlock 0; 4, J. Stewart ½, J. Sexton ½; 5, F. Guy 0, S. Scott 1.

BASINGSTOKE B 3½, PORTSMOUTH B 1½: 1, P. Thompson 0, M. Hagan 1; 2, E. Smith ½, S. Kent ½; 3, F. Bowsey 1, J. Stewart 0; 4, J. French ½, R. Prince 0; 5, M. Bowhay 1, F. Guy 0.

SOUTHAMPTON 3, LEIGH PARK 2: 1, J. Stenhouse 1, S. LeFevre 0; 2, P. Symington ½, D. Bennett ½; 3, R. Perrin ½, N. LeFevre ½; 4, D. Webb 1, J. Mortlock 0; 5, A. Summers 0, J. R. Sexton 1.

This week a position from the Hampshire v. Dorset match. Black has just played 39, . . . a7-a5; and White has seconds to reach the time-control at move 42. No doubt pressure from the clock accounted for White's blunder, nevertheless how should he have continued?



White to move

CHESS NOTES by J.H.J.

Border battle not as clear as black and white

WHEN Hampshire and Dorset meet at Minstead in the New Forest, I can never be certain which is the home team as both sides are involved in more than a measure of travel.

After an interesting struggle, the first team managed a substantial 10-5 victory (with one game for adjudication — a probable loss). However, the second side were crushed 5-11.

As the second team actually outgraded Dorset by 32 points this was a particularly disappointing result: clearly very few of the team played at their full potential!

Details:

HAMPSHIRE 10, DORSET 5: 1. J. Corfield 1, S. J. Shutler (200) 0; 2. G. H. Bennett 1, R. M. Pegg (183) 0; 3. A. Fallor 1, M. J. Simons (-) 0; 4. M. L. Newbury ½, M. R. Charter (185) ½; 5. J. H. Jones 1, M. J. Freeman (196) 0; 6. S. Dean 0, S. C. E. Robinson (167) 1; 7. E. Godber ½, I. C. Clark (173) ½; 8. S. W. Knox 0, J. F. Catchpole (167) 1; 9. S. P. Pezet 0, M. J. Roth (166) 1; 10. E. Holland v. A. J. Pleasants (160) (a); 11. J. R. Poulton 1, M. P. Waddington (165) 0; 12. I. A. Stenhouse 1, R. Burton (155) 0; 13. J. R. Neil 1, T. E. Simms (159) 0; 14. J. Hopkins (, R. K. Lowen (154) 0; 15. T. I. Cowling 0, J. C. Rowley (154) 1; 16. P. Miller 1, H. D. Needham (151) 0.

HAMPSHIRE II 5, DORSET II 11: 1. K. Cornelius 0, D. K. Bevis (150) 1; 2. M. R. Baker ½, M. W. Adams (149) ½; 3. L. C. Walters 0, A. Millers (150) 1; 4. M. C. Hagan 0, J. F. Tilney-Bassett (144) 1; 5. P. C. Symington ½, P. Brackner (141) ½; 6. D. Culliford 1, J. Ounsted (133) 0; 7. D. F. Thompson 1, D. J. Cannings (133) 0; 8. J. M. D. Gould 0, S. A. Crane (122) 1; 9. P. J. Hebblethwaite ½, P. Foster (134) ½; 10. M. Connor 1, M. J. Sales (130) 0; 11. A. D. Smith ½, D. G. Rapkins (126) ½; 12. A. N. Mills 0, G. A. Hunwicks (126) 1; 13. S. D. LeFevre 0, M. G. Bond (125) 1; 14. H. Golding 0, A. D. Primett (125) 1; 16. J. Steward 0, W. J. Kelly (124) 1; 16. Q. Winch 0, C. Ambrose (108) 1.

Should you feel inclined to offer your services for the County, the match captain, Peter Marshall, can be reached on 0703-774464. Our next fixture is against Wiltshire today.

Last week I left you with 8/1p6/1kpp4/p2Pp2p/1PP1P2P/4K3/P7/8 and Black had just played 39. . . . a7-a5; and I asked you what should White try.

Bearing in mind White's parlous clock condition (only seconds remained to the time-control) he actually played 40. c5+, dxc5; 41. d6, cxb4; (oh, of course after 42. d7, Black simply plays Kc7), 42. Kd), c5; 43. Kc4, (White continues from sheer inertia) Kc6; 44. d7, Kxd7; 45. Kxc5, Ke6; (0:1).

So, what should White try?

40. bxa5+, Kxa5; 41. c5, dxc5; 42. d6, Kb6; 43. a4!, c5; 44. a5+, Kxa5; 45. d7, (1:0).

Black can improve his play with 40. bxa5+, Kc5; 41. dxc6, Kxc6; (After 41. . . . bxc6; 42. a3!, d5; 43. cxd5, cxd5; 44. exd5, Kxd5; 45. a6, Kc6; 46. Ke4 and White wins) 42. Kd3, Kc5; 43. Kc3, Kc6; 44. Kb4, Kd6; 45. Kb5, Kc7; 46. a3, Kc8; 47. Kb6, Kb8; 48. a6, bxa6; 49. Kcb, (1:0).

Then I further studied the position and came up with 40. bxa5+, Kxa5; 41. c5, cxd5! (threat dc+); 42. exd5, dxc5; 43. Ke4, Kb6; (if 43. . . . c4; 44. d6, Kb6; 45. Kxe5, c3; 46. Ke6, c2; 47. d7, c1=Q; — NOT Kc7??); 48. Ke7, c1=Q; 49. d8=Q+, Kc6; 50. Qc8+, — 48. d8=Q+ and this is drawn?); 44. Kxe5, Kc7; 45. d6+, Kd7; 46. Kd5, b6; (46. . . . c4; 47. Kxc4, Kxd6; 48. Kb5, Kc7; 49. Kc5 and White wins by capturing the h-pawn); 47. a3, Kd8; 48. Kc4, Kd7; 49. Kd5 with a draw by repetition.

Note that 48. Kc6?? loses for White after 48. . . . c4 as Black Queens and prevents White's pawn reaching that eighth rank.

I went on for a further 22 moves to determine that White wins if Black tries 47. . . . c4; as White maintains the opposition to force a break to either wing to capture each pawn in turn.

No wonder White failed to find the most active line: it was quite difficult without the pressure of tempus fugit!

For the Hampshire Individual — November 21, 22, 28, 29 — contact Iain Stenhouse, 48, Harefield Road, Southampton SO2 3TH. The entry fee is £3.75 but you must be a member of the County Association.

CHESS NOTES by J.H.J.

LAST Saturday Hampshire travelled to Devizes for their match against Wiltshire. The first team match proved to be quite a struggle and currently stands at 7½-6½ to us, although the two adjudications are in our favour. Perhaps my comments about the last county seconds game was taken to heart, for this time we ran out comfortable 10-6 winners.

1 M. J. Yeo 1, R. Haydon (195) 0; 2 J. H. Jones 0, T. Headlong (195) 1; 3, M. I. Walker 0, J. Garwell (192) 1; 4, M. L. Newbury 1, S. Kyrianides (204) 0; 5, S. Dean 0, D. Perreh (182) 1; 6, J. Hopkins 1, D. O'Byrne (157) 0; 7, J. A. Stenhouse v. A. W. Champion (157) (a); 8, A. D. Crossin ½, D. E. Ward (157) ½; 9, S. W. Knox 1, R. W. Rendell (165) 0; 10, J. R. Poulton 1, A. Ponting (108J) 0; 11, S. P. Pezet ½, M. Strange (149) ½; 12, P. Miller 0, R. Walker (-) 1; 13, T. I. Cowling 0, M. Webb (150) 1; 14, D. R. Neil v. P. Gill (140) (a); 15, L. C. Walters ½, E. Bromilow (149) ½; 16, M. R. Baker 1, M. Croasdale (-) 0.

And the second team results: 1, M. C. Hagan 1, M. Lovell (135) 0; 2, B. P. Sweeney ½, R. Wortley (140) ½; 3, S. J. Kent ½, E. J. Milward (129) ½; 4, J. Monk 1, E. Hartford (126) 0; 5, K. R. Noyce ½, D. Heywood (131) ½; 6, D. Culliford 0, R. Wardell (146) 1; 7, D. F. Thompson 1, A. Hurst (103) 0; 8, A. D. Smith 1, R. Carver (138) 0; 9, A. N. Mills 1, H. S. Bahia (121) 0; 10, K. Cornelius 1, T. M. Flanagan (-) 0; 11, P. J. Hebblethwaite ½, N. Ashay (117J) ½; 12, C. Blake 1, H. Light (-) 0; 13, H. Prior 1, M. Tomalin (-) 0; 14, C. W. Laxton 0, D. Pott (126) 1; 15, Q. Winch 0, G. S. Ashby (107) 1; 16, R. Prince 0, S. Connor (115) 1.

Here's a game from the second team match. White: H. Light. Black: C. Blake. The comments are by the winner.

1, e4, c5; 2, Nc3, Nc6; 3, g3, b6; 4, Bg2, Bb7; 5, Nf3, Nf6; 6, d3, e6; 7, b3, Be7; 8, 00, 00; 9, Bb2, Re8; 10, e4, d5! (Attacking White's pawn centre); 11, cxd5, exd5; 12, e5, Ng4; 13, Re1, d4; 14, Nb5, Qd7 (Black cannot take immediately); 15, a4, Bf8; 16, Na3, (rather passive) Ngxe5; 17, Ng5?, h6; 18, Ne4, f5; 19, f4, fxe4; 20, fxe5, e3 (on with the pawn!); 21, Nc4, Nxe5 (another pawn goes down); 22, Nxe5, Rxe5; 23, Bxb7, Qxb7; 24, Qe2, a5 (preventing b4); 25, Rf1, Rae8; 26, Rf3, Qd5; 27, Ra3, Qe6; 28, Ba1, Qg4; 29, Ra2, (White cannot play 29, Rxf8+, Rxf8; 30, Qxg4, e2!), Qe6; 30, Rb2, Bd6; 31, Rb1, Rb8; 32, Rb2, b5; 33, axb5 (maybe White should ignore this exchange), Rxb5; 34, Qd1, Qd5; 35, Kf1??, e2+ (wins!); 36, Rxe2, Qf3+ and White resigned.

Quite a nice game by a youngster who will be 11 at the end of the year. Come to think of it I could have done with some of his advice in my own game!

DIVISION I

All these matches have been completed after played-on games were resolved.

Manglers A 3, Cosham A 3 (1, K. D. F. Gregory 1, S. Dean 0; 3, M. Fowler 0, D. Gibson 1; 5, A. G. Scoffin 1, C. W. Bryan 0).

IBM A 3½, Portsmouth A 2½ (2, W. McDougall 1, D. C. Spurgeon 0; 3, J. F. Wheeler 0, I. R. Bradley 1; 4, R. E. Hartley ½, R. V. Puchades ½; 5, S. J. Smith 1, M. C. Hagan 0).

Fareham A 3½, Gosport A 2½ (1, A. Corkell ½, R. Marsh ½).

So Gosport's run of 12 unbeaten matches in the P.D.L. is brought to an end.

DIVISION II

IBM B 2½, Cosham B 3½ (1, S. J. Smith 1, G. Train 0; 2, S. Prince 0, M. R. Baker 1; 3, Default 0, A. D. Smith 1; 4, A. J. Wilkinson ½, G. F. Abercrombie ½; 5, H. Alston 1, A. F. Langley 0; 6, K. Gledstone 0, T. W. Woodroffe 1).

Fareham B 1, Portsmouth B 2 (1, J. Coburn 1, S. J. Kent 0; 2, M. Street 0, M. C. Hagan 1; 3, D. Coates v. B. K. Maund (u); 4, J. Monk v. D. Jeffery (a); 5, M. Butler 0, B. Cochran 1; 6, J. A. Wykes v. C. W. Laxton (u).

DIVISION III

Fareham C 5, Portsmouth D 1 (1, M. J. Butler 1, B. Cochran 0; 2, A. Chandler ½, D. Jeffery ½; 3, A. Cagnasso ½, R. Prince ½; 4, R. C. Clark 1, R. White 0; 5, A. F. Stroud 1, P. Rogers 0; 6, C. Lusher 1, E. Nancarrow 0).

Portsmouth C 1½, Paulsgrove A 4½ (1, B. K. Maund ½, P. McEvoy ½; 2, D. Bye 0, C. Smith 1; 3, C. W. Laxton 0, M. Baxter 1; 4, F. Guy 0, P. Sibley 1; 5, R. Nutland 0, S. Phillips 1; 6, M. Reeves 1, D. Worsfold 0).

DIVISION IV

Gosport C 1, Emsworth A 5 (1, H. Golding 0, D. tunks 1; 2, K. S. O. Smith ½, M. Body ½; 3, P. Groth 0, G. Vosper 1; 4, S. Tovey 0, A. Quick 1; 5, J. Penn ½, K. Hyman ½; 6, R. Strong 0, D. Pollard 1).

DIVISION V

Gosport D 3½, Leigh Park B 2½ (1, J. Penn 0, D. Bennett 1; 2, R. Russell 1, Default 0; 3, J. Adams 0, D. Mortlock 1; 4, A. Elbourn 1, K. Allen 0; 5, R. Brierley 1, A. Charlwood 0; 6, P. Williams ½, V. Agins ½).

Portsmouth E 2, Emsworth B 4 (1, C. W. Laxton 1, A. Quick 0; 2, P. Rogers 0, B. Walker 1; 3, R. Nutland 0, A. J. Vosper 1; 4, E. Nancarrow 0, V. Phillips 1; 5, F. Guy 0, A. Dann 1; 6, R. White 1, Default 0).

I have received details of the Barclays Bank Open Junior Tournament organized by the County Association over the week-end of December 4-6 at Oak Farm School, Farnborough. There will be three sections: Under 18; Under 14; and Under Ten (with ages calculated as at August 31). Having respective entry fees of £6, £5 and £4.

A prize fund totalling £310 is on offer so hurry to get your entry in by December 1 to L. T. Walker (who will be the Tournament Director), 3, Rowley Drive, Botley SO3 2SN. Telephone (04892) 6528.

Chess notes by J.H.J.

REGULAR readers will be aware that I play both in the P.D.L. and the Southampton League. One advantage of this arrangement is that I am able to experiment with openings in one league as a prelude to their use in the other. Also I meet a greater variety of (unusual) defences which gives me encouragement to investigate these variations analysed at some depth in books and monographs devoted to theory.

White: J.H.J. Black: J. Godber (165J).

1, e4, e5; 2, Nf3, Nc6; 3, Bb5, f5!?!; (This is in vogue with members of the Southampton club) 4, d4, (Other alternatives are 4, Nc3, or the interesting 4, Qe2) fxe4; 5, Ne5?!. (This "natural" move should lose by force after 5, . . ., Nxe5; 6, dxe5, c6; with the mundane threat of Qa5 + winning the e-pawn, and then, presumably, the game. White can aim for complications with 7, Nc3, cxb5; 8, Nxe4, d5; 9, exd6, Nf6; 10, Ng5, Qa5 +; 11, Bd2, b4!; but has insufficient compensation for his material deficit) Nf6?; 6, Bg5, Be7; 7, Bxf6(!), Bxf6; 8, Nc3(!), Bxe5; (Black suffers after 8, . . ., OO; from 9, Bc4 +, while 8, . . ., Nxe5; 9, dxe5, Be7; — 9, . . ., Bxe5?? 10, Qh5 +, — is to White's advantage) 9, Bxc6, dxc6; 10, Qh5 +, g6; 11, Qxe5 +, Kf7; (Now White's attack plays itself) 12, OO, Bf5; 13, d5(!), c5; 14, d6, c6; 15, Qf4, Kg7; 16, g4, Bd7; 17, Nxe4, Rf8; 18, Qe5 +, Kg8; (Black has been forced to artificially castle but this does him no good) 19, g5, Bf5; 20, Nf6 +, Kf7; 21, Rhe1, Re8; 22, Nxe8, (1:0) (Black will either lose his King or, according to choice, his Queen material and then King).

The apparent run of poor form by Gosport A in the P.D.L. continued when they failed to beat Portsmouth A. On top board Bob Nouce omitted to play Rh3 at the opportune moment, and, although the attacking plan wasn't concrete, it was obvious in the replay that Graeme Oswald's defensive resources were very limited: the attack would have prevailed. Then Steve Pezet overlooked the mundane Nxe5 which lost him a pawn and then the game. Still Portsmouth played very solidly, and notwithstanding they deserved their victory.

DIVISION I

Fareham A 1½, Cosham A 2½: 1, A. R. Corkett 1, D. Gibson 0; 2, T. R. S. Pavlovic 0, S. Dean 1; 3, D. Evans 0, A. F. C. Carter 1; 4, J. Monk v. A. D. Crossin (u); 5, W. H. Silber v. C. W. Bryan (u); 6, J. A. Coburn ½, A. F. Langley ½.

IBM A 2½, Manglers A 1½: 1, W. M. McDougall v. K. D. F. Gregory (u); 2, J. F. Wheeler 1, E. N. Holland 0; 3, R. E. Hartley v. D. Hannam (u); 4, P. J. Burns 1, A. G. Crocker 0; 5, S. J. Smith ½, A. G. Scoffin ½; 6, G. D. Jeftha 0, K. J. Frisby 1.

Portsmouth A 4, Gosport A 2: 1, G. Oswald 1, R. C. Noyce 0; 2, D. Spurgeon ½, M. L. Newbury ½; 3, I. Bradley ½, J. H. Jones ½; 4, R. Puchades 1, S. P. Pezet 0; 5, M. Hagan ½, D. J. White ½; 6, S. Kent ½, D. A. Bloxson ½.

DIVISION II

Gosport B 3, Fareham B 1: 1, D. A. Bloxson v. J. Monk (a); 2, D. J. White 1, D. Coates 0; 3, B. E. Gale 1, M. Butler 0; 4, K. S. O. Smith 1, T. A. Wykes 0; 5, H. Golding 0, A. Chandler 1; 6, A. Elbourn v. R. Clark (a).

Fareham B stand 2½ each with Portsmouth B after these played-on games were resolved: 3, D. W. Coates 1, B. K. Maund 0; 6, T. A. Wykes ½, C. W. Laxton ½.

DIVISION III

Petersfield A 2½, Plessey 2½: 1, S. Le Blancq 1, R. T. F. Williams 0; 2, R. H. Storr-Best 0, P. A. Rayment 1; 3, P. Flack 0, D. G. Foale 1; 4, G. R. Dent 1, C. Wood 0; 5, D. Collinson v. P. R. Maddocks (a); 6, B. W. Chambers ½, A. C. Rodger ½.

DIVISION V

Portsmouth E 4, Paulsgrove B 2: 1, D. Bye 1, J. Taylor 0; 2, P. Rodgers 0, M. Sammit 1; 3, R. Nutland 1, D. Murton 0; 4, F. Guy 1, G. Clair 0; 5, R. White 0, J. Sims-Mindry 1; 6, L. Davidson 1, J. Gutteridge 0.

Finally I will leave you with this study by J. Brenew, 1934. It is White to move and draw.



White to move.

Chess notes by J.H.J.

In my last column, I left over the position 3N4/8/8/3b4/6K1/5p2/8/71, a study by Brenew, and it was White to move and draw. The position is unusual in that a "stalemated" Knight is used to achieve a "stalemate" of the enemy King.

1, Kg3!, (with the simple threat to blockade the f-pawn) Kg1; 2, Ne6! (clearly the Knight is inviolate) f2; 3, Nf4!, (threat 4, Nh3+. If Black counters this by 3, . . . , Be6!; then White continues 4, Ne2+, Kf1; 5, Nf4, Bf5!; 6, Kf3!! and this position is drawn by perpetual or Black will lose his pawn) f1=Q; 4, Nh3+, Kh1; 5, Nf2+, Kg1; this position is drawn by repetition or by insufficient material if Black plays QxN+.

Keith Gregory, who is the Controller of the Cole Cup (the League Knockout Championship), has provided me with the details of the first round of this season's competition.

PAULSGROVE B 0, FAREHAM B 5 — 1, J. Taylor 0, J. Monk 1; 2, J. Gutteridge 0, J. Coburn 1; 3, G. Clair 0, D. Coates 1; 4, L. Diamond 0, T. Wykes 1; 5, F. Cox 0, A. Stroud 1.

EMSWORTH A 5, PORTSMOUTH C 0 — 1, M. Body 1, D. Jeffery 0; 2, D. Tunks 1, R. Prince 0; 3, G. Vosper 1, P. Rogers 0; 4, A. Quick 1, F. Guy 0; 5, K. Hyman 1, E. Nancarrow 0.

PORTSMOUTH B 1, MANGLERS A 4 — 1, B. Sweeney 0, K. Gregory 1; 2, N. Purkis 0, D. Hannam 1; 3, B. Cochran 0, M. Fowler 1; 4, D. Bye 0, A. Scoffin 1; 5, W. Laxton 1, N. Phillips 0.

IBM C 2, COSHAM B 3 — 1, A. Wilkinson 0, M. Baker 1; 2, R. Hillier 0, A. Smith 1; 3, G. Brenner 1, A. Langley 0; 4, A. Picton 1, T. Woodroffe 0; 5, S. Hartley 0, K. Nevois 1.

The draw for round two, which must be completed by January 10, pairs the following teams: Fareham A v. Paulsgrove A; Petersfield v. Fareham A; Gosport A v. Manglers B; Fareham C v. Emsworth; Manglers A v. IBM A; Plessey v. Cosham A; Leigh Park v. Portsmouth A; and Cosham B v. Gosport B.

The choice match looks like the Manglers v. IBM encounter as both clubs are past winners of this competition, otherwise I expect most results to go much to form. Incidentally Keith Gregory has predicted that the final will be contested between . . . but in fairness I will only tell you his favourites in the event that they get eliminated!

John Wheeler, who is the League Secretary and no mean player for IBM and Devon, has sent me the conclusion of his game from the recent match v. Manglers A.

White: J. F. Wheeler. Black: E. Holland. Position from the diagram with notes based upon those of the winner.

20, Rxf(!), Kxf6; 21, Qxh6, Ke7; (Black will be forced to this square in any case. Black could have tried 21, . . . , Rae8; but after 22, Qh7(!), Ke7; 23, Nxf6+, Kd8; 24, Nxf8, Rxf8; 25, Rf1, White is two pawns ahead and should win easily) 22, Rf1, Rg8; 23, Qh7, Raf8; 24, Rxf7+; 25, Qxg8, (White now has two pawns for the exchange, and the attack continues) Qd7; 26, Nxf6+, Kf6; 27, Nxf8, Qxa4; (27, Qc8 would last longer but after 28, Qg6+, Ke7; 29, Ne6, the White King-side pawns advance. 27, Qe8 also doesn't appear to save Black.) 28, Ne6, (threatening 29, . . . , Qg5 mate!) Qd1+; 29, Bf1, Qd2; 30, g4, Qe3+; 31, Kh1, (and, as Black was unable to prevent 32, g4+, Ke7; 33, Qd8, he resigned) (1:0).



CHESS NOTES by J.H.J.

SOME while ago the county match against Cornwall had to be cancelled, because of rain! Peter Marshall, the county match captain, has sent me a revised fixture list for the remainder of the season.

This is: **January 9** v. Devon (Ilminster); **February 20** v. Gos. (Devizes?); **February 27** v. Cornwall (Exeter?); **March 12** v. Somerset (Shaftesbury?) and a "friendly" against the Civil Service on **March 26** in London.

All these matches should be quite tough unless Hampshire field their best players. Should you wish to play you can offer your services to Peter who can be contacted on 0703 774464.

County registrations have been progressing quite well but Peter Marshall (this time wearing the hat of registration officer) informs me that there was an error on forms sent to clubs affiliated to W.E.C.U.

The definitive date for a junior is birth on or after 01.09.69 and not 01.09.71 as shown on the printed registration forms. Clubs should draw this error to the attention of their own officer(s).

The tardiness of the postal system at this time of year has meant holding results for a subsequent deadline. This week I am able to clear a backlog of P.D.L. results.

DIVISION I

Played-on games which have been resolved, produced the following match results.

Fareham A 2½, Cosham A 3½: 4, J. C. Monk 1, A. D. Crossin 0; 5, W. H. Silber 0, C. W. Bryan 1.

IBM A 3, Manglers A 3: 1, W. McDougall 0, K. D. F. Gregory 1; 3, R. E. Hartley ½, D. Hannam ½.

DIVISION II

Adjudications resolved the following two matches.

Fareham B 2½, Portsmouth B 3½: 4, J. C. Monk 0, D. Jeffery 1.

Gosport B 3, Fareham B 3: 1, D. A. Blossom 0, J. C. Monk 1; 6, A. Elbourne 0, R. C. Clark 1.

IBM B 4½, Leigh Park A 1½: 1, S. J. Smith 1, S. D. Le Fevre 0; 2, G. Jefftha 0, D. Bennett 1; 3, A. J. Wilkinson ½, M. G. Le Fevre ½; 4, A. Picton 1, S. J. Scott 0; 5, H. Alston 1, J. N. Mortlock 0; 6, R. Hagon 1, J. R. Sexton 0.

Fareham B 4½, Cosham B 1½: 1, J. Monk ½, G. Train ½; 2, D. Coates ½, A. D. Smith ½; 3, M. Street ½, M. R. Baker ½; 4, T. A. Wykes 1, G. F. Abercrombie 0; 5, A. Chandler 1, A. F. Langley 0; 6, M. Butler 1, K. S. Nevols 0.

Leigh Park A 3, Gosport B 3: 1, D. Bennett 0, D. White 1; 2, S. D. Le Fevre 0, P. Groth 1; 3, N. G. Le Fevre 1, H. Golding 0; 4, K. Allen 1, R. Brierley 0; 5, R. Smith ½, J. Penn ½; 6, J. N. Mortlock ½, A. Elbourne 0.

DIVISION III

Petersfield A 2½, Plessey 3½ was the final result after this adjudication: 5, D. Collinson 0, P. R. Maddocks 1.

Plessey 2½, Portsmouth C 2½: 1, R. T. F. Williams v. S. Garside (a); 2, D. G. Foale 0, B. K. Maund 1; 3, C. Wood ½, D. Bye ½; 4, P. R. Maddocks 1, W. Laxton 0; 5, A. C. Rodger 1, F. Guy 0; 6, J. B. S. Cairns 0, M. Reeves 1.

Paulsgrove A 2½, Fareham C 2½: 1, P. McEvoy 1, M. J. Butler 0; 2, C. Smith ½, A. Chandler ½; 3, S. Phillips v. A. Cagnasso (a); 4, P. Sibley ½, A. F. Stroud ½; 5, D. Worsfold 0, R. C. Clark 1; 6, J. Taylor ½, B. Massey ½.

DIVISION IV

Manglers B 2½, IBM C 3½: 1, K. J. Frisby 0, A. Wilkinson 1; 2, A. G. Crocker 0, R. Hillier 1; 3, E. M. Holland ½, G. Brenner ½; 4, R. Davies 1, A. Ball 0; 5, J. A. Brassell 0, S. Hartley 1; 6, M. G. Crocker 1, R. Williams 0.

Emsworth A 4, IBM C 2: 1, M. Body ½, G. D. Jefftha ½; 2, G. Vosper 0, R. J. G. Hillier 1; 3, A. Quick 1, G. Brenner 0; 4, R. Perry ½, A. Ball ½; 5, B. Walker 1, A. Picton 0; 6, K. Hyman 1, default 0.

Gosport C 4½, Petersfield B 1½: 1, K. Smith ½, B. Chambers ½; 2, H. Golding 1, P. Flack 0; 3, P. Groth 1, P. Mayer 0; 4, J. Penn 1, D. Ainslie 0; 5, S. Tovey 0, D. Collinson 1; 6, R. Strong 1, G. Cobb 0.

DIVISION V

Emsworth B 3, Leigh Park B 3: 1, A. Quick 1, K. Allen 0; 2, A. Whitehead ½, J. Mortlock ½; 3, D. Pollard 1, J. Sexton 0; 4, V. Phillips 0, F. Sandham 1; 5, A. Vosper ½, V. Agius ½; 6, P. Britt 0, R. Bennett 1.

Finally the diagram represents an exercise in deduction (that a computer would readily solve!) Who is to move . . . and why?

. . . to move?



LAST WEEK I left you with a diagram that might be reached after the initial moves: 1, e4, e5; 1, Nf3, Nc6; 3, Nc3, Nf6; 4, Bb5, Bb4; 5, O-O.

You will have noticed that the Black King is missing but that's because the player of Black has it in his hand and is preparing to castle (well, move his King, anyway!).

So, it is Black's move.

Wrong!

It is actually White's move!! Why? Because Black has noticed (along with the Reader) that the board is the wrong way round (the White square must be the right-hand corner) and therefore the game must be restarted as fewer than six moves have been played.

Results from the opening round of the P.D.L. Individual championship went very much to form although informed sources tell me that the defending champion (K. Gregory) had more of a struggle than he anticipated.

B. Maund 0, W. Laxton 1; A. Carter 1, J. Coburn 0; M. Baker 0, D. Tunks 1; B. Cochran 0, K. Gregory 1; C. Wood 1, M. Baxter 0.

The draw for round 2, which must be completed by January 2, has kept my "big two" (Carter and Gregory) apart.

The draw is Gregory v. Wood; Laxton v. Carter; Tunks v. Cochran; Baxter v. Maund and Coburn v. Baker.

DIVISION I

Cosham A 2½, Portsmouth A 3½: 1, S. Dean 0, G. Oswald 1; A. F. C. Carter 1, D. Spurgeon 0; 3, D. Gibson 0, I. Bradley 1; 4, G. F. Abercrombie ½, R. Puchades ½; 5, C. Bryan 1, M. Hagan 0; 6, G. Train 0, S. Kent 1.

Manglers A 4, Fareham A 2: 1, K. D. F. Gregory 1, W. H. Silber 0; 2, E. N. Holland ½, J. R. Poulton ½; 3, M. Fowler ½, D. Evans ½;

4, D. Hannam 0, J. A. Coburn 1; 5, A. G. Scoffin 1, D. W. Coates 0; 6, E. M. Holland 1, A. F. Stroud 0.

Gosport A 2½, IBM A 2½: 1, J. H. Jones ½, J. G. Nicholson ½; 2, S. P. Pezet v. W. M. McDougall (u); 3, D. J. White 0, J. F. Wheeler 1; 4, M. D. Smith 1, P. J. Burns 0; 5, P. Groth ½, S. J. Smith ½; 6, K. S. O. Smith ½, A. J. R. Wilkinson ½.

DIVISION V

Leigh Park B 3½, Portsmouth E 2½: 1, D. Bennett 1, D. Bye 0; 2, K. Allen ½, J. Davison ½; 3, R. Smith 1, P. Rogers 0; 4, J. Sexton 0, M. Reeves 1; 5, F. Sandham 1, F. Guy 0; 6, V. Agius 0, S. Garside 1.

And, to finish, a study by L. I. Kubbel, 1929, with White to move and win. This is quite an interesting position well worth your effort even though the main line is eight moves long.

White to move.

CHESS NOTES

by J.H.J.



WIMBLEDON PARK SPORTS CENTRE
BOOKINGS TELEPHONE 01329 71111

The Centre will be **CLOSED** over the Christmas period:
AFTER 5 p.m. — THURSDAY, DECEMBER 24
ALL DAY — SATURDAY, DECEMBER 26
ALL DAY — SUNDAY, DECEMBER 27
AFTER 5 p.m. — THURSDAY, JANUARY 1
ALL DAY — FRIDAY, JANUARY 2

*A Merry Christmas
 Healthy New Year
 from Joe, Jim & the Staff*

NEW YEAR AEROBICS
 Every Thursday from 7.30-8.30 p.m.
AEROBICS with Gay
 Every Saturday during the Christmas holidays
SATURDAY CLUB (10-12 p.m.)
 Every Friday (10-12 p.m.)
 — For Senior Citizens

COMING SOON (February 1) — TUMBLE TOTS