

Fareham Chess Club has been knocked-out of the National Club Plate Competition by Chichester, having lost the second round match by $2\frac{1}{2}$ games to $3\frac{1}{2}$. Details (Chichester names first):- Bd.1. R.F.T. Williams 0, M.L. Newbury 1; Bd.2. R. Williamson 0, M.M. Street 1; Bd.3. C. Cropp 1, D.C. Goddard 0; Bd.4. C.R. Squires $\frac{1}{2}$, T.J. de Buriatte $\frac{1}{2}$; Bd.5. I. Richardson 1, R.C. Clark 0; Bd.6. J. Richmond 1, T.R. Marsh 0.

On board 5 of this match, Reg Clark (who had the White pieces) provides the following Hard Luck Story - having lost a piece early on but gained some compensation by way of greater mobility, the position shown in this week's diagram was reached after Black's 38th move. He would dearly have liked to play 39 R(1) - Q7, but realised to his discomfort that Black had on a rather pretty forced mate after 39.... P - N7+; 40. K x P, R - N1+; 41. K - B1, R - N8+; 42. K - K2, R - K8 mate. So as to give his K more room to escape he decided to play 39. P x P, but still lost in a few more moves.

I find this a most interesting position and ask the question - could White have done better? I would have thought that if he could capture both Black's isolated and advanced pawns, he was in with a chance of a draw (which would give Fareham a win on Board count).

Portsmouth & District League (Senior Section) match results :

Division 2 : Portsmouth C 2, Community Centre A 4

(P.K. Wells 0, K.D.F. Gregory 1; I.A. Welch 1, A.F.C. Carter 0; M.E. Vernon 0, W.D. Muir 1; M.J. Hampton 0, N. Colter 1; P.M. Spurgeon $\frac{1}{2}$, P.A. Rayment $\frac{1}{2}$; C. Smith $\frac{1}{2}$, J. Baker $\frac{1}{2}$.)

Division 3 : I.B.M. B $5\frac{1}{2}$, Polytechnic B $\frac{1}{2}$

(I. Upton 1, R.D. Hough 0; S. Hicks 1, B. May 0; M. Dillistone 1, R. Poole 0; A. Mackie $\frac{1}{2}$, P. Holsman $\frac{1}{2}$; C. Mann 1, P. Harrison 0; P. Burns 1, D. Gittings 0.)

Polytechnic B 3, I.B.M. B 3

(K. Clements 1, I. Upton 0; N.D. Argent 1, C. Mann 0; R.D. Hough 1, A. Mackie 0; R. Poole 0, M. Dillistone 1; P. Holsman 0, B. Pratt 1; A. Dennis 0, H. Oakley 1.)

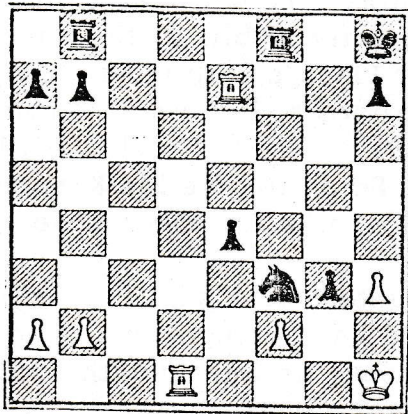
Division 4 : Leigh Park B,3, Plessey B 3

(R. Smith 1, C. Wheatley 0; J. Mortlock 0, C. Thomas 1; B. Mellor 0, A. Ball 1; K. Hepple 1, R. Armstrong 0; M. Arnold 1, S. Naim 0; A. Oakes 0, P. Rowson 1.)

/Continued

Finally, a short sharp game between Liu Wen Che (People's Republic of China) and Donner (Holland) :

1. P - K4 P - Q3; 2. P - Q4 N - KB3; 3. N - QB3 P - KN3; 4. B - K2 B - N2;
5. P - KN4 P - KR3; 6. P - KR3 P - B4; 7. P - Q5 O - O; 8. P - KR4 P - K3;
9. P - N5 P x NP; 10. P x NP N - K1; 11. Q - Q3 P x P; 12. Nx P N - QB3;
13. Q - KN3 B - K3; 14. Q - R4 P - B4; 15. Q - R7+ K - B2; 16. Q x P+!
- K x Q; 17. B - R5+ K - R2; 18. B - B7+ B - R3; 19. P - N6+ K - N2;
20. B x B+ and Black resigns.



J.E.C.G.