

93

It will be seen from the Tables of the top three Divisions of the Portsmouth & District League shown below that whereas there are only 2 teams seriously contending for promotion in Divisions 2 and 3, the situation in Division 1 is much more open. Results:-

Division 1: I.B.M. A 3, Fareham A 3  
 (W. McDougall 1, M. Newbury 0; J.F. Wheeler 1, M.M. Street 0;  
 R.E. Hartley 0, W.H. Pratten 1; I. Upton 0, W.H. Silber 1; S.Hicks 1,  
 D.C. Goddard 0; M. Dillistone 0, T.J. de Buriatte 1).

Division 2: Fareham B 2½, Portsmouth C 3½  
 (R. Perrin 0, P.K. Wells 1; R.C. Clark ½, I.A. Welch ½; J.E.C. Grant 1,  
 P.M. Spurgeon 0; A. Lancashire 0, M.E. Vernon 1; C.E. Frazer 0, M.J. Hampton 1;  
 C.V. Fairall 1, G.D. Scotney 0)

Division 3: I.B.M. B 3½, Fareham C 2½  
 (I. Upton 1, R.A. Kane 0; S. Hicks ½, A. Wykes ½; G. Jeftha 0, C.V. Fairall 1;  
 M. Dillistone ½, K. Reed ½; A.P. Mackie ½, D. Coates ½; P.J. Burns 1, E. Judd 0.)

Leigh Park A 1, I.B.M. B 5  
 (N.G. Le Fevre 0, S. Hicks 1; S.D. Le Fevre 0, A.P. Mackie 1; R. Smith 0,  
 M. Dillistone 1; J.R. Mortlock 1, H. Oakley 0; M. Arnold 0, B. Pratt 1;  
 A. Oakes 0, P. Burns 1.)

Plessey A 5½, Polytechnic B ½  
 (F. Dingwall ½, K. Clements ½; R. Williams 1, R. Hough 0; J. Heath 1, J. May 0;  
 D. Foale 1, D. Pennells 0; E. Azulay 1, P. Holsman 0; G. Howells 1,  
 A. Westwood 0.)

TABLES

	<u>P</u>	<u>W</u>	<u>D</u>	<u>F</u>	<u>A</u>	<u>Pts</u>
<u>Division 1</u>						
Portsmouth A	4	3	0	14½	9½	6
Cosham A	4	3	0	14	10	6
IBM A	4	2	1	12½	11½	5
Gosport A	4	2	0	11	13	4
Fareham A	4	0	2	11	13	2
Cosham B	4	0	1	9	15	1
<u>Division 2</u>						
Community Ctr A	4	4	0	19	5	8
Portsmouth C	4	4	0	16	8	8
Fareham B	4	2	0	13	11	4
Polytechnic A	4	1	1	8½	15½	3
Portsmouth B	4	0	1	8	16	1
Gosport B	4	0	0	7½	16½	0

/Continued .....

	<u>P</u>	<u>W</u>	<u>D</u>	<u>F</u>	<u>A</u>	<u>Pts</u>
<u>Division 3</u>						
Plessey A	4	4	0	18½	5½	8
IBM B	4	3	0	15	9	6
Cosham C	4	1	2	13	11	4
Fareham C	4	1	1	13½	10½	3
Leigh Park A	4	1	1	8	16	3
Polytechnic B	4	0	0	4	20	0

The following match results are from the County Group of the local Middle Schools League:-

Waite End B 2, Waterlooville Library 3

(M.J. Street 0, C. Hallett 1; R. Dent 0, G. Rees 1; N. Barnes 1, D. Millard 0; L. Burton 0, S. Millard 1; K. Moore 1, P. Andrews 0.)

Waite End A 5, Farthingsgate 0

(T. Guit 1, K. Ashmore 0; N. Gardner 1, G. Morrison 0; L. Knight 1, S. Davis 0; V. Warren 1, S. Swindell 0; M.J. Street 1, P. Swindell 0.)

Horndean 4, Waite End B 1

(C.J. Pink 1, M.J. Street 0; K.D. McPhee 1, R. Dent 0; N.A. Millard 1, N. Barnes 0; B. Blick 1, K. Moore 0; N. Smart 0, L. Burton 1.)

Waite End A 1½, Horndean 3½

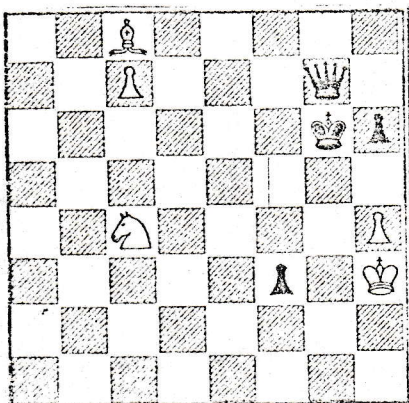
(S.C.R. Evans ½, C.J. Pink ½; T. Guit 0, K.D. McPhee 1; N. Gardner 1, N.A. Millard 0; L. Knight 0, N. Blick 1; V. Warren 0, M. Harris 1.)

Horndean 3½, Purbrook 1½

(C.J. Pink ½, G. Middleton ½; K.D. McPhee 1, G. Morris 0; N.A. Millard 1, B.G. Morris 0; N. Blick 1, D.C. Baxter 0; L. Johnson 0, T.D. Nicholson 1.)

The position this week is a composed end-game study by Rinck; white to play, draws.

1. B-B5 + K-R4 (1... K-B3; 2 N-K3 Q x P; 3. N-Q5 + wins the Queen);
2. N-K3! Q x P; 3. N-Q5 Q-Q3 (guarding KB3 and KB 5); 4. N-B4 +!
- Q x N; 5. B- N6 + K x B; 6. P-R5 + K any, and white is stalemated.



J.E.C.G.