

Chess Notes

St John's College Win Through To An Area Final

ST JOHN'S COLLEGE are through to the Area Final in a National Schools' Tournament.

The Adjudicator gave a win to P. Pemberton-James in his unfinished game against J. Tullock, so that the final score in the area semi-final (reported last week) was Bournemouth School 2, St John's College 4.

St John's have already gone further in this competition than any local school to date, and if they beat Hove Grammar School in the area final, they will earn themselves an inscribed Chess Clock, which is the reward given to each of the 16 teams entering the final.

As it is, with 358 teams taking part from all over the country, St John's have done remarkably well to be amongst the remaining 32.

It is very gratifying to witness the growing strength of Chess in local schools and no doubt the Education Authorities are taking note. Not only do the schools compete amongst themselves, but they can combine effectively when the occasion demands.

Last season's innovation of a match between representative teams drawn from Portsmouth and district on the one hand and Southampton Schools on the other now looks certain of becoming an annual event.

Starting on a modest dozen boards, this year the match will be on 20 and is due to be played at Tauntons School, Southampton on Saturday, March 4.

Anxious to emulate their seniors (who recently won the Inter-League match for the first time in seven years), P. M. Collins, Junior Match Captain of the Portsmouth and District League, has already started collecting names for what is hoped to be a team strong enough to beat anything that Southampton can produce.

PORTSMOUTH LEAGUE

The holiday has brought about a temporary lull in the local battle of the teams and there are only two results to report.

Senior Section — Division 2: St John's "A" 1½, Gosport "A" 3½. (P. Pemberton-James 1, J. H. Jones 0; D. Peniston-Bird ½, J. Hardcastle ½; C. Thomas 0, A. Dossett 1; K. Harriss 0, R. Clark 1; F. Aribarz 0, H. J. Taylor 1).

Schools' Section — Division 1
Section "A" — Portsmouth Grammar School "B" 4, Purbrook 1. (P. M. Collins 1, S. Rook 0; T. Moore 1, A. Leadbetter 0; P. Mihalop 0, R. Warren 1; D. Watkins 1, D. Thomas 0; I. Mansell 1, A. Hirst 0).

Full tables will be published next week.

The detailed scores in the School matches reported the week before last (players' names not then available) were:—

Gosport Grammar "B" 2, Technical High "A" 3. (Pringle 0, Hill 1; Webb 1, Gander 0; Stubbington 0, Arnold 1; Jones 1, Morrison 0; Lowe 0, Tringham 1).

Gosport Grammar "C" 2, Technical High "B" 3. (Webb 1, Robertson 0; Cocks 0, Davis 1; Harrington 0, Bugden 1; Stubbington 1, Brindle 0; Moore 0, Bowyer 1).

HANTS LEAGUE

It is unfortunate that Portsmouth were not at full strength when they met Bournemouth in their Hants League Match. As it was, they only lost by the narrowest of margins after W. Makar's game had gone for adjudication.

Scores: Portsmouth 2, Bournemouth 3. (Dr. A. J. Pointon 1, D. K. Bevis 0; Lieut. D. K. Butler ½, E. W. Chandler ½; W. Makar 0, S. B. Baker ½; W. A. Atkins 0, S. H. C. Lucas 1; D. M. Heywood 0, G. W. Kilminster 1).

TABLE

	P	W	D	G	P
Fareham	2	3	10½	3	
Bournemouth	4	2	0	10	3
Portsmouth	3	2	0	10	2
Young Pompeians	2	2	0	9½	2
Southampton	2	1	0	5	1
Cosham	4	1	0	7½	1
Woolston	2	0	0	3½	0
Salisbury	1	0	0	3	0
Andover	1	0	0	1	0

BOGNOR

This year's International Chess Congress will be held at Bognor from 5th to the 15th April. The usual 12 page illustrated brochure can be obtained from the Congress Director, Woodlands Court, Withdean Road, Brighton (6d in stamps to cover postage appreciated).

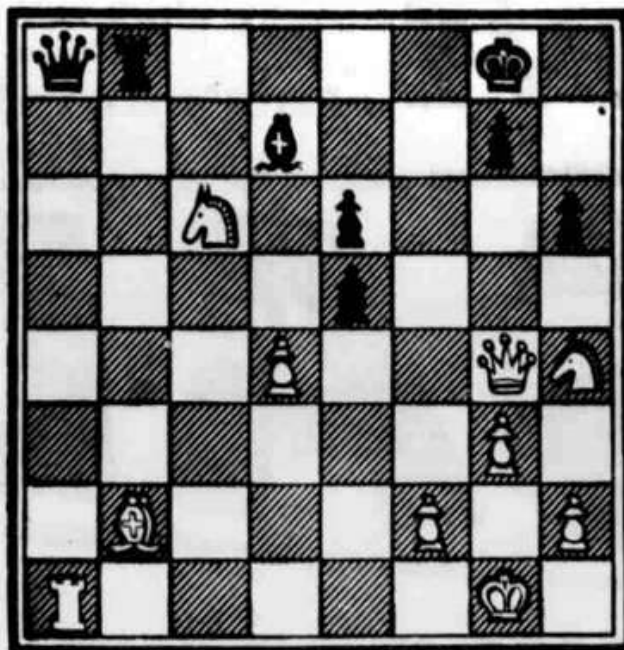
Three hundred and two competitors took part last year and it is confidently expected to improve on this figure in 1961.

PROBLEM

Instead of the usual problem, the diagram published this week is the position in the aforementioned game Tullock v. Pemberton-James as it went for Adjudication. In view of the importance of the decision to local chess, it was thought to be worth putting on record.

Do readers unanimously agree with the Adjudicator's findings?

P. PEMBERTON-JONES (ST JOHN'S)
BLACK (eight pieces)



J. TULLOCK (Bournemouth School)
WHITE (ten pieces) BLACK to MOVE

Chess Notes

FAREHAM STILL TOP OF TABLE

FAREHAM'S chances in the Hampshire League suffered a set-back when they lost against Salisbury. Nevertheless, they are still top of the table, as they retain a narrow lead over Bournemouth on game average.

The fact that Andover beat Woolston has already been reported, but the final score following the result of the Adjudication of board 4 is shown below.

SCORES.—

Fareham 1½, Salisbury 3½.
(T. de Buriatte 0, W. R. Bales 1; P. J. Cartmell 1, F. S. Scanes 0; A. S. Le Lond 0, E. Bowen 1; A. J. Evans ½, R. Tregear ½; A. F. Garner 0, A. J. Bentley 1).
Andover 3½, Woolston 1½.
(C. H. Henshaw 1, G. Daw 0; S. L. Russell 1, D. Drew 0; J. M. Jarvis 1, M. D. Thompson 0; Miss M. Elliott ½, H. G. Dell ½; I. Miles 0, R. Krause 1).
Southampton 3, Andover 2.
(Details not yet available).

TABLE

	P	W	D	G	P
Fareham	4	3	0	12	3
Bournemouth	4	3	0	10	3
Portsmouth	3	2	0	10	2
Young Pompeians	3	2	0	9½	2
Southampton	3	2	0	8	2
Andover	3	1	0	6½	1
Salisbury	3	1	0	6½	1
Cosham	4	1	0	7½	1
Woolston	3	0	0	5	0

The start of the fourth round in the County Individual Championship has been delayed because of a number of adjourned games, and the only third round results so far are, Smith 0, Thompson 1; Russell 0, Vine 1; Barton 0, Edmonds 1. The outstanding second round result was Valler 1, West 0.

In the Ladies' Championship there is one further result, Miss M. Elliott 1, Mrs. W. Pond 0.

There has been a re-arrangement of County fixture dates. The match Hants v. Bucks (50 boards), which was to have been played on January 21, has been postponed and will probably be played on March 18.

The 50-board match against Kent is still due to be played on February 18 but the 20-board match versus Oxfordshire will be brought forward from March 11 to March 4.

PORTSMOUTH LEAGUE

There has been a virtual standstill in this competition but there is one pre-holiday result now available following the adjudication of an unfinished game.

White	Black	White	Black
1. P-K4	P-QB4	10. P-KK4	Q-B2
2. K1-KB3	P-Q3	11. P-KR4	Kt x Kt
3. P-Q4	P x P	12. B x Kt	B-K3
4. Kt x P	Kt-KR3	13. P-R5	KR-B1
5. K-QB1	P-KK13	14. P x P	RP x P
6. P-KB1	B-K12	15. P-Kt5	Kt-R4
7. B-K3	O-O	16. B x B	K x B
8. O-O2	Kt-R3	17. O-O4ch	K-Kt1
9. O-O-O	P-QR3	18. P-Q4	B-K5

SENIOR SECTION (DIVISION 1)
Fareham "A" 1½, Portsmouth "A" 3½.
(P. J. Cartmell 0, Dr. A. J. Pointon 1; T. de Buriatte ½, M. Dymond ½; F. Johnson 0, M. March 1; A. S. La Lond 1, D. M. Heywood 0; G. Farmer 0, A. Bacon 1).

TABLES SENIOR SECTION

Division	P	W	D	G	P
Cosham "A"	4	4	0	15½	4
Portsmouth "A"	4	3	0	13½	3
R.N.P.L.	4	1	2	10	2
Fareham "A"	4	1	1	8½	1½
P'mouth Gram "A"	4	1	0	5½	1
Comm. Centre	4	0	1	7	½

Division 2

Division	P	W	D	G	P
Portsmouth "B"	4	4	0	15	4
Gosport "A"	3	3	0	11½	3
Fareham "B"	4	3	0	13½	3
Cosham "B"	4	1	0	6½	1
De Havilland "A"	4	1	0	5	1
St John's "A"	5	0	0	8½	0

Division 3

Division	P	W	D	G	P
St John's "B"	4	3	0	13	3
Fareham "C"	3	2	1	10½	2½
Gosport "B"	4	1	2	11½	2
Portsmouth "C"	4	1	2	9	2
De Havilland	4	1	1	7½	1½
Cyanamid "B"	4	0	0	3½	0

SCHOOLS SECTION

Division 1 (Section "A")

Division	P	W	D	G	P
Prices "A"	2	2	0	8	2
St John's "C"	1	1	0	5	1
Gosport Gram, "A"	1	1	0	3	1
P'mouth Gram, "B"	2	1	0	6	1
Purbrook "A"	2	0	0	3	0

Division 1 (Section "B")

Division	P	W	D	G	P
Tech. High "A"	5	3	1	14½	3½
St John's "D"	2	2	0	10	2
Portchester Mod.	2	1	1	5½	1½
Gosport Gram, "B"	2	1	0	5	1
Purbrook "B"	0	0	0	5	0

Division 2 (Under-15)

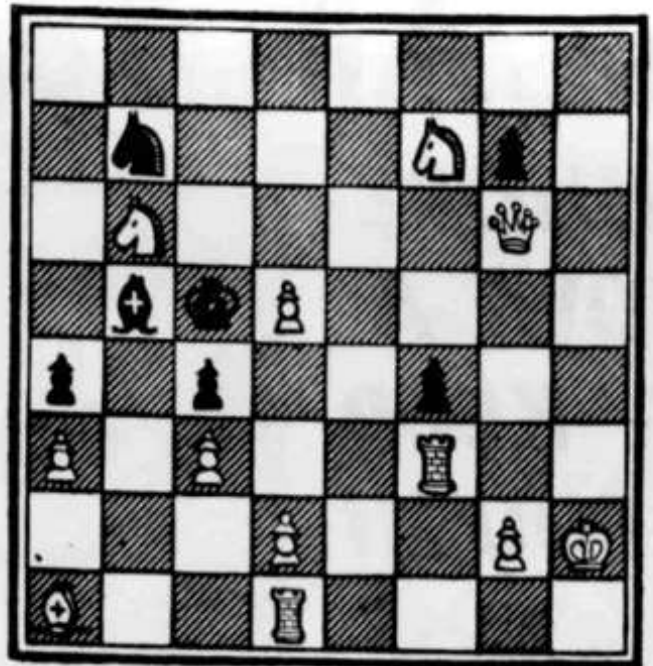
Division	P	W	D	G	P
St John's "F"	2	2	0	10	2
Tech. High "B"	2	2	0	7	2
St John's "E"	1	1	0	3½	1
Fareham Sec.	1	1	0	3	1
P'mouth Gram, "C"	2	1	0	4½	1
Purbrook "C"	1	1	0	6	1
Prices "B"	2	0	0	4	0
Gosport Gram "C"	0	0	0	2	0

PRIZE GAME

The winner of the Boyd prize for the best game in the County and District Correspondence Championship 1960 was Mr. F. B. Roberts (Herts). He was White in the following game against R. J. James (Wilts).—

White	Black	White	Black
19. R-K1	Q-B4	25. P-B5	B x Kt
20. Q-Q2	P-QK4	26. P x P	P x P
21. Kt-Q5	R-R2	27. P x B	O x P
22. B-Q3	B-K3	28. Q-K3	OR-B2
23. P-B5	B x Kt	29. BxKtP	Kt-K12
24. P x P	P x P	30. R-R3ch	RESIGNS

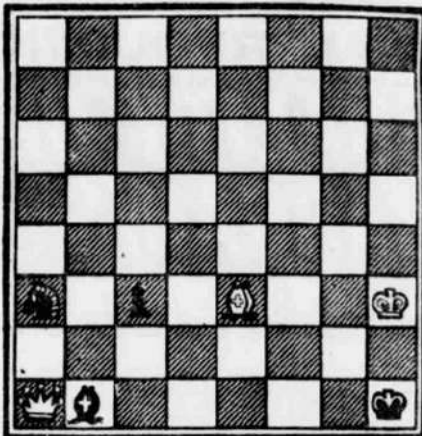
BLACK (Seven Pieces).



WHITE (12 Pieces).

Chess Notes

BLACK (FOUR PIECES)



WHITE (THREE PIECES)

White to move and mate in two.

WITH their top board still on holiday, another strong player at Hastings and yet another in bed with a cold, Cosham "A" were very much below strength when they met Fareham "A", and not unnaturally, were soundly beaten.

However, Cosham's first defeat of the season makes the championship issue more open and interesting.

RESULTS

Senior Section—Division 1.
Fareham "A" 3½, Cosham "A" 1½. (W. H. Pratten 1, T. Hollington 0; T. de Buriatte ½, S. C. Noke ½; P. J. Cartmell 1, R. P. L. Pett 0; A. S. La Lond 1, H. C. Smita 0; F. Johnson 0, A. D. Crossin 1).

TABLES

(Senior Section only)

Division 1					
	P	W	D	G	P
Cosham "A"	5	4	0	17	4
Portsmouth "A"	4	3	0	12½	3
Fareham "A"	5	2	1	12	2½
R.N.P.L.	4	1	2	10	2
Portsmouth Gram "A"	4	1	0	2½	1
Comm. Centre	4	0	1	7	½

Division 2					
	P	W	D	G	P
Portsmouth "B"	4	4	0	13	4
Gosport "A"	3	3	0	11½	3
Fareham "B"	4	3	0	12½	3
Cosham "B"	4	1	0	6½	1
De Havilland "A"	4	1	0	5	1
St John's "A"	5	0	0	8½	0

Division 3					
	P	W	D	G	P
St John's "B"	4	3	0	12	3
Fareham "C"	3	2	1	10½	2½
Gosport "B"	4	1	2	11½	2
Portsmouth "C"	4	1	1	5	2
De Havilland "B"	4	1	1	7½	1½
Cyanamid "B"	3	0	0	2½	0

Results so far received in the Portsmouth and District Individual Championship are: Jones 1, Brameld 0; Grant 0, Heywood 1; Smith (H.) 1, Moor 0, Lee 1, Davis 0 (def.); Hollington 1, Farmer 0; Price 0, Adams 1; March 1, Blossom 0; Collins ½, Watson ½.

HAMPSHIRE LEAGUE

Woolston have at last struck winning form and secured a convincing win against Salisbury.

The detailed scores of this match, together with those of the Southampton v. Andover match (not previously available) are given below—

Salisbury 1½, Woolston 3½. (W. R. Bale 0, M. Thompson 1; F. S. Scanes 1, G. Daw 0; W. W. Watson 0, R. S. Learmouth 1; P. K. Butler 0, D. Drew 1; J. D. Herring ½, H. G. Dell ½).
Southampton 2, Andover 2. (J. Valler 1, S. L. Russell 0, G. L. Frithard 0, M. C. Jarvis 1; P. L. Marshall 1, J. D. Bartley 0, A. C. Barton 1, G. D. Young 0; G. D. Harding 0, M. M. Carr 1).

TABLE

	P	W	D	G	P
Fareham	4	3	0	12	3
Bournemouth	4	3	0	10	3
Portsmouth	5	2	0	10	2
Young Pompeians	3	2	0	9½	2
Southampton	2	2	0	2	2
Andover	3	1	0	6½	1
Woolston	4	1	0	8½	1
Salisbury	4	1	0	5	1
Cosham	4	1	0	7½	1

In the County Individual Championship, further third round results are, Brameld 1, Wells 0; Henshaw 1, Valler 0; West 0, Harding 1; Bevis 0 (def.), Hollington 1.

GRADING LIST

Twelve Hampshire players are included in the Southern Counties Union Grading Lists for 1946, which have just been issued. Figures in brackets represent last year's gradings.

W. H. Pratten (Fareham) 2b (4a).
D. J. McCue (Farnborough) 4a —
M. E. Venham (Woolston) 4b (4b).
M. Thompson (Woolston) 5a (5a).
I. E. Vime (Eastleigh) 5a —
D. K. Bevis (Bournemouth) 5b —
E. W. Chandler (Bournemouth) 5b —
G. Daw (Woolton) 5b (5b).
A. C. Barton (Southampton) 6a (5b).
A. M. Edmunds (Woolton) 6a (5b).
C. H. Henshaw (Eastleigh) 6a —
R. S. Learmouth (Woolton) 6a —.

PROBLEM

The key move in the "Bristol" 3-mover published last week was 1. R-R1. Readers will then no doubt see that the moves 1. ... f4, 2. Q-N1, B-N4, 3. Q-N1 (mate) naturally follow.

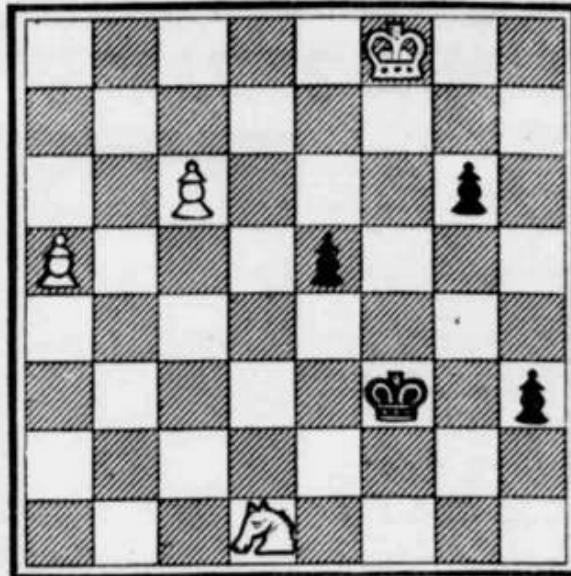
This week we have an interesting miniature, the second problem specially composed for the Evening News by Mr. W. E. Caine of Southsea.

Chess Notes

Portsmouth Club Likely Champions

BLACK (4 PIECES)

WHITE (4 PIECES)



White to play and win.

TWO local teams obtained convincing wins in the Hampshire League competition last week, and it now looks quite likely that some club in the Portsmouth area will be this season's champions.

If this happens, it must be for the first time for a good many years and will be yet another indication of the steadily mounting enthusiasm for the game in this part of the county.

The detailed scores are:
Southampton 1½, Fareham 3½.
(J. Valler 0, P. J. Cartmell 1; G. L. Pritchard 0, T. de Burriatte 1; P. L. Marshall ½, A. S. La Lond ½; H. L. Parsons ½, G. W. S. Goggin ½; A. C. Barton ½, R. Tyack ½).

Andover 0, Portsmouth 5. (C. H. Henshaw 0, Dr. A. J. Pointon 1; S. L. Russell 0, Dr. B. G. Wells 1; W. A. Howard 0, Lieut. D. K. Butler 1; G. D. Young 0, W. Makar 1; J. Haines 0, D. M. Heywood 1).

	P	W	D	G	P
Fareham	5	4	0	15½	4
Portsmouth	4	3	0	15	3
Bournemouth	4	3	0	10	3
Young Pompeians	3	2	0	8½	2
Southampton	4	2	0	9½	2
Woolston	4	1	0	8½	1
Salisbury	4	1	0	8	1
Cosham	4	1	0	7½	1
Andover	4	1	0	6½	1

PORTSMOUTH LEAGUE
Our local clubs have rejoined battle after the Christmas break and Cosham are now ahead of Portsmouth by the narrowest of possible margins in Division I of the Portsmouth and District League.

Division II shows Fareham 'B' improving their position slightly, while in Division III, Fareham 'C' move to the top.

SENIOR SECTION
Division I.—R.N.P.L. 2, Portsmouth 'A' 3. (A. F. Brameld 0, Dr. A. J. Pointon 1; W. J. Eaton ½, Dr. B. G. Wells ½; P. J. Colson 1, M. Dymond 0; H. W. Tripp 0, Lieut. D. K. Butler 1; E. Taylor ½, D. M. Heywood ½).

Division II.—Fareham 'B' 3½, Gosport 'A' 1½. (J. Grant 0; J. H. Jones 1; A. J. Evans 1, J. Hardcastle 0; E. G. Potter ½, A. D. Dosssett ½; G. D. Ratter 1, A. Wallis 0; A. F. Garner 1, H. J. Taylor 0).

Division III.—Cyanamid 'B' 1, Fareham 'C' 4. (R. Ruddle 0, D. A. Blossom 1; C. Mills 0, B. Keen 1; T. Thomas 0, R. Tyack 1; A. Yarrow 0, F. Gay 1; B. Hooper 1, Mrs. Gay 0).

Gosport 'B' 3, Cyanamid 'B' 2. (H. W. Tripp ½, B. Davies ½; R. Clark ½, N. H. J. Wood ½; D. J. Byng 1, A. Yarrow 0; P. B. Bennett ½, R. Rudgely ½; Mrs. L. Clear ½, C. Mills ½).

Division I					
	P	W	D	G	P
Cosham 'A'	5	4	0	17	4
Portsmouth 'A'	5	4	0	16½	4
Fareham 'A'	5	2	1	12	2½
R.N.P.L.	5	1	2	17	2
Ports. Gramm 'A'	4	1	0	5½	1
Comm. Centre	4	0	0	7	0½

Division II					
	P	W	D	G	P
Portsmouth 'B'	4	4	0	15	4
Fareham 'B'	5	4	0	17	4
Gosport 'A'	4	3	0	13	3
Cosham 'B'	4	1	0	6½	1
De Havilland 'A'	4	1	0	5	1
St John's 'A'	5	0	0	8½	0

Division III					
	P	W	D	G	P
Fareham 'C'	4	3	1	14½	3½
St John's 'B'	4	3	0	13	3
Gosport 'B'	5	2	2	14½	2
Portsmouth 'C'	4	1	2	9	2
De Havilland 'B'	4	1	1	7½	1½
Cyanamid 'B'	5	0	0	6½	0

In the Portsmouth and District Individual Tournament further fourth round results are Pointon 0 Richardson 1; and Paige 1 La Lond 0.

SCHOOL CHESS
It is understood that Cmdr. A. J. Peters, who is among the top six boards in Hampshire's County team, is now on the staff of Southern Grammar School. There is a thriving Chess Club in existence there and they already have one strong player in M. March.

Having an experienced and expert instructor at hand makes all the difference to a School Chess Group, and without doubt, we shall be hearing a lot more of Southern Grammar in the local chess world before long.

PROBLEM
The key move in last week's problem by Mr. W. E. Caine was K-N3.

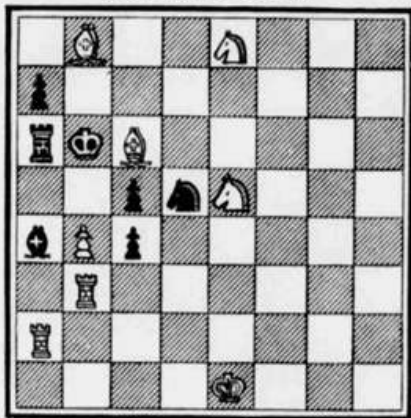
Here we have published a rather remarkable End-Game study composed some years ago by Mr. W. H. Frazer of Fareham. From the diagrammed position, the game proceeds quietly enough with:

1. P-B7, P-R7; 2. P-B8(Q), P-R8(O). Then the fireworks start—3. Q-N4+! KxQ (forced); 4. N-B7+; K-B5; 5. N x O; P-K5; 6. P-R6; P-E6; P-R7; P-K7.

The remaining moves in this interesting solution will be published next week.

Chess Notes

BLACK (SEVEN PIECES).



WHITE (EIGHT PIECES).
White to move, and mate in two.

— MUCH ACTIVITY — LITTLE CHANGE

THERE has been a fair measure of activity in the local League during the week, without any sensational changes in the relative positions of the teams.

St John's College continue to do well in the Schools' Section (their "F" team secured the third successive 5-0 win) and may well sweep the board this season.

In the Senior Section, R.N.P.L. move up into third position in Division 1, whilst Portsmouth Grammar School "A" drop to bottom place.

RESULTS

SENIOR SECTION

DIVISION 1
Portsmouth Grammar School "A" - 5; Community Centre "A" - 4; P. M. Collins - 3; B. S. Carter - 2; J. F. Watson - 1; A. Hayes - 1; A. Tulson - 0; S. F. Adams - 1; D. Watkins - 1; Default - 0; I. Mansell - 0; R. James - 1).
Portsmouth Grammar School "A" - 5; R.N.P.L. - 4; J. F. Watson - 4; A. J. Frammedil - 1; P. M. Collins - 1; W. J. Eason - 1; A. Russell - 0; P. J. Colson - 1; P. Mahlon - 0; E. Taylor - 1; I. Mansell - 0; H. W. Tripp - 1).
DIVISION 2
Fareham "C" - 3; De Havillands "B" - 2; B. A. Keen - 1; K. Lawrence - 0; D. A. Blossom - 1; S. Harris - 0; R. J. Tyack - 1; J. Simmons - 0; F. Gay - 0; D. Walker - 1; Mrs. Gay - 0; G. Matthews - 1).

SCHOOLS SECTION

DIVISION 1 (SECTION B)
St John's "D" - 5; Portchester Modern 2 (A. Clark - 1; C. Ward - 0; C. Moore - 1; A. Jones - 0; W. Miller - 0; D. Coates - 1; C. Dawes - 1; W. Waller - 0; B. Davis - 0; N. Tuning - 1).
Portchester Modern 1, St John's "D" - 4 (A. Jones - 0; A. Clark - 1; D. Coates - 0; C. Moore - 1; W. Waller - 0; P. Miller - 1; N. Tuning - 1; C. Dawes - 0; D. Magridge - 0; B. Davis - 1).
DIVISION 2
St John's "F" - 5; Fareham Sec. - 0; (C. Bichon - 1; C. Pines - 0; J. Hawkins - 1; R. Stanley - 0; L. Gallaway - 1; Bailey - 0; R. Slayter - 1; B. Goodchild - 0; S. Keeley - 1; G. Houghton - 0).
St John's "E" - 2; Prices "B" - 0; (A. Lakin - 1; M. Earry - 0; M. Rife - 1; I. Crawford - 0; C. Leake - 1; N. Davis - 0; J. Hawkins - 1; C. Jones - 0; C. Malone - 1; P. Przybycin - 0).

TABLES

SENIOR SECTION

Division 1					
	P	W	D	G	P
Cosham "A"	5	4	0	17	4
Portsmouth "A"	5	4	0	16 1/2	4
R.N.P.L.	5	2	2	16 1/2	2
Fareham "A"	5	2	1	12	2 1/2
Comm. Ctr.	5	1	1	10 1/2	1 1/2
Port. Gram.	5	1	0	7 1/2	1

Division 2					
	P	W	D	G	P
Portsmouth "B"	4	4	2	15	4
Fareham "B"	5	4	0	17	4
Gosport "A"	4	3	0	13	2
Cosham "B"	4	2	0	11 1/2	2
De Havillands "A"	1	1	0	5 1/2	1
St John's "A"	5	0	0	8 1/2	0

Division 3					
	P	W	D	G	P
Fareham "C"	5	4	1	17 1/2	4 1/2
St John's "C"	5	2	1	12	3 1/2
Gosport "B"	5	2	2	14 1/2	3
Portsmouth "C"	4	1	2	9	2
De Havillands "B"	5	1	2	9 1/2	1 1/2
Cyanamid "B"	5	0	0	6 1/2	0

SCHOOLS SECTION

Division 1 (Section A)					
	P	W	D	G	P
Prices "A"	5	2	0	8	2
St John's "A"	5	1	0	4	1
Gosp. Gram. "A"	5	1	0	4	1
Port. Gram. "B"	5	1	0	4	1
Portbrook "A"	5	0	0	3	0

Division 1 (Section B)					
	P	W	D	G	P
St John's "D"	4	4	0	17	4
Tech. High "A"	5	3	1	14 1/2	3 1/2
Portchester Mod.	4	1	1	8 1/2	1 1/2
Gosp. Gram. "B"	2	0	0	5	0
Portbrook "B"	2	0	0	5	0

Division 2					
	P	W	D	G	P
St John's "F"	5	3	0	15	3
St John's "E"	5	2	0	8 1/2	2
Tech. High "B"	5	2	0	7	2
Port. Gram. "C"	5	1	0	7 1/2	1 1/2
Portbrook "C"	5	1	0	6	1
Fareham Sec.	5	1	0	5 1/2	1
Prices "B"	5	0	0	4	0
Gosp. Gram. "C"	2	0	0	2	0

Pairings for the 11th round of the Portsmouth and District Individual Championship (with scores to date in brackets) are:-
Richardson (15) v. Collins (15);
Comber (2) v. Jones (2); Watson (2) v. Hollington (2); Adams (2) v. Wells (2); West (2) v. Evans (2); Heywood (2) v. Pointon (2); Farmer (2) v. Price (2); March (2) v. Paige (2); Crossin (1) v. Gram (1); Breameld (1) v. H. Smith (1); Moor (1) v. J. Smith (2); Blossom (1) v. Lee (1); Davis (0) v. La Lond (1).

NATIONAL SCHOOLS TOURNAMENT

The local triumph over the success of St John's College in entering the area final of the National Schools Tournament turned out to be premature.

Bournemouth School appealed against the adjudicator's decision in the unfinished game (diagram published on 4th January), and their appeal was upheld. St John's accordingly lost the match and are out of the competition.

BATTLE OF BRITAIN TOURNAMENT

Entries are invited for the 1961 Battle of Britain Chess Tournament held in aid of the R.A.F. Benevolent Fund. Prizes up to £10 will be awarded and although any player resident in Great Britain is eligible, matches have to be played in the Greater London area.

Closing date for entries 4th February. Send to Mr. J. Kennedy, 70 Meadway, Bromley, Kent.

PROBLEM

The final moves in the End-Game Study by Mr. Pratten last week were:
8. N - B2 K - K6; 9. N - N4 - K - B5; 10. N - K5 K - K6;

11. N - B3 K - N; 12. P - R(0) - and White wins easily.

This week we have another original composition by P. M. Collins of Portsmouth Grammar School - key move to solution next week.

LATE NEWS

Young Pompeians draw their Hants League match against Southampton. Additional Portsmouth League results: Fareham "B" 1 1/2; Portsmouth "B" 3 1/2; De Havillands "A" 0; Gosport "A" 3; De Havillands "A" 1; Cosham "B" 2.

Chess Notes

VALUABLE HALF POINT

OUR local Junior team, the Young Pompeians, gave a strong Southampton team a very good run for its money last week, and returned with another valuable half-point.

Cosham have played Bournemouth in this competition and are still awaiting the result of three adjudications. Even the Bournemouth team seem convinced that they have lost this match, however, so it seems very probable that another local victory is in the offing.

Salisbury seem to be finding their form and their latest win against a strong Andover team was quite a good effort.

RESULTS

Southampton 2½, Young Pompeians 2½, (J. Valler 0, M. J. Dymond 1; H. L. Parsons 1, P. M. Collins 0, G. L. Pritchard 0, A. F. Brameld 1; A. C. Barton 1, J. M. Jones 0; J. D. Demochowski ½, M. March ½).
 Andover ½, Salisbury 4½, (C. H. Henshaw 0, P. J. Allen 1; S. L. Russell 0, P. S. Scanes 1; J. Jarvis 0, W. R. Bale 1; Miss M. Elliott 0, J. D. Herring 1; M. Carr ½, P. K. Barker ½).

TABLE

	P	W	D	G	Pt
Fareham	5	4	0	15½	4
Portsmouth	4	3	0	15	3
Bournemouth	4	3	0	10	3
Young Pompeians	4	2	1	12	2½
Southampton	4	2	0	12½	2½
Salisbury	4	1	0	8½	1
Woolston	4	1	0	8	1
Cosham	4	1	0	7½	1
Andover	5	1	0	7	1

Scores so far received in the 4th round of the County Individual Championship are: Edmonds 1, Brameld 0; Russell 1, Smith 0; Harding ½, Hocking ½; Barton 0, Valler 1; Wells ½, Hollington ½.

PORTSMOUTH LEAGUE

Gosport "B" improve their position in Division 2 of the Senior Section of the Portsmouth League, and Portsmouth "B" are consolidating their position at the top of the Table.

In the Schools Section, Prices School and St John's College are now neck-and-neck in Section "A" of Division 1, whilst Portchester Modern secured a narrow win against Parbrook Park in Section "B."

RESULTS

Senior Section — Division 2
 De Havilland "A" 0, Gosport "A" 3, (S. Shepherd 0, J. H. Jones 1, R. Ralls 0, A. N. Dossett 1; B. Smith 0, R. Clarke 1; L. Langley 0, J. Hardcastle 1; R. Moody 0, H. J. Taylor 1).
 Fareham "B" ½, Portsmouth "B" 2½, (J. Grant 0, W. Makar 1; A. J. Evans 0, J. P. Price 1; E. G. Potter ½, M. March ½, C. Brading ½, A. Bacon ½; G. D. Rafter ½, J. E. Smith ½).
 De Havilland "A" 2, Cosham "B" 3, (B. Smith 0, R. L. Paige 1; L. Langley 0, H. C. Smith 1; R. Moody 0, M. Leggett 1; R. Ralls 1, R. P. L. Pett 0; S. Shepherd 1, S. A. Lamb 0).
Gosport "A" 1½, Portsmouth "B" 2½, (J. H. Jones ½, W. Makar ½; A. N. Dossett ½, M. March ½, R. Clark 0, G. Feltham 1; H. J. Taylor 0, J. P. Price 1; J. Hardcastle ½, A. Bacon ½).

SCHOOLS SECTION

Division 3
 St John's "B" 3, Portsmouth "C" 2, (A. Clark 1, J. E. Smith 0; C. Moore 1, Default 0; P. Miller 0, C. J. Campion 1; C. Dawes 0, E. Woods 1; A. Lakin 1, E. J. Canny 0).
Division 1 (Section A)
 Portsmouth Grammar "B" 2, St John's "C" 3, (P. M. Collins 1, P.

Pemberton-James 0, P. Mahaling 0, D. Peniston-Bird 1; T. Moore 1, C. Thomas 0; D. Watkins 0, K. Harrison 1; I. Mansell 0, A. Clark 1).

Division 1 (Section B)

Parbrook "B" 2, Portchester Modern 3, (A. Renoud 0, D. Coates 1; N. Walker 0, W. Wallen 1; T. Wilson 1, N. Tining 0; Heather Norwood 1, A. Jones 0, G. Marsh 0, D. Mugridge 1).

TABLES

Senior Section					
Division 1					
	P	W	D	G	Pt
Cosham "A"	5	4	0	17	4
Portsmouth "A"	5	4	0	16½	4
R.N.P.L.	6	2	1	16½	3
Fareham "A"	5	2	1	12	2½
Comm. Centre	5	1	1	12	1½
P'mouth Gram. "A"	6	1	0	10	1½

Division 2					
	P	W	D	G	Pt
Portsmouth "B"	6	4	0	22	6
Gosport "A"	6	4	0	19½	4
Fareham "B"	6	4	0	18½	4
Cosham "B"	5	2	0	10	2
De Havilland "A"	6	1	0	7	1
St John's "A"	5	0	0	8½	0

Division 3					
	P	W	D	G	Pt
Fareham "C"	5	4	1	17½	4½
St John's "B"	5	4	0	16	4
Gosport "B"	5	2	2	14½	3
Portsmouth "C"	5	2	1	11	2
De Havilland "B"	5	1	1	9½	1½
Cyanamid "B"	5	0	0	6½	0

SCHOOLS SECTION

Division 1 (Section A)					
	P	W	D	G	Pt
Prices "A"	2	2	0	5	2
St John's "C"	2	2	0	5	2
Gosport Gram. "A"	2	1	0	3	1
P'mouth Gram. "B"	2	1	0	3	1
Parbrook "A"	4	0	0	3	0

Division 1 (Section B)

	P	W	D	G	Pt
St John's "D"	4	4	0	12	4
Tech. High "A"	4	2	1	14½	3½
Portchester Mod.	5	2	1	11½	2½
Gosport Gram. "B"	2	1	0	3	1
Parbrook "B"	5	0	0	4	0

Division 2

	P	W	D	G	Pt
St John's "E"	3	3	0	15	3
St John's "F"	3	2	0	10	2
Tech. High "B"	3	2	0	7	2
P'mouth Gram. "C"	3	1	0	4½	1
Parbrook "C"	3	1	0	6	1
Fareham Sec.	3	0	0	4	0
Prices "B"	3	0	0	2	0
Gosport Gram. "C"	3	0	0	2	0

In the Portsmouth and District Individual Tournament further results are: Round 4. — Wells 1, West 0; Smith (J.) 1, Crossin 0. Round 5. — Richardson 0, Collins 1; March ½, Paige ½. This puts P. M. Collins (Portsmouth Grammar School) back into the clear lead by at least ½ a point.

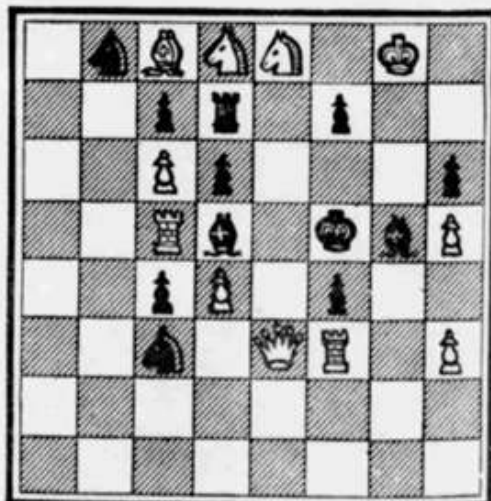
LATE NEWS

Hans League. — Cosham 2½, Bournemouth 1½. (Cosham won on boards 2 and 5.)
 Portsmouth League. — Portsmouth "B" 4, De Havilland "A" 1.

PROBLEM

The key move in last week's problem by P. M. Collins was P-N5.
 This week we have yet another problem specially composed by Mr. C. F. Way of Cosham Chess Club.

BLACK (12 PIECES).



WHITE (11 PIECES).

White to play, and mate in two.

Portsmouth



Out For The Double

PORTSMOUTH are now top of the Hampshire League Table following their win against Southampton. Their position is even stronger than at first sight, as Fareham have lost their recent match against Woolston.

Portsmouth Chess Club now have the "double" within their reach — Champions of both Hampshire and of Portsmouth and District — and no doubt they will spare no effort to make this remarkable achievement a fact.

SCORES

Portsmouth 3½, Southampton 1½.
(Dr. A. J. Poinon 1, J. Valier 0;
Dr. B. G. Wells 1, H. L. Parsons 0;
Lieut. D. K. Butler 0, G. L. Pritchard 1;
W. Makar ½, A. C. Barton ½;
D. M. Heywood 1, Default 0)

TABLE

	P	W	D	G	P
Portsmouth	5	4	0	15½	4
Fareham	5	4	0	15½	4
Bournemouth	5	3	0	11½	3
Young Pompeians	4	2	1	12	2½
Southampton	6	2	1	13½	2½
Salisbury	5	2	0	12½	2
Cosham	5	2	0	11	1
Woolston	4	1	0	8½	2
Andover	5	1	0	7	1

PORTSMOUTH LEAGUE

There has been very little activity in the Portsmouth and District League during the past week, and the only mentionable feature was De Havilland's rather encouraging win in Division 3 of the Senior Section.

Senior Section — Division 2. — Gosport "A" 4½, Cosham "B" ½. (J. H. Jones ½, R. L. Paige ½; A. N. Dosssett 1, H. C. Smith 0; J. Hardcastle 1, M. Leggett 0; H. J. Taylor 1, S. Lamb 0; R. Clark 1, J. Hodgkinson 0).

Division 3. — Gosport "B" 1, De Havilland "B" 4. (Cox 0, K. Lawrence 1; D. J. Byng 1, D. Walker 0; P. Bennett 0, S. Harris 1; A. Ferrier 0, J. Simmons 1; Bone 0, G. Matthews 1).

Tables (Senior Section only).

	P	W	D	G	P
Portsmouth "A"	6	5	0	20½	5
Cosham "A"	6	4	0	18	4
Fareham "A"	6	3	1	17	3½
R.N.P.L.	6	2	2	16½	3
Comm. Centre	6	1	1	10½	1½
P'mouth Gramm "A"	6	1	0	7½	1

Division 2

	P	W	D	G	P
Portsmouth "B"	7	7	0	26	7
Gosport "A"	7	5	0	24	5
Fareham "B"	7	4	0	20½	4
Cosham "B"	6	2	0	10	2
St John's "A"	6	1	0	11½	1
De Havilland "A"	7	1	0	5	1

Division 3

	P	W	D	G	P
Fareham "C"	5	4	1	17½	4½
St John's "B"	5	4	0	16	4
Gosport "B"	6	2	2	15½	3
Portsmouth "C"	6	2	2	14½	3
De Havilland "B"	6	2	1	13½	2½
Cyanamid "B"	6	0	0	3	0

In the Individual Tournament, pairings for the sixth round (with scores to date in brackets) are:—

Collins (4½) v. Wells (4), Jones (4) v. Hollington (4), West (3) v. Richardson (3½), Poinon (3½) v. Comben (3), Evans (2½) v. Watson (3), Smith (J.) (3) v. Adams (2½), Farmer (2½) v. March (2½), Price (2½) v. Brameld (2½), Le Lond (1) v. Crossin (1½), Davis (0) v. Moir (1), Lee (1) v. Smith (H.) (1½), Grant (2) v.

Paige (2½), Heywood (2) v. Bloxson (2).

POSTAL CHESS

The British Correspondence Chess Association yearbook just issued lists the results of 1960 competitions, and the following local names appear:—

Dr. B. G. Wells (Portsmouth). — (a) Equal second place in Trophies Tourney Division 1 (Section A). (b) 19th place in Handicap Tourney (Class 2).

L. West (Community Centre). — (a) Third place in Trophies Tourney Division 1 (Section A). (b) 49th place in Handicap Tourney (Class 2).

J. E. C. Grant (Fareham). — 33rd place in Handicap Tourney (Class 4). R. L. Paige (Cosham). — (a) Equal 3rd place in Trophies Tourney Division 4 (Section B). (b) 22nd place in Handicap Tourney (Class 4).

A. F. Garner (Fareham). — (a) 9th place in Trophies Tourney Division 1 (Section B). (b) 48th place in Handicap Tourney (Class 3).

Cmdr. A. J. Peters. — (a) Equal 2nd place in Trophies Tourney Major (Section C). (b) 36th place in Handicap Tourney (Class 1).

Results are beginning to come in for the 1961 County and District Correspondence Championship. Hampshire players who have finished their games are:—

Hants I. — Bd. 1 P. A. Ursell (Bournemouth) 0, v. C. H. O'D Alexander (Glos.) 1. Bd. 9 A. S. La Lond (Fareham) ½, v. M. W. Wills (Cams.) ½.

Hants II. — Bd. 4 A. R. Cooper (Southsea) 0, v. D. H. Butler (Berks.) 1.

NEW WORKS CLUB

The Chess Section of the Vosper Sports and Social Club has been reformed and it seems very probable that they will be entering at least one team in the Portsmouth and District League next season. At the moment, a Tournament between 11 players is starting with the object of assessing the potential playing strength of a number of newcomers.

NATIONAL CHESS WEEK

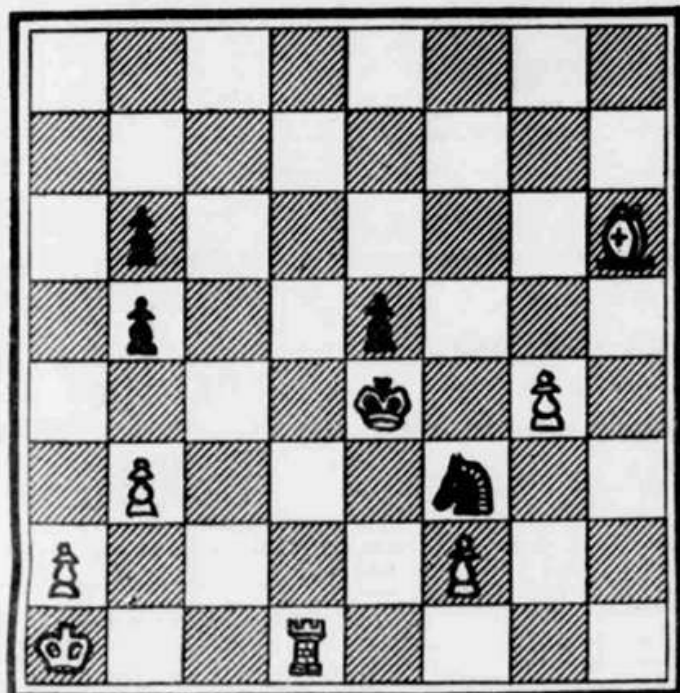
The week set aside by the British Chess Federation for National Chess Week this year is March 12—18.

The idea is for all Chess organizations to stage some special event during that week, which is likely to bring the game to the notice of the general public. All local clubs are being asked to co-operate and one way that they can do this is to organize a 'Teenagers v. Old Stagers' match so that the result can be incorporated into the mammoth country-wide match that has now become a tradition.

PROBLEM

A few weeks ago, we published the famous "Bristol" three-mover.

This week we give the equally well known "Indian." First published around 1845, it is generally thought to be the composition of an English Chaplain living in India — hence the name.



White to move and mate in four.

Chess Notes

HAMPSHIRE TRIFLE DISAPPOINTING

IN view of the fact that Hampshire had previously beaten Sussex, and Sussex had in turn beaten Kent, Hampshire's performance last week against Kent was a trifle disappointing.

The scores stand 8—11 in the S.C.C.U. first 20" match and 19½—25½ in the Amboyna Shield contest. Hampshire is, therefore, bound to lose both.

What must be a record number of local players took part (15) and they "broke even" with 5 wins, 4 draws, 5 losses and 1 for adjudication, as follows—

Bd. 10 Dr. A. J. Pointon (Portsmouth)	lost to C. Champion
Bd. 19 A. F. Brameld (Gosport)	beat W. Gillespy
Bd. 20 T. de Buriatte (Fareham)	drew with T. Llewellyn-Jones
Bd. 23 P. M. Collins (Ports. Gram.)	beat P. Hammer-ton
Bd. 25 W. Makar (Portsmouth)	drew with A. Johnson
Bd. 28 A. S. La Lond (Fareham)	drew with L. Lunberg
Bd. 29 Lt. D. K. Butler (Fareham)	lost to M. J. Reddie
Bd. 31 T. E. Hollington (Cocham)	lost to M. Lam-shire
Bd. 32 J. E. C. Grant (Fareham)	beat S. Paul
Bd. 33 J. P. Price (Portsmouth)	drew with A. A. Maris
Bd. 34 D. M. Heywood (Portsmouth)	beat F. Comber
Bd. 37 D. J. Blackman (Gosport)	lost to R. Raymond
Bd. 42 A. F. Garner (Fareham)	beat J. D. Davis
Bd. 43 J. H. Jones (Gosport)	game unfinished
Bd. 45 J. F. Watson (Ports. Gram.)	lost to D. Henderson

Portsmouth League.—Portsmouth 'A' have further improved their position in the First Division of the Senior Section in the Portsmouth League, and although the present champions, Fareham, are now climbing up the table, they have some way to go before they overhaul their rivals.

In the School's Section, St John's College have now established a very firm grip on all three divisions.

RESULTS

Senior Section—Division I
 Portsmouth "A" 4, Portsmouth Grammar "A" 1, (Dr. A. J. Pointon ½, P. M. Collins ½; Dr. R. G. Wells 1, D. Watkins 0; Lt. B. K. Butler 1, Default 0; D. M. Heywood ½, 1, Mansell ½; J. P. Price 1, C. Goble 0), R.N.P.L. 2, Fareham "A" 3, (W. J. Eaton 1, Default 0; A. F. Brameld 0, T. de Buriatte 1; P. J. Collins 0, A. S. La Lond 1; E. Taylor 1, G. W. S. Goggin 0; D. J. Blackman 0, F. Johnson 1).

SCHOOLS SECTION

Division I (Section A)
 St John's "C" 4, Purbrook "A" 1, (P. Pemberton-James 1, S. Rook 0; D. Peniston-Bird 0, A. Leadbetter 1; C. Thomas 1, R. Warren 0; K. Harrison 1, D. Thomas 0; F. Aribarr 1, A. Renouf 0).

Division I (Section B)
 St John's "D" 5, Purbrook "B" 0, (A. Clark 1, N. Walker 0; C. Moore 1, G. Marsh 0; P. Miller 1, D. Nicholson 0; C. Dawes 1, J. Wilson 0; B. Shaw-Brown 1, Heather Norwood 0).

Division II
 St John's "E" 5, Purbrook "C" 0, (B. Lakon 1, D. Nicholson 0; C. Leake 1, R. Francis 0; B. O'Brien 1, M. Grant 0; W. Galloway 1, R. Lintott 0; B. Taylor 1, Voss 0).

TABLES SENIOR SECTION

Division I					
	P	W	D	G	P
Portsmouth "A"	7	6	0	24½	6
Fareham "A"	7	4	1	20	4½
Cocham "A"	6	4	0	18	4
R.N.P.L.	6	2	2	18½	3
Comm. Ctr.	6	2	1	16	2½
Ports. Gram. "A"	7	1	0	8½	1

Division II					
	P	W	D	G	P
Portsmouth "B"	7	7	0	26	7
Gosport "A"	7	5	0	24	5
Fareham "B"	7	4	0	20½	4
Cocham "B"	6	2	1	18	2½
St John's "A"	6	1	0	11½	1
De Havillands "A"	7	1	0	8	1

Division III					
	P	W	D	G	P
Fareham "C"	5	4	1	17½	4½
St John's "B"	5	4	0	18	3
Gosport "B"	6	2	2	15½	3
Portsmouth "C"	6	2	2	14½	3
De Havillands "B"	6	2	1	13½	2½
Cynamid "B"	6	0	0	8	0

SCHOOLS SECTION

Division I (Section A)					
	P	W	D	G	P
St John's "C"	4	3	1	14½	3½
Prices "A"	3	2	1	10½	2½
Gos. Gram. "A"	3	1	0	8	1
Ports. Gram. "B"	3	1	0	8	1
Purbrook "A"	4	0	0	4	0

Division I (Section B)					
	P	W	D	G	P
St John's "D"	5	3	1	14½	3½
Tech. High "A"	5	3	1	14½	3½
Portchester Mod.	5	3	1	11½	2½
Gos. Gram. "B"	2	1	0	5	1
Purbrook "B"	3	0	0	7	0

Division II					
	P	W	D	G	P
St John's "E"	5	3	0	15	3
St John's "B"	5	3	0	12½	3
Tech. High "B"	5	2	0	7	2
Ports. Gram. "C"	4	1	0	4½	1
Purbrook "C"	4	1	0	6	1
Fareham Sec.	2	1	0	3	1
Prices "B"	3	0	0	4	0
Gosport Gram. "C"	3	0	0	2	0

HAMPSHIRE LEAGUE

The Conductor of the Hampshire League has decided to make the recent match between Fareham and Woolston a 4-board affair, as he objected to the top board game being played separately by mutual arrangement.

The scores were as follows:—
 Fareham ½, Woolston 3½ (P. J. Cartmill 0, A. M. Edmonds 1; T. de Buriatte 0, G. Dawl; A. S. La Lond 0, C. Newby 1; R. Tyack ½, M. D. Thompson ½).

TABLE

	P	W	D	G	P
Portsmouth	5	4	0	18½	4
Fareham	5	4	0	18	4
Bournemouth	5	3	0	11½	3
Young Pompeians	4	2	1	12	2½
Southampton	6	2	1	13½	2½
Salisbury	5	2	0	12½	2
Woolston	5	2	0	12	2
Cocham	5	2	0	11	2
Andover	5	1	0	7	1

PROBLEM

The solution to last week's "Indian" problem was I. B-N5, P-N5, 2. B-Q1, P-N4; 3. R-Q2, K-B5; 4. R-Q4 (ch. check and mate).

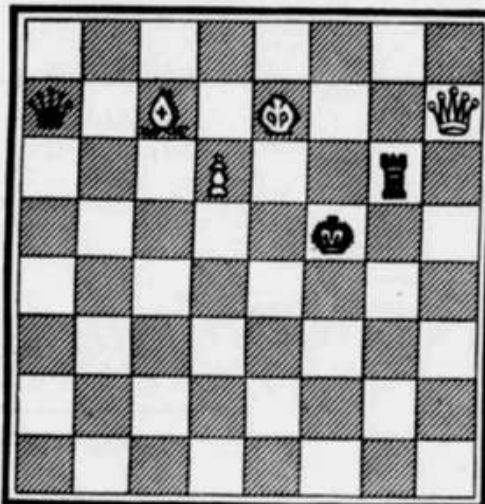
There are several others solutions. This week we have a position sent in by Mr. C. Hotwell of North End, Portsmouth, which arose in a game he was playing with his 15-year-old son.

The question is, can Black (who has the move) save the game? On the face of it, White has a win, but there does seem to be a number of resources left to Black in defence.

LATE NEWS

Portsmouth League results.—Division I: Commonly Centre 1, Cocham "A" 4, Division II: De Havillands "A" ½, St John's "A" 4½.

Black (three pieces).



White (four pieces).

COSHAM STILL IN FIGHT FOR TITLE

COSHAM beat Community Centre in their recent match and obviously have no intention of letting Portsmouth run away with the championship title.

The remaining fixtures for these two clubs are (a) Cosham v. R.N.P.L., Portsmouth Grammar School and Fareham and (b) Portsmouth v. Community Centre, Fareham and R.N.P.L. The interesting feature therefore is that Fareham are able to spoil the chances of either and at the same time improve their own.

In Division II the position of Portsmouth "B" is now almost unassailable.

The Schools section shows St John's "F" recording their fourth consecutive 5-0 win.

RESULTS

SENIOR SECTION

Division I

Community Centre 1, Cosham "B" 4 (R. Carter ½, G. Richardson ½, A. Hayes ½, R. L. Paige ½, S. F. Adams ½, C. F. Way 1; Default 0, S. C. Noko 1; M. James 0, T. Hollington 1).

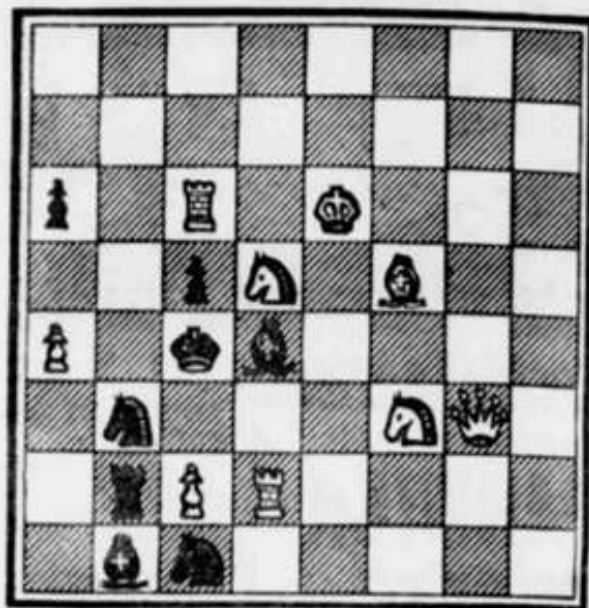
Division II

De Havillands "A" ½, St John's "A" 4½ (B. Smith 0, P. Pemberton-James 1, L. Langley ½, C. Thomas ½, R. Moody 0, K. Harrison 1; R. Halls 0, A. Clark 1; S. Shepherd 0, C. Moore 1).

Cosham "B" 1, Portsmouth "B" 4 (H. C. Smith 0, W. Makar 1; M. Leggett ½, M. Marsh ½; R. P. L. Pett 0, J. P. Price 1; S. A. Lamb 0, A. Baron 1; J. R. Hodgkinson ½, J. E. Smith ½).



BLACK (EIGHT PIECES)



WHITE (NINE PIECES)

White to move and mate in two.

SCHOOLS SECTION

Division II

Prices "B" 6, St John's "F" 5 (M. Larray 0, R. O'Brien 1; L. Crawford 0, C. Bichon 1; N. Davies 0, S. Kevley 1; D. Weston 0, R. Stewart 1; C. Jones 0, K. Taylor 1).

TABLES

SENIOR SECTION

Division I

	P	W	D	G	P
Portsmouth "A"	7	0	0	24½	4
Cosham "A"	5	0	22	5	5
Fareham "A"	4	1	20	4½	5
R.N.P.L.	2	2	18½	3	3
Comm. Ctr.	1	1	11½	1½	1
Port. Gram. "A"	1	0	8½	1	1

Division II

	P	W	D	G	P
Portsmouth "B"	8	0	0	26	5
Gosport "A"	5	0	24	3	3
Fareham "B"	4	4	20½	4	4
Cosham "B"	3	2	18	3	3
St John's "A"	2	2	16	2	2
De Havillands "A"	0	0	0	0½	1

Division III

	P	W	D	G	P
Fareham "C"	4	1	17½	4½	4
St John's "B"	4	0	16	4	4
Gosport "B"	4	0	15½	3	3
Portsmouth "C"	4	0	14½	3	3
De Havillands "B"	0	1	13½	2½	2
Cyanamid "B"	0	0	5	0	0

SCHOOLS SECTION

Division I (Section A)

	P	W	D	G	P
St John's "C"	4	2	14½	3½	3
Prices "A"	3	2	10½	2½	2
Gosp. Gram. "A"	1	1	0	2	1
Port. Gram. "B"	1	1	0	1	1
Purbrook "A"	0	0	0	0	0

Division I (Section B)

	P	W	D	G	P
St John's "D"	5	0	22	3	3
Tech. High "A"	3	2	14½	2½	2
Portchester Mod.	2	1	11½	2	2
Gosp. Gram. "B"	0	0	5	1	1
Purbrook "B"	0	0	7	0	0

Division II

	P	W	D	G	P
St John's "E"	4	4	20	4	4
St John's "F"	3	3	0	13½	3
Tech. High "B"	2	2	0	7	2
Port. Gram. "C"	2	1	0	4½	1
Purbrook "C"	1	1	0	6	1
Fareham Sec.	1	0	3	1	1
Prices "B"	1	0	4	0	0
Gosp. Gram. "C"	0	0	2	0	0

HAMPSHIRE LEAGUE

Fareham's win against Bournemouth puts them back in the running for the Hampshire League Championship, but Portsmouth are probably more favourably placed. It now begins to look if much will depend on the match Fareham v. Portsmouth, which still remains to be played.

RESULTS

Fareham 2½, Bournemouth 1½ (P. J. Cartmel ½, D. K. Bevis ½; T. de Buriatte ½, E. W. Chandler ½; A. S. La Lond 1, S. H. Lucas 0; G. W. S. Goggin ½, A. Pike ½; R. Tyack 1, C. B. Orton 0).

TABLE

	P	W	D	G	P
Fareham	7	0	19½	5	5
Portsmouth	5	4	0	18½	4
Bournemouth	6	2	0	12	3
Young Pompeians	4	2	1	12	2½
Southampton	6	2	1	13½	2½
Salisbury	5	2	0	12½	2
Woolston	4	2	0	12	2
Cosham	5	2	0	11	2
Andover	5	1	0	7	1

COUNTY NEWS

As a result of the five adjudications in the recent match Hants v. Kent, the final scores were 8-12 in the S.C.C.U. Championship and 21-29 in the Ambryna Shield Contest.

J. H. Jones (Gosport) was awarded a draw on board 43 against G. Homan.

PROBLEM

P. M. Collins of Portsmouth Grammar School has sent in another of his original compositions, and this is published this week.

LATE NEWS

Hants League

Salisbury 1½, Southampton 3½.

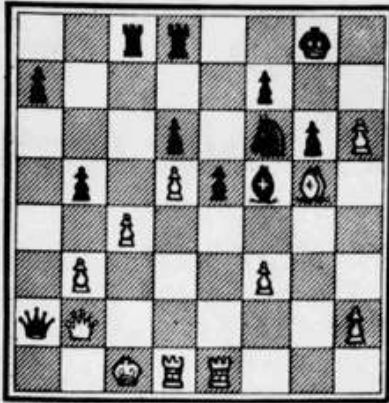
Andover 0, Cosham 4. (One game for adjudication)

Portsmouth League

Fareham "C" 2½, Portsmouth "C" 2½.

Chess Notes

BLACK (12 PIECES)



WHITE (11 PIECES).

Black to play and mate in five moves.

SCHOOLS TEAM LOSE TO SOUTHAMPTON

THE representative team, drawn from our local Schools, lost heavily by 10½ games to 19½ to Southampton in the Junior Inter-League match played at Taunton's School, Southampton. The Portsmouth team was at almost full strength, so this year they have to admit to being beaten by a better team.

Full scores were (Portsmouth League games first)—Ed. 1 P. M. Collier (P.G.S.) 5, M. Foot, Ed. 2 A. F. Brazier (G.G.S.) 1, R. Rowland 0, Ed. 3 Default 1, Default 1, Ed. 4 M. Marsh (S.G.S.) 5, D. Saunders 1; Ed. 5 P. Penberton-James (S.J.) 8, G. Jones (G.G.S.) 1, C. Collins 1, Ed. 6 J. B. Tyack (P.S.) 1, M. Jupp 0, Ed. 7 B. A. Keen (P.S.) 5, D. Kahn 5; Ed. 8 C. Thomas (S.J.) 8, J. Patten 1; Ed. 9 N. Harrison (S.J.) 5, M. Baehche 1; Ed. 10 A. Clark (S.J.) 1, R. Cooke 0; Ed. 11 A. Leadbetter (P.P.) 8, H. Brown 1; Ed. 12 J. Hill (T.H.) 8, P. Hore 1; Ed. 14 P. Miller (S.J.) 8, D. Hewitt 1; Ed. 15 R. Warren (P.P.) 1, R. Baker 0, Ed. 16 R. Hodgkinson (G.G.S.) 1, Default 0; Ed. 17 R. J. Woods (S.G.S.) 8, C. Magley 1; Ed. 18 R. Gander (T.H.) 8, F. Jenkins 1; Ed. 19 C. Dawes (S.J.) 1, J. Collins 0; Ed. 20 B. Davis (S.J.) 1, J. Dunford 1; Ed. 21 L. Lakin (S.J.) 1, R. Meaghan 0; Ed. 22 D. Thomas (P.P.) 8, A. Clark 1; Ed. 23 C. Arnold (T.H.) 8, B. Williams 1; Ed. 24 K. Firth (P.P.) 8, T. Pickford 1; Ed. 25 M. Pelling (T.H.) 8, M. Pittaway 1; Ed. 26 Heather Norwood (P.P.) 8, R. Bingham 1; Ed. 27 C. Leake (S.J.) 1, Diana Fry (S.J.) 1, C. Goble (P.G.S.) 8, Carol Cooper 1; Ed. 29 D. Nicholson (P.P.) 1, Celia Ford 0; Ed. 30 R. Bower (T.H.) 8, L. Lett (S.J.) 1; St John's College, P.P. Park; Technical High; P.S.—Price's School; G.G.S.—Portsmouth Grammar; S.G.S.—Southern Grammar; N.G.S.—Northern Grammar; G.G.S. Gosport Grammar.

Portsmouth League
In the Third Division of the Senior Section of the Portsmouth League, the "Johns" "B" have narrowed the margin between themselves and the leaders, Fareham "C".

Portsmouth "C" have also improved their position, following their drawn match with the Fareham team.

In the premier section of the Schools Tournament, Prices "A" are making a strong bid for the championship, while Perchester Modern are challenging Technical High for second place in the "B" Section of the First Division.

RESULTS

Senior Section
Division 3
Portsmouth "C" 2½, Fareham "C" 2½ (C. J. Campion 5, R. J. Tyack 5); J. E. Smith 5, B. A. Keen 5; E. J. Curry 8, D. A. Hoxness 1, B. J. Price 1, G. Houghton 0, R. J. Woods ½, C. Pines ½).
St John's "B" 2½, Gosport "B" 1½ (A. Clark 1, D. Hogg 0, C. Moore 0; Fayers 8, P. Miller 8, F. Bennett 1, C. Dawes 1, A. F. Ferrer 0; B. Davis 5, Mrs. L. Clear 5).

Schools Section
Division I (Section A)
Prices "A" 2½, St John's "C" 2½ (H. Curtis 1, P. Penberton-James 8, R. Tyack 8, D. Peniston-Bird 1; B. A. Keen 1, Default 0; C. Goy 8, A. Clark 1, A. Barkhousen 5, C. Dawes ½).
Portsmouth Grammar "B" 2, Prices "A" 2 (P. M. Collins 1, H. Curtis 8; D. Watkins 8, R. Tyack 1, M. Sandercombe 8, B. A. Keen 1; T. Moore 1, M. Earry 0; I. Mansell 8, A. Barkhousen 1).

Division I (Section B)
Technical High "A" 2, Perchester Modern 2 (J. Hill 1, D. Cooke 8; E. Gander 8, W. Wallen 1, G. Arnold 8, C. Ward 1; M. Pelling 1, D. Magley 8, E. Tringham 8, N. Tindal 1).

Division II
Fareham Secondary 8, St John's "E" 1 (C. Pines 8, A. Lakin 1, G. Houghton 8, M. Rice 1; T. Bailey 8, C. Leake 1; B. Goodchild 8, B. O'Brien 1; R. Bailey 8, C. Malone 1).

TABLE

SENIOR SECTION				
DIVISION 3				
	P	W	D	P
Portsmouth "A"	1	4	0	24½
Cosham "A"	1	5	0	22
Fareham "A"	1	5	0	20
S.N.P.L.	1	2	1	18½
Quinn, Chr.	1	1	1	11½
Perk. Gram. "A"	1	1	0	15½

DIVISION II				
	P	W	D	P
Portsmouth "B"	8	9	0	16
Gosport "A"	1	5	0	24
Fareham "B"	1	4	0	20½
Cosham "B"	1	2	0	11
St John's "A"	1	2	0	18
De Havillands "A"	1	1	0	15½

DIVISION 1				
	P	W	D	P
Fareham "C"	8	4	2	20
St John's "B"	8	5	0	19½
Portsmouth "C"	1	5	0	17½
Gosport "B"	1	2	2	17
De Havillands "B"	1	2	1	15½
Clymound "B"	1	0	0	8

SCHOOLS SECTION
Division I (Section A)
St John's "C" 1, P.W.D. 1, G. P. 1, Prices "A" 1, 2, 2, 16, 4, Gosport Grammar "B" 4, 1, 8, 18, 1, Pmo Grammar "B" 4, 1, 8, 18, 1, Parkbrook "A" 5, 0, 8, 8, 8.

DIVISION 1 (Section B)				
	P	W	D	P
St John's "D"	5	3	0	22
Technical High "A"	8	2	1	16½
Perchester Modern	2	1	0	5
Gosport Grammar "B"	2	1	0	5
Parkbrook "B"	2	0	0	2

DIVISION 2				
	P	W	D	P
St John's "E"	4	4	0	20
Technical High "B"	2	2	0	18½
Pmo Grammar "C"	2	1	0	15½
Perk. Gram. "C"	4	1	0	15
Fareham Secondary	2	1	0	3
Prices "B"	4	0	0	8
Gosport Grammar "C"	2	0	0	2

Scores so far received in the 8th round of the Portsmouth and District Individual Championship are: West 4, Richardson 1, Evans ½, Watson ½; Price 1, Bramfield 8, Grant 8, Page 1; Howard 5, Blomson ½; Lee 8, South (H.) 1; Davis 8, Muir 1; Collins 8, Wells 1.

HAMPSHIRE LEAGUE

Cosham jump from 8th to 4th place in the Hampshire League Table following their win against Andover.

In this match, young Roger Page proved to play for the County was to beat the County Secretary. He has been duly invited to take part in the next All-England match on Saturday.

Southampton are also improving their position, but it does not seem from today that they can overtake the two leading teams.

RESULTS

Salisbury 1½, Southampton 2½ (P. Allen 1, J. Valler 8, W. R. Hall 8, D. A. Rawden ½, F. S. Scarce 8, G. L. Pritchard 1, F. K. Barber 8, P. L. Marshall 1; A. J. Hooley 8, A. C. Barton 1).

TABLE				
	P	W	D	P
Fareham	1	4	0	24½
Portsmouth	1	4	0	22
Southampton	2	1	1	11
Cosham	1	2	1	11
Bournemouth	1	2	1	11
Young Pumpkins	1	1	1	11
Woolston	1	2	1	11
Salisbury	1	2	1	11
Andover	1	0	0	2

PROBLEMS

The key move in last week's problem was Q-QN 8 (with threat Q-N4). Unfortunately, the White Bishop was misplaced on the diagram. It should have been on K4 not E5. The position published in this week was sent in by B. A. Keen of Price's School and Fareham Chess Club. He does not say whether it was composed or arose from actual play. In any case, it is an interesting example of a forced mate in 3 moves.

LATE NEWS

De Havillands "B" 2½, Clymound (P.S.) Gosport Grammar "B" 1, St John's "B" 4, Gosport Grammar "B" 4, Gosport "A" 1.

Chess Notes

Needle Match With Oxfordshire

THE score in the Hampshire v. Oxfordshire match stands at seven games to seven with six for adjudication. Boards 6 and 14 look like wins for Hampshire and Boards 7, 12 and 19 could well be draws. A narrow win is therefore expected over the full 20 boards.

Five local players took part and obtained three points between them.

Full scores (Hampshire names first):—

Bd. 1: M. W. Thompson ½, J. Walker ½, Bd. 2: Cmdr. A. J. Peters (Hayling Island) 0, A. Hollis 1, Bd. 3: M. E. Ventham ½, M. Collins ½, Bd. 4: D. McCue ½, J. Footner ½, Bd. 5: P. A. Ursell 0, W. Turner 1, Bd. 6: L. C. Walters A, H. Booth A, Bd. 7: A. C. Barton A, N. Wilson A, Bd. 8: (default) 0, A. Footner 1, Bd. 9: A. F. Brameld (Gosport) 1, P. Ralph 0, Bd. 10: C. H. Henshaw 1, A. Baker 0, Bd. 11: Shepherd 1, M. Bruton 0, Bd. 12: B. D. Harding A, A. Leggett A, Bd. 13: T. De Buriatte (Fareham) 0, M. Bridgen 1, Bd. 14: L. E. Vine A, B. Dickinson A, Bd. 15: F. R. Carter 0, R. Watts 1, Bd. 16: S. L. Russell ½, Dr. N. Lawrence ½, Bd. 17: A. S. La Lond (Fareham) 1, Rev. H. Taylor 0, Bd. 18: J. B. Parker A, A. Coulson A, Bd. 19: D. G. Groves A, D. Del Neve A, Bd. 20: J. H. Jones (Gosport) 1, F. Wood 0.

Five of the seven rounds in the County Individual have now been completed, and M. Thompson (Southampton) and L. E. Vine (Eastleigh) at present share the lead with 4½ points each. Nearest rivals are C. H. Henshaw (Basingstoke) with 3½ points

and B. D. Harding, A. M. Edmonds and S. L. Russell, with with 3 points.

PORTSMOUTH LEAGUE

There has been a fair crop of results this week in the Portsmouth League.

In Division I of the Senior Section, Cosham dropped a precious half-point, while Portsmouth "B" are now certain of becoming Div. II champions. In the Schools Section it is nearly all St John's College, but Price's School is still well in the running for the championship.

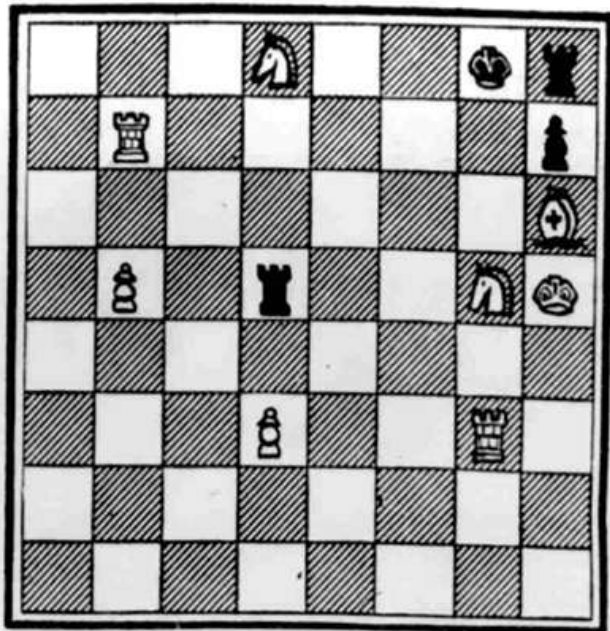
SENIOR SECTION

Division I.—Cosham "A" 2½, R.N.P.L. 2½, R. L. Paige 1, A. F. Brameld 0; G. Richardson 0, W. J. Eaton 1; S. C. Noke ½, P. J. Colson ½; T. E. Hollington 0, J. H. Jones 1; A. D. Crossin 1, E. Taylor 0.

Division II.—Portsmouth "B" 4, Gosport "A" 1, W. Makar 0, J. H. Jones 1; J. P. Price 1, J. Hardcastle 0; G. Feltham 1, A. N. Dossert 0; A. Bacon 1, R. Clark 0; C. J. Campion 1, G. Mellows 0.

St John's "A" 3, Cosham "B" 2, R. Pemberton-James 1, H. C. Smith 0; D. Peniston-Bird 0, M. Leggett 1; C. Thomas 0, S. Lamb 1; K. Harrison 1, R. P. L. Brett 0; A. Lakin 1, J. Hodakinson 0.

Division III.—De Havillands "B"



White to move and mate in two.

3½, Cyanamid "B" 1½, K. Lawrence 1, default 0; S. Harris 1, R. Rudgley 0; J. Simmons ½, A. Yarrow ½; G. Mathews 0, B. Hooper 1; D. Walker 1, default 0.

SCHOOLS SECTION

Division I (Section A).—Gosport Grammar "A" 2, St John's "C" 3, R. Jones 0, D. Peniston-Bird 1; W. Rance 0, C. Thomas 1; C. Pringle 0, K. Harrison 1; R. Webb 1, F. Arlbarg 0; G. Williams 1, R. Shaw-Brown 0.

Division II (Section B).—Gosport Grammar "B" 1, St John's "D" 4, A. Cocks 0, A. Clark 1; R. Crowe 1, C. Moore 0; A. Dellbridge 0, P. Miller 1; R. Stubbington 0, C. Dawes 1; D. Lowe 0, B. Davis 1.

Division III.—Gosport Grammar "C" 0, St John's "E" 5, R. Moore 0, A. Lakin 1; C. Jones 0, M. Rice 1; L. Stubbington 0, C. Leake 1; J. Harrington 0, B. O'Brien 1; S. Goldgewicht 0, K. Taylor 1.

TABLES

SENIOR SECTION					
Division I					
	P	W	D	G	P
Portsmouth "A"	7	6	0	24½	6
Cosham "A"	8	5	1	24½	5½
Fareham "A"	7	4	1	20	4½
R.N.P.L.	8	2	3	21	3½
Comm. Ctr.	7	1	1	11½	1½
Portis. Gramm "A"	7	1	0	8½	1

Division II					
	P	W	D	G	P
Portsmouth "B"	9	9	0	34	9
Gosport "A"	8	5	0	25	5
Fareham "B"	7	4	0	20½	4
St John's "A"	8	3	0	19	3
Cosham "B"	8	2	0	13	2
De Havillands "A"	8	1	0	8½	1

Division III					
	P	W	D	G	P
Fareham "C"	6	4	2	20	5
St John's "B"	6	5	0	19½	5
Portsmouth "C"	7	2	3	17	3½
De Havillands "B"	7	3	1	17	3½
Gosport "B"	7	2	2	17	3
Cyanamid	7	0	0	9½	0

SCHOOLS SECTION

Division I (Section A)					
	P	W	D	G	P
St John's "C"	6	4	2	20	5
Prices "A"	5	3	2	16	4
Gosp. Gramm. "A"	2	1	0	5	1
Portis. Gramm. "B"	4	1	0	10	1
Purbrook "A"	5	0	0	4	0

Division I (Section B)

	P	W	D	G	P
St John's "D"	6	6	0	26	6
Tech. High "A"	6	3	1	16½	3½
Portchester Mod.	6	3	1	14½	3½
Gosp. Gramm. "B"	3	1	0	6	1
Purbrook "B"	7	0	0	7	0

Division II

	P	W	D	G	P
St John's "E"	6	6	0	27½	6
St John's "F"	4	4	0	20	4
Tech. High "B"	4	2	0	8	2
Portis. Gramm. "C"	2	1	0	4½	1
Purbrook "C"	4	1	0	6	1
Fareham Sec.	3	1	0	3	1
Prices "B"	4	0	0	4	0
Gosp. Gramm. "C"	3	0	0	2	0

At the end of the sixth round in the Portsmouth and District Individual Championship, Dr. B. G. Wells (Portsmouth) has moved into the lead with five points.

In second place are Dr. A. J. Pointon (Portsmouth), T. E. Hollington (Cosham), P. M. Collins (Portsmouth Grammar), J. H. Jones (Gosport) and G. Richardson (Cosham), all with 4½ points.

With two more rounds to go, it looks like being a very close finish this year.

FRIENDLY MATCH

A friendly match on 10 boards was played between De Havilland and A.S.W.E. (Portsdown), which the Admiralty Establishment won by 6½ games to 3½. It is interesting to know that chess is still alive at A.S.W.E. and it is hoped that they will be returning to League play next season.

Scores (De Havilland names first):—
Bd. 1: Langley 0, Underhill 1, Bd. 2: Smith (B.) 1, Evans 0, Bd. 3: Harris 0, Ross 1, Bd. 4: Shepherd 0, Levy 1, Bd. 5: Ralls 0, Ratter 1, Bd. 6: Feasey 0, Davis 1, Bd. 7: Walker 1, Bayliss 0, Bd. 8: Compton 1, Smith (S.) 0, Bd. 9: Lawrence 0, Carver 1, Bd. 10: Woods ½, Knight ½.

POSTAL CHESS

Further results in the County and District Correspondence Chess Championship, 1961, are as follows:

Hants I

Bd. 1: R. C. Mitchell lost to T. H. George (Essex).
Bd. 6: D. A. Rawden lost to Dr. B. G. Dudley (Worces).
Bd. 26: S. C. Noke (Cosham) beat A. F. Stammwitz (Middlesex).
Bd. 27: T. E. Hollington (Cosham) drew with W. Hearn (Suffolk).
Total score to date: Two points from six games completed.

Hants II

Bd. 15: H. C. Smith (Cosham) lost to T. C. Hughes (Glam).
Bd. 23: M. A. Jope beat W. H. Thomas (Mon).
Bd. 26: W. Rose lost to D. Machin (Northants).
Total score to date: One point from four games completed.

PROBLEM

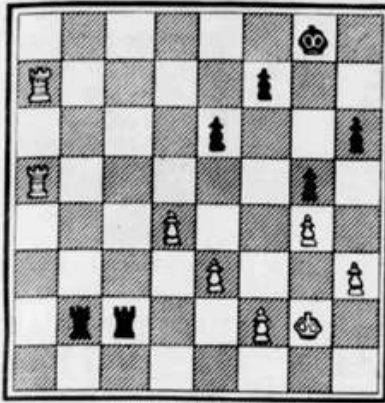
The solution to last week's five-mover was 1... R x P+; 2. P x R, Q x P+; 3. K-Q2, Q-Q6+; 4. K-B1, R-B1+; 5. Q-B7, Q x Q mate (if 2... K-Q2, Q x Q+; 3. K-K3, R-B6+; 4. R-Q3, R x R mate).

This week we have another five-mover composed by W. E. Caine, of Southsea.

LATE RESULTS

Schools Section of Portsmouth League: Portsmouth Grammar "B" 3, Purbrook "A" 2; St John's "D" 1½; Technical High "A" 3½; Gosport Grammar "B" 2, Portchester 3; Portsmouth Grammar "C" 4, Purbrook "C" 1.

BLACK (SEVEN PIECES)



WHITE (EIGHT PIECES)

Hampshire Finish in Fine Style

HAMPSHIRE finished the season's fixture list with a very satisfactory performance against Buckinghamshire. The score in the S.C.U. match stands at 9½ to 5½ in Hampshire's favour, and the score over the whole 50 boards in the Amboyna Shield contest is 23½—20½, with six for adjudication.

It is practically certain therefore that Hampshire will comfortably win both matches.

Local clubs were again well represented, twelve players collecting seven points, with one game unfinished. Particularly commendable was the performance of our four Juniors on Boards 6, 18, 20 and 32.

DETAILED SCORES

Bd. 5. Cmdr. A. J. Peters (Hayling Island) drew with E. B. Sandercock. Bd. 8. A. V. Bramwell (Gosport) beat Dr. Harwood.

Bd. 8. Dr. A. J. Poulton (Portsmouth) — game undischess.

Bd. 18. H. Jones (Gosport) drew with W. Gayman.

Bd. 19. G. de Barlatte (Fareham) beat C. A. Vivas.

Bd. 20. P. M. Collins (Portsmouth Grammar) beat E. W. Woolford.

Bd. 22. W. Makar (Portsmouth) beat R. Boka.

Bd. 25. J. E. C. Grant (Fareham) beat D. B. James.

Bd. 28. J. P. Pritch (Portsmouth) lost to A. N. Bradie.

Bd. 28. A. F. Garner (Fareham) lost to J. Bryant.

Bd. 29. R. L. Paige (Cosham) lost to A. J. Cling.

Bd. 31. M. Grant (Fareham) lost to G. Lancaster.

PORTSMOUTH LEAGUE

Interest is mostly centred on the Schools Section as teams hasten to complete their fixtures before the Easter holidays.

Price's School have drawn level with St John's, and it seems likely to be a close finish in Section A of Division I.

In Section B, St John's "D" are now certain of heading the table, and have earned the right to challenge the winners of Section A for the Schools' Championship title. Both Technical High and Putechester Moderns have done very well in this section, and they will be keen competitors between these two teams for second place.

In Division II, the two St John's teams continue to pull away from the rest of the field, and one or the other is practically certain of the "Under-15" title.

RESULTS

SENIOR SECTION

Division III

De Havilland "C" 2 Portsmouth "C" 1. (B. Moody & J. E. Smith 1; E. Harris 1; E. J. Cobby 1; J. Summings 1; Woods 1; K. Lawrence 1; DePaul 1; E. E. Fray 1; Default 1).
Fareham "C" 3 St John's "B" 1. (J. Johnson & A. Clark 1; R. Track 1; C. Moore & B. A. Kren 1; A. Lakin & G. Buxton 1; F. Brown & C. Piers & M. Rice 1).
Cyanamid "B" 1; St John's "B" 1/2. (H. H. J. Wood 1; A. Clark 1; B. Dawson 1; C. Moore 1; R. Hooper 1; P. Miller 1; R. Roddy 1; C. Dawes 1; A. Yarnes 1; A. Lakin 1).

SCHOOLS SECTION

Division I (Section A)

Portsmouth Grammar "A" 2, Putechester "A" 2. (P. M. Collins 1; A. G. Gendall 1; Default 1; R. Cook 1; C. Grant 1; R. Warren & D. Walker 1; D. Thomas & I. Mansell 1; K. Pitt 1).
St John's "C" 4, Gosport Grammar 1. (P. Pomeroy-Jones 1; R. Moore & D. Peniston-Bird 1; M. Jones 1; A. Clark 1; R. Wilson 1; A. Lakin 1; W. Hance & M. Rice 1; G. Williams 1).

Parbrook "A" & Price's "A" 5. (S. Lane & H. Curtis 1; A. Leadbetter & R. Track 1; B. Warren & B. A. Kren 1; D. Thomas & A. Barkhayan 1; R. C. Hill & C. Gay 1).
Gosport Grammar "A" 2, Price's "B" 1. (R. Jones 1; H. Curtis & R. Track 1; R. Jones & A. Barkhayan 1; M. Jones 1; C. Dawes 1; C. Gay 1).

Division I (Section B)

St John's "D" 1, Technical High 1. (J. A. Clark 1; Hill 1; C. Moore 1; G. Arnold 1; P. Miller & E. Gendall 1; C. Dawes 1; M. Poulton 1; A. Lakin & R. Tringham 1).
Gosport Grammar "B" 1, Putechester Modern 1. (R. Webb 1; D. Coster 1; R. Crowe 1; W. Walters & D. Lowe 1; N. Under 1; R. Shabington & D. Moulding 1; A. Cocks 1; S. Harvey 1).

St John's "D" 4, Gosport Grammar 1. (P. Miller 1; C. Moore & R. Crowe 1; I. B. Shabington & B. Dawson 1; B. Shaw & G. Leake 1; Default 1).

Division II

Portsmouth Grammar "C" 4, Parbrook "C" 1. (I. Hols 1; D. Nicholson 1; H. Groom 1; D. Pritchard & M. Elliott 1; P. Voss & D. Brown 1; C. Lott 1; J. Mucklow 1; A. Jarvis 1).

St John's "F" 3, Gosport Grammar 1. (J. G. Hawkins 1; L. Shabington 1; G. Galloway 1; Harrington 1; R. Nichols & C. Jones 1; S. Keeley 1; A. Cocks & R. Staver 1; S. Sandercock 1).

Gosport Grammar "C" 4, Price's "B" 1. (G. Harrington 1; R. Dalton & R. Crowe & I. Crawford 1; A. Cocks 1; D. Weston 1; L. Shabington 1; C. Jones & S. Goldswich 1; P. Prybycin 1).

TABLES

SENIOR SECTION

Division I

Team	P	W	D	G	Pt
Portsmouth "A"	1	0	0	0	0
Cosham "A"	1	0	0	0	0
Fareham "A"	1	0	0	0	0
R.N.P.L.	1	0	0	0	0
Comm. Centre	1	0	0	0	0
Portsmouth Grammar "A"	1	0	0	0	0

Division II

Team	P	W	D	G	Pt
Portsmouth "B"	1	0	0	0	0
Gosport "A"	1	0	0	0	0
Fareham "B"	1	0	0	0	0
St John's "A"	1	0	0	0	0
Cosham "B"	1	0	0	0	0
De Havilland "A"	1	0	0	0	0

Division III

Team	P	W	D	G	Pt
Fareham "C"	1	0	0	0	0
St John's "B"	1	0	0	0	0
De Havilland "B"	1	0	0	0	0
Portsmouth "C"	1	0	0	0	0
Gosport "B"	1	0	0	0	0
Cyanamid "B"	1	0	0	0	0

SCHOOLS SECTION

Division I

Team	P	W	D	G	Pt
St John's "C"	1	0	0	0	0
Price's "A"	1	0	0	0	0
Portsmouth Grammar "B"	1	0	0	0	0
Gosport Grammar "A"	1	0	0	0	0
Parbrook "A"	1	0	0	0	0

Division II

Team	P	W	D	G	Pt
St John's "D"	1	0	0	0	0
Tech. High "A"	1	0	0	0	0
Portsmouth "D"	1	0	0	0	0
Gosport Grammar "B"	1	0	0	0	0
Parbrook "B"	1	0	0	0	0

Division III

Team	P	W	D	G	Pt
St John's "E"	1	0	0	0	0
St John's "F"	1	0	0	0	0
Portsmouth Grammar "C"	1	0	0	0	0
Tech. High "B"	1	0	0	0	0
Gosport Grammar "C"	1	0	0	0	0
Parbrook "C"	1	0	0	0	0
Fareham "D"	1	0	0	0	0
Price's "B"	1	0	0	0	0

The match between Gosport Community Centre and Southern Community Centre ended in a draw after the game Jones v. Dawson had gone for adjudication.

This was another contest in the annual competition organized by the Hampshire Federation of Community Centres.

Scores (Gosport names first). — A. V. Bramwell & W. Makar 1; W. J. Eaton 1; J. P. Price & J. H. Jones 1; A. Bacon 1; P. J. Calcutt 1; C. J. Campion 1; E. Taylor 1; J. E. Smith 1.

PROBLEM

The key move in last week's "Two-Move" was R—N4.

This week we have a position from actual play in the Schools Section.

Technical High had the honour of being the first school team to beat St John's this season. The result of this match rested on the adjudication of an unfinished game between C. Moore (St John's) and G. E. Arnold (Technical High).

It so happens that the League Adjudicator found the position most interesting, and it was therefore thought to be well worth publishing.

The Adjudicator's remarks were as follows:—

"An excellent example of the power of two Rooks on the seventh rank. White is denied of his King side pawns and Black wins, the point being that Black can not only gain material but can also protect his own King against an attack by White on Black's seventh rank."

The Adjudicator gave at the same time a considerable amount of detailed analysis, but readers are left to work it out for themselves.

LATE NEWS

Fareham "A" 4½, Portsmouth Grammar "A" 1½. (Fareham "A" now dead level with Cosham "A").

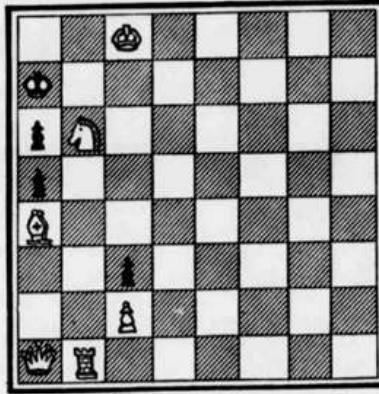
GUILD MEETING

Mrs. D. A. E. Dykes (President) presided at a meeting of the Leesland Women's Co-operative Guild when resolutions for the Guild's Annual Congress were read.

A report of the District Annual Conference was read by Mrs. D. Seymour and mystery prizes were won by Mesdames D. Jordan and P. Trill.

Chess Notes

BLACK (four pieces)



WHITE (six pieces)
White to move and mate in two.

HAMPSHIRE GAIN TWO GOOD WINS

AS confidently predicted last week, the results of the adjudications of the six unfinished games in the recent match against Buckinghamshire gave Hampshire two good wins.

The final score in the S.C.C.U. Championship match was 12½-7½, while over the full 50 board in the Amboyna Shield competition, the result was 27-23.

Details of adjudications. — A. C. Barton ½, C. J. Stapley ½; P. L. Marshall ½, A. Niedzwiedz ½; Dr. A. J. Pointon (Portsmouth) 1, D. G. Summers ½, C. H. Henshaw ½, E. G. Exell ½; B. D. Harding ½, A. Lorman ½; M. D. Thompson ½, G. Morduch ½.

The results of the three unfinished games in the earlier Oxfordshire match are still not available.

PORTSMOUTH LEAGUE

Fareham "A" have drawn level with Cosham in Division I of the Senior Section, and although not yet officially reported, there is a strong rumour that Portsmouth "A" lost to Community Centre. It can, therefore, be a very close and exciting finish.

In the Schools Section, the result of the second match between St John's "C" and Prices School (previously recorded as a draw) has been deleted from the records, as there is some uncertainty over the result of one of the games. This leaves these two teams still level.

St John's "E" are the new "Under-15" champions and will, in due course, be playing their counterparts in the Southampton League for the Spedan-Lewis Trophy.

RESULTS

Division I. — Fareham "A" 4½, Portsmouth Grammar "A" ½; (W. H. Pratten ½, P. M. Collins ½; P. Cartmell 1, D. Watkins ½; 4; Bursate 1, T. Moore ½; W. C. Martin 1, A. Fulton ½; A. S. La Lend 1, I. Mansell ½).

Division II. — De Havilland "A" 1½, Fareham "B" 3½; (B. Smith ½, A. J. Evans 1, L. Longley ½, G. Raiter 1; S. Shepherd ½, A. C. Stow 1; R. Ralls ½, T. Bayliss ½; K. Lawrence 1, Default ½).

Division III. — Portsmouth "C" 3, St John's "B" 2; (C. J. Campion ½, A. Clark ½, J. E. Smith ½, C. Moore ½; B. J. Press 1, P. Miller ½; E. J. Cauty 1, C. Dawes ½; R. Wood ½, A. Lakin 1).

SCHOOLS SECTION

Division I. — St John's "E" 3½, St John's "F" 1½; (A. Lakin 1, L. Gallaway ½, M. Rice ½, J. Hawkins ½; C. Leake ½, S. Keeley ½; B. O'Brien ½, R. Stavert ½; K. Taylor 1, P. Jones ½). Purbrook "C" 2½, Prices "B" 1½; (D. Nicholson 1, 4; Earrey ½, S. Fritchard ½, I. Crawford 1; R. Francis 1, N. Davies ½; M. Grant ½, D. Weston ½; P. Voss ½, C. Jones 1).

SENIOR SECTION

	P	W	D	G	P
Portsmouth "A"	7	6	0	24½	6
Cosham "A"	8	5	1	24½	5½
Fareham "A"	8	5	1	24½	5½
R.N.P.L.	8	2	3	22	3½
Comm. Centre	7	1	0	21½	1½
Portsmouth Grammar "A"	8	1	0	9	1

DIVISION II

	P	W	D	G	P
Portsmouth "B"	9	9	0	34	9
Gosport "A"	8	5	0	25	5
Fareham "B"	8	3	0	19	3
St John's "A"	8	3	0	19	3
Cosham "B"	9	1	0	18	1
De Havilland	9	1	0	18	1

DIVISION III

	P	W	D	G	P
Fareham "C"	7	5	2	22	6
St John's "B"	9	6	0	28	6
De Havilland "B"	8	4	1	28	4½
Portsmouth "C"	9	3	3	22	4½
Gosport "B"	7	2	2	17	3
Cyanamid "B"	8	0	0	18	8

SCHOOLS SECTION

DIVISION I

	P	W	D	G	P
St John's "C"	6	5	1	21½	5½
Prices "A"	6	5	1	21½	5½
Portsmouth Grammar "B"	5	2	0	13	2
Gosport Grammar "A"	4	1	0	9	1
Purbrook "A"	7	0	0	6	0

DIVISION II

	P	W	D	G	P
St John's "D"	8	7	0	21½	7
Feck. High "A"	7	4	1	28	4½
Portchester Med.	7	4	1	17½	4½
Gosport Grammar "B"	5	1	0	9	1
Purbrook "B"	7	0	0	7	0

DIVISION III

	P	W	D	G	P
St John's "E"	7	7	0	21	7
St John's "F"	6	5	0	25	5
Portsmouth "C"	3	2	0	8½	2
Feck. High "B"	4	2	0	8	2
Purbrook "C"	6	1	1	9½	1½
Gosport Grammar "C"	3	1	0	3	1
Fareham Sec.	3	1	0	3	1
Prices "B"	6	0	1	7½	1½

LATE NEWS. — Community Centre 3, Portsmouth "A" 2; St John's "A" 4½, Portsmouth "B" ½; St John's "B" 4, De Havilland "B" 1; St John's "C" 3, Portsmouth Grammar "B" 2; Portsmouth Grammar "B" 3, Gosport Grammar "A" 2.

The response to the appeal in this column for original material was much better than expected and has been sufficient to provide something for publication each week throughout the season. So as to provide a good stock of material for next season, however, readers are urged to send in anything of interest, now, and during the summer months.

PROBLEM

This week we have a problem submitted by Mr. Moir of Portchester.

Chess Notes

Fareham Need One Win to Keep Title

FAREHAM beat Portsmouth in that vital First Division match, which will quite probably mean that they retain the Portsmouth and District League Championship title. The Fareham team has one more match to play (v. Cosham) and if they win, they are champions.

Portsmouth were unlucky in that circumstances necessitated their fielding a much weakened team, and perhaps Fareham were fortunate that W. C. Martin has returned to the fray at this crucial stage.

Whatever the outcome, this season has provided a close and exciting struggle between the three leading clubs.

In the same Division, R.N.P.L. scored a win against a depleted Community Centre team which seems to be dogged by illness of its playing members.

Apart from these two results, the holidays, the Dupree Tournament and the Bognor Congress have combined to make it a practically blank week so far as matches are concerned.

RESULTS

SENIOR SECTION
 Division 1. — Portsmouth "A" 2, Fareham "A" 2 (Dr. A. J. Puntton 1, T. de Barante 0, W. Makar 0, R. Cattell 1; H. C. Bailey 0, W. C. Martin 1; D. M. Heywood 0, A. S. La Laid 1; W. Woodthorpe 1; F. Johnson 0, R.N.P.L. 4, Community Centre 1, (Dr. J. Eaton 1, Default 0; A. F. Brameld 1, B. S. Carter 0; P. J. Cason 0, A. Bayes 1; E. Taylor 1, Default 0; H. W. Tripp 1; M. James 1).

Team	P	W	D	G	P
Fareham "A"	9	6	1	25½	45½
Portsmouth "A"	9	6	0	24½	45
Cosham "A"	9	5	1	24½	39½
R.N.P.L.	9	2	2	25	44½
Comm. Centre	9	2	1	15½	29½
Portsmouth "B"	9	1	0	9	1

Team	P	W	D	G	P
Portsmouth "B"	10	9	0	24½	49
Gusport "A"	9	5	0	27	41
Fareham "B"	9	5	0	24	41
St John's "A"	10	5	0	20½	35½
Cosham "B"	9	2	0	13	27
Dr. Havillands	9	1	0	10	1

Team	P	W	D	G	P
St John's "B"	10	7	0	22	47
Fareham "C"	9	5	0	23	46
Portsmouth "C"	9	2	2	22	40½
Dr. Havillands "B"	9	4	1	21	40½
Gusport "B"	9	2	1	17	34½
Cranford "B"	9	0	0	10	0

HAMPSHIRE LEAGUE

The Portsmouth League match reported above was mutually agreed by Fareham and Portsmouth, to count as in the Hampshire League contest. This puts Fareham at the top of the table, with all their fixtures completed.

They have now the rather trying experience of waiting to see if either Portsmouth or Young Pompeians can overtake them.

Both these teams won their latest matches and it can still be a very close thing.

The one thing now certain, however, is that the Hampshire League Trophy will come to Portsmouth and District after a very lengthy sojourn in the Southampton area.

Scores. — Young Pompeians 5, Andover 4; (P. M. Collins 1, C. H. Houslay 0; M. J. Dymond 1, S. L. Russel 0; A. F. Brameld 1, W. A. Heward 0; M. March 1, L. A. Porter 1; J. H. Jones 1, J. Miles 0), Woodson 2, Portsmouth 2 (A. M. Edmonds 1; Dr. A. J. Puntton 1; G. Daw 1; Dr. B. G. Wells 0; R. S. Learmouth 1; Lieut. D. K. Butler 1; M. D. Thomson 0; W. Makar 1; H. G. Hill 0; D. M. Heywood 1).

The result Woodson v. Portsmouth also counts for the Hampshire Federation of Community Centres contest.

TABLE

Team	P	W	D	G	P
Fareham	9	6	0	23	46
Portsmouth	9	5	0	23½	45½
Young Pompeians	9	5	1	17	30½
Southampton	9	5	1	17	30½
Cosham	9	5	0	15	30
Bournemouth	9	2	0	15	27
Woodson	9	2	0	14½	27
Salisbury	9	2	0	14	27
Andover	7	1	0	8	1

POSTAL CHESS

After a rather bad start, Hampshire's No. 1 team is now picking up and has a 50 per cent. score.

The second team is not doing quite so well and are only averaging 33½ per cent. to date.

Hampshire I. — A. M. Edmonds beat O. Murdoch (Bucks); H. L. Paterson drew with E. G. Walker (Somerset); S. L. Russell beat H. R. Jenkins (Lanex). Total score to date 4½ points from nine games.

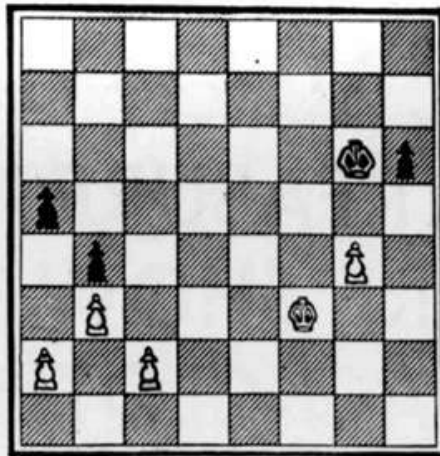
Hampshire II. — A. F. Garner lost to T. M. Gregory (Cumberland); H. J. Deane beat A. E. Fisher (Mon); H. R. Muir drew with W. H. Snell (Cornwall); M. G. Ford drew with S. Metcalfe (Durham); J. H. Jones lost to D. H. Long (Leicestershire). Total score to date — three points from five games.

COUNTY NEWS

The results of the five unfinished games in the Hampshire v. Oxfordshire match were as follows:—1. C. Walters 1, H. Booth 0; A. C. Barton 1, N. Wilson 1; B. D. Harding 0, A. Leggett 1; L. E. Vine 1, B. Dickinson 0; J. B. Parker 0, A. Coulson 1; D. G. Graves 0, D. del Nevo 1.

The final score was Hampshire 3, Oxfordshire 2.

Some round County individual results



White to move and win.

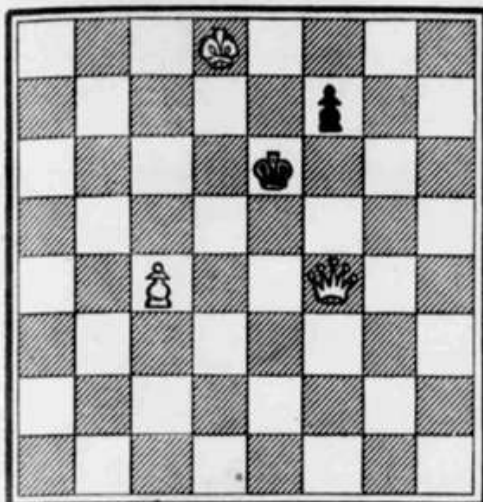
so far received are, — Harding 1, Vine 0; Hollington ½, Marshall ½; Hocking 0, Brameld 1.

PROBLEM

This week we have an interesting End-game study sent in by Mr. J. L. Smith of Portsmouth. White is to play and wins in six moves. Full solution next week.

Chess Notes

Problem by W. E. CAINE (SOUTHSEA)
BLACK (Two Pieces)



WHITE (Three Pieces)
White to move and mate in two.

Young Pompeians Silence Critics

OUR local team of "teenagers," the Young Pompeians, were in devastating form when they met Salisbury, and are making a very determined bid for the Hampshire League title. The vital match in this competition is Portsmouth v. Young Pompeians, the result of which should be available next week.

The Young Pompeians came into being only this season and their creation was something in the nature of a protest by a group of "Angry Young Men." Feeling frustrated that they were not being taken seriously enough by the older players (who pick the teams!), they got together and formed a team of their own with the intention of proving their ability.

There were some misgivings among the more conservative elements of the local chess world, but it may as well be said that the youngsters have already more than proved their point.

If they now manage to gain the championship in their first season, it will be a very remarkable achievement indeed.

Result.—Salisbury 9, Young Pompeians 3 (P. S. Scanes 9, P. M. Collins 1; W. Watson 0, M. J. Dymond 1; J. D. Herring 0, A. F. Brameld 1; C. Lingard 0, M. March 1; G. Collins 0, J. H. Jones 1)

	P.	W.	D.	G.	P.
Fareham	8	6	9	23	6
Portsmouth	7	5	8	23½	3
Young Pompeians	6	4	1	22	4½
Southampton	7	2	1	27	2½
Cosham	6	3	8	15	3
Bournemouth	6	3	8	13	3
Woolston	6	2	8	14½	2
Salisbury	7	2	8	14	2
Andover	7	1	8	1	1

PORTSMOUTH LEAGUE

There have been no match results reported during the week. In the Individual Championship the pairings for the final round have been delayed because of the postponement of certain key games in the penultimate round.

Sixteenth round results so far to hand are:—Wells 9, Panton 1; Hollington 8, Collins 1; Paige 1, Adams 4; Watson 1, Comben 9; Evans 1, Smith (J) 0; Crossin 1, Heywood 9; Smith (H) 1, Farmer 9; Moir 9, Brameld 1; Blossom 1, Grant 9.

POSTAL CHESS

Both Hampshire teams continue to improve their overall position following three more results received:
Hants I.—R. S. Learmouth beat A. J. Revell (Suffolk). (Total to date 5½ points from ten games completed).
Hants II.—S. H. Newsome lost to P. Thursfield (Surrey II); G. Yates beat N. D. Mudie (Iste of Man). (Total to date 4½ points from 12 games completed).

SCHOOL CHESS

There seems to be every likelihood of Paulsgrove Secondary Modern School for Boys entering a team in the Schools Section of the Portsmouth and District League next season. The fact that yet another modern school is challenging the grammar

schools is very encouraging, and it is hoped that others will follow Paulsgrove's lead.

It would be helpful if any school chess organizer contemplating such a step would get in touch with the League Secretary straight way, so that the newcomers can take part in any policy discussions during the summer months.

What would be particularly welcome is a team from a girls' school. Surely our local girls are not afraid to match the boys in brain power?

THESE NOTES

Normally this column shuts down for the summer months. Several readers have urged its continuance this year and it is hoped to be able to do so fortnightly.

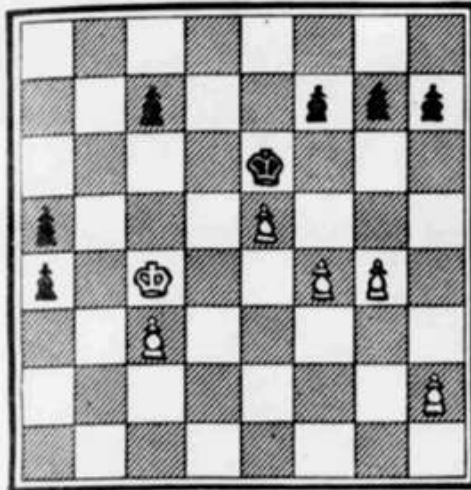
Mr. W. Ross of Cosham has gone a long way to make this a practical proposition by promising to supply a series of short articles on Famous Hampshire Chess Players of the Past. He has already submitted several such articles and has obviously undertaken a good deal of research.

These articles will appear during the summer months when Chess news is in short supply.

PROBLEM

The solution to last week's end-game, as submitted by Mr. J. E. Smith of Portsmouth Chess Club was as follows:

1. P — QN4; 2. P x P e.p.; 3. K — K1; 4. P — N4; 5. P — R4; 6. P — QN4; 7. P x P; 8. K — Q3; 9. KR4; 6. P — R5 and white wins.
This week we have another "two-mover" by Mr. W. E. Caine of Southsea.



White (to move), cannot prevent Black winning.

Championship Issue Gets Wider and Wider

FAREHAM could only manage to draw the vital match against Cosham, and, as a glance at the Tables will show, the Championship issue in the Portsmouth and District League is now more open than ever.

Portsmouth have yet to play R.N.P.L. whilst the score in the match Cosham "A" v. Portsmouth Grammar School stands at 2-1 in Cosham's favour with two games still in the hands of the Adjudicator.

Any one of the three leading teams are therefore still in a position to win the title and never before has there been such a close and exciting finish in this Tournament.

In Division 2, Fareham "B" move up into second place, and in Division 3, Fareham "C" have displaced St John's "B" at the top of the table.

Play has not yet recommenced in the School's Section, but there is one belated result from last term which has only just come to hand and which improves the position of Technical High "B" in Division 2.

RESULTS

SENIOR SECTION

Division 1: Cosham "A" 2½; Fareham "A" 2½; G. Richardson 6, W. H. Prater 1; R. L. Paige 1, P. J. Carmell 9; S. C. Noke ½, J. de Burzatte ½, C. F. Way 1, A. S. La Lond 6; A. D. Crossin 6, W. C. Martin 1.

Division 2: Fareham "B" 3½; Cosham "B" 3½; G. Farmer 1, Default 6, A. J. Evans 1, M. Leggett 6, A. F. Garner 1, R. P. L. Pett 6; D. Ratter 6, S. Lamb 1; T. Bayliss 6, J. Hodgkinson ½.

Division 3: Fareham "C" 4½; Cusamid "B" ½; D. A. Bloxson 1, B. Davies 6; R. Tyack 1, N. H. J. Wood 6; T. Bayliss ½, A. Yarrow ½; P. Wilcock 1, C. Mills 6; G. Houghton 1, B. Hooper 6.

Portsmouth "C" 4; Gosport "B" 1 (C. J. Campion 1, Default 6, F. Woods 1, Default 6, I. J. Cauty 1, P. Bennett 6; J. E. Smith 6, J. Stratton 1; R. J. Press 1, S. G. Lucas 6).
Gosport "B" 1; Fareham "C" 4 (D. Byng 6, D. A. Bloxson 1; P. Bennett 6, R. Tyack 1; Mrs. L. Clear 6; B. A. Keen 1; J. Stratton 1, C. Finns 6; S. G. Lucas 6; G. Houghton 1).

Schools' Section—Division 2: Technical High "B" 4; Fareham Sec. 1 (Tech. High team—Davis 1, J. Robertson 1, D. Bugden 1, J. Briedle 6, R. Bowyer 1. Details of Fareham Sec. team not available).

TABLES

SENIOR SECTION

Division 1	P	W	D	G	P
Fareham "A"	10	6	2	20	7
Portsmouth "A"	9	6	0	24½	6
Cosham "A"	9	5	2	27	6
R.N.P.L.	9	5	1	15½	2½
Custon, Cr.	9	2	1	15½	2½
Ports. Gramm. "A"	8	1	0	9	1

Division 2	P	W	D	G	P
Portsmouth "B"	10	9	0	24½	9
Fareham "B"	9	6	—	27½	6
Gosport "A"	9	5	0	27	6
St John's "A"	10	6	0	26½	4½
Cosham "B"	9	5	0	14½	3
De Havilland "A"	9	1	0	10	1

Division 3	P	W	D	G	P
Fareham "C"	9	7	2	21½	8
St John's "B"	10	7	0	22	7
Portsmouth "C"	10	4	3	20	5½
De Havilland "B"	9	4	1	11	4½
Gosport "B"	9	2	2	19	3
Cusamid "B"	9	0	0	10½	0

SCHOOLS' SECTION

Division 1	P	W	D	G	P
St John's "C"	7	8	1	24½	5½
Prices "A"	6	2	1	21½	5½
Ports. Gramm. "B"	6	2	0	18	1
Gosp. Gramm. "A"	5	1	0	10	1
Purbook "A"	5	0	0	8	0

Division 2	P	W	D	G	P
St John's "D"	8	7	0	21½	7
Tech. High "A"	7	4	1	20	4½
Portchester Mod.	8	4	1	19½	4½
Gosp. Gramm. "B"	6	2	0	12	2
Purbook "B"	6	0	0	7	0

Division 3	P	W	D	G	P
St John's "E"	7	2	0	21	2
St John's "F"	7	0	0	20½	0
Ports. Gramm. "C"	6	0	0	13½	0
Tech. High "B"	6	0	0	12	0
Gosp. Gramm. "C"	6	0	0	11	0
Purbook "C"	6	1	1	9½	1½
Fareham Sec.	4	1	0	4	1
Prices "B"	6	0	1	7½	1½

In the Individual Championship of the Portsmouth and District League, 22 players go into the final round with P. M. Collins (Portsmouth Grammar) and Dr. A. J. Pointon (Portsmouth) sharing the lead with 5½ points each.

Dr. B. G. Wells (Portsmouth), J. H. Jones (Gosport) and G. Richardson (Cosham) all have five points but must rely on the game Collins v. Pointon being a draw if they are to have a chance for the title.

HAMPSHIRE LEAGUE

The Young Pompeians beat Portsmouth and are now only half a point behind Fareham with a match in hand. This is against Woolston and they need only a draw to secure the Hampshire League title and trophy.

Scores: Portsmouth 2; Young Pompeians 3 (Dr. A. J. Pointon 1, M. J. Dymond 6; Lt. D. K. Butler 6, P. M. Collins 1; W. Makar 6; A. F. Brameld 1; J. P. Price ½; M. March ½; D. M. Heywood ½; J. H. Jones ½).

TABLE

	P	W	D	G	P
Fareham	5	6	2	23	5
Young Pompeians	5	5	1	25	5½
Portsmouth	8	5	0	25½	5
Southampton	7	3	1	17	2½
Cosham	6	0	1	15	3
Bournemouth	6	0	1	13	3
Woolston	6	2	0	14½	2
Salisbury	7	2	0	14	2
Andover	7	1	0	8	1

In the County Individual Championship Tournament, pairings for the seventh and final round (with scores to date in brackets) are: Thompson (3½) v. Edmonds (4); Vine (4½) v. Henshaw (2½); Russell (3½) v. Harding (4); Hollington (3) v. Barton (2); Marshall (2) v. Wells (2); Smith (2) v. Hocking (1½); Brameld (3) v. Valter (2½).

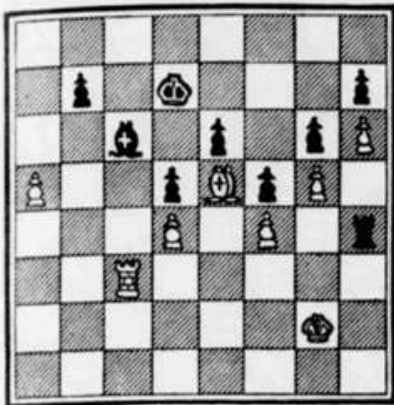
PROBLEM

The key move in last week's problem by Mr. W. E. Caine was Q-B3. This week we have a position from local play that went for Adjudication. It arose in the game R. P. L. Pett (Cosham) v. A. F. Garner (Fareham) in the recent Second Division Portsmouth League match, and provides an interesting example of a forced win by Black in the end-game.

The Adjudicator's "key moves" will be published next week.

LATE NEWS

Hampshire League.—Young Pompeians won 5-3 (by default) against Woolston.
Portsmouth League.—Portsmouth Grammar "A" 1, Cosham "A" 4.



Major Championship Issues Resolved

THE two major championship issues have finally been resolved—Young Pompeians are champions of Hampshire, and Portsmouth Chess Club regain the championship of Portsmouth and District.

This has been a truly remarkable season, with the tension maintained right up to the last moment in both competitions. For a while, no doubt, both Fareham and Portsmouth had visions of securing the "double," but they must feel content that the Hampshire League Trophy has at last come to the Portsmouth district.

PORTSMOUTH LEAGUE

Portsmouth "A" and "Cusham" "A" scored 4-1 wins in their last matches of the season, and the final was in Portsmouth, Cusham and Fareham, with only 2½ games worth separating them. This is the closest finish recorded in this competition. "Cusham" "A" beat Fareham, "B" to become champions in Division II, while Fareham "C" won their final match to become Third Division Champions by two vital points.

RESULTS

SENIOR SECTION
 Division I—Portsmouth Grammar "A" 3, Cusham "A" 4 (P. M. Collins 3, B. A. Page 1, J. F. Watson 4, G. Richardson 1, I. Moore 3, C. F. Was 1, G. Goble 3, S. C. Niles 1, L. Mansell 1, J. Hollington 3); Portsmouth "A" 4, R.N.P.L. 1 (Dr. A. J. Pinner 4, A. J. Brainerd 3, M. Diamond 1, W. J. Eaton 3, W. Makin 1, P. Colton 3, M. March 1, J. H. Jones 3, D. M. Heywood 3, H. J. Taylor 1).
 Division II—Cusham "A" 3, Fareham "B" 1 (J. H. Jones 1, G. W. S. Green 3, J. Hardcastle 3, J. Grant 3, C. Clark 1, E. G. Purdy 1); H. J. Taylor 3, S. F. Garner 1, G. Murray 1, T. H. Baylis 3.
 Division III—Dr. Heylands "B" 3, Fareham "C" 3; H. Woods 3, W. Trank 3, J. Simmons 3, D. A. Bennett 1, D. D. Walker 3, C. Pinner 1, R. Fray 3, G. Hollington 1, S. Harris 1, D. Gault 3).

SCHOOLS' SECTION

Division I—Cusham "A" 2, Gosport Grammar "A" 1; Portsmouth Grammar "B" 3; (R. Jones 3, P. M. Collins 1, C. Pringle 1, D. Wallace 3, Morrison 1, A. Fulton 3, W. Fray 3, G. Goble 1, G. Williams 3, I. Mansell 1).

SENIOR SECTION

Division	P	W	D	L	Pt
Division I					
Portsmouth "A"	18	9	2	2	45½
Cusham "A"	18	8	2	2	42½
R.N.P.L.	18	7	1	2	40
Portsmouth "C"	9	8	1	2	37½
Fareham "A"	9	7	1	2	36
Division II					
Portsmouth "B"	18	9	2	2	45
Cusham "B"	18	8	2	2	42
Fareham "B"	18	7	1	2	40
Cusham "C"	9	8	1	2	37½
Dr. Hardcastle "A"	9	7	1	2	36
Division III					
Fareham "C"	18	8	2	2	42
Portsmouth "C"	18	7	1	2	40
Dr. Heylands "B"	18	4	2	2	37½
Cusham "B"	9	8	1	2	37½
Cusham "C"	9	7	1	2	36

SCHOOLS' SECTION

Division	P	W	D	L	Pt
Division I					
St. John's "C"	18	8	2	2	42
Portsmouth "B"	18	7	1	2	40
Portsmouth "C"	18	6	2	2	39
Portsmouth "A"	9	8	1	2	37½
Portsmouth "A"	9	7	1	2	36
Division II					
St. John's "B"	18	7	2	2	41½
Portsmouth "B"	18	6	2	2	39
Portsmouth "C"	18	5	2	2	38
Portsmouth "A"	9	8	1	2	37½
Portsmouth "C"	9	7	1	2	36
Division III					
St. John's "A"	18	7	2	2	41½
Portsmouth "B"	18	6	2	2	39
Portsmouth "C"	18	5	2	2	38
Portsmouth "A"	9	8	1	2	37½
Portsmouth "C"	9	7	1	2	36

HAMPSHIRE LEAGUE

It was something of an anticlimax that the Young Pompeians failed to secure the championship title by a win in Gosport, but this does not detract from their magnificent achievement in securing this competition at their last attempt. In their matches they recorded only 1½ points less to Fareham and a win against Southampton. In addition, Cusham improved their position following a useful win against Southampton, and the one remaining game is played to see whether and how far Cusham can take the first two points in the final game.

RESULTS

Young Pompeians 1, Wootton 3. (By default, Wootton unable to raise a team). Cusham 4, Southampton 1 (G. Richardson 1, J. Valler 3; R. Page 1, D. A. Rawden 3, S. C. Niles 3; H. L. Parson 1; A. D. Crossin 1; Default 3; T. Hollington 1; A. C. Barton 1). Wootton 2, Bournemouth 1 (M. Thompson 3, D. K. Bevis 3; A. Edmonds 1, E. W. Chandler 3; M. D. Thompson 3, S. H. C. Lucas 1; H. G. Dell 3; A. Pike 3; Miss G. Moore 3, J. Juby 1).
 Correction of result previously published: Salisbury 1, Young Pompeians 4 (P. M. Collins lost on time to J. S. Seane).

TABLE

Team	P	W	D	L	Pt
Young Pompeians	8	5	1	2	45½
Fareham	8	4	2	2	38
Portsmouth	8	3	2	2	35½
Cusham	8	3	2	2	35
Bournemouth	7	4	1	2	34
Southampton	6	3	1	2	25½
Salisbury	6	2	1	2	25
Wootton	6	2	0	2	25
Andover	7	1	0	2	1

PROBLEM

The Adjudicator's analysis in last week's "Endgame" study was:
 1. P — R4 P — R4 ! for 1.
 2. P — Q3, 1 P — N4 ?
 3. P — P K — R4 ?
 This week we have an interesting position arrived at in a recent game between J. H. Jones (Gosport) and D. M. Heywood (Portsmouth). Heywood (Black) is a pawn up and has the move.
 Because any other move appears to lose, he is forced to play
 R — N5+.
 White cannot afford to let his opponent's rook go home and so is obliged to play K — R2. Thereupon, we reach a draw by repetition, Black alternating between N5 and N3 and White between R2 and N1.

Chess Notes

ENTHUSIASM FOR GAME GROWING

COSHAM could manage only a draw in their final Hampshire League match against Salisbury, and with Bournemouth likely to beat Andover when the two outstanding games are adjudicated, it would now seem unlikely that our four local teams will secure the first four places as was hoped.

Nevertheless, it is a wonderful example of the growing enthusiasm for the game in Portsmouth and District that we came so near to "sweeping the board" this season.

Subject to a final result in the Bournemouth v. Andover match, the programme in this competition has now been completed and everyone seems to agree that it has been a most interesting season's play.

Result — Cosham 2½, Salisbury 2½, G. Richardson 0, W. R. Bale 1; R. L. Paige 1, W. W. Watson 0; A. D. Crossin 1, J. D. Herring 0; T. E. Hollington 0, A. J. Bentley 1; R. P. L. Pett ½, R. Trezear ½.

	P	W	D	G	P
Young Pompeians	8	6	1	29	6½
Fareham	8	6	0	23	6
Portsmouth	8	5	0	25½	5
Cosham	8	4	1	21½	4½
Bournemouth	7	4	0	16	4
Southampton	8	2	1	18	3½
Salisbury	8	2	1	17½	2½
Wokington	7	0	0	16½	2
Andover	7	1	0	8	1

PORTSMOUTH LEAGUE
Both Portsmouth Grammar School "A" and De Havillands "A" won their final matches in the Senior Section, but in neither case was the win sufficient to lift them off bottom place in their respective tables.

There are no further results to hand in the Schools' Section, and it is to be hoped that the school organizers will not delay the completion of their programmes too long.

SENIOR SECTION
Division I. — Community Centre 2, Portsmouth Grammar "A" 3, (B. S. Carter ½, P. M. Collins ½, A. Hayes 1, De-fault 0, De-fault 0, D. Watkins 1; S. F. Adams ½, C. Goble ½; M. James 0, I. Mansell 1).
Division II. — Cosham "B" 1, De Havillands "A" 4 (M. Leggett 0, L. Langley 1; R. P. L. Pett 0, R. Ralls 1; S. A. Lamb 0, W. Prior 1; J. Hadkinson 1, S. Shepherd 0; T. McClelland 0, M. Woods 1).

	P	W	D	G	P
Portsmouth "A"	10	7	0	27½	7
Cosham "A"	10	6	2	21	7
Fareham "A"	10	6	2	20	7
R.N.P.L.	10	3	3	26	4½
Comm Centre	10	2	1	17½	2½
Portsmouth Gramm. 'A'	10	2	0	13	2

	P	W	D	G	P
Portsmouth "B"	10	4	0	24½	4
Gosport "A"	10	6	0	20	6
Fareham "B"	10	6	0	29½	6
St John's "A"	10	5	0	25½	5
Cosham "B"	10	2	0	15½	2
De Havilland "A"	10	2	0	14	2

	P	W	D	G	P
Fareham "C"	10	8	2	35	9
St John's "B"	10	7	0	22	7
Portsmouth "C"	10	4	3	26	5½
De Havilland "B"	10	4	1	22½	4½
Gosport "B"	9	2	2	19	2
Cyanamid "B"	9	0	0	10½	0

In the Individual Tournament, last round results received to date are:— Jones 0, Paige 1; Price 0, Evans 1; Smith (J.) 0, Heywood 1.

COUNTY POSTAL CHESS
According to the bulletin circulated by the General Conductor of the County and District Correspondence Chess Championship Tournament, on May 1, Hampshire's two teams were running equal 9th/11th (out of 16 teams) in Division I and equal 18th/20th (out of 27 teams) in Division II.

Gloucester are at present leading in Division I with Middlesex struggling at the bottom of the table. In Division II, Northants are in the lead. Further Hampshire results that have been sent in are:—

Hants I. — Cmdr. A. J. Peters lost to W. C. Evans (Yorks 1); E. W. Chandler drew with A. F. Behmer (Middlesex); S. H. C. Lucas lost to C. H. Watson (Sussex). (Total to date — six points from 13 games completed).

Hants II. — P. M. Hodgson drew with R. Combes (Linca); R. Tyack lost to Dr. E. L. Lombay (Kent); R. L. Paige won against J. F. O'Connor

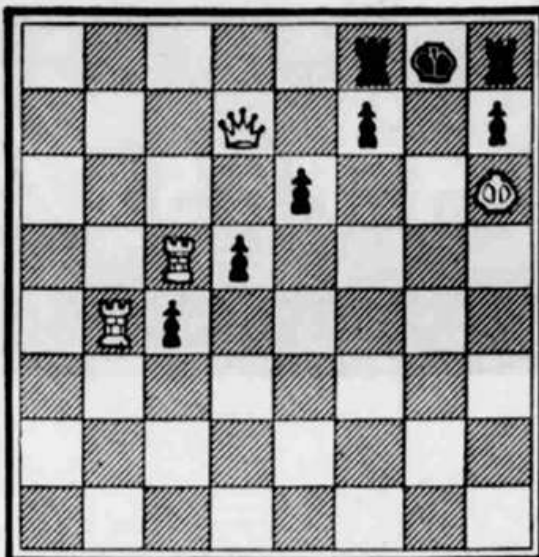
(Warwicks); E. J. Canty won against G. F. Hale (Wills); R. Ralls lost to R. L. Brooks (Cumb. and Westmorland). (Total to date — 6½ points from 16 games completed).

PROBLEM

This week we have the last of the problems submitted by Mr. W. E. Caine of Southsea. Key move next week.

Problem by W. E. CAINE

BLACK (8 pieces)



WHITE (4 pieces)

White to move and mate in two.



St John's College Lose County Title

ST John's College have lost their title of under-15 champions of Hampshire, and the Spedan-Lewis Trophy has this year gone to King Edward VI College, Southampton.

but lost the return match at Southsea.

Full scores were:

First match: King Edward VI 2½—St John's 2½ (M. Bauchop 1, A. Lakin 0; A. Newman 0, M. Rice 1; R. Wright 0, C. Leake 1; K. Evans 1, B. O'Brien 0; R. Hirschfeld ½, K. Taylor ½).

Second match: St John's College 1, King Edward VI 4 (A. Lakin 0, M. Bauchop 1; M. Rice 0, A. Newman 1; C. Leake 0, R. Wright

1; L. Galloway 1, K. Evans 0; K. Taylor 0, R. Hirschfeld 1).

FRIENDLY MATCH

Vosper Sports and Social Club's new Chess Section were completely overwhelmed by De Havillands in a friendly match and could only manage half a point from eight boards. Nothing daunted, an immediate challenge was issued for a return match to be played at De Havilland's Clubroom.

Details: Vosper ½, De Havillands 7½ (J. Grant ½, B. Smith ½; C. Brading 0, L. Langley 1; A. Pullan 0, R. Ralls 1; R. Hughes 0, M. Woods 1; H. Goldsmith 0, W. Prior 1; A. Palmer 0, S. Harris 1; L. G. Ancell 0, R. Feasey 1; A. Lynton 0, D. Walker 1).

COUNTY POSTAL CHESS

According to the latest bulletin received from the conductor of the County and District Correspondence Chess Championship, Hampshire's first team is now in equal 7th/8th place in Division I with seven points from 18 games. This being our first season in the top division, our performance can be considered very satisfactory.

Hampshire's second team are not doing quite so well and now lie in 19th place with 6½ points from 16 games.

Famous Hampshire Chess Players

by W. W. Rose (Cosham)

No. 1: H. E. BIRD

Henry Edward Bird was born at Portsmouth and learned chess at the age of ten. At 16 he was a regular visitor at the Divan in the Strand, London, where the strongest players in England, as well as foreign masters, used to congregate.

Bird played anybody at level terms or at odds, and from 1847 was regarded as a master player. He took part in the first international tournament ever held in England (London, 1851). This was a knock-out tourney and Bird was knocked out in the first round, 4-2½, by Horwitz.

Bird played many matches including a drawn match with Falkbeer in 1857 and ten years later he played an evenly contested match with the world champion Steinitz. Result: Steinitz 7—Bird 6, with 6 drawn games.

Bird was a very quick player, his style was brilliant, and he gained the reputation for originality, waywardness and eccentricity.

Being reluctant to draw games, he was seldom among the prize-winners in the many international masters' tournaments in which he competed, but often defeated the strongest players in individual games.

In 1896 he lost 9-4 in a match against Lasker who is considered by many to have been the greatest chess player the world has ever known.

Bird's best results were: Hereford, 1885 2nd and 3rd (11 players); London, 1889, 2nd and 3rd (16 players); London, 1889, 1st (11 players).

He popularized an opening which now bears his name (Bird's Opening), and contributed to chess literature by writing six books. He died in 1908.



Fareham Man Tops the Grading List

W. H. PRATTEN (4a), of Fareham Chess Club, heads the 1961 Hampshire Grading List that has recently been published and in which 190 players are rated.

Other local players in the list (down to 9b) are:—

5a, Dr. A. J. Pointon (Portsmouth).
 9b, P. T. Cartmell (Fareham), G. L. Comben (Portsmouth), T. de Buriatte (Fareham), N. C. Taylor (Fareham) and C. F. Way (Cosham).

6b, M. J. Dymond (Portsmouth), R. L. Paige (Cosham), Cmdr. A. J. Peters (Hayling Island) and Dr. B. G. Wells (Portsmouth).

7a, A. F. Brameld (R.N.P.L.) and G. Richardson (Cosham).

7b, Lieut. B. K. Butler (Portsmouth), B. S. Carter (Comm. Ctr.), A. Hayes (Comm. Ctr.), W. Makar (Portsmouth), W. C. Martin (Fareham), S. C. Noke (Cosham).

8a, R. Carter (Comm. Ctr.), A. D. Crossin (Cosham), W. J. Eaton (R.N.P.L.), J. H. Jones (Gosport), A. S. La Lond (Fareham), R. I. Reas (Comm. Ctr.), E. Taylor (R.N.P.L.) and L. West (Comm. Ctr.).

8b, P. M. Collins (Ports. Grammar), A. J. Evans (Fareham), J. E. C. Grant (Fareham), T. E. Hollington (Cosham), M. March (Portsmouth), J. P. Price (Portsmouth) and J. F. Watson (Ports. Grammar).

9a, H. C. Bailey (Portsmouth), G. W. S. Goggin (Fareham), D. M. Heywood (Portsmouth) and F. Johnson (Fareham).

9b, S. F. Adams (Comm. Ctr.), C. J. Campion (Portsmouth), P. J. Colson (R.N.P.L.), R. W. Davis (Comm. Ctr.), A. F. Garner (Fareham), E. G. Potter (Fareham), H. W. Tripp (R.N.P.L.), and R. J. Tyack (Fareham).

The annual meeting of the Hampshire Chess Association is being held at Prospect House, Above Bar, Southampton, on Saturday, July 1 (3 p.m.).

A number of important matters are coming up for discussion and it is hoped that the meeting will be well attended by players from Portsmouth and district.

PORTSMOUTH LEAGUE

The final scores and placings in the 1960/61 Individual Championship Tournament of the Portsmouth and District Chess League were as follows:—

1 (with 6½ pt.), Dr. A. J. Pointon (Portsmouth); equal 2 (with 6 pt.), Dr. B. G. Wells (Portsmouth) and G. Richardson (Cosham); equal 4 (with 5½ pt.), R. L. Paige (Cosham), M. March (Portsmouth), and P. M. Collins (Ports. Grammar); equal 7 (5 pt.) J. H. Jones (Gosport) and A. J. Evans (Fareham); equal 9 (4½ pt.) J. F. Watson (Ports. Grammar), T. E. Hollington (Cosham) and A. F. Brameld (Gosport); equal 12 (3½ pt.), J. P. Price (Portsmouth), S. F. Adams (Comm. Ctr.), A. D. Crossin (Cosham), D. A. Blossom

(Fareham), H. C. Smith (Cosham) and D. M. Heywood (Portsmouth); equal 14 (3 pt.), J. E. Smith (Portsmouth) and J. E. C. Grant (Fareham); 20 (2½ pt.), G. W. Farmer (Fareham); equal 21 (2 pt.), H. R. Moir (Fareham) and A. S. La Lond (Fareham); 23 (1 pt.), V. Lee (unattached).

FRIENDLY MATCH

The result of the return match between De Havilland Sports Club and Vosper Sports and Social Club was a win by the ship builders by 5 games to 3.

Detailed scores (De Havilland first named):—B. Smith 0, J. Grant 1; L. Langley 0, A. Pullan 1; S. Harris 0, C. Brading 1; R. Rails 1, S. Jenkins 0; R. Feasey 0, A. Lynton 1; D. Walker 0, H. Goldsmith 1; R. Richards 1, A. Palmer 0; B. Davies 1, H. Cole.

Vosper thus avenged their previous ½-7½ defeat.

Famous Hampshire Chess Players

BY W. W. ROSE (Cosham)

NO. 1 J. H. BLAKE

Joseph Henry Blake was born at Farnborough in 1859. The family moved shortly afterwards to Southampton, where he lived until 1905. He died in 1951 in his 91th year.

He learned chess at the age of 16 by quickly mastering the principles from Staunton's "Handbook"—not an easy way of learning chess, judging by 20th Century methods of teaching. Within a year or two from beginning his chess studies, he was regarded as one of the strongest players of the Southampton Chess Club, to which he then belonged and with which he was associated for many years.

He played in his first tournament outside club chess in 1881, tying for first and second prizes in the second class section of the Leamington Chess Congress of the Counties Chess Association. He competed annually in these congresses until they were abandoned in 1893.

Playing in the highest class, his best successes were at Stamford 1887 when he won from Fird, Thorold, Loeck, Mills and MacDonald and in 1892, when he won the Association's Trophy outright.

In the Southern Counties Tournament at Salisbury 1896 he tied first and second with Ward, and at Folkestone 1901 (Kent C.C.A.) he tied first and second with Atkins.

He first competed in the British Championship in 1907 finishing fifth. Competing regularly in this Tournament thereafter with varying success, he tied with Atkins for championship honours in 1909 but he never succeeded in winning the championship outright.

In the early years of the century, he lived at Surbiton and was therefore able to compete frequently in London tournaments and matches.

He won the Championship of the City of London and played top board for the Metropolitan Chess Club. He also competed in the annual Anglo-American Cable matches.

He never forsook Hampshire and played top board for the County throughout his career.

His greatest tournament success was probably Weston-Super-Mare 1922. He won the tournament outright ahead of the International Masters—Maroczy, Kostich and Yates. The same year he won the British Correspondence Chess Championship.



INDIVIDUAL CHAMPION MAKES QUITE CERTAIN

DR. A. J. POINTON (of Portsmouth Chess Club) is the new Individual Champion of Portsmouth and District.

He beat P. M. Collins in the final round to make quite certain of being at least half a point ahead of his nearest challenger.

The runner-up has not been decided; G. Richardson (Cosham) finishes with six points, but Dr. B. G. Wells (Portsmouth), the 1959-60 Individual Champion, has five points with one game still to play.

FRIENDLY MATCHES

In a recent friendly match on nine boards between A.S.W.E., Portsmouth and De Havilland, the

result was a narrow win by the Admiralty Establishment by five games to four.

The reason for the name of Roberts (A.S.W.E.) appearing twice in the detailed scores set out below is that he played two opponents simultaneously.

A.S.W.E. 5, De Havilland 4; (A. J. Evans 1, L. Langley 0; Carter 1, M. Wood 0; Ross 1, S. Harris 0; G. D. Ratter 0, S. Shepherd 1; T. H. Bayliss 0, R. Moody 1; Knight 0, R. Feasey 1; Davis 1, D. Walker 0; Roberts 1, B. Davies 0; Roberts 0; R. Balls 1).

This week, De Havilland are due to visit Vosper Sports and Social Club for a match on 12 boards.

SOUTHAMPTON LEAGUE

Our friends at Southampton have now completed a successful and extremely active season, with no fewer than 64 teams arranged in eight divisions. We in Portsmouth and District cannot rest content until we at least equal this entry.

Bramtoco had their best season to date, winning the Southampton League Championship, the Robertson Cup and the Southampton Lightning Team Tournament.

The leading team in Division II was King Alfred's, while King Edward VI School won Division I, II and III in the Schools' Section.

CHESS NOTES

In previous years, this column has closed down during the summer months. This year it is hoped to continue with fortnightly publications.

The next set of "Chess Notes" will therefore appear on Wednesday, June 14.

We have run out of material for diagrams for the time being. On the other hand, in the next publication will appear the first of the several brief articles on "Famous Hampshire Chess Players" prepared by Mr. W. A. Rose of Cosham. No. 1 will be on H. E. Bird (died 1908).

Mr. Rose has devoted a considerable amount of time and research in obtaining his facts and wishes to acknowledge in advance the sources of much of his information. These are:

(a) 1, P.-KB4 (A Guide to Bird's opening) by R. E. Robinson, printed by Daily Post Printers Liverpool.

(b) The Year Book(s) of Chess 1907-1910.

(c) The British Chess Magazine.

Chess Notes

Championship Has a Record Entry

THE new season was set in motion by the customary general meeting of the Portsmouth and District League, and the teams taking part in the Senior Section are as follows:—

Division I. — Portsmouth "A", Cosham "A", Fareham "A", R.N.P.L., Community Centre, Portsmouth "B".

Division II. — Gosport "A", Fareham "B", St John's "A", Cosham "B", Vosper.

Division III. — De Havilland, St John's "B", Portsmouth "C", Gosport "B".

Officers elected for the coming season were. — President, C. F. Way; Vice-President, J. P. Price; Hon. Secretary, J. E. C. Grant; Hon. Treasurer, J. E. C. Grant. Hon. Adjudicator, W. H.

Pratten; Senior Match Captain, T. E. Hollington; Junior Match Captain, P. M. Collins.

The total entry of 28 for the local individual championship constitutes yet another record, and is made up of eight from Portsmouth Chess Club, seven from Fareham, seven from Cosham, three from Community Centre, two from R.N.P.L. and one unattached.

COUNTY CHESS

It rather looks as if there will also be a record entry for the next Hampshire Individual Championship, and the large local entry is noteworthy.

Further names since the previous publication are. — A. M. Edmonds (Woolston), P. L. Marshall (Southampton), T. J. de Buriatte (Fareham), A. Hocking (Southampton University), S. L. Russell (Broughton), D. K. Bevis (Bournemouth), M. J. Dymond (Portsmouth), P. M. Collins (Portsmouth), W. J. E. Yorles (Gosport), B. D. Harding (Southampton University), and R. L. Paige (Cosham).

Hampshire's full fixture list for the coming season is. — October 21 v. Surrey (50 Boards) probably at Southampton; November 18 v. Berkshire (20 Boards) at Winchester; December 9 v. Kent (50 Boards) at London; January 13 v. Sussex (50 Boards) at Bognor; February 3 v. Oxfordshire (20 Boards) at Winchester; February 17 v. Buckingham (50 Boards) at London.

INTER-LEAGUE MATCHES

This year's senior match between the Portsmouth League and the Southampton League will be held at Taunton's School, Southampton on November 11 and will be on 30 boards.

The junior match, between representatives from schools in the two areas, will be held on the previous Saturday at Portsmouth Guildhall. This will also be on 30 boards.

WEEKLY COLUMN

Now that competitive play is about to commence, "Chess Notes" will appear weekly until further notice. It is also hoped to restart the weekly diagram in the near future but there is a shortage of original material. Any reader who has something of interest is asked to send it to the Editor for publication.

Chess Notes

ST JOHN'S COLLEGE SCHOOL CHAMPIONS

ST JOHN'S COLLEGE are the 1960/61 school champions of the Portsmouth and District League. This was decided somewhat belatedly at a recent League Meeting, at which the difficulty over the outstanding match Prices "A" v. St John's "C" was finally resolved by awarding a win to St John's by 2½ games to 1½.

The final Table in Section "A" of Division I of the Schools' Section is therefore as under:—

	P	W	D	G	P
St John's "C"	8	7	1	28	7½
Prices "A"	8	6	1	26	6½
Pma Grammar "B"	8	4	0	21½	4
Gosport Grammar "A"	8	1	0	12½	1
Purbrook "A"	8	1	0	11	1

There are four new teams taking part in the Schools competition just commencing, and it has become necessary to divide the "Under-15" Division into two sections. The line-up of teams is as follows:—

Division I (Over-15)

Section "A"

St John's "C"
Prices "A"
Purbrook "A"
Southern Grammar
Gosport Grammar "A"

Section "B"

St John's "D"
Purbrook "B"
Gosport Grammar "B"
Technical High "A"
Hilsea Mod. "A"

Division II (Under-15)

Section "A"

St John's "E"
Portsmouth Grammar "A"
Technical High "B"
Portchester Mod.
Hilsea Mod. "B"

Section "B"

St John's "F"
Portsmouth Grammar "B"
Gosport Grammar "C"
Paulsgrove Mod.
Purbrook "C"
Prices "B"

There will be a play-off between the eventual Section leaders in Division I for the Schools Championship, and also in Division II for the right to enter the final for the "Spedan-Lewis" Trophy.

COUNTY CHESS

The match against Surrey on 21st October will be played at Tauntons School, Southampton, and local players will be well represented.

In the County Individual Championship Tournament the final entry numbered 30, which is very nearly double the previous best.

Names not previously published are as follows: H. K. Burkert (Eastleigh), H. M. Ewans (Farnborough), D. J. Groves (Southampton), C. H. Henshaw

(Basingstoke), J. H. Jones (Gosport), K. J. Kirkham (Winchester), W. Makar (Portsmouth), W. H. Pratten (Fareham), M. Thompson (Southampton), L. West (Portsmouth Community Centre), C. Mansfield (Bournemouth), and G. Knott (Bournemouth).

CONGRESSES

R. L. (Roger) Paige, of Cosham Chess Club, seems to have a tremendous appetite for Congress play.

Having taken part in the Northern "Open" at Whitby from 31st July to 11th August (where he obtained 4½ points), he moved straight on to Aberystwyth to compete in the British Boys "Under-18" Championship (14th—18th August). Here he obtained 6 points, but still thirsting for some further serious Chess, he moved to the Eastbourne Open Championship, where he collected 4½ points between 28th August and 8th September.

This is one way of spending a school holiday—most Chess players would agree that it is a very good way.



Record Entry For Schools' Tourney

THE National Schools Chess Tournament has this year attracted a record entry of 18 teams from 15 schools in Hampshire, Isle of Wight and Sussex.

As previously, the competition will be on a knock-out basis, and there will be a handicapping system based on the ages of the players concerned.

All our local teams receive a bye in Round 1, but Round 2 contains the following pairings:

Bembridge School, I.W. (1st team) v. St John's, Southsea (1st team).

Ichen Grammar, Southampton v. Portsmouth Grammar School.

East Grinstead Grammar v. Price's School, Fareham.

St John's, Southsea (2nd team) v. Taunton's School, Southampton.

Round 2 has to be completed by November 18.

PORTSMOUTH LEAGUE

There has been a very welcome late entry into the Senior Section of the Portsmouth and District League, which has made the number of teams in Division III up to five and given a much better balanced distribution.

This team has come from Portsmouth College of Technology and is led by J. H. Gardener.

Meanwhile, the first two results of the season have come in. Fareham "A" (with their strongest available team in play) lost heavily to Cosham "A", which most surely indicate that the Cosham Club have their eye on the Championship this year.

Portsmouth Chess Club, with their strength divided between two teams in the First Division, did well to have their "B" team beat Community Centre (strengthened by the allegiance of A. S. La Lond) by a decisive margin.

DETAILED SCORES

SENIOR SECTION (DIVISION D)

Cosham "A" 3½, Fareham "A" 1½ (C. F. Way 0, W. H. Pratten 1; R. L. Paige 1, T. J. De Burcaite 0; Richardson ½, N. C. Taylor ½; S. C. Noke, I. F. Johnson 0; A. D. Crossan 1, R. J. Tyack 0).

Portsmouth "B" 3½, Community Centre 1½ (M. J. Dymond ½, B. S. Carter ½; P. M. Collins 1, A. Hayes 0; M. March 0, A. S. La Lond 1; C. J. Campion 1, L. West 0; H. C. Bailey 1, R. I. Ross 0).

National Club Championship

Always eager to pioneer new fields, the Young Pompeians (reigning Hampshire League Champions) have entered a team in the National Club Championship.

This competition is of course, very much stronger than anything found locally and the Y.P.'s do not expect to get very far before being knocked out. Their main object is to gain experience.

However, one never knows, and all local players will wish them luck in their latest venture.

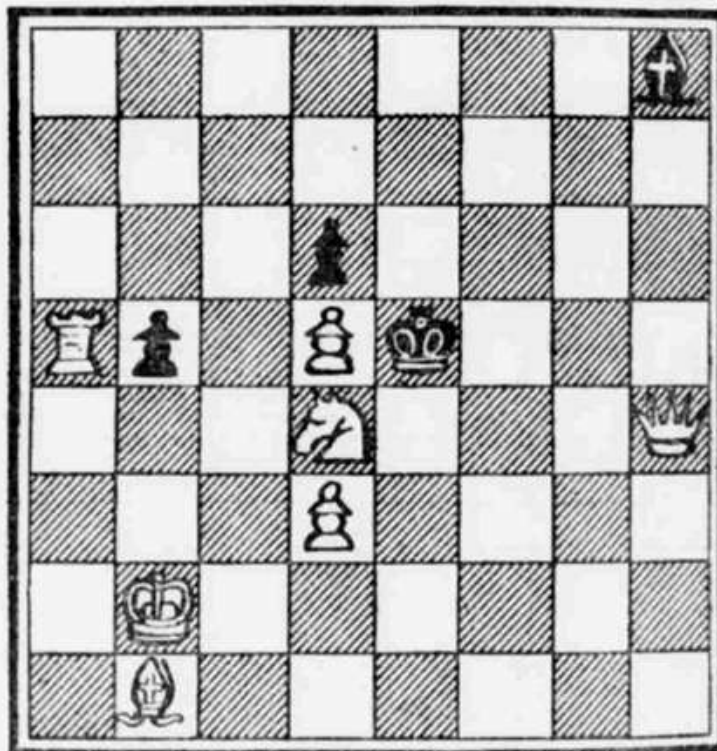
Teams (of six) will be drawn from the following players: M. J. Dymond, R. L. Paige, P. M. Collins, A. F. Brameld, M. M. March, C. J. Campion, J. F. Watton and J. H. Jones.

DIAGRAM

This week we publish an original problem by Mr. C. F. Way, of Cosham Chess Club (who, incidentally, has recently presented to his club a handsome trophy for the club championship).

By C. F. Way (Cosham).

BLACK



WHITE

Chess Notes

Portsmouth Have a Formidable Team

THE first matches in the Hampshire League tournament have been completed. Portsmouth, who can field a truly formidable team now that A. J. Peters has joined them, inflicted heavy punishment on Cosham, while Fareham rather unexpectedly lost to Andover.

This looks like being an interesting contest and Portsmouth are quite capable of capturing the trophy.

Results. — Salisbury 1½, Bournemouth 3½. (F. S. Scanes 0, D. K. Bevis 1; W. W. Watson 0, E. W. Chandler 1; J. D. Herring 0, A. White 1; R. R. Tregear ½, G. Knott ½; A. J. Bentley 1, S. H. C. Lucas 0). Andover 3, Fareham 2. (C. H. Henshaw 1, T. J. De Buriatte 0; S. L. Russell 1, N. C. Taylor 0; J. M. Jarvis 1, Cmdr. P. Willcocks 0; A. J. Haddrell 0, A. J. Evans 1; G. D. Young 0, R. J. Tyack 1). Cosham 1, Portsmouth 4. (R. L. Paige 0, Dr. A. J. Pointon 1; G. Richardson 0, Cmdr. A. J. Peters 1; A. D. Crossin 1, Dr. B. G. Wells 0; T. E. Hollington 0, J. F. Watson 1; H. C. Smith 0, W. Makar 1).

PORTSMOUTH LEAGUE

Purbrook Park gave Prices School a shock in the Schools Section of the Portsmouth and District League. From all accounts, they should have drawn the match in the top division, which indicates that they gained some useful experience from last year's competitive play.

In the Under-15 Section, Purbrook beat Prices by the odd game.

There have been results in all three Division of the Senior Section during the week. Portsmouth Chess Club do not appear to be much weakened by having to divide their strength between two teams in Division I. Following last week's win by their "B" team, the "A" team has now beaten R.N.P.L., which is stronger than last year now that the ex-Kent player, W. J. E. Yeeles, has joined them.

Fareham "B" started their programme with a win against St John's, but the College "B" team had no difficulty in disposing of De Havilland, who were, in any case, one short.

Results. —

SENIOR SECTION

Division I. — R.N.P.L. 2, Ports-

mouth "A" 3. (A. F. Brameld ½, Dr. B. G. Wells ½; W. J. E. Yeeles ½, Dr. A. J. Pointon ½; W. J. Eaton 0, J. P. Price 1; E. Taylor 0, W. Makar 1; J. H. Jones 1, R. Prince 0).

Division II. — St John's "A" 1½, Fareham "B" 3½. (P. Pemberton-James 0, D. A. Bloxson 1; C. Thomas 0, B. A. Keen 1; A. Clark 1, M. Gibson 0; C. Moore ½, G. Houghton ½; P. Miller 0, W. Davies 1).

difficulty in disposing of De Havilland, St John's "B" 4. (B. Smith 0, A. Lakin 1; L. Langley 0, M. Rice 1; R. Ralls 1, R. Shaw-Brown 0; M. Woods 0, C. Leake 1; Default 0, L. Allaway 1).

SCHOOLS SECTION

Division I (Section "A"). — Prices "A" 3, Purbrook "A" 2. (H. Curtis 1, S. Rook 0; R. J. Tyack ½, A. Leadbetter ½; B. A. Keen 1, K. Firth 0; C. Gay ½, A. Renouf ½; I. Crawford 0, N. Walker 1).

Division II (Section "B"). — Prices "B" 2, Purbrook "C" 3. (C. Mason 0, D. Nicholson 1; N. Davies 0, P. Druce 1; J. Parisot 1, S. Pritchard 0; C. Jones 1, R. Lintott 0; P. Przybycin 0, T. Pickles 1).

SCHOOLS CHAMPIONSHIP

It has already been reported that St John's "C" are the 1960/61 School Champions. What was omitted from the previous report was the fact that there had to be the preliminary formality of a play-off between the leaders of Section "A" of Division I in the Schools League (St John's "C") and the leaders of Section "B" (St John's "D").

This match was played some weeks ago and the result was St John's "C" 3, St John's "D" 2. (P. Pemberton-James 1, A. Clark 0; D. Peniston-Bird 0, C. Moore 1; C. Thomas 0, A. Lakin 1; K. Harrison 1, P. Miller 0; M. Rice 1, B. Davis 0).

PROBLEM

The key move in last week's problem by Mr. C. F. Way was 1. NxP. Then if 1. KxP(ch). 2. N-Q4 mate; if 1. K-B4(ch). 2. P-Q4 mate; if 1. B-B3. 2. Q-K4 mate; if 1. B-N7. 2. Q-N5 mate.

Portsmouth Teams Are Still Unbeaten

ALL teams in the Senior Section of the Portsmouth League have now played at least one match and although it is too early to make confident predictions, there are one or two interesting pointers as to current form.

Fareham "A" have started disastrously with two losses whereas both Portsmouth teams are unbeaten in Division I.

The newcomers to the Third Division (College of Technology) lost heavily, but their results will improve as they gain experience of competitive match play.

RESULTS

SENIOR SECTION

Division I. — Fareham "A" 2, Portsmouth "B" 3. (W. H. Pratten 1, M. J. Dymond 0; T. J. De Buriatte 1, P. M. Collins 1; A. J. Evans 0, M. P. Cook 1; R. J. Tyack 1, M. March 0; F. Johnson 0, H. C. Bailey 1).

Division II. — Cosham "B" 1½, St John's "A" 3½. (T. E. Hollington 1, P. Pemberton-James 0; H. C. Smith 1, C. Thomas 1; M. Leggett 0, A. Clark 1; M. R. Barnett ½, P. Miller ½; J. Hodgkinson 0, A. Lakin 1).

Division III. — Gosport "B" 1, Portsmouth "C" 4. (R. G. Clarke ½, I. E. Smith ½; J. Stratton ½, A. Bacon ½; C. R. Langridge 0, E. J. Cauty 1; R. Seymour 0, B. J. Press 1; Mrs. L. Clear 0, B. H. Wells 1).

College of Technology 1, De Havillands 4. (M. Chadwick ½, B. Smith 2; B. Hill 0, M. Woods 1; J. Gardner 0, R. Ralls 1; K. Munro 0, J. Walker 1; M. Hughes ½, R. Richards ½).



TABLES SENIOR SECTION DIVISION I

	P	W	D	G	P
Portsmouth "B"	2	2	0	6½	2
Cosham "A"	1	1	0	3½	1
Portsmouth "A"	1	1	0	3	1
R.N.P.L.	1	0	0	2	0
Fareham "A"	2	0	0	3½	0
Comm. Centre	1	0	0	1½	0

DIVISION II

	P	W	D	G	P
Fareham "B"	1	1	0	3½	1
Gosport "A"	1	1	0	3	1
St John's "A"	2	1	0	5	1
Vesper	1	0	0	2	0
Cosham "B"	1	0	0	1½	0

DIVISION III

	P	W	D	G	P
Portsmouth "C"	1	1	0	4	1
St John's "B"	1	1	0	4	1
De Havilland	2	1	0	5	1
Gosport "B"	1	0	0	1	0
College of Tech.	1	0	0	1	0

INTER-LEAGUE MATCH

The Senior Inter-League Match on 30 boards between a representative side from local clubs and one drawing on clubs in the Southampton area will be played at Tauntons School, Highfield, Southampton on Saturday, November 11 commencing 3 p.m.

The team representing Portsmouth and District League is as follows:—

- Board 1. W. J. E. Yeeles (R.N.P.L.), Bd 2. Dr. A. J. Pointon (Portsmouth), Bd 3. Cmdr. A. J. Peters (Portsmouth), Bd 4. R. L. Paige (Cosham), Bd 5. T. J. De Buriatte (Fareham), Bd 6. N. C. Taylor (Fareham), Bd 7. P. J. Cartmell (unattached), Bd 8. M. J. Dymond (Portsmouth), Bd 9. A. F. Brameid (R.N.P.L.), Bd 10. Dr. B. G. Wells (Portsmouth), Bd 11. P. M. Collins (Portsmouth), Bd 12. G. Richardson (Cosham), Bd 13. M. J. Cook (Portsmouth), Bd 14. B. S. Carter (Comm. Centre), Bd 15. A. Hayes (Comm. Centre), Bd 16. J. H. Jones (R.N.P.L.), Bd 17. A. D. Crossin (Cosham), Bd 18. R. Carter (Comm. Centre), Bd 19. A. S. La Lond (Comm. Centre), Bd 20. W. J. Eaton (R.N.P.L.), Bd 21. M. March (Portsmouth), Bd 22. L. West (Comm. Centre), Bd 23. J. P. Price (Portsmouth), Bd 24. A. J. Evans (Fareham), Bd 25. A. F. Garner (Fareham), Bd 26. S. F. Adams (Comm. Centre), Bd 27. D. M. Heywood (Portsmouth), Bd 28. R.

J. Tyack (Fareham), Bd 29. Dr. J. Hardcastle (Gosport), Bd 30. R. D. Clark (Gosport).

Those players travelling by train are advised to catch a Swaything or Bassett Green Bus (No. 15 or 15a) from the Avenue. Anyone who is unable to play, please contact the League Secretary or League Match Captain without delay.

Having won this keenly contested match last year, we must avoid at all costs giving away any points by default.

COUNTY POSTAL CHESS

The lists of players representing Hampshire in the 1962 County and District Correspondence Chess Championship have now been submitted, and local players appearing therein are as under:—

HAMPSHIRE I

Board 1. W. H. Pratten (Fareham), Bd 4. Dr. A. J. Pointon (Portsmouth), Bd 6. Cmdr. A. J. Peters (Portsmouth), Bd 10. M. J. Dymond (Portsmouth), Bd 12. Dr. B. G. Wells (Portsmouth), Bd 15. A. S. La Lond (Comm. Centre), Bd 21. J. P. Price (Portsmouth), Bd 22. A. F. Brameid (R.N.P.L.), Bd 23. W. Makar (Portsmouth), Bd 24. S. C. Noke (Cosham), Bd 25. A. J. Evans (Fareham), Bd 26. D. M. Heywood (Portsmouth), Bd 27. L. West (Comm. Centre), Bd 28. W. J. Eaton (R.N.P.L.), Bd 29. G. W. Farmer (Fareham).

HAMPSHIRE II

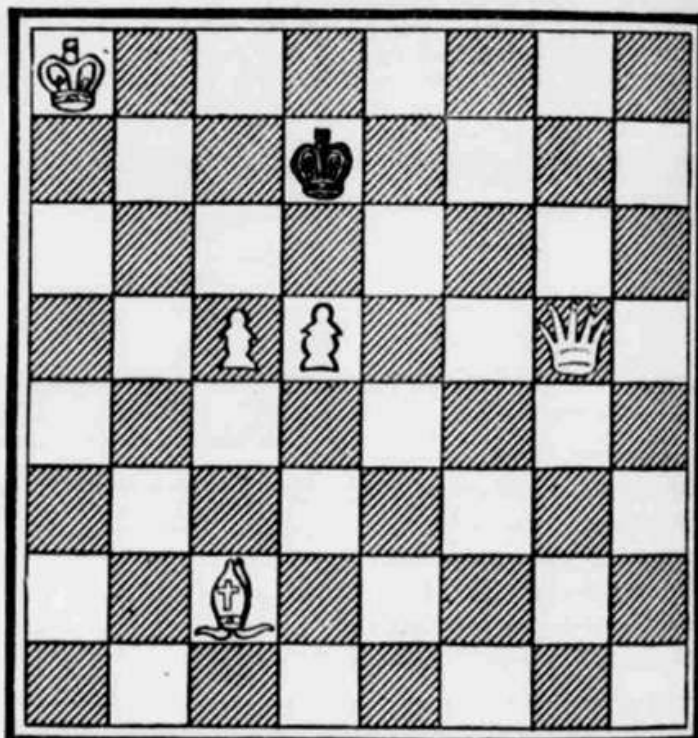
Board 3. C. G. S. Goggin (Fareham), Bd 4. A. F. Garner (Fareham), Bd 5. A. D. Crossin (Cosham), Bd 6. T. E. Hollington (Cosham), Bd 8. R. J. Tyack (Fareham), Bd 11. E. G. Poster (Fareham), Bd 12. J. H. Jones (R.N.P.L.), Bd 14. A. R. Cooper (Southsea), Bd 16. H. R. Moir (Fareham), Bd 17. J. E. Smith (Portsmouth), Bd 18. C. W. Brading (Fareham), Bd 19. B. A. Keen (Fareham), Bd 22. M. G. Leggett (Cosham), Bd 25. D. A. Blossom (Fareham), Bd 28. E. J. Cauty (Portsmouth), Bd 29. W. W. Rose (Cosham).

PROBLEM

This week we publish a somewhat ancient "miniature" problem. For the technically-minded, this is known as the "Star-Flight Theme." Solution next week.

By A. G. CORRIAS
(Good Companion Folder, 1917)

BLACK



WHITE

White to move and mate in two.

Chess Notes

Great Recovery by Portsmouth Schools

AFTER a bad start, and from being at one time 1-6 down, Portsmouth and District School boys fought back magnificently to win the 30-board Junior Inter-League match against Southampton Schools by 17½ games to 12½.

St John's College were again the main source of players and their contingent of 14 together collected nine points.

Individual scores (Portsmouth names first) were—

Abbreviations.—PG represents Portsmouth Grammar; SG, Southern Grammar; NG, Northern Grammar; SJ, St John's College; PORT, Portchester Mdn.; PP, Purbrook Park; TH, Technical High; PAULS, Paulsgrove Modern; GG, Gosport Grammar.
 R. L. Paige (NG) 1, M. G. Ford 0; P. M. Collins (PG) 1, D. Saunders 0; A. F. Brameld (GG) 1, R. Randall 0; M. March (SG) ½, H. Thornton ½; P. Pemberton-James (SJ) 1, M. Jupe 0; A. Clark (SJ) 1, P. Hore 0; A. Lakin (SJ) 1, D. Kahn (O) 0; C. Thomas (SJ) 0, J. Patience 1; I. Mansell (PG) 1, P. P. Jenkins 0; A. Leadbeater (PP) 0, C. Bulbrooke 1; P. Miller (SJ) 1, D. Dry 0; R. Woods (SG) 0, J. Dunford 1; M. Woods (SG) 1, A. Clarke 0; M. Rice (SJ) 1, B. Williams 0; C. Leake (SJ) 0; P. Meeghan 1; D. Nicholson (PP) 0; P. Mitchell 1; R. Shaw-Brown (SJ) 0; B. O'Sullivan 1; R. Tringham (TH) 0; C. Silience 1; G. Dowdell (TH) 0; B. Hubbs 1; G. Long (PORT) 0; K. Evans 1; A. Wagg (PORT) 0; B. Banham 1; L. Galloway (SJ) 1; Carole Cooper 0; B. O'Brien (SJ) 1; C. Ford 0; J. Hawkins (SJ) ½; K. Latt ½; R. Innalls (PAULS) 1; P. Parry 0; J. Davis (SG) 1; K. Weaver 0; A. Jeffrey (PAULS) 1; R. Fenney 0; R. Slavert (SJ) 0; D. Jones 1; S. Keeley (SJ) 1; C. McSherry 0; C. Malone (SJ) ½; D. Barnett ½.

PORTSMOUTH LEAGUE

Portsmouth 'A' beat Cosham to become a close second to Portsmouth 'B' in the top Division of the Portsmouth and District League. Meanwhile Community Centre lost by the odd game to R.N.P.L.

In Division II, Gosport 'A' move into the lead following their draw against Cosham 'B'.

RESULTS.—

SENIOR SECTION

Division I.—Portsmouth 'A' 3, Cosham 'A' 2. (Dr. A. J. Pointon 0, R. L. Paige 1; Cmdr. A. J. Peters 1, G. Richardson 0; W. Makar 1, S. C. Nike 0; J. P. Price 0, A. D. Crossin 1; G. Feltham 1, T. E. Hollington 0). Community Centre 3, R.N.P.L. 3. (B. S. Carter 0, W. J. E. Yeeles 1; A. Hayes 0, A. F. Brameld 1; A. S. La Lond ½, W. J. Eaton ½; R. Carter 1, J. H. Jones 0; S. F. Adams ½, E. Taylor ½).

Division II.—Gosport 'A' 2½, Cosham 'B' 2½. (H. W. Tripp 0, T. E. Hollington 1; J. Hardcastle 0, H. C. Smith 1; A. N. Dosssett 1, M. Leggett 0; H. J. Taylor 1, J. Hodgkinson 0; R. Clark ½, M. Barnett ½).

TABLES

DIVISION I

	P	W	D	G	P
Portsmouth 'B'	2	2	0	6½	2
Portsmouth 'A'	2	2	0	6	2
Cosham 'A'	2	1	0	5½	1
R.N.P.L.	2	1	0	5	1
Fareham 'A'	2	0	0	3½	0
Community Centre	2	0	0	3½	0

DIVISION II

	P	W	D	G	P
Gosport 'A'	2	1	1	5½	1½
Fareham 'B'	1	1	0	3½	1
St John's 'A'	2	1	0	5	1
Cosham 'B'	2	0	1	4	½
Vospur	1	0	0	2	0

DIVISION III

	P	W	D	G	P
Portsmouth 'C'	1	1	0	4	1
St John's 'B'	1	1	0	4	1
De Havillands	2	1	0	5	1
Gosport 'B'	1	0	0	1	0
College of Tech.	1	0	0	1	0

CHESS JAMBOREE

The Southampton Chess League have organized an Open Chess Jamboree at Taunton's School, Southampton on Wednesday, November 22, beginning at 7.15 p.m.

Teams are of six players and there is still time for any local club which has not already entered to do so. (The application must be received by Mr. K. Robinson, of 17, Vincent Avenue, Southampton, by November 20).

In this sort of event a single game of chess is played by each player on a cross-pairing basis.

Entry fee is 1s. a head. Sets and boards are to be provided by contestants.

NATIONAL SCHOOLS TOURNAMENT

Portsmouth Grammar School are through to round three of the National Schools Tournament, beating Itchen Grammar School by a clear point—despite being one age group lower than the Southampton School.

Scores (Portsmouth Grammar School names first)—P. Collins 1, D. Saunders 0; D. Watkins ½, M. Jupe ½; I. Mansell 1, C. Bulbrooke 0; J. Mucklow 0, P. Collinge 1; C. Chapman 0, C. Silience 1; P. Hodges 1, D. McDermott 0.

COUNTY CHESS

To celebrate the 80th birthday of Sir George Thomas, who has been a member of the Hampshire Chess Association for many years, a luncheon was held in London last week, followed by a ten-board 'Jamboree' in which ten counties competed.

Hampshire's team, weakened by illness of several regular players, did surprisingly well to score 4½ against the composite team from the other counties.

W. H. Pratten won brilliantly against Kent's number one board and P. L. Marshall successfully accomplished a clever variation of the Sicilian Defence.

Full scores were—W. H. Pratten 1, Kent 0; M. W. Thompson 0, Surrey (Junior) 1; Cmdr. A. J. Peters ½, Middlesex ½; B. D. Harding 0, Oxfordshire 1; P. L. Marshall 1, Hertfordshire 0; L. E. Vine ½; Buckinghamshire ½; C. H. Henshaw ½, President's team ½; D. A. Rawden 1, Essex 0; G. W. Baverstock 0, Surrey (Senior) 1; W. Engert 0, Sussex 1.

First round results in the County Individual Championship Tournament were.—Knott 0, Bevis 1; White 0, Mansfield 1; Evans 1, Russell 0; Kirkham 1, Vine 0; Burkett 0, Henshaw ½; Jones 1, Wells 0; Hollington ½, Makar ½; De Buriatte 0, Pratten 1; Collins 0, Paige 1; Yeeles 1, West 0; Harding ½, Marshall ½; Groves 0, Thompson 1; Valler 0, Hocking 1; La Lond 0, Dymond 1. The game, Moir v. Edmonds, stands adjourned.

HASTINGS

The 37th annual Hastings International Christmas Chess Congress will be held in the Sun Lounge, St Leonards from December 27 until January 6 next year.

This famous event needs no introduction to chess players, and the Premier Tournament will have the usual number of famous internationals taking part.

Closing date for entries is December 11.

PROBLEM

The key move in last week's 'two-mover' was P-Q6. Then if K-B1, B-B3; if K-K1, Q-K7; if K-K3, Q-B5; if K-B3, B-R4. Another problem will appear next week.

Portsmouth Record a Fine Double

PORTSMOUTH LEAGUE have achieved the "double" against their old rivals, Southampton League. Following the Junior team's 17½—12½ win the previous Saturday, the Seniors have surpassed them by beating a strong team from the Southampton clubs by 20 games to ten.

It will be recalled that Portsmouth beat Southampton in this annual fixture last season for the first time in a number of years, but the Junior team was unsuccessful.

Now we can claim to be right on top with an aggregate of 27½ games to 22½.

The latest match was played at Totton's School, Southampton and the home team were responsible for announcements. Nevertheless T. E. Hollington, the League's Senior Match Captain is to be congratulated for entering such a strong team (and a big winner).

W. J. E. Yeates played top board for Portsmouth and set the pace by beating his opposite number, Marshall Thompson.

Full scores in this memorable match were (Southampton names first):

M. Thompson 0, W. J. E. Yeates (R.N.P.L.) 1; L. Vine ½, Dr. A. J. Patten (Portsmouth) ½; G. Daw 1, C. A. J. Peters (Portsmouth) 0; A. Lambert ½, R. L. Paige (Cosham) ½; F. L. Marshall ½, T. J. de Korte (Fareham) ½; A. Hocking 1, N. C. Taylor (Fareham) 0; J. G. Shepherd ½, P. D. Cartmell (unattached) ½; B. D. Harding 0, M. J. Donald (Portsmouth) 1; C. Harding 0, A. F. Brameld (R.N.P.L.) 1; G. L. Pritchard 0, Dr. B. G. Wells (Portsmouth) 1; H. L. Parsons 1, T. E. Hollington (Cosham) 0; A. C. Barton 0, M. P. Cook (Portsmouth) 1; F. R. Carter 1, R. S. Carter (Com. Centre) 0; D. Graves 0, A. Hayes (Com. Centre) 1; G. Baverstock ½, J. H. Jones (R.N.P.L.) ½; M. D. Thompson 0, A. H. Cousins (Cosham) 1; (default) 1; W. J. Easton (R.N.P.L.) 1; K. Robinson 0, M. March (Portsmouth) 1; D. Sanderson ½, L. West (Com. Centre) ½; Miss G. Moore ½, J. P. Price (Portsmouth) ½; H. G. Dell 1, J. E. C. Grant (Fareham) 0; W. Frost 0, A. J. Evans (Fareham) 1; C. J. G. Paine 0, A. F. Garner (Fareham) 1; A. Pritchard 0, S. F. Adams (Com. Centre) 1; F. Pransell ½, D. M. Heywood (Portsmouth) ½; R. Redall ½, E. Taylor (R.N.P.L.) ½; R. Thornton 0, R. J. Tyack (Fareham) 1; J. Pabence 0, D. A. Blossom (Cosham) 1; M. Jupp ½, Dr. J. Rankin (Gosport) ½; R. G. Taylor 0, R. C. Clark (Gosport) 1.

PORTSMOUTH LEAGUE

In Division I of the Senior Section, Cosham "A" were without the services of G. Richardson when they met R.N.P.L. but nevertheless managed to draw the match. There is no change resulting however in the relative positions in this table. In the other two Divisions there has been quite considerable changes in order. Vosper lost again but Gilly of Technology were successful

in their second match of the season. Tables cannot yet be published for the Schools' Section, as several teams have yet to play their first match.

SENIOR SECTION

Division I. — R.N.P.L. 2½, Cosham "A" 2½, (W. J. E. Yeates 1, C. F. Way 0; A. F. Brameld ½, R. L. Paige ½; W. J. Easton ½, A. D. Cousins ½; J. H. Jones ½, T. E. Hollington ½; E. Taylor 0, M. Leggatt 1).

Division II. — Fareham "B" 2, Cosham "B" 2, (R. J. Tyack ½, T. E. Hollington ½; D. A. Blossom ½, H. C. Smith ½; B. A. Keen 1, M. Leggatt 0; A. F. Garner 0, R. P. L. Pitt 1; G. D. Scatter 0, M. Barnett 1); St. John's "A" 4, Vosper 1, (Bro. Charles 1, J. Grant 0; P. Pemberton-James 1, C. Brading 0; A. Clark 1, R. Hughes 0; P. Miller 1, H. Goldsmith 0; M. Rice 0, A. Lynton 1).

Division III. — Portsmouth "C" 2, College of Technology 2, (J. E. Smith 1, M. Chadwick 0; E. J. Canty 0, B. Hill 1; R. J. Woods 0, J. Gardener 1; Rev. H. Miller 1, K. Munro 0; B. H. Wells 0, Miss M. Sanderson 1).

SCHOOLS' SECTION

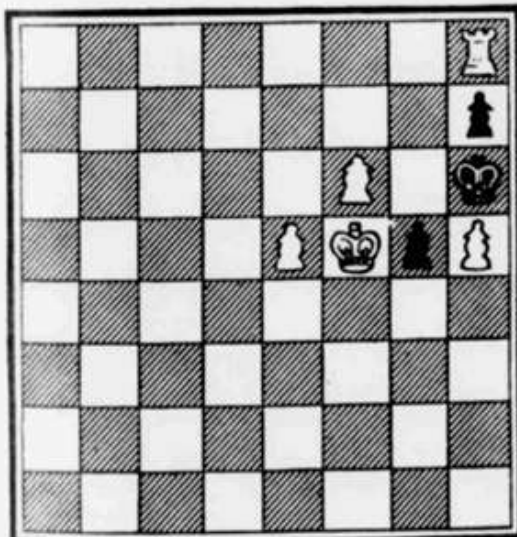
Division I — Section "A." — St John's "C" 4½, Gosport Grammar "A" 3½, (P. Pemberton-James 1, R. Jones 0; C. Thomas 1, M. Shaw 0; A. Clarke 1, R. Crowe 0; C. Moore 1, G. Williams 0; P. Miller ½, W. Rance ½); Southern Grammar 3½, Purbrook "A" 1½, (M. March 1, D. Thomas 0; M. J. Woods 1, M. Beerling 0; J. E. Davis 0, A. Renouf 1; D. F. Lea 1, G. Elliott 0); St John's "C" 3, Purbrook "A" 0, (P. Pemberton-James 1, A. Leadbetter 0; C. Thomas 1, S. Rook 0; A. Clark 1, K. Firth 0; C. Moore 1, A. Renouf 0; P. Miller 1, D. Nicholson 0).

Division I — Section "B." — St John's "D" 3, Gosport Grammar "B" 0, (D. Johnson 1, L. Stubbington 0; R. Stavert 1, S. Goldgewicht 0; K. Taylor 1, P. Wood 0; G. Howard 1; P. Plowright 0; Jones 1, D. Webb 0); St John's "D" 4, Hilsa Modern "A" 1, (A. Lakin 1, R. Dawson 0; M. Rice 1, P. Kiddy 0; R. Shaw-Brown 0, D. Baker 1; C. Leake 1, R. Adams 0; R. Stavert 1, K. Clarke 0); St John's "D" 4½, Purbrook "B" ½, (A. Lakin 1, K. Wilson 0; M. Rice 1, J. Wilson 0; C. Leake ½, P. Voss ½; R. Shaw-Brown 1, D. Ellis 0; L. Galloway 1, R. Francis 0).

Division II — Section "A." — St John's "E" 5, Hilsa Modern "B" 0, (L. Galloway 1, R. Todd 0; B. O'Brien 1, H. Rouse 0; J. Hawkins 1, A. Alpart 0; S. Keeley 1, M. Deacon 0; C. Richens 1, A. Hurdle 0).

Division II — Section "B." — St John's "F" 4, Purbrook "C" 1, (D. Johnson 1, D. Nicholson 0; R. Stavert 1; default 0; K. Taylor 1, P. Bruce 0; G. Howard 0, P. Cave 1; P. Jones 1, T. Perkins 0).

BY F. AMELUNG
(Black)



(White)

White to move and mate in two.

Hampshire Lead May Not be Sufficient

HAMPSHIRE met Berkshire in the Southern Counties Championship and the score stands 8½ to 6½ in Hampshire's favour.

At first sight, this would appear to be a winning position, but as Berkshire seem to have the advantage in several of the unfinished games, we may be led to put it to collect the necessary two points.

Six local players took part and more than held their own. W. J. Yeates played No. 1 against G. L. Tadiello and there is one of the five unfinished games.

J. G. Jones turned up to watch and found himself in the team as a substitute for a missing Hampshire player. He did well to win on board 12.

Full scores Hampshire v Berkshire: W. J. Yeates (H.P.L.) and Portsmouth v G. L. Tadiello & D. C. Boyd (Knights, Bournemouth); G. L. Tadiello & D. C. Boyd v W. J. Yeates & E. M. Chandler (Knights, Bournemouth); G. L. Tadiello & D. C. Boyd v J. G. Jones & D. J. Peters (Portsmouth) & J. G. Jones & D. J. Peters v W. J. Yeates & E. M. Chandler (Knights, Bournemouth); W. J. Yeates & E. M. Chandler v G. L. Tadiello & D. C. Boyd (Knights, Bournemouth); G. L. Tadiello & D. C. Boyd v W. J. Yeates & E. M. Chandler (Knights, Bournemouth); G. L. Tadiello & D. C. Boyd v W. J. Yeates & E. M. Chandler (Knights, Bournemouth).

NATIONAL SCHOOLS' TOURNAMENT

The St John's College first team is safely through to the third round of the National School's Tournament, but their second team have been knocked out.

The first team had to cross the water where they had no difficulty in dealing with one of comparable age grouping from Bournemouth School. The second team were two years younger on average than that of Taunton's School, Southampton, but the final score gave too wide a gap to be closed by the handicap system.

Full scores Bournemouth School v St John's first team: G. Galloway 0, Clark 1, McDonald 1, Moore 1, Cooper 0, Miller 1, Dunning 0, Lakin 1, Armsworth 0, Rice 1. St John's second team v Taunton's School 5 (Leake 0, Thornton 1, O'Brien 0, Randall 1, Galloway 0, Horro 1, Keeley 1, Dunford 0, Hopkins 0, Phillips 1, Johnson 0, Griffiths 1).

PROBLEM

The key move in last week's problem was P x P e.p., it being obvious that Black's previous move was P-B4. Black must now play K-B4, whereupon White mates with K x P.

It will be recalled that last week we published the famous "Indian" answer. This week we have a somewhat known as the "Red Indian".

PORTSMOUTH LEAGUE

As no other club has been able to beat either of Portsmouth's two first division teams, it was left for the division of the other. Other teams will be hoping that in the return matches, the "A" team defeats the "B".

It can be seen from the School's Section Tables published this week (see the first item) that St John's College is setting a hot pace in both Divisions. This year's School's Competition however seems likely to be more interesting than ever before.

RESULTS

Senior Section
 Division I—Commonwealth Centre 2, Farnham 1, St. John's 1, 2, 3, 4, 5, 6, 7, 8, 9, 10, 11, 12, 13, 14, 15, 16, 17, 18, 19, 20, 21, 22, 23, 24, 25, 26, 27, 28, 29, 30, 31, 32, 33, 34, 35, 36, 37, 38, 39, 40, 41, 42, 43, 44, 45, 46, 47, 48, 49, 50, 51, 52, 53, 54, 55, 56, 57, 58, 59, 60, 61, 62, 63, 64, 65, 66, 67, 68, 69, 70, 71, 72, 73, 74, 75, 76, 77, 78, 79, 80, 81, 82, 83, 84, 85, 86, 87, 88, 89, 90, 91, 92, 93, 94, 95, 96, 97, 98, 99, 100.

SCHOOLS SECTION
 Division I (Section "A")—Farnham Grammar "A" 1, 2, 3, 4, 5, 6, 7, 8, 9, 10, 11, 12, 13, 14, 15, 16, 17, 18, 19, 20, 21, 22, 23, 24, 25, 26, 27, 28, 29, 30, 31, 32, 33, 34, 35, 36, 37, 38, 39, 40, 41, 42, 43, 44, 45, 46, 47, 48, 49, 50, 51, 52, 53, 54, 55, 56, 57, 58, 59, 60, 61, 62, 63, 64, 65, 66, 67, 68, 69, 70, 71, 72, 73, 74, 75, 76, 77, 78, 79, 80, 81, 82, 83, 84, 85, 86, 87, 88, 89, 90, 91, 92, 93, 94, 95, 96, 97, 98, 99, 100.

Division II (Section "A")—Technical High "B" 1, 2, 3, 4, 5, 6, 7, 8, 9, 10, 11, 12, 13, 14, 15, 16, 17, 18, 19, 20, 21, 22, 23, 24, 25, 26, 27, 28, 29, 30, 31, 32, 33, 34, 35, 36, 37, 38, 39, 40, 41, 42, 43, 44, 45, 46, 47, 48, 49, 50, 51, 52, 53, 54, 55, 56, 57, 58, 59, 60, 61, 62, 63, 64, 65, 66, 67, 68, 69, 70, 71, 72, 73, 74, 75, 76, 77, 78, 79, 80, 81, 82, 83, 84, 85, 86, 87, 88, 89, 90, 91, 92, 93, 94, 95, 96, 97, 98, 99, 100.

Division III (Section "A")—St John's "B" 1, 2, 3, 4, 5, 6, 7, 8, 9, 10, 11, 12, 13, 14, 15, 16, 17, 18, 19, 20, 21, 22, 23, 24, 25, 26, 27, 28, 29, 30, 31, 32, 33, 34, 35, 36, 37, 38, 39, 40, 41, 42, 43, 44, 45, 46, 47, 48, 49, 50, 51, 52, 53, 54, 55, 56, 57, 58, 59, 60, 61, 62, 63, 64, 65, 66, 67, 68, 69, 70, 71, 72, 73, 74, 75, 76, 77, 78, 79, 80, 81, 82, 83, 84, 85, 86, 87, 88, 89, 90, 91, 92, 93, 94, 95, 96, 97, 98, 99, 100.

Division III (Section "B")—St John's "C" 1, 2, 3, 4, 5, 6, 7, 8, 9, 10, 11, 12, 13, 14, 15, 16, 17, 18, 19, 20, 21, 22, 23, 24, 25, 26, 27, 28, 29, 30, 31, 32, 33, 34, 35, 36, 37, 38, 39, 40, 41, 42, 43, 44, 45, 46, 47, 48, 49, 50, 51, 52, 53, 54, 55, 56, 57, 58, 59, 60, 61, 62, 63, 64, 65, 66, 67, 68, 69, 70, 71, 72, 73, 74, 75, 76, 77, 78, 79, 80, 81, 82, 83, 84, 85, 86, 87, 88, 89, 90, 91, 92, 93, 94, 95, 96, 97, 98, 99, 100.

LEAGUE TABLES

Senior Section				
Division I	P	W	D	L
Portsmouth "B"	2	2	0	0
Portsmouth "A"	2	2	0	0
Common. Chr.	2	1	1	0

Division II				
St John's "A"	P	W	D	L
St John's "A"	2	1	1	0
Common. Chr.	2	1	1	0

Division III				
St John's "B"	P	W	D	L
St John's "B"	2	1	1	0
Common. Chr.	2	1	1	0

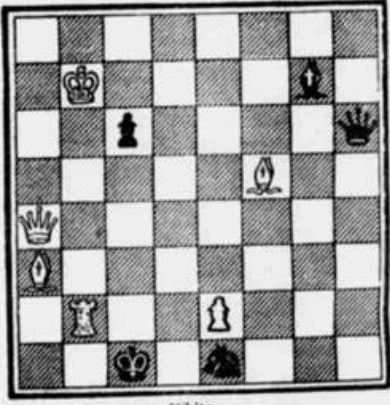
SCHOOLS SECTION				
Division I (Section "A")				
St John's "C"	P	W	D	L
St John's "C"	2	2	0	0
Farnham Grammar "A"	2	1	1	0
Portsmouth "A"	2	1	1	0

Division I (Section "B")				
St John's "D"	P	W	D	L
St John's "D"	2	2	0	0
Technical High "A"	2	1	1	0
Portsmouth "B"	2	1	1	0

Division II (Section "A")				
St John's "E"	P	W	D	L
St John's "E"	2	2	0	0
Technical High "B"	2	1	1	0
Portsmouth "C"	2	1	1	0

Division II (Section "B")				
St John's "F"	P	W	D	L
St John's "F"	2	2	0	0
Farnham Grammar "B"	2	1	1	0
Portsmouth "D"	2	1	1	0

By F. JANET (B.C.M. 1918)



White to move and mate in two.

Chess Notes

Hampshire Sparkle In First County Match

HAMPSHIRE did exceptionally well against a strong Surrey team in the first County match of the season.

On the "top 20" (for the S.C.C.U. Championship) the score stands at $8\frac{1}{2}$ — $8\frac{1}{2}$ with three games for adjudication.

It is over the full 50 boards in the "Amboyna Shield" match, however, that Hampshire achieved the best result, the score standing at 25—20 in Hampshire's favour with five games for adjudication.

Hampshire must therefore win the "Amboyna" match and should run their opponents very close in the S.C.C.U. match.

Detailed scores of local players taking part:—

- Board 6, T. J. De Buriatte (Fareham) v. B. Bietski, for adjudication.
- 7, N. C. Taylor (Fareham) lost to C. H. Jago.
- 8, Cmdr. A. J. Peters (Portsmouth) drew with R. Weisz.
- 14, R. L. Paige (Cosham) lost to F. J. Prowse.
- 15, Dr. B. G. Wells (Portsmouth) beat G. C. Nurse.
- 20, Y. J. E. Yeeles (Gosport) beat R. E. James.
- 21, A. F. Brameld (Gosport) lost to F. A. Davis.

25, P. M. Collins (Portsmouth) lost to P. M. Shaw.

28, W. Makar (Portsmouth) beat S. G. R. Champ.

30, B. S. Carter (Portsmouth Community Centre) v. C. S. Williams, for adjudication.

34, L. West (Portsmouth Community Centre) lost to B. Tombleson.

36, A. S. Le Lond (Portsmouth Community Centre) lost to A. M. Grayston.

37, J. H. Jones (Gosport) beat R. Taylor.

38, D. M. Heywood (Portsmouth) beat L. A. L. Montant.

39, T. E. Follington (Cosham) lost to D. W. Kay.

40, J. E. C. Grant (Fareham) lost to R. E. Boxall.

46, A. F. Garner (Fareham) lost to M. George.

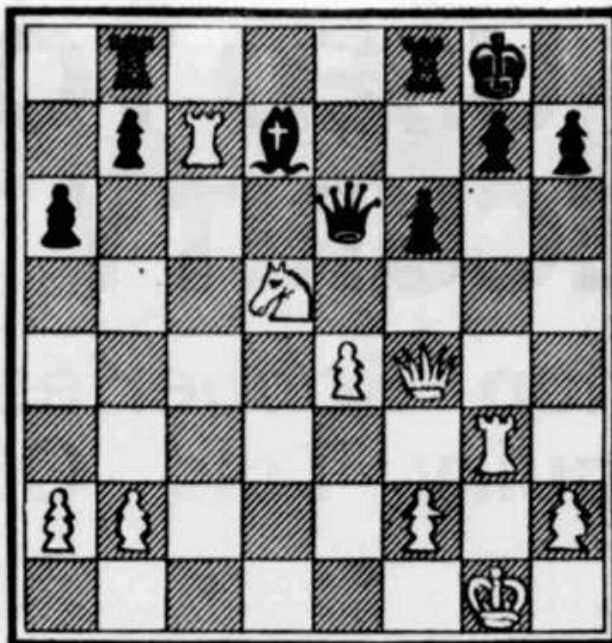
PORTSMOUTH LEAGUE

Only one match result has become available this week, and this is in Division II of the Senior Section:—

- Vesper 2, Gosport "A" 3. (J. Grant $\frac{1}{2}$, H. W. Tripp $\frac{1}{2}$; E. G. Potter $\frac{1}{2}$, A. N. Dossett $\frac{1}{2}$; C. Brading $\frac{1}{2}$, J. Hardcastle $\frac{1}{2}$; R. Hughes 0, R. Clarke 1; A. Lynton $\frac{1}{2}$, H. J. Taylor $\frac{1}{2}$).

Gosport Grammar School has withdrawn its "C" team in the Schools

BLACK



WHITE

White to play and win a piece.

Section because of pressure of work for January examinations.

This will leave five teams in Section "B" of Division II and these teams will now play each other twice instead of once.

First round results in the Individual Championship of the Portsmouth and District League are as follows:—

- Richardson 1, Woods 0; Moir $\frac{1}{2}$, Collins $\frac{1}{2}$; West $\frac{1}{2}$, Bacon $\frac{1}{2}$; Potter 1, Lee 0; Price 1, Leggett 0; Yeeles 1, Follington 0; Taylor 0, Carter 1; Wells 0, Paige 1; Crossin 0, Eaton 1; Makar 1, Lamb 0; Grant 1, March 0; Evans 1, Adams 0; Smith (J.) 0, De Buriatte 1.

THIS WEEK'S DIAGRAM

Like most keen chess players, the writer carefully preserves the scores of all his past games. Looking through the "archives" recently, he came across a game played in October 1951, from which this week's published position arose (after Black's 29th move).

What was not obvious to him ten years ago now "sticks out like a sore thumb". He actually played a non-committal move and Black covered with 30... R-B2.

Being very wise after the event, it seems that White could have won a piece by 30. R x B!

Chess Notes

Division III teams evenly matched

THERE have been no results this week for Divisions I and II of the Senior Section of the Portsmouth League, but there has been a substantial rearrangement of positions in Division III. College of Technology have moved to the top of the table following their win against St John's College, and we seem to have five very evenly matched teams in this Division.

In the Schools' Section, St John's still lead in all divisions, although Parbrook's Under-15 team has improved its position following its second win of the season.

SENIOR SECTION

Division III — St John's "B" 1; Portsmouth "A" 2; (A. Lakin 3, H. Davis 1, M. Rice 1, J. Hardcastle 2; C. Laker 2, J. Stratton 1, R. Shaw-Brown 2, West 1, L. Gallaway 2, C. Langford 1); Portsmouth "C" 3; De Havilland 2½; (J. I. Smith 1, J. L. Carty 2, B. Smith 1, R. Price 2, R. Ralls 2, Rev. H. Miles 1, R. Finney 2, R. J. Woods 2, R. Steel 1); College of Technology 4; St John's "B" 1½; (M. Chadwick 2, S. Carter 2, B. Hill 1, M. Rice 2, H. G. Gordon 1, R. Shaw-Brown 2, S. Bales 1, J. Gallaway 2, G. A. Bagnall 1, R. Griffin 1).

SCHOOLS' SECTION

Division 1 (Section "A") — Parbrook "A" 2½; Southern Grammar 2½; (S. Egan 2, M. March 1, A. Leadbetter 2, M. J. Wood 1, A. Bonoff 1, R. J. Woods 2, M. Boring 1, J. L. Nova 2, N. Walker 2, D. F. Lea 2); Southern Grammar 2; St John's "B" 1½; (M. M. March 1, P. Penhale 2, J. Jones 2, J. Woods 2, C. Thomas 1, B. J. Woods 2, A. Clark 1, J. E. Davis 2, C. A. Moore 1, D. P. Miller 2).

Division II (Section "B") — Prices "B" 1½; St John's "B" 1½; (C. Mason 2, D. Johnson 2, N. Davies 2, R. H. Herring 2, D. Weston 1, G. Hayward 2, M. Preston 2, P. Jones 1, C. Laker 2, C. Pevsey 1); Parbrook "C" 1; Portsmouth Grammar "B" 2; (D. Robinson 1, Cullings 2, P. Dwyer 1, H. Garton 2, S. Pritchard 2, R. Chomley 1; P. Cavo 1, P. Giffon 2, T. P. Pears 2, J. Simpson 1); Portsmouth Grammar "B" 1; Prices "B" 4; (P. Cavo 2, C. Mason 1, A. Cullings 2, D. Weston 2, P. Hudson 2, N. Dwyer 1, P. Giffon 2, M. Parton 1); J. Simpson 1; P. Pevsey 2).

LEAGUE TABLES

Division I	P	W	D	G	P
Portsmouth "B"	2	2	0	10	2
Portsmouth "A"	2	1	0	10	2
Colton "A"	2	1	1	8	10
W.S.P.	2	1	1	8	10
Colton "A"	2	1	1	8	10
Comm. Centre	2	0	0	10	0

Division II	P	W	D	G	P
St John's "A"	2	1	0	8	2
Colton "A"	2	1	1	10	10
Colton "B"	2	1	1	10	10
Colton "B"	2	1	1	10	10
Vener	2	0	0	10	0

Division III	P	W	D	G	P
College of Technology	2	1	0	10	2
Portsmouth "C"	2	1	0	10	2
De Havilland	2	1	0	10	2
Colton "B"	2	1	0	10	2
St John's "B"	2	1	0	10	2

SCHOOLS' SECTION

Division I (Section "A")	P	W	D	G	P
St John's "A"	2	1	0	10	2
Southern Grammar	2	1	1	8	10
Prices "A"	2	1	1	8	10
General Grammar "A"	2	1	1	8	10
Parbrook "A"	2	0	1	8	10

Division I (Section "B")	P	W	D	G	P
St John's "B"	2	2	0	10	2
Tock High "A"	2	1	0	10	10
Waverley "A"	2	1	0	10	10
Parbrook "B"	2	0	0	10	0
General Grammar "B"	2	0	0	10	0

Division II (Section "A")	P	W	D	G	P
St John's "A"	2	2	0	10	2
Waverley "B"	2	1	0	10	10
Tock High "B"	2	1	0	10	10
Parbrook "B"	2	1	0	10	10
General Grammar "A"	2	0	0	10	0

Division II (Section "B")	P	W	D	G	P
St John's "B"	2	2	0	10	2
Portsmouth "B"	2	1	0	10	10
Parbrook "B"	2	1	0	10	10
Waverley "B"	2	0	0	10	0

Third round Individual Championship results so far received are: De Baratte 1, Price 2, Verley 2, Paige 1; Green 2, Collins 1; Evans 2, Brown 2; Paine 2, Blaxton 1; Richardson 2, March 1; Woods 2, Hollington 1; Dr. J. Adams 1.

T. J. De Baratte (Farnham) and

R. L. Paige (Cosham) are therefore the only two remaining players with maximum points in this contest.

HAMPSHIRE LEAGUE

There has been so much other chess news during recent weeks that the Hampshire League competition has been somewhat neglected. Portsmouth were successful against Salisbury while Young Pumpkins, the present champions, started their programme in fine style against Colham.

Results — Southampton 2½, Wootton 1½; (G. L. Pritchard 2, G. Daw 1; J. Valler 1, D. Grove 2; H. L. Parsons 2, R. D. Harding 1; V. Lushkoff 1, C. Newby 2; A. C. Barton 1, H. G. Doll 2). Young Pumpkins 2, Colham 1; (M. J. Dymond 1, R. L. Paige 2; P. M. Collins 1, G. Richardson 2; M. March 1, S. C. Nole 2; H. Jones 1, T. T. Hollington 2; C. J. Campion 1, K. Spooner 2). Bourne-mouth 1, Southampton 1; (D. K. Bevis 1, G. L. Pritchard 2, E. W. Chandler 1, J. Valler 2; A. White 2, F. R. Carter 1; G. Knott 1, V. Lushkoff 2, H. C. Lucas 1, A. C. Barton 2). Portsmouth 2, Salisbury 2; (Dr. A. J. Panton 1, F. S. Scason 2; J. Watson 2, W. W. Watson 1; R. C. Woodthorpe 2, J. D. Herring 1; G. E. Follham 1, A. J. Bentley 2; H. C. Bailey 1, P. J. Hodgman 2).

COUNTY NEWS

Second round results in the Hampshire Individual Championship Tournament were: Henshaw 2, Evans 1; Hocking 1, Dymond 2; Hollington 2, B. Harding 1; Marshall 1, Moor 2; Paige 2, Verley 2; Pratton 1, Jones 2; Russell 1, Berkert 2; Edmonds 1; Vine 2, Grove 2; Wells 1, Collins 2; West 1, La Lund 2; Mansfield 1, Bevis 2, Knott 2, White 2, De Baratte had a bye.

Pairings for Round II (with scores to date in brackets) are: Pratton (2) v. Thompson (2); Edmonds (2) v. Mansfield (2); Evans (2) v. Hocking (2); Verley (2) v. Marshall (2); Hocking (2) v. Paige (2); Bevis (2) v. Knott (2); White (2) v. Russell (2); Jones (2) v. West (2); Kirkham (2) v. Wells (2); Grove (2) v. Knott (2); White (2) v. Vine (2); De Baratte (2) v. Hollington (2); Collins (2) v. Berkert (2); Moor (2) v. Valler (2). La Lund has a bye.

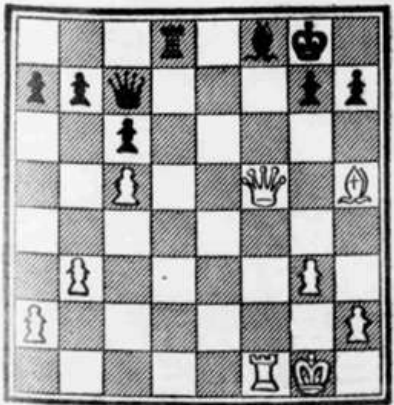
PROBLEM

The key move in last week's problem was B-KB4 (Threat Q-B1). If B x B2 B x Q mate.

As a change from problems (which are not everyone's "meat") we are fortunate in having available a selection of interesting positions from actual play, with notes by a well known local chess player who wishes to remain anonymous.

The first of these is published this week. The position arises in the game Hon v. Boudjoghre at New York 1924. Richard Roth (white) made two moves from the diagrammed position, caused his opponent to resign and was himself the First Brilliant Prize. What were they? (Solution next week).

BLACK



WHITE

White to play and win.

Chess Notes

Young Pompeians are to the fore again

YOUNG POMPEIANS are through to the second round of the National Club Championship Tournament.

When it was announced a few weeks ago that this team of youthful enthusiasts intended to compete, we wished them luck but did not expect to see them go very far against this very tough opposition.

Now they have beaten a team from Slough (which contains five regular county players) by the remarkable margin of six games to nil, it seems that they could go quite a long way in this competition.

Detailed scores of the match, which was played at Guildford are: Young Pompeians 6, Slough Community Centre 0. (M. J. Dymond 1, M. E. N. Vetcham 0; R. L. Paige 1, Dr. E. N. Bramley 0; A. F. Brameld 1, D. G. Summers 0; M. M. March 1, R. W. Woolford 0; C. J. Campion 1, A. Lorman 0; J. H. Jones 1, R. Owen 0).

PORTSMOUTH LEAGUE
There has not been a lot of activity during the week in the Portsmouth League, although one complete round has been played in the top division. The outcome is a rise of one place in the table for R.N.P.L.

In the Schools Section, Prizes "A" were disappointed that they did not do better against St John's "C" after running their rivals so close last season.

It seems that nobody is able to stop St John's this year.

Results

SENIOR SECTION

Division I. — Portsmouth "A" 4½, Community Centre ½ (Dr. A. J. Panton 1, A. Hayes 0, Condr. A. J. Peters 1, A. S. La Lond 0, W. Makar 1, S. F. Adams 0, G. Feltham ½, D. A. Johnson ½; D. M. Heywood 1, M. James 0), Farnham "A" 1½, R.N.P.L. 2½ (W. H. Pratten 1, W. J. E. Yeates 0, N. C. Taylor 0, A. F. Brameld 1; T. J. De Burialle ½, W. J. Eaton ½; A. Evans 0, J. H. Jones 1; R. J. Tyack 0, E. Taylor 1), Cosham "A" 1, Portsmouth "B" 4 (R. L. Paige 1, M. J. Dymond 1, C. F. Way 0, P. M. Collins 1, S. C. Nock 1, M. E. N. Vetcham 1; A. D. Crossin 1, H. C. Bailey 0, T. E. Hollington 0, A. Bacon 1).

SCHOOLS SECTION

Division I (Section "A"). — Prizes "A" 1, St John's "C" 4 (H. Curtis 0, P. Pemberton-James 1, J. J. Tyack 0, C. Thomas 1; B. A. Keen ½, Clark ½; M. Farrey 0, C. Moore 1; I. Crawford 1, P. Miller ½).

SENIOR SECTION

Division I

	P	W	D	G	P
Portsmouth "B"	4	0	14	4	
Portsmouth "A"	4	2	12	3	
R.N.P.L.	4	1	11	½	
Farnham "A"	4	1	9	1½	
Comm. Centre	4	0	6	0	

Division II

	P	W	D	G	P
St John's "A"	3	2	9	2	
Gosport "A"	2	1	5½	1½	
Cosham "B"	3	1	7	1½	
Farnham "B"	2	1	6	5½	1
Vesper	2	0	3	0	

Division III

	P	W	D	G	P
Coll. of Tech.	3	2	0	2½	2
Portsmouth "C"	3	1	1	7½	1½
De Havilland	3	1	1	7½	1½
Gosport "B"	2	1	0	5	1
St John's "B"	3	0	6½	1	

SCHOOLS SECTION

Division I (Section "A")

	P	W	D	G	P
St John's "C"	4	0	16½	4	
Southern Gram.	3	1	1	8	1½
Prizes "A"	2	1	0	4	1
Gosport Gram. "A"	2	1	0	3½	1
Purbrook "A"	5	0	1	8	½

Division I (Section "B")

	P	W	D	G	P
St John's "D"	3	3	0	12½	5
Tech. High "A"	1	1	0	2½	½
Hilsea Mod. "A"	2	0	1	3½	½
Purbrook "B"	1	0	0	5½	0
Gosport Gram. "B"	1	0	0	6	0

Division II (Section "A")

	P	W	D	G	P
St John's "E"	2	2	0	10	2
Hilsea Mod. "B"	2	1	2	3	1
Tech. High "B"	1	0	2	0	0
Portchester Mod.	1	0	0	0	0
Portsmouth Gram.	0	0	0	0	0

Division II (Section "B")

	P	W	D	G	P
St John's "F"	2	0	8	2½	2
Purbrook "C"	3	2	0	7	2
Prizes "B"	2	0	0	7½	1
Portsmouth Gram. "B"	2	0	0	3	0
Paulsgrove Mod.	0	0	0	0	0

HAMPSHIRE LEAGUE
Both Portsmouth and Young Pompeians improved their positions in the Hampshire League following their latest wins against Southampton and Andover respectively.

We are glad to see that Dr. Wells won his game against F. R. Carter. Only a few minutes before the match was due to start, the writer received a distraught telephone call from the doctor, who was at Southsea having mistakenly assumed that the match

versus Southampton was at home. The fact that he completed the game must mean that he made very good time indeed on his motor-scooter between Portsmouth and Southampton.

Detailed scores. — Southampton 1, Portsmouth 4 (G. L. Pritchard 0, Dr. A. J. Panton 1; J. Valler 0, Condr. A. J. Peters 1; F. R. Carter 0, Dr. G. Wells 1; V. Lushkott 0, M. P. Cook 1; A. C. Bastion 1, G. Feltham 0; Andover 1, Young Pompeians 4 (C. H. Henshaw 0, M. J. Dymond 1; H. Lawrence ½, P. M. Collins 1; M. C. Jarvis 0, A. F. Brameld 1; S. L. Russell ½, M. M. March ½; R. J. Haddrell 0, J. H. Jones 1).

LEAGUE TABLE

	P	W	D	G	P
Portsmouth	3	7	0	11	
Young Pompeians	2	2	0	9	2
Bouricmouth	2	2	0	7½	2
Andover	2	1	0	6	1
Southampton	3	1	0	25½	1
Fareham	1	0	0	2	0
Salisbury	2	0	0	5½	0
Woolston	1	0	0	1½	0
Cosham	2	0	0	1	0

JAMBOREE
Twelve teams took part in the recent Jamboree organized by the Southampton Chess League, including one team each from Fareham and Cosham Chess Clubs.

University "B" won the Section "B" contest but two outstanding adaptations will determine the final order of the first four teams in Section "A".

Detailed scores of local players were: R. L. Paige (Cosham) 1, W. H. Pratten (Fareham) 0, R. C. Mitchell 1, D. J. Groves 0, T. E. Hollington (Cosham) 1, L. E. Vinc 1, J. E. Grant (Fareham) 0; W. Cuse 0, M. Leggett (Cosham) 1; E. G. Potter (Fareham) 0, C. Harding 1; A. C. Barton 1, R. P. L. Pett (Cosham) 0; A. F. Garner (Fareham) 1, H. Finch 0; J. Hodgkinson (Cosham) 1, K. Robinson 0; A. Cooke 0, D. A. Blaxson (Fareham) 1.

LOST PROPERTY
On the night of November 28, a bundle of postcards were lost during a journey by train from Southampton to Cosham Station, and thereafter to Paulsgrove.

These cards contain the only records of certain schools results in the Southampton League and have the name and address of K. Robinson on the reverse.

As these records are a serious loss to the Southampton League, a reward is offered to anyone finding them and returning them to the League's Secretary or to Mr. T. E. Hollington, of 38, Braitree Road, Paulsgrove.

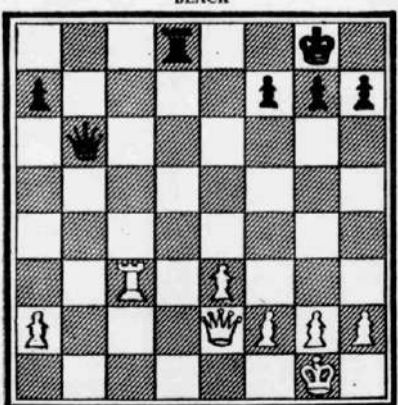
NATIONAL SCHOOLS TOURNAMENT
Local pairings for the fourth round of the National Schools Tournament are Portsmouth Grammar School v. Hove Grammar, Charchers College v. St John's, Southsea, and Prizes School v. King Edward VIII School.

PROBLEM
The solution to last week's "White to play and win" position was: 1. B-B7 (ch.) K-R1. 2. B-K8! Resigns, as Black must lose a piece at least.

The diagrammed position published this week arose in a game won by Capablanca in 1914. A series of exchanges have just been completed on White's QB7, and now Black gives white such a shock that he resigns. What is the move? (Answer next week).



BLACK



WHITE

Black to play and win.

Chess Notes

KENT TOO STRONG FOR HAMPSHIRE

HAMPSHIRE were unable to hold a strong Kent team in their latest County match, and the final score stands at Hants 7½, Kent 9½ (with 1 game for adjudication) in the S.C.C.U. Championship match and Hants 20½, Kent 26½ (with 1 game for adjudication) in the Amboyna Shield match.

Detailed scores of local players taking part were as follows:—

Bd. 2 Cndr. A. J. Peters (Portsmouth) ½, P. B. Cook ½.

4 R. L. Faige (Cosham) ½, J. F. S. Rumble ½.

5 Dr. A. J. Fosnot (Portsmouth) 1, J. W. Eccles 0.

9 M. J. Dymond (Portsmouth) 0, P. Hannan 1.

10 J. H. Jones (R.N.P.L.) ½, G. Champion ½.

14 A. F. Bramfield (R.N.P.L.) 1, K. F. Champion 0.

21 T. J. De Buriatte (Fareham) ½, J. Lewellyn-Jones ½.

24 A. S. La Lond (Comm. Ctr.) 1, G. H. Redfern 0.

29 J. P. Price (Portsmouth) 0, Dr. R. G. Fricker 1.

32 W. J. Eaton (R.N.P.L.) 1, Default 0.

30 T. E. Hollington (Cosham) 1, Default 0.

34 A. F. Garner (Fareham) ½, A. A. Mann ½.

PORTSMOUTH LEAGUE

As things now stand, one win can make quite a big difference to the relative position of a team in the tables. For example, Fareham 'B' move from 4th to 2nd place following their win against Vosper, while both Gosport Grammar's 'A' and 'B' teams also jump to second place in their respective sections in Division I of the Schools Section.

Even more remarkable is the fact that St John's 'B' move from the bottom to the top of the Third Division (Senior Section) by beating Portsmouth 'C'.

RESULTS

SENIOR SECTION

DIVISION 2

Vosper 2, Fareham 'B' 3 (J. Grant ½, D. A. Blossom ½; E. G. Potter 0, B. A. Keen 1; C. W. Brading 1, A. F. Garner 0; A. Lynson 0, G. Houghton 1; R. Hughes ½, G. W. S. Goggin ½).

DIVISION 3

St John's 'B' 4, Portsmouth 'C' 1 (A. Lakin 0, J. E. Smith 1; M. Rice 1, R. Price 0; R. Shaw-Brown 1, Rev. H. Miller 0; L. Gallaway 1, B. J. Press 0; B. O'Brien 1, E. J. Cauty 0).

SCHOOLS SECTION

DIVISION I (SECTION A)

Prices 'A' 2, Gosport Grammar 'A' 3 (B. A. Keen 1, W. Rance 0; R. J. Tyack 1, G. Williams 0; C. Mason 0, M. Shaw 1; C. Gay 0, R. Crowe 1; P. Durant 0, R. Jones 1).

DIVISION I (SECTION B)

Portbrook 'B' 2, Gosport Grammar 'B' 3 (P. Vosa 0, L. Stubbington 1; D. Nicholson 1, S. Goldswicht 0; D. Ellis 0, J. Harrington 1; J. Wilson 0, D. Lowe 1; M. Beasley 1, P. Wood 0).

DIVISION II (SECTION B)

Portbrook 'C' 3, Prices 'B' 2 (D. Nicholson 1, C. Mason 0; P. Druce 1, D. Weston 0; R. Lintott 0, M. Parrott 1; P. Cave 1, C. Jones 0; T. Pickles 0, P. Przybycin 1).

TABLES

SENIOR SECTION

Division 1

	P	W	D	G	P
Portsmouth 'B'	4	4	0	14	4
Portsmouth 'A'	4	3	0	12	3
R.N.P.L.	4	2	1	11	2.5
Cosham 'A'	4	1	0	9	1.5
Fareham 'A'	4	1	0	8	1
Comm. Ctr.	4	0	0	0	0

Division 2

	P	W	D	G	P
St John's 'A'	3	2	0	9	2
Fareham 'B'	3	2	0	8.5	2
Gosport 'A'	3	1	1	5.5	1.5
Cosham 'B'	3	1	1	7	1.5
Vosper	3	0	0	5	0

Division 3

	P	W	D	G	P
St John's 'B'	4	2	0	10.5	2
Coll. of Tech.	3	2	0	7.5	2
De Havillands	3	1	1	5.5	1.5
Portsmouth 'C'	4	1	1	8.5	1.5
Gosport 'B'	2	1	0	5	1

SCHOOLS SECTION

Division 1 (Section A)

	P	W	D	G	P
St John's 'C'	4	4	0	16.5	4
Gosport Grammar 'A'	3	2	0	8.5	2
Southern Gramm.	3	1	1	8	1.5
Prices 'A'	3	1	0	6	1
Portbrook 'A'	3	0	1	8	.5

Division 1 (Section B)

	P	W	D	G	P
St John's 'D'	3	3	0	13.5	3
Gosport Grammar 'B'	2	1	0	3	1
Tech. High 'A'	1	0	1	2.5	.5
Hilsea Mod. 'A'	2	0	1	2.5	.5
Portbrook 'B'	2	0	0	2	0

Division 2 (Section A)

	P	W	D	G	P
St John's 'E'	2	2	0	10	2
Hilsea Mod. 'B'	2	1	0	3	1
Tech. High 'B'	1	0	0	2	0
Portchester Mod.	1	0	0	0	0
Portsmouth Gram. 'A'	0	0	0	0	0

Division 2 (Section B)

	P	W	D	G	P
Portbrook 'C'	4	3	0	10	3
St John's 'F'	3	2	0	7.5	2
Prices 'B'	4	1	0	9.5	1
Portsmouth Gram. 'B'	2	0	0	3	0
Paulsgrove Mod.	0	0	0	0	0

HAMPSHIRE LEAGUE

Fareham lost their second Hampshire League match of the season and join Cosham at the foot of the table. Meanwhile Woolston pull up four places following their win against Andover.

Results

Woolston 4, Andover 1 (M. Thompson 1, C. H. Henshaw 0; G. Daw 1, S. L. Russell 0; A. Hocking 0, M. C. Jarvis 1; R. S. Learmouth 1, R. J. Haddrell 0; D. Drew 1, G. D. Young 0).

Salisbury 4, Fareham 1 (F. S. Scanes 1, N. C. Taylor 0; W. W. Watson 1, T. J. De Buriatte 0; J. D. Herring ½, A. J. Evans ½; A. J. Bentley 1, D. A. Blossom 0; R. T. Treager ½, R. J. Tyack ½).

TABLE

	P	W	D	G	P
Portsmouth	3	2	0	11	3
Young Pompeians	2	2	0	9	2
Bournemouth	2	2	0	7.5	2
Woolston	2	1	0	5.5	1
Salisbury	3	1	0	7.5	1
Southampton	3	1	0	5.5	1
Andover	3	1	0	5	1
Fareham	2	0	0	3	0
Cosham	2	0	0	1	0

National Schools Tournament

St John's College knocked out Charter's College, Petersfield from the National Schools Tournament in no uncertain manner and move confidently on into the fifth round.

Scores: St John's College 4, Charter's College 0 (P. Pemberton-James 1, A. Blake 0; A. Clark 1, M. Dodson 0; C. Moore 1, K. Basley 0; P. Miller 1, D. Sampson 0; A. Lakin 1, Q. Boatman 0; M. Rice 1, M. Gardner 0).

Problem

The "move" in last week's position was 1... Q-N7? 2. Resigns. As a change from positions from Master play, we are publishing this week one of several rather interesting positions arising from local play which have been submitted for adjudication recently.

In the diagrammed position, Black is to move and not unnaturally claimed a win.

CLAIM STAKED



FOR CHAMPIONSHIP HONOURS

NOW that R.N.P.L. have beaten Portsmouth 'B' they thereby stake a claim to the Championship title in the Portsmouth League. Admittedly, the Portsmouth team were not at full strength, but it now seems certain that the title must go to one of the three leading teams in Division 1.

In Division 2, Vosper obtained their first match win, whilst in Division 3, De Havillands had a good win against Gosport 'B'.

In the Schools Section, Purbrook 'B' have improved their position considerably following two wins in succession.

RESULTS

SENIOR SECTION
 Division 1: Portsmouth 'B' 1½, R.N.P.L. 3½ (M. P. Cook ½, W. J. E. Yeates ½; M. M. March 0, A. F. Brameld 1; J. C. Fish

1, W. J. Eaton 0; A. Bacon 0, J. H. Jones 1; H. C. Bailey 0, E. Taylor 1).

Division 2: Cosham 'B' 2, Vosper 3 (T. E. Hollington 1, J. Grant 0; H. C. Smith 1, E. G. Potter 0; M. Leggett 0; C. Brading 1; M. Barnett 0; R. Hughes 1; R. P. L. Pett 0, A. Lynton 1).

Division 3: De Havillands 4, Gosport 'B' 1 (B. Smith 1, J. Stratton 0; M. Woods 1, S. Went 0; R. Ralls 1, D. Byng 0; L. Langley 1, C. Langridge 0; D. Walker 0; H. J. Taylor 1).

SCHOOLS SECTION

Division 1 (Section B): Hilsa Modern 'A' 2, Purbrook 'B' 3 (R. Dawson 0, P. Voss 1; F. Kidby 1, J. Wilson 0; D. Baker 0, D. Ellis 1; R. Adams 0, D. Nicholson 1; K. Clarke 1, M. Beasley 0).

Purbrook 'B' 4, Technical High 'A' 1 (P. Voss 0, R. Tringham 1; D. Ellis 1, G. Dondell 0; Francis 1, P. Bugden 0; D. Nicholson 1, J. Brindle 0; M. Beasley 1, R. Howey 0).

TABLES

SENIOR SECTION					
Division 1					
	P	W	D	G	P
Portsmouth 'B'	5	4	4	13½	4
R.N.P.L.	5	2	1	11½	2½
Portsmouth 'A'	4	1	1	7	1
Cosham 'A'	4	1	1	7	1
Fareham 'A'	4	1	1	7	1
Community Centre	4	1	1	7	1
Division 2					
	P	W	D	G	P
St John's 'A'	3	2	1	4½	2
Fareham 'B'	3	2	1	4½	2
Gosport 'A'	4	1	1	7	1
Cosham 'B'	4	1	1	7	1
Vosper	4	1	1	7	1
Division 3					
	P	W	D	G	P
De Havillands	4	2	1	11½	2½
St John's 'B'	4	2	1	11½	2½
College of Technology	3	2	1	7	2
Portsmouth 'C'	3	2	1	7	2
Gosport 'B'	3	1	1	7	1½

SCHOOLS SECTION

Division 1 (Section A)					
	P	W	D	G	P
St John's 'C'	4	4	0	14½	2
Gosport Grammar 'A'	3	2	0	10	2
Southern Grammar	3	1	0	8	1½
Prices 'A'	3	1	0	8	1½
Purbrook 'A'	3	1	0	8	1½
Division 2 (Section A)					
	P	W	D	G	P
St John's 'D'	3	3	0	13½	2
Purbrook 'B'	3	2	0	10	2
Gosport Grammar 'B'	4	2	0	10	2
Hilsa Modern 'A'	3	2	1	10	1½
Technical High 'A'	3	2	1	10	1½
Division 2 (Section B)					
	P	W	D	G	P
Purbrook 'C'	4	2	0	10	2
St John's 'E'	4	2	0	10	2
Prices 'B'	4	1	0	10	1
Portsmouth Gram. 'B'	3	2	0	10	2
Paulsgrove Modern	3	2	0	10	2

HAMPSHIRE LEAGUE

The local match in the Hampshire League between Fareham and Cosham was a contest to decide which team should avoid bottom place in the table.

Cosham won by the odd game and Fareham (rather a shadow of their former strength) sink to rock bottom.

Scores: Fareham 2, Cosham 3. (N. C. Taylor 0, R. I. Paige 1; T. J. De Buriatte ½, A. D. Crossin ½; J. Grant 0, T. E. Hollington 1; A. J. Evans 1, M. R. Barnett 0; R. J. Tyack ½, R. P. L. Pett 1½).

TABLE

	P	W	D	G	P
Portsmouth	3	4	1	11	1
Young Pampelona	3	3	1	10	1
Bournemouth	3	2	1	10	1
Woolston	3	2	1	10	1
Salisbury	3	2	1	10	1
Southampton	3	2	1	10	1
Andover	3	2	1	10	1
Cosham	3	1	1	7	1
Fareham	3	0	1	7	1

International Postal Chess In the early part of 1960, an International Inter-Club Postal Tournament was organized by a Dutch Club and Portsmouth Chess Club entered a team of five players. So far as we know, they were the only Club in Hampshire to do so.

The final scores in this tournament have only recently come

in and Portsmouth's total was 12 points out of the 30 games. This was not enough to put them among the leaders, but the match did provide the very interesting experience of corresponding with players all over Europe.

Detailed scores of the Portsmouth team include: W. A. Way (Match Captain) P.6, W.6; Dr. B. G. Wells P.6, W.2, L.4; H. C. Bailey P.6, W.1, D.2, L.3; D. M. Heywood P.6, W.2, L.4.

The following is of what Mr. Way considers his most exciting game.

White W. A. Way, Black R. Sietlaf (Ulm, Germany). 1. P-K4 P-K4; 2. Kt-KB3 Kt-QB3; 3. B-Kt5 P-QR3; 4. B-R4 Kt-KB3; 5. 0-0 B-K2; 6. P-Q4 P x P; 7. P-K5 Kt-K5; 8. Kt x P Kt-B4; 9. Kt-B5 B-KB1; 10. R-K1 Kt x B; 11. Kt-Q6 ch B x Kt; 12. P x Bch K-B1; 13. P-QK3 Q-B3; 14. B-R3 P-QK4; 15. P x Pch P-Kt5; 16. P x Kt P x B; 17. Kt-B3 R-R2; 18. Kt-K4 Q-Q5; 19. Q-B3 Kt-K2; 20. QR-Q1 Q-K4; 21. Kt-Q6 Q-B3; 22. R x Kt K x R; 23. Kt-B5ch K-B1; 24. Q-Pch K-Kt1; 25. Kt-Ktch Q x Kt; Q x Q P-B3; 27. R x P Resigns.

Jamboree: When this Southampton event was reported a couple of weeks ago, there were two adjudications holding up the final result. These have now been received, viz: G. Daw (Brampton) 1, J. Valler (Southampton) 0; D. J. Groves (University) ½, T. E. Hollington (Cosham) ½.

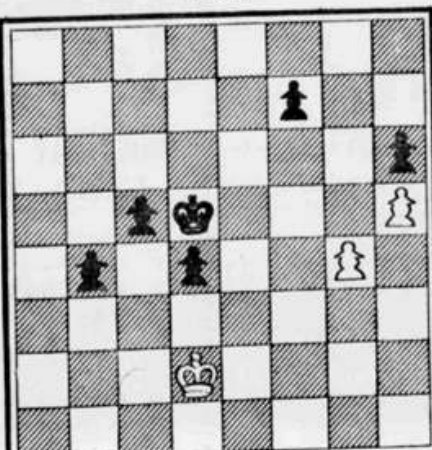
This was enough to put University ahead of Cosham and the final placings in Section 'A' were as under:

University 'A'	4½	points
COSHAM	4	"
Southampton	4	"
Brampton	2½	"
Old Yambourians	2½	"
FAREHAM	2	"
Andover 'A'	1½	"

DIAGRAM

This week we have another position selected as being of particular interest to our readers. It is an End-Game Study by Horwitz and Kling from a collection of their compositions published over 100 years ago.

Solution (and notes) will be published next week.



(BLACK)

(WHITE)
White to move and win.