

CHESS NOTES

26th March, 1979.

The Portsmouth & District League's Annual Team Lightning Chess tournament will take place at Fareham Chess Club on Monday, 21st May. Teams will comprise 5 players and entries are requested by the League Secretary as soon as possible so that he can finalise arrangements.

Latest results (and Tables) for the top three Divisions of the League's Senior Team Championships are set out below, from which I am pleased to note that both Fareham's A and B teams have picked up some valuable match points.

Division 1: Fareham A 4, I.B.M. A 2

(W.H. Pratten 0, J.F. Wheeler 1; M.M. Street 1, W. McDougal 0; W.H. Silber 1, R.E. Hartley 0; T.J. de Buriatte 1, I. Upton 0; R.C. Clark 0, S. Hicks 1; D.C. Goddard 1, M. Dillistone 0.)

Division 2 : Polytechnic A 2½, Fareham B 3½

(P. Colwill ½, R. Perrin ½, P. Sargeaunt 0, D.C. Goddard 1; K. Clements 1, J.E.C. Grant 0; A. Grant 1, A.J. Lancashire 0; N. Argent 0, C.E. Frazer 1; R. Hough 0, M. Cole 1.)

Portsmouth B 2, Polytechnic 4

(M.J. Cawston 0, P. Colwill 1; D. Scotney 0, P. Sargeaunt 1; B.V. Cochran 0, G. Adley 1; R.M. Prince 1, A. Grant 0; S. Young 0, K. Clements 1; B. Maund 1, N. Argent 0.)

Portsmouth C 3, Fareham B 3

(I.A. Welch 1, D.C. Goddard 0; M.E. Vernon 1, J.E.C. Grant 0; M.J. Hampton ½, A.J. Lancashire ½; C. Smith 0, C.E. Frazer 1; G. Scotney 0, D.W. Coates 1; D. Law ½, M. Cole ½.)

Division 3 : I.B.M. B 3, Leigh Park A 3

(I.J. Upton ½, N.G. Le Fevre ½; S. Hicks 1, S.D. Le Fevre 0; M.J. Dillistone 1, J.R. Mortlock 0; A. Mackie 0, R. Smith 1; P.J. Burns 0, S. Dymel 1; B. Pratt ½, J.D.J. Gatt ½.)

Leigh Park A 5, Cosham C 1

(N.G. Le Fevre 1, B.C. Coppin 0; S. Dymel ½, M. Sales ½; J.D.J. Gatt 1, G. Train 0; J.R. Mortlock 1, T. Woodroffe 0; B. Mellor ½, A. Judd ½; R. Collins 1, S. Wilkinson 0.)

Polytechnic B 2, Plessey A 4

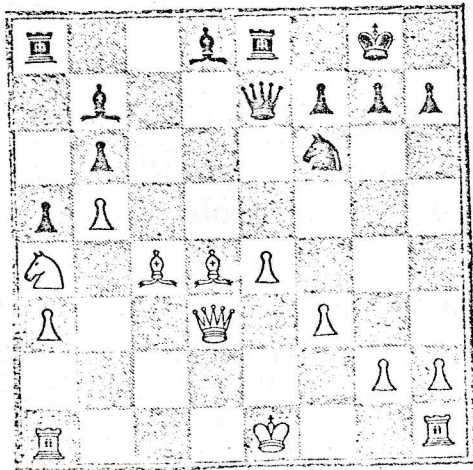
(G. Adley 0, F. Dingwall 1; K. Clements 0, R.T.F. Williams 1; N. Argent ½, J. Heath ½; R. Hough ½, D.G. Foale ½; J. May ½, E. Azulay ½; R. Poole ½, G. Howells ½.)

/Continued

Tables

	<u>P</u>	<u>W</u>	<u>D</u>	<u>F</u>	<u>A</u>	<u>Pts</u>
Division 1 :						
Portsmouth A	7	6	0	28½	13½	12
Cosham A	7	4	0	21	21	8
I.B.M. A	7	3	1	20½	21½	7
Gosport A	7	3	1	20	22	7
Fareham A	7	2	2	21	21	6
Cosham B	7	0	2	15	27	2
Division 2 :						
Community Centre A	7	7	0	33	9	14
Portsmouth C	7	4	1	23	19	9
Fareham B	7	3	1	20½	21½	7
Polytechnic A	7	3	1	20	22	7
Portsmouth B	7	1	1	15½	26½	3
Gosport B	7	1	0	14	28	2
Division 3 :						
Plessey A	9	8	0	37	17	16
I.B.M. B	8	5	2	30½	17½	12
Leigh Park A	9	2	3	23	31	7
Fareham C	8	2	2	25	23	6
Cosham C	7	2	2	19	23	6
Polytechnic B	7	0	1	9½	32½	1

In my game against young Michael Vernon reported above, I was a pawn down and thought I saw a "now or never" chance to pull the game my way. From the diagrammed position I played 22. N x P and he duly replied 23. P x N. I then played 23. Q x P+, thinking he would recapture with his Q immediately which would give me the chance for my rook to win back my piece along the rank. In fact, I resigned 6 moves later. If, however, I had played 23. B x P! things might well have turned out very differently.



J.E.C.G.