

Mcody
101

Although some teams have played more matches than others, there has been enough activity in the Schools' Section of the Portsmouth & District League so far this season to detect the likely winners. Perhaps the most interesting feature in the battle between Waterlooville Library and Great Salterns for supremacy in Division 2. Results:-

Division 1 : Mayfield A 2, St. John's A 3

(R.F. Scoffin 0, P.K. Wells 1; S.T. McGuigan 0, M.J. Hampton 1; D. Hannam 1, A.P. Nelhams 0; K. Hammond 1, V. Start 0; K. Austin 0, A.J. Daley 1.)

Portsmouth Grammar A 2½, Mayfield A 2½

(D.A. Hayward 1, D. Lee 0; A.J. Harris 1, R.F. Scoffin 0; S.D. Kneller 0, K. Hammond 1; J.M.B. Baker ½, D. Hannam ½; J.R. Culley 0, S. Symond 1.)

Division 2 : Portsmouth Grammar B 0, Priory A 5

(L.C. Ledwith 0, C. Smith 1; A.J. Jeram 0, D. Lines 1; I.D. Giles 0, T.Y. Man 1; G.D. Cameron 0, J. Weaver 1; C.D. Lennon 0, D. Wainwright 1.)

Division 3 A : Waterlooville Library B 5, Gt. Salterns B 0

(P. Rossiter 1, D. Ireland 0; Caroline Hallett 1, P.M. Simon 0; G. Rees 1, Tracey Phillips 0; F. Middleton 1, Corren Garrard 0; P. Watkins 1, J. Lock 0.)

Division 3 B : Portsmouth Grammar C 3½, St. Luke's A 1½

(P.C.R. Gurney 0, Julia Scotney 1; M. Osmond-Smith ½, Heather Waring ½; A.J. Tucker 1, M. Newman 0; D. I. Loten 1, J. McKean 0; D. Sutton 1, J. Byles 0.)

Mayfield B 1, Portsmouth Grammar C 4

(C. Taylor 0, P.C. Gurney 1; E.S. Brown 0, M. Osmond-Smith 1; J. Russell 1, D.I. Loten 0; P. White 0, D.G. Sutton 1; P. Baker 0, T. Gindell 1.)

Portsmouth Grammar C 5, City of Portsmouth Boys 0
(By default)

Tables

	<u>P</u>	<u>W</u>	<u>D</u>	<u>F</u>	<u>A</u>	<u>Pts</u>
Division 1 :						
St. Johns A	1	1	0	3	2	2
Portsmouth Grammar A	2	0	2	5	5	2
Mayfield A	3	0	2	7	8	2

/Continued

	<u>P</u>	<u>W</u>	<u>D</u>	<u>F</u>	<u>A</u>	<u>Pts</u>
Division 2 :						
Waterlooville Library	3	3	0	11	4	6
Gt. Salterns A	4	3	0	14	6	6
Priory A	3	2	0	9½	5½	4
Portsmouth Grammar B	4	2	0	10	10	4
St. Johns B	2	1	0	4	6	2
Broomfield A	2	0	0	3	7	0
Crofton A	4	0	0	3½	16½	0

Division 3 A :						
Priory B	1	1	0	5	0	2
Waterlooville Library	1	1	0	5	0	2
Gt. Salterns B	3	1	0	5	10	2
St. Johns C	1	0	0	0	5	0

Division 3 B :						
Portsmouth Grammar C	4	3	0	14½	5½	6
St. Lukes	2	1	0	6½	3½	2
City of Portsmouth Boys	2	1	0	3	7	2
Mayfield B	2	0	0	1	9	0

Further match results from the Senior Section :-

Division 2 : Gosport B 4½, Portsmouth B 1½

(J. Coles 1, M.H. Cawston 0; P.J. Eales 1, B.V. Cochran 0; P. Groth ½, R. Prince ½; P. Przybyncin 0, S. Young 1; M. Smith 1, G. Waring 0; A. Elbourn 1, S. Phillips 0.)

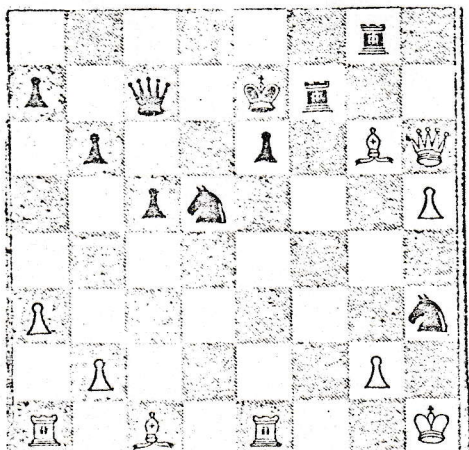
Community Centre A 6, Gosport B 0

(K.D.F. Gregory 1, P.J. Eales 0; A.F.C. Carter 1, P. Groth 0; W.D. Muir 1, P. Przybyncin 0; R. Carter 1, S. Williams 0; N. Colter 1, A. Elbourn 0; P. Rayment 1, Mrs. M. Williams 0.)

Division 3 : Fareham C 2, I.B.M. B 4

(K. Reed 0, S. Hicks 1; A. Wykes 1, M. Dillistone 0; C.V. Fairall 0, J. Liddell 1, D. Coates 1, A. Mackie 0; E. Judd 0, C. Mann 1; P. Higdon 0, P. Burns 1.)

The game between D.G. Foale and C.V. Fairall in the Plessey A v Fareham C match reported recently, which was unfinished (see diagram) when time was called, evoked some spirited debate before a draw was agreed. White felt confident until Black (to move) suggested 32. . . . Q - KN6. White would dearly love to move the QB, but it does not do him much good (e.g. 33. B - Q2 N(4) - B5!). He therefore counters with 33. Q - Q2, which gives Black cause to think; 33. . . . R - B7 fails against 34. Q x N, and if Black now tries the N(4) - B5 move, White can presumably win a Knight and destroy Black's attack.



J.E.C.G.