

# Hampshire Chess Association Newsletter

Volume 4 Issue 1/2

September 2002

## Introduction

Unfortunately only one issue of the Newsletter was published last season, due to the normal reasons (time). This year I am planning on publishing two issues, one now and the other in the New Year.

## Leagues

### Southampton League

In the tightest season for many a year, Eastleigh Unity A narrowly beat Southampton A to the title. Both teams dominated the league, only losing one match each. In the end it came down to Passed Pawn A holding Southampton A to a draw, as Southampton would have had the higher game points if the match points were the same.

In a cruel twist of fate, Southampton B could also be said to have held the destiny of the title in their hands. In their match against Eastleigh Unity A, the score was tied at two points each, with one game remaining. Tom Anderson had the opportunity of repeating the position against Martin Newbury, which would have drawn the match. Tom was unsure if a draw would be enough for Southampton B to avoid relegation and played for the win. Unfortunately Tom sealed a losing move and Eastleigh won the match.

In the end Southampton B did not need the half point, as they managed to score more game points than Eastleigh Unity B and therefore secured their place in Division One next season.

Team	P	W	D	L	GS	Pts
Eastleigh Unity A	10	9	0	1	31	18
Southampton A	10	8	1	1	32	17
Passed Pawn A	10	3	3	4	23½	9
Winchester A	10	4	0	6	23	8
Southampton B	10	1	2	7	21	4
Eastleigh Unity B	10	1	2	7	19½	4

Performance wise a number of players had excellent seasons. The best grading performances in division one were:

Name	Grade	Games	Score	%	Grad Perf
R.D.Marsh	175	10	8	80.0%	183.4
K.Esmat	165	10	6	60.0%	174.8
D.W.Bell	177	9	6	66.7%	174.1
M.G.Buckley	152	8	5.5	68.8%	171.4
T.Kazmierski	161	7	5.5	78.6%	171.1
L.Stables	150	7	5	71.4%	171.1

Special mention should also go to Dominic Tunks, who only played three league games for Passed Pawn, but won all three. This gave him a grading performance of 216!

The other division winners were:

Division	Winners
Division Two	Southern Water A
Division Three	Southampton C
Division Four	Eastleigh Unity C

Whilst relegated were:

Division	Relegated
Division Two	Ringwood
Division Three	Southern Water B

### Portsmouth League

Although it did not seem it at the time, Gosport A ended up winning the league comfortably. It looked as if their main rival for the championship was going to be Emsworth A, but in the end Emsworth fell away and Cosham A sneaked second place.

At the other end of the table, Portsmouth A had serious troubles putting a consistent team together and managed to lose all their games. After last season's 2nd place this was a dramatic fall for Portsmouth. This made things relatively comfortable for Gosport B, as they did not have to worry about a relegation fight (this was probably true for Chichester A as well).

Team	P	W	D	L	GS	Pts
Gosport A	10	8	2	0	37½	18
Cosham A	10	5	3	2	36	13
Emsworth A	10	5	1	4	30½	11
Chichester A	10	4	2	4	32½	10
Gosport B	10	4	0	6	27½	8
Portsmouth A	10	0	0	10	16	0

The other division winners were:

Division	Winners
Division Two	Emsworth B
Division Three	Gosport C

Whilst relegated were:

Division	Relegated
Division Two	Cosham C



The Portsmouth League has trophies for the best performances. The John Grant Trophy is awarded to the player with the best percentage score for an individual team (you have to play a minimum of 5 games).

The Ruth Rose Cup is for veterans with the best score in the Portsmouth League, who have not previously won the cup

#### John Grant Trophy

Player	Club	Score	%
J.H.Jones	Gosport	8/9	88.9%
M.Krawczuk	Emsworth B	7/8	87.5%
A.Likhoded	Chichester B	6/7	85.7%

#### Ruth Rose Cup

Name	Club	Score	Bonus	Total
J.H.Jones	Gosport A	12/14	+9	94.7
J.R.Wilkinson	Gosport	6½/10	+5	70.0
R.Smith	Emsworth	3½/6	+1	59.3

### Games

On the Web site ([www.HampshireChess.co.uk](http://www.HampshireChess.co.uk)), I've been asking for games by Hampshire players, either against strong, or titled opposition. Here is a game by a Famous Hampshire player.

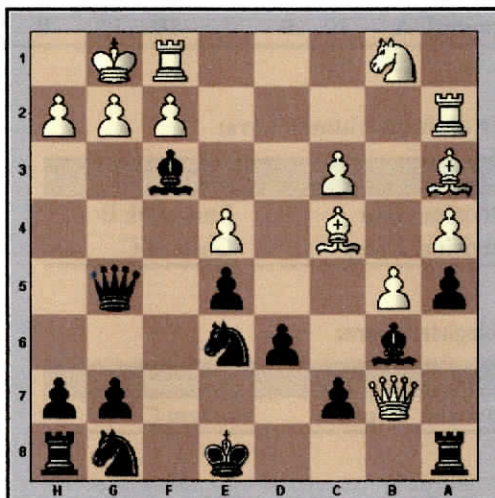
This game is not current and you may not have heard of the winner, Arthur Brameld has supplied the following for those who don't know:

*WH (Wilf) Pratten was one of the strongest chess players ever produced by Hampshire. He was British Boys champion in the early part of the 20th Century and, if he had not had to work to earn a living, it is contended that he could have gone on to much greater things in chess, both nationally and internationally. The following game against Maczynski at Portsmouth 1948 is known as the "English Immortal"*

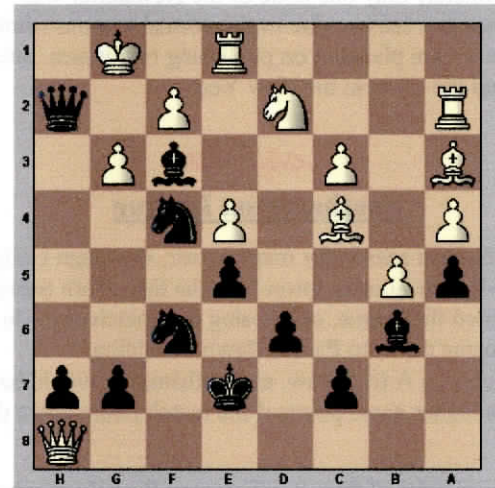
Maczynski - Pratten,W [C53]

Portsmouth, 1948

1.e4 e5 2.Nf3 Nc6 3.Bc4 Bc5 4.c3 Qe7 5.0-0 d6 6.d4 Bb6 7.b4 Bg4 8.a4 a5 9.b5 Nd8 10.Ba3 f6 11.Ra2 Ne6 12.dxe5 fxe5 13.Qd5 Bxf3 14.Qxb7 Qg5



This is the start of a fantastic combination. Whether it's sound or not, is up to debate, but this must have been difficult to face. 15.Qxa8+ Ke7 16.g3 Nf4 17.Re1 Qh5 18.Nd2 This natural move is a mistake. [18.Bxd6+!] 18...Nf6 19.Qxh8 Now after sacrificing both Rooks, black gives up the Queen as well!! 19...Qxh2+ (see diagram) 20.Kxh2 Ng4+ 21.Kg1 Nh3+ 22.Kf1 Nh2# An extremely pretty finish. 0-1



If you want to see more games by Wilf Pratten and other Hampshire Players, they can be found on the Hampshire Web Site.

### Hampshire Congress

Last year's Hampshire Individual Championship was a great success, with increased numbers and prizes. The winner of the tournament was Thomas Rendle and Dominic Tunks retained the Hampshire Individual Title.

This year's tournament is again being held at Eastleigh College, which is an excellent venue, with good lighting and plenty of space. It is also within walking distance of Eastleigh Railway station.

The tournament is being held **Friday 1<sup>st</sup> November to Sunday 3<sup>rd</sup> November 2002** and the entry price is £16 for the Open and £13 for the U125 (if entries are received before 28<sup>th</sup> October).

Further details and entry forms can be obtained from Malcolm Clarke on 023 80 615903.

### Contributions

If anyone would like to publish an article, either for the newsletter, or the Web site, please supply by e-mail or post.

Graham Stuart  
1 Prospect Cottage  
The Drove  
Blackfield  
Southampton  
SO45 1XB

G.B.Stuart@btinternet.com

[WWW.HampshireChess.co.uk](http://WWW.HampshireChess.co.uk)