

Wheeler

Westward Ho!

The Official Magazine

of the

West of England Chess Union



Autumn 1995

West of England Chess Union

Officers 1995/96

Office	Name & address	
President:	Richard W. Rendell, The Tin Cottage, Blount's Nursery, Calne. Wiltshire	01249-822489
Deputy President:	Adrian D. Rookes, 6, Milton Close, Weymouth. DT4 7NB	01305-774044
Hon. Life Vice Presidents	Ken Bloodworth; Mrs. Joan Parker	
Vice Presidents	E. I. S. Biddick; Mrs. R. M. Bruce; A. C. Brown; A. W. Busby; P. H. Clarke; J. E. Fewkes; A. S. Hollis; D. C. Jarrett; F. C. Kingdon; P. L. Marshall; R. O. Powis; E. G. Walker; L. T. Walker; L. C. Walters.	
General Secretary:	Bob Jones, Keverel Lodge, 40, Phillipps Avenue, Exmouth. EX8 3HZ	01395-223340 (including fax)
Treasurer:	Jim Fewkes, 8, Mildmay Drive, Queen Camel, Yeovil. BA22 7NZ	01935-850719
Grading Officer:	Jim Fewkes (as above)	
Congress Secretary:	Ian Biddick, 132, Milton Road, Yate. Bristol BS17 5ET	0117-986-3568
Junior Secretary:	Richard Rendell, (as above)	
Fixtures Secretary:	Frank Kingdon, 6, Blenheim Road, Weymouth. DT3 5AZ	01305-812237
B.C.F. Delegate:	David Woodruff, 14, Broadlands Avenue, Keynsham, Bristol. BS18 2DU	0117-986-2301
Auditor:	C. E. Winch, 9c, Southwoods, Yeovil. BA20 2QQ	01935-74269

Council Delegates:

County	Executive Delegate	Council Delegate
Cornwall	Roger Grime	Ian George
Devon	Ivor Annetts	Bob Jones
Dorset	Adrian Rookes	Paul Foster
Gloucestershire	Phillip Meade	
Hampshire	Stuart Dean	Arthur Brameld
Somerset	David Woodruffe	M Chandler
Wiltshire	Richard Haydon	Danny O'Byrne
Bristol League	D. O. Collier	R. J. Palmer

Editorial

Welcome back to Westward Ho! after a five year absence! For those who may be new to either the area or the game, Westward Ho! has been the flagship publication of the West of England Chess Union since the earliest days of the Union in the late forties, although its format has varied according to the whims or reprographic facilities of whoever the current editor might be at the time.

As far as I can ascertain, it started as the report on the annual West of England Congress, and Ernie Walker of Weston-Super-Mare played a great part in getting it off the ground in the fifties.

Later, a single-sheet newsletter was added, and by 1971, Tony Barnes of Cheltenham was producing the 79th edition. Perhaps the most dramatic development in the magazine's history took place when, in 1977, the North Devon businessman, Ralph Newman, took over from Derek Bond. Ralph, greatly helped by Joan Parker, produced three publications a year, each of about 24 pages, until his sudden death in 1984, while still President of the Union. The pattern of the three issues was that the first of the season consisted mostly of the new Grading List, the second, in late Spring, was an End-of-Season affair, and the third, in the Summer, was devoted mostly to details of the WECU Congress

After Ralph's death, Ken Derrick of Bristol took over as a stop-gap, until our current President, Richard Rendell, took it on as an independent publication in 1987. Richard maintained the same high standard of reporting, until the extent of his commitments, coupled with a career change, made it impossible for him to continue, and it ground to a halt in 1990.

Since then little has happened until, perhaps foolishly, I offered my services at a recent Executive Meeting. Richard has transferred to me enough from the old

Westward Ho! account to ensure that at least two more editions will come out, and those who subscribed to the last edition, and are owed two more magazines, can claim them free of further charge. Others can, of course, buy in at the current rate.

While I almost certainly have superior desk-top publishing facilities to my predecessors, and I hope this is reflected in the look and feel of this new issue, I can in no way claim to be their equal when it comes to playing ability and contacts throughout the seven counties. While playing and analytical ability can to some extent be offset, there is no substitute for knowing who to lean on for good "copy", and to this extent, if Westward Ho! is to survive and prosper I will need the willing co-operation of contributors from all counties.

This problem was undoubtedly a factor in the magazine's demise in 1990; Richard's issues were full of desperate appeals for suitable material. Please may I appeal again to all counties to ensure that material from their particular area is being fed through to the Westward Ho! Editor.

Don't leave it to chance. Set up a line of communication to ensure it happens. If necessary, make this an item on the agenda of your next County meeting.

Please send or fax all material to:-

Keverel Lodge,
40, Phillipps Avenue,
EXMOUTH.
Devon.
EX8 3HZ
☎ & Fax: 01395-223340

Having said all that, I must express much gratitude to all those individuals who have responded so well for this edition, which I hope you will enjoy.

Bob Jones

W.E.C.U. Inter-County Competitions 1994/95

Harold Meek Competition

	Corn	Devon	Dorset	Glos	Hants	Soms	Wilts	Pts
Cornwall	XX	6	6	7	3½	6½	8	1
Devon	10	XX	9½	11	7	13	9	10
Dorset	10	6½	XX	9	5	10½	9	8
Glos	9	5	7	XX	4½	6½	5	2
Hampshire	12½	9	11	11½	XX	12½	12½	12
Somerset	9½	3	5½	9½	3½	XX	3	4
Wiltshire	8	7	7	11	3½	13	XX	5

Wayling Cup Competition

	Corn	Devon	Dorset	Glos	Hants	Soms	Wilts	Pts
Cornwall	XX	3	1	0	1	1	16	2
Devon	13	XX	10½	11½	5½	10	11½	10
Dorset	15	5½	XX	7	10	5½	11½	6
Glos	16	4½	9	XX	6	9	9	8
Hampshire	15	10½	6	10	XX	12½	16	10
Somerset	15	6	10½	7	3½	XX	6½	4
Wiltshire	0	4½	4½	7	0	9½	XX	2

Union qualifiers for the Final stages of the Counties Championships were as follows:

		Champion	Runner-Up
Division I	Open	Hampshire	Devon
Division II	Under 175	Hampshire	Only 1 entry allowed
Division III	Under 150	Hampshire	Devon
Division IV	Under 125	no entries	--
Minor Counties		Dorset	Gloucestershire

In the Open Section, Hampshire got as far as the Semi-Finals, played in London on June 6th, when they met the eventual Champions Cambridgeshire. Hants were perhaps a little unlucky to be edged out 8½ - 7½, and as their opponents only won in the Final on Board Count, Hampshire must feel that with a little more "rub of the green", they could have been National Champions.

Devon met Warwickshire at Bristol in the Quarter-Finals of the Open, and they too were far from out-classed. The match was not decided until the last few minutes of extra time, when three hitherto even positions fell away from the Westcountry representatives. Your Editor throwing away a winning position on Board 16 didn't help either.

Ironically, Devon also met Warwickshire in the Semi-Final of the Under 150 competition, but again the Midland team edged them out, winning 9 - 7.

Counties Championship - Open
Semi-Final

Caambridge			Hampshire
A.J. Mestel (w)	1	0	J.R.Poulton
J. F. Parker	½	½	R. M. Webb
M. J. Turner	1	0	A. R. Corbett
W. R. Hartston	1	0	R. Abayaekera
G. Burgess	1	0	I.D.Thompson
A. J. Cohen	0	1	C. F. Morris
E. N. Holland	0	1	D. R. Neil
D.D.A.Lawson	1	0	K. D. Gregory
M. H. Thornton	1	0	M.NAnderton
B. Hague	0	1	A.F. Brameld
N.D.J.Noden	½	½	R.C.Noyce
D.S.Boyle	0	1	K.G.Coates
R.M.Little	½	½	M.J.Yeo
P.N.Best	0	1	G.H.Bennett
P.B.Faulkener	0	1	D. Tunks
K. Bueker	1	0	W. Purkiss
Total	8½	7½	

Counties Championship - Under 150
Semi-Final

Warwicks			Devon
R. Wallman	0	1	J. Ridolfo
L. Collier	½	½	M. Leigh
default	0	1	I Taggart
R. Jones	1	0	D. Hodge
S. Smith	0	1	R. Carpenter
R. Chillcott	1	0	P. Carpenter
R. Reynolds	½	½	I.S.Annetts
E. Lee	1	0	M. V. Abbot
S. May	1	0	E. Walton
J. Coleman	1	0	S. Webb
D. Reeves	1	0	K.Bloodworth
R. Whateley	1	0	J. G. Gorodi
B. Ades	0	1	C. Barnett
T. Russell	0	1	P. Scott
S. Jones	1	0	M. Jolly
C. Lund-Yates	0	1	D. Rudall
Total	9	7	

◆

New Award?!

The Westward Ho! County Player of the Year Award

The Editor is considering initiating a new award, open to all players who play for their county. At the end of each season, each county would nominate one player for consideration, sending in details of their score, number of matches played and any other relevant information that may have a bearing. All nominees would be listed in Westward Ho! and the player having the best credentials would be awarded a commemorative certificate which may be awarded at the Council Meeting.

Apart from actual score, other factors could be taken into consideration, for example board number and age. Thus, 5/6 pts would be deemed better than 4/5; 5/5 on Board 1 would be better than the same score on Board 30; and a good score by a 10 year old, or a 90 year old for that matter, would be looked on more favourably, for the purposes of this exercise, than the same score by a 30 year old.

The Editor's decision would be final, but he would try to balance up all the relevant factors. Certainly, the winner will have a truly exceptional record for that season. Hopefully, also, the award may stimulate a small grain of interest in playing for the county, an interest which all match captains will agree has been on the wane in recent years. At the moment this is just an

idea, but if it receives sufficient support from the counties, it could well get under way fairly soon. Please write in to let me know what you think of the idea. Alternative ideas also welcome.



W.E.C.U. Junior Competitions 1995

Junior Jamboree: Ladymead School, Taunton 11.2.95.

(1) Under 18 Open Team Championship:

		Pts/12	
1st	Devon	8	Qualify for National Finals
2nd	Somerset	7	Qualify for Minor Finals
3rd	Hampshire	6	
4th=	Gloucestershire	4	
4th=	Wiltshire	4	

(2) Under 18 Girls 1st Team Championship:

		Pts/6	
1st	Devon	4	Qualify for National Finals
2nd	Hampshire	4	
3rd	Wiltshire	2	Qualify for Minor Finals
4th	Somerset	1	

(3) Under 18 Girls 2nd Team Championship:

		Pts/6	
1st	Somerset	4	Qualify for National Finals
2nd	Devon	2	Qualify for Minor Finals

(4) Under 14 'A' Team Championship:

		Pts/16	
1st	Devon	14	
2nd	Somerset	13	
3rd	Gloucestershire	8	
4th=	Wiltshire	5	
4th=	Hampshire	5	
6th	Dorset	1	

(5) **Under 14 'B' Team Championship:**

		Pts/16	
1st	Somerset	13	
2nd	Devon	10	
3rd	Wiltshire		

Individual Junior Championships:

(1) **Open Championships:** Greendown School, Swindon. 25/26th Feb. 1995

Division	Winner	County	Pts
Under 18	James Cobb	Wilts	4/5
Under 16	Charles Cobb	Wilts	4/5
Under 14	Richard Colfer	Bristol	3/5
Under 12	Matthew Brierley	Somerset	5/6
Under 10	Philip Hamilton	Wilts	5/6
	Robert White	Glos	5/6
Under 8	Philip Hayward	Wilts	5/6

(2) **Girls Championships:** St. Swithun's School, Winchester. 29.1.95.

Division	Winner	County	Pts
Under 18	Cheryl Driver	Hants	5/5
Under 16	Emmeline Dobson	Hants	2/5
Under 14	Jessica Welsh	Hants	4/5
Under 12	Dominique Pierre-Louis	Devon	5/6
	Jennifer Chase	Wilts	5/6
	Jane Okas	Hants	5/6
Under 10	Jodie Mills	Devon	5/6
Under 8	Alice Davison	Hants	5/6
	Naomi Scott	Devon	5/6

West of England Congress 1995

A Blow-by-Blow Account of How the West Was Won by Richard Rendell

Major Prizewinners were as follows:

	Name	Grade	Club	Pts
	Open			
1st	Ian M. GEORGE	176	Camborne	5½
2nd=	Michael E. BINKS	197	Downend & Fishponds	5
	Jack RUDD	191	Yeovil	5
	Ian D THOMPSON	202	Camberley	5
	Gavin WALL	211	Richmond	5
	Major (<160)			
1st	Dr. John N. McDONALD	U/G	Frimley	5½
2nd=	Brian H. BOOMSMA	155	Paignton Palace	5
	Frank PITTMAN	145	Weymouth	
	Minor (<125)			
1st	Richard PINDER	106	Yeovil	6
2nd	J. ROSSEINSKY	118	Exeter	5½
3rd=	R. KAHAR	U/G	Musketeers	5
	Stuart MILLS	122	Nailsea	5

The 50th West of England Chess Union Congress took place this year at the Rembrandt Hotel in Weymouth. This was the first time the event had been held at the Rembrandt, as the usual venue, the Pavilion Theatre complex was unavailable for the whole weekend. This year, the event attracted 118 players, a much higher figure than usual for Weymouth. Of these, 31 entered the Championship, about the same number as previous years. Alas, although many of the players would have said "Yippeel!", last year's winner, Stuart Conquest was unable to defend his title. Consequently, the section was much more open and resulted in a very tight competition. However, despite this, there were no less than 75 wins out of the 103 games played, a very high ratio.

Round 1:

A good round for all the top seeds, who all won, with the exception of Haydon who lost a piece when over-pressing against Egginton and duly lost. Headlong was held to a draw by Kevin House in a Grob.

White: F. N. McLeod

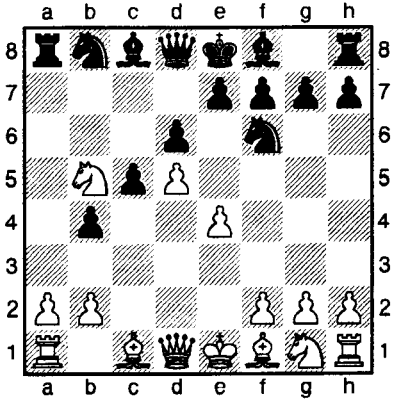
Black: M. J. Simons

1. d4 Nf6
2. c4 c5
3. d5 b5
4. cxb5 a6
5. Nc3

This is the sort of opening Martin Simons thrives on. 5Nc3 is one of the sharper lines in the Benko and I feel McLeod is unwise

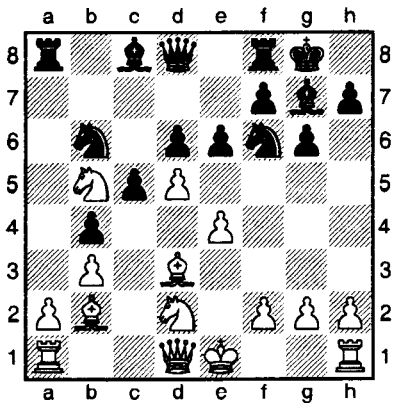
moving away from the main line as he falls into Black's hands.

- 5. axb5
- 6. e4 b4
- 7. Nb5 d6



Not 7...Nxe4 as this loses to 8. Qe2. It is now essential for White to get in e5, otherwise the poor position of his knight becomes a problem. Best now is 8. Nf3 or Bf4, preparing e5. Unfortunately, White fails to play either and is very quickly punished.

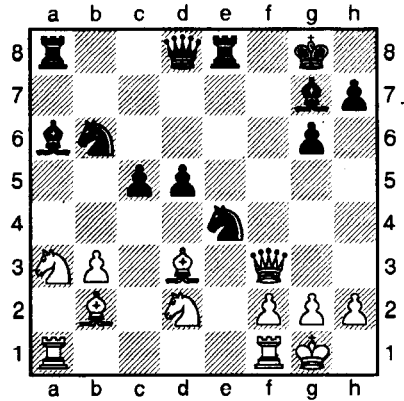
- 8. Bc4 Nbd7
- 9. Nf3 Nb6
- 10. Bd3 g6
- 11. b3 Bg7
- 12. Bb2 0-0
- 13. Nd2 e6



With this move Black opens up the position to his advantage.

- 14. dxe6 fxe6
- 15. 0-0 Ba6
- 16. Qe2 d5

- 17. exd5 exd5
- 18. a4 bxa3
- 19. Nxa3 Re8
- 20. Qf3 Ne4



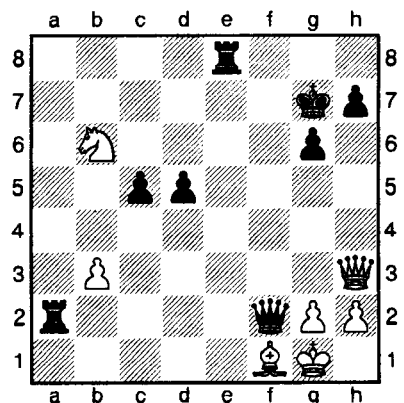
This is a very strong move, threatening the unprotected bishop on b2 and knight on d2. If White takes on e4, dxe4 wins at least a piece.

- 21. Bxg7 Nxd2
- 22. Qh3 Kxg7
- 23. Bxa6 Nxf1
- 24. Bxf1

Hence Black wins the exchange. However, more importantly, he retains his positional advantage which he quickly turns to a win.

- 24. Qf6
- 25. Ra2 Ra7
- 26. Nc4 Rxa2
- 27. Nxb6 Qxf2+

0 - 1



Final position.

Round 2:

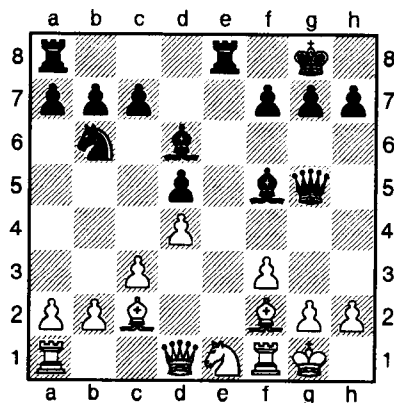
Another round with a high proportion of wins, finishing with no less than 5 players on 100%; namely Wall (who beat Rudd), Thompson (who beat George), Zeidler (beat Hopkins), Simons (beat Egginton) and Phillips beating Chapman thus:-

White: P. Chapman

Black: R. Phillips

50th W.E.C.U. Congress 1995 (Rd. 2)

- | | |
|-----------|-------|
| 1. d4 | Nf6 |
| 2. Nc3 | d5 |
| 3. e4 | dx e4 |
| 4. f3 | e3 |
| 5. Bxe3 | e6 |
| 6. Bc4 | Nbd7 |
| 7. Nge2 | Be7 |
| 8. 0-0 | 0-0 |
| 9. Nf4 | Nb6 |
| 10. Bb3 | Nfd5 |
| 11. Ncxd5 | exd5 |
| 12. Nd3 | Bf5 |
| 13. c3 | Re8 |
| 14. Bf2 | Bd6 |
| 15. Bc2 | Qg5 |
| 16. Ne1 | |



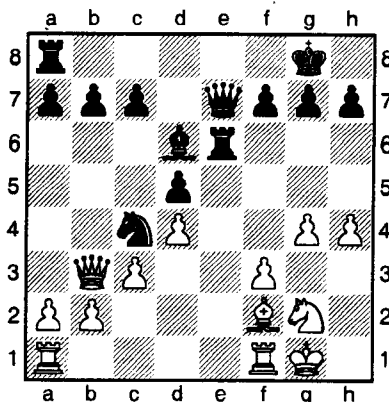
Black with his 15th move has started to take the initiative. White, meanwhile, continues to move his King's knight - this is its 4th move - and whilst e4 is a good defensive post for it, it also hampers coordination. Furthermore, it continues its

journey in 3 moves time, where it remains for the rest of the game.

- | | |
|----------|---------------------|
| 16. | Re6 |
| 17. Bxf5 | Qxf5 |
| 18. g4 | Qg5 |
| 19. Ng2 | Nc4 |
| 20. h4 | White has been left |

with only a King-side advance as active play, but this weakens his King's defence, especially on the black squares. Black's pieces still aim at the White King and the Knight on c4 is now very powerful.

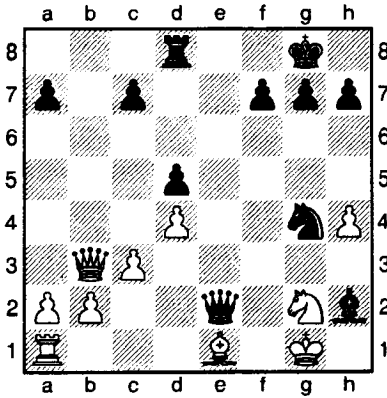
- | | |
|-----|------|
| 20. | Qe7 |
| 21. | Qb3? |



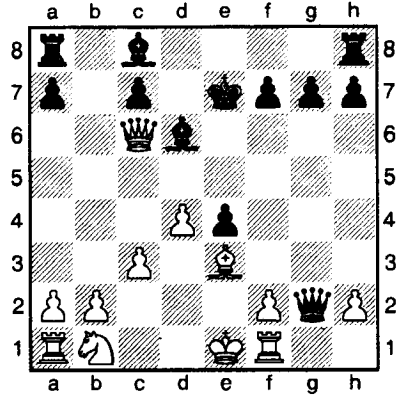
A losing move in a bad position. Whilst threatening b7, hence getting out of the fork, White cannot defend f3. 21. b3 Nb2 22. Qd2 Re2 23. Qg5 ... is his best continuation, although 23...Qxg5 24. hxg5 Nd3 25 Bh4 still leaves him with a very difficult position.

- | | |
|----------|-------|
| 21. | Nd2 |
| 22. Qxb7 | Rd8 |
| 23. Rfd1 | Nxf3+ |
| 24. Kf1 | Nh2+ |
| 25. Kg1 | Nxg4 |
| 26. Rd2 | Re2 |
| 27. Be1 | Qe4 |
| 28. Rxe2 | Qxe2 |
| 29. Qb3 | Bh2+ |

0 - 1



Final position.



Round 3

Wall moved into the lead on his own by beating Zeidler, whilst Phillips held Thompson to a draw, and Binks beat Simons when Simons had to give up a piece to save his Queen in a complicated middle game, stemming from another Benko Gambit. Monk joined Phillips, Thompson and Binks on 2.5 by beating Sellars.

White: S. P. Zeidler
Black: G. Wall
 50th W.E.C.U. Congress 1995 (Rd. 3)

- | | |
|-----------|-------|
| 1. e4 | e5 |
| 2. Nf3 | Nc6 |
| 3. c3 | d5 |
| 4. Bb5 | dxex4 |
| 5. Nxe5 | Qg5! |
| 6. d4 | Qxg2 |
| 7. Rf1 | Bd6 |
| 8. Qa4 | Nge7 |
| 9. Nxc6 | bxex6 |
| 10. Bxc6+ | Nxc6 |
| 11. Qxc6+ | Ke7 |
| 12. Be3 | |

[12.Qxa8 Qxf1+ 13.Kxf1 Bh3+ 14.Kg1 Rxa8] 12...Bd7

- | | |
|-----------|-------|
| 13. Qd5 | Be6 |
| 14. Qg5+ | Qxg5 |
| 15. Bxg5+ | f6 |
| 16. Be3 | Bxh2 |
| 17. Nd2 | f5 |
| 18. Rh1 | Bd6 |
| 19. c4 | c6 |
| 20. Bg5+ | Kf7 |
| 21. Bh4 | h6 |
| 22. Ke2 | g5 |
| 23. Bg3 | f4 |
| 24. Bh2 | Bb4 |
| 25. b3 | Bg4+ |
| 26. f3 | exf3+ |
| 27. Nxf3 | Rae8+ |
| 28. Kf2 | Bxf3 |
| 29. Kxf3 | Re3+ |
| 30. Kf2 | g4 |
| 31. Bg1 | Rhe8 |
| 32. Rxh6 | Re2+ |
| 33. Kf1 | g3 |

0-1

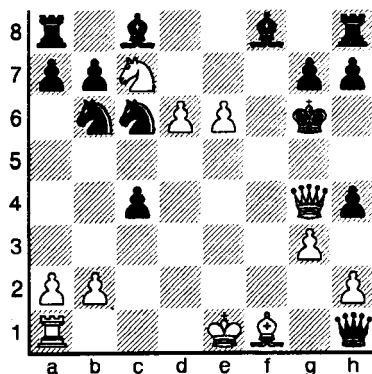
Round 4:

The following game seems highly entertaining, with White well down on material, bailing out with a perpetual check. However, the two players are old friends and this is a known book draw. It was sad they were not prepared to fight harder, and by the end of the tournament both players paid the penalty - especially Phillips.

White: G. Wall
 Black: R. Phillips

50th W.E.C.U. Congress 1995 (Rd. 4)

- | | |
|---------|-------|
| 1. e4 | Nf6 |
| 2. e5 | Nd5 |
| 3. c4 | Nb6 |
| 4. d4 | d6 |
| 5. f4 | dx e5 |
| 6. fxe5 | c5 |
| 7. d5 | e6 |
| 8. Nc3 | exd5 |
| 9. cxd5 | c4 |
| 10. d6 | Nc6 |
| 11. Nb5 | Qh4+ |
| 12. g3 | Qe4+ |
| 13. Qe2 | Qxh1 |

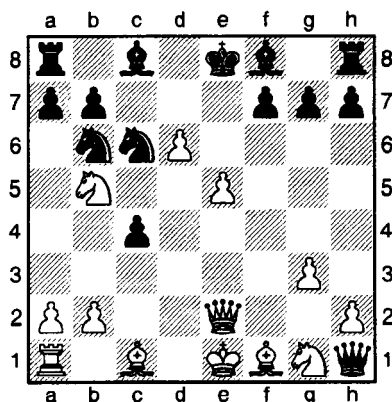


Final position

½-½

Round 5:

In Round 5 Binks (white) comfortably held Wall to a draw, enabling Thompson (who beat Rudd) and Zeidler (who beat Monk) to move into equal first, with Wall on 4 points. Phillips, who could only draw with Headlong, and Binks were joined on 3.5 by George, who beat Simons.



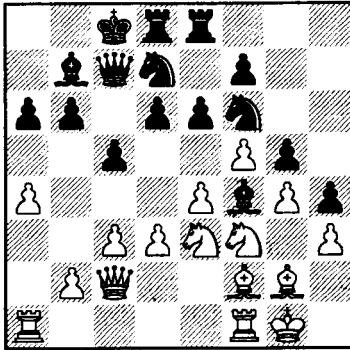
White: D. C. Pugh
 Black: S. Pollyn

WECU Championship (Rd 5), 1995

- | | |
|--|------|
| 14. Bg5 | f6 |
| [14...Qxg1? 15.Nc7+ Kd7 16.Qg4+ f5 17.Qxf5 mate] | |
| 15. Nc7+ | Kf7 |
| 16. e6+ | Kg6 |
| 17. Nf3 | fxg5 |
| 18. Nh4+ | gxh4 |
| 19. Qg4+ | Kf6 |
| 20. Qf4+ | Kg6 |
| 21. Qg4+ | |

- | | |
|---------|-------|
| 1. Nc3 | c5 |
| 2. e4 | d6 |
| 3. g3 | e6 |
| 4. Bg2 | Nd7 |
| 5. d3 | Ngf6 |
| 6. f4 | a6 |
| 7. h3 | Be7 |
| 8. Nf3 | Qc7 |
| 9. 0-0 | h6 |
| 10. a4 | b6 |
| 11. Be3 | Bb7 |
| 12. Bf2 | 0-0-0 |
| 13. Qe2 | Rhe8 |
| 14. Nd1 | Nh7 |
| 15. Ne3 | g5 |
| 16. f5 | Bf6 |
| 17. c3 | h5 |
| 18. Nh2 | h4 |
| 19. g4 | Be5 |

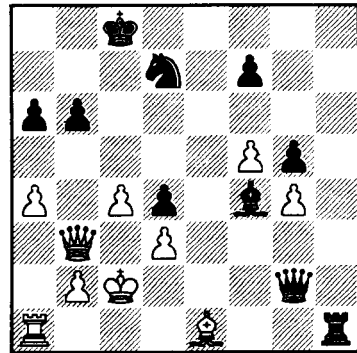
20. Nf3 Bf4
 21. Qc2 Nhf6



28. Bh1 h2+
 29. Kf1 Bxf3
 30. Bxf3 h1Q+
 31. Bxh1 Rxh1+
 32. Ke2 Re8+
 33. Kd1 Qc6
 34. Nxd4 cxd4
 35. Kc2 Rexe1
 36. Bxe1 Qg2+

This move looks rather innocuous. However, should White move the knight from e3 then the sacrifice on g4 would be interesting, especially as Black can swing both his rooks from the centre to open lines on the Kingside.

22. Rfe1 Rh8
 23. Qb3 d5
 24. exd5 exd5
 25. c4 d4
 26. Nc2



Final position
 0-1

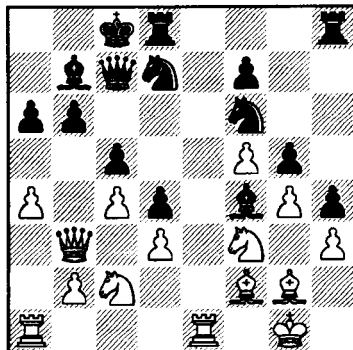
The last few moves have resulted in the knight no longer defending g4, hence allowing the sacrifice. Now Black's pieces suddenly pour through the breaches with alarming speed. The last few moves have resulted in the knight no longer defending g4, hence allowing the sacrifice. Now Black's pieces suddenly pour through the breaches with alarming speed.

Round 6:

Thompson moved into the sole lead on 5 points when he beat Zeidler, and Wall lost to George. George was joined in second= on 4½ points by Phillips who beat Haydon. This left Wall and Zeidler on 4 points, who were joined by Binks (drew with Robinson and Rudd (who beat Monk).

White: I. D. Thompson
Black: S. P. Zeidler

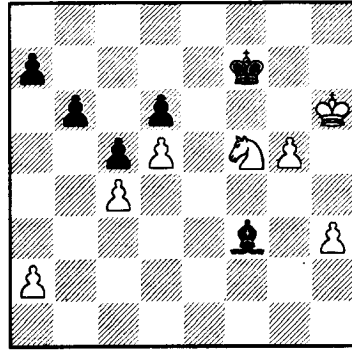
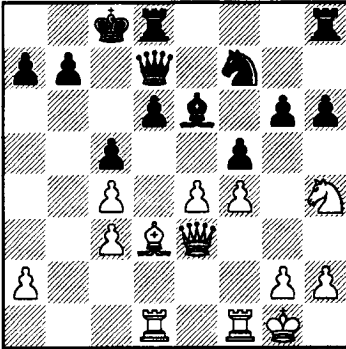
WECU Championship Rd 6, 1995



26...Nxf4
 27. hxg4 h3

1. c4 f5
 2. Nc3 Nf6
 3. d4 g6
 4. Bg5 Bg7
 5. Qd2 Nc6
 6. Rd1 h6
 7. Bxf6 Bxf6
 8. d5 Ne5

- | | |
|----------|-------|
| 9. e4 | d6 |
| 10. f4 | Nf7 |
| 11. Nf3 | e5 |
| 12. dxe6 | Bxe6 |
| 13. Bd3 | Qd7 |
| 14. 0-0 | 0-0-0 |
| 15. Qe3 | Bxc3 |
| 16. bxc3 | c5 |
| 17. Nh4 | |



Final position
1-0

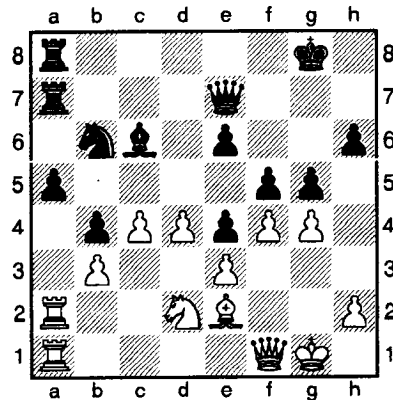
White: G. Wall
Black: I. M. George

WECU Championship (Rd. 6), 1995

At this stage of the game the position is even with White holding a pawn majority in the centre against Black's majority of the Kingside. White also has pressure on the a-file, although this is limited. Now White forces the issue on the King-side leaving him with a connected passed pawn in the centre. However, Black is well compensated with pressure down the g-file and an active knight.

- | | |
|-----------|------|
| 17 ... | fxe4 |
| 18. Qxe4 | Rde8 |
| 19. Qxg6 | Rhg8 |
| 20. Qf6 | Bg4 |
| 21. Rde1 | Rxe1 |
| 22. Rxe1 | Re8 |
| 23. Rxe8+ | Qxe8 |
| 24. Kf2 | Kc7 |
| 25. Ng6 | Qe6 |
| 26. Qxe6 | Bxe6 |
| 27. Nf8 | Bg4 |
| 28. h3 | Bd1 |
| 29. g4 | Kd8 |
| 30. Ng6 | Ke8 |
| 31. Kg3 | Nd8 |
| 32. Kh4 | Kf7 |
| 33. Kh5 | Kg7 |
| 34. Ne7 | Ne6 |
| 35. Nf5+ | Kf6 |
| 36. Kxh6 | Nxf4 |
| 37. g5+ | Kf7 |
| 38. Be4 | b6 |
| 39. Bd5+ | Nxd5 |
| 40. cxd5 | Bf3 |
| 41. c4 | |

Position after 26 moves

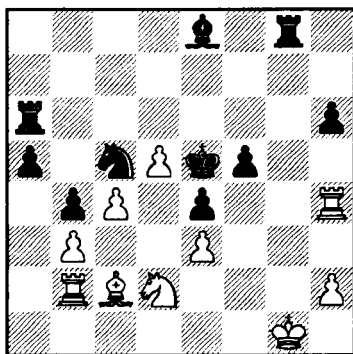


- | | |
|---------|-------|
| 27.gxf5 | exf5 |
| 28.d5 | Be8 |
| 29.fxg5 | Qxg5+ |

- 30. Qg2 Nd7
- 31. Rf1 Bg6
- 32. Qg3 Nc5
- 33. Rf2 Kg7
- 34. Rg2 Qxg3
- 35. Rxg3 Kf6

Although Black has been unable to reunite his Kingside pawns, he has now obtained the initiative with active King and knight, to be followed shortly by rooks.

- 36. Bd1 Ra6
- 37. Rh3 Rh8
- 38. Bc2 Ke5
- 39. Rh4 Be8
- 40. Rb2 Rg8+



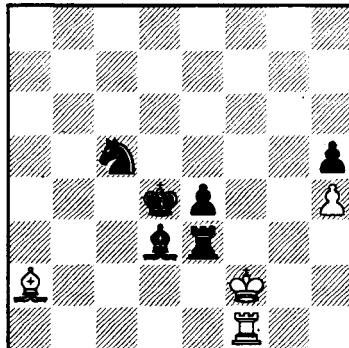
The time control is now reached and White is faced with great problems whilst Black's position plays itself.

- 41. Kf2 Rag6
- 42. Ke1 Rg1+
- 43. Nf1 h5
- 44. Rf4 a4
- 45. bxa4 Bxa4

46. Bb1 The bishop cannot be taken as 46 ... Nd3+ forks king & rook. Furthermore the King can be forced on to d1, whereupon the knight collects the bishop as well to a fork on b2. Now the bishop enters White's position.

- 46 ...Bb3
- 47. Rbf2 R8g5
- 48. h4 Rg6
- 49. Rxf5+ Kd6
- 50. Rb2 R6g3
- 51. Rf6+ Ke7
- 52. Rf4 Bxc4
- 53. Rxb4 Bd3
- 54. d6+ Kxd6

- 55. Rd4+ Ke5
- 56. Ba2 Rxf1+
- 57. Rxf1 Rxe3+
- 58. Kf2 Kxd4



and White lost on time, but he is lost anyway.

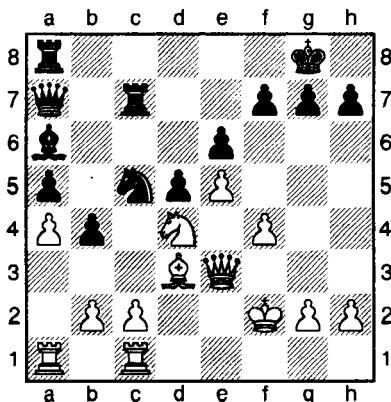
0-1

Round 7:

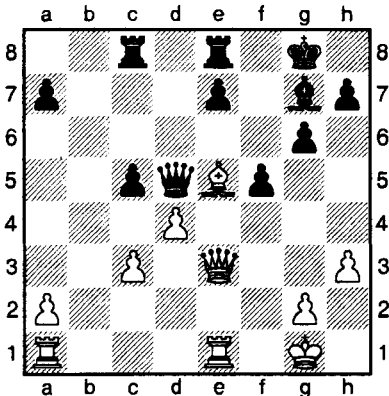
As Thompson had already played his two nearest rivals (George & Phillips), he had to play Black against the highest graded player available on 4 points. Unfortunately for him, this was the top seed, Wall. George, meanwhile, played White against Phillips.

After 23 moves the respective positions were:-

Wall v Thompson



George v. Phillips.

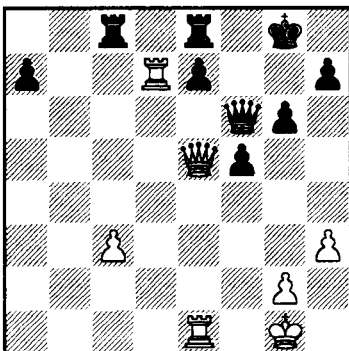


At this stage the Wall/Thompson position was reasonably even, although White stood a little better, whilst George was a pawn down with minimal compensation. Hence, it appeared that if Wall could beat Thompson, he would do his mate Phillips a great favour, as a win also for Phillips would leave him WECU Champion.

The George v Phillips game continued as follows from the above position:

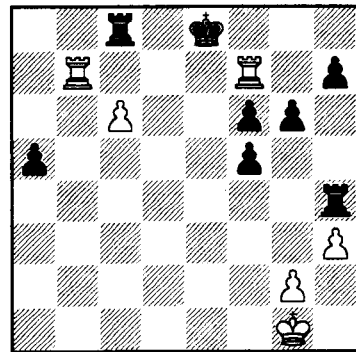
White: I. M. George
Black: R. Phillips

- | | |
|----------|-------|
| 24. Rad1 | cx d4 |
| 25. Bxd4 | Qxa2 |
| 26. Bxg7 | Kxg7 |
| 27. Qe5+ | Kg8 |
| 28. Rd5 | Qa6 |
| 29. Rd7 | Qf6 |



Black has won a second pawn and has stopped his opponent from obtaining any perpetual check. however, instead of sitting tight for the time control at move 40 he allows a swap of queens. Perhaps he thought the ending was trivially won, but rooks & pawns endings are difficult to win. This gives White a glimmer of hope.

- | | |
|----------|---|
| 30. Qxf6 | exf6 |
| 31. Rb1 | Rb8 |
| 32. Ra1 | Ra8 |
| 33. Rb1 | Red8 |
| 34. Re7 | Re8 |
| 35. Rd7 | Still 6 moves to the time control and Black, with minimal time left, cannot afford to repeat the position. At this stage, George offered a draw which Phillips declined. 35...Re4 |
| 36. Rbb7 | Rh4 |
| 37. c4 | a5 |
| 38. c5 | Rc8 |
| 39. c6 | Kf8 |
| 40. Rf7+ | Ke8?? |



At last the time control is reached, but unfortunately for Black, White has a forced win. 40 Kg8 would have provided at least a draw.

- | | |
|-----------|-----|
| 41. Rbe7+ | Kd8 |
| 42. c7+ | |

1-0

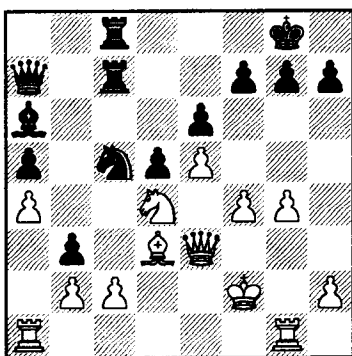
White: G. Wall
Black: I. D. Thompson

WECU Championship (Rd. 7), 1995

from the given position.

24. g4 Rac8

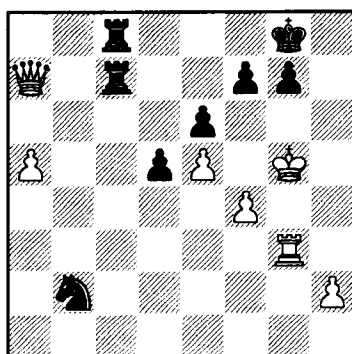
25. Rg1 b3?! This move unsettles the whole position and a mass trade-off.



26. Bxa6 Qxa6
 27. cxb3 Nd3+
 28. Kg3 Nxb2
 29. Nb5 Rc2
 30. Rac1 Qc6? This allows

White to win the queen for rook & knight

31. Nd4 Rxc1
 32. Nxc6 R1xc6
 33. Qa7 Rc3+
 34. Kh4 Rxb3
 35. Qxa5 h6
 36. Rg3 Rbb8
 37. g5 hxg5+
 38. Kxg5 Rc4
 39. Qa7 Rbc8
 40. a5 R4c7

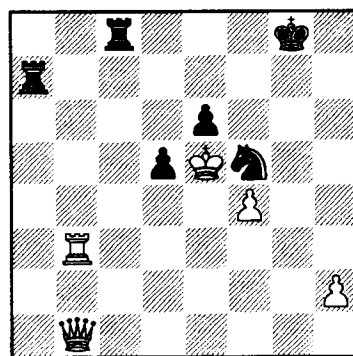


Time control is reached. Both players have a passed pawn to play with, but White's is much stronger. Furthermore, the knight on b2 is totally out of the game. It would appear the title is slipping from Thompson's grasp.

41. Qd4 Nc4
 42. a6 Na5
 43. Ra3 Nc6
 44. Qb6 Na7
 45. Rh3 Rd7

46. Qb1 Suddenly White switches his attack to the King-side. Now if 46... g6; 47. Kf6 and the queen quickly moves in for the kill - via e1 and h4. Hence, Black must play ... 46...f6+

47. exf6 gxf6+
 48. Kxf6 Rf7+
 49. Ke5 Nc6+
 50. Kd6 Ne7
 51. a7 Nf5+
 52. Ke5 Rxa7
 53. Rb3 and Black lost on time.



Final position. 1-0

This left Ian George in sole first place on 5½ points, hence winning his first WECU Championship. Wins for Binks (over Hopkins) and Rudd (over Headlong) enabled them to join Wall and Thompson in joint second place on 5 points. Of course, if Phillips had accepted George's offered draw, this would have left a six-way tie and a major headache for me. Fortunately he didn't.



West of England Championship 1995

No.	Name	Club	Grd	Rd1	Rd2	Rd3	Rd4	Rd5	Rd6	Rd7	Total
1	George, I.M.	Camborne	175	25+	2-	17=	13+	18+	3+	6+	5½
2	Thompson I.D.	Camberley	202	9+	1+	6=	11=	5+	7+	3-	5
3	Wall, G	Richmond	211	23+	5+	7+	6=	4=	1-	2+	5
4	Binks, M. E.	Downend	197	14+	11=	18+	15=	3=	8=	10+	5
5	Rudd, J	Yeovil	191	26+	3-	12+	10+	2-	11+	15+	5
6	Phillips, R	Grendel	199	12+	19+	2=	3=	15=	17+	1-	4½
7	Zeidler, S. P.	Devizes	202	26+	10+	3-	29+	11+	2-	8=	4½
8	Robinson, J. K.	Leicester	179	16=	22+	15=	17=	20+	4=	7=	4½
9	Osborne, D. C.	Grendel	170	2-	17-	28+	19+	26+	15=	18+	4½
10	Hopkins, J. R.	Weymouth	174	27+	7-	21+	5-	16+	29+	4-	4
11	Monk, J. C.	Trowbridge	182	31+	4=	13+	2=	7-	5-	17+	4
12	Goater, K	Southampton	166	6-	27+	5-	21+	24=	20+	13=	4
13	Sellars, M. R.	Horfield	171	bye	16+	11-	1-	25+	24-	12=	4
14	Taylor, G. R.	Gloucester	168	4-	31+	24=	16=	17-	26+	19+	4
15	Headlong, T	Swindon Libraries	194	22=	29+	8=	4=	6=	9=	5-	3½
16	Gosling, B. G	Frome	151	8=	13-	25+	14=	10-	by=	24+	3½
17	Haydon, R	Swindon Libraries	199	21-	9+	1=	8=	14+	6-	11-	3
18	Simons, M	Southbourne	191	30+	21+	4-	20=	1-	by=	9-	3
19	Chapman, P	Yeovil	161	24+	6-	20-	9-	22+	23+	14-	3
20	Lea, E. G.	Supermarine	180	def	28+	19+	18=	8-	12-	21=	3
21	Egginton, D	Nailsea	162	17+	18-	10-	12-	30=	27+	23=	3
22	House, K.C.	Nailsea	165	15=	6-	26-	28=	19-	30+	27+	3
23	Pugh, D. C.	Grendel	174	3-	25=	31+	26=	29-	19-	28+	3
24	House, P.G.	Southampton Uni.	186	19-	26=	14=	30+	12=	13-	16-	2½
25	Biddick, E. I. S.	Hanham	136	1-	23=	16-	27+	13-	28=	26=	2½
26	Taylor, P.J.	Merck	162	7-	24=	22+	23=	9-	14-	25=	2½
27	Rowbottom, D	Grendel	u/g	10-	12-	by+	25-	28=	21-	22-	1½
28	Crisp, S.C.	Oakdale	155	7-	28-	9-	22=	27=	25=	23-	1½
29	Pollyn, S	Weymouth	136	def	15-	30+	7-	23+	10-	-	
30	McLeod, E.N.	Southampton Uni.	152	18-	bye	29-	24-	21=	22-	-	
31	Simms, T. E.	Oakdale	161	11-	14-	23-	-	-	-	-	

A Window On The Past

Desmond Pott, Chairman of Wiltshire County Chess Association, discovers an unsuspected hive of chess activity in sleepy Wiltshire at the turn of the century.

At an end-of-season pub meal in 1990, Richard Rendell, then Chairman of the Wiltshire Association, remarked that there were no County records dated earlier than 1932, when the County Chess Association was revived under the leadership of Canon A. G. Gordon Ross, Swindon Chess Club and President of the B.C.F. 1921 - 38. That led me to look through the records of the Salisbury Chess Club where I found a small batch of press cuttings covering the four months from December 1900, which threw some light on our murky past and make fascinating reading.

The cuttings establish that there was then a flourishing County Association, one report commenting that "Chess has been well-organised in Wiltshire for 10 years, and their county championship tourney, under the able management of Mr. A. Schomberg as hon. secretary, is most successful". Mr. Schomberg was then the regular Board 1 for the Devizes Club and also a very enthusiastic simul-giver: in the four month period alone, he travelled to Calne, Pewsey, Swindon, Calne (again) and Mere, his full record being W37, D16, L17 = 64.3%. One wonders whether he was paid for these displays, at least enough to cover his expenses.

Two county matches are reported, the full score sheet being given for both. Apparently, Wilts, Somerset and Glos. played one another over 16 boards to decide which of them should proceed to the Southern Counties Championship Finals. The first of the reports, dated 23.2.01., records the first-ever victory of Wiltshire over Somerset (by 9½ - 5½) at Trowbridge, and notes that the Bd. 5 result (a draw, making the final score 10 - 6) was not known at the time of going to press because the game had been played at the home of one of the players involved! A week later, Somerset lost to Gloucestershire 5 - 11, but no further details were given.

The crunch match, then, between Wilts and Glos is reported at length - over 12 column inches, 2½ inches wide and very small print - but unfortunately no games or positions were

included. Wilts were strengthened by six new players coming in, (the redoubtable Canon Ross drawing on Bd. 1 incidentally) whereas Glos were weakened by 4 team changes. Nevertheless, Glos emerged victorious by 10 - 6.

Here are some interesting details from the report. The openings played on the various boards were as follows:-

Opening	Boards
Ruy Lopez	1, 3, 6, 8, 9,
Centre Gambit	2
Queen's Gambit	4, 10, 12, 13
Centre Counter Gambit	5
Sicilian	7, 15, 16
Guioco Piano	11
French Defence	14

A certain Miss Rudge, described as the "Lady Champion of the World", had been expected to play for Glos, but did not appear. Does any reader have further information on this lady and her qualifications for assuming this title? Col. Law, who had played on Bd. 2 for Wilts v. Somerset, and lost, was relegated to Bd. 6 because of the team-strengthening, and had to leave the match early to catch a train (!): the game was adjudicated a loss for him.

The match was played at the Imperial Hotel, Clifton, and began at 4.15 p.m., which no doubt reflected the facts that many people, who would today enjoy a 5 day week, then worked on Saturdays to at least midday, and that trains were the usual means of transport between towns. Play was at the rate of 24 moves an hour and clocks were used. There was a break for refreshments at 5.45 and play stopped at 7.45, so it could easily have been 11 o'clock or later before some of the visitors got home.

What about club chess in Wiltshire, you may ask? Well, it seems to have been more vigorous than it is today. The cuttings reveal the existence of 10 clubs - Bradford, Calne, Chippenham, Devizes, Marlborough, Melksham*, Pewsey Vale*, Salisbury, Swindon and Warminster. (* = unaffiliated), with Mere being revived in

addition: there may have been more. Today, there are 9 affiliated clubs, of which two are exclusively junior clubs. When the W.C.C.A. was revived in 1932, there were initially only 3 participating clubs - Malmesbury, Salisbury and Swindon - though there was known to be at least one other club, (Ramsbury)

Not only were there more clubs then, but the average membership was probably greater than it is today. For instance, in 1896/97 the Salisbury Club boasted 33 members, whereas this season it has only 13. There were no juniors or women included in the 33, but the current 13 includes 2 juniors and 2 lady members, evidence of the Victorian belief that "children should be seen and not heard". (I can remember my Grandfather saying that, rather sternly, at a family Sunday lunch in the mid-20s!) and "A woman's place is in the home". How times have changed! Now junior chess is thriving and a highly-organised activity in its own right, whilst women are featuring more and more in the game, as witnessed by the election at a recent Wiltshire A.G.M. of Fenella Cohen as Match Captain for the 1995/96 season. Is this a first for any county?

There was extensive reporting of inter-club matches, both friendlies and cup ties, although no league appears to have existed. One interesting curiosity was that occasionally two games were played between the same two players, presumably with colours reversed in the second game, and both games counting in the match result. A striking feature is the number of clergymen then playing in the county, nine being named, of whom three belonged to the Warminster Club.

The most obvious difference between these reports and the ones we are able to get into the Salisbury Journal today, lies in their length and scope. My earlier comments on the Glos v Wilts match give an idea of the length. The scope is well-illustrated by the report dated 15.12.1900 which opens with Mr. Schomberg's correct score for his simul. v. Swindon, and then goes on to relate that in the North v South correspondence chess match, Mr. Burn had won on top board for the North against Mr. Gunston of Cambridge (1½ - ½) and that Mr. Moore of Manchester had donated a handsome trophy to be competed for by the Northern Counties (asking "Will no one do the same for the South?") The next paragraph relates that the Great Western Railway had

beaten the Midland Railway in a friendly match, and gave the names of all the Swindon Club members who had played for the GWR and their scores. Two full match scores for cup ties followed - Devizes ½; Salisbury 4½ and Warminster 4½ - Bradford ½, and finally the full score was set out of an 18 move game (and the diagrammed final position) played the previous week between two unnamed players in the City of London Tournament. Altogether, nearly 7 inches of a 2½ inch-wide column!

The North v. South correspondence match was continually updated. On 16.02.01. the full match score sheet of Swindon 4.5 v. Paddington 4.5 was given. No, you railway buffs, the great G. J. Churchward did *not* play for Swindon! On 12th January it was announced that Mr. Blackburne would visit Trowbridge on 25th & 26th January, playing blindfold against 6 opponents on the former date at 1 shilling (5p) a board, and simultaneously (sighted) against any number on the latter date at 6d (2½p) a board. Alas, there is no record that the visit took place. Does any reader know? A later report said that the Rev. J. F. Welsh was trying to induce the then World Champion Dr. Lasker, to visit Wiltshire after his forthcoming visit to Bristol. Did either visit take place?

Before closing the shutter on what is not so much a window into the past, but more a little peep-hole, here is a game taken from a cutting dated 12.01.01, selected and analysed by my Club colleague Bob Lynn, currently Salisbury's strongest player. The game was played the previous Saturday at The Woolpack, Trowbridge, on Bd. 2 in a match won 4 - 2 by Swindon., evidently then the strongest Wiltshire Club. Mr. Plaister had played Bd. 4 and Mr. Woodrow Bd. 10 in the above Wilts v. Glos match, and so were no slouches in their day.

J. Woodrow (Salisbury)
C. A. Plaister (Swindon)
1901

1. e4	e5
2. Nf3	Nc6
3. d4	exd4
4. Nxd4	Qh4

Such an eccentric and potentially troublesome move would hardly have occurred to the modern player. Black stamps his

style on the game and starts on the road to scatty territories.

5. Nb5 Qxe4+ White takes up the challenge. Otherwise 5.Nc3 Bb4 doesn't help much.

6. Be2 Bb4+

7. c3 Ba5 A nice idea to protect c7. White could have played 7. Bd2, when presumably Black would have kept up the spirit with Kd8. Then, if 0-0 Nf6 etc.

8. 0-0 Nge7

9. Bd3 Qh4

10. Re1 a6

11. Re4 Qf6 White, a pawn down, erroneously embarks on a wild idea which might have come off.

12. N5a3 d5

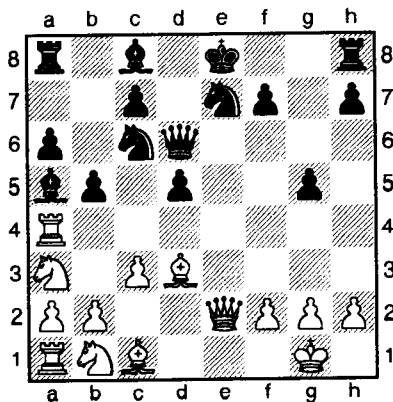
13. Rf4 Qd6

14. Qe2 White is already in a bit of a pickle. He clearly doesn't relish the idea of the Black Knight coming to g6. I suspect that some vigorous play such as Qh5 or Be3 might have been better.

14 ... g5 Modern players might opt for the safer Be6

15. Ra4 It was vital that this square was kept open for the rook. Why else should it have gone to e4!?

15 ...b5



Now for the fun!

16. Bxb5 axb5

17. Nxb5 Qh6

18. b4 If 18. Nc7 Bc7 19. Ra8 Qh2+. White has his eye on the b2-h8 diagonal.

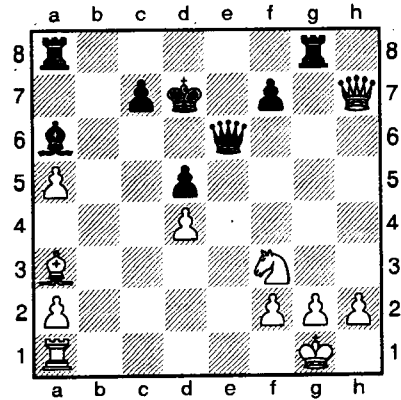
18 ... Bb7 Suddenly, Black's position does not look quite so comfortable. Alternatives, however, seem worse.

19. bxa5 Kd8 The King is less exposed here than on d7 where White can simplify into a favourable ending with Qg4+ and Qg5.

20. Nd4 But this is definitely not right

20... Nxd4

- 21. cxd4 Ba6
- 22. Qe3 Qc6
- 23. Ba3 Qxa4
- 24. Qxe7+ Kc8
- 25. Nd2 Qe8
- 26. Qxg5 Rg8
- 27. Qf5+ Qe6
- 28. Qxh7 Kd7
- 29. Nf3?



The final blunder. g3 would have held on for a bit longer. 29...Rxc2+

30. Kxg2 Qg4+

31. Kh1 Qxf3+

32. Kgl Bd3

33. Qg7 Ra6

34. Be7 Rg6+

0-1

No doubt soberly dressed, these gentlemen certainly played with panache!



Icelandic Interlude

Most of the West of England County teams contain a loyal core of regular players who give their side's composition a familiar look - and very grateful their captains are, no doubt. Also, in those counties that pursue a positive policy towards the encouragement of junior players, the regulars are supplemented by a steady supply of good young players who work their way up the batting order till they find their level.

On the other hand, it's very nice, from time to time, to have an injection of ready-made talent from an external source. Such was Devon's experience this season when the Icelandic I.M. Águst Karlsson turned up unexpectedly at Exeter University to do a year's course in Law.

Águst, born on the 1st August (of course) 1963, was something of a junior prodigy, and by the age of 19 had a chapter to himself in the book "Icelandic Chess Masters", published in the mid-80s.

In spite of his legal studies, he turned out regularly on top board for Devon as well as playing for Bristol & District in the National Chess League.

As something of a farewell do, Águst, in conjunction with Brian Hewson, arranged a friendly 6 board match between the Exeter club and Águst's own club from Hafnarfjordur, Iceland's third largest town with a population of just 16,000. Such is the strength of the Icelanders that to make things fair, they left a 200+ grade player at home and Águst played for Exeter, who were also allowed to play Michael Zuber of Switzerland, currently on an even shorter stay in the U.K.

Before the start of the match, commemorative gifts were exchanged, each Exeter player receiving a copy of "Vid Skákbordid I Aldarfjording" (25 Years At The Chessboard) by Fridrik Ólafsson, and

the Club library was given an Icelandic-English dictionary to help with the translation. In return, each Icelander received a bottle of Thomas Hardy's Wessex Ale, with a suggestion it be drunk sooner rather than later. This invitation was respectfully declined, probably wisely, and the match got under way, which, in spite of some exciting games, was drawn.

	Exeter				Hafnarfjordur	
1	Á Karlsson	214	½	½	B.F. Bjornsson	202
2	K. B. Hills	185	0	1	S. Bjornsson	196
3	M. Zuber	181	½	½	H. Asgiernesson	183
4	B. Hewson	174	0	1	Sv Bjornsson	174
5	P. Lane	161	1	0	E.K. Einarsson	172
6	C.J.Bellers	171	1	0	A. Magnusson	151
	Total		3	3		



County Correspondence Championship

Division III (Brown-Pond)

1=	Essex IV	14
1=	Warwickshire III	14
3=	Devon II	12
3=	Essex III	12
5	Leicestershire II	11
6=	Kent III	10
6=	Lancashire II	10
8=	Surrey II	8½
8=	Warwickshire II	8½
10	Worcestershire	7
11=	Greater Manchester II	6½
11=	Merseyside II	6½

Full result tables for Divisions I & II can be found on another page.



The Times National Schools Championship 1995

The West of England was represented in the Semi-Finals, as so often in recent years, by Truro School. Form suggested they would get through to meet the holders, Ipswich School in the Final.

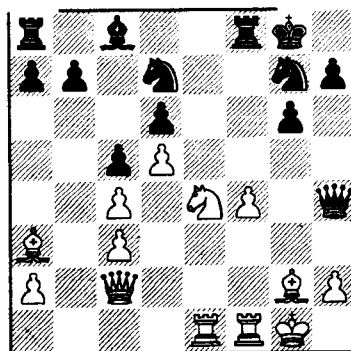
In their Semi-Final match against Maidstone Grammar, Truro looked set fair, leading 3 - 2 and a superior position in the last game. However, the Maidstone player snatched an unlikely win to tie the score, leaving Truro to lose out on the age handicap.

Truro School			Maidstone G.S.
Roland Cole	1	0	Jeffrey Titmas
Andrew Greet	½	½	J. Knowles
Jonathan Davies	0	1	D. Titmas
Jack Searle	½	½	M. Noakes
Cornelia Schneider	1	0	John Titmas
David Greet	0	1	T. Jarrett
	3	3	

Here is the Truro Captain, Roland Cole's steady win on Board 1.

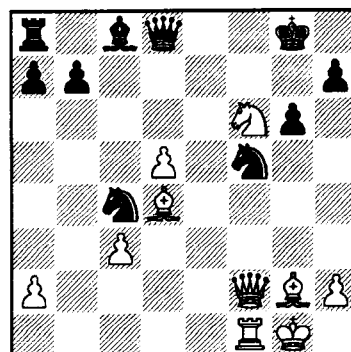
**Roland Cole (Truro School) –
Jeffrey Titmas (Maidstone G.S.)**
Times National Schools Competition
(Semi-Final), 1995

- | | |
|----------|-------|
| 1. d4 | Nf6 |
| 2. c4 | e6 |
| 3. Nc3 | Bb4 |
| 4. g3 | Bxc3+ |
| 5. bxc3 | d6 |
| 6. Bg2 | 0-0 |
| 7. Nf3 | Nbd7 |
| 8. 0-0 | Qe7 |
| 9. Nd2 | e5 |
| 10. e4 | c5 |
| 11. d5 | Ne8 |
| 12. Qc2 | g6 |
| 13. f4 | xf4 |
| 14. gxf4 | Ng7 |
| 15. Ba3 | f5 |
| 16. Rael | fxe4 |
| 17. Nxe4 | Qh4 |



Abandoning the backward pawn in the hope of counter-play.

- | | |
|----------|-------|
| 18. Nxd6 | Rxf4 |
| 19. Rxf4 | Qxe1+ |
| 20. Rf1 | Qe7 |
| 21. Ne4 | Nf5 |
| 22. Qf2 | Ne5 |
| 23. Bxc5 | Qd8 |
| 24. Bd4 | Nxc4 |
| 25. Nf6+ | |

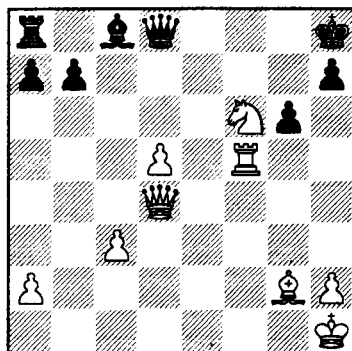


Here ensues a sequence which suggests shortage of time.

- | | | |
|----------|-------|------|
| 25 | | Kh8 |
| 26. Ne8+ | | Kg8 |
| 27. Nf6+ | | Kh8 |
| 28. Kh1 | | Nce3 |
| 29. Ne8+ | | Kg8 |
| 30. Nf6+ | | Kh8 |
| 31. Qf4 | | Nxd4 |
| 32. Qxd4 | | Nf5 |
| 33. Rxf5 | | |

**Cornelia Schneider (Truro School) -
Timothy Kiddell (Ipswich School)**

Times National Schools Tournament
(3rd Place Play Off) , 1995



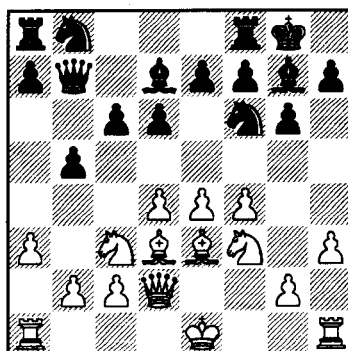
If BxR, then the discovered check, from the queen rather than the earlier bishop, is swiftly fatal. 33...Bxf5 1-0

In the other semi, the holders, Ipswich, had been surprising beaten 5 - 1 by Methodist College, Belfast. They went on to meet Maidstone in the Final, and again it went to a nail-biting, last game finish. As the older team, Belfast had to get at least 4 points to win the match, and their last player to finish, a whole piece down, found a winning combination to give the Irish team 4½ points, Ireland's first win in the competition.

Truro met Maidstone in the 3rd place play-off, needing 3½ points to win, which they duly did, with the help of the following win from Cornelia Schneider.

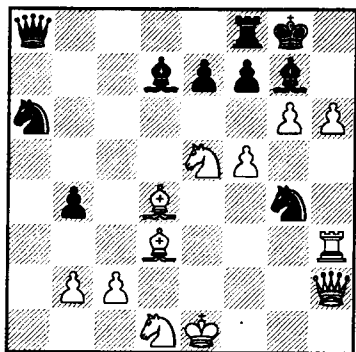
Truro School			Ipswich School
R. Cole	1	0	N. Pert
A. Greet	½	½	R. Pert
J. Davies	0	1	M Fletcher
J. Seale	1	0	M O'Connell
C. Schneider	1	0	T. Kiddell
D. Greet	½	½	T. Fletcher
	4	2	

1. e4 d6
2. d4 Nf6
3. Nc3 g6
4. f4 Bg7
5. Nf3 O-O
6. h3 c6
7. Be3 b5
8. a3 Qc7
9. Qd2 Bd7
10. Bd3 Qb7



Apart from castling, White is now ideally developed, whereas Black's Q-side configuration looks less than perfect.

11. g4 a5
12. e5 Ne8
13. f5 b4
14. axb4 axb4
15. Rxa8 Qxa8
16. Nd1 Nc7
17. h4 Nba6
18. h5 c5
19. Rh3 cxd4
20. Bxd4 Nd5
21. Qh2 dxe5
22. Nxe5 Nf6
23. hxd6 h6
24. g5 Ng4
25. gxh6



Cornelia feels confident enough to give up her queen while pressing on with her pawn storm on the king's position.

25. Nxf2

26. gxf7+ Kh7

27. hxg7+ Kxg7

28. Nxd7+ Kxf7

29. Rxh2 Mustn't overlook defence at this time.

29Rd8

30. Ne5+ Ke8

31. Rh8 Resigns

Black had had to play his last few moves in seconds, but his king is so exposed to the minor pieces that there is no hiding place. 1-0

In spite of their disappointment at not reaching the Final, Truro deserve the congratulations of all WECU supporters.



NewsKnight

Readers with an interest in chess in Dorset may like to know of a new publication called NewsKnight, the official magazine of the Bournemouth & District Chess League. This is put together by a team comprising:

Editor: Alan Dommett.
 Technical Advisor: Martin Simons
 Production: Steve Crisp
 Proof Reader: Richard Holmes

The September issue is already on the streets, and anyone interested in securing a copy should contact Martin Simons at:-

6a, Osborne Road,
 Winton.
 Bournemouth.
 BH9 2JL

☎ 01202-513504

The current issue of four A4 sheets includes a well-analysed game from the final round of the Bournemouth Swiss between Simons and Gerald Bennett, full Bournemouth League results and an Opening Oddities feature which looks at an unusual line in the Pirc, the home-brewed "Pegg System".

Divisions I and II of the Bournemouth League finished thus:-

Division I

Team	p	w	d	l	pts
Southbourne B	9	7	2	0	16
Southbourne A	9	6	1	2	13
Merck A	9	6	0	3	12
Southbourne C	9	4	1	4	9
New Milton A	9	3	2	4	8
Wimborne A	9	3	2	4	8
Oakdale A	9	3	1	6	7
Oakdale B	9	3	1	5	7
Parkstone A	9	2	2	6	6
Kinson A	9	1	2	6	4

Division II

Team	p	w	d	l	pts
Lymington A	9	8	0	1	16
Bournemouth	9	5	1	3	11
Barclays	9	5	1	3	11
Highcliffe A	9	5	0	4	10
Parkstone B	9	4	1	4	9
Southbourne D	9	3	2	4	8
Wimborne B	9	3	1	5	7
Merck B	9	3	1	6	7
Kinson B	9	3	0	6	6
Parkstone C	9	1	3	5	4

Frome Congress 1995

Over 230 players entered this year with more wanting to play but unable to do so for lack of room. One development was the addition of a new section for those graded Under 90, the Contenders, and this proved a great success as it attracted many who had not taken part in a tournament before. Regular sponsor, Jean Mackereth of Selwood Frames, donated a new trophy for the new section.

Prizewinners were:-

Open:

	Name	Club	Pts
1st=	D. Coleman	Powdermill	4
	M. Franklin	Richmond	4
	J. Rudd	Yeovil	4
U170	P. Benson	Widnes	
	D. Grossett	Bristol & Clifton	
	D. Tan	Richmond Juniors	

British Championship qualifiers:-

D. Coleman

J. Menadue (St. Austell)

Major (U170)

1st	D. Buckley	Keynsham	4½
2nd=	K. Green	Aberdare	4
	T. Matko	Cranfield	4
U140	P. Butterfield	Grendell	

Intermediate (U135)

1st	S. Chadaway	Handsworth Wood	5
2nd=	GBerryman	Frome	4
	A. Jones	Newbury	
	I. McMillan	Sedgemoor	
	J. Newcombe	Grendel	
	ESandercock	Gerrards Cross	
U115	M. Farina	Keynsham	
U/G	J. Reid	Bath	
	A. Rham	Bath	

Minor (U115)

1st=	M. Brierly	Burnham	4½
	M. Carver	Reading	
3rd=	P. Baker	Gloucester	4
	S. Crockart	Hanham	
	R. Walker	Belper	
U90	B. Childs	Bodmin	
	A. Gladwell	Westinghouse	
	H. Harvey	Monmouth	
	J. Whitfield	Harpford	
U/G	D. Barnstable	Street	
	S. Chant	Devizes	
	S. Reynolds	Supermarine	

Contenders (U90)

1st	M. Jacobs	Bath	5
2nd	D. Bale	Newport	
3rd=	R. Billows	Nailsea	4
	D. Allberry	Trowbridge	
	R. Copeland	Trowbridge	
	R. Knight	Yeovil	
U76	D. Burke	Norton-Radstock	
	T. Chapman	Yeovil	
U/G	A York	Nailsea	

Somerset trophies were won by those named in bold type.

D. Buckley also won the Cuprinol Junior Trophy.

Nailsea won the team competition.



Book Review

Dr. Dave Regis Looks At "Attack with Mikhail Tal"

(179pp + index) Cadogan Press: London
Mikhail Tal & Iakov Damsky £11.99

Mikhail Tal needs no introduction: the wizard who emerged in the late 1950s as a force to complement the science of Botvinnik. This is Tal's last word to the chess world, some of which was transcribed from tapes made days before his death in 1994, and which he did not live to complete. Damsky tells us the planned title was *Everything About Attack*, and rues the omission of a planned chapter on the Queen's-side attack. The none chapters completed are listed below.

Each Chapter contains a number of examples, for instance, the chapter on the eight rank contains 16 examples from games - some rather familiar (like Levitsky - Marshall) - with four test positions and an example complete game with the same back rank theme. I have another book - *Test Your Chess IQ* by Livshits - which contains 32 such examples. What extra do you get from the Tal/Damsky book?

Livshits' positions all have a concrete short-term solution (say, White to pay and win in 5 moves), whereas the examples in this book are nearly all of the sort that Spielmann calls 'real' sacrifices - being genuinely unclear, or at least requiring more judgement than calculation. The first example does resolve inside 7 moves, but the second only clears up after 17 moves. This sort of thing is real chess drama, and is great fun to watch in action. Tal and Damsky also give some chatty annotation which is mostly engaging and illuminating. Lastly, the themes are strategic more than tactical - the back rank chapter is the only one with an explicitly tactical theme. But all the common sacrificial motifs are present:

Chapters:

1. The Main Indicator - King in the Centre
2. Breakthrough in the Centre
3. The Assault Ratio.
4. Invasion Trajectories- lines of approach.
5. Lines of communication (ie interference)
6. Outposts.
7. Eliminating Defenders.
8. At the Royal Court (7th & 8th ranks)
9. Destroying the Fortress Walls.

Let me say immediately, the book is warm and witty, and the examples are hugely enjoyable. So, if the material and ideas listed above are unfamiliar to you, then I'd grab it. Criticisms? It's churlish to carp about such an enjoyable book, and since Tal's death, a moving one, but I'll mention one or two.

It was never going to be *everything about attack*. It is missing the concrete examples (for which see Livshits), and also the rather slow attacks with a closed centre that need not require a sacrificial outburst. It also lacks any reference to the various 'natural histories' of attack that have gone before (for example, the works of Vukovic), and so the examples may be hard to integrate in the mind. But alongside these works, AWMT has a place as a modern handbook of examples.

These are perhaps things the authors would freely concede, because they never claimed more for their book. But they did say their "aim of suggesting: where and on which paths in the dense forest of variations are concealed those indicators ... that will allow you ... to switch ... to an attack". This is an enticing prospect: to accompany these master physicians in their diagnoses. How far is this aim realised? My view is that the book

fails here. I got an early impression that these indicators include, firstly, a lead in development, and secondly, open lines or the capacity to open them, but after this, it is all rather post hoc. We meet comments like:

"it turns out that now this is possible" (p.12)

"The correct evaluation of the position is only established by the typical attacking device carried out by the ex-world champion" (p. 19)

So, although the examples are rich, the explanations are not very crisp. Tal says at one point (p.8) *"we are talking here rather abstractly, rather in the spirit of Mikhail Moiseyevich"* (Botvinnik), and while this book is full of Tal's charm, it lacks Botvinnik's science.

Lastly, the test positions I found at once too hard and too easy. Let me give you an example:

Adjacent is the first test position from the first chapter. It may take you half a second to spot the only sacrificial idea, namely Nxf7, but it may take you forever to judge it properly. The game is actually from Tal-Simagen (given in full below) and clearly his Grandmaster opponent misjudged the sacrifice. I don't know if he missed Tal's 15th move, but the game was not decided until move 45.

Almost all the examples are, like this one, *successful* ones - a sacrificial opportunity arises and is discovered to be sound. Only by comparing cases where sacrifices succeed and where they fail will we start to develop the judgement, and start to identify the indicators for ourselves.

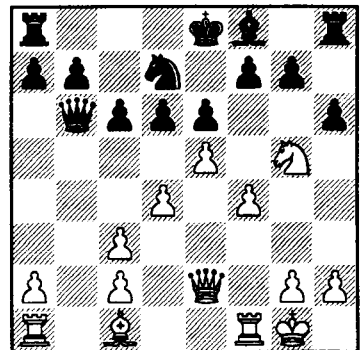
The whole game shows at once the strength and weakness of the book: a wonderfully dramatic attack, but could the reader emulate it?

White: Tal

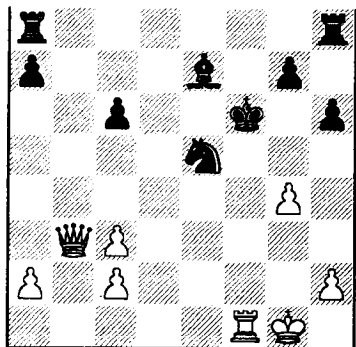
Black: Simagen

1956

- | | |
|----------|------|
| 1. e4 | c6 |
| 2. d4 | d6 |
| 3. Nc3 | Nf6 |
| 4. f4 | Qb6 |
| 5. Nf3 | Bg4 |
| 6. Be2 | Nbd7 |
| 7. e5 | Nd5 |
| 8. 0-0 | Nxc3 |
| 9. bxc3 | e6 |
| 10. Ng5 | Bxe2 |
| 11. Qxe2 | h6 |



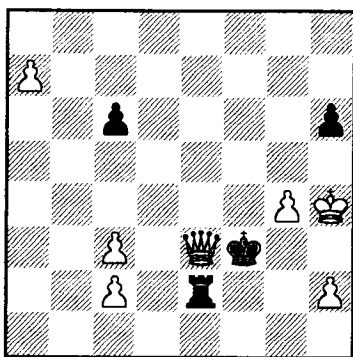
- | | |
|-----------|--|
| 12. Nxf7 | Kxf7 |
| 13. f5 | dxe5 |
| 14. fxe6+ | Kxe6 |
| 15. Rb1 | This cheeky move regains some material. 15... Qxb1 |
| 16. Qc4+ | Kd6 |
| 17. Ba3+ | Kc7 |
| 18. Rxb1 | Bxa3 |
| 19. Qb3 | Be7 |
| 20. Qxb7+ | Kd6 |
| 21. dxe5+ | Nxe5 |
| 22. Rd1+ | Ke6 |
| 23. Qb3+ | Kf5 |
| 24. Rf1+ | Ke4 |
| 25. Re1+ | Kf5 |
| 26. g4+ | Kf6 |
| 27. Rf1+ | |



White's harrassment picks up a piece. Now Black must mobilise his rooks before White picks up all the pawns; sadly, he's too late. 27... **Kg6**

- 28. **Qe6+ Kh7**
- 29. **Qxe5 Rhe8**
- 30. **Rf7 Bf8**
- 31. **Qf5+ Kg8**
- 32. **Kf2 Bc5+**
- 33. **Kg3 Re3+**
- 34. **Kh4 Rae8**
- 35. **Rxc7 Kxc7**
- 36. **Qxc5 R8e6**
- 37. **Qxa7+ Kg6**
- 38. **Qa8 Kf6**
- 39. **a4 Ke5**
- 40. **a5 Kd5**
- 41. **Qd8+ Ke4**
- 42. **a6 Kf3**
- 43. **a7 Re2**
- 44. **Qd3+ R6e**
- 45. **Qxe3+**

1 - 0



Final position. Superb! Tal kept the pot boiling throughout.

County Correspondence Chess

1994/95 Championships

Final Tables

Division I (Ward Higgs)

1	Sussex	22
2=	Essex	19½
2=	Kent	19½
4	Gloucestershire	18
5=	Berkshire	16½
5=	Nottinghamshire	16½
5=	Warwickshire	16½
8	Suffolk	16
9	Leicestershire	15
10	Lancashire	14½
11	Devon	13½
12=	Middlesex	12½
12=	Worcestershire	12½
14	Surrey	11
15=	Cheshire & N.Wales	8½
15=	Northamptonshire	8½

Division II (Sinclair)

1	Essex II	20
2	Lincolnshire	17½
3=	Kent II	17
3=	Wiltshire	17
5	Greater Manchester	16½
6=	Dorset	15½
6=	Somerset	15½
8	Buckinghamshire	14½
9=	Cornwall	14
9=	Cumbria	14
9=	Hampshire	14
12	Hertfordshire	12½
13=	Merseyside	11½
13=	Staffordshire	11½
15	Norfolk	11

The Division III table can be found on another page.

Congratulations are due to Gloucestershire for being the top WECU county overall, and to Wiltshire who are promoted from Division II as both Essex II and Kent II are ineligible.

Finally a lively game from WECU Past President Ken Bloodworth that helped to keep Devon afloat in the Ward-Higgs.

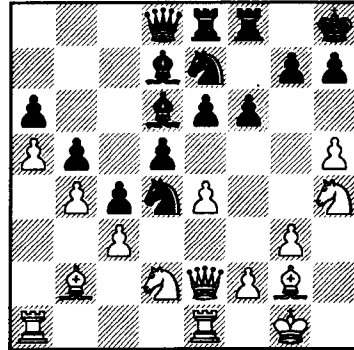
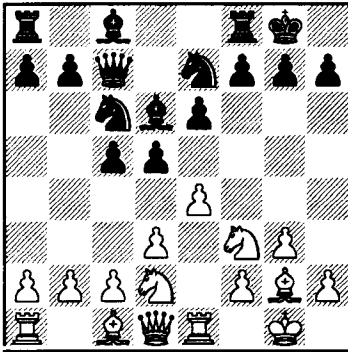
K. J. Bloodworth (Devon) Bd. 4

S. Walker (Surrey)

Counties Correspondence Championship (Div I), 1995

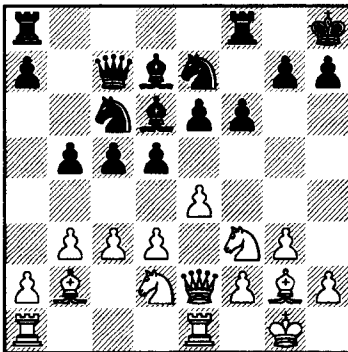
- 1. e4 e6
- 2. d3 c5
- 3. Nf3 Nc6
- 4. g3 d5
- 5. Nbd2 Bd6
- 6. Bg2 Nge7
- 7. 0-0 0-0
- 8. Re1 Qc7

- 15. b4 Ng6
- 16. a5 Rae8
- 17. h4 Qd8
- 18. h5 Nge7
- 19. Nh4 Nxd4



Prevents e5 but poses no threat.

- 9. Qe2 f6
- 10. c3 Bd7
- 11. b3 Kh8
- 12. Bb2 b5



Black presses on with his Q-side diversion, but now he has to sacrifice.

- 20. cxd4 Bxb4
- 21. Ba3 Qxa5
- 22. Bxb4 Qxb4
- 23. Rxa6 c3
- 24. Ndf3 Rc8
- 25. exd5 Luring the Knight away, thus allowing the following double Knight sacrifice.
- 25 Nxd5
- 26. Ng6+ hxxg6
- 27. hxg6 Rfe8
- 28. Ng5 fxg5
- 29. Bxd5 Qxd4 [29...exd5 30.Qh5+ Kg8 31.Qh7+ Kf8 32.Qh8mate]
- 30. Qh5+ Kg8 Won on time, but White has a winning attack anyway. Some possibilities are:- If 31...Bxe6 [31...Kf8 32.Qh8+ Ke7 33.Bf7+ Kd8 34.Rxe8+ Kc7 35.Rxc8+ Bxc8 36.Ra8] 32.Raxe6 Rxe6 33.Rxe6 Qd1+ 34.Kh2 c2 35.Qh7+ Kf8 36.Qh8 mate.

Vigorous Q-side play by Black, hoping to prevent a K-side attack. My play aims to stabilise the Q-side.

- 13. a4 a6
- 14. d4 c4



11th March 1995

The crunch match in the county championship this year was the last round encounter between Devon and Hampshire, making a fitting climax to the competition as a whole. Although both were virtually assured of going on to the National Quarter-Final stages, there were two pieces of hardware at stake, and either team could win either trophy. Although Devon managed to outgrade Hampshire on the top three boards, the advantage ended there, and the Hampshire strength-in-depth, with half the team 190 or above, helped them shade the first team match.

The difference in strength continued down into the second team, where most Devon players were outgraded by approximately 20 points, and Hampshire rather romped home, thus retaining both the Harold Meek and Wayling Cups.

1 Lane G W	231	1 - 0	Corkett A	209
2 Karlsson A S	214	1 - 0	Webb R M	210
3 Chaski	210	0 - 1	Thompson I D	202
4 Beake B	198	0 - 1	Morris C F	201
5 Hills K	185	0 - 1	Neil D R	199
6 Heath C	182	0 - 1	Noyce R C	195
7 Wheeler J F	177	½ - ½	Brameld A F	191
8 Hewson B W	174	1 - 0	Yeo M J	190
9 Brusey A W	165	0 - 1	Tunks D	189
10 Bellers C	171	½ - ½	Newbury M L	183
11 Morgan P	162	½ - ½	Blake C A	172
12 Lane P	161	½ - ½	Jones J H	177
13 Wheeler G W	160	1 - 0	Thompson P I	189
14 Harris P	170	0 - 1	Purkiss W	174
15 Regis D	157	0 - 1	Bell D W	174
16 Ridolfo J	149	1 - 0	Smallbone K	160
		7 - 9		

17 Kinder A	154	0 - 1	Knox S W	171
18 Leigh M	149	1 - 0	Miller P D	172
19 Hamon M D	151	0 - 1	Marsh R D W	168
20 Jones R H	150	0 - 1	Buckley M G	166
21 Towers R C	156	½ - ½	Wilkinson J	167
22 Halmkin P E	151	0 - 1	McLeod F N	162
23 Annetts I S	146	0 - 1	Ramsdale J	154
24 Taggart I	148	½ - ½	Body M	156
25 Carpenter R	145	1 - 0	Herion M B	146
26 Carpenter P	145	0 - 1	Thompson D F	154
27 Brookwell C	143	0 - 1	Smith A D	153
28 Walton E	143	½ - ½	Hagan M C	152
29 Bloodworth K	137	½ - ½	Stenhouse I	152
30 Jolly M	129	½ - ½	Dean S	143
31 Rudall D	128	½ - ½	Clarke M C	149
32 Frost N	116	½ - ½	Barber P	148

W.E.C.U. SENIOR JAMBOREE 1994

A1	Poulton J R	222	½ - ½	E1	Cole R B	201
B1	Rudd J	192	0 - 1	D1	Cobb J E	207
F1	Karlsson A S	214	½ - ½	C1	Phillips R	199
C2	Rendell R W	171	0 - 1	B2	Whitcutt J	182
D2	Cobb C A	199	0 - 1	A2	Webb R M	210
E2	Menadue J F	185	½ - ½	F2	Beake B	198
A3	Thompson I D	202	1 - 0	C3	Denison P	164
E3	Greet A N	183	1 - 0	D3	Haydon R	199
F3	Hills K	185	1 - 0	B3	Fawcett J K	164
B4	Chapman P M	161	½ - ½	A4	Noyce R C	195
C4	Boyce J R	163	1 - 0	E4	George I.M.	175
D4	Cooper A C	192	½ - ½	F4	Lingham R	179
A5	Coates K G	193	1 - 0	F5	Wheeler J F	177
B5	Littlejohns	161	½ - ½	E5	Grime R.J.	156
C5	Gingell M	159	1 - 0	D5	Lea E G	180
D6	Harwood D	165	1 - 0	C6	Jordan D	150
E6	Schneider C	144	1 - 0	B6	Jepps G N	158
F6	Brusey A W	165	0 - 1	A6	Brameld A F	191
C7	Carr J J	148	1 - 0	F7	Wheeler G W	160
D7	Windebank G	165	½ - ½	B7	Chaplin P	153
E7	Bartlett S	143	0 - 1	A7	Yeo M J	190
A8	Tunks D	189	0 - 1	D8	Johnson B R	162
B8	Gosling B G	154	1 - 0	C8	Breeze G	139
F8	Lane P	161	0 - 1	E8	Onley D	139
B9	Dobber P	146	0 - 1	F9	Morgan P	162
C9	Roberts Shan	132	0 - 1	A9	Bennett G H	188
D9	Churm R	156	0 - 1	E9	Seale J	134
A10	Newbury M L	183	1 - 0	B10	Woodruff D G	141
E10	Hayes P	130	0 - 1	C10	Marke T M	131
F10	Regis D	157	½ - ½	D10	Debbage I	148
A11	Knox S W	171	½ - ½	E11	Sellwood C	127
B11	Wood D C	138	½ - ½	D11	Ward D E	148
F11	Leigh M	149	1 - 0	C11	Smith A V	123
C12	Roberts S C	124	1 - 0	B12	Mc Kinley C	138
D12	O'Byrne D L	143	0 - 1	A12	Buckley M G	166
E12	Barkhysen A	120	½ - ½	F12	Jones R H	150

1. HAMPSHIRE (A) 9½ pts
2. CORNWALL (E) 6½ pts
- 3= DEVON (F) 5½ pts
- GLOS. (C) 5½ pts
5. WILTSHIRE (D) 5 pts
6. SOMERSET (B) 4 pts

W. E. C. U. GRADED JAMBOREE 1994

Q1	Chapman G	140	1 - 0	V1	Bull J J	138
T1	Pope S	133	½ - ½	R1	Balfour D A	140
V2	Maishman R M	134	½ - ½	P1	Hodge D J	139
P2	Bloodworth K	137	½ - ½	T2	Rogers P M	126
R2	Rapkins D G	140	0 - 1	Q2	To I S	136

P3	Gorodi J	137	½ - ½	R3	Primmett A D	138
V3	Wallis T A	133	1 - 0	T3	Sparke E G	129
T4	Snell G	126	0 - 1	Q3	Debbage L	135
Q4	Woodward T	129	1 - 0	P4	Deakin C	132
R4	Mann C P B	138	0 - 1	V4	McMillan I	132
Q5	Hewitt A	123	1 - 0	R5	Hunwicks G A	132
T5	Palmer A	116	½ - ½	P5	Bruce Mrs R	123
P6	Ayress D	114	½ - ½	V5	Barratt C F	127
R6	Holliday T	128	0 - 1	T6	Jenkins G J	126
V6	Manning P	121	1 - 0	Q6	Carver R	121
P7	Horseman D	112	1 - 0	Q7	Wardell R F	119
V7	Senior N N	124	1 - 0	R7	Hamilton Tay	128
Q8	Phoutsady C	118	0 - 1	T7	Edwards D	123
R8	Sheehan E A	116	1 - 0	P8	Willis R	111
T8	Webb S	123	1 - 0	V8	Cole E W	123
V9	Wood S	97	1 - 0	Q9	Bridge D	114
R9	Rookes A D	109	0 - 1	T9	Blackmore M	120
P9	Hay T J	111	0 - 1	V10	Buckley D E	107
T10	Le Gallez Pa	118	1 - 0	P10	Short P S	104
Q10	Pott D H	114	1 - 0	R10	Curtis M	80
R11	Mann Mrs B G	94	½ - ½	P11	Wilkinson B	103
T11	Rosseinsky J	118	0 - 1	V11	Buckley Simo	106
Q11	Walters M	114	0 - 1	T12	Roberts P J	114
P12	Smith F W	85	1 - 0	Q12	Debbage P	85
V12	Buckley Mela	98	1 - 0	R12	Marples R A	64

1. SOMERSET (V) 9 pts
2. EXETER (T) 7½ pts
3. WILTSHIRE (Q) 6 pts
4. TORBAY (P) 5 pts
5. DORSET (R) 2½ pts



County Match Dates :: 1995/96

Date				bye
October 7th	Devon v Cornwall	Dorset v Glos	Somerset v Wilts	Hants
October 28th	Cornwall v Somerset	Glos v Hants	Dorset v Wilts	Devon
Nov 11th	Cornwall v Dorset	Somerset v Hants	Glos v Devon	Wilts
December 2nd	Hants v Cornwall	Wilts v Devon	Somerset v Glos	Dorset
January 6th	Wilts v Glos	Devon v Somerset	Hants v Dorset	Cornwall
January 27th	Glos v Cornwall	Devon v Dorset	Wilts v Hants	Somerset
March 9th	Hants v Devon	Dorset v Somerset	Cornwall v Wilts	Glos

How Final Is Death?

by Steve Boniface

Steve is a well-known administrator on the West Country scene, having controlled most congresses between Bristol and Plymouth at one time or another. He is also a regular contributor to many chess magazines, and to mark the 20th Anniversary of his first attempt at controlling - the first Exmouth & District Primary Schools Chess Congress in 1975 - (well, we all have to start *somewhere!*) - Steve has put pen to paper yet again

.....

Don't worry, this is not a metaphysical treatise, nor a plea for enforced euthanasia for opponents who simply won't resign, but a comment on the misuse of the word 'dead' in a chess context.

At a recent congress one particular player was bemoaning his luck in his first round game.

After an hour," he said, "I had a *dead won* game, but then I got into time trouble. After the time control the game was *dead drawn*, but then I ran short of time again". The final part of his tale recounted the tragedy whereby if only he'd had a few more minutes ... he wouldn't have lost.

This does rather imply that his opponent must have been Lazarus, or that he himself had a kamikaze tendency. In the same event another player claimed a half point, while a pawn down, in a position which he claimed was a theoretical draw. He seemed most upset when asked by the controller to play on in order to establish that he could, in fact, hold the game. Ultimately, his flag fell in a position where he had proved nothing, and his opponent's situation looked, if anything, much improved. The amusing postscript occurred the next morning when, still upset, he

insisted on playing out the ending from the original position against one of the congress committee. Six moves later he was mated, and was never heard of again!

It seems that unlike a squashed hedgehog, a flattened game gets a remarkable tendency to re-acquire life immediately before the time control. Gerald Abrahams once wrote about a concept called "The Margin of Draw" in which he explained that a person could play better moves than his opponent, but still might not be able to win because of the resources of the chessboard. For example, a bishop ahead normally wins, but not in King versus King with rook's pawn and bishop of the wrong colour.

There are other marginal positions where a game is *almost* won, but not quite, or conversely, almost lost, but with a resource which may or may not have been seen at the time the ending was reached. But because there *might* be a resource several moves down the analysis that *might* save a lost position, that is not reason for the evidence of the clock to be ignored. After all, players start with the same time, and a poor temporal investment at the beginning is a risky venture.

Meanwhile, to describe any position, other than something like King v. King & Bishop as "dead", is to misdiagnose the condition of John Cleese's parrot: for the time being, it is merely resting!



Devon Junior Chess News

Please send me copies of **Devon Junior Chess News**, as indicated. I enclose cheque/Postal Order for the appropriate amount, made payable to "The Keverel Group".

Next issue	£1.99	Next 2 issues	£3.90	Next 3 issues	£5.75
------------	-------	---------------	-------	---------------	-------

Name: (please print)	
Address:	
Post Code:	

Signed: Date:



please detach & return to:- R. H. Jones, Editor, Westward Ho!, Keverel Lodge, 40, Phillipps Avenue, Exmouth, Devon EX8 3HZ

Westward Ho!

Please send me copies of **Westward Ho!** as indicated. I enclose cheque/Postal Order for the appropriate amount payable to "The Keverel Group".

Next issue	£1.99	Next 2 issues	£3.90	Next 3 issues	£5.75
------------	-------	---------------	-------	---------------	-------

Name: (please print)	
Address:	
Post Code:	

Signed: Date:

Westward Ho!

is published by

KEVEREL D.T.P.

Proprietor: R. H. Jones



Keverel Lodge,
40, Phillipps Avenue,
Exmouth.
Devon
EX8 3HZ

Tel & Fax: 01395-223340

Also available:

Devon Junior Chess News	£1.99
Exmouth Chess Club Yearbook 1995/96	£1.99

Coming Shortly:

A new Devon Chess Newsletter

