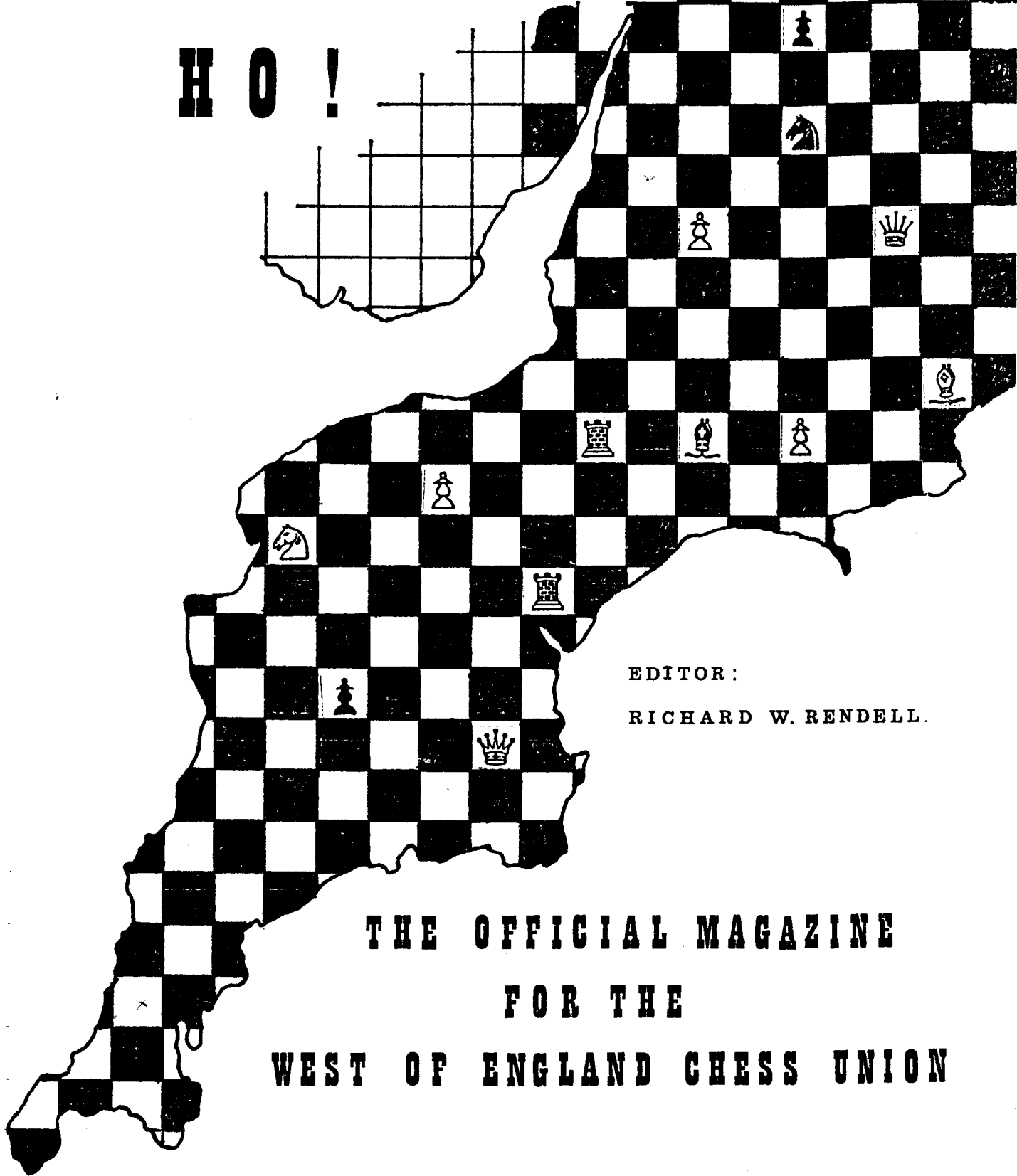


WESTWARD HO!



EDITOR:
RICHARD W. RENDELL.

THE OFFICIAL MAGAZINE
FOR THE
WEST OF ENGLAND CHESS UNION

FEBRUARY 1989



"The latest Westward Ho! at last!" I hear you all say yet again. Yes, I must admit I am even later this time in producing this magazine. Alas, I have fallen behind in production this year, February being the proposed second edition. I must apologise and I have no real excuse other than that I have renewed my interest in playing again this year (it had been in decline for a couple of years). I have also been to several Congresses although not playing in them which has resulted in not having sufficient time to type this. I must admit I have enjoyed my travelling to these events and this has, not surprisingly, snowballed. I have also appeared at several "foreign" chess clubs around the West of England which I have thoroughly enjoyed and have been made most welcome.

I must relate a happening which occurred at one of these clubs as I feel it warrants it: I managed to get a Friday off and have a long weekend at Bournemouth just after Christmas. I arranged to go to Parkstone Chess Club which I did on the Thursday evening but made a flying visit the following evening to the club at Southbourne, hoping that no one would recognise me. You know the old routine: sit down at a board, get the King and Queen on the wrong colours, play initially like a complete novice and then thrash your unsuspecting opponent! Alas, Alan Primett recognised me and greeted me as if meeting a long lost friend. Anyway, at about 11 pm after a thoroughly entertaining evening, I tried to go home. However, I found that the car park I had parked in was in fact a garage car park which was locked up and I couldn't get either in or get the car out! I therefore went back to the club to persuade someone into giving me a lift back into the City Centre. However, I hadn't banked on the ingenuity of the Southbourne 'A' Chess team. They decided to break in to retrieve the car despite most of them not even knowing who I was! The gate was removed from its hinges; however, the gate wouldn't open far enough to get the car through; however, somehow the whole gate came out! I managed to drive the car out and we set about putting the gate back together. Quite a sight at 11.30 pm. We managed to get the gate all but back together but all the lights in the compound came on and we decided to make a move. I hope the bloke who opened the gate in the morning didn't have the gate fall on him! My thanks to Messrs Dommett, Simons, Primett, Pegg snr and Pegg jnr, and one other whose name I didn't get, for their help. Who said chess players aren't helpful, friendly people...

I hope you enjoy this edition despite it being late. There are again a few new features. I hope you like my report on the Paignton Congress which I took part in; David Shire's article on The Latvian Gambit; and Nick Down's first article in his own name. I hope also that you don't find the competition too difficult, yet not too easy, and the letters from readers prove to generate further correspondence.

Happy reading.

Richard Rendell
Editor

THE SEPTEMBER 1988 GRADING LIST

As many of you will know, the September 1988 Grading list came out as promised on the first of September 1988. Indeed, the BCF kept its promise and got the relevant information to me sufficiently in advance to enable this. Consequently, the West of England Chess Union has managed to sell just short of 200 copies which is many more than last year.

I must, however, apologise to those I advised that there would be a large supplementary list. Alas, the BCF didn't keep totally to their word. They advised me through our Grading Officer that there would be a large supplement list with all 'D,E, and below' grades quoted. However, when they came to it, they decided not to print it as all this information was in the main Grading List. Hence,

the supplementary list which did get printed only included those grades which the Grading Officer manually calculated.

There weren't many players with 'D.E. and below' grades from the West of England Chess Union anyway.

If you wish to obtain a BCF Grading list see below.

I hope now that the problems experienced last year will not repeat themselves and that we can safely forget them. I personally believe that the BCF has now got its act together on this score...

WESTWARD HO! PRICE LIST

As well as the Westward Ho! subscriptions I have several additional books you may be interested in:

| | | |
|-----------------------|---------------|---|
| Westward Ho! | Subscriptions | £4.50 for 3 editions (this one included) £2.00 for 1 edition |
| WECU Grading List | | £1.50 (including p&p) (only a few left now) |
| BCF Grading List | | £6.00 |
| BCF Yearbook of Chess | | £4.50 (including p&p) |

The Yearbook has been redesigned and for once is well worth its price. Not only does it have reports on the final stages of the County Championships and the Congresses but it has all the names of the clubs, county officers and union officers in all the unions in the U.K. together with a contact name, address and telephone numbers. A must for most regular chess players.

Index

| <u>Page</u> | <u>Details</u> |
|-------------|---|
| 1 | Editorial |
| 1 to 2 | The September 1988 Grading List |
| 2 | Westward Ho! Advertisement |
| 2 | Index |
| 3 to 4 | The Latvian Gambit |
| 5 | West of England Chess Union Officers |
| 6 to 7 | A woeful tale of g8 |
| 7 | World Girls Chess Championships 1988 Report |
| 8 to 18 | The 1988 Paignton Congress Report |
| 18 to 19 | Problem and Competition Page |
| 20 | West of England Chess Union Jamboree Report |
| 21 to 23 | County Championship Results |
| 24 | Gems of the Chess Board |
| 25 to 27 | Letters from Readers |
| 27 to 28 | Answers to Problems |
| 28 | Latest County Championship Tables |

THE LATVIAN GAMBIT

By David Shire

At many of the Congresses in the West of England you will find a rather strange fellow playing even more strange openings. What's more he will be playing in the Open Sections, "in with the big boys", and he will be winning more often than not with these strange openings. The strange fellow in question is David Shire who claims that he doesn't play strange openings at all but rather well conceived sound openings. An example of this is "The Latvian Gambit" - over to you David.

RWR

When selecting an opening repertoire, consideration must be given to the time factor. Do you have time to keep up to date with the latest nuances of Sicilian Main Lines? If not, then the Latvian could be for you. Most opening texts treat it as a somewhat ridiculous opening. So much the better! The opponent who underestimates the Latvian usually comes unstuck...

After the opening moves 1.e2-e4 e7-e5; 2.Ng1-f3 f7-f5; two main lines emerge;

A. 3.Bf1-c4... and B. 3.Nf3xe5...

In this article I will consider the consequences of A. Play develops forcibly: 3.Bf1-c4 f5xe4; 4.Nf3xe5 d7-d5!;

A recurrent theme of the Latvian. Black takes control of the central White squares. In the "books" you will find the absurd 4...Qd8-g5??; Let me assure you, Black gets mated!

5.Qd1-h5+ g7-g6; 6.Ne5xg6...

Now Black has two acceptable continuations:

A1 6...Ng8-f6; and A2 6...h7xg6;

A1 6...Ng8-f6; 7.Qh5-e5+ Bf8-e7; 8.Bc4-b5+...

Probably best. 8.Ng6xh8? d5xc4; 9.Qe5-b5+ c7-c6; 10.Qb5xc4 Qd8-d5; 11.Qc4xd5 c6xd5; 12.Nb1-c3 Bc8-e6.., is a disaster; and 8.Ng6xe7 Qd8xe7; 9.Qe5xe7+ Ke8xe7; 10.Bc4-e2 Rh8-g8; 11.g2-g3 Nb8-c6!; is not much better.

The text move 8.Bc4-b5+ is an important trick to deny Black the use of c6 to his knight. For example, 8...c7-c6; 9.Ng6xe7 Qd8xe7; 10.Qe5xe7+ Ke8xe7; 11.Bc4-f1!... This move avoids the white square weakness after 11.Bc4-e2 Rh8-g8; 12.g2-g3...etc.

However, in a little known game F.J.Marshall-B.Forsberg New York 1921, Black refused to fall in with White's plans:

8...Bc8-d7!?;

Now after 9.Bb5xd7+ Nb8xd7; 10.Qe5xe7+ Qd8xe7; 11.Ng6xe7 Ke8xe7; Black has a large lead in development for his pawn.

9.Ng6xh8 Bd7xb5; 10.Nb1-c3 Bb5-a6; 11.d2-d3! Nb8-c6;

Not 11...e4xd3?; 12.Bc1-g5!...

12.Qe5-g3... when Marshall recommended 12...Nc6-d4; or 12...Qd8-d7; and 13...0-0-0; with plenty of play for Black.

Aggressive play from Black you may think, but he has an even more vigorous option at the 6th move!

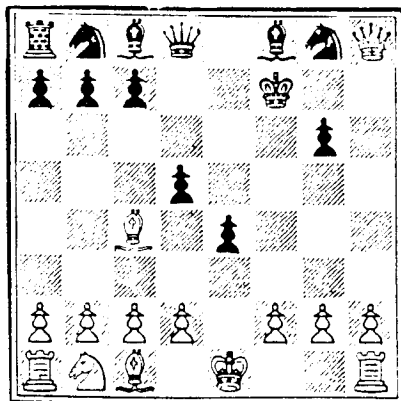
A2 6...h7xg6;

Play now diverges...

A21 7.Qh5xh8... and a22 7.Qh5xg6+...

A21 7.Qh5xh8 Ke8-f7;

This position deserves a diagram.



Black is the exchange and a pawn down but he rejoices in open lines and complete White square control.

Let's consider a "natural" continuation...

8.Bc4-e2 Bf8-g7; 9.Qh8-h7 Nb8-c6; 10.c2-c3 (to keep the Black knight out of d4) Qd8-g5; 11.g2-g3 Ng8-f6; 12.Qh7-h4 Qg5xh4; 13.g3xh4 Bc8-f5;

and the ending is wonderful for Black. To avoid the White Queen getting in a tangle, one opponent tried 8.Qh8-d4... but I enjoyed that game!:

8.Qh8-d4 Bc8-e6; 9.Bc4-b3 Nb8-c6; 10.Qd4-e3 Bf8-h6; 11.f2-f4 Ng8-e7; 12. O-O Bh6-g7; 13.c2-c3 Ne7-f5; 14.Qe3-e2 Nc6-d4!; 15.c3xd4 Bg7xd4+; 16.Rf1-f2 (Kg1-h1 Nf5-g3+) Qd8-h4; 17.Nb1-c3 Qh4xh2+!; 18.Kg1xh2 Ra8-h8+; 19.Kh2-g1 Nf5-g3; 0-1 A22 7.Qh5xg6+...

This is clearly the most logical - White will not surrender the initiative.

7...Ke8-d7; 8.Bc4xd5 Ng8-f6; 9.Nb1-c3...

Another very enjoyable (Skittles) game continued... 9.Bd5xe4 (greedy!) Qd8-e7; 10.d2-d3 Rh8-g8; 11.Qg6-f5+ Kd7-d8; 12.Qf5-f3 Nb8-c6; 13.Nb1-a3 Nc6-e5; 14.Qf3-e3 Nf6xe4; 15.Qe3xe4 Rg8xg2!; 16.Qe4xg2 Ne5xd3+; 17.Ke1-d1 Nd3xf2+; 18.Qg2xf2 Bc8-g4+; 19.Kd1-d2 Qe7-d6+; 20.Kd2-c3 Bf8-g7+; 21.Kc3-b3 Bg4-e6+; 22.c2-c4 Qd6-d3+; 0-1

9...Qd8-e7; 10.b2-b3!...

Again 10.Bd5xe4... is worse. 10...Kd7-d8(threatening 11...Rh8-g8); 11.Qg6-g5 Bf8-h6; Enklaar-Andersen 1973.

10.b2-b3... threatens to continue with Bc1-a3 etc. There is not much experience in this position but I suggest that both 10...c7-c6; and 10...Rh8-h6; are worthy of investigation. Queens will normally be exchanged on g7 or f7 giving rise to an unclear ending.

In conclusion it may be stated that in the 3.Bf1-c4... lines, Black can normally establish a White square bind if he makes a small investment. The initiative he obtains oftens continues into the endgame. As far as White is concerned it seems best to fight for the initiative as vigorously as possible. In particular A22 seems to be his most promising line. Failing this, he should consider third move alternatives, in particular 3.Nf3xe5...

David Shire

Thus those of us who were rather cynical of this opening must admit that David has indeed done his homework. I have also received his analysis of 3.Nf3xe5... which goes on for many pages (which why I have not printed it with this article - lack of space) and so you will have to wait for the next edition for the continuation. I can tell you it is very in-depth.

RWR

WEST OF ENGLAND CHESS UNION OFFICERS

PRESIDENT Ken J BLOODWORTH 550 Budshead Road, Whitleigh, Plymouth,
Tel: Plymouth (0752) 779823

DEPUTY PRESIDENT Peter L MARSHALL 57 Janson Road, Southampton, SO1 5GL
Tel: Southampton (0703) 774464

HONORARY LIFE PRESIDENTS K J BLOODWORTH MRS J M PARKER

VICE PRESIDENTS J ANDERSON A C BROWN MRS R M BRUCE A W BUSBY P H CLARKE
A HOLLIS D C JARRETT F C KINGDON R O POWIS E G WALKER L T WALKER

GENERAL SECRETARY R (Bob) H JONES 40 Phillips Avenue, Exmouth, Devon
Tel: Exmouth (0395) 273665

TREASURER AND REGISTRATION OFFICER Richard W RENDELL 7 Wellesley Close,
Bowerhill, Melksham, Wiltshire SN12 6XT
Tel: Melksham (0225) 709619

GRADING AND RECORDS OFFICER R (Bob) C LUFFMAN 93 Kirkwall Road, Crownhill,
Plymouth, Devon. Tel: Plymouth (0752) 783861

CONGRESS SECRETARY Ron O POWIS Gordano, Farmhill Lane, Stroud, Glos.
Tel: Stroud (045 36) 2518

JUNIOR SECRETARY - no one at present, but Brian J FRANCIS is acting for the
time being. All Correspondence to him at 15 Chancellor
Road, Walton, Street, Somerset, BA16 9RX
Tel: Street (0458) 42068.

FIXTURE SECRETARY Frank C KINGDON 6 Blenheim Road, Weymouth, Dorset DT3 5AZ
Tel: Weymouth (0305) 812237

AUDITOR Ian R PICKUP 21 St Neot's Road, Sandy, Bedfordshire.
Tel: Sandy (0767) 81742

WECU COUNCIL REPRESENTATIVES

Cornwall Roger J GRIME and Ian M GEORGE

Devon Stuart M OWEN and George W WHEELER

Dorset Frank C KINGDON and Adrian D ROOKES

Gloucestershire Jack C B DATE and Chris R POWNEY

Hampshire Len C WALTERS and Stuart DEAN

Somerset Gary N JEPPI and Dave WOODRUFF

Wiltshire Harbinder S BAHIA and Andy D HURST

Bristol League E I S (Ian) BIDDICK and A T (Tyson) MORDUE

B C F Management Board and Council Representatives Len C WALTERS and
R (Bob) H JONES

WESTWARD HO! EDITOR: Richard W RENDELL

Please send any correspondence to me at: 7 Wellesley Close, Bowerhill,
Melksham, Wiltshire SN12 6XT

or ring me on Melksham (0225) 709619

The Scene: a gloomy hall on a dank afternoon of February 1988's Portsmouth Open. Wells, formerly of Oxford University, - Down, formerly of Cambridge University, has just been pinned up on the pairing board for the first round. My tournament preparation having consisted of a car journey from Devon with several leaping madmen - one of whom is playing the tournament in combat jacket, reflective shades and red clown's nose - punctuated by a pilgrimage to Stonehenge in search of Mighty Mystic Power. The 50 grading point advantage enjoyed by the Oxford IM is no cause for alarm.

White: P.K.Wells (2410/238)

Black: Nick Down (178)

1.Ng1-f3 Ng8-f6; 2.c2-c4 g7-g6; 3.Nb1-c3 Bf8-g7; 4.e2-e4 d7-d6; 5.d2-d4 0-0; 6.Bf1-e2 e7-e5; 7.Bc1-e3...

Locating a hole in Black's theoretical armour, and irritatingly failing to allow 7. 0-0 Nb8-c6; 8.Bc1-e3 Rf8-e8; 9.d4xe5 d6xe5; 10.Qd1xd8 Nc6xd8; 11.Nc3-b5 Nd8-e6; 12.Nf3-g5 Re8-e7; 13.Nb5xa7: Ne6-d4; 14.Be3xd4 e5xd4; 15.Na7xc8 Ra8xc8; 16.f2-f3 Nf6-d7; 17.Rf1-d1 Nd7-c5; 18.Be2-d3 Rc8-a8; 19.Hg5-h3 Ra8-a4; 20.Nh3-f4... $\frac{1}{2}$ - $\frac{1}{2}$ Stefansson-Down, Hastings Challengers 1987-88.

7...Nf6-g4;

Wells expressed concern about Nunn's 7...h7-h6; possibly because of the latter's 200 Elo point advantage.

8.Be3-g5 f7-f6; 9.Bg5-h4 Nb8-c6; 10.d4-d5 Nc6-e7; 11.Nf3-d2 Ng4-h6; 12.b2-b4?!... 12.g2-g4 Nh6-f7; 13.Qd1-c2 c7-c5; 14.Nd2-f1!?!... led to a white advantage in the unconvincing game Renet-Zs. Polgar, Brest/Paris 1987.

12...f6-f5?;

12...g6-g5; 13.Bh4-g3 f6-f5; 14.f2-f3 Ne7-g6; followed by 15.Ng6-f4 looks immense. 13.f2-f3 Bg7-f6; 14.Bh4-f2 Kg8-h8!;

Commencing an inspired policy of fiddling while Wells watches Black's antics mesmerised.

15.c4-c5 Ne7-g8;

"Profound Nertchain Manoeuvring" - Down. "Garbage!" - Analysis Room chorus.

16.Nd2-c4 Bf6-h4; 17.g2-g3?...

17. 0-0... leaves White much better. The Byzantine strategy is starting to take effect.

17...Bh4-e7; 18.c5xd6 c7xd6; 19.h2-h4!?!...

Horrible - but somehow logical.

19...f5xe4; 20.Nc3xe4 Ng8-f6; 21.Ne4xf6 Be7xf6; 22.g3-g4? Bf6-g7??;

Both players have missed the devastating 22...e5-e4; 23.Ral-c1 (23.g4-g5 Bf6-c3+;) e4xf3;

23.Nc4-d2 Nh6-g8;

May as well have fun with the remaining yo-yo knight...

24.h4-h5 g6-g5; 25.Nd2-e4 h7-h6;

Both players are too short of time to think up any more positional errors.

26.Qd1-c2 Rf8-f7; 27.Ral-c1 Qd8-f8; 28.Qc2-d3 Ng8-f6; 29.Bf2-e3 Nf6xe4; 30.Qd3xe4 Bg7-f6; 31.Kel-d2 Bf6-d8; 32.Rcl-c3 Bd8-b6;

The exchange of both the knights has prompted Black to shuffle Bishops.

33.Be2-d3 Qf8-g7; 34.Rhl-c1 Bc8-d7; 35.Kd2-e2...

White's flag is now on the brink of falling with a further 5 moves to go before the time control; Black has a minute or so, but is by now gibberishly incapable of calculation.

35...Ra8-f8; 36.Be3xb6 a7xb6; 37.Rc3-c7 Rf7-f4??;

Simply 37...Rf7xf3;

38.Qe4-g6 Rf8-f7; 39.Qg6xg7+ Kh8xg7; 40.Rc7xb7 Rf4xf3?;

Time control reached by both players unscathed. However, Black has made his last mistake, which proves costly.

41.Rb7xd7 Rf3-f2+; 42.Ke2-e1 Rf2-h2; 43.Rd7xf7+ Kg7xf7; 44.Rc1-c7+...

Black Resigns and retires to the bar.-

My thanks to P.K.Wells, Phillip Rossiter and Conor Bracken for incredulous comments, implausible tactics and attendance at the burial of Black's ego.

Nick Down

WORLD GIRLS CHESS CHAMPIONSHIPS 1988

By Jane Eastwood

This year's World Junior Chess Championship was played at Timisoara, Romania, in which ten English juniors, sponsored by Rank Xerox, were selected to take part. I was chosen as the Under 14 girl representative.

Accompanied by parents, coaches Owen and Cathy Hindle and Team Manager, John Tonkin, we arrived in Romania on 24 July. Our accomodation was an air-conditioned hotel, luxurious by Romanian standards. However, the catering left a lot to be desired...

The Tournament Hall was a short tram ride from the hotel, where we played a game an afternoon. There were two rest days during the fortnight. On one of the rest days we visited a spa nearby and a market where we bought some pottery.

In my section there were 24 competitors from 20 different countries. Out of the 11 games played, I scored 6 points, with 4 wins, 4 draws and 3 losses. My wins were against Spain, Denmark, Columbia and Israel. Tea Lanchava, the Soviet Girl, was the favourite and she duly won the gold medal.

My most enjoyable game was against Silvia Real of Spain, who played a rather passive Sicilian Dragon:

White: Jane Eastwood

Black: Silvia Real

1.e2-e4 c7-c5; 2.Ng1-f3 d7-d6; 3.d2-d4 c5xd4; 4.Nf3xd4 Ng8-f6; 5.Nb1-c3 g7-g6; 6.Bc1-e3 Bf8-g7; 7.f2-f3 0-0; 8.Qd1-d2 Nb8-c6; 9. 0-0-0 Nc6xd4; 10.Be3xd4 h7-h6?

This move is much too passive. Black must surely try to counterattack by 10...Bc8-e6; and then 11...Ra8-c8; etc.

11.Bd4-e3 Kg8-h7; 12.g2-g4 g6-g5; 13.h2-h4 g5xh4; 14.Rh1xh4 Rf8-h8; 15.Be3xh6 Kh7-g8; 16.Bh6xg7 Rh8xh4; 17.Qd2-g5 Rh4-h7?;

The exchange must be returned here by 17...Nf6-h7; 18.Qg4xh5 Kg8xg7; leaving Black a pawn down. However this move gives up a second piece for the rook.

18.Bg7xf6+ Kg8-f8; 19.Bf6-d4 f7-f6; 20.Qg5-d5 e7-e6; 21.Qd5-b3 e6-e5; 22.Bd4-e3 Qd8-e7; 23.Nc3-b5 Bc8-e6; 24.Bf1-c4 Be6xc4; 25.Qb3xc4 a7-a6; 26.Nb5xd6 Ra8-d8; 27.Be3-c5 Resigns.

The English Team was rather disappointed not to be bringing any medals home, but we all enjoyed the trip and the experience of living in Romania for 2 weeks.

Jane Eastwood

This year's Paignton Congress was held as usual at Oldway Mansion, Paignton from Sunday 4 September to 10 September 1988 by courtesy of Torbay Borough Council. I managed to get the week off from work and decided not only to go but to play as well - my first Congress outside Wiltshire and my first Congress for four years. I decided to play in a Morning American which left my afternoons free to watch the Premier Games and to sell Grading Lists and Westward Ho! subscriptions.

I have therefore written this report in similiar mode to Ian Pickup's report on the WECU Easter Congress - although not nearly as well - but have added some of my experiences through the Congress. I trust this meets with your approval.

Sunday 4 September 1988

Round 1

Left Melksham later than intended, at about 12 noon. Took back way to Taunton as shorter. Stopped at Taunton Service Station for lunch and onto Paignton. Arrived in Paignton around 3.30 pm. Nice easy trip down, nice weather even if last week of Summer. Bit apprehensive of playing.

On arriving found my grade was one of the highest in the Morning American sections and therefore am in American A. (An American Tournament by the way is an all-play -all with 8 players, 7 rounds) Book into a B&B round the corner - £8.50 a night, not bad. Am very impressed with Oldway Mansion.

Competition starts. Am playing Jack Spiegel with the white pieces. Play Queen's Gambit with c4-c5 early on as opening well-known to me. Get my bishop pair on f4 and g4 and JS has to give up a piece to get counterplay. Try to be clever by repeating the position to use up moves although not really in time trouble.

However, I find that I have repeated the position 3 times and what's worse, JS is a BCF arbiter! He of course claims the draw. Involve the Controllers (what a pest!) but JS of course correct. Draw given. Feel a right TWAT. Sick as a parrot. Game haunts me all night.

Premier

Premier attracts 42 players including Keith Arkell (I.M.), Susan Arkell (WIM), Gary Lane, P.C.Griffiths (Postal I.M.) plus the usual Congress Crew - Collier, Mordue, Wheeler x 2, Moore, Shutler, Easton and Headlong.

Tournament is seeded with the stronger players playing the weaker players by Grade order. No real shocks except Griffiths loses to McSheehy. Wins for: K.Arkell, McSheehy, Lane, Mordue, Shutler, Hempson, Collier, Elliston, Parr, J.Wheeler, Lamb, Davey, Bramley, G.Wheeler, Scott and Norman. Two Games left outstanding, Susan Arkell v Stokes and Headlong v Bowley.

Ken Norman beat J.Walker very quickly to record the first win:

K.I.Norman v J.Walker

1.Ng1-f3 d7-d5; 2.c2-c4 e7-e6; 3.d2-d4 Ng8-f6; 4.Nb1-c3 c7-c5; 5.c4xd5 c5xd4; 6.Qd1xd4 e6xd5; 7.e2-e4 Nb8-c6; 8.Bf1-b5 Bc8-d7; 9.Bb5xc6 Bd7xc6; 10.e4xd5 Nf6xd5; 11. 0-0...

White has given up his bishop for Black's queen's knight and totally opened up the game. He has further got his King safe whilst Black's is still in the centre. The e-file is now open and ready to be attacked.

11...Nd5-f6; 12.Qd4-e5+ Bf8-e7; 13.Rf1-e1 Ke8-f8;

Black's position has taken a turn for the worst. He has given up any hope of Castling as he must get his King out of the Centre and off the pin.

14.Bc1-f4 g7-g5?;

A bad mistake in a poor position. He must get some counterplay but this opens him up like a tin of sardines.

15.Ra1-d1 Qd8-e8; 16.Bf4xg5 Bc6xf3; 17.Bg5-h6+ Kf8-g8; 18.Qe5-g5 mate.

Another first round winner was John Wheeler:

J.F.Wheeler v M.Page

1.d2-d4 Ng8-f6; 2.c2-c4 e7-e6; 3.Ng1-f3 Bf8-b4+; 4.Nb1-c3 b7-b6; 5.e2-e3 Bc8-b7;
6.Bf1-d3 O-O; 7. O-O d7-d5; 8.c4xd5 e6xd5; 9.Qd1-c2 c7-c5; 10.d4xc5 b6xc5;
11.Rf1-d1 Qd8-e7; 12.b2-b3 Nb8-c6; 13.Bc1-b2 Rf8-d8; 14.Nc3-a4 Nf6-e4;
15.Ra1-c1 Ra8-c8; 16.a2-a3 Bb4-a5; 17.Na4xc5 Ne4xc5; 18.Qc2xc5 Qe7xc5;
19.Rclxc5 Ba5-b6; 20.Rc5-c2 Nc6-a5; 21.Rc2xc8 Rd8xc8; 22.Nf3-d2 Rc8-d8;
23.Kg1-f1 d5-d4; 24.e3-e4 Rd8-e8; 25.b3-b4 Na5-c6; 26.f2-f4 a7-a5; 27.b4-b5
Nc6-d8; 28.g2-g3 Nd8-e6; 29.Nd2-c4 Bb6-d8; 30.Nn4-d6 Re8-e7; 31.e4-e5 Bb7-f3;
32.Rd1-c1 g7-g6; 33.Rc1-c8 Re7-d7; 34.b5-b6 h7-h5; 35.Bd3-a6 Resigns.

Monday 5 September 1988

Round 2

Spent all night dreaming about game night before. Not much sleep. Game starts at 9.30 am. Like going to work! Black against Malcolm Horne of Devon. Play a Dragon's Sicilian which is well-known to me. Complete blunder after only 11 moves loses exchange. However, battle on - what else is there to do at 10 am on a Monday morning? Fluster him enough to persuade him to give up a piece for a pawn, but still positionally lost. Position repeated 3 times again but don't realise it! Last 20 moves are spent with White trying to establish three connected passed pawns. When he finally does so he falls into a trap and gets mated.

Premier

Round 2 must have created great pleasure for the Controller, Steve Boniface as all top 8 boards went as seeded with wins for K.Arkell, Lane, Mordue, Shutler, Hempson, Collier, Parr and Elliston leaving them all on 2 points. Lower down the order there was a shock for Susan Arkell when she lost to Gerald Moore whilst there were no fewer than 8 draws in the remaining 12 games. Headlong succeeded in obtaining his second adjourned game. Could he play in all the sessions of the tournament?

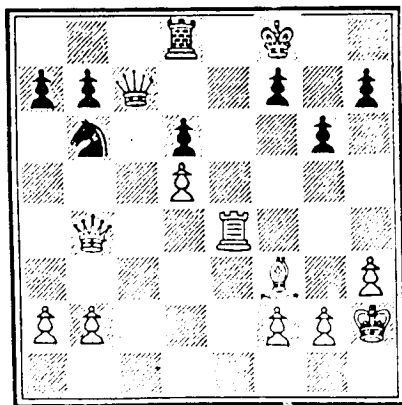
H.Lamb v K.Arkell

1.Ng1-f3 b7-b5; 2.g2-g3 Bc8-b7; 3.d2-d4 e7-e6; 4.Bf1-g2 c7-c5; 5.c2-c3 Ng8-f6;
6. O-O Bf8-e7; 7.Bc1-g5 h7-h6; 8.Bg5xf6 Be7xf6; 9.Nb1-d2 c5xd4; 10.c3xd4 O-O;
11.Ra1-c1 Nb8-c6; 12.Nd2-e4 Ra8-b8; 13.Ne4-c5 Bb7-a8; 14.Nf3-e5 Bf6xe5;
15.d4xe5 Nc6xe5; 16.Bg2xa8 Rb8xa8; 17.Qd1-d6 Ne5-c4;

It seems that White has sacrificed a pawn but what has he got for his troubles? Very little. 18.Qd6xd7 Qd8xd7; 19.Nc5xd7 Rf8-d8; 20.Nd7-c5 Nc4xb2; leaves Black a pawn up and has activated his pieces.

18.Qd6-a6 Qd8-b6; 19.b2-b3 Qb6xc5; 20.b3xc4 b5xc4; 21.Rc1xc4 Qc5-b6; 22.Qa6-a4
d7-d5; 23.Rc4-b4 Qb6-c7; 24.Rf1-b1 Ra8-b8; 25.e2-e3 g7-g6; 26.h2-h4 Rf8-c8;
27.Qa4-b3 Rb8xb4; 28.Qb3xb4 Qc7-c2; 29.Qb4-b7 Kg8-g7; 30.Rb1-b2 Qc2-d1+;
31.Resigns.

Mate cannot be avoided. E.g. 31.Kg1-h2 Rc8-c1; 32.g3-g4 Qd1-h1+; 33.Kh2-g3
Rc1-g1+; 34.Kg3-f4 Qh1-e4++.



Moore, White against Susan Arkell, reached this position after 24...Qc1-c7; and the game continued as follows:

25.Qb4-d4...

Threatening 26.Qd4-h8 mate. Thus:

25...Kf8-g8; 26.Qd4-e3 Nb6-c8;

Not 26...Nb6xd5?; 27.Re4-e8+... winning the knight. Black must get his knight into play.

27.h3-h4 Qc7-c5; 28.Qe3-g5 Rd8-f8;
29.h4-h5...

This gives up the f-pawn but keeps up the pressure on the King's defence.

29...Qc5xf2; 30.Qg5-f6 Qf2-d2; 31.Re4-f4 Nc8-e7;

This move loses the piece. Of course, White cannot take it immediately but instead threatens mate in one. However what else could she do? The ungainly 31...g6xh5; loses to 32.Bf3xh5... and she cannot defend against the dual threat of 33.Bh5xf7+ and 33.Rf4-g4+...

32.h5-h6 Ne7-f5; 33.Rf4xf5! Qd2xh6+; 34.Rf5-h5! Qh6-e3; 35.Rh5-h4 Rf8-c8; 36.Rh4-f4 Rc8-c7; 37.Qf6xd6 Resigns.

The rate of play in the Premier is 36 moves in 2 hours and White has obviously reached the time control with only a short time left otherwise Black would have resigned a couple of moves earlier.

Griffiths after his surprise loss to McSheehy in the first round, failed to win again, only drawing with M.Sellars thanks to a perpetual check after a rook sacrifice. Blow meanwhile quickly pulled up to 1 point after his first round defeat to Lane when his opponent, Cook, gifted him a rook.

Tuesday 6 September 1988

Round 3

Another beautiful day. Weather has been hot all week and in fact remains so right to the last day. White today against E.Winn of York. Another Queen's Gambit, this time accepted. Get into a right mess and use up most of my time allowance getting nowhere fast. However, another generous opponent who gives away all his advantage for no apparent reason. Another win leaves me equal top of the Section with 2½ points. Quite ridiculous!

Premier

Wins for K.Arkell over Hempson and Lane over Collier after an adjournment leaves them clear on 3 points as Mordue draws with Elliston and Shutler with Parr. Arkell's win is even more impressive when you consider that he played 60 moves in little over an hour whilst his opponent took over 3 hours. Lane's meanwhile was a peach although Collier will claim that he should have won but slipped up in time-trouble when he had the advantage. However, the game failed to win the book prize for best game, which went to Headlong for his win over W.Hicks, which I print below the Collier/Lane game:

D.O.Collier v G.Lane

1.d2-d4 Ng8-f6; 2.c2-c4 g7-g6; 3.Nb1-c3 Bf8-g7; 4.e2-e4 O-O; 5.Bc1-e3 d7-d6; 6.f2-f3 e7-e5; 7.d4-d5 Nf6-h5; 8.Qd1-d2 Qd8-h4+!?!; 9.g2-g3 Nh5xg3; 10.Qd2-f2 Ng3xf1 11.Qf2xh4 Nf1xe3; 12.Qh4-f2 Bg7-h6; 13.Nc3-d1 Ne3xc4;

All played in a few minutes by Lane. It caused quite a stir to say the least! Apparent this sacrifice was quite famous as it had been played by a famous Grandmaster but I can't remember his name! I think it was someone like Korchnoi. Perhaps someone will enlighten me.

I had the opportunity of speaking to Dave Collier at this stage who, to his credit, wasn't particularly worried by this sacrifice but admitted that he hadn't seen it before and therefore Lane would have the upper hand.

It was obvious that Lane had prepared this opening in advance without of course knowing who he was going to have the chance to play it against.

14.Qf2-c2 Nc4-b6; 15.Qc2xc7 Nb8-a6; 16.Qc7xd6 f7-f5; 17.h2-h4 f5xe4; 18.h4-h5 Bh7-d2+; 19.Kel-f1...

Not 19.Kelxd2? Nb6-c4+; winning the queen back. Both players certainly seem to be mixing it. Black has 2 bishops and a pawn for his queen and both Kings are in the open although Black's the safer of the two.

19...Bc8-f5; 20.Qd6xe5 e4xf3; 21.Qe5-d4 Bd2-g5; 22.Nd1-e3 Bg5-f6; 23.Qd4-d2 Bf5-d7; 24.Nglxf3 Bf6-g5; 25.h5xg6 h7-h6;

Surprisingly, this move puts White under a lot of pressure in the later stages of the game. Quite an insight by Lane. He foresees that he can win the g-pawn back in due course and prefers to keep his h-pawn on the h-file.

I understand that Collier gets into bad time trouble now as he has 11 moves to the time control and has a Queen and a pawn for the bishop pair and must surely be better. However;

26.Kf1-g2 Nb6-c4;

Suddenly the game has become very difficult for Collier. To save his Queen he must give up his knight. Instead he gives up the Queen for the 2 pieces, leaving him the g-pawn up which Black can recapture fairly easily together with the d-pawn. So where did Collier go wrong?

Perhaps he should have played 26.Kf1-e2... but this isn't very nice either. There so many traps here. 26...Nb6-c4; looks best as 26...Bg5xe3; 27.Qd2xe3 (27.Ke2xe3... allows Nb6-c4+) Ra8-e8; 28.Nf3-e5... makes life difficult for Black as the obvious 28...Nb6-c4; allows 29.Qe3xh6... and White can avoid the perpetual checks by getting onto c1.

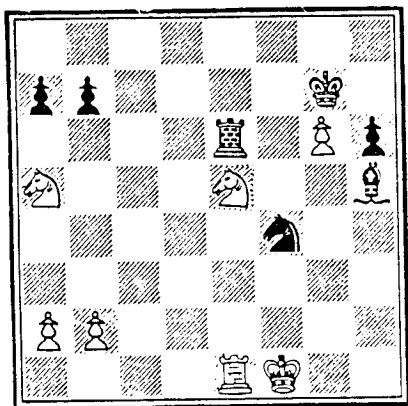
The attempted escape of 27.g6-g7 Kg8xg7; 28.Qd2-d4+... loses to 27...Rf8xf3!; Thus...

27.Ne3xc4 Bg5xd2; 28.Nc4xd2 Kg8-g7; 29.Ra1-e1 Ra8-e8; 30.Nd2-e4 Bd7-g4; 31.Rh1-f1 Na6-b4; 32.Ne4-d2 Nb4xd5; 33.Nf3-e5 Rf8xf1; 34.Kg2xf1 Bg4-h5; 35.Nd2-c4 Re8-e6; 36.Nc4-a5 Nd5-f4; 37.Re1-e3...

The players have reached the time control and White's next move was sealed. As mentioned above Black will collect the g-pawn. Meanwhile there are several threats which White must cover and thus the next move of 37.Re1-e3 is more or less forced. This means that Lane has the same time as Collier to look at the position as he knows that everything else loses immediately. Of course White cannot collect the b-pawn as he loses his b-pawn to Re6-b6.

I was fortunate enough to sit in with the "Collier Camp" analysing the position and the general concensus was that he should resign now! However, the ever optimist, Gerald Moore, kept on saying he still had chances of a draw.

37.Re1-e3 Nf4xg6; 38.Ne5-c4 Re6-f6+;



A surprise for Collier. We all expected Lane to swop off the rooks as this was considered in his interest to do so. In fact the retention of the rooks wasn't even looked at. Collier was now on his own.

39.Kf1-e1 b7-b6; 40.Na5-b3 Bh5-g4; 41.Nb3-d2 h6-h5; 42.Re3-a3 Rf6-f7; 43.Nc4-d6 Rf7-e7+; 44.Ke1-f1 Kg7-h6; 45.Nd2-f3 Re7-d7 (Not 45...Bg4xf3; 46.Nd6-f5+); 46.Ra3-d3 Rd7-c7; 47.Nf3-d4 Ng6-f4; 48.Rd3-e3 Rc8-c1+; 49.Rf1-f2 Rc1-d1; 50.Re3-e4 Nf4-d3+; 51.Kf2-g3 Nd3-c5; 52.Re4-f4 Rd1-d3+; 53.Kg3-g2 Kh6-g5; 54. Resigns.

White must lose something. Brilliantly played at the end by Lane.

Headlong, in the sessions between round 2 and 3 managed to complete his two outstanding games, losing the first and drawing the second. In fact all the previous round games were complete by the start of the third round. Susan Arkell had to settle with a draw against G.Stokes in round 1, a game which went on for 103 moves and several additional sessions. At the end she failed to crack Stokes' defence in a knight and two pawns against knight a pawn despite getting one of them onto the seventh rank.

Headlong made up for his two previous long games by a great win over W.Hicks:

T.Headlong v W.Hicks

1.d2-d4 Ng8-f6; 2.Ng1-f3 g7-g6; 3.c2-c4 d7-d5; 4.Nb1-c3 Bf8-g7; 5.c4xd5 Nf6xd5; 6.Qd1-b3 Nd5-b6; 7.Bc1-g5 c7-c6; 8.Ra1-d1 O-O; 9.e2-e4 Bc8-g4; 10.Bg5-e3 Bg4xf3; 11.g2xf3 Nb8-d7; 12.Bf1-e2 Qd8-b8; 13.f3-f4 e7-e6; 14.h2-h4 h7-h5; 15.Rh1-g1...

This move means that White cannot now castle but it became obvious that he intended to leave his King in the centre when he played 10.Bg5-e3. White has instead an open file to play along together with pressure on h5 and f5 and the centre well fortified.

15...Nd7-f6; 16.Ke1-d2 Nb6-c8; 17.f4-f5...

A sacrifice of a pawn to open up Black's defence round his King. This needs to be

17...e6xf5; 18.e4xf5 Kg8-h7;

Black refuses the offered pawn as this would totally open him up and instead seems to be holding out. However:

19.f5xg6 f7xg6; 20.Rg1xg6! Nc8-e7;

20...Kh7xg6; leads to mate: 21.Be2-d3+ Nf6-e4; 22.Bd3xe4+ Kg6-f6; 23.Be3-g5 mate.

21.Rg6-g2 Qb8-d6; 22.Rd1-g1 Nf6-g4; 23.Nc3-e4 Qd6-d7; 24.Bf2xg4 h5xg4; 25.Rg2xg4 Ne7-f5; 26.Rg4-g5 Bg7-h6;

This move leads to a neat mate:

27.Qb3-g8+! Rf8xg8; 28.Ne4-f6+ Kh7-h8; 29.Rg5xg8+ Ra8xg8; 30.Rg1-g8 mate.

So at the end of round 3 K.Arke11 and Lane were the only players with 100% and must play each other in the next round. On 2½ points came Mordue, Elliston, Shutler, Parr, Stokes (who beat J.Wheeler) and Bowley (who overnight beat Headlong in round 1 adjournment and Moore). On 2 points were: Hempson, Collier, Lamb, G.Wheeler and Scott. Susan Arkell at last won (against Stegeman) to reach 1½ points.

Wednesday 7 September 1988

Round 4

Another bad night's sleep - this time the cause is terrible toothache. Decide a visit to the dentist first thing is a must otherwise I might as well go home. Get O.K. with Controller, who is staying in same Guest House. Advise that I will default my game. Visit local dentist who sees me within half an hour. Have tooth out and am back at Guest House by 9.40 am. Landlady insists that I have breakfast as "You look so pale". Arrive at Congress at 10.00. Sure enough I have been defaulted but as you normally have an hour before game is defaulted and because I find that my opponent is still there I approach Controller asking whether I can still play. Only if my opponent agrees is the reply. When opponent hears my plight he readily agrees to play (after all why is he at Congress?) and also insists that I am not docked half an hour. What a Sport!

Have you ever played a game of chess after having a tooth out? You should try it sometime! At first I have no feeling in my mouth; the tooth doesn't stop bleeding and after about 2½ hours (just as the game is getting complicated) the local anaesthetic wears off and I have a terrific pain in my mouth.

Decide to play for a draw after move 3 and after 4 hours play manage to obtain it. Mind you, my thanks to my opponent, E.B.Sandercock for allowing me to play.

Premier

Lane as expected duly met Arkell and not to be outdone, Arkell sacrifices his Queen - game given below, which won the winner the secondary Book Prize:

G.Lane v K.Arke11

1.e2-e4 c7-c6; 2.d2-d4 d7-d5; 3.Nb1-d2 d5xe4; 4.Nd2xe4 Nb8-d7; 5.Bf1-c4 Ng8-f6; 6.Ne4-g5 e7-e6; 7.Qd1-e2 Nd7-b6; 8.Bc4-b3 h7-h6; 9.Ng5-f3 a7-a5; 10.a2-a4 c6-c5; 11.Bc1-f4 Bf8-d6; 12.Nf3-e5 Nb6-d5; 13.Qe2-b5+ Ke8-e7; 14.d4xc5 Nd5xf4; 15. 0-0-0 Bd6xe5; 16.Rd1xd8 Rh8xd8; 17.c5-c6 Nf4-d5; 18.c6xb7 Ra8-b8; 19.b7xc8=Q Rd8xc8; 20.Qb6-d3 Nd5-b4;

The smoke clears a bit but the scrapping hasn't by any means ended yet. At this moment in time Black has a rook and knight for a queen and pawn but has active pieces whilst White has two still left at home. This is a very aggressive line of the Caro-Cann, an opening I know little about but always thought it was a passive slow game.

21.Qd3-e2 Nb4xc2!; 22.Bb3xc2 Be5xb2+; 23.Kc1-d2 Nf6-d5; 24.Ng1-h3 Bb2-c3+; 25.Kd2-d3 Rb8-b4; 26.Qe2-f1 Rb4-d4+; 27.Kd3-e2 Rd4-d2+; 28.Ke2-f3 Rd2xc2;

Black regains his piece which he gave up on move 21 and despite lacking his queen has a totally won game. What can White do? His King is being chased round the board. Can he get it safe?

29.g2-g3 Bc3-d4; 30.Qf1-a6...

Not 30.Kf3-g2 Nd5-e3+; winning the queen.

30...Rc8-c3+; 31.Kf3-e4 Bd4xf2; 32.Nh3xf2 Rc3-e3+; 33.Ke4-d4 Rc2xf2; 34.Qa6xa5 Re3-e2; 35.Qa5-a7+ Ke7-f6; 36.a4-a5 Re2-c2; 37.Qa7-b8 Rf2-d2+; 38.Kd4-e4 Rc2-c4+; 39.Ke4-f3 Rc4-c3+; 40.Kf3-g4 Rd2-d4+; 41.Kg4-h5 Nd5-e3; 42.Resigns.

White cannot stop the mate. E.g. 42.Qb8-b6 Rd4-d5+; 43.Kh5-h4 Rc3-c4+; 44.g3-g4 Rc4xg4+; 45.Kh4-h3 Rd5-h5 mate.

Mordue and Elliston both move into second equal place on 3½ points with wins over Parr and Bowley respectively. Joining Lane on 3 points were: Stokes and Shutler (who drew), Lamb (who beat Scott) and Collier (who beat Finn). Susan Arkell continued her recovery by beating Menadue to reach 2½ points together with Moore who beat Norman plus several others, including Griffiths who beat Vaughan:

P.C.Griffiths v D.O.Vaughan

1.e2-e4 e7-e5; 2.Ng1-f3 Nb8-c6; 3.Bf1-b5 Ng8-f6; 4.d2-d3 Nc6-e7; 5.c2-c3 Ne7-g6; 6. 0-0 Bf8-e7; 7.d3-d4 c7-c6; 8.Bb5-c4 d7-d6; 9.Rf1-e1 0-0; 10.Bc4-b3 Qd8-c7; 11.Nb1-d2 Bc8-g4; 12.h2-h3 Bg4-d7; 13.Nd2-f1 Ra8-d8; 14.Nf1-g3 h7-h6; 15.Ng3-f5 Rf8-e8;

After a very slow, rather unusual start the game suddenly springs to life.

16.Bclxh6 g7xh6; 17.Nf5xh6+ Kg8-g7; 18.Nh6xf7 Re8-h8;

A most unusual move. At first I thought he must have meant Rd8-a8 saving the rook but no instead he offers a choice! I must admit I don't quite see the logic in this move. I suppose he could be intending a counter-sacrifice on h3 but his pieces are all on the wrong squares.

19.d4xe5 d6xe5; 20.Nf3-g5 Ng6-f4; 21.Qd1-f3 Nf6-h5; 22.Nf7xd8 Be7xd8; 23.h3-h4...

White's pieces have all started to become active and he will shortly be moving his rooks onto the d-file. This last move has stopped any hopes of a counter-sacrifice on h3.

23...Bd8xg5; 24.h4xg5 Kg7-g6; 25.Ral-d1 Kg6xg5; 26.Qf3-e3 Kg5-f6; 27.Qe3-c5 Rh8-e8; 28.Rd1-d6+ Kf6-g7; 29.Rel-d1 Bd7-g4; 30.Rd1-d2 a7-a6;

Another rather strange move. But what else can he do? As mentioned earlier, White has doubled up his rooks on the d-file and the end must surely be in sight...

31.Bb3-d1 Bg4-c8; 32.Bd1xh5 Nf4xh5; 33.g2-g3 Nh5-f6; 34.Qc5-e3 Kg7-g6; 35.Rd6xf6+ Resigns.

A neat finish. If 35...Kg6xf6; then 36.Qe3-h6 is mate. Any other move results in the loss of the knight and eventually into mate or the loss of further material.

Thursday 8 September 1988

Round 5

At last I start a game feeling refreshed. Spent most of previous 24 hours sleeping. Last night was the civic reception with Torbay Mayor. Got up to go to it but big mistake. Went back to bed after only an hour. Even overslept in morning. Get to board 15 minutes late. White against B.Turner of Totnes. Find that I am in the lead on my own as player who was equal with me after round 3 lost his adjourned game overnight when winning. Good job played yesterday!

Not much of a game - a draw agreed after 37 moves having simplified game too early. Still, guaranteed to still be top although all to do as have Black in both of the last rounds.

Premier

Elliston had the misfortune to be paired against Arkell. Arkell with the White pieces always had the game under control and won in the main session having taken only 80 minutes for his 41 moves. Meanwhile, following his loss to Arkell, Lane had the chance to reestablish himself when playing Mordue:

T.Mordue v G.Lane

1.e2-e4 e7-e5; 2.Ng1-f3 Nb8-c6; 3.Bf1-b5 a7-a6; 4.Bb5-a4 Ng8-f6; 5. 0-0 Bf8-e7; 6.Rf1-e1 b7-b5; 7.Ba4-b3 0-0; 8.c2-c3 d7-d6; 9.h2-h3 Nc6-a5; 10.Bb3-c2 c7-c5;

A good old standard Ruy Lopez.

11.d2-d4 Qd8-c7; 12.Nb1-d2 c5xd4; 13.c3xd4 Bc8-d7; 14.Nd2-f1 Ra8-c8; 15.Bc2-d3 Na5-c6; 16.Bc1-e3 e5xd4; 17.Nf3xd4 Nc6-e5; 18.Ra1-cl Qc7-b7; 19.Rclxc8 Rf8xc8; 20.Bd3-b1 Ne5-c4; 21.Be3-cl g7-g6; 22.Nf1-g3 d6-d5; 23.e4-e5 Nf6-e8;

White has taken charge of the game but how can he convert his advantage into the full point?

24.e5-e6 f7xe6; 25.Bb1xg6!...

A neat sacrifice which Black must really take.

25...h7xg6; 26.Qd1-g4 Nc4-e5; 27.Relxe5! Rc8xc1+; 28.Kg1-h2 Ne8-g7; 29.Qg4xg6 Bd7-e8; 30.Qg6-h6 Qb7-c7; 31.f2-f4 Be8-f7; 32.Nd4-f3 Rcl-c4; 33.Nf3-g5 Be7xg5; 34.Re5xg5 Bf7-e8; 35.Qh6xe6+ Qc7-f7; 36.Qe6-h6 Rc4-c6;

Time control reached and Black seems to be holding his opponent, with all his pieces taking part. However...

37.Ng3-f5...

Black must now give up the exchange. Of course he cannot take the knight as he gets mated on g7 whilst the clever 37...Rc6-g6; loses to 38.Rg5xg6 Qf7xg6; 39.Nf5-e7+... and Rc6-c7 loses the queen for the rook, leaving him a queen for a rook and bishop down. Thus...

37...Rc6xh6; 38.Nf5xh6+ Kg8-h7; 39.Nh6xf7 Be8xf7; 40.Rg5-e5 d5-d4; 41.Re5-e7 Bf7-e6; 42.Kh2-g1 Kh7-g6; 43.g2-g4 d4-d3; 44.Kg1-f2 Be6xa2; 45.Re7-a7...Resigns.

This looks a rather premature resignation by Black but he knows he has a lost game here with no chances of counterplay. Perhaps he is too good a player to face the endgame - a lesser player would have probably played on here but Lane cannot afford to lose face.

So this consecutive defeat finish off any hopes Lane may have sported to win the tournament and he will have to win his last two games to get in the Prize Money. Mordue, meanwhile, has good chances now to win the Congress for the second year running as he must now play Arkell in the next round with the White pieces. Thus after 5 rounds, Arkell had 5 points and Mordue, second, on 4½. Collier, meanwhile, resumed winning ways by beating Stokes to move into third place on 4 points whilst Shutler and Lamb lost further ground by drawing. This left them on 3½ points along with Armstrong (who beat Susan Arkell), Griffiths (who beat George Wheeler), Hempson (who beat Bowley), Moore (who beat McSheehy) and of course Elliston. Everyone by this stage had got off the mark.

Friday 9 September 1988

Round 6

Back to equal first today. Know that I have got to win today and will have to "mix it" as my opponent is a very aggressive player who has scored all of his 3 points with wins as White. I print the game below as it is not littered with mistakes:

W.T.Franklin v R.W.Rendell

1.e2-e4 d7-d6; 2.d2-d4 Ng8-f6; 3.Bf1-d3 g7-g6; 4.f2-f4 Bf8-g7; 5.c2-c3 e7-e5;

A good 10 minutes thought went into this move. I am not an avid fan of the Pirc as I find it rather passive. As mentioned above I have to play aggressively and I have already seen my opponent slaughter a Dragon's Sicilian - my favourite opening. 3.Bf1-d3... followed by 4.f2-f4... are aggressive moves and must be countered. Of course, 6.f4xe5 d6xe5; 7.d4xe5 Nf6-g4; is very satisfactory for Black. However, my opponent has a surprise for me:

6.f4xe5 d6xe5; 7.Ng1-f3 e5xd4; 8. 0-0...

A pawn sacrifice. Do I take it? or perhaps get the King safe first?...

8... 0-0; 9.Bc1-g5...

The offer is still there, but e4-e5 is threatened.

9...d4xc3; 10.Nb1xc3...

Of course White cannot play 10.e4-e5... as 10...c3xb2; 11.e5xf6 Bg7xf6; wins.

10...d8-d6; 11.Kg1-h1 Nb8-d7; 12.Nc3-b5 Qd6-b6;

An hour played, of which White has taken only 11 minutes, Black the rest. Not a

very happy position for Black but he is hanging on. White for his advantage has many weak spots. I had the feeling at this stage the game won't go the distance and therefore the fact that I was taking a long time for each move wasn't a worry so long as I made the best move each time.

White meanwhile took 25 minutes over his next move and played:

13.a2-a4 a7-a5;

14.a4-a5... mustn't be allowed at any cost and therefore this move must be played. It also means that White must go back to the drawing board... Another long pause, then...

14.Qd1-e2...

Keeping the pressure on e5 thus the counter:

14...Nf6-g4; 15.Ra1-c1 c7-c6; 16.Nb5-d6...

Suddenly White's pieces are swarming over my defence. 14...Nf6-g4; has allowed Black access to e7, winning the exchange. 16...f7-f6; allows 17.Bd3-c4+... and opens the King up. Things are becoming very tricky. However, White's Queen is not well placed on e2 and could be attacked. Perhaps it is better to give up the exchange and obtain a bishop and two pawns for the rook. Thus:

16...Qb6xb2; 17.Nf3-d2...

White decides he doesn't want to exchange the Queens off (his prize possession) but allows Black time to get his pieces active.

17...Ng4-e5; 18.Bg5-e7 Ne5xd3; 19.Qe2xd3 Nd7-e5; 20.Qd3-e3...

The mistake I had been waiting for. I am sure many players would have fallen for this as the position looks so innocent. 20.Qd3-e2... is the best move here but I am sure White didn't want to play this as his knight is now pinned to his Queen which he doesn't want to swap off and it will take him several moves to get his pieces moving again.

20...Ne5-g4; 21.Qe3-e2 Qb2-e5!; 22.Resigns.

Mate on h2 is threatened together with the bishop on e7. 22.g2-g3 Qe5xe7; 23.Nd6xc8 Ra8xc8; 24.Qe2xg4... leaves Black two pawns up and White with no counter play at all.

Premier

Mordue found Arkell in his best form and suffered the same fate as those who had gone before thus leaving Arkell in an unassailable position. Collier missed his chance of moving up to sole second place when he drew against Griffiths. This left Arkell on 6 points and Mordue and Collier on 4½. Next came Griffiths, Moore and Lamb (who drew), Elliston and Shutler (who agreed a draw after 17 moves in an open position), Hempson and Armstrong (who drew) and Lane (who beat Parr), all on 4 points.

Susan Arkell up to this time had had a poor tournament but she must have derived some pleasure from her quick win against Finn:

S.Finn v S.Arkell

1.e2-e4 c7-c6; 2.c2-c4 d7-d5; 3.e4xd5 c6xd5; 4.d2-d4 Ng8-f6; 5.Nb1-c3 g7-g6; 6.Qd1-b3 Bf8-g7; 7.c4xd5 0-0; 8.a2-a4 e7-e6; 9.d5xe6 Bc8xe6; 10.Bf1-c4 Nb8-c6!; 11.Bc4xe6 Nc6xd4; 12.Be6xf7+ Rf8xf7; 13.Qb3-d1 Nf6-g4!; 14.Ng1-f3 Nd4xf3+; 15.g2xf3 Bg7xc3+; 16.Resigns.

16.b2xc3 Qd8xd1+; 17.Kelxd1 Ng4xf2+; wins a rook. After just 17 moves the board looks extremely bare.

This brought Susan up to 3½ points and an outside chance of winning prize money. Rety, after defeats in all the first three rounds, pulled himself up to 50% when Norman dropped a piece. Could he finish with more than 50%?

T.Mordue v K.Arkell

1.e2-e4 c7-c5; 2.Ng1-f3 e7-e6; 3.d2-d4 c5xd4; 4.Nf3xd4 Nb8-c6; 5.Nb1-c3 a7-a6; 6.Bc1-e3 Qd8-c7; 7.Bf1-e2 Ng8-f6; 8. 0-0 Bf8-e7; 9.f2-f4 d7-d6; 10.Kg1-h1 Bc8-d7;

11.Qd1-e1 0-0; 12.Qe1-g3 Nc6xd4; 13.Be3xd4 Bd7-c6; 14.Be2-f3 Rf8-d8; 15.Ra1-d1 g7-g6; 16.Rf1-e1 b7-b5; 17.Qg3-f2 Ra8-b8; 18.e4-e5 Nf6-e8;

White seems to have changed his mind about a Kingside attack and has gone for the centre. However, this is where Black's pieces are and it appears that he is playing into Black's hands. Arkell has made no attempt to attack so far in the game but rather seems to be biding his time.

19.Bf3xc6 Qc7xc6; 20.Nc3-e4 d6xe5; 21.f4xe5 Ne8-g7; 22.Ne4-f6+ Be7xf6;
23.e5xf6 Ng7-f5; 24.Bd4-e5 Rb8-c8; 25.h2-h3 h7-h5; 26.c2-c3 h5-h4;
27.Qf2-f4 Rd8-d5; 28.Kh1-h2 Rc8-d8;

White has run out of ideas whilst Black is continuing to activate his pieces and improve his position. Notice that all Black's pawns (except one) are on White squares making White's Black-squared bishop useless.

29.Rd1xd5 Qc6xd5; 30.a2-a4 b5xa4; 31.Qf4xa4 Qd5-d2; 32.Qa4-e4 Qd2xb2;
33.Re1-b1 Qb2-f2; 34.Be5-c7 Rd8-d2; 35.Rb1-g1 Qf2-c5; 36.Qe4-a8+ Kg8-h7;

The time control has been reached but because of Black's quick play it is in White's interest to carry on playing rather than seal a move now. In anycase, he has the makings of a lost game.

37.Bc7-f4 Rd2-f4; 38.Qa8-e8 Rf2xf4; 39.Qe8xf7+ Kh7-h6; 40.Qf7-g8...

Threatening f6-f7-f8=Q. But Black has a very neat sacrifice to finish off the game:

40...Qc5xg1+!; 41.Kh2xg1 Nf5-g3; 42.Qg8-f8+ Kh6-h5; 43.Qf8-c5+ g6-g5;
44.Kg1-h2 Rf4-f1; 45.Qc5-e7 Rf1-h1 mate.

G.Lane v F.Parr

1.e2-e4 d7-d6; 2.d2-d4 Ng8-f6; 3.Nb1-c3 g7-g6; 4.Bc1-e3 c7-c6; 5.Qd1-d2 Qd8-a5;
6.Bf1-d3 Nf6-g4; 7.Be3-g5 Bf8-g7; 8.f2-f3 Ng4-f6; 9.Ng1-e2 Nb8-d7; 10.Bg5-h6 Bg7xh6;
11.Qd2xh6 Qa5-h5; 12.Qh6-d2 0-0; 13.h2-h4 Qh5-a5;

Black's excessive moving of his Queen has left ^{him} way behind in development and it looks like he has castled into a nasty attack.

14.h4-h5 g6xh5; 15.Qd2-h6 Rf8-e8; 16.Ne2-g3 Nd7-f8; 17.e4-e5...

This move gives up a pawn but blocks off the Black Queen from defending h5. It also opens up an attack on h7.

17...d6xe5; 18.Ng3xh5 Nf6xh5; 19.Rh1xh5 f7-f5; 20. 0-0-0 e5xd4; 21.Rh5-g5+ Nf8-g6;
22.Bd3-c4+ e7-e6; 23.Rg5xg6+ h7xg6; 24.Qh6xg6+ Kg8-f8; 25.Qg6-f6+ Resigns.

There is no defence to Rd1-h1-h8 mate.

Saturday 10 September 1988 Round 7

The last round and all tournaments played in the morning. The hall is packed again. The pressure is off me as I am guaranteed second place win draw or loss as am still equal first (with J.A.Spiegel) by a clear point. However, he has White against Turner, me Black against the steady but drawish N.W.Dennis of Maidenhead. Realise that I must keep my game going as long as possible, perhaps playing for an endgame.

Spent a most enjoyable evening last night controlling the Quickplay. Both Keith and Susan Arkell entered - well, if you are Professional players you must take every opportunity, even if it is for a few pounds. I would imagine that the Arkells are finding it hard going making a living out of the game. Had a lot of fun with the pairings! Paired Susan Arkell against the retired Rev. Denis Tongue in round 4 with Susan floating up. Made Denis' week even though he lost. Paired Susan and Keith Arkell in the last round as we were all looking forward to see them play each other. However, the game wasn't very good and Keith won very easily to win the first prize of £10. It made one wonder whether the result was planned...

Premier

Alas, poor Dave Collier drew the short straw: Black against Arkell. You may have thought Arkell, with 6 out of 6 and $1\frac{1}{2}$ points clear, would have taken a quick draw. Not a bit of it, he played for a win from the start, achieving his goal after 58 moves. This left him on 7 points, a remarkable achievement.

There were still some surprises left in store in this last round. Firstly, there were no quick draws on the higher boards, though there were three or four at the bottom. Secondly, Lane failed to beat Lamb, Mordue lost to Griffiths and there were many draws allowing Moore to sneak up on the outside to snatch second equal. In fact, the Armstrong - Moore game was one of the last to finish thus leaving the result of the minor places in doubt right up to the end. However, despite taking such a long time to win, Moore set up his win early in his game with a neat combination:

A.Armstrong v G.Moore

1.e2-e4 c7-c5; 2.Ng1-f3 e7-e6; 3.d2-d4 c5xd4; 4.Nf3xd4 Ng8-f6; 5.Nb1-c3 d7-d6; 6.g2-g4 Bf8-e7; 7.Bc1-e3 Nb8-c6; 8.g4-g5 Nf6-d7; 9.f2-f4 0-0; 10.Qd1-f3 Nc6xd4; 11.Be3xd4 e7-e5; 12.Bd4-e3 e5xd4; 13.Qf3xf4 Nd7-e5; 14. 0-0-0 Bc8-e6; 15.Nc3-d5 Ra8-c8; 16.Rh1-g1 f7-f5; 17.Bf1-h3 Rc8-c4;

The trap is set, will White fall into it after this innocent looking move? The answer is most definitely YES.

18.Rd1-d4 Be6xd5; 19.e4xd5 Ne5-d3+!;

Utilising two pins and a fork.

20.Rd4xd3 Rc4xf4; 21.Be3xf4...

White gives up his queen for a rook and a bishop. Despite his bishop pair, White gets very little scope and it is all one way traffic from now on. Black finally grinds out his win after 61 moves with a further neat combination to finish the game.

Griffiths and Moore with their wins finished second equal on 5 points whilst no fewer than eight players finished fourth equal thus obtaining a small share in the prize money. The octave included: Lamb and Lane who drew, Shutler and Hempson who drew, Collier who lost to Arkell, Susan Arkell who beat McSheehy, Mordue who lost to Griffiths and John Wheeler who beat Scott. Shutler remained unbeaten throughout the tournament though he won only 2 games, drawing the rest.

So Keith Arkell carried off the first prize of £300 and how he deserved it! It was a terrific week's work, demolishing all seven opponents. Griffiths and Moore shared £225 between them whilst the octave shared £95, thus recovering their entry fees.

The Premier was however marred by the withdraw of R.C.Elliston after the sixth round. This withdraw was extremely surprising especially as he had 4 points and indeed was challenging for second place. It further meant that the natural draw which the Controller, Steve Boniface, had nurtured throughout the tournament, could not take place but instead another less satisfactory draw. Furthermore, he was not advised by the player concerned until after he had arranged the draw. Thus he had to start all over again.

The Challengers was won by A.C.Southall of Smethwick with 6 out of 7, with H.Lamb junior, Bolton, and D.M.Cooper of Olton, Birmingham equal second on $5\frac{1}{2}$ points. Equal fourth on 5 points were the early leader A.W.Brusey of local Teignmouth, T.O'Mahoney, Norton Radstock and another local player, C.Peters of Paignton. I hope to print some of the games from this section in the next edition.

The Swiss ended in a five-way tie for first place with D.J.Chamberlain of Tendring, Essex; M.P.Foss of Woking; S.Hall-Roberts of Taunton; E.W.Knapp of West London and W.Sapiecha of Teignmouth all finishing on $5\frac{1}{2}$ points.

The American 'A' was won by myself when Speigel lost to Turner and I gave up my attempt to win my last game by giving N.W.Dennis a draw although a win was not necessarily on the cards. I finished on 5 points with Spiegel finishing second on $4\frac{1}{2}$. The 'B' Section was won by H.G.Van Houten of Holland on $4\frac{1}{2}$ from 6 with L.J.R.Guard second on 4; Section 'C' by G.M.A.Smith from Southend on $6\frac{1}{2}$ points from 7 with Mrs M Clark of Warley second on 6 points; Section 'D' by D.C.Eden on $4\frac{1}{2}$ from 6 with R.S.Thynne, Teignmouth, and W.A.Shutler of BDH/Poole equal second on 4, both long established players from the West Country; and Section 'E' by L.C.Smith of Highbury on 5 points with D.J.Meadows of Courtaulds/Spondon second on $4\frac{1}{2}$.

Epilogue

A most thoroughly entertaining Congress despite my problems with my health. The venue is superb for playing Chess, the Oldway Mansion is beautiful, Paignton quite quaint, the weather was fantastic although the afternoon sessions were rather a hot steamy affair. The Congress was very well run and the Congress Committee extremely helpful and friendly. My congratulations to them. It was especially nice for me to come away winning my American Section, remaining unbeaten and the £40 prize money went a long way to paying for my Boardings.

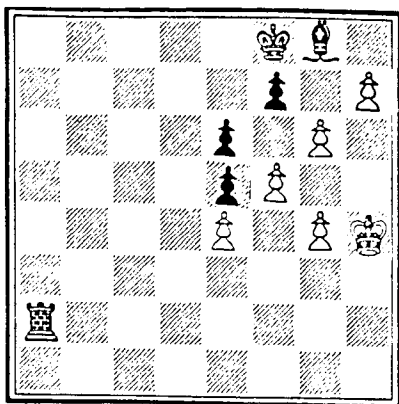
I for one will be back next year to play again. I think that this is the best compliment I can give to the Congress Committee.

Richard Rendell

PROBLEM AND COMPETITION PAGE

This edition's problems are all on a theme: White to play and draw through stalemate. However, it is not always White who gets Stalemated, so take care! I hope you appreciate the beauty of the Competition Puzzle which is definitely the hardest but is the prettiest.

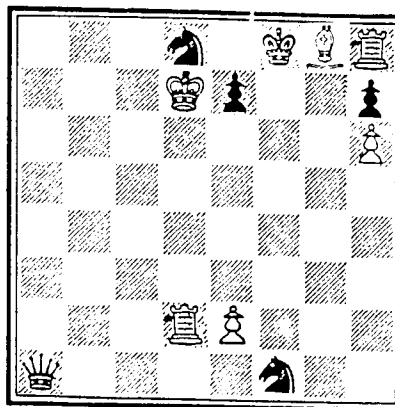
(a)



White to play and draw.

Clue: it takes 5 moves

(b)

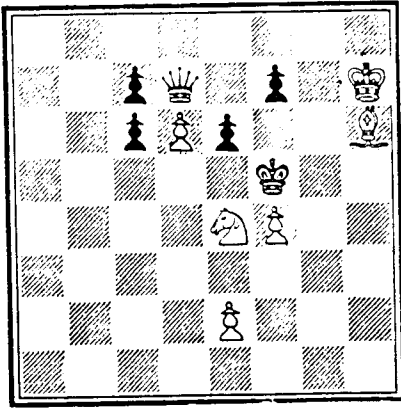


White to play and draw.

Clue: another 5 mover with mate threats

Both problems, by the way, are by a Russian, G.Bogdassarjanz, (a) compiled in 1937, (b) the year before.

(c)

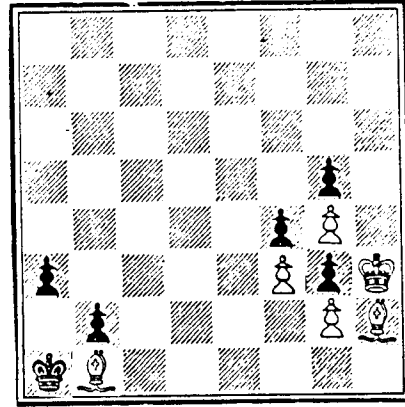


White to play and draw.

Clue: A 6 mover with mating threats.
Look for a waiting move on move 1.

(I hope I haven't made it too easy now!)

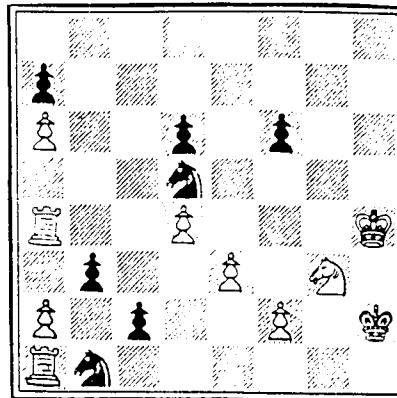
(d)



White to play and draw.

Clue: A 4 mover with exact play from White, despite him having a bishop pair and long diagonals to play with.

This Edition's Competition



White to play and draw.

Prize of £5 for first correct solution out of the bag. Closing Date: 1 April 1989

Solution to above puzzles on Pages 27 and 28.

The West of England Chess Union Jamboree

The WECU annual Jamboree took place this year on 17 September 1988 at The Preston Centre, Yeovil, a different place from the recently usual Somerset County Cricket Ground Pavilion, Taunton, due to the Pavilion being unable this year. There was a reduction in teams competing this year due to Cornwall not sending a team - a great pity. The Graded Jamboree was a team less than usual as well as Dorset only raised one team whilst there was no Cornwall team. However, Somerset put in two teams to make up.

The Inter-County Jamboree was a very close run affair but Hampshire eventually won by a clear $1\frac{1}{2}$ points from Dorset and Wiltshire. There was a big surprise in that Gloucestershire finished last - when was the last time Glos finished last in a competition of any sort? - and none of their players secured a whole point. Wiltshire fielded their strongest side for some time, with 5 players over 190. However, they lost $2\frac{1}{2}$ points from 3 to Hampshire and this eventually proved their downfall.

| | 1 | 2 | 3 | 4 | 5 | 6 | 7 | 8 | 9 | 10 | 11 | 12 | TOTAL |
|-----------------|---------------|---|---------------|---|---|---------------|---------------|---|---|---------------|---------------|---------------|----------------|
| Devon | $\frac{1}{2}$ | 1 | $\frac{1}{2}$ | 0 | 0 | $\frac{1}{2}$ | $\frac{1}{2}$ | 1 | 0 | $\frac{1}{2}$ | $\frac{1}{2}$ | $\frac{1}{2}$ | $5\frac{1}{2}$ |
| Dorset | 1 | 0 | $\frac{1}{2}$ | 0 | 1 | $\frac{1}{2}$ | 1 | 1 | 1 | 0 | $\frac{1}{2}$ | $\frac{1}{2}$ | 7 |
| Gloucestershire | $\frac{1}{2}$ | 0 | $\frac{1}{2}$ | 0 | 0 | 0 | $\frac{1}{2}$ | 0 | 0 | 0 | $\frac{1}{2}$ | 0 | 2 |
| Hampshire | 1 | 0 | $\frac{1}{2}$ | 1 | 1 | 1 | $\frac{1}{2}$ | 0 | 1 | 1 | 1 | $\frac{1}{2}$ | $8\frac{1}{2}$ |
| Somerset | 0 | 1 | $\frac{1}{2}$ | 1 | 0 | $\frac{1}{2}$ | 0 | 1 | 0 | $\frac{1}{2}$ | $\frac{1}{2}$ | 1 | 6 |
| Wiltshire | 0 | 1 | $\frac{1}{2}$ | 1 | 1 | $\frac{1}{2}$ | $\frac{1}{2}$ | 0 | 1 | 1 | 0 | $\frac{1}{2}$ | 7 |

Alas the Inter-County event was marred by the lighting in the hall, which cast grave doubts on the Preston Centre, Yeovil being used again for the Jamboree. The problem was that the lighting system is on a noise basis - if there is little noise in the room the lights go off! Poor old Jim Fewkes, the Controller, had to make loud noises each time the lights went off, which made him extremely unpopular. It is therefore felt that although several of the southern counties prefer Yeovil - it is nearer for them - The Preston Centre is not viable. I understand that Cornwall decided not to take part because it was too far. The WECU is therefore attempting to find a suitable venue in Taunton for next year as the County Ground is again unavailable.

The Graded Jamboree didn't suffer the same lighting problems - it was run in a separate room. In this competition, Somerset Bishops ran away with the Trophy with 10 points, with Dorset second on $6\frac{1}{2}$ and Wiltshire a close third on 6. As mentioned above, Somerset, at short notice, raised a third team which, despite finishing last, contained a lot of juniors and the competition proved good experience for them with some good individual results.

| | 1 | 2 | 3 | 4 | 5 | 6 | 7 | 8 | 9 | 10 | 11 | 12 | TOTAL |
|------------------|---------------|---------------|---------------|---------------|---|---|---|---|---|----|---------------|----|----------------|
| Dorset | 0 | $\frac{1}{2}$ | $\frac{1}{2}$ | 1 | 1 | 1 | 0 | 1 | 0 | 0 | $\frac{1}{2}$ | 1 | $6\frac{1}{2}$ |
| Exeter | $\frac{1}{2}$ | $\frac{1}{2}$ | $\frac{1}{2}$ | $\frac{1}{2}$ | 0 | 1 | 1 | 0 | 1 | 0 | $\frac{1}{2}$ | 0 | $5\frac{1}{2}$ |
| Somerset Bishops | 1 | 1 | 0 | $\frac{1}{2}$ | 1 | 1 | 1 | 1 | 1 | 1 | $\frac{1}{2}$ | 1 | 10 |
| Somerset Knights | 0 | 0 | $\frac{1}{2}$ | $\frac{1}{2}$ | 0 | 0 | 0 | 0 | 0 | 1 | 1 | 0 | 3 |
| Torbay | $\frac{1}{2}$ | 0 | $\frac{1}{2}$ | $\frac{1}{2}$ | 0 | 0 | 0 | 1 | 1 | 0 | $\frac{1}{2}$ | 1 | 5 |
| Wiltshire | 1 | 1 | 1 | 0 | 1 | 0 | 1 | 0 | 0 | 1 | 0 | 0 | 6 |

So Hampshire won the Inter-County Jamboree and the Bristol Cup and Somerset the Graded Jamboree and the Newman Trophy and these were presented to the winning Match Captains at the end of the competition.

| Board | Name of Player | Result | Name of Player |
|-------|-----------------|----------|------------------|
| 1 | MEVABLE J F S | 183 1/2 | BEAKE R |
| 2 | SAYLE P | 171 0 | WHEELER G W |
| 3 | GRINE R J | 172 1/2 | WHEELER J F |
| 4 | GEARIE I M | 169 1/2 | DOWN N |
| 5 | WILLIAMS P J | 167 1/2 | HEWSON B W R |
| 6 | HORN E A | 164 1/2 | HUTCHINGS J M |
| 7 | KIRKMAN N J | 145 0 | ASTON P |
| 8 | LEAVER S | 139 0 | GILBERT J |
| 9 | MEAKES A D | 143 1/2 | LINGHAM R H |
| 10 | TYLOR C | 143 1/2 | JONES J F |
| 11 | WACKER O | J130 0 | HILLS K |
| 12 | CABLE H | 137 1 | PICKERING A |
| 13 | WATSON J | U 0 | BRUSEY A W |
| 14 | JOLLY M | 119 0 | RIDOLFO J |
| 15 | HAMPTON J | 131 1/2 | HUTCHINGS R |
| 16 | MARGETTS S | J118 1 | BRUCE R M |
| 17 | WOOLF J | J116 0 | BOOMSMA B H |
| 18 | JUPP L | J112 0 | ANSON J (MISS) |
| 19 | BRAY C | J113 0 | LUFFMAN R C |
| 20 | SELLWOOD C | U 0 | HEATH P |
| 21 | PILLING I K | 118 0 | BLOODWORTH K J |
| 22 | WILKINSON K | 124 1 | BRUCE R M (MRS) |
| 23 | BARTLETT S | 99 0 | CROSS R V |
| 24 | HOLLINGSWORTH J | U 0 | JONES R H |
| 25 | CHAPELL A J | U 0 | GORODI J |
| 26 | CLARK R | J 96 0 | LEWIS R M |
| 27 | OTTER J | 102 0 | SMITH J T |
| 28 | HARPER G | 92 0 | GUARD L J |
| 29 | WOLEY N | J 82 0 | HARPER D |
| 30 | COLE R | J100 0 | CRICKMORE E A |
| 31 | FEARN C | J 86 0 | LE GALLEZ P (Dr) |
| 32 | THOMPSON J | J 78 0 | HURD R E |
| | | 1st Team | 6 10 |
| | | 2nd Team | 1 15 |

| Board | Name of Player | Result | Name of Player |
|-------|-----------------|----------|----------------|
| 1 | WHITCUTT J K | 178 0 | SHUTLER S J |
| 2 | LITTLEJOHNS D P | 184 0 | DONNETT A J |
| 3 | JARRETT D C | 184 1 | ROBINSON S C E |
| 4 | WEEKS C J | 178 1 | WADDINGTON M P |
| 5 | HELBIG P D | 173 1/2 | BURTON R |
| 6 | MILLER G I | 165 1 | BENWICKS G A |
| 7 | PUGH D C | 170 1/2 | VALENTINE R |
| 8 | KLINEK J A | J163 1/2 | SIMMS F E |
| 9 | FEAKES J E | 168 1/2 | COLMER P C |
| 10 | BONIFACE S R | 154 0 | NEDDIAN H D |
| 11 | GREGORY R W | 162 1/2 | PAPWORTH D E |
| 12 | JONES D A | 157 1/2 | TICNEY-BASSETT |
| 13 | JEPPI G N | 151 1 | WALKER B |
| 14 | EASTWOOD M | J150 1 | HUNT A |
| 15 | BROWN M | J U 1 | HILLERS A |
| 16 | TOWERS B K | 140 1/2 | ADAMS M W |
| 17 | THOMAS H G | 155 1 | HARDIE D J W |
| 18 | WINCH C E | 161 0 | FRITCHARD A D |
| 19 | WOODRUFF D G | 153 1 | PRINETT A D |
| 20 | BROWN G | U 1/2 | BRACKNER P |
| 21 | WOOD D C | 148 1/2 | CANNINGS D J |
| 22 | FREEMAN D | U 0 | BROADHOUSE B J |
| 23 | HIBBITT A | 139 1 | FOSTER P |
| 24 | COLE E W | 135 0 | SALES M J |
| 25 | MCKINLEY C T J | 134 1 | LEVY B |
| 26 | HENDY J | 140 1 | VICTOR D |
| 27 | MAISHMAN R | 126 1 | OLDFIELD J A |
| 28 | HIRONS R J | 122 1 | BASSETT J A |
| 29 | BAGSHAW R J | 120 1 | RAPKINS D G E |
| 30 | RUDD J | J109 1 | WOODHOUSE W J |
| 31 | STANFORD C | U 1 | KELLY W J |
| 32 | RUDD M | U 0 | BYNOE J S G |
| | | 1st Team | 9 6 1/2 |
| | | 2nd Team | 11 5 |

| Board | Name of Player | Result | Name of Player |
|-------|-------------------|----------|--------------------|
| 1 | CORFIELD I | 200 1/2 | TRURAN M C |
| 2 | FENNEL G H | 197 0 | HEADLONG T |
| 3 | NEWBURY M L | 184 0 | COOPER A C |
| 4 | HOLLAND E | J175 0 | HAYDON R |
| 5 | FRASER-MITCHELL J | 183 1/2 | ZEIDLER S |
| 6 | JONES J H | 183 1 | GARWELL J (Miss) |
| 7 | HOPKINS J R | 172 1/2 | STRANGE M A |
| 8 | STENHOUSE I A | 172 1 | WARD D E |
| 9 | COILING T I | 173 0 | PECK R J |
| 10 | KNOX S W | 170 1/2 | PONTING A D |
| 11 | BECKLEY M G S | 167 1 | BANKS I |
| 12 | DEAN S | 161 0 | RENDELL R W |
| 13 | BERION M B | J157 1/2 | CHAMPION A W |
| 14 | MILLER P | 158 1 | BETHELL D R |
| 15 | BYARD K | 158 1 | BYTHEWAY M |
| 16 | MULLEOD F | 155 1 | COBB J |
| 17 | SYMINGTON P C | 155 1 | WOODWARD T |
| 18 | CROSSIN A D | 151 1 | MILWARD J E |
| 19 | WEBB D J | 153 1 | CROASDALE M |
| 20 | WALFERS L C | 151 1/2 | MILLENER R |
| 21 | KENT S J | 151 1 | WARDELL R F |
| 22 | BAGAN M C | 149 1 | HEIDRICH C |
| 23 | BENNETT D | 146 1/2 | CARVER R |
| 24 | BAKER M P | 145 1 | HARTFORD E A (Mrs) |
| 25 | BLAKE C A | J138 1/2 | POTT D H |
| 26 | SMITH A D | 142 1 | ASHBY N G |
| 27 | MARSHALL P L | 141 1 | CONNER S |
| 28 | HIGHSON D F | 138 1 | HUGHES D |
| 29 | HERBELLWALIE P J | 135 1 | BAHIA H S |
| 30 | CLIFFORD D | 131 1 | DUNCAN A |
| 31 | LE FEARE S D | 124 1 | COBB C |
| 32 | PRINCE R M | 104 1/2 | SYMONS J |
| | | 1st Team | 8 7 1/2 |
| | | 2nd Team | 14 2 |

| Board | Name of Player | Result | Name of Player |
|-------|------------------|----------|-------------------|
| 1 | BENADGE J F S | 183 0 | FORDUE A T |
| 2 | GRIME R J | 172 1/2 | NEWMAN E T |
| 3 | WILLIAMS P J | 167 0 | DILLEIGH S P |
| 4 | NICHOLAS J J | 151 1/2 | JONES C J A |
| 5 | MOSS B | 148 0 | BOYCE J R |
| 6 | LEAVER S | 139 1/2 | MEADE P J |
| 7 | BURLEIGH D | 147 0 | FURBER T |
| 8 | MEAKES A D | 143 1/2 | POWIS R D |
| 9 | PARKIN B | 139 0 | DIXON R I |
| 10 | WACKER O | J130 1/2 | DENTON P |
| 11 | CABLE H | 137 1 | HARGREAVES (MISS) |
| 12 | WATSON J | U 1/2 | GETTING A |
| 13 | JOLLY M | 119 0 | BENTLEY A R |
| 14 | HAMPTON J | 131 1 | POWNEY C R |
| 15 | GARRETT B H | J119 0 | KNIGHT J |
| 16 | MARGETTS S | J118 0 | SELFE R M A |
| 17 | WOOLF J | J116 0 | GINGELL M |
| 18 | JUPP L | J112 1 | MARKEY K |
| 19 | BRAY C | J113 1 | RAMSDALE J |
| 20 | SELLWOOD C | U 0 | OLIVER C |
| 21 | WILKINSON K | 124 1/2 | RICHARDS N |
| 22 | PILLING I K | 118 1/2 | BEVERIDGE C F W |
| 23 | BARTLETT S | 99 0 | LESNIOWSKI P |
| 24 | CLARK R | J 96 0 | MARLOW J |
| 25 | GARRETT T (Miss) | J 94 0 | PARKER H |
| 26 | GARRETT D H | 101 0 | WILDEN R E |
| 27 | CHAPELL A J | U 1 | HILDE L |
| 28 | OTTER J | 102 0 | DE PIRO T |
| 29 | FEARN C | J 86 1/2 | RICHARDS A |
| 30 | COLE R | J100 0 | FLETCHER B |
| 31 | HOSKEN R | 91 0 | BACON I |
| 32 | JUPP A | J 80 1 | BACON M |
| | | 1st Team | 5 11 |
| | | 2nd Team | 5 10 1/2 |

| Board | Name of Player | Result | Name of Player |
|----------|-----------------------|---------|---------------------|
| 1 | CORFIELD J 200 | 1 0 | WHITCUTT J K 178 |
| 2 | GODBER E J183 | 0 1 | LITTLEJOHNS D P 184 |
| 3 | POULTON J R J182 | 1 0 | JARRETT D C 184 |
| 4 | NEWBURY M L 184 | 0 1 | WEEKS C J 178 |
| 5 | JONES J H 183 | 1/2 1/2 | HELBIG P D 173 |
| 6 | FRASER-MITCHELL J 183 | 1 0 | MILLER G I 165 |
| 7 | HOPKINS J R 172 | 0 1 | PUGH D C 170 |
| 8 | BUCKLEY M G 167 | 1 0 | KLIMEK J A J163 |
| 9 | MONK J J154 | 1 0 | FEWKES J E 168 |
| 10 | DEAN S 161 | 1 0 | BORKOWSKI J A 165 |
| 11 | MILLER P 158 | 1 0 | GREGORY R W 162 |
| 12 | BYARD K 158 | 1 0 | JONES D A 157 |
| 13 | MCLEOD F 155 | 1 0 | WINCH C E 161 |
| 14 | WEBB D J 153 | 0 1 | JEPPS G N 151 |
| 15 | KENT S J 151 | 0 1 | EASTWOOD M J150 |
| 16 | WALTERS L C 151 | 0 1 | BROWN M J U |
| 17 | HAGAN M C 149 | 1/2 1/2 | THOMAS H G 155 |
| 18 | SWEENEY B P 149 | 1/2 1/2 | BROWN G U |
| 19 | CONNOR M 148 | 0 1 | WOODRUFF D G 153 |
| 20 | BENNETT D 146 | 0 1 | TOWERS B K 140 |
| 21 | BAKER M R 145 | 0 1 | FARMER R H 154 |
| 22 | MARSHALL P L 141 | 1/2 1/2 | WOOD D C 148 |
| 23 | WELLS A J132 | 1 0 | SENIOR N N 149 |
| 24 | THOMPSON D F 138 | 0 1 | FREEMAN D U |
| 25 | HEBBLETHWAITE P J 135 | 1/2 1/2 | WALLIS T A 134 |
| 26 | CULLIFORD D 131 | 1/2 1/2 | MCKINLAY C T J 134 |
| 27 | SUNNERS A C 125 | 0 1 | HENDY J 140 |
| 28 | LAXTON C W 120 | 0 1 | MAISHMAN R 126 |
| 29 | PENN J 116 | 1/2 1/2 | HIRONS R J 122 |
| 30 | PRINCE R M 104 | 0 1 | WOOD P J115 |
| 31 | GLY F J 81 | 1/2 1/2 | YEATES D 87 |
| 32 | DEFAULT - | 0 1 | EASTWOOD J 84 |
| 1st Team | | 9 1/2 | 6 1/2 |
| 2nd Team | | 4 1/2 | 11 1/2 |

| Board | Name of Player | Result | Name of Player |
|----------|------------------------|---------|--------------------|
| 1 | HEADLONG T 193 | 1/2 1/2 | SHUTLER S J 190 |
| 2 | COOPER A C 193 | 1/2 1/2 | SIMONS M J 192 |
| 3 | HAYDON R 196 | 1/2 1/2 | DONNETT A J 193 |
| 4 | GARWELL J (Miss) 176 | 1/2 1/2 | ROBINSON S C E 183 |
| 5 | BOURNE J D 173 | 1/2 1/2 | CLARK I C 175 |
| 6 | LEA E G U | 0 1 | JOHNS C W 181 |
| 7 | STRANGE M A 163 | 0 1 | BURTON K 176 |
| 8 | PONTING A D J147 | 0 1 | ALDRIDGE D J J162 |
| 9 | WARD D E 162 | 0 1 | PLEASANTS A J 169 |
| 10 | COHEN F M F 150 | 1 0 | ROTH M J 167 |
| 11 | RENDELL R W 154 | 1/2 1/2 | ANDERSON J 166 |
| 12 | CHAMPION A W 136 | 0 1 | CATCHPOLE J F 162 |
| 13 | GILL P 136 | 0 1 | VALENTINE R 162 |
| 14 | WINTER K U | 0 1 | SIMMS T E 158 |
| 15 | HURST A D 134 | 0 1 | NEEDHAM H D 152 |
| 16 | COBB J J126 | 0 1 | PAPWORTH D E 148 |
| 17 | WOODWARD T 129 | 1 0 | TILNEY-BASSETT 147 |
| 18 | MILWARD J E 129 | 0 1 | BEVIS D K 147 |
| 19 | BYTHEWAY M 132 | 0 1 | WALKER B 145 |
| 20 | HEIDRICH C J123 | 0 1 | MILLERS A 145 |
| 21 | POTT D H 131 | 0 1 | ADAMS M W 143 |
| 22 | HUGHES D J125 | 1/2 1/2 | DEARLOVE P C 143 |
| 23 | WARDELL R F 130 | 0 1 | BROADHOUSE B J U |
| 24 | HARTFORD E A (Mrs) 112 | 0 1 | EDGINGTON P 138 |
| 25 | ASHBY N G J115 | 1/2 1/2 | PRINETT A D 138 |
| 26 | FLANAGAN T M 114 | 1 0 | BRACKNER P 137 |
| 27 | BAHIA H S 114 | 1 0 | CANNINGS D J 136 |
| 28 | WALTERS M 119 | 1 0 | FOSTER P 131 |
| 29 | DUNCAN A J108 | 0 1 | SALES M J 129 |
| 30 | ASHBY G S 97 | 1/2 1/2 | OUNSTED J 128 |
| 31 | SYMONS J J103 | 1/2 1/2 | RAPKINS D G E 126 |
| 32 | MILWARD B J 94 | 0 1 | HUNWICKS C A 124 |
| 1st Team | | 4 | 12 |
| 2nd Team | | 6 | 10 |

DORSET v CORNWALL

| Board | Name of Player | Result | Name of Player |
|----------|------------------------|---------|-----------------------|
| 1 | SHUTLER S J 190 | 1 0 | WALLACE P U |
| 2 | SIMONS M J 192 | 0 1 | MENADUE J F S 183 |
| 3 | ROBINSON S C E 183 | 1 0 | GRIME R J 172 |
| 4 | JOHNS C W 181 | 1 0 | WILLIAMS P J 167 |
| 5 | WADDINGTON M P 177 | 0 1 | PIPER S J 165 |
| 6 | BURTON R 176 | 0 1 | NICHOLAS J J 151 |
| 7 | PLEASANTS A J 169 | 1 0 | BURLEIGH D 147 |
| 8 | ROTH M J 167 | 1 0 | NEAKES A D 143 |
| 9 | ANDERSON J 166 | 0 1 | ADDICOTT S J134 |
| 10 | KINGDON F C 159 | 1 0 | WACKER O J130 |
| 11 | NEEDHAM H D 152 | 1 0 | PARKIN B 139 |
| 12 | PAPWORTH D E 148 | 1/2 1/2 | CABLE H 137 |
| 13 | BEVIS D K 147 | 1 0 | HAMPTON J 131 |
| 14 | TILNEY-BASSETT J F 147 | 1/2 1/2 | GARRETT B H J119 |
| 15 | WALKER B 145 | 0 1 | MARGETTS S J128 |
| 16 | MILLERS A 145 | 1 0 | PILLING A 127 |
| 17 | DAVIES J M U | 1 0 | JUPP L J112 |
| 18 | BROADHOUSE B J U | 1 0 | BRAY C J J113 |
| 19 | PRITCHARD A D U | 1/2 1/2 | WOOLF J J116 |
| 20 | HURDLE T J 143 | 1/2 1/2 | SELLWOOD C 135 |
| 21 | CRANE S A 142 | 1 0 | PILLING I K 118 |
| 22 | EDGINGTON P 138 | 1 0 | HOCKING D 115 |
| 23 | PRINETT A D 138 | 0 1 | BARTLETT S 99 |
| 24 | BRACKNER P 137 | 1/2 1/2 | CLARK R J 96 |
| 25 | FOSTER P 131 | 1/2 1/2 | GARRETT T (Miss) J 94 |
| 26 | SALES M J 129 | 1 0 | GARRETT M J 92 |
| 27 | RAPKINS D G E 126 | 1/2 1/2 | CHAPEL A J U |
| 28 | HUNWICKS C A 124 | 1 0 | FEARN C 186 |
| 29 | BULLOCK A C 123 | 1/2 1/2 | COLLE R 1100 |
| 30 | KELLY W J 123 | 1 0 | JUPP A J 80 |
| 31 | AMBROSE C J F 115 | 1/2 1/2 | THOMPSON J J 78 |
| 32 | STOUT A G 110 | 1/2 1/2 | GREET A J 79 |
| 1st Team | | 10 | 6 |
| 2nd Team | | 11 | 5 |

SOMERSET v DEVON

| Board | Name of Player | Result | Name of Player |
|----------|------------------------|---------|---------------------|
| 1 | WHITCUTT J K 178 | 0 1 | BEAKE B 201 |
| 2 | LITTLEJOHNS D P 184 | 1/2 1/2 | HEATH C 190 |
| 3 | WEEKS C J 178 | 0 1 | WHEELER J F 189 |
| 4 | HELBIG P D 173 | 1/2 1/2 | DOWN N A 184 |
| 5 | HILL A L 180 | 0 1 | HEWSON B W R 179 |
| 6 | MILLER G I 165 | 1/2 1/2 | GILBERT J 175 |
| 7 | KLIMEK J A J163 | 1/2 1/2 | LINGHAM R H 172 |
| 8 | FEWKES J E 168 | 0 1 | HILLS K 171 |
| 9 | BONIFACE S R 154 | 0 1 | THYNNE T F 160 |
| 10 | JONES D A 157 | 1 0 | BRUSEY A W 158 |
| 11 | HOLMES D J 152 | 1 0 | RIDOLFO J 162 |
| 12 | GREGORY R W 162 | 0 1 | PICKERING A J172 |
| 13 | JEPPS G N 151 | 1/2 1/2 | HUTCHINGS R J159 |
| 14 | WINCH C E 161 | 1/2 1/2 | ANSON J (Miss) 149 |
| 15 | EASTWOOD M J150 | 1/2 1/2 | LUFFMAN R C 149 |
| 16 | BROWN M J U | 1/2 1/2 | BRUCE R M 151 |
| 17 | BROWN G U | 1/2 1/2 | PENALICON B 141 |
| 18 | WOODRUFF D G 153 | 1 0 | PARKER J 147 |
| 19 | WOOD D C 148 | 0 1 | BROOKS P U |
| 20 | TOWERS B K 140 | 1/2 1/2 | SHAPLAND R 141 |
| 21 | EASTWOOD J (Miss) J134 | 1/2 1/2 | HEATH P 138 |
| 22 | HIBBITT A 139 | 1/2 1/2 | BLOODWORTH K J 144 |
| 23 | FARMER R H 154 | 1/2 1/2 | COLLINS C 145 |
| 24 | FREEMAN D U | 1/2 1/2 | CROSS R V 139 |
| 25 | MCKINLAY C 134 | 0 1 | JONES R H 139 |
| 26 | HENDY J 140 | 1 0 | BRUCE R M (Mrs) 142 |
| 27 | WALLIS T A 134 | 0 1 | SMITH I T 138 |
| 28 | MAISHMAN R 126 | 1/2 1/2 | SPARKE C 124 |
| 29 | HIRONS R J 122 | 1/2 1/2 | CHAMBERS J F 120 |
| 30 | RUDD J J109 | 1/2 1/2 | DEAKIN C 111 |
| 31 | ROBERTS K 122 | 1/2 1/2 | HAY T J 116 |
| 32 | YEATES D 87 | 0 1 | LE GALLEZ P 115 |
| 1st Team | | 6 | 10 |
| 2nd Team | | 7 | 9 |

| Board | Name of Player | Result | Name of Player |
|-------|------------------------|----------|------------------------|
| 1 | TRURAN M C 204 | 1 0 | MORDUE A T 205 |
| 2 | HEADLONG T 193 | 1 1 | ASHBY A P 195 |
| 3 | HAYDON R 196 | 0 1 | GILMORE A 187 |
| 4 | LEA E G U | 1 1 | NEWMAN E T J184 |
| 5 | BOURNE J D 173 | 1 1 | BOYCE J R 176 |
| 6 | STRANGE M A 163 | 0 1 | EASTON A 174 |
| 7 | WARD D E 162 | 1 1 | HOSKEN N 173 |
| 8 | COHEN F M F 150 | 0 1 | MEADE P J 172 |
| 9 | PONTING A D J147 | 1 0 | POWIS R O 166 |
| 10 | PECK R J 153 | 0 1 | SMITH R 157 |
| 11 | RENDELL R W 154 | 1 1 | CARNOT D 155 |
| 12 | CHAMPION A W 136 | 0 1 | HARWAR J A (Miss) J155 |
| 13 | WOODWARD T 129 | 0 1 | CARR J J 162 |
| 14 | GILL P 136 | 1 0 | BENTLEY A R 148 |
| 15 | HEIDRICH C J123 | 0 1 | POWNEY C R 144 |
| 16 | BAHIA H S 114 | 0 1 | GINGELL M 140 |
| 17 | MILWARD J E 129 | 1 0 | MARKEY K 136 |
| 18 | BYTHEWAY M 132 | 0 1 | RAMSDALE J 136 |
| 19 | POTT D H 131 | 1 1 | OLIVER C 135 |
| 20 | WARDELL R F 130 | 0 1 | PRIDEAUX E J 134 |
| 21 | MILLENER R 123 | 1 1 | BEVERIDGE C T W 132 |
| 22 | CROASDALE M 121 | 0 1 | PARKER H 126 |
| 23 | CARVER R 120 | 0 1 | DATE J C B 126 |
| 24 | COBB J J126 | 1 1 | MARKE T N 126 |
| 25 | ASHBY N G J115 | 0 1 | WILDE L 125 |
| 26 | CONNER S 123 | 0 1 | DE PIRO T J121 |
| 27 | FLANAGAN T M 114 | 1 1 | RICHARDS A 120 |
| 28 | WALTERS M 119 | 1 0 | FLETCHER B 116 |
| 29 | HARTFORD E A (Mrs) 112 | 1 0 | SHEPPARD P J113 |
| 30 | BOSWORTH A J 95 | 0 1 | BACON I J111 |
| 31 | ASHBY G S 97 | 1 0 | DEFAULT - |
| 32 | SYMONS J J103 | 1 0 | WHITE S J 78 |
| | | 1st Team | 5 10 1/2 |
| | | 2nd Team | 7 9 |

| Board | Name of Player | Result | Name of Player |
|-------|---------------------|----------|----------------------|
| 1 | HEATH C 190 | 1 1 | HEADLONG T 193 |
| 2 | WHEELER G W 186 | 1 0 | DEFAULT - |
| 3 | WHEELER J F 189 | 1 0 | HAYDON R 196 |
| 4 | DOWN N A 184 | 0 1 | LEA E G U |
| 5 | HEWSON B W R 179 | 1 1 | STRANGE M A 163 |
| 6 | ASTON P A 176 | 1 1 | PONTING A D J147 |
| 7 | HARRIS P U | 1 0 | RENDELL R W 154 |
| 8 | LINGHAM R H 172 | 0 1 | WARD D E 162 |
| 9 | HILLS K 171 | 1 0 | COHEN F M F 150 |
| 10 | JONES J H U | 1 0 | PECK R J 153 |
| 11 | SWIFT A K 146 | 1 0 | WINTER K U |
| 12 | BRUSEY A W 158 | 0 1 | CHAMPION A W 136 |
| 13 | PICKERING A J172 | 1 0 | WOODWARD T 129 |
| 14 | RIDOLFO J 162 | 1 0 | HURST A D 134 |
| 15 | HUTCHINGS R J159 | 0 1 | BYTHEWAY M 132 |
| 16 | ANSON J (Miss) 149 | 1 1 | HEIDRICH C J123 |
| 17 | LUFFMAN R C 149 | 1 0 | WARDELL R F 130 |
| 18 | BRUCE R M 151 | 1 1 | POTT D H 131 |
| 19 | PENALIGON B J 141 | 1 0 | COBB J J126 |
| 20 | PARKER J 147 | 1 1 | WALTERS M 119 |
| 21 | SHAPLAND R 141 | 1 0 | HARTFORD E A Mrs 112 |
| 22 | HEATH P 138 | 0 1 | ASHBY N G J115 |
| 23 | BLOODWORTH K J 144 | 1 0 | BAHIA H S 114 |
| 24 | JONES R H 139 | 1 0 | DUNCAN A J108 |
| 25 | GORODI J 143 | 1 0 | ASHBY G S 97 |
| 26 | SMITH J T 138 | 0 1 | COBB C J108 |
| 27 | BRUCE R M (Mrs) 142 | 1 0 | SYMONS J J103 |
| 28 | SPARKE E G 124 | 0 1 | BOSWORTH A J 95 |
| 29 | HAY T J 116 | 1 0 | MILWARD B J 94 |
| 30 | | 1 0 | DEFAULT - |
| 31 | | 1 0 | DEFAULT - |
| 32 | | 1 0 | DEFAULT - |
| | | 1st Team | 10 6 |
| | | 2nd Team | 12 4 |

GLOUCESTERSHIRE v SOMERSET

CORNWALL v HAMPSHIRE

| Board | Name of Player | Result | Name of Player |
|-------|------------------------|----------|--------------------|
| 1 | MORDUE A T 205 | 1 1 | LITTLEJOHN D P 184 |
| 2 | ASHBY A P 195 | 1 1 | JARRETT D C 184 |
| 3 | COPELAND G 190 | 1 0 | DEFAULT - |
| 4 | GILMOUR A 187 | 1 1 | WEEKS C J 178 |
| 5 | DILLEIGH S P 179 | 1 1 | HELBIG P D 173 |
| 6 | BOYCE J R 176 | 1 0 | HILL A L 180 |
| 7 | EASTON A 174 | 0 1 | BORKOWSKI J A 165 |
| 8 | MEADE P J 172 | 1 0 | BONIFACE S R 154 |
| 9 | DAY P F 171 | 1 1 | JONES D A 157 |
| 10 | WHITE I R 168 | 1 0 | FEWKES J E 168 |
| 11 | FURBER I 168 | 0 1 | WINCH C E 161 |
| 12 | DILKE S W 167 | 1 0 | JEPPS G N 151 |
| 13 | POWIS R O 166 | A A | BROWN M J U |
| 14 | DIXON R J 165 | 1 1 | BROWN G U |
| 15 | STIPLING A 164 | A A | WOOD D C 148 |
| 16 | CARNOT D 155 | 0 1 | TOWERS B K 140 |
| 17 | HARWAR J A (Miss) J155 | 1 0 | DEFAULT - |
| 18 | BENTLEY A R 148 | 0 1 | HIBBITT A 139 |
| 19 | POWNEY C R 144 | 1 0 | NORDEN P U |
| 20 | KNIGHT J 141 | 0 1 | MCKINLAY C T J 134 |
| 21 | DEFAULT - | 0 1 | SENIOR N N 149 |
| 22 | MARRY V U | 1 1 | BAGSHAW P 135 |
| 23 | RAMSDALE J 136 | 1 0 | WALLIS T A 134 |
| 24 | PRIDEAUX E J 134 | 1 1 | BOWEN D J 122 |
| 25 | RICHARDS N J J134 | 0 1 | MAISHMAN R 126 |
| 26 | LESNIEWSKI P 129 | 1 1 | HIRONS R J 122 |
| 27 | FLEICHER B 116 | 1 0 | BAGSHAW R J 120 |
| 28 | WILDE L 125 | 1 0 | DEFAULT - |
| 29 | DEFAULT - | - - | DEFAULT - |
| 30 | BACON I J111 | 1 0 | DEFAULT - |
| 31 | LESNIEWSKI D J 92 | 1 0 | DEFAULT - |
| 32 | WHITE S J 78 | 1 0 | DEFAULT - |
| | | 1st Team | 8 6 + 2 adj |
| | | 2nd Team | 9 5 |

| Board | Name of Player | Result | Name of Player |
|-------|-----------------------|----------|---------------------|
| 1 | GEORGE I M 169 | 0 1 | YEO M J 183 |
| 2 | PIPER S J 165 | 0 1 | CORFIELD J 200 |
| 3 | KIRKMAN N 145 | 0 1 | BRAMELD A F 189 |
| 4 | MOSS B 148 | 0 1 | POULTON J R J182 |
| 5 | ADDCOIT S J134 | 1 0 | JONES J H 183 |
| 6 | WACKER O J130 | 1 0 | FRASER-MITCHELL 183 |
| 7 | HAMPTON J 131 | 1 0 | NEWBURY M L 184 |
| 8 | GARRETT B H J119 | A A | BUCKLEY M G 167 |
| 9 | MARGETTS S J118 | 0 1 | DEAN S 161 |
| 10 | JOLLY M 119 | 0 1 | MONK J J154 |
| 11 | WOOLF J J116 | 1 1 | MILLER P 158 |
| 12 | JUPP L J112 | 0 1 | WEBB D J 153 |
| 13 | BRAY C J113 | 1 0 | WALLERS L C 151 |
| 14 | SELLWOOD C U | 0 1 | KENT S J 151 |
| 15 | WILKINSON M 124 | 0 1 | HAGAN M C 149 |
| 16 | BOWMAN L J U | 0 1 | SWEENEY B P 149 |
| 17 | PILLING I M 118 | 0 1 | BAKER M R 145 |
| 18 | HOCKING D 115 | 0 1 | SMITH A D 142 |
| 19 | BARTLETT S 99 | 1 1 | MARSHALL P L 141 |
| 20 | CLARK R J 96 | 1 0 | THOMPSON D F 138 |
| 21 | GARRETT T (Miss) J 92 | 0 1 | HEMBLEWHITE P 135 |
| 22 | GARRETT H J 92 | 1 1 | CULLIFORD D 131 |
| 23 | CHAPPELL A J J U | 0 1 | SUMMERS A C 125 |
| 24 | PATTERSON N 102 | 1 1 | LE FEVRE S D 124 |
| 25 | GOTTER J 102 | 1 1 | PENN J 116 |
| 26 | FEARN C J 84 | 0 1 | PRINCE R M 104 |
| 27 | COLE R J100 | 1 0 | GUY F J 81 |
| 28 | | 1 0 | DEFAULT - |
| 29 | | 1 0 | DEFAULT - |
| 30 | | 1 0 | DEFAULT - |
| 31 | | 1 0 | DEFAULT - |
| 32 | | 1 0 | DEFAULT - |
| | | 1st Team | 4 10 1/2 + 1 adj |
| | | 2nd Team | 9 7 |

This edition's game is one which was played in the British Championships at Tunbridge Wells, Kent, in 1908:

Rev. W.C.Palmer v H.W.Shoosmith

1.d2-d4 d7-d5; 2.c2-c4 e7-e6; 3.Nb1-c3 Ng8-f6; 4.Bc1-g5 Nb8-d7; 5.e2-e3 Bf8-e7; 6.Ng1-f3 O-O; 7.Qd1-c2 Rf8-e8; 8.Ra1-d1 c7-c6;

This move is a little bit passive and it allows White to carry on with his development. Better was 8...c7-c5; as this puts pressure on White's centre and gives Black a little more freedom.

9.Bf1-d3 Nd7-f8; 10. O-O Nf6-h5;

Not a very good move. 10...d5xc4; 11.Bd3xc4 Nf6-d5; is much better. The text move forces the swap of the Black-squared bishop.

11.Bg5xe7 Qd8xe7; 12.Rf1-e1...

White is now ready to make advances in the centre.

12...b7-b6;

12...f7-f5; must really be played here to stop 13.e3-e4... The text move is rather non-committal.

13.e3-e4 d5xc4; 14.Bd3xc4 Bc8-b7; 15.e4-e5 Nh5-f4; 16.Qc2-d2 Nf4-g6;

The knight is not happy here as it is open for attack. It would again have been better to put it on d5.

17.Qd2-e3 Re8-d8; 18.Nc3-e4 Rd8-d7; 19.Ne4-d6...

Suddenly a great big gap has appeared in Black's defence. The knight on this square is very strong and cannot be removed quickly, without of course giving up the exchange.

19...Ra8-d8; 20.Nf3-g5 Ng6-h8;

An extremely strange square for the knight. White is definitely better here and Black should perhaps have given up the exchange to rid himself of the knight in his midrift.

21.f2-f4 Bb7-a8; 22.f4-f5 h7-h6;

This move is a little late and all it does is to chase the knight onto a better square:

23.Ng5-e4...

The attack is now tremendous. 24.f5-f6... must now be stopped otherwise the Queen is lost. However, swopping the pawns off brings more woe:

23...e6xf5; 24.Nd6xf5 Qe7-b4;

The only safe square for the Black Queen. However, she is now far removed from the defence to be any use.

25.Qe3xh6!...

A beautiful Queen sacrifice. If 25...g7xh6; 26.Ne4-f6 is mate. Meanwhile mate is threatened on g7.

Note the position of the four knights!

25...Nf8-e6;

The only move. However, the attack is over-powering and mate soon follows:

26.Nf5xg7 Qb4xc4; 27.Ne4-f6+ Resigns.

If 27...Kg8-f8; 28.Qh6xh8+ Kf8-e7; 29.Ng7-f5 is mate.

A very neat finish.

LETTERS FROM READERS

I have received several letters from readers which raise some interesting points and have printed them in the hope that they will generate further correspondence - which I have had little of so far.

The first letter is from Paul Massey of Eastleigh, Hampshire in response to Steve Boniface's Legal Clinic in the July 1988 edition. I must advise you that this article was written in response to a letter from Paul Massey and another from another reader querying various rules and actions taken in a major British Congress.

"Dear Richard,

Just thought I'd drop you a line to say how much I'm enjoying your magazine.

I was particularly interested in the 'Legal Clinic' as I noticed my questions regarding controllers, scoresheets etc were used. The point I made about controllers applying 'subjective notions of fair play' (rather than enforcing the rules) was, I think, quoted verbatim.

I must admit I find myself a little offended by Steve's cynical answer. A rule is a rule and I will stick by it and be judged for its breach in EXACTLY the same way as I would expect anybody else to be judged. He says "everyone argues that way until they are in breach of the rules" - perhaps he means - "In my experience everyone argues ...etc". In my view it is not relevant that the breach is deliberate or malicious.

If I may be permitted to draw an analogy. It is an offence at law to fail to display a tax disc. FULL STOP! It is not relevant that it fell off the window just before the policeman arrived - that merely goes to (possibly)mitigate.

The particular instance about which I was complaining involved my opponent failing to score the game, even though he was not in any kind of time trouble. Surely everybody knows that a score of the game must be kept. Even if not, ignorance is no excuse.

Steve goes onto say that it is in nobody's interest to take a heavy-handed inflexible approach. My approach is not heavy-handed. Let us have a clear approach. That way everybody knows where they stand. F.I.D.E. makes the rules and controllers should enforce them. If there is a deficiency in the rules it is up to the legislature to change the rules to obviate the inequitable results which may arise.

I wonder if you would be kind enough to print this letter and see if it evokes any interest from your readers.

Yours Sincerely

Paul Massey."

I think if anyone is unsure of the article in question, I would suggest they read it again on pages 6 to 8 of the July 1988 edition. If you are a new reader and do not have this edition I have some left...

This letter raises a lot of interesting points and I do not intend to dissect it. However, I would just say that chess is supposed to be a friendly game and should be played for enjoyment, certainly my level of chess! I think I would seriously consider giving up the game if I got to the stage of playing every game strictly to the rules without giving my opponent the benefit of the doubt. I find intriguing that Steve Boniface is an amateur Controller (no disrespect Steve, I mean that you do not Control for money) and therefore does it for his own personal enjoyment - like those playing - whilst Paul Massey is a Solicitor by profession and dare I say it, seems to think like one (This is supposed to be a compliment Paul!).

I therefore leave it to you, the reader, for your comments....

The next letter is from Malcolm Horne of Exmouth, Devon (who I managed to swindle at Paignton) :

"Dear Richard,

Hoping that you're not adverse to some statistics, I'm enclosing some figures compiled from the East Devon Chess Congress at Exeter earlier this year, which I've just compiled.

You're welcome to use any of this in a future 'Westward Ho!'

East Devon Chess Congress 1988 (Statistics based on all 484 games: Open 130/
Major 153/Minor 201.)

(1) White's First Move (N.B. Percentages may not add up exactly to 100)

| | <u>e4</u> | <u>d4</u> | <u>Nf3</u> | <u>c4</u> | <u>others</u> |
|---------|-----------|-----------|------------|-----------|---------------|
| Open | 57 | 28 | 7 | 5 | 3 |
| Major | 54 | 22 | 9 | 9 | 7 |
| Minor | 53 | 33 | 8 | 2 | 3 |
| Overall | 54 | 28 | 8 | 5 | 4 % |

(2) Replies to 1.e2-e4

| | <u>c5</u> | <u>e5</u> | <u>e6</u> | <u>c6</u> | <u>d5</u> | <u>d6</u> | <u>others</u> |
|---------|-----------|-----------|-----------|-----------|-----------|-----------|---------------|
| Open | 46 | 18 | 18 | 5 | 3 | 1 | 9 |
| Major | 29 | 24 | 11 | 9 | 12 | 7 | 7 |
| Minor | 30 | 43 | 9 | 8 | 2 | 7 | 0 |
| Overall | 34 | 30 | 12 | 8 | 5 | 5 | 5 % |

After 1. e2-e4 c7-c5; only 32% of the games went into the main line Sicilian (3.d2-d4) - amongst the wide variety of other Sicilian lines, the Morra Gambit and c2-c3 systems were popular.

After 1.e2-e4 e7-e5; the Ruy Lopez was the most popular line followed by the Philidor (2.Ng1-f3 d7-d6), although the latter was confined almost entirely to the Minor.

(3) Replies to 1.d2-d4

| | <u>Nf6</u> | <u>d5</u> | <u>e6</u> | <u>f5</u> | <u>others</u> |
|---------|------------|-----------|-----------|-----------|---------------|
| Open | 53 | 33 | 3 | 6 | 6 |
| Major | 52 | 18 | 6 | 9 | 15 |
| Minor | 42 | 46 | 6 | 0 | 6 |
| Overall | 47 | 36 | 5 | 4 | 8 % |

After 1.d2-d4 Ng8-f6; 2.c2-c4 followed in 73% of the games whilst 2.c2-c4... followed in 78% of the games after 1.d2-d4 d7-d5; .

(4) Success Rate

The above figures probably give a rough idea about opening preferences. The number of games (484) is, however, too small to draw many or any conclusions about the success rates of specific openings.

Nevertheless...it was interesting that the French Defence (1.e2-e4 e7-e6;) proved to be Black's most successful reply to 1.e2-e4 in all three sections, and by some way too (the French scored 64%, with the Sicilian next best with 51%).

The other statistic to stand out was that less orthodox first moves by either White or Black generally led to poor results.

White won 53% of the points with 1.e2-e4; 52% with 1.d2-d4; 37% with Ng1-f3; 52% with 1.c2-c4; but only 31% with other first moves. Black fared about equally well with several different replies to 1.d2-d4, but against 1.e2-e4 the success rates were more varied: Sicilian 51%, King's Pawn 43%, French 64%, Caro Kann 40%, Centre Counter 29%, Pirc 46%, others only 27%.

Overall White won 51% of the points compared to Black's 49% (W/B: Open 55/45, Major 53/47 and Minor 47/53).

(5) Draws

| | |
|---------|-------------|
| Open | 28 % |
| Major | 33 % |
| Minor | <u>20 %</u> |
| Overall | 26 % |

1.e2-e4 games produced 23% draws, 1.d2-d4, 26% and 1.other 36% - this pattern was particularly evident in the Open and the Major, but in the Minor the choice of first move made little difference to the draw rate.

(6) Notation (algebraic/descriptive)

78% of players in the Open used algebraic notation; the figure in both the Major and the Minor was 57%. Overall 63% used some form of algebraic.

Hope this can be of some use to you,

With good wishes,

Malcolm Horne.

There are some interesting calculations here. I would imagine this took some time and effort to compile.

Please keep your letters coming - more will be printed in the next edition.

Richard Rendell

SOLUTIONS TO PROBLEMS

For problems see Pages 18 and 19.

(a) 1.h7-h8=Q Ra2-h2+; 2.Ka4-b5 Rh2xh8; 3.g6-g7+ Kf8xg7; 4.f5-f6+...

Black's moves 1, 2 and 3 have been forced, otherwise he loses. However, he has an option here: 4...Kg7-f8; leaves White in stalemate. Therefore he plays

4...Kg7-h7;

However, 5.Kg5-h5... leaves Black stalemated!

(b) Who is going to be stalemated in this one? It seems at first glance as though White might try to sacrifice his pieces, but that he can force Black into a stalemate position in five moves is almost incredible.

Note here that both White rooks are attacked.

1.Rd2-d1 Qalxh8;

Not, of course, 1...Qalxd1+; 2.Bg8-d5 mate!

2.Rd1xf1+ Kf8xg8;

Forced. 2...Nd8-f7; 3.Bg8xf7 Q moves; 4.B moves ... leaves White in a winning position - the Queen must be given up to stop the mate.

3.Kd7-e8! ...

Threatening 4.Rf1-f8 mate.

3...Nd8-e6; 4.Rf1-g1+ Ne6-g7 (forced unless the Queen is given up);

5.Ke8xe7! ...

Black is stalemated!

(c) White must attack to obtain a stalemate in this position. Thus:

1.Ne4-f6... attacking the Queen.

If 1...Qd7xd6; then 2.e2-e4+ Kf5xf6 Bh5-g6 is mate.

Thus:

1...Kf5xf6; 2.e2-e4,...

Still threatening mate.

2...e6-e5!; 3.Bh6-g7+ Kf6-e6; 4.f4-f5+ Ke6xd6; 5.Bg7-f8+ Qd7-e7;

White could ruin everything now by taking the Queen - this would leave him two pawns down and with still a lost game. Hence:

6.f5-f6...

Threatening to win the Queen and queen the pawn. Hence:

6...Qe7xf8; Stalemate!

(d) Remember the clue: A bishop pair and long diagonals. This is a delightful and picturesque finish. I find that the way the Bishops sweep the long diagonals an interesting feature. It is indeed important on which square the bishops move to:

1.Bh2-g1...

If Black replies 1...Kaxbl; then 2.Bg1-d4 Kbl-c2; 3.Bd4xb2 a3xb2; is stalemate.

1...a3-a2; 2.Bbl-h7...

This square is most important as you will see...

2...b2-b1=Q; 3.Bg1-d4+ Qb1-b2 (forced); 4.Bd4-h8!...

Again most important that the bishop be moved to this square as Black has two options: He must move the Queen of course but to where? If she stops anywhere along the diagonal, BxQ is mate! Hence the other option:

4...Qb2xh8; results in stalemate!

I trust you find these four puzzles intriguing. I trust also that they put you in the right frame of mind to solve the competition - its solution is along the same lines.

LATEST COUNTY CHAMPIONSHIPS TABLE

FIRST TEAM (HAROLD MEEK COMPETITION)

| | <u>P</u> | <u>Pts</u> |
|-----------------|----------|------------|
| GLOUCESTERSHIRE | 3 | 6 |
| DEVON | 3 | 6 |
| HAMPSHIRE | 3 | 6 |
| DORSET | 3 | 4 |
| SOMERSET | 4 | 2 |
| CORNWALL | 4 | 0 |
| WILTSHIRE | 4 | 0 |

SECOND TEAM (WAYLING CUP COMPETITION)

| | <u>P</u> | <u>Pts</u> |
|-----------------|----------|------------|
| DEVON | 3 | 6 |
| GLOUCESTERSHIRE | 3 | 6 |
| DORSET | 3 | 4 |
| SOMERSET | 4 | 4 |
| CORNWALL | 4 | 2 |
| HAMPSHIRE | 3 | 2 |
| WILTSHIRE | 4 | 0 |