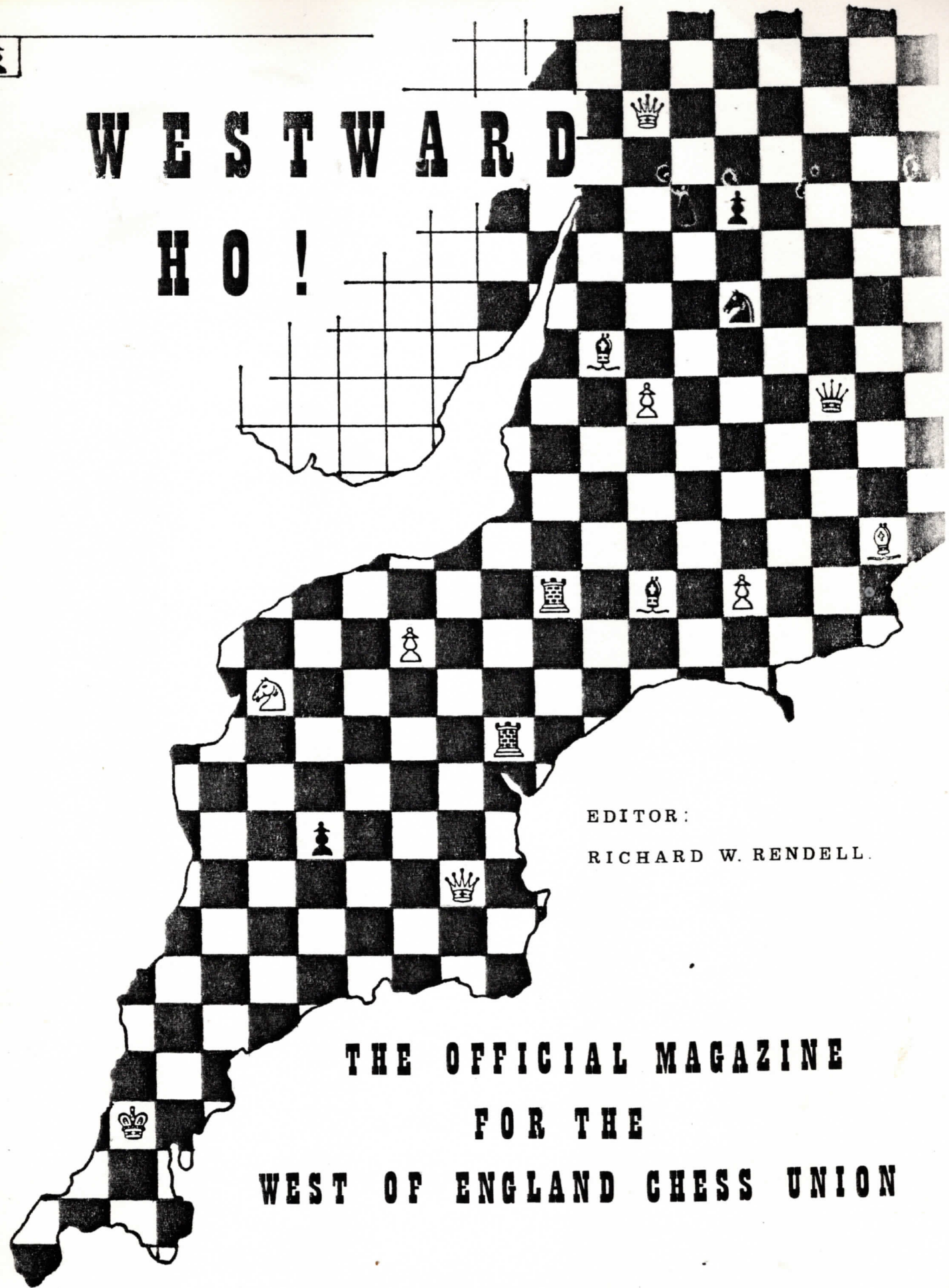


**WESTWARD
HO!**



EDITOR:
RICHARD W. RENDELL.

**THE OFFICIAL MAGAZINE
FOR THE
WEST OF ENGLAND CHESS UNION**

APRIL 1988



My apologies for the late production of this Edition. However, there are many reasons for this. Firstly, the late receipt of the WECU September 1987 Grading List and hence, the late printing of it on behalf of the WECU, which took most of my spare time in March and early April. Hopefully now all those who have paid for a copy have received their's and the WECU's obligation to their subscribers to the Old Series Westward Ho! has now been fulfilled. If not, please contact me and I will send you a copy of the list. Secondly, the lack of response to the January edition. It has been very hard to write this edition as I have had very little material to work with. So much so that I have filled in space by a new feature, "Pot Pourri" which is made up of games people have sent me with no article in mind together with some more games from David Le Moir's excellent report from the 1986 and 1987 WECU Congresses. Another major reason for the delay in publication is that the chess season ends at this time of the year and because I have fingers in many pies, I am involved in many meetings and Annual General Meetings for which I have to work hard to prepare reports, accounts, etc. This greatly eats into my spare time which is extremely limited at present as I am working six full days a week.

My congratulations to Gloucestershire for winning the County Championship and Devon for winning the Second Team Championships. Both competitions were very tight and a full report of match results can be found on pages 18 to 25. Congratulations also to Hampshire Under 18's for winning the National Finals at Birmingham and to Michael Adams for his win over the World Champion, Gary Kasparov in a Simultaneous Display. Likewise to the winners of the several competitions in the WECU Congress at Weston-Super-Mare over the Easter weekend. David Le Moir is currently writing his report on this and this will be the main feature of the July Edition in which all prize winners will be mentioned.

This quarter I enclose an additional looseleaf response sheet. I must say I have been very disappointed in the response received to the January Edition and for this reason enclose this extra sheet. Please use it to put down your views and thoughts etc and send it back to me. It makes me wonder why I bother when I receive such poor response, so please make an extra effort to respond. It will take you only a few minutes to do and will help me greatly in writing future editions. Please also have a go at the Problem Competition - see Page 13 - which isn't all that difficult. Surprisingly I didn't receive a single correct entry to last quarter's competition which either means that people aren't interested in these sort of competitions or that they found it too difficult. I did however receive one reply which asked whether there was indeed a solution as the closing date was the first of April!

Finally my thanks to those who have submitted material which has aided me in writing this edition and I trust that you, the reader, enjoy reading it.

Richard Rendell
Editor

September 1988 WECU Grading List

After last year's fiasco in the late printing of the Grading List you will be pleased to hear that the BCF has taken steps to ensure the September 1988 Grading List comes out on time. They have promised that it will be published on the 1st of September and the following steps have already been taken to ensure this:

- (1) A new computer and printer have been purchased, with the aid of a generous donation.
- (2) New programs have been written and are now being tested. These have been written by a professional programmer using a tried software package.
- (3) A new and better-qualified Grading Administrator has been appointed.

The existing data is currently being transferred to the new computer and instructions prepared for graders feeding data into the new system. The timetable

of dates by which items of data have to be entered will be **rigidly** applied and Organisers of chess events have been warned that to ensure **inclusion**, results are passed to graders before 31 May 1988.

Apart from satisfying the need for a reliable means of producing **grading lists** when they are needed, the revised system includes a number of **new facilities** to provide a better service to chess players. It will be possible to produce a grading list for a particular county or league or club. It will also be possible to print statements for individual players showing the data held in respect of them, including the makeup of the data on which their grades are calculated.

The 1988 BCF Grading List will be larger than hitherto. If a player has less than 30 games recorded in the last two years, the results from the year before that will also be taken into account. The condition for having a published grade will be reduced to a minimum of 15 games in 3 years (including 5 in the most recent). The combined effect of these measures will be to include on the list far more players than before and enable new players to acquire a grade more quickly.

We therefore wait in eager anticipation to find out whether this will indeed happen.

THE STREET OPEN CONGRESS
incorporating THE SOMERSET CHAMPIONSHIPS 1988

To be held at the Victoria Club, Leigh Road, Street from 20 to 22 May 1988.

Open - All Players Major - players graded under 140

Minor - players graded under 100

Entry Fee Open and Major £3 (Juniors £2) Minor £2 (Juniors £1)

Tournament Organiser: Brian Francis 15 Chancellor Road, Walton, Street,
Telephone: Street (0458) 42068.

Refreshments will be on sale.

Prize Money: A minimum of 75% of entry fees . Trophies for the highest placed Somerset player in each section.

INDEX

<u>Page</u>	<u>Details</u>
1	Editorial
1 to 2	September 1988 WECU Grading List
2	Street Open Congress Advertisement
2	Index
3	WECU Officers
4 to 12	Pot Pourri
13	Problem and Competition Page
14 to 16	Congress Round-Up
16	Dates for your Diaries
17	The "More Unusual Chess Openings" Column
18 to 25	County Championship 1987/8 Match Results
25	Sports Aid Day Advertisement
26 to 27	Gems of the Chess Board
27 to 28	Answers to Problems and Competition
28	News from CORNWALL
28	WECU Junior Championships Advertisement

WEST OF ENGLAND CHESS UNION

OFFICERS

PRESIDENT Peter L MARSHALL 57 Janson Road, Southampton, SO1 5GL
Tel: Southampton (0703) 774464

DEPUTY PRESIDENT Ken J BLOODWORTH 550 Budshead Road, Whitleigh, Plymouth
Tel: Plymouth (0752) 779823

HONORARY LIFE PRESIDENTS K.J. BLOODWORTH MRS J.M. PARKER

VICE PRESIDENTS J. ANDERSON A.C. BROWN MRS R.M. BRUCE A.W. BUSBY P.H. CLARKE
A. HOLLIS D.C. JARRETT F.C. KINGDON E.G. WALKER L.T. WALKER

GENERAL SECRETARY - no one at present. All Correspondence to Peter MARSHALL
(address as above)

TREASURER AND REGISTRATION OFFICER Richard W RENDELL 7 Wellesley Close,
Bowerhill, Melksham, Wiltshire, SN12 6XT
Tel: Melksham (0225) 709619

GRADING AND RECORDS OFFICER R (Bob) C LUFFMAN 93 Kirkwall Road, Crownhill,
Plymouth. Tel: Plymouth (0752) 783861

CONGRESS SECRETARY Ron O POWIS Gordano, Farmhill Lane, Stroud, Glos.
Tel: Stroud (045 36) 2518

JUNIOR SECRETARY - no one at present, but Brian J FRANCIS is acting for time
being. All Correspondence to him at 15 Chancellor Road,
Walton, Street, Somerset, BA16 9RX.

FIXTURE SECRETARY Robert H NORTHAGE 9 Attewell Court, Devonshire Buildings,
Bath, Avon BA2 4ST
Tel: Bath (0225) 333155

AUDITOR Ian R PICKUP 21 St Neot's Road, Sandy, Bedfordshire.
Tel: Sandy (0767) 81742

WECU COUNCIL REPRESENTATIVES

Cornwall Roger J GRIME and Ian M GEORGE

Devon S M OWEN and George W WHEELER

Dorset Frank C KINGDON and Adrian D ROOKES

Gloucestershire C R POWNEY and J C B DATE

Hampshire Len C WALTERS and Harry RANSON

Somerset Gary N JEPPI

Wiltshire Harbinder BAHIA and Richard W RENDELL

Bristol League E I S (Ian) BIDDICK and A T (Tyson) MORDUE

B.C.F. Management Board and Council Representatives Ken J BLOODWORTH and
Len C WALTERS

WESTWARD HO! EDITOR: Richard W RENDELL

Please send any correspondence to me at: 7 Wellesley Close, Bowerhill,
Melksham, Wiltshire SN12 6XT.

This is another new feature. I hope to make this one an **Annual** one, each April as it gives me the chance to print odd games that **people** have sent me with no article in mind. It also gives me the chance to **print** some of the games from David Le Moir's report which, due to lack of **room** weren't print in the July of the previous year's Edition. As you will see from below some of these **games** are well analysed but unfortunately bore no relation to the overall result of the Congresses and therefore weren't printed in the reports.

I start, however, with the **game** which won the Best Game Prize from the 1987 County Correspondence Chess Championship - as promised in the last edition:

Division 1 : Ward Higgs Trophy.

Prize shared between both players. Annotations by both players.

R.SMITH (Kent) v S.BROWN (Middlesex)

1.c2-c4 e7-e6; 2.Ng1-f3 d7-d5; 3.g2-g3 Ng8-f6; 4.Bf1-g2 Bf8-e7; 5. 0-0 0-0;
6.b2-b3 c7-c5; 7.Bc1-b2 Nb8-c6; 8.e2-e3 b7-b6; 9.Qd1-e2 Bc8-a6; 10.Nb1-c3...

It is very noticeable in these Postal Games that both players strive to get out of the usual book lines extremely quickly. Each player, however, will attempt to continue along lines they know in the hope that their opponent doesn't! (RR)

Not 10...d2-d3 b7-b5; 11.c4xd5 e6xd5; 12.e3-e4 Rf8-e8!; (RS)

10...Ra8-c8;

After an opening in which both sides appear to have confused several systems Black has equalised (SB)

11.d2-d3 Rf8-e8;

Centralising both Rooks is unusual and the lack of Queenside activity invites White to attack on the Kingside. (RS)

12.Nf3-e1?!... ?! given by SB
d5-d4; 13.Nc3-b5 e6-e5; 14.e3-e4 Qd8-d7!;

This move stops Bg2-h3 and threatens to win a pawn. (RS)

15.f2-f4 Be7-f8;

Keeping the option of a pawn win and pressuring White's centre. 15...Nf6-g4; fails to 16.Bg2-h3 h7-h5; 17.Ne1-g2... with f4-f5 to follow (RS)

16.f4-f5...

A long-term pawn sacrifice; White needs time to reorganise his pieces for a Kingside assault and Black will counter with his Queenside pawn roller (RS)
A pawn sac to get quick Kingside play. (SB)

16...Ba6xb5; Accepting the challenge (RS)

17.c4xb5 Nc6-a5; 18.g3-g4 Qd7xb5; 19.g4-g5 Nf6-d7; 20.f5-f6?!...

A plan of aggression based around g6 would be more dangerous since White's pieces are actively placed. The move gives Black time to organise a defence and with play on the Queenside. (SB)

Activates my KB. Now if Black blocks by g7-g6 the h-file attack may be hard to defend. (RS)

20...Qb5-c6; 21.Bb2-c1!...

Black cannot risk winning another pawn by 21...g7xf6; 22.g5xf6 Nd7xf6; and the Bishop is better placed to meet the Queenside attack. (RS)

21...b6-b5; 22.Bc1-d2 Na5-b7; 23.f6xg7!...

A difficult choice - now I can target both f and h pawns at the price of giving Black more defensive options. (RS)

Surely a mistake: this gives Black more room to **organise his** defence. Since

Black cannot play g7xf6 or g7-g6 White should not clarify the Kingside so quickly. 23.Bg2-h3 is preferred. (SB)

23...Bf8xg7; 24.Bg2-h3 Rc8-c7; 25.Ra1-c1 Nd7-f8; 26.Ne1-g2?...

The knight needs to cover d3. White cannot stop an eventual c5-c4 by Black (SB) Uniting the Rooks and if Black plays Nf8-g6 I can still continue with h2-h4(RS)

26...Qc6-a6!; Combining defence and attack (RS)

27.Rc1-c2 Nf8-g6; 28.Bh3-f5...

To meet 28...Ng6-e7; with Bf5xh7+ Kg8xh7; Qe2-h5+

28...c5-c4!?!; (SB)

29.h2-h4...

Any Queenside exchange must favour Black. To accept the pawn sac on c4 would give Black much play based on the strong d4 pawn (SB)

29...c4xd3;

Not 29...c4-c3; which blocks all Black's play (SB) Not 29...c4-c3; which blocks the pawn roller and with the pin on the Rook White simply continues with h4-h5 (RS)

30.Qe2xd3 Nb7-c5!; To reroute the N to f4 via e6 (SB) 31.Qd3-f3 Qa6-b6;

If 31...d4-d3; 32.Rc2xc5! Rc7xc5; 33.h4-h5 Ng6-e7; 34.Bf5xh7+ Kg8xh7;

35.Qf3xf7+ overwhelms (SB)

The best move (RS)

32.h4-h5 Ng6-f8; 33.Rg1-h1 Nc6-e6; With the idea of invading the c-file (RS)

34.Rc2xc7 Qb6xc7; 35.Ng2-e1...

Stopping the invasion. The extra pawn is stuck and White can get on with the Kingside attack. (RS)

The errant N returns after move 26 (SB)

35...Qc7-e7; 36.h5-h6 Bg7-h8;

The Black King is hemmed in and vulnerable to some sacrificial attacks. (RS) The position has simplified. Black a pawn up and White's attack seemingly inadequate. However Black must create some activity or exchange to such an extent that f7-f6 to release the bishop does not open the floodgates for White's pieces (SB)

37.Ne1-d3 Nf8-g6; 38.Qf3-g4 Ne6-f4!?!;

If White exchanges to win a pawn Black's bishop is freed and very active on e5. The knight's somewhat inflexible. (SB)

F7-f6 would still lose (RS)

39.Nd3-b4... Better than the obvious Bd2-b4 because of the possible "dream finishes" following either 39...Qe7-d6 or 39...f7-f6. However...

39...Qe7-b7; ...the dream ends, the pin on the e pawn tying my bishop (RS)

40.Rf1-c1?! ... Not a mistake but 40.Bd2xf4 Ng6xf4; 41.Rf1xf4... followed by Nb4-d5 should win easily (SB)

40...a7-a5;

Black decides to give up the pawn to activate his pieces. The next few moves are forced by both players (SB)

41.Nb4-c6 Nf4-d3; 42.Nc6xa5 Qb7-a6; 43.Rc1-f1 b5-b4; 44.Na5-c4...

44.Qg4-e2 was a real alternative.

44...Qa6xa2??;

A pity. After 44...Ng6-f4; Black should be better although the position is very unclear. This was the last move played. I anticipated two variations: 45.Nc4-d6 Qa2xd2; 46.Nd6xe8 Nd3-f2+; 47.Rf1xf2 Qd2xf2 where Black is better and 45.Bf5xg6 h7xg6; 46.Qg4-f3 Nd3-f4; 47.Bd2xf4 e5xf4; 48.Qf3xf4 Qa2-a7; which is unclear. However, White had a sac finish which I had overlooked... 45.Bf5xg6 h7xg6; 46.Qg4-d7 Re8-f8; 47.Rf1xf7 Rf8xf7; 48.Qd7-e8+...wins (SB)

Black at last has fallen into a trap - the pawn was poisoned and he loses by 45.Bf5xg6...etc (as above). The pawn on h6 was worth its weight in gold! (

Controller's Note:

The Judge thought this was the best overall game amongst the entries from Division 1. Although White was thought to have the superior game at his 44th move it was not clear that he was winning and the prize is shared between the winner and loser, the latter having played better (until falling into a last-move trap) than losers in competing entries.

The next game is one received from Graham Smith of Bodmin. It comes from the Cornwall Chess Championships on 2 January 1988. The first 30 moves are pretty unremarkable in which Black accumulates two pawns and has a clearly won game. However, you never know in Chess:

Trevor Johns v Graham Smith

1.c2-c4 Ng8-f6; 2.Nb1-c3 g7-g6; 3.d2-d3 Bf8-g7; 4.Ng1-f3 d7-d6; 5.g2-g3 O-O; 6.Bf1-g2 e7-e5; 7. O-O Nb8-c6; 8.Bc1-g5 Nc6-e7; 9.Qd1-c1 Bc8-e6; 10.Bg5xf6 Bg7xf6; 11.Nc3-e4 Bf6-g7; 12.Nf3-g5 Be6-d7; 13.f2-f4 f7-f5; 14.Ne4-c3 h7-h6; 15.Ng5-h3 Ne7-c6; 16.e2-e3 g6-g5; 17.f4xg5 h6xg5; 18.Qc1-e1 g5-g4; 19.Nh3-f2 Rf8-f6; 20.h2-h4 Rf6-h6; 21.Nc3-d5 Nc6-e7; 22.Nd5xe7+ Qd8xe7; 23.Bg2xb7 Ra8-b8; 24.Bb7-d5+ Kg8-h7; 25.Qe1-d2 Bg7-f6; 26.Nf2-h1 e5-e4; 27.c4-c5 Rb8xb2; 28.Qd2-c1 e4xd3; 29.Ra1-b1 d3-d2; 30.Qc1-d1 Qe7xe3+; 31.Rf1-f2...

As mentioned above everything is going for Black but how quickly can he finish his opponent off?

31...Bd7-a4!;

This settles it. White has no real option but to concede the long diagonal. Of course Black can win by 31...Rb2xb1; 32.Qd1xb1 Qe3-e1+; 33.Rf2-f1 Qe1xb1; 34.Rf1xb1 Bd7-a4; 35.Nh1-f2 Bf6-d4; etc but this isn't as quick or as pretty.

32.Bd5-b3 Ba4-c6!;

Preparing a rook sacrifice.

33.Rb1xb2 Qe3-e1+; 34.Rf2-f1...

Forced. If 34.Kg1-h2 then Rh6xh4+; 35.g3xh4 Bf6-e5+; 36.Rf2-f4 Be5xf4+; 37.Nh1-g3 Qe1-f2 mate.

34...Bf6-d4+; 35.Kg1-h2 Rh6xh4+!;

Bang goes the other rook.

36.g3xh4 Qe1xh4 mate.

The next game is another postal game sent to me by Malcolm Burn of Tuffley Glos which was played in 1986.

M.Burn v D.Barrington

1.d2-d4 d7-d5; 2.c2-c4 d5xc4; 3.Ng1-f3 Ng8-f6; 4.e2-e3 e7-e6; 5.Bf1xc4 c7-c5; 6. O-O a7-a6; 7.a2-a4 Nb8-c6; 8.Qd1-e2 Qd8-c7; 9.Nb1-c3 Bf8-d6; 10.Rf1-d1 O-O; 11.h2-h3 b7-b6; 12.d4-d5 e6xd5; 13.Nc3xd5...

13.Bc4xd5 Bc8-b7; 14.e3-e4 Ra8-e8; 15.Bc1-g5... is a promising alternative.

13...Nf6xd5; 14.Bc4xd5 Bc8-b7; 15.e3-e4 Ra8-e8; 16.Bc1-e3 h7-h6;

16...Bb7-c8; is probably better. However, the game is evenly poised. White has more space for manoeuvre and a strong pawn on e4 whilst Black has a 3 to 2 pawn advantage on the Queenside together with his pieces aiming at his opponent's King from long distance.

17.Qe2-d2 Re8-d8; 18.Be3xh6...

At last after some manoeuvring around White strikes. But does Black need to take it. Can he not play 18...Nc6-b4; ? allowing him good chances. Even if he does take it, it doesn't guarantee White a win. However, from Black's three previous moves it seem certain that he would capture the bishop and I can make it difficult for him.

18...g7xh6; 19.Qd2xh6 Bd6-f4; 20.Nf3-g5 Bf4xg5;

Black has now removed one of White's major attacking pieces but now White can bring the rook on a1 into play:

21.Qh6xg5+ Kg8-h7; 22.Qg5-h4+ Kh7-g8?;

The mistake I was awaiting. Black's only chance was 22...Kh7-g7; with the idea of meeting 23.Ra1-a3 with 23...Rd8-d6 and 24...Rd6-g6. Has White anything better than the perpetual check? I think not.

23.Ra1-a3 Rf8-e8; 24.Ra3-g3+ Kg8-f8; 25.Qh4-h6+ Kf8-e7; 26.Qh6-g5+ Ke7-d7; 27.Qg5-f5+ Kd7-d6; 28.Qf5-f6+ Kd6-d7; 29.Bd5-e6 mate.

I now go onto David Le Moir's report on the 1986 West of England Championship, the first game of which was played in the very first round. The notes and analysis is all his.

G.Burgess v S.Dilleigh

Dutch Defence

1.d2-d4 e7-e6; 2.Ng1-f3 f7-f5; 3.g2-g3 Ng8-f6; 4.Bf1-g2 Bf8-e7; 5. 0-0 0-0; 6.Nb1-d2...

This is unusual. White tries to force e2-e4 without first playing c2-c4. He soon succeeds, despite Black's efforts to prevent it.

6...a7-a5; 7.Rf1-e1 Nf6-e4; 8.Nf3-e5 d7-d6; 9.Ne5-d3 Ne4xd2; 10.Bc1xd2 Be7-f6;

This move has no effect (it would have been better if White's pawn was on c4 as the d-pawn is then harder to defend) and the bishop takes the best square from Black's knight.

11.c2-c3 d6-d5; 12.f2-f3 Nb8-c6; 13.e2-e4 g7-g6; 14.a2-a4 Kg8-h8; 15.Bd2-e3 Nc6-e7;

Black's formation had some point if he was trying to force e6-e5. Now he abandons the idea.

16.Qd1-d2 c7-c6; 17.Be3-g5...

In contrast to the quiet build-up so far, White now starts to play forcefully. 17...Bf6-g7; loses a pawn to 18.e4xd5 c6xd5; 19.Nd3-f4 Qd8-d6; 20.Bg5xe7 Qd6xe7; 21.Nf4xd5...

17...Ne7-g8; 18.h2-h4 Qd8-b6; 19.Bg5-f4 Bf6-g7; 20.h4-h5...

Note that White maintains the central tension. Black now loses patience and resolves the tension to White's advantage.

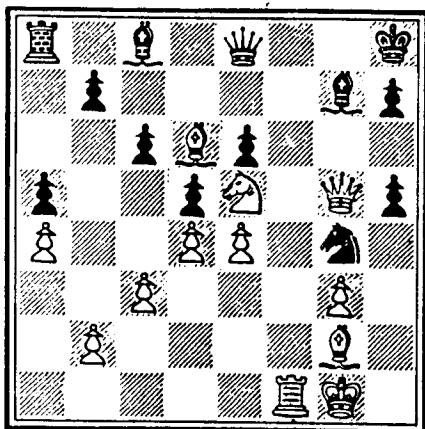
20...f5xe4; 21.f3xe4 g6xh5; 22.Bf4-d6! Rf8-f6;

Other reasonable moves of the rook allow 23.Nd3-e5 to threaten mate on f7.

23.Re1-f1 Qb6-d8; 24.Nd3-e5! Qd8-e8;

24...Qd8xd6?; 25.Rf1xf6... threatening Ne5-f7+.

25.Rf1xf6 Ng8xf6; 26.Ra1-f1 Nf6-g4; 27.Qd2-g5!...



This move is fairly obvious but it has two very nice points.

First, it threatens 28.Bd6-f8!! when 28...Bg7xf8; 29.Ne5-f7+... wins the queen.

Secondly, the removal of the threatening knight loses the queen as follows:

27...Ng4xe5; 28.Rf1-f8+!...

Same square, different catastrophe.

28...Bg7xf8; 29.Bd6xe5+...leads to mate. Now its soon over.

28...Qe8xf8; 29.Bd6xf8 Ne5-g6;
30.Bf8xg7+ Kh8xg7; 31.Qg5-d8 Kg7-f7;

32.Bg2-f3 h5-h4; 33.g3xh4 Ng6-e7; 34.Bf3-h5+ Ne7-g6; 35.e4-e5...resigns

At last he blocks the square he used so well with his pieces. The control over f6, however, wins more material for White.

The next game is from Round 4 of the 1986 Congress and is one of those games that makes the English Opening so attractive. George Wheeler seems to a master at these openings. He gradually builds up a strong game on the light squares and exchanges most of the pieces. Black's clever counterplay is neatly repulsed.

G.Wheeler v K.Derrick

1.c2-c4 Ng8-f6; 2.Nb1-c3 e7-e5; 3.a2-a3 Bf8-e7; 4.g2-g3 c7-c6; 5.Ng1-f3 d7-d6; 6.Bf1-g2 a7-a5; 7.d2-d3 Nb8-d7; 8. 0-0 Nd7-c5; 9.Ra1-b1 Nc5-e6; 10.b2-b4 a5xb4; 11.a3xb4 0-0; 12.Bc1-d2 Qd8-c7; 13.Qd1-b3 Bc8-d7; 14.Rf1-c1 Rf8-e8; 15.Qb3-b2 Be7-f8; 16.Nf3-g5...

Starting the gradual process of exchanging pieces. It also opens the bishop's diagonal.

16...h7-h6; 17.Ng5xe6 Bd7xe6; 18.b4-b5...

White is beautifully prepared for this thrust.

18...Nf6-d7; 19.Bd2-e3 Re8-b8; 20.Rb1-a1 f7-f5; 21.Ra1-a2 Bf8-e7; 22.Rc1-a1 Ra8xa2; 23.Ralxa2 Be7-f6; 24.Qb3-b4...

Threatening 25.b5-b6 followed by 26.Qb4xd6.

24...Bf6-e7; 25.Ra2-a7 Qc7-c8; 26.Qb4-a4...

Securing the a-file and threatening to capture on c6.

26...c6-c5; 27.Qa4-a2 Be7-d8; 28.Nc3-d5 Nd7-f6; 29.Nd5xf6+ Bd8xf6; 30.Be3-d2 Bf6-g5; 31.Bd2xg5 h6xg5; 32.Qa2-a5 b7-b6;

White threatened 33.Qa5-b6 winning the b-pawn. Note that, before the exchange of bishops, Black could defend against this threat by ...Bf6-d8. Now, of course the whole white square diagonal is open and White does not need his queen on the a-file to cover a8. He decides instead to fianchetto it!

33.Qa5-a1 Qc8-d8; 34.Bg2-c6 f5-f4; 35.Qa1-f1 Qd8-f6; 36.Qf1-g2 g5-g4; 37.Bc6-d5.

Now he even exchanges the bishops since his queen can hold a8 along the diagonal.

37...f4-f3!;

This is his only real chance for counterplay otherwise White's hold on the seventh rank wins easily.

38.Bd5xe6+ Qf6xe6; 39.e2xf3 Qe6-f5; 40.f3xg4 Qf5xd3; 41.Qg2-c6...

Intending to double on the 7th rank. If now 41...e5-e4; 42.Qc6-d7! Qd3-d1+; 43.Kg1-g2 Qd1-f3+; 44.Kg2-h3... and the White King has escaped.

41...Rb8-f8; 42.Qc6-b7 Qd3-d1+; 43.Kg1-g2 Qd1xg4; 44.f2-f3...

This was the point of 42.Qc6-b7 keeping the queen on the diagonal to f3.

44...Qg4-g5; 45.Qb7-d5+ Kg8-h7; 46.h2-h4 Qg5-f6; 47.Ra7-d7! Rf8-d8; 48.Rd7-b7!..

Now that the rook has been shifted from the f-file, White can chase the delicate b-pawn.

48...Kh7-h8; 49.Rb7xb6 e5-e4; 50.Qd5xe4 Qf6-b2+; 51.Kg2-h3 Qb2-c1; 52.Rb6-b7 Rd8-f8; 53.Rb7-e7 Resigns.

Black cannot prevent 53.Re7-e8 with a winning Q+P ending.

However, did you see 43...Rf8xf2+!; with perpetual check by 44.Kg2xf2 Qd1-d2+; 45.Kf2-g1 Qd2-d1+; 46.Kg1-g2 Qd1-d2+; 47.Kg2-h3 Qd2-h6+; ?

Round 5 D.Shire v S.Elliott Slav Defence

1.d2-d4 d7-d5; 2.c2-c4 c7-c6; 3.Nb1-c3 e7-e6; 4.e2-e4 d5xe4; 5.Nc3xe4 Bf8-b4+;

6.Bc1-d2 Qd8xd4; 7.Bd2xb4 Qd4xe4+; 8.Bf1-e2...

A well-known gambit in which Black often captures the g-pawn too.

8...Nb8-a6; 9.Bb4-c3 Ng8-e7; 10.Ng1-f3 O-O; 11. O-O...

The battle is now all about Black attempting to consolidate his extra pawn without allowing White a tactical breakthrough.

11...Ne7-g6; 12.Rf1-e1 Qe4-f4; 13.g2-g3 Qf4-c7; 14.Qd1-d4 f7-f6; 15.Ra1-d1 e6-e5; 16.Qd4-e3 Bc8-f5; 17.h2-h4!...

Intending 18.h4-h5 Ng6-e7; 19.Nf3xe5 f6xe5; 20.Bc3xe5 Qc7-b6; 21.Be5-d4 c6-c5; 22.Bd4xg7... with two pawns and an attack for the piece. 21.c4-c5!? may be even better, since 21...Qb6xc5; 22.Be2xa6! Qc5xe3; 23.Ba6-c4+... wins back the piece and 21...Na6xc5; 22.Be5-d6... does the same.

17...Bf5-g4; 18.Nf3xe5! Bg4xe2;

Seemingly, Black is winning as 19.Ne5xg6 Be2xd1; 20.Qe3-e6+ R(orQ)f8-f7; gets White nowhere. But White has foreseen a fine in-between move.

19.Rd1-d7! Qc7-c8;

Not 19...Qc7-b6; when 20.Bc3-d4... wins a decisive tempo: 20...c6-c5; 21.Ne5xg6 Rf8-e8(otherwise Qe3-e7 wins); 22.Ng6-e7+ Kg8-h8; 23.Qe3xe2 c5xd4; 24.Qe7-g6+!! h7xg6; 25.Qe2xe8+ Ra8xe8; 26.Relxe8+ Kg8-h7; 27.Rd7-d8!... and Black must give back the queen or be mated.

If instead of 22...Kg8-h8 he goes to f8, the King comes under fire by 23.Qe3xe2 c5xd4; 24.Qe2-h5...he must keep the rook under attack; 19...Qc7-b8; loses at once to 20.Ne5xg6 threatening Qe3-e7. After the text move:

20.Ne5xg6 Qc8xd7; 21.Ng6xf8 Ra8xf8; 22.Qe3xe2... is an easy draw. So... Draw Agreed.

A grandmaster draw?

The next two games are from the 1986 Challengers Tournament:

D.Woodruff v C.Peters

QP English Defence

This game needs no detailed comment. Black weakens his white squares early on and White builds up a well controlled Kingside attack using those white squares and his command of greater space. The winning queen sacrifice is nice.

1.c2-c4 b7-b6; 2.Nb1-c3 Bc8-b7; 3.d2-d4 e7-e6; 4.e2-e4 Bf8-b4; 5.Bf1-d3 Ng8-f6; 6.d4-d5 e6xd5; 7.c4xd5 Bb4xc3?!+; 8.b2xc3 Bb7-a6?!; 9.Ng1-e2 Qd8-e7; 10.f2-f3 O-O; 11. O-O d7-d6; 12.Ne2-d4 Ba6xd3; 13.Qd1xd3 Rf8-e8; 14.Bc1-g5 Qe7-e5; 15.Qd3-d2 Nf6-d7; 16.Ra1-e1 f7-f6; 17.Bg5-f4 Qe5-e7; 18.Nd4-f5 Qe7-f8; 19.Qd2-f2 Nd7-e5; 20.Qf2-g3 Ne5-g6; 21.Bf4-d2 Kg8-h8; 22.f3-f4 Nb8-d7; 23.Nf5-d4 Nd7-c5; 24.Qg3-f3 Qf8-f7; 25.Rel-e3 Ng6-e7; 26.f4-f5 Nc5-d7; 27.Qf3-h3 Nd7-e5; 28.Re3-g3 Re8-g8; 29.Qh3xh7+! Kh8xh7; 30.Rg3-h3+ Resigns. (It is mate next move).

R.Noyce v D.White

Sicilian Grand Prix Attack

This is a good example of the power of the idea of 2.f2-f4 followed by Bb5xc6 in the Sicilian. Despite losing a pawn (or maybe it was a sacrifice), White is able to build up a smooth and easy attack.

1.e2-e4 c7-c5; 2.f2-f4 Nb8-c6; 3.Bf1-b5 g7-g6; 4.Bb5xc6 b7xc6; 5.d2-d3 Bf8-g7; 6.Ng1-f3 d7-d6; 7. O-O e7-e6; 8.c2-c4...

This is quite a good idea instead of Nb1-c3 first. It keeps the black centre pawns under restraint. There was a chance that Black might otherwise have engineered the c4 break for himself.

8...Ng8-e7; 9.Nb1-c3 Ra8-b8; 10.Qd1-c2 O-O; 11.b2-b3... .

Having secured the centre with c4, he can afford this slow build-up, which aims to exchange black-squared bishop.

11...d6-d5; 12.Bc1-b2 Qd8-c7; 13.Nc3-e2 Bc8-a6; 14.Kg1-h1!? Bg7xb2; 15.Qc2xb2 d5xc4; 16.d3xc4 Ba6xc4; 17.Nf3-e5...

Black has won a pawn as the b-pawn is pinned, but the extra pawn is doubled on an open file and meanwhile he has accepted weak black square. Now White builds his attack neatly.

17...Bc4xe2; 18.Qb2xe2 f7-f6;

The threat was 19.Ne5-g4 but the text move weakens the e-pawn, allowing the following manoeuvre:

19.Ne5-d3 c5-c4;

Undoubling the pawns and hoping perhaps to close the file?

20.Nd3-c5! Qc7-c8; 21.Qe2xc4 Kg8-f7; 22.f4-f5...

Decisive. Black's position has crumbled alarmingly.

22...g6xf5; 23.e4xf5 Ne7-d5; 24.f5xe6+ Kf7-e7; 25.Nc5-d7 Rb8-b5; 26.Nd7xf8 Ke7xf8; 27.Ra1-e1 Qc8-c7; 28.e6-e7+ Resigns.

The remainder of this feature is on the 1987 Congress. The first game is one of David Le Moir's.

M.Adams v D.Le Moir

Ruy Lopez Schliemann Defence

1.e2-e4 e7-e5; 2.Ng1-f3 Nb8-c6; 3.Bf1-b5 f7-f5; 4.Nb1-c3 f5xe4; 5.Nc3xe4 Ng8-f6; 6.Qd1-e2 d7-d5; 7.Ne4xf6+ g7xf6; 8.d2-d3...

8d2-d4... putting immediate pressure on Black's centre is normal.

8...Bf8-g7; 9. 0-0 0-0; 10.Bb5xc6 b7xc6;

Black already has a slight advantage: he has a big centre which is fairly safe since White cannot put it under heavy pressure. White's next is an interesting idea to disconnect the black rooks - and he later takes full advantage of their discomfort. However, the move is objectively questionable as it weakens c3 and removes the bishop's influence from the central squares.

11.b2-b3?! Bc8-g4; 12.h2-h3 Bg4-h5; 13.Bc1-a3 Rf8-f7; 14.Qe2-e3...

The pin was very awkward. Now I considered the clever idea 14...d5-d4; 15.Qe3-e4 f6-f5; 16.Qe4xc6 e5-e4; 17.d3xe4 Bh5xf3; which gives me a good Kingside attack. But I dropped the whole thing when I saw 17.Nf3-g5!

14...Bh5xf3?;

This throws away most of Black's advantage. There was no real threat of the Nf3-h4-f5 manoeuvre. Both 14...Qd8-d7 and 14...d5-d4; 15.Qe3-e4 Qd8-d7!; (instead of f6-f5 as I had analysed) would prepare the centralisation of the last rook and a massive advance of Black's central pawns. Simplification is the last thing Black should be seeking in this position.

15.Qe3xf3 f6-f5; 16.Ra1-d1!...

The "mysterious rook move". An advance of Black's central pawns will open lines for this rook and give White dangerous counterplay.

16...Qd8-h4; 17.c2-c4! e5-e4; 18.d3xe4 d5xe4; 19.Qf3-e2 Ra8-e8; 20.f2-f3!...

Adams does not wait to be mown down, but challenges the pawns immediately. An exchange of pawns would remove the remainder of Black's advantage, while 20...e4-e3; 21.f3-f4... would make the pawn difficult to defend as e7 is covered by the white bishop.

20...Qh4-h5!?!; 21.Rf1-e1 f5-f4!?!;

Aggressive play. Now f3xe4 f4-f3!; shatters the White fortress. Meanwhile ...e4-e3 is threatened, setting up a far advanced pawn wedge. In apparently dire circumstances, Adams produces a move (and a plan) which is the logical consequence of much of his play to date.

22.Rd1-d3!...

Very cool play, exploiting the pin in order to double rooks quickly.

22...e4-e3; 23.Re1-d1 Bg7-f6;

Black's position looks tremendous, but White's hold on the d-file makes it difficult for him to force the exchange of all the rooks - a necessary step

in the exploitation of the pawn wedge. Black must also look out for g2-g3... liquidating the advanced pawns. He decides to prevent this by bringing a pawn to h4, but White uses the breathing space to bring his bishop round to e1 - reducing the threat from the e-pawn - and to increase the usefulness of the d-file by creating entry squares for his rooks.

24.Ba3-b4 Qh5-f5; 25.Bb4-e1 h7-h5? (Re8-e7-d7 or Rf7-f8 and Re8-d8 to exchange rooks was better); 26.b3-b4 h5-h4; 27.Kg1-h2 Re8-e7; 28.b4-b5! c6-c5?; (Better was Qf5-c5) 29.Rd2-d5 Re7-e5; 30.Rd5xe5 Qf5xe5; 31.Rd1-d5 Qe5-e7;

31...Qe5-a1; was worth considering. Now White is in charge, as the pawns at f4, h4 and c5 can all be attacked. To add to my troubles, I was in serious time-trouble and Adams, as usual, had plenty of time in hand.

32.Qe2-d3 Rf7-g7!;

Maybe I can work up play against g2?

33.Qd3-f5 e3-e2!?!; 34.Rd5-d2...

Threatening to win the e-pawn by Qf5-e4. Now with seconds to go for the last move before the time control, I found a move which leads to a remarkable draw.

34...Bf6-c3!; 35.Qf5-c8+(sealed) Kg8-f7;

I had seen 35...Kg8-h7; 36.Rd2-d5! Bc3xe1; 37.Rd5-h5+ Kh7-g6; 38.Qc8-f5 mate. but 36...Bc3-f6!; 37.Rd5-h5+ Kh7-g6; 38.Qc8-f5+ Kg6-f7; 39.Qf5xf4 Qe7-d6!; 40.Qf4xd6 c7xd6; 41.Kh2-h1... (threat was Bf6-e5+ and Be5-g3) leads to a dangerous position for both sides where Black's passed pawn is particularly threatening.

36.Qc8-f5+...

Back again. Winning the Queen by 36.Rd2-d7... only gives him perpetual check, because after 36...Bc3xe1; 37.Rd7xe7+ Kf7xe7; Black threatens mate by ...Be1-g3+; and e2-e1=Q and there is no forced win of the e-pawn.

36...Kf7-g8; Qf5-d5+ Kg8-f8;

Not 37...Kg8-h8; 38.Qd5-d8+! Kh8-h7; (38...Qe7xd8; 39.Rd2xd8+... uncovers an attack on the bishop at c3) 39.Qd8-d3+... wins the bishop at c3.

38.Qd5-f5+...

Back again, this time because 38.Qd5-d8+ Qe7xd8; 39.Rd2xd8+ Kf8-e7!; 40.Be1xh4+ (40.Be1xc3 Ke7xd8; 41.Bc3xg7 e2-e1=Q; wins for Black) Bc3-f6; 41.Bh4xf6+ Ke7xf6; 42.Rd8-e8 Rg7-e7; leaves White helpless. So White takes the DRAW by repetition.

A good game to show how well David Le Moir analyses his games. A good result for him especially as Adams smashed him in last year's Congress.

The remaining three games are from the other tournaments, the first two from the Challengers and the last from the Reserves.

A.Pleasants v T.O'Mahoney French Tarrasch Variation

1.e2-e4 e7-e6; 2.d2-d4 d7-d5; 3.Nb1-d2 Hg8-f6; 4.e4-e5 Nf6-d7; 5.Bf1-d3 c7-c5; 6.c2-c3 Nb8-c6; 7.Ng1-e2 c5xd4; 8.c3xd4 f7-f6; 9.e5xf6 Nd7xf6; 10. O-O Bf8-d6; 11.Nd2-f3 O-O; 12.Ne2-c3 Qd8-e8; 13.Rf1-e1 Kg8-h8; 14.Bc1-g5 Qe8-h5;

A typical situation in this line. Black already has threats on the Kingside (15...Bd6xh2+; 16.Nf3xh2 Qh5xg5); White's reaction is to create a weakness, which is almost invariably a mistake if there is an alternative. You can understand his nervousness at playing 15.Qd1-d2... allowing 15...Nf6-g4; with all kinds of possibilities in the air.

15.h2-h3 Bc8-d7; 16.Qd1-d2 h7-h6!; 17.Bg5-f4...

All replies have their disadvantages. 17.Bg5xf6... allows Black quickly to double rooks on the f-file; 17.Bg5-e3... allows 17...e6-e5; 17.Bg5-h4 allows 17...Nc6xd4; 18.Nf3xd4 Qh5xh4; 19.Nd4xe6 Bd7xe6(Nf6-g4!?!); 20.Re1xe6 Bd6-c5; 21.Ral-f1 Nf6-h5; intending ...Nh5-g3 and the breakthrough on f2.

17...Nf6-e4!; 18.Re1xe4...

The queen and bishop were both attacked and after any other capture on e4 ...Bd6xf4 also attacks the queen.

18...d5xe4; 19.Bf4xd6 e4xf3; 20.Bd6xf8 Ra8xf8; 21.Bd3-e4 f3xg2; 22.Ra1-e1...

Giving up the h-pawn rather than allow 22.Be4xg2 e6-e5!; when the "bad" bishop joins the attack.

22...Qh5xh3; 23.Be4xg2 Qh3-f5; 24.Re1-e3 (intending Re3-f3) Qf5-f4;
25.Bg2-e4 Nc6xd4!:

A nice sacrifice, forcing entry on f2, the logical conclusion of Black's attack.

26.Qd2xd4 Qf4xf2+; 27.Kg1-h1 Qf2-f1+; 28.Kh1-h2 Rf8-f2+; 29.Kh2-g3 Qf1-g1+;
30.Kg3-h4 Rf2-h2+; 31.Re3-h3 Qg1-g5 mate.

D.White v M.Lewis

French Irregular

White builds up a sacrifice on e6 and it leads almost by force to a winning ending.

1.e2-e4 e7-e6; 2.b2-b3 d7-d5; 3.Bc1-b2 d5xe4; 4.Nb1-c3 Ng8-f6; 5.Qd1-e2 b7-b6;
6.Nc3xe4 Bc8-b7; 7.Ne4xf6+ g7xf6; 8.Ng1-f3 Rh8-g8; 9.g2-g3 Nb8-d7; 10.Bf1-h3
Qd8-e7; 11. 0-0-0 0-0-0; 12.Rh1-e1 Bf8-h6; 13.Nf3-d4 Qe7-c5; 14.f2-f4
Kc8-b8; 15.Bh3xe6! f7xe6; (15...Rg8-e8; 16.Qe2-h5!...) 16.Nd4xe6 Qc5-d6;
17.Ne6xd8 Rg8xd8; 18.Qe2-e7! Kb8-c8; 19.Qe7xd6 c7xd6; 20.Re1-e7 Bh6-f8;

With weak d, f and h-pawns, Black cannot hope to survive by passive play.

21.Re7xh7 Rd8-e8; 22.d2-d3!Re8-e2; 23.Bb2-c3 Bb7-d5; 24.Rd1-e1 Re2xe1+;
25.Bc3xe1 Kc8-d8; 26.Be1-c3 Kd8-e8; 27.Kc1-d2 Bd5-g8; 28.Rh7-h4 Ke8-e7;

Black simply cannot get his pieces coordinated and he soon finds himself helpless when the rook switches its attention to the queenside.

29.f4-f5 Nd7-e5; 30.Bc3xe5 d6xe5; 31.Rh4-a4 a7-a5; 32.b3-b4! Ke7-d7; 33.b4xa5
b6xa5; 34.a2-a3 (Ra4xa5?? Bf8-b4+) Bg8-h7; 35.g3-g4 Kd7-c6; 36.Ra4xa5
Bf8-h6+; 37.Kd2-e2 Bh6-g5;; 38.Ra5-a8 Resigns.

Anne Spiller v A.Rookes

Vienna Opening

This was the nicest game I came across from the Reserves Tournament which has a good combinative finish.

1.e2-e4 e7-e5; 2.Nb1-c3 Ng8-f6; 3.g2-g3 Bf8-c5; 4.Bf1-g2 0-0; 5.Ng1-e2
Nb8-c6; 6.d2-d3 h7-h6; 7. 0-0 d7-d6; 8.Nc3-a4 Bc8-e6; 9.Na4xc5 d6xc5;
10.f2-f4 b7-b6; 11.f4-f5 Be6-c8; 12.h2-h3...

White's play is very direct. She swiftly advances the kingside pawns then brings up the heavy artillery to back up a breakthrough attempt. Black finds himself unable to find a good defensive setup on the Kingside and completely fails to create any counterplay on the other side.

12...Bc8-a¹³6; b2-b3 Ra8-b8; (b5 and c4 should be played as soon as possible)
14.Bc1-e3 Nc6-d4; 15.Ne2xd4 c5xd4; 16.Be3-d2 c7-c5; 17.g3-g4 Nf6-h7;
18.Qd1-e1 Qd8-e7; 19.Qe1-g3 Rf8-e8; 20.h3-h4 f7-f6; 21.Bg2-f3 Rb8-c8;
22.Rf1-f2 Kg8-h8; (The King should have moved to the centre) 23.Rf2-h2
Re8-g8; 24.Kg1-f2 Ba6-b5; 25.g4-g5 f6xg5; 26.h4xg5 Rc8-c6; 27.g5-g6!...

White makes no attempt to win the h-pawn (which would have required some preparation) but goes straight for the jugular.

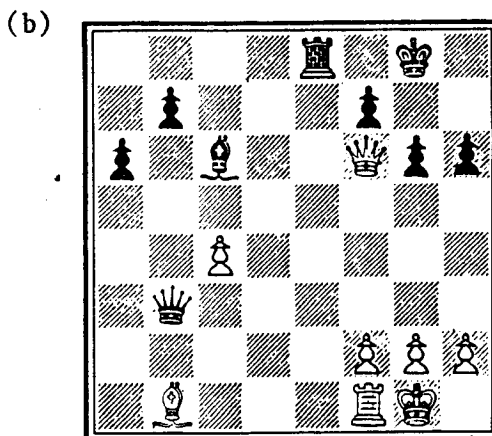
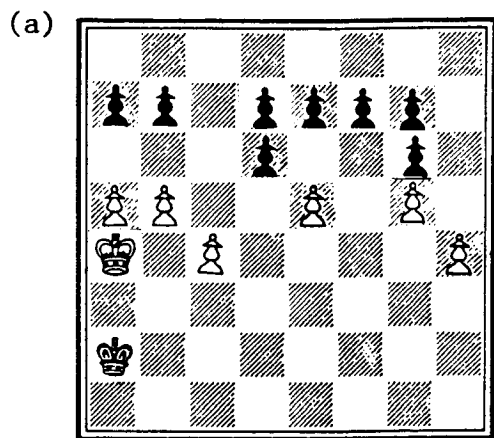
27...Nh7-f8; 28.Bd2xh6! g7xh6; 29.Rh2xh6+ Kh8-g7; 30.Ra1-h1...

Although the threat appears to be to win the queen by 31.Rh6-h7+ Nf8xh7;
32.Rh1xh7+... there is a far more dangerous threat which Black is powerless to prevent.

30...Qe7-e8; 31.Rh6-h7+! Nf8xh7; (...Kg7-f6; 32.Qg3-h4 mate) 32.g6xh7+!
Kg7-f6; 33.h7xg8=Q Resigns.

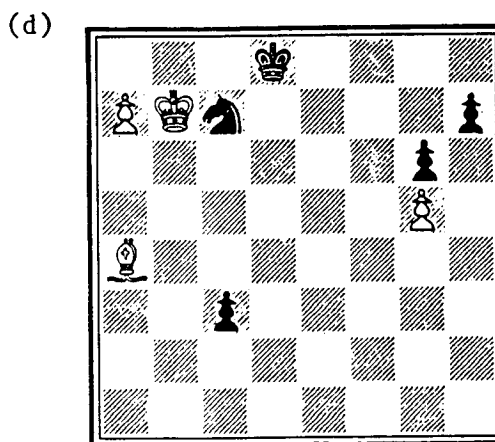
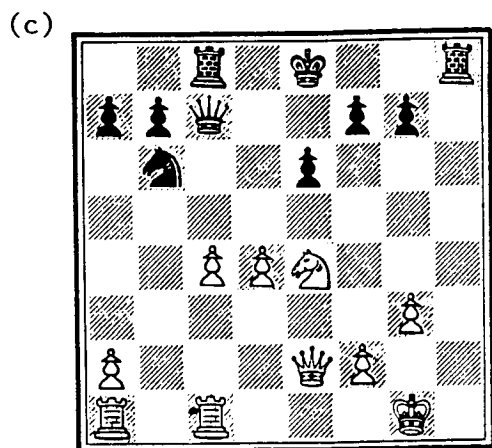
My thanks to David and others for their contributions in this feature.

Can you solve these problems without looking at the answers?



White to play and draw.

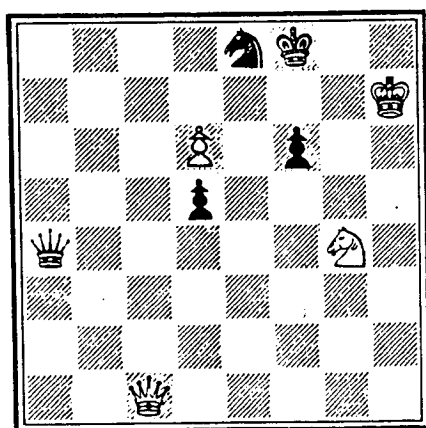
Black, to move, has to consider whether White can play Bb1xg6. Advise him.



Can you see the reason why, in this position, Black does not play Nb6xc4? What reason has he for castling? And is that a good move?

Black said: "Zugzwang, I resign". Do you agree with his view?

Solutions are on Page 27 but try not to look until you have solved them. Finally, here is this quarter's Competition:



White to play and Win.

(If you have solved the previous 4 you will have no problem solving this one. If not, here's a clue: Which combination of pieces can you not normally mate with?)

Prize of £5 for first correct solution out of the bag on 1st July 1988.

I continue the Congress Round-Up from where I left off in the January 1988 Edition, namely, on the Stroud Quickplay Congress on Sunday 6 December 1987 which I attended but didn't play in. This report however was written by Cyril Breach:

The Huge Stroud Quickplay Chess Congress took place at the Subscription Rooms on Sunday 6 December 1987 and attracted a total of 187 players from many parts of the country and a thoroughly enjoyable day's chess was had by all those who took part.

Thanks to the financial support given by Unilever Plc and Hilltop Garage (Eastington) the prize money was able to be increased to well over £300. The expenses involved in organising these big events is highly costly and the support was most welcome.

A very strong Open Tournament went to the two highest graded players as did the Premier Section. The major was won by a highly graded Bristol Junior and the Minor to an Ungraded Oxford player.

Apart from the interest shown by the topclass players in the Open, it was quite remarkable to see the number of youngsters who made considerable journeys to play in the Minor. The ages of these lads and lasses varied from as young as 7 years old! It was certainly nice to see their enthusiasm for the game and, who knows, there may have been future strong County-class players taking part.

The Congress was controlled by Ron Powis, the B.C.F Arbiter, in his accustomed efficient manner, dealing with minor problems without the slightest trouble and keeping the Congress going strictly to the timetable. He was ably assisted by the experienced P.Meade of Cheltenham and two newcomers to this difficult job: J.Carr, Cheltenham, and Mrs Newman of Kings Stanley. By the efficient way they carried out the job one would have thought they were old hands at it. Considerable help was given by some members of Stroud Chess Club and Peter Clarke, the veteran Grandmaster, made the long journey from Cornwall to provide the equipment and display a bookstall which did a good trade. Refreshments were provided by Mrs Breach and her family who were able to keep a large supply of tea and coffee going all day together with a never-ending supply of grilled sausages and bacon and various sandwiches to the players.

It is certain that the ultimate winner of this popular event was the game itself, CHESS and let's hope it will be the same again when the Congress is staged over the same weekend next year.

RESULTS

Open (30 entries)

1st equal R Haydon (Swindon) and S Le Blanq (London) $5\frac{1}{2}$ out of 6 points.

3rd S Zeidler (Devizes/Swansea)

Grading Prize A Long (Cardiff)

Premier (37 entries)

1st equal R Dixon (Witney) and M Eastwood (Street)

3rd equal A Toll (Hereford) and S Dilke (Cheltenham)

Grading Prize L McKinley (Bridgwater), J Hastings (Oxford), L Wood (Glastonbury) and A Copeman (Worcester)

Major (53 entries)

1st M Daniels (Bristol)

2nd equal G Cartwright (Oxford) and T Marke (Bristol)

4th equal A Ponting (Westbury Wilts), A Price (Taunton), A McIntosh (Oxford) and A Gettings (Gloucester)

Minor (67 entries)

1st A Baker (Oxford)

2nd B Keohane (Hereford)

3rd equal L Zinc (Gloucester) and H Maris (South Wirral)

(I have printed the whole of this report to show Congress Secretarys exactly what I would like to receive from them when submitting a Report. I can then edit it accordingly. As mentioned in the previous edition it is not acceptable just to say "J Bloggs won with $5\frac{1}{2}/6$; P Smith 2nd $5/6$ etc. Perhaps other Congress Secretarys will now follow the extremely experienced Cyril Breach in sending a reasonable lengthed report).

All the main prizes in the Major (Under 156) and Minor (Under 116) tournaments stayed in the West Country: C S B Howe (Stock Exchange), M Horne (Exmouth) and A D Primett (Southbourne) all with 4½ out of 5 came first in the Major with P J Brooks (Bideford), J Fathers (Plymouth), and K Watts (Exeter) all equal fourth with 4 points. Grading Prizes went to: B P Sweeney (Portsmouth) A Jones (Exeter) J Gorodi (Teignmouth) and K Roberts (Keynsham); and in the Minor: M Abbott (Exeter) and Z Daune (Plymouth) came first equal on 5 points, J Fox (Wimborne) 4½ points, third, and A Coe (Torquay), G Quack (Exmouth), G Reed (Tiverton), S Turvey (Barnstaple) and A R Willis (Exeter) all fourth equal on 4 points. Grading Prizes went to: J Adkin (Morchard Bishop) S Browning (Abergavenny) and K Wilkinson (St Austell).

It was of great personal interest to see jovial Zin Daune return to the fray after an interval of several years, coming first equal in the Minor. He assured me that he had slowed down and intended to take the game more seriously. This was evident as instead of moving instaneously as was his want, he actually had 17 MINUTES on his clock before completing one of his five wins.

Unfortunately, five rounds is hardly sufficient to sort out 87 players, hence the many winners in the Minor. It was also disappointing to find that the Cornwall - Hampshire County Match was played in Exeter on the Saturday of the Congress. I am sure by the turn-out at the Congress that both County teams were extremely weakened, especially Cornwall.

Finally, the 43rd West of England Championships took place at Weston-Super-Mare over the Easter weekend (31 March to 4 April 1988), in which 110 Competitors took part. This Congress will be featured in great detail in the July 1988 Edition with David Le Moir again writing in his impeccable style. I therefore propose to say no more other than in the absence of Michael Adams the Championship was won by someone who had never won it before although there were several previous winners taking part. It contained many games of great interest and I trust you can wait until July for the results.

Richard Rendell

<u>DATES FOR YOUR DIARIES</u>		
<u>DATE (1988)</u>	<u>EVENT</u>	<u>CONTACT NUMBER</u>
14 May	County Championship Quarter-Finals	
20 May to 22 May	Street Congress (incorporating the Somerset Championships)	(0458) 42068 (Brian Francis)
4 June	County Championship Semi-Finals	
2 July	County Championships Finals	
9 July to 10 July	West of England Junior Championship at Street, Somerset.	(0458) 42068 (Brian Francis)
16 July	Peterborough Software National Club Finals	
15 August to 18 August	British Speed Chess Championship	(01) 3879494 xt 5237
20 August to 29 August	Lloyds Bank Masters	(01) 8066518
4 September to 10 September	38th Annual Paignton Congress	(0803) 23345
17 September	WECU Senior Jamboree at the Preston Centre, Yeovil	

THE MORE UNUSUAL CHESS OPENINGS COLUMN

As promised in the July 1987 Edition this is a new feature and will be written by West of England players. The first is from Gary Lane who I am sure needs no introduction. I think you will find this game an exceptional one to start a new feature.

I hope this game will inspire others to put pen to paper and send me their thoughts and games. I am sure many of you have unusual openings in your armoury that you would be prepared to give an airing without giving too much away.

FACT OR FANTASY

By Gary Lane

Gedult v Rabe

Paris 1968.

1.f2-f3...

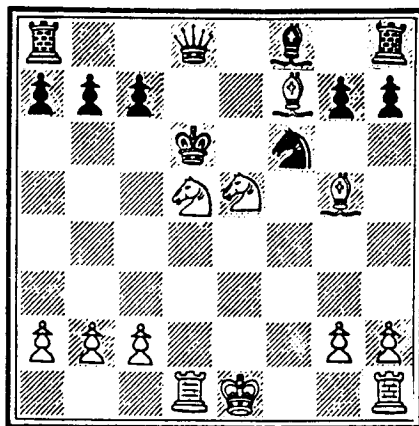
Why not amaze your friends with this move? Apart from causing your opponent a fit of uncontrolled laughter, it has the benefit of transposing into fairly respectable lines. For Example, The Blackmar-Diemer Gambit: 1.d2-d4 Ng8-f6; 2.Nb1-c3 d7-d5; 3.e2-e4 d5xe4; 4.f2-f3...; also the Fantasy variation of the Caro-Kann. F3 is also playable against the Pirc Defence and other Indian systems.

1...d7-d5; 2.e2-e4 d5xe4; 3.Nb1-c3 e4xf3; 4.Ng1xf3 Bc8-g4; 5.Bf1-c4 e7-e6; 6.d2-d4 Nb8-c6; 7.d4-d5 e6xd5; 8.Bc4xd5 Nc6-e5;

This move invites disaster but thats part of the fun!

9.Nf3xe5!! Bg4xd1; 10.Bd5xf7+ Ke8-e7; 11.Bc1-g5+ Ng8-f6; 12.Nc3-d5+ Ke7-d6; 13.Ralxd1...

White has 5 active pieces for his Queen although the knight on e5 is en prise. A fair swop provided he can finish off the attack on the Black King. He also has open lines in the centre with the King out in the open.



The King has no squares to retreat to and therefore must come forward: 13...Kd6xe5; 14.Bg5-f4+ Ke5-f5; 15.Bf4xc7 Qd8-c8;

Of course by taking the bishop or the knight on d5 leaves Black a pawn down and White with all the play. Thus the Queen must move onto a poor square and take a backroom position whilst the King is destined to advance unwillingly to the place of its doom.

Note also, the sacrifice of the f-pawn now allows White to get his King safe, bring his other rook into play and check the King at the same time.

16. O-O+ Kf5-g4; 17.Rd1-d4+ Kg4-g5; 18.Bc7-f4+ Kg5-h4; 19.Nd5xf6 g7xf6; 20.Bf4-e3+ Qc8-g4; 21.g2-g3+ Kh4-h3; 22.Bf7-e6!!...

Threatening mate: 22...Qg4xe6 Rd4-h4++, therefore the next move is forced:

22...h7-h5; 23.Rd4xg4 h5xg4; 24.Be6-d5 Resigns. There is no way of stopping 25.Bd5-g2++.

Classic finish!

Gary Lane

COUNTY CHAMPIONSHIP 1987/8 MATCH RESULTS

Further to the report on the County Match Results in the last edition, I can now give you the remainder of the Match Results and the Final Table in both the First and Second Team Championships. Again I have still not received Match Reports from those Matches in which the individual scores were not listed. However, I should be shortly receiving the Master-list from the Fixture Secretary and perhaps, if there is enough room, print these details in the July 1988 Edition.

Again, I apologise if any names are spelt incorrectly but these are direct copies from the Match Captain's Results and the spelling is taken from your own Match Captain's report. The grades quoted are predominately those of 1986/7. The team listed first had White on the odd numbered boards between 1 and 16 and Black between 17 and 32.

I start by recapping the positions at the end of 1987:

<u>First Team.</u>		<u>Second Team</u>	
1.Devon	6 out of 6	1.Devon	6 out of 6
2.Gloucestershire	6 out of 6	2.Gloucestershire	4 out of 6
3.Hampshire	4 out of 4	3.Somerset	4 out of 6
4.Somerset	4 out of 6	4.Hampshire	2 out of 4
5.Dorset	2 out of 8	5.Cornwall	2 out of 6
6.Cornwall	0 out of 6	6.Dorset	2 out of 8
7.Wiltshire	0 out of 8	7.Wiltshire	2 out of 8

Wiltshire v Dorset

Played at Wilton School, Wilton, Salisbury on 16 January 1988.

1.M.C.TRURAN (202) 0-1 S.J.SHUTLER (200) 2.T.HEADLONG (193) $\frac{1}{2}$ - $\frac{1}{2}$ M.J.SIMONS (187) 3.R.HAYDON (198) 1-0 M.B.ISAACS (187) 4.S.ZEIDLER (202) 0-1 S.C.ROBINSON (185) 5.T.CRAIG (-) $\frac{1}{2}$ - $\frac{1}{2}$ M.R.CHARTER (185) 6.D.P.PERRETT (180) 1-0 R.M.PEGG (183) 7.Miss Jane GARWELL (173) 0-1 C.W.JOHNS (176) 8.B.R.JOHNSON (168) 0-1 J.F.CATCHPOLE (167) 9.D.E.WARD (157) 0-1 M.J.ROTH (166) 10.I.GREEN (-) 0-1 A.J.PLEASANTS (163) 11.D.L.O'BYRNE (154) 0-1 M.WADDINGTON (165) 12.M.A.STRANGE (156) 1-0 R.VALENTINE (159) 13.T.WOODWARD (148) $\frac{1}{2}$ - $\frac{1}{2}$ J.ANDERSON (159) 14.A.W.CHAMPION (146) 1-0 F.C.KINGDON (161) 15.R.W.RENDELL (154) $\frac{1}{2}$ - $\frac{1}{2}$ T.E.SIMMS (159) 16.A.D.PONTING (138J) 1-0 P.C.DEARLOVE (155)

Wiltshire I 7 - 9 Dorset I

17.M.J.MORTON (137) 0-1 J.C.ROWLEY (154) 18.J.E.MILWARD (131) 0-1 P.C.COLMER (152) 19.D.HEYWOOD (130) $\frac{1}{2}$ - $\frac{1}{2}$ H.D.NEEDHAM (151) 20.Mrs E.A.HARTFORD (128) $\frac{1}{2}$ - $\frac{1}{2}$ A.MILLERS (150) 21.R.MILLENER (-) 1-0 M.W.ADAMS (149) 22.R.CARVER (128) 1-0 S.A.CRANE (122) 23.R.F.WARDELL (130) 0-1 P.BRACKNER (141) 24.H.S.BAHIA (125) 0-1 P.EDGINGTON (139) 25.A.HURST (121) 1-0 J.A.BASSETT (131) 26.T.M.FLANAGAN (114) $\frac{1}{2}$ - $\frac{1}{2}$ D.J.CANNINGS (133) 27.N.G.ASHBY (115J) 0-1 P.FOSTER (134) 28.D.H.POTT (122) 0-1 M.J.SALES (130) 29.H.LIGHT (112) 1-0 A.D.PRIMETT (125) 30.M.TOMALIN (104) 0-1 D.G.E.RAPKINS (126) 31.G.S.ASHBY (95) $\frac{1}{2}$ - $\frac{1}{2}$ B.M.SHEINBAUM (125) 32.J.SYMONS (85J) 0-1 W.J.KELLY (124)

Wiltshire II 6 - 10 Dorset II

MATCH CAPTAINS REPORTS

Dorset (R.A.G.MARPLES)

On fielding our strongest team this year, we expected to win quite easily against Wiltshire but not a bit of it. In the end we were happy just to win the match. At the end of the Match day we were winning $6\frac{1}{2}$ - $5\frac{1}{2}$ and managed a further $2\frac{1}{2}$ - $1\frac{1}{2}$ in the games which were looked at after the Match, three of which were so close that they went for adjudication (Boards 2, 6 and 8). Wiltshire got 2 claims us 1. Our strength in depth got us through in the Second team Match. It was pleasing that all 16 games were decided on the day.

We now feel extremely confident of becoming Minor Counties Champions, with only Cornwall to be played.

Wiltshire (R.W.RENDELL)

We too fielded our strongest team this year and felt a little disappointed to lose. Yet we have managed again to give a stronger county a run for its money. In none of our matches have the first team been hammered. We look forward to playing Cornwall with relish.

Hampshire v Devon

Played at The Shrubbery Hotel, Ilminster on 16 January 1988.

1.M.J.YEO (204) 0-1 C.HEATH (195) 2.J.CORFIELD (197) $\frac{1}{2}$ - $\frac{1}{2}$ J.WHEELER (192)
3.M.J.BUCKMASTER (193) 0-1 G.WHEELER (186) 4.M.L.NEWBURY (175) $\frac{1}{2}$ -0
J.HUTCHINGS (189J) 5.S.W.KNOX (169) $\frac{1}{2}$ - $\frac{1}{2}$ B.HEWSON (189) 6.S.DEAN (165) $\frac{1}{2}$ - $\frac{1}{2}$
R.LINGHAM (171) 7.J.PILLAY (163J) $\frac{1}{2}$ - $\frac{1}{2}$ P.HARRIS (-) 8.Ed.HOLLAND (158J) 1-0
A.K.BOYNE (184J) 9.D.R.NEIL (155J) $\frac{1}{2}$ - $\frac{1}{2}$ A.SPICE (168) 10.M.HERION (130J)
 $\frac{1}{2}$ - $\frac{1}{2}$ T.THYNNE (162) 11.P.MILLER (165) $\frac{1}{2}$ - $\frac{1}{2}$ A.BRUSEY (166) 12.D.F.THOMPSON (151)
0-1 R.PHILLIPS (158) 13.M.HAGAN (143) $\frac{1}{2}$ - $\frac{1}{2}$ E.JONES (-) 14.L.C.WALTERS (142)
1-0 J.WALKER (-) 15.P.L.MARSHALL(141) 0-1 R.C.LUFFMAN (152) 16.S.J.KENT (140)
1-0 K.BLOODWORTH (149)

Hampshire I $7\frac{1}{2}$ - $8\frac{1}{2}$ Devon I

17.D.CULLIFORD (140) 0-1 J.HAYWARD (147) 18.D.BENNETT (110) 0-1 B.BOOMSMA(145)
19.K.CORNELIUS (125J) 0-1 J.RIDOLFO (115) 20.A.N.MILLS (139) 1-0 A.PICKERING
(145JO 21.S.LE FEVRE (136) 0-1 J.PARKER (145) 22.H.PRIOR (117) 1-0
M.TAVERNER (140J) 23.R.M.PRINCE (103) $\frac{1}{2}$ - $\frac{1}{2}$ D.HUTCHISON (142)

The remainder of the boards were defaulted by Hampshire. The Devon players were: E.G.SPARKE (137), R.M.BRUCE (149), Mrs R.M.BRUCE (148), M.HORNE (136), B.PENAGILON (136), Mrs J.THYNNE (136), R.V.CROSS (133), J.E.ALLEN (135) and R.H.JONES (126).

Hampshire II $2\frac{1}{2}$ - $13\frac{1}{2}$ Devon II

MATCH CAPTAINS' REPORTS

Hampshire (P.L.MARSHALL)

For various reasons we had to fielded a very weak team. So much so that 9 boards were defaulted. Yet the first team result was very close. Our juniors again did very well, 3 draws and a win on boards 7 to 10. The first team match was littered with draws, 9 in all. We had lost the second team match before we had even started and therefore the margin of defeat was no surprise. However, a noticeable win by H.Prior who beat a player graded 33 above him.

Devon (R.V.Cross)

We must consider ourselves very fortunate to come away from this match with a win in the first team. A much weakened Hampshire side seemed to be "easy pickings" but this was not the case. A high number of draws on boards we should really have won on made the match score very close. It was a surprise to see a County the size of Hampshire defaulting so many boards which made the second team match a mockery as we had won before the game started.

Somerset v Gloucestershire

Played at Sea Mills Community Centre, Bristol on 16 January 1988.

Somerset I 6 - 10 Gloucestershire I

Somerset II 8 - 8 Gloucestershire II

Alas yet again I have not received any more details than this despite much trying. I understand that Glos Match Captain, Richard Smith has moved to London and is difficult to get hold of and Somerset have qualified for the Minor Counties Championship Quarter-Finals on 14 May on which day their Match Captain, George Miller, is unavailable and who has passed his file onto someone else who is equally difficult to get hold of. Perhaps George will send me the details of the match in order that they can be printed in the next edition.

Devon v Somerset

Played at Exeter on 20 February 1988.

1.C.HEATH (195) $\frac{1}{2}$ - $\frac{1}{2}$ C.J.WEEKS (170) 2.J.WHEELER (192) $\frac{1}{2}$ - $\frac{1}{2}$ G.I.MILLER (165)
3.G.WHEELER (186) $\frac{1}{2}$ - $\frac{1}{2}$ A.L.HILL (169) 4.J.HUTCHINGS (189J) $\frac{1}{2}$ - $\frac{1}{2}$ J.A.BORKOWSKI (15)
5.B.HEWSON (189) 1-0 S.BONIFACE (158) 6.N.DOWN (178) 1-0 R.W.GREGORY (165)
7.R.LINGHAM (171) 1-0 G.N.JEPPS (150) 8.P.HARRIS (-) 0-1 D.A.JONES (159)
9.A.SPICE (168) 1-0 R.HARDY (157) 10.T.THYNNE (162) 0-1 J.E.FEWKES (155)
11.A.BRUSEY (166) 1-0 C.E.WINCH (154) 12.R.J.PHILLIPS (158) 1-0 R.J.TABOR (154)
13.A.STARKIE (151) $\frac{1}{2}$ - $\frac{1}{2}$ H.G.THOMAS (152) 14.J.H.HAYWARD (147) 1-0 D.C.WOOD (160)
15.B.H.BOOMSMA (145) 0-1 A.HIBBITT (-) 16.K.BLOODWORTH (149) 0-1 B.TOWERS (142)

Devon I $9\frac{1}{2}$ - $6\frac{1}{2}$ Somerset I

17.J.RIDOLFO (115) 1-0 C.T.McKINLEY (140) 18.R.M.BRUCE (149) 1-0 T.A.WALLIS (14)
19.J.PARKER (145) 0-1 B.J.FRANCIS (140) 20.A.PICKERING (145J) 1-0 J.A.KLIMEK
(159J) 21.K.WATTS (146) 1-0 R.MAISHMAN (132) 22.E.G.SPARKER (137) $\frac{1}{2}$ - $\frac{1}{2}$ R.J.HIRONS
(124) 23.D.HUTCHISON (142) $\frac{1}{2}$ - $\frac{1}{2}$ R.J.BAGSHAW (131) 24.B.J.PENALIGON (136) 1-0
P.UNDERWOOD (132) 25.M.HORNE (136) $\frac{1}{2}$ - $\frac{1}{2}$ C.J.FRANCIS (109J) 26.R.SHAPLAND (136J)
 $\frac{1}{2}$ - $\frac{1}{2}$ P.WOOD (97J) 27.J.GORODI (132) $\frac{1}{2}$ - $\frac{1}{2}$ M.FRANCIS (99J) 28.MRS R.M.BRUCE (148)
1-0 S.DORLEY-BROWN (116) 29.R.S.THYNNE (131) 1-0 C.STANFORD (110)
30.R.H.JONES (126) 1-0 J.TOWNSEND (-) 31.T.J.HAY (114) 1-0 D.YEATES (-)
32.R.V.CROSS (133) 1-0 DEFAULT

Devon II $12\frac{1}{2}$ - $3\frac{1}{2}$ Somerset II

MATCH CAPTAINS' REPORTS

Devon (R.V.CROSS)

Our fifth win on the trot for both first and second teams ensures we enter the National Stages of the County Championships. Glos loss today (see below) against Hampshire means we have won the Second team competition with Glos still to be played. The reasons behind this? Probably the fact that we have played roughly the same team each match and have not defaulted any boards whatsoever this year. There seems to be an ever increasing trend of this by other counties - Wiltshire 1, Cornwall 8, Hampshire 9 and Somerset 1. 1 is easy to cope with - I don't play which often helps me, but more than 1 means other players who wish to play don't.

Today's first team Match was won on the middle boards - unlike the Hampshire match. We were simply too strong for them in this department. Again, our strength in depth showed in the second team match.

Somerset (G.I.MILLER)

Strictly speaking a result that was expected. Devon were much stronger than us. Good results on the top 4 boards where we were totally outgraded but no wins here. Wins on 15 and 16 gave the score some respectability. Overpowered in the second team, especially in the bottom half dozen boards. Some good results from our juniors. However, we will probably be in the National Stages of the Minor Counties Championships, even if we lose to Hampshire.

Hampshire v Gloucestershire

Played at Devizes on 20 February 1988.

1.M.J.YEO (204) 0-1 D.O.COLLIER (194) 2.J.CORFIELD (197) $\frac{1}{2}$ - $\frac{1}{2}$ N.HOSKEN (181)
3.J.H.JONES (183) $\frac{1}{2}$ - $\frac{1}{2}$ G.P.COPELAND (195) 4.A.FALLER (182) $\frac{1}{2}$ - $\frac{1}{2}$ C.J.A.JONES (181)
5.M.L.NEWBURY (175) 1-0 J.R.BOYCE (182) 6.J.R.POULTON (163J) 0-1 P.DODWELL (194)
7.J.HOPKINS (174) $\frac{1}{2}$ - $\frac{1}{2}$ A.EASTON (184) 8.J.O.PILLAY (163J) 0-1 E.NEWMAN (171)
9.D.R.NEIL (155J) $\frac{1}{2}$ - $\frac{1}{2}$ A.STIRLING (164) 10.S.W.KNOX (169) $\frac{1}{2}$ - $\frac{1}{2}$ P.J.MEADE (175)
11.S.DEAN (165) $\frac{1}{2}$ - $\frac{1}{2}$ I.R.PICKUP (170) 12.T.I.COWLING (161) $\frac{1}{2}$ - $\frac{1}{2}$ R.O.POWIS (171)
13.J.MONK (153J) $\frac{1}{2}$ - $\frac{1}{2}$ I.R.WHITE (169) 14.P.MILLER (139) 1-0 J.J.CARR (154)
15.P.C.SYMLINGTON (148) 1-0 A.GILMOUR (-) 16.D.F.THOMPSON (151) 0-1 P.NENDICK (1)

Hampshire I $7\frac{1}{2}$ - $8\frac{1}{2}$ Gloucestershire I

17.M.B.HERION (130J) $\frac{1}{2}$ - $\frac{1}{2}$ I.FURBER (163) 18.M.CONNOR (142J) $\frac{1}{2}$ - $\frac{1}{2}$ R.J.DIXON (163)
19.A.D.SMITH (140) 1-0 J.KNIGHT (147) 20.M.R.BAKER (133) 0-1 A.KILLEY (125)
21.D.CULLIFORD (140) $\frac{1}{2}$ - $\frac{1}{2}$ R.J.SELFE (140) 22.L.C.WALTERS (142) 1-0 M.J.WOOD (13)
23.D.J.WEBB (145) 1-0 C.M.OLIVER (134) 24.M.C.HAGAN (143) 1-0 A.R.BENTLEY (149)
25.P.J.HEBBLETHWAITE (-) 0-1 C.T.BEVERIDGE (132) 26.D.BENNETT (110J) 1-0

H.J.DRAISEY (132) 27.P.L.MARSHALL (141) 1-0 H.PARKER (125J) 28.S.D.LE FEVRE (136) 0-1 M.GINGELL (122) 29.C.W.LAXTON (125) 0-1 T.N.MARKE (109) 30.H.W.PRIOR (117) 0-1 A.GETTINGS (131J) 31.Q.WINCH (111) $\frac{1}{2}$ - $\frac{1}{2}$ B.FLETCHER (114) 32.R.M.PRINCE (103) $\frac{1}{2}$ - $\frac{1}{2}$ T.NEWMAN (124)

Hampshire II $8\frac{1}{2}$ - $7\frac{1}{2}$ Gloucestershire II

MATCH CAPTAINS' REPORTS

Hampshire (P.L.MARSHALL)

Alas the end of our inspirations of getting into the National Stages of the County Championships and we are not eligible for the Minor. It has been a great disappointment to lose to both Devon and Glos by only 1 point. Yet again their strength in depth over the top boards won it for them although we did well to win on boards 14 and 15. However, we exacted our revenge by beating them by 1 point in the second team where we were stronger on the middle boards. We must win our last Second team match against Somerset to qualify in the National Stages of the Second Team Championships.

Gloucestershire (R.SMITH)

A close match, we winning the first team, Hants the second, each by 1 point. The first team win gives us 5 wins from 5 matches and means we qualify for the National Stages. However, we must now beat Devon to become Champions and beat their Second team and hope Somerset beat Hampshire if we are going to qualify in the Second Team National Stages.

A tight win in the first team match decided by our strength on the top 8 boards (5 - 3). A match of many draws - 9 in all.

The second team result was decided by Hampshire's experience on their middle boards, Messrs Walters, Webb, Hagan and Marshall all winning.

We will have to ensure we have an extra strong side out against Devon.

Wiltshire v Cornwall

Played at Buddal Lane Hall, Exeter on 20 February 1988.

1.R.HAYDON (198) $\frac{1}{2}$ - $\frac{1}{2}$ S.J.PIPER (173) 2.T.HEADLONG (193) 1-0 R.J.GRIME (161) 3.Miss J.GARWELL (172) 1-0 J.NICHOLAS (151) 4.M.STRANGE (156) 1-0 A.D.MEAKES (139) 5.D.E.WARD (157) 1-0 B.PARKIN (137) 6.T.WOODWARD (148) 0-1 D.BURLEIGH (139) 7.A.W.CHAMPION (146) 1-0 B.H.GARRETT (116) 8.R.W.RENDELL (154) $\frac{1}{2}$ - $\frac{1}{2}$ M.JOLLY (120) 9.P.GILL (140) $\frac{1}{2}$ - $\frac{1}{2}$ O.WACKER (124J) 10.R.CARVER (128) 1-0 J.HAMPTON (-) 11.Mrs E.HARTFORD (128) $\frac{1}{2}$ - $\frac{1}{2}$ L.JUPP (96J) 12.A.D.PONTING (138J) 1-0 G.SMITH (-) 13.R.MILLENER (-) $\frac{1}{2}$ - $\frac{1}{2}$ S.MARGETTS (118J) 14.D.HEYWOOD (131) 0-1 K.WILKINSON (92) 15.A.HURST (121) 1-0 C.BRAY (84J) 16.M.BYTHEWAY (-) $\frac{1}{2}$ - $\frac{1}{2}$ J.WOOLF(-)

Wiltshire I 11 - 5 Cornwall I

17.J.E.MILWARD (131) 1-0 I.K.PILLING (106) 18.T.M.FLANAGAN (114) 0-1 D.COLBORNE (-J) 19.D.H.POTT (122) 1-0 MISS T.GARRETT (85J) 20.M.WALTERS (107) 1-0 R.WILKINSON (93J) 21.N.G.ASHBY (115J) $\frac{1}{2}$ - $\frac{1}{2}$ M.J.EVANS (78) 22.J.SYMONS (85J) 1-0 B.J.EVANS (82J)

BOARDS 23-27 Cornwall Defaulted, Wiltshire's players: A.DUNCAN (90J), B.MITCHELL (-J), J.MILWARD (-J), G.S.ASHBY (95) and G.LOADER (108).

BOARDS 28-32 Defaulted by both counties.

Wiltshire II $9\frac{1}{2}$ - $1\frac{1}{2}$ Cornwall II

MATCH CAPTAINS' REPORTS

Wiltshire (R.W.RENDELL)

Well at long last a double win for Wiltshire. But was it really worth it? Both sides were extremely weak, only Cornwall more so than Wiltshire. I must say it is extremely depressing when you cannot raise a side let alone a decent one. I think Tony would join me in saying that this match was a mockery. I am getting sick and tired of the excuses players make. We all know the real reason: Exeter is a long way to travel. Why do people make up so lame excuses? Why is it that kids are prepared to travel at short notice but adults aren't at all? I advised my players in writing in September of all the dates of matches and most people replied "Yes, I am available". You then phone them up 2-3 weeks before the fixture to check they know only to be told they are unavailable and that you should have phoned them earlier. I

don't expect others to run my life, I know in advance what I am going to do. Surely, others do the same? However, this doesn't seem to be the case for many Wiltshire players. Do other counties have the same problem? - I think Cornwall probably do.

Well, we have managed to pull ourselves off the bottom in both First and Second Team leagues. Perhaps its time someone else took over running our County team.

Cornwall (A.D.MEAKES)

Yet again we are unable to field a full team. Wiltshire likewise but they were much stronger. I knew in my heart from the start we weren't going to get much from the match - unlike last year when we drew the first team and won the second. And so it proved. A heavy defeat at the hands of a county who are about the same strength as ourselves. I understand that Richard had spent several days trying to get hold of me before the match to tell me that he was going to have to default boards and when he finally managed it late on Friday evening, I had to admit that we were defaulting more boards than he was!

Cornwall v Hampshire

Played at Buddal Lane Hall, Exeter on 27 February 1988.

1.H.COLEMAN (181) $\frac{1}{2}$ - $\frac{1}{2}$ M.J.YEO (204) 2.R.J.GRIME (161) 1-0 J.H.JONES (183)
3.J.NICHOLAS (151) $\frac{1}{2}$ - $\frac{1}{2}$ M.L.NEWBURY (175) 4.B.MOSS (-) 0-1 J.HOPKINS (174)
5.A.D.MEAKES (139) 1-0 S.DEAN (165) 6.D.BURLEIGH (139) 0-1 Ed.HOLLAND (158J)
7.N.WADE (135) 0-1 D.R.NEIL (155J) 8.S.ADDICOTT (121J) 1-0 T.I.COWLING (161)
9.J.HAMPTON (-) 1-0 P.MILLER (165) 10.D.HOCKING (117) 0-1 M.B.HERION (153J)
11.S.MARGETTS (118J) 0-1 D.F.THOMPSON (151) 12.A.PILLING (-) 0-1 S.J.KENT (140)
13.C.BRAY (84J) 0-1 M.G.HAGAN (143) 14.J.WOLF (-J) $\frac{1}{2}$ - $\frac{1}{2}$ L.C.WALTERS (142)
15.I.M.PILLING (106) 0-1 P.C.SYMLINGTON (148) 16.D.COLBOURNE (-J) 0-1
P.L.MARSHALL (141)

Cornwall I 5 $\frac{1}{2}$ - 10 $\frac{1}{2}$ Hampshire I

17.J.OTTER (80) 0-1 A.D.SMITH (140) 18.N.PATTERSON (93) 0-1 M.A.BAKER (138)
19.A.J.CHAPPEL (-) 0-1 P.J.HEBBLETHWAITE (-) 20.N.WORLEY (-J) 1-0 DEFAULT
21.J.THOMPSON (-J) 0-1 K.CORNELIUS (125J) 22.R.HOSKEN (85) 1-0 S.REDMILL
(127J) 23.R.CLARK (-J) 1-0 Q.WINCH (111) 24.C.FEARN (-J) $\frac{1}{2}$ - $\frac{1}{2}$ R.M.PRINCE (103)
Boards 25-32 defaulted by Cornwall in advance.

Cornwall II 3 $\frac{1}{2}$ - 12 $\frac{1}{2}$ Hampshire II

MATCH CAPTAINS' REPORTS

Cornwall (A.D.MEAKES)

This match was originally scheduled for October but was postponed because of storms. When re-arranging the date it was not noticed that the Exeter Congress was on the same date (it has always been in March in the past). Both teams were affected by the clash of events and in my case, I was unable to raise a full team again.

However, those of us that were able to play did manage to put up something of a fight. There was never any realistic possibility of winning the match, but the result was far better than we had any right to expect - we scored 5 out of 9 at the top and 2 $\frac{1}{2}$ out of 3 at the bottom-pity about the collapse in between. Particularly noteworthy was Rex Hosken's win on Board 22 over a junior graded 42J above him.

Hampshire (P.L.MARSHALL)

A fairly convincing win in both matches for Hampshire as expected. Both sides, especially Cornwall, effected by the Exeter Congress on the same day. A great pity, but we didn't of course realise this when rearranging the fixture. Good wins again by our juniors.

Hampshire v Somerset

Played at Wincanton on 12 March 1988

1.M.J.YEO (204) 1-0 J.K.WHITCUTT (170) 2.J.CORFIELD $\frac{1}{2}$ - $\frac{1}{2}$ C.J.WEEKS (170)
3.J.H.JONES (183) $\frac{1}{2}$ - $\frac{1}{2}$ D.LITTLEJOHNS (172) 4.J.E.ARNEY (181J) 0-1 A.L.HILL (169)
5.M.L.NEWBURY (175) 1-0 R.W.GREGORY (165) 6.S.W.KNOX (169) 1-0 G.N.JEPPS (150)
7.J.O.PILLAY (163J) 0-1 R.HARDY (157) 8.S.DEAN (165) $\frac{1}{2}$ - $\frac{1}{2}$ D.HOLMES (-)
9.P.MILLER (165) 1-0 D.A.JONES (159) 10.I.A.STENHOUSE (161) 1-0 S.R.BONIFACE (157)
11.T.I.COWLING (161) $\frac{1}{2}$ - $\frac{1}{2}$ J.E.FEWKES (155) 12.J.JAMES (151J) 0-1 C.E.WINCH (154)
13.D.F.THOMPSON (151) $\frac{1}{2}$ - $\frac{1}{2}$ R.J.TABOR (154) 14.M.C.HAGAN (143) 1-0 D.C.WOOD (160)
15.S.J.KENT (140) 1-0 A.HIBBITT (145) 16.L.C.WALTERS (142) 0-1 B.K.TOWERS (142)

Hampshire I $9\frac{1}{2}$ - $6\frac{1}{2}$ Somerset I

17.D.J.WEBB (145) 1-0 H.G.THOMAS (152) 18.P.L.MARSHALL (141) 0-1 D.G.WOODRUFF
(153) 19.A.D.SMITH (140) 1-0 M.EASTWOOD (131J) 20.D.CULLIFORD (140) 0-1 E.W.COLLETT
(145) 21.M.R.BAKER (138) 1-0 T.A.WALLIS (142) 22.B.P.SWEENEY (137) $\frac{1}{2}$ - $\frac{1}{2}$ H.FARMER
(141) 23.P.J.HEBBLETHWAITE (-) 1-0 C.T.McKINLEY (140) 24.K.CORNELIUS (125J)
0-1 Miss J.EASTWOOD (112J) 25.C.W.LAXTON (125) 0-1 P.CHAPMAN (138)
26.H.W.PRIOR (117) 1-0 R.MAISHMAN (132) 27.D.BENNETT (110) $\frac{1}{2}$ - $\frac{1}{2}$ R.J.HIRONS (124)
28.Q.WINCH (111) 0-1 P.WOOD (97J) 29.R.M.PRINCE (103) $\frac{1}{2}$ - $\frac{1}{2}$ P.UNDERWOOD (132)
30.D.J.SAVAGE $\frac{1}{2}$ - $\frac{1}{2}$ M.J.CARTER (103) 31.F.J.GOY (83) $\frac{1}{2}$ - $\frac{1}{2}$ D.S.HUTCHFIELD (105)
32. DEFAULTED BY HAMPSHIRE IN ADVANCE 0-1

Hampshire II $7\frac{1}{2}$ - $8\frac{1}{2}$ Somerset II

MATCH CAPTAINS' REPORTS

Hampshire (P.L.MARSHALL)

Two tight matches. Hampshire managing to win by three points in the first team but losing the second thus failing to qualify in the Second Team National Stages. The difference - the defaulted board! Again we struggled to raise a side and this time we paid dearly for it. Good results all the way down in the first team secured the points, however, all three juniors lost this time. Again the same in the second team.

Somerset (G.I.MILLER)

A first team defeat but we still qualify for the Minor Counties Championships. A tight result in the second team which finished in our favour putting us second equal with Glos on 7 points but third effectively. We shall rue losing to Wiltshire II's. Some good results from our junior players stands us in good stead for next year. We shall look forward to playing in the Minor Counties finals.

Dorset v Cornwall

Played at Buddle Lane Hall, Exeter on 12 March 1988.

1.S.J.SHUTLER (199) $\frac{1}{2}$ - $\frac{1}{2}$ H.COLEMAN (181) 2.A.J.DOMMETT (192) $\frac{1}{2}$ - $\frac{1}{2}$ S.J.PIPER (173)
3.M.J.SIMONS (189) $\frac{1}{2}$ - $\frac{1}{2}$ R.J.GRIME (161) 4.S.C.E.ROBINSON (185) 1-0 C.STACE (-)
5.M.B.ISAACS (184) 1-0 M.KIRKMAN (-) 6.R.M.PEGG (183) 1-0 A.D.MEAKES (139)
7.C.W.JOHNS (176) 1-0 D.BURLEIGH (139) 8.M.J.ROTH (167) 0-1 B.PARKIN (137)
9.R.VALENTINE (170) 0-1 J.WATSON (-) 10.M.P.WADDINGTON (161) 1-0 N.WADE (135)
11.T.E.SIMMS (159) $\frac{1}{2}$ - $\frac{1}{2}$ M.JOLLY (120) 12.R.BURTON (180) 1-0 S.ADDICOTT (121J)
13.J.C.ROWLEY (158) 1-0 O.WACKER (126J) 14.H.D.NEEDHAM (156) 1-0 D.HOCKING (117)
15.F.C.KINGDON (153) 1-0 S.MARGETTS (118J) 16.M.W.ADAMS (149) 1-0 L.JUPP (96J)

Dorset I 12 - 4 Cornwall I

17.P.C.COLMER (139) 0-1 G.SMITH (-) 18.A.C.BULLOCK (113) $\frac{1}{2}$ - $\frac{1}{2}$ J.WOOLF (-J)
19.P.BRACKNER (133) 0-1 C.J.BRAY (84J) 20.P.C.DEARLOVE (138) 1-0 L.K.PILLING (100)
21.A.MILLERS (132) 1-0 K.WILKINSON (93) 22.S.A.CRANE (-) 1-0 D.COLBOURNE (-J)
23.M.J.SALES (-) 0-1 P.MILLER (90) 24.J.A.BASSETT (144) $\frac{1}{2}$ - $\frac{1}{2}$ A.J.CHAPPEL (-)
25.B.M.SHEINBAUM (140) 1-0 MISS T.GARRETT (85J) 26.D.J.CANNINGS (127) 1-0
M.GARRETT (82J) 27.P.FOSTER (135) 1-0 R.HOSKEN (85) 28.D.G.E.RAPKINS (126)
1-0 R.WILKINSON (92) 29.A.D.PRIMETT (125) $\frac{1}{2}$ - $\frac{1}{2}$ M.J.EVANS (78) 30.W.J.KELLY (116)
1-0 J.THOMPSON (-J) 31.A.G.STOUT (78J) 1-0 B.J.EVANS (82J) 32.R.A.G.MARPLES (94)
1-0 DEFAULT.

Dorset II $11\frac{1}{2}$ - $4\frac{1}{2}$ Cornwall II

MATCH CAPTAIN'S REPORTS

Dorset (R.A.G.MARPLES)

Dorset almost completely out-graded Cornwall and so the results were not unexpected. It was unfortunate for Cornwall that their two best players, Michael Adams and Matthew Piper, both of Truro School were absent, studying for their "O" Levels. Those who played did well on boards 1,2,3,8 & 9 in the first team and 19 & 23 in the second.

I understand from Tony Meakes that one of his team, probably B.H.Garrett, was taken ill on the way, so they defaulted board 32 which I took up. One of my players, Mr P Edgington, did not turn up due to a misunderstanding and was replaced by A.C.Bullock on Board 18 who drew against junior J.Woolf. As we have become Minor Counties Champions this season, we shall be playing Bedfordshire, Champions of the E.A.C.U., probably on Sunday 15 May at the Basingstoke Chess Club, and hopefully win through to the Semi-Finals on 4 June.

Cornwall (A.D.MEAKES)

Yet again ours wasn't much of a team, but for a change, I managed to find 32 bodies willing to play. I even found a replacement for one of the two people who withdrew through illness on Saturday morning, yet we still had to default a board. Several leading players were absent because of pressure of work, "O" Level studies and other commitments. Though most of the middle and lower ranking players were available, they were playing too high in the board order to make much impact on the match.

Considering the differences in playing strength of the two teams, I suppose it was a respectable score. A good result for the team we had, a poor result for the team we could have had.

Devon v Gloucestershire

Played at the Shrubbery Hotel, Ilminster on 12 March 1988.

1.C.HEATH (195) 0-1 A.ASHBY (203) 2.J.WHEELER (192) 0-1 A.T.MORDUE (186)
3.G.WHEELER (186) 0-1 D.O.COLLIER (194) 4.J.HUTCHINGS (189J) 0-1 G.P.COPELAND (195)
5.B.HEWSON (189) $\frac{1}{2}$ - $\frac{1}{2}$ C.J.A.JONES (181) 6.R.LINGHAM (171) $\frac{1}{2}$ - $\frac{1}{2}$ A.EASTON (181)
7.A.SPICE (168) 1-0 J.R.BOYCE (182) 8.P.HARRIS (-) $\frac{1}{2}$ - $\frac{1}{2}$ S.P.DILLEIGH (181)
9.A.BOYNE (184J) 1-0 J.HUMPHREYS (178) 10.A.BRUSEY (166) 0-1 E.T.NEWMAN (171)
11.J.A.GILBERT (-) 1-0 A.STIRLING (164) 12.T.THYNNE (162) $\frac{1}{2}$ - $\frac{1}{2}$ D.C.JARRETT (178)
13.R.PHILLIPS (158) 0-1 P.J.MEADE (175) 14.E.JONES (-) $\frac{1}{2}$ - $\frac{1}{2}$ R.O.POWIS (171)
15.S.A.WILKS (159) 0-1 I.R.WHITE (169) 16.A.D.STARKIE (151) $\frac{1}{2}$ - $\frac{1}{2}$ I.R.PICKUP (170)

Devon I 6 - 10 Gloucestershire I

17.J.HAYWARD (147) 1-0 I.FURBER (163) 18.J.RIDOLFO (115) 0-1 R.W.SMITH (156)
19.R.C.LUFFMAN (152) $\frac{1}{2}$ - $\frac{1}{2}$ J.J.CARR (154) 20.B.BOOMSMA (145) 0-1 A.R.BENTLEY (149)
21.R.M.BRUCE (149) $\frac{1}{2}$ - $\frac{1}{2}$?.CARNOCK (-) 22.K.J.BLOODWORTH (149) 1-0 J.KNIGHT (147)
23.R.V.CROSS (133) $\frac{1}{2}$ - $\frac{1}{2}$ C.R.POWNEY (139) 24.J.PARKER (145) $\frac{1}{2}$ - $\frac{1}{2}$ R.J.SELFE (140)
25.M.TAVENER (140J) $\frac{1}{2}$ - $\frac{1}{2}$ M.J.WOOD (135) 26.B.PENALIGON (136) 1-0 C.M.OLIVER (134)
27.D.HUTCHISON (142) $\frac{1}{2}$ - $\frac{1}{2}$ C.T.W.BEVERIDGE (132) 28.M.HORNE (136) 0-1 M.GINGELL (122)
29.R.HUTCHINGS (138J) 1-0 A.RICHARDS (124) 30.R.SHAPLAND (136J) 0-1 T.N.MARKE (109)
31.J.GORODI (132) 0-1 ?.WILDE (-) 32.Mrs R.M.BRUCE $\frac{1}{2}$ - $\frac{1}{2}$ T.NEWMAN (124)

Devon II $7\frac{1}{2}$ - $8\frac{1}{2}$ Gloucestershire II

MATCH CAPTAINS' REPORTS

Devon (R.V.CROSS)

Having won 5 from 5 before this match we felt confident of beating Glos to remain unbeaten. However, as soon as we saw the Glos team we realised that it wasn't going to be easy. We probably had our strongest side out this year but still missed several stronger players but Glos' team was incredible. There aren't many counties that can boast a 170 player on board 16! The first team result was really decided over the top 4 boards where they won 4-0. However, from there onwards it was very close with the second team finishing $8\frac{1}{2}$ - $7\frac{1}{2}$ to Glos.

However, we have still qualified for the County Championships.

Gloucestershire (R.W.SMITH)

We managed to get our strongest side out for some time for this match. And didn't we need it! 10-6 in our favour seems fairly comfortable but take away the top 4 boards in which we won all of them and it is very close. Fortunately, the Second team match ended in our favour and we therefore avenged our double defeat to Devon last year. By winning the second team match and Somerset beating Hampshire we have also qualified (by the back door) for the Second Team championships.

Final Tables

<u>Firsts</u>	<u>W</u>	<u>L</u>	<u>Pts</u>
Gloucester	6	0	12
Devon	5	1	10
Hampshire	4	2	8
Dorset	3	3	6
Somerset	2	4	4
Wiltshire	1	5	2
Cornwall	0	6	0

<u>Qualifiers</u>
County Champions
County Runner Up
Minor Champions
Minor Runner Up

<u>Seconds</u>	<u>W</u>	<u>D</u>	<u>L</u>	<u>Pts</u>
Devon	5	0	1	10
Gloucester	3	1	2	7
Somerset	3	1	2	7
Hampshire	3	0	3	6
Dorset	3	0	3	6
Wiltshire	2	0	4	4
Cornwall	1	0	5	2

Seconds Champions
Seconds Runner Up

NATIONAL CHESS DAY



in association with
SPORT AID

2nd July 1988 - 2nd July 1988 - 2nd July 1988

THE BRITISH CHESS FEDERATION IN ASSOCIATION WITH SPORT AID '88 IS ORGANISING A NATIONAL CHESS DAY ON 2ND JULY 1988 WITH EVENTS AT A VARIETY OF LOCATIONS THROUGHOUT THE COUNTRY.

THE MAIN OBJECTIVE IS TO RAISE MONEY THROUGH SPONSORED SIMULTANEOUS DISPLAYS FOR FAMINE RELIEF IN AFRICA.

CAN YOU HELP? EITHER AS A PLAYER - GIVING A FREE FUND-RAISING SIMULTANEOUS DISPLAY AGAINST CHILDREN SPONSORED BY THEIR FRIENDS AND RELATIVES - OR AS AN ORGANISER.

IF SO PLEASE WRITE TO: NATIONAL CHESS DAY, THE BRITISH CHESS FEDERATION, 9A GRAND PARADE, ST LEONARDS-ON-SEA, EAST SUSSEX TN38 ODD.

This quarter I feature two short games. The first of which was played in 1906 and teaches one of the perils if you do not stick to the principles you were taught when you originally learnt the game. These are (1) do not move the same pieces too often and (2) ensure your King doesn't get caught in the centre:

T.H.BILLINGTON v R.L.SPEARS

Ruy Lopez

1.e2-e4 e7-e5; 2.Ng1-f3 Nb8-c6; 3.Bf1-b5 Ng8-f6; 4. O-O Nf6xe4; 5.d2-d4 Ne4-d6; 6.Bb5xc6 b7xc6; 7.d4xe5 Nd6-b7; 8.Nf3-d4 Bf8-e7; 9.Nd4-f5:..

This strong move gives White almost a winning advantage. If 9...O-O; then 10.Qd1-g4 g7-g6; 11.Bc1-h6 Rf8-e8; 12.Nf5-g7... Black is therefore forced to move the Bishop back home.

9...Be7-f8; 10.Rf1-e1 g7-g6;

This move unfortunately allows a mate. Correct was another move with the knight Nb7-c5 followed by Nc5-e6. It's funny but having moved the knight four times already (three times too much) it should be necessary to move it two more times to stop the attack.

11.Nf5-d6+...

This pretty move wins the Queen or forces mate.

11...Bf8xd6;

If 11...Nb7xd6; 12.e5xd6+ Bf8-e7; 13.d6xe7... or 11...Ke8-e7; 12.Bc1-g5+ ... the Black Queen is lost.

12.e5xd6+ Ke8-f8; 13.Bc1-h6+ Kf8-g8; 14.Qd1-d4...

An unlooked for finish. Of course, 14.d6xc7... also wins.

14...f7-f6; 15.Qd4-c4 mate.

The second game shows the other side of the coin of the Vienna Game which was featured in "Gems of the Chess Board" in the September 1987 Edition. It shows what a risky game it is if you aren't totally sure what you are doing.

A.BOROS v B.LILIENTHAL

Vienna Game

1.e2-e4 e7-e5; 2.Nb1-c3 Ng8-f6; 3.f2-f4 d7-d5;

The correct and most aggressive response to 3.f2-f4.

4.f4xe5 Nf6xe4; 5.Qd1-f3 Nb8-c6;

5...f7-f5; is invariably played here but this move is quite sound.

6.Nc3xe4 Nc6-d4; 7.Qf3-f4 d5xe4; 8.Bf1-c4 Bc8-f5;

Cutting out the mating threat and bring together the basis of a Black counter-attack. Note 9.g2-g4?... loses quickly to 9...Qd8-h4+; etc White also has to watch out for Nd4-c2+ forking the King and Rook. He therefore decides to force Black's hand and give up the Rook for the Bishop on f5. However, he is in for a shock...

9.c2-c3 g7-g5;

White finds he is going backwards and therefore attempts a sacrifice with the expectation of recovering the piece immediately.

10.Bc4xf7+ Ke8xf7; 11.Qf4-f2...

The intention is to collect either the knight or the bishop. However, again he is surprised by a pawn move.

11...e4-e3;

Now if 12.d2xe3 Nd4-c2+; 13.Ke1-e2 Qd8-d3+; or 12.Qf2xe3 Nd4-c2+; wins.

12.Qf2-f1...

Now after 12 moves White has no development at all and is ready to be swamped.

12...e3xd2+; 13. Ke1-d1...

If 13.Kelxd2 Nd2-c2+ wins easily, and if 13.Bclxd2 Nd4-c2+; 14.Kel-d1 Nc2-e3+; wins the Queen.

13...d2xc1=Q+; 14.Kdlxc1 g5-g4; 15.b2-b4...

The knight on d4 cannot be taken on account of Bf8-h6+.

15...Qd8-g5+; 16.Kcl-d1 Ra8-d8; 17.Resigns. There is no answer.

SOLUTIONS TO PROBLEMS

For the problems - see page 13.

(a) An easy one to start with - provided you see the first move. The rest then fall into place.

1.h4-h5... (threatens 2.h5-h6 g7xh6; 3.g5xh6 winning) ...g6xh5; 2.g5-g6 f7xg6; (If Black plays 2...f7-f6; 3.e5-e6!... leads to the same conclusion as actually follows) 3.e5-e6 d7xe6; 4.c4-c5!...(threatens 5.c5-c6 winning) ...d6xc5; 5.a5-a6 b7xa6; 6.b5-b6 a7xb6; STALEMATE!

(b) Most players will have looked at 1...Re8-e6 or even 1...Bc6-e5 though that gets complicated after White's 2.Rf1-e1.... But Reshevsky, playing against Adams in the 1930s, needed none of these cautious devices. He saw:

1...Qb3xc4; 2.Bblxg6 Qc4xf1+; 3.Kglxf1 Bc6-b5+; 4.Bg6-d3 Bb5xd3+; 5.Kf1-g1 Re8-e1++;
Did you?

(c) From a game between Spielmann and Landau (Amsterdam, 1938). Black cannot take the pawn because:

1...Nb6xc4; 2.Rclxc4! Qc7xc4; 3.Ne4-d6+... winning the Queen. This is one reason for the removal of the King from e8. Another is White's threat of d4-d5... which cannot be taken because of the double check.

Castling, however, is an error, surprising in so strong a player as Black was. The response was:

1...0-0; 2.Ne4-f6+ g7xf6; (...Kg8-h8; 3.Qe2-h5++)
3.Qe2-g4+ Kg8-h8(or h7); 4.Kgl-g2!... and whatever Black does he cannot stop Rcl-h1 mate.

(d) This is probably the hardest to see of the 5. The first move is fairly easy to see but the rest harder.

1...Nc7-a8!; if 2.Kb7xa8?? Kd8-c7!; draws as White's Bishop tied to the defence of c2 cannot prevent the Black King from oscillating on c7 and c8. However, White has plenty of alternative play. Here is one variation:
2.Kb7-c6 Kd8-e7; 3.Kc6-d5 Na8-b6+; 4.Kd5-d4 Ke7-d6; 5.Ba4-b3 Kd6-c7;
6.Kd4xc3 Kc7-b7; 7.Bb3-g8 Kb7xa7; 8.Kc3-d4 Nb6-d7; 9.Bg8xh7 Nd7-f8;
10.Bh7-g8 Ka7-b6; 11.Kd4-e5 Kb6-c6; 12.Ke5-f6 Kc6-d6; Now if 13.Kf6-f7 or g7 Kd6-e5!; draws. If 13.Bg8 moves Nf8-h7+ draws.

This is only one variation. The ultimate problem for Black is the sacrificing of his knight for White's remaining pawn. This is hard-but certainly resignation was premature.

ANSWER TO LAST QUARTER'S COMPETITION

Surprising the answer to this problem is not difficult yet no solutions were received. Therefore no winner. The answer is:

1.Rf4-f5!...(if 1...g6xf5?; then there is a forced mate...2.Rf6-h6+ Kh7xh6; 3.Qb2-h8+ Kh6-g6; 4.e4xf5+ Kg6xf5; 5.Qh8xh5+ Kf5-f6; 6.Qh5-g5++) However, what if Black doesn't take the offered rook? Well what other moves has he?
1...Qc7-d8; 2.Bc4xf7...and the rook cannot be taken as it leads to mate.
(2...g6xf5; 3.Rf6-h6+ Kh7xh6; 4.Qb2-f6+ mating.) Neither rook can move because of Rf6xf7+ et seq. The move that seems to meet the threat is the strange one

1...Kh7-h6; Then 2.Rf5xh5 is unplayable because after 2...Kh6xh5; 3.Rf6-f5+ g6xf5; the King has an escape atg4. Does the attack fail? Not at all: 2.Qb2-d2+ Kh6-g7; ("...Kh6-h7; allows 3.Rf5xh5+ etc) 3.Qd2-g5...threatening Bc4xf7... and Black is helpless.

In view of no solution being received to this competition, I will offer another one. £5 to the first person who advises me in writing what two famous games were the two games featured in "The Dawning of the Rising Star" in the last edition. (A hint they are recent games which decided a Championship!)

NEWS FROM CORNWALL

At a recent small party, the President of the Cornwall C.C.A, Mr E A Horn, presented Michael Adams with an engraved plaque to commemorate his becoming the world's youngest International Master. Since then, just to prove his salt, Michael has played in a Simultaneous Display by the World Champion, Gary Kasparov. This was played by telex with Kasparov playing from Cannes, France against ten of the world's top Under 21 players from ten different countries. The rate of play was 60 moves in 2½ hours. Amongst the other players was Diane Saveraiide and one of Russia's top young stars. Michael played in a BBC Television Studio in London. Michael was the only player to win and in fact Kasparov won 8 of the other 9, drawing against the young Russian. In Michael's very own words, Kasparov made it easy for him! Kasparov was outmaneuvred in the opening and lost a pawn. Michael then sat on the position for some time before grinding out his win. The game lasted 38 moves before Kasparov resigned. Unfortunately, I haven't the game to hand but I must admit that it does sound as if Michael is being slightly on the modest side!

An invitation to compete in the Hastings International Congress meant that Michael was unable to defend his Cornish Championship, but almost all the County's leading players did enter for the Emigrant Cup tournament which has been held since 1903. Hugh Coleman established a one point lead with four wins, but draws in each of the last two rounds enabled Matthew Piper (British U16 Champion) to draw level and so these two players have to play off for the trophy. Jeremy Menadue came third with Ian George and Roger Grime sharing fourth prize. There was also a tie for the Falmouth Cup which is played for by the lower grade players. M Hooper and D Hocking finished with 5 points and shared the prize money, but Hooper gained the cup on tie break. R K F Ough and junior J Woolf were only a half point in arrears. A feature of the Congress was the large number of young players which augurs well for the future of Cornish chess.

This year's performance in the County Championship has been extremely disappointing. This has really been due to us being unable to raise anywhere near a full team. Tony Meakes has done a great job with what he has but when you are working on the border of what is possible anyway, it makes it very difficult and rather depressing. The main reasons for the lack of players are: School work (six players are in their 'O' level year); other chess events; the remoteness of Cornwall (about two-thirds of our registered players live more than 100 miles from Exeter); shortage of car drivers, especially in the Western end of the county.

The second team has been very useful in providing a training ground for first team reserves and for the juniors now being promoted to the first team. Because of this, we are reluctant to withdraw from the second team competition. However if there is no sign of improvement, we may have to accept the inevitable and revert to just one team next year.

WEST OF ENGLAND JUNIOR CHAMPIONSHIPS 1988

To be held at Street, Somerset on Saturday/Sunday 9 and 10 July 1988. (Venue yet to be decided).

Available to all WECU juniors under the age of 18 as at 31 August 1987.

Entry forms can be obtained from Brian Francis, 15 Chancellor Road, Walton, Street, Somerset. BA16 9RX. TEL: Street (0458) 42068